

Quantitation Report (Qedit)

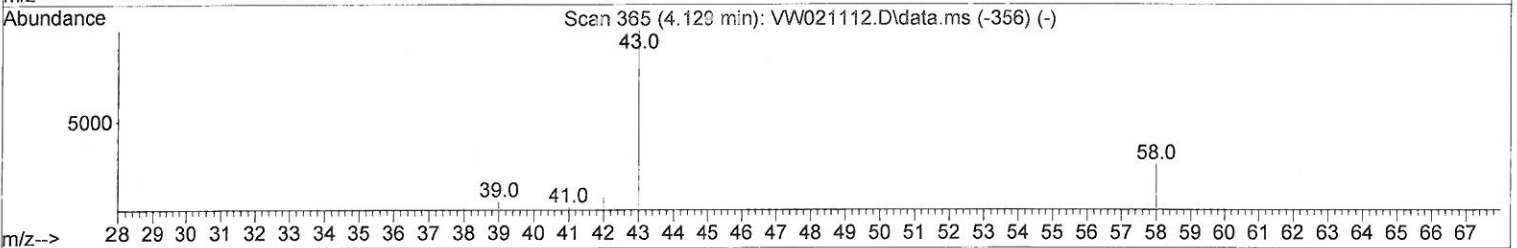
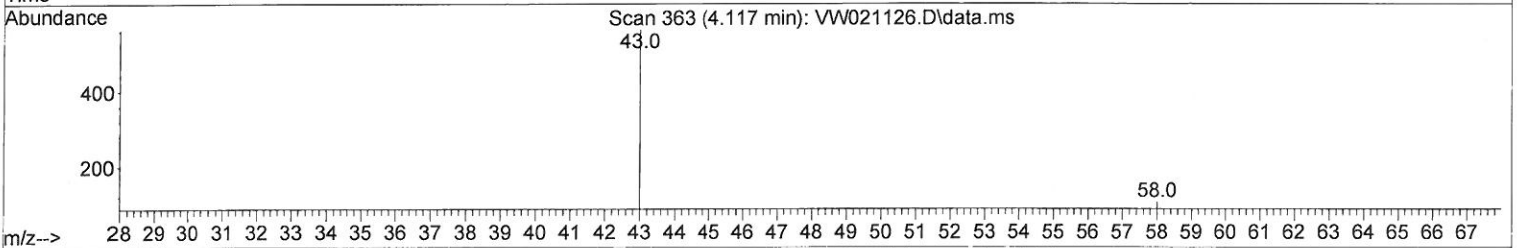
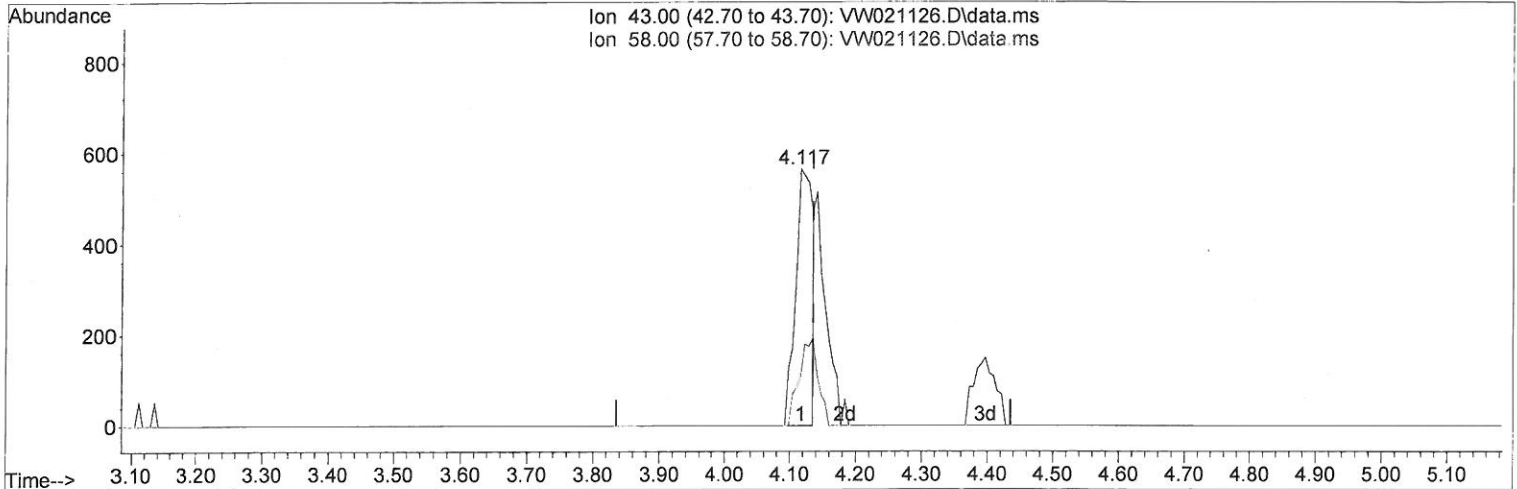
Data Path : Z:\voasrv\HPCHEM1\MSVOA_W\Data\VW120321\
 Data File : VW021126.D
 Acq On : 04 Dec 2021 18:28
 Operator : SY/VA
 Sample : M4885-12
 Misc : 5.36g/10.0mL/MSVOA_W/SOIL
 ALS Vial : 16 Sample Multiplier: 1

Instrument :
 MSVOA_W
 ClientSampleId :
 EW9L9

Manual IntegrationsAPPROVED

Quant Time: Dec 06 00:50:50 2021
 Quant Method : Z:\voasrv\HPCHEM1\MSVOA_W\Method\SFAMWLM120321SMA.M
 Quant Title : SFAM01.0
 QLast Update : Sat Dec 04 04:50:24 2021
 Response via : Initial Calibration

Reviewed By :Semsettin Yesilyurt 12/07/2021
 Supervised By :Mahesh Dadoda 12/08/2021



TIC: VW021126.D\data.ms

(13) Acetone (T)

4.117min (-0.018) 7.23 ug/L

response 1011

Ion	Exp%	Act%
43.00	100.00	100.00
58.00	26.40	37.69
0.00	0.00	0.00
0.00	0.00	0.00

Quantitation Report (Qedit)

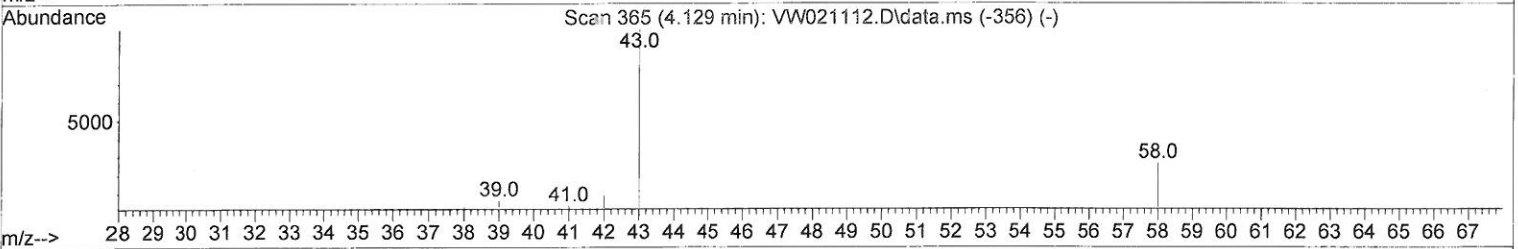
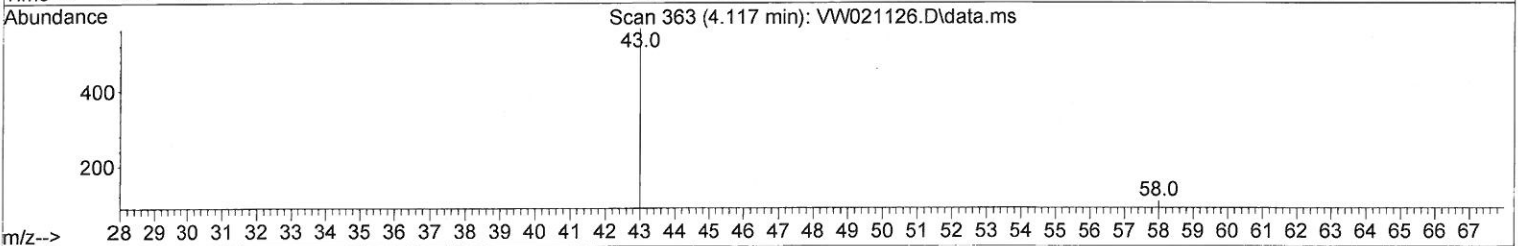
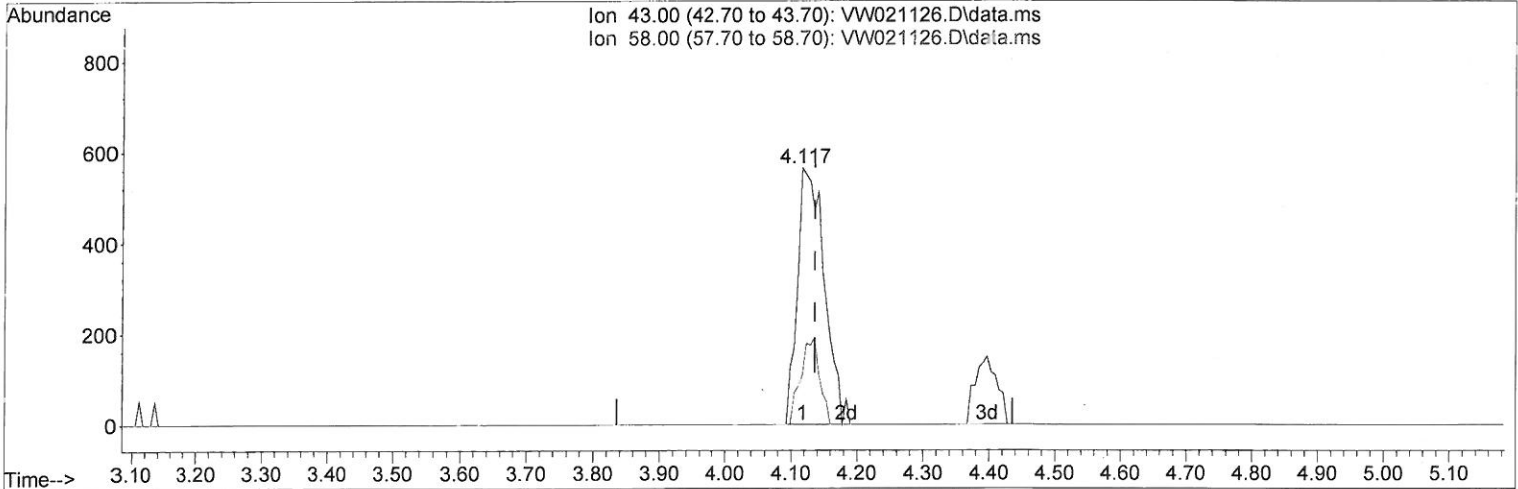
Data Path : Z:\voasrv\HPCHEM1\MSVOA_W\Data\VW120321\
 Data File : VW021126.D
 Acq On : 04 Dec 2021 18:28
 Operator : SY/VA
 Sample : M4885-12
 Misc : 5.36g/10.0mL/MSVOA_W/SOIL
 ALS Vial : 16 Sample Multiplier: 1

Instrument :
 MSVOA_W
 ClientSampleId :
 EW9L9

Manual IntegrationsAPPROVED

Quant Time: Dec 06 00:50:50 2021
 Quant Method : Z:\voasrv\HPCHEM1\MSVOA_W\Method\SFAMWLM120321SMA.M
 Quant Title : SFAM01.0
 QLast Update : Sat Dec 04 04:50:24 2021
 Response via : Initial Calibration

Reviewed By :Semsettin Yesilyurt 12/07/2021
 Supervised By :Mahesh Dadoda 12/08/2021



TIC: VW021126.D\data.ms

(13) Acetone (T)

4.117min (-0.018) 11.43 ug/L m

response 1598

Ion	Exp%	Act%
43.00	100.00	100.00
58.00	26.40	23.84
0.00	0.00	0.00
0.00	0.00	0.00

>12/14/21 sy

Data Path : Z:\voasrv\HPCHEM1\MSVOA_W\Data\VW120321\
 Data File : VW021126.D
 Acq On : 04 Dec 2021 18:28
 Operator : SY/VA
 Sample : M4885-12
 Misc : 5.36g/10.0mL/MSVOA_W/SOIL
 ALS Vial : 16 Sample Multiplier: 1

Instrument :
 MSVOA_W
 ClientSampleId :
 EW9L9

Manual IntegrationsAPPROVED

Reviewed By :Semsettin Yesilyurt 12/07/2021
 Supervised By :Mahesh Dadoda 12/08/2021

Quant Time: Dec 06 00:50:50 2021
 Quant Method : Z:\voasrv\HPCHEM1\MSVOA_W\Method\SFAMWLM120321SMA.M
 Quant Title : SFAM01.0
 QLast Update : Sat Dec 04 04:50:24 2021
 Response via : Initial Calibration

Compound	R.T.	QIon	Response	Conc	Units	Dev(Min)
Internal Standards						
1) 1,4-Difluorobenzene	8.842	114	48295	25.000	ug/L	# 0.00
28) Chlorobenzene-d5	11.634	117	45066	25.000	ug/L	0.00
58) 1,4-Dichlorobenzene-d4	13.560	152	20914	25.000	ug/L	0.00
System Monitoring Compounds						
4) Vinyl Chloride-d3	2.355	65	24028	35.709	ug/L	0.00
Spiked Amount 25.000	Range 30 - 150		Recovery = 142.840%			
7) Chloroethane-d5	2.885	69	17037	37.823	ug/L	0.00
Spiked Amount 25.000	Range 30 - 150		Recovery = 151.280%#			
11) 1,1-Dichloroethene-d2	4.019	63	27587	25.664	ug/L	0.00
Spiked Amount 25.000	Range 45 - 110		Recovery = 102.640%			
21) 2-Butanone-d5	7.080	46	11615	75.678	ug/L	0.00
Spiked Amount 50.000	Range 20 - 135		Recovery = 151.360%#			
24) Chloroform-d	7.653	84	38131	31.527	ug/L	0.00
Spiked Amount 25.000	Range 40 - 150		Recovery = 126.120%			
26) 1,2-Dichloroethane-d4	8.311	65	23713	35.838	ug/L	0.00
Spiked Amount 25.000	Range 70 - 130		Recovery = 143.360%#			
32) Benzene-d6	8.275	84	73262	31.794	ug/L	0.00
Spiked Amount 25.000	Range 20 - 135		Recovery = 127.160%			
36) 1,2-Dichloropropane-d6	9.274	67	21427	33.461	ug/L	0.00
Spiked Amount 25.000	Range 70 - 120		Recovery = 133.840%#			
41) Toluene-d8	10.323	98	68136	28.838	ug/L	0.00
Spiked Amount 25.000	Range 30 - 130		Recovery = 115.360%			
43) trans-1,3-Dichloroprop...	10.579	79	8990	30.918	ug/L	0.00
Spiked Amount 25.000	Range 30 - 135		Recovery = 123.680%			
47) 2-Hexanone-d5	10.927	63	8848	72.219	ug/L	0.00
Spiked Amount 50.000	Range 20 - 135		Recovery = 144.440%#			
56) 1,1,2,2-Tetrachloroeth...	12.688	84	19859	33.522	ug/L	0.00
Spiked Amount 25.000	Range 45 - 120		Recovery = 134.080%#			
66) 1,2-Dichlorobenzene-d4	13.853	152	21324	28.457	ug/L	0.00
Spiked Amount 25.000	Range 75 - 120		Recovery = 113.840%			
Target Compounds						
13) Acetone	4.117	43	1598m	11.430	ug/L	Qvalue 12/19/21 27
34) Trichloroethene	9.092	95	553	0.782	ug/L	86
45) 1,1,2-Trichloroethane	10.786	97	438	0.902	ug/L	89
46) Tetrachloroethene	10.866	164	18378	28.387	ug/L	98

(#) = qualifier out of range (m) = manual integration (+) = signals summed

Data Path : Z:\voasrv\HPCHEM1\MSVOA_W\Data\VW120321\
Data File : VW021126.D
Acq On : 04 Dec 2021 18:28
Operator : SY/VA
Sample : M4885-12
Misc : 5.36g/10.0mL/MSVOA_W/SOIL
ALS Vial : 16 Sample Multiplier: 1

Instrument :
MSVOA_W
ClientSampleId :
EW9L9

Manual IntegrationsAPPROVED

Quant Time: Dec 06 00:50:50 2021
Quant Method : Z:\voasrv\HPCHEM1\MSVOA_W\Method\SFAMWLM120321SMA.M
Quant Title : SFAM01.0
QLast Update : Sat Dec 04 04:50:24 2021
Response via : Initial Calibration

Reviewed By :Semsettin Yesilyurt 12/07/2021
Supervised By :Mahesh Dadoda 12/08/2021

