

Quantitation Report (QT Reviewed)

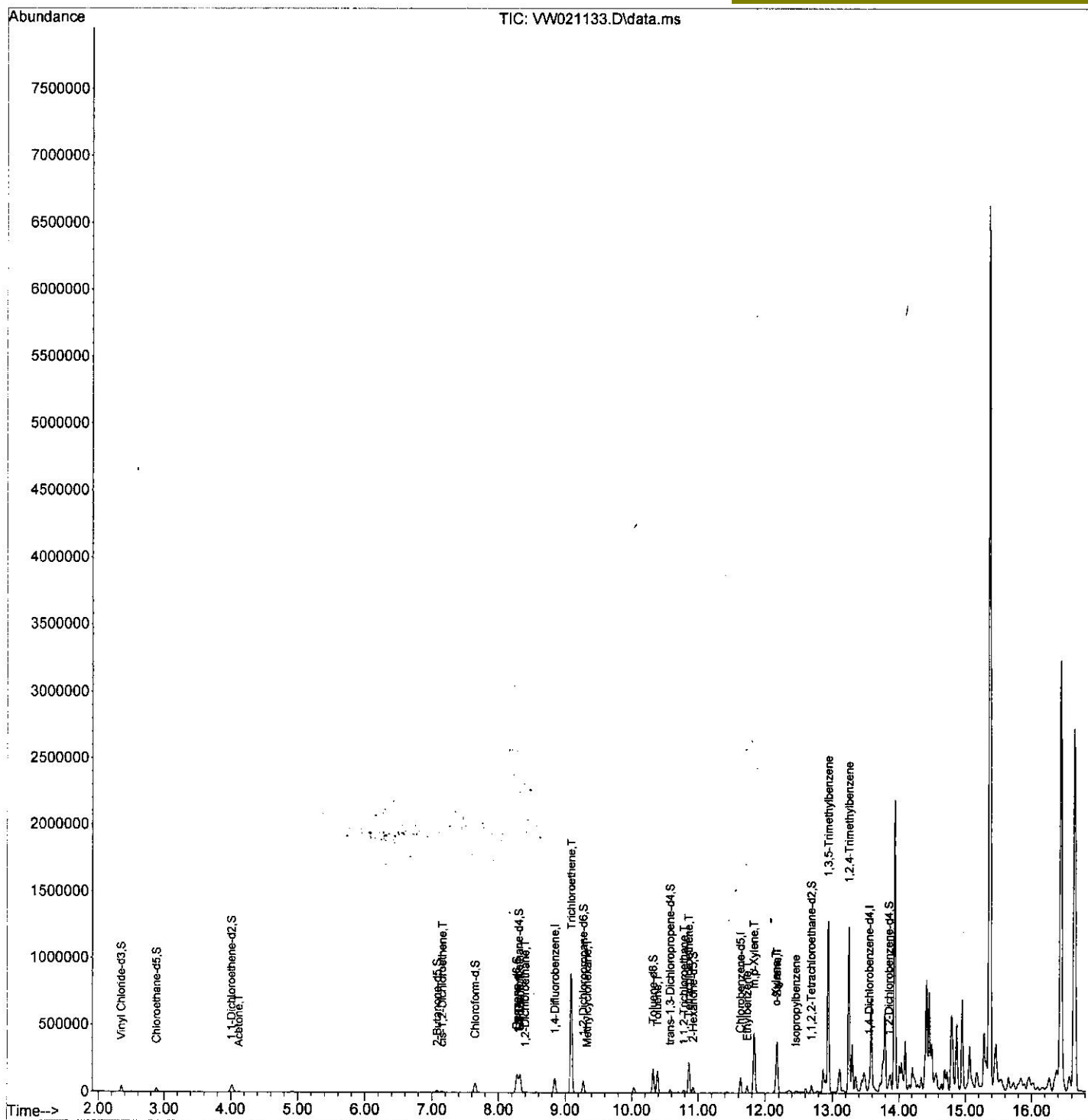
Data Path : Z:\voasrv\HPCHEM1\MSVOA_W\Data\VW120321\
Data File : VW021133.D
Acq On : 04 Dec 2021 21:16
Operator : SY/VA
Sample : M4885-22
Misc : 4.86g/10.0mL/MSVOA_W/SOIL
ALS Vial : 23 Sample Multiplier: 1

Instrument :
MSVOA_W
Client Sampled :
EW9M7

Quant Time: Dec 06 00:51:43 2021
Quant Method : Z:\voasrv\HPCHEM1\MSVOA_W\Method\SFAMWLM120321SMA.M
Quant Title : SFAM01.0
QLast Update : Sat Dec 04 04:50:24 2021
Response via : Initial Calibration

Manual IntegrationsAPPROVED

Reviewed By :Semsettin Yesilyurt 12/07/2021
Supervised By :Mahesh Dadoda 12/08/2021



Quantitation Report (Qedit)

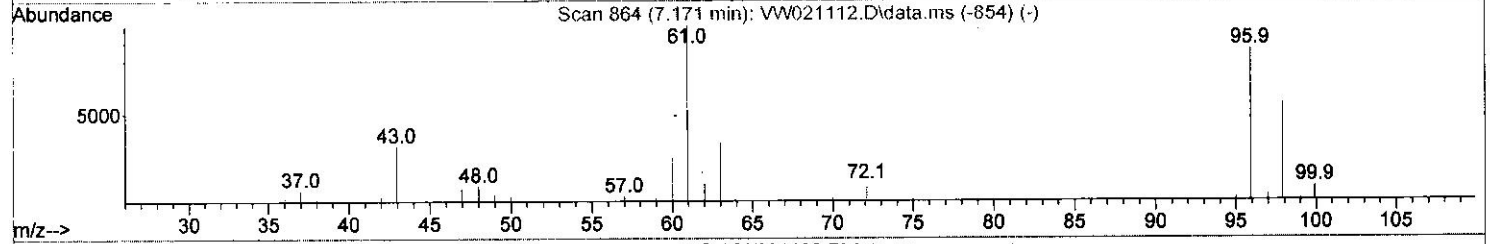
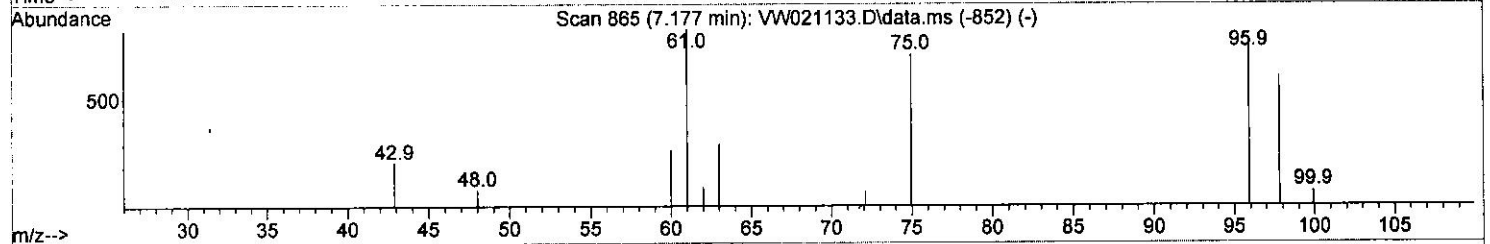
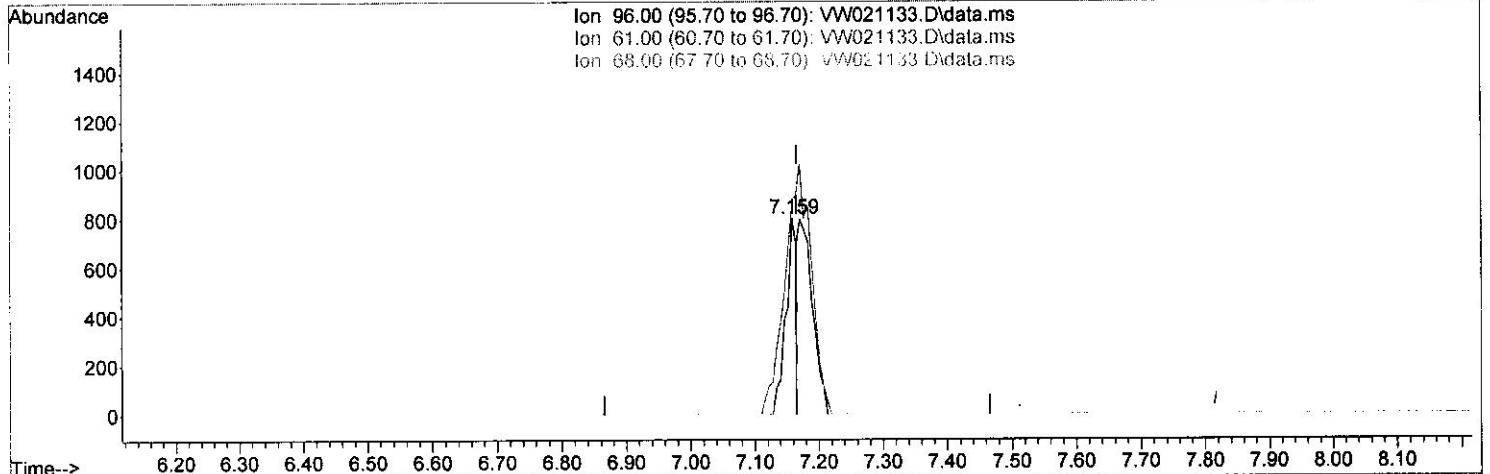
Data Path : Z:\voasrv\HPCHEM1\MSVOA_W\Data\VW120321\
 Data File : VW021133.D
 Acq On : 04 Dec 2021 21:16
 Operator : SY/VA
 Sample : M4885-22
 Misc : 4.86g/10.0mL/MSVOA_W/SOIL
 ALS Vial : 23 Sample Multiplier: 1

Instrument :
 MSVOA_W
 Client Sampled :
 EW9M7

Quant Time: Dec 06 00:51:43 2021
 Quant Method : Z:\voasrv\HPCHEM1\MSVOA_W\Method\SFAMWLM120321SMA.M
 Quant Title : SFAM01.0
 QLast Update : Sat Dec 04 04:50:24 2021
 Response via : Initial Calibration

Manual IntegrationsAPPROVED

Reviewed By :Semsettin Yesilyurt 12/07/2021
 Supervised By :Mahesh Dadoda 12/08/2021



TIC: VW021133.D\data.ms

(20) cis-1,2-Dichloroethene (T)

7.159min (-0.006) 0.67 ug/L

response 934

Ion	Exp%	Act%
96.00	100.00	100.00
61.00	148.20	108.24
68.00	0.00	0.00
0.00	0.00	0.00

Quantitation Report (Qedit)

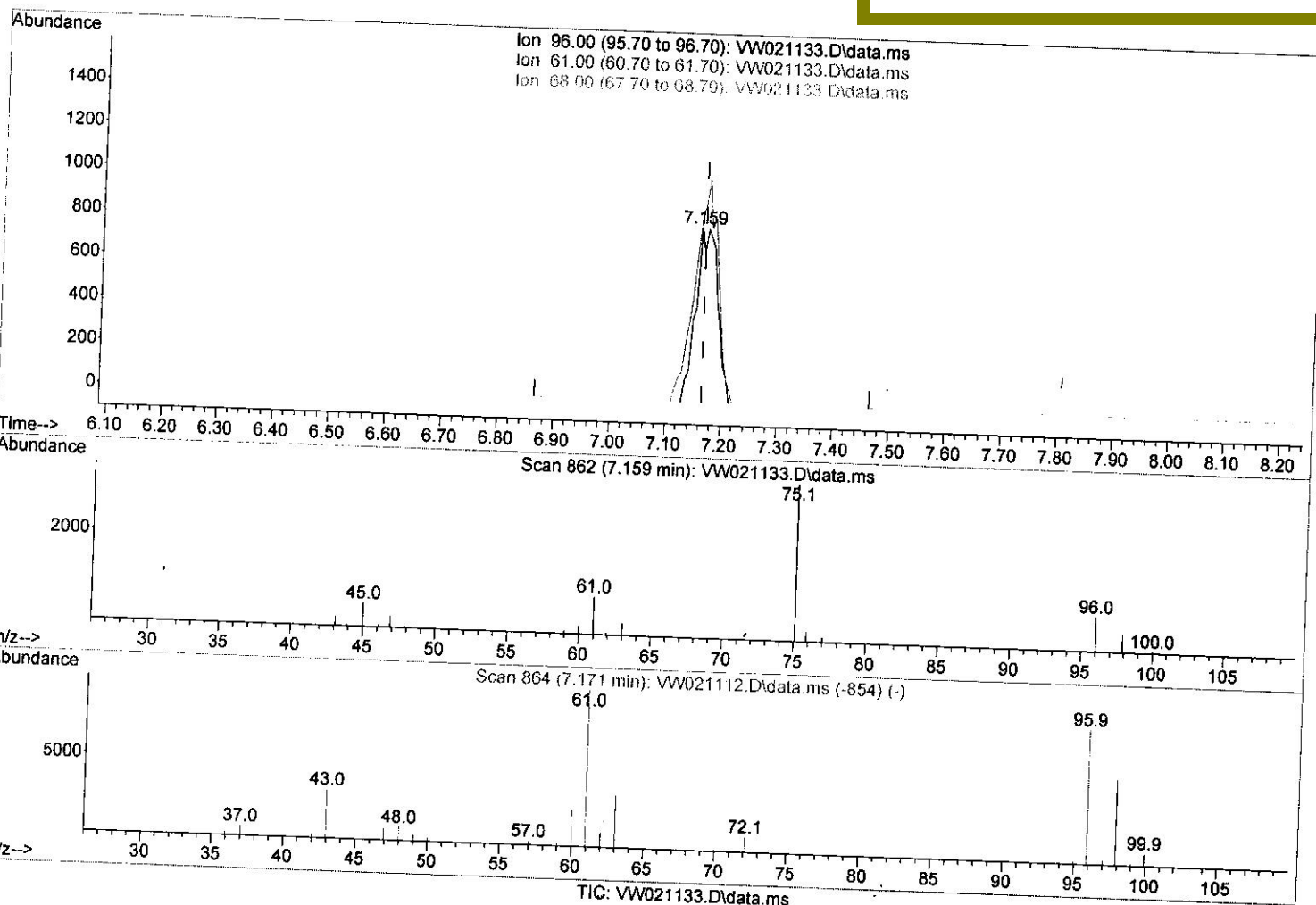
Data Path : Z:\voasrv\HPCHEM1\MSVOA_W\Data\VW120321\
 Data File : VW021133.D
 Acq On : 04 Dec 2021 21:16
 Operator : SY/VA
 Sample : M4885-22
 Misc : 4.86g/10.0mL/MSVOA_W/SOIL
 ALS Vial : 23 Sample Multiplier: 1

Instrument :
 MSVOA_W
 Client Sampled :
 EW9M7

Quant Time: Dec 06 00:51:43 2021
 Quant Method : Z:\voasrv\HPCHEM1\MSVOA_W\Method\SFAMWLM120321SMA.M
 Quant Title : SFAM01.0
 QLast Update : Sat Dec 04 04:50:24 2021
 Response via : Initial Calibration

Manual Integrations APPROVED

Reviewed By : Semsettin Yesilyurt 12/07/2021
 Supervised By : Mahesh Dadoda 12/08/2021



(20) cis-1,2-Dichloroethene (T)

7.159min (-0.006) 1.55 ug/L m 3.21.2021

response 2153

Ion	Exp%	Act%
96.00	100.00	100.00
61.00	148.20	108.24
68.00	0.00	0.00
0.00	0.00	0.00

Quantitation Report (QT Reviewed)

Data Path : Z:\voasrv\HPCHEM1\MSVOA_W\Data\W120321\
 Data File : W021133.D
 Acq On : 04 Dec 2021 21:16
 Operator : SY/VA
 Sample : M4885-22
 Misc : 4.86g/10.0mL/MSVOA_W/SOIL
 ALS Vial : 23 Sample Multiplier: 1

Instrument :
 MSVOA_W
 Client Sampled :
 EW9M7

Quant Time: Dec 06 00:51:43 2021
 Quant Method : Z:\voasrv\HPCHEM1\MSVOA_W\Method\SFAMWLM120321SMA.M
 Quant Title : SFAM01.0
 QLast Update : Sat Dec 04 04:50:24 2021
 Response via : Initial Calibration

Manual Integrations APPROVED

Reviewed By : Semsettin Yesilyurt 12/07/2021
 Supervised By : Mahesh Dadoda 12/08/2021

Compound	R.T.	QIon	Response	Conc	Units	Dev(Min)
Internal Standards						
1) 1,4-Difluorobenzene	8.847	114	94881	25.000	ug/L	# 0.00
28) Chlorobenzene-d5	11.634	117	64603	25.000	ug/L	0.00
58) 1,4-Dichlorobenzene-d4	13.554	152	21222	25.000	ug/L	0.00

System Monitoring Compounds						
4) Vinyl Chloride-d3	2.349	65	45319	34.282	ug/L	0.00
Spiked Amount 25.000	Range 30 - 150		Recovery =	137.120%		
7) Chloroethane-d5	2.885	69	30022	33.926	ug/L	0.00
Spiked Amount 25.000	Range 30 - 150		Recovery =	135.720%		
11) 1,1-Dichloroethene-d2	4.013	63	47907	22.685	ug/L	0.00
Spiked Amount 25.000	Range 45 - 110		Recovery =	90.720%		
21) 2-Butanone-d5	7.079	46	21055	69.827	ug/L	0.00
Spiked Amount 50.000	Range 20 - 135		Recovery =	139.660%#		
24) Chloroform-d	7.652	84	69407	29.210	ug/L	0.00
Spiked Amount 25.000	Range 40 - 150		Recovery =	116.840%		
26) 1,2-Dichloroethane-d4	8.305	65	38901	29.925	ug/L	0.00
Spiked Amount 25.000	Range 70 - 130		Recovery =	119.720%		
32) Benzene-d6	8.274	84	135467	41.011	ug/L	0.00
Spiked Amount 25.000	Range 20 - 135		Recovery =	164.040%#		
36) 1,2-Dichloropropane-d6	9.274	67	37487	40.838	ug/L	0.00
Spiked Amount 25.000	Range 70 - 120		Recovery =	163.360%#		
41) Toluene-d8	10.323	98	113591	33.537	ug/L	0.00
Spiked Amount 25.000	Range 30 - 130		Recovery =	134.160%#		
43) trans-1,3-Dichloroprop...	10.579	79	11875	28.490	ug/L	0.00
Spiked Amount 25.000	Range 30 - 135		Recovery =	113.960%		
47) 2-Hexanone-d5	10.926	63	14887	84.764	ug/L	0.00
Spiked Amount 50.000	Range 20 - 135		Recovery =	169.520%#		
56) 1,1,2,2-Tetrachloroeth...	12.688	84	22120	26.047	ug/L	0.00
Spiked Amount 25.000	Range 45 - 120		Recovery =	104.200%		
66) 1,2-Dichlorobenzene-d4	13.853	152	18026	23.706	ug/L	0.00
Spiked Amount 25.000	Range 75 - 120		Recovery =	94.840%		

Target Compounds						
13) Acetone	4.123	43	3941	14.348	ug/L	94
20) cis-1,2-Dichloroethene	7.159	96	2153m	1.548	ug/L	
27) 1,2-Dichloroethane	8.402	62	2982	1.953	ug/L	97
33) Benzene	8.323	78	108088	29.422	ug/L	100
34) Trichloroethene	9.091	95	291584	287.693	ug/L	98
35) Methylcyclohexane	9.335	83	1099	0.644	ug/L #	86
42) Toluene	10.390	91	120537	28.726	ug/L	97
45) 1,1,2-Trichloroethane	10.786	97	8025	11.528	ug/L	92
46) Tetrachloroethene	10.859	164	51061	55.018	ug/L	90
52) Ethylbenzene	11.731	91	36411	7.708	ug/L	99
53) m,p-Xylene	11.835	106	136966	70.089	ug/L	88
54) o-Xylene	12.164	106	61654	33.463	ug/L	95
55) Styrene	12.176	104	128406	40.905	ug/L	95
60) Isopropylbenzene	12.463	105	4864	1.649	ug/L #	86
62) 1,3,5-Trimethylbenzene	12.944	105	655984	265.590	ug/L	95
63) 1,2,4-Trimethylbenzene	13.249	105	665389	267.857	ug/L	99

mD
 12/20/21

(#) = qualifier out of range (m) = manual integration (+) = signals summed