

Data Path : Z:\voasrv\HPCHEM1\MSVOA_W\Data\VW120321\
 Data File : VW021066.D
 Acq On : 03 Dec 2021 16:04
 Operator : SY/VA
 Sample : M4881-03RE
 Misc : 3.61g/10.0mL/MSVOA_W/SOIL
 ALS Vial : 14 Sample Multiplier: 1

Instrument :
 MSVOA_W
ClientSampleId :
 EW9D9RE

Manual Integrations
APPROVED
 Reviewed By :Semsettin Yesilyurt 12/05/2021
 Supervised By :Amit Patel 12/06/2021

Quant Time: Dec 04 01:39:13 2021
 Quant Method : Z:\voasrv\HPCHEM1\MSVOA_W\Method\SFAMWLM120321SMA.M
 Quant Title : SFAM01.0
 QLast Update : Sat Dec 04 01:31:24 2021
 Response via : Initial Calibration

Compound	R.T.	QIon	Response	Conc	Units	Dev(Min)
Internal Standards						
1) 1,4-Difluorobenzene	8.841	114	54151	25.000	ug/L	# 0.00
28) Chlorobenzene-d5	11.633	117	28114	25.000	ug/L	0.00
58) 1,4-Dichlorobenzene-d4	13.560	152	6106	25.000	ug/L	0.00
System Monitoring Compounds						
4) Vinyl Chloride-d3	2.355	65	17839	23.645	ug/L	0.00
Spiked Amount	25.000	Range 30 - 150	Recovery	=	94.560%	
7) Chloroethane-d5	2.885	69	15287	30.268	ug/L	0.00
Spiked Amount	25.000	Range 30 - 150	Recovery	=	121.080%	
11) 1,1-Dichloroethene-d2	4.019	63	21025	17.444	ug/L	0.00
Spiked Amount	25.000	Range 45 - 110	Recovery	=	69.760%	
21) 2-Butanone-d5	7.079	46	9497	55.186	ug/L	0.00
Spiked Amount	50.000	Range 20 - 135	Recovery	=	110.380%	
24) Chloroform-d	7.646	84	46211	34.075	ug/L	0.00
Spiked Amount	25.000	Range 40 - 150	Recovery	=	136.320%	
26) 1,2-Dichloroethane-d4	8.305	65	22742	30.653	ug/L	0.00
Spiked Amount	25.000	Range 70 - 130	Recovery	=	122.600%	
32) Benzene-d6	8.274	84	64473	44.851	ug/L	0.00
Spiked Amount	25.000	Range 20 - 135	Recovery	=	179.400%#	
36) 1,2-Dichloropropane-d6	9.274	67	24115	60.367	ug/L	0.00
Spiked Amount	25.000	Range 70 - 120	Recovery	=	241.480%#	
41) Toluene-d8	10.323	98	44995	30.526	ug/L	0.00
Spiked Amount	25.000	Range 30 - 130	Recovery	=	122.120%	
43) trans-1,3-Dichloroprop...	10.579	79	4805	26.490	ug/L	0.00
Spiked Amount	25.000	Range 30 - 135	Recovery	=	105.960%	
47) 2-Hexanone-d5	10.920	63	5878	76.907	ug/L	0.00
Spiked Amount	50.000	Range 20 - 135	Recovery	=	153.820%#	
56) 1,1,2,2-Tetrachloroeth...	12.688	84	14298	38.688	ug/L	0.00
Spiked Amount	25.000	Range 45 - 120	Recovery	=	154.760%#	
66) 1,2-Dichlorobenzene-d4	13.853	152	5710	26.100	ug/L	0.00
Spiked Amount	25.000	Range 75 - 120	Recovery	=	104.400%	
Target Compounds						
13) Acetone	4.129	43	997m	6.360	ug/L	
16) Methylene chloride	4.921	84	4519	5.297	ug/L	77
29) Cyclohexane	7.963	56	763m	1.230	ug/L	
35) Methylcyclohexane	9.335	83	1773	2.388	ug/L	89
42) Toluene	10.384	91	2242	1.228	ug/L	94
62) 1,3,5-Trimethylbenzene	12.944	105	346	0.487	ug/L	88
63) 1,2,4-Trimethylbenzene	13.249	105	616	0.862	ug/L	88

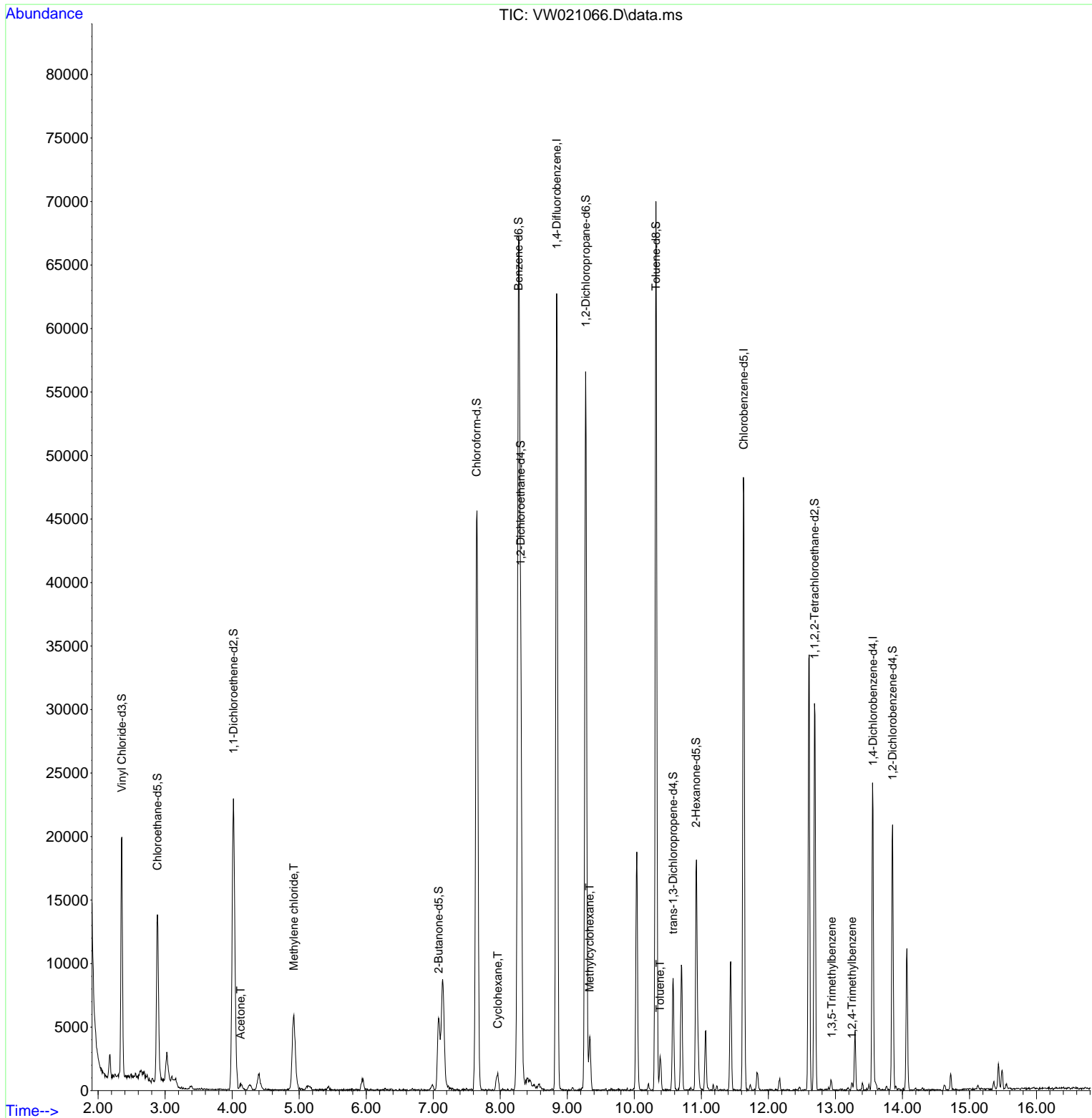
(#) = qualifier out of range (m) = manual integration (+) = signals summed

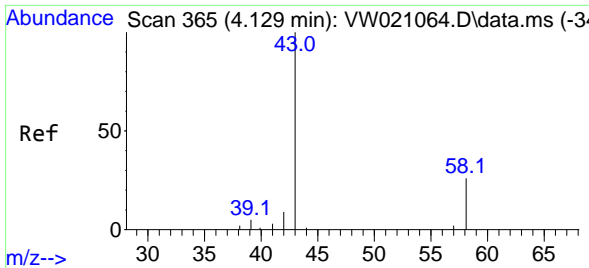
Data Path : Z:\voasrv\HPCHEM1\MSVOA_W\Data\VW120321\
 Data File : VW021066.D
 Acq On : 03 Dec 2021 16:04
 Operator : SY/VA
 Sample : M4881-03RE
 Misc : 3.61g/10.0mL/MSVOA_W/SOIL
 ALS Vial : 14 Sample Multiplier: 1

Instrument :
 MSVOA_W
ClientSampleId :
 EW9D9RE

Quant Time: Dec 04 01:39:13 2021
 Quant Method : Z:\voasrv\HPCHEM1\MSVOA_W\Method\SFAMWLM120321SMA.M
 Quant Title : SFAM01.0
 QLast Update : Sat Dec 04 01:31:24 2021
 Response via : Initial Calibration

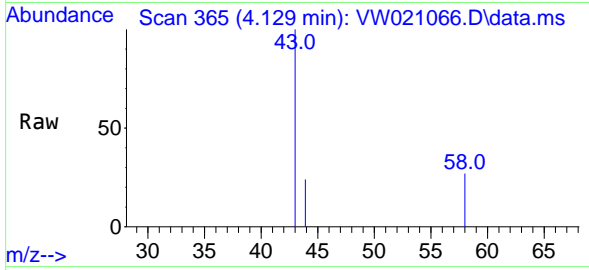
Manual Integrations
APPROVED
 Reviewed By :Semsettin Yesilyurt 12/05/2021
 Supervised By :Amit Patel 12/06/2021





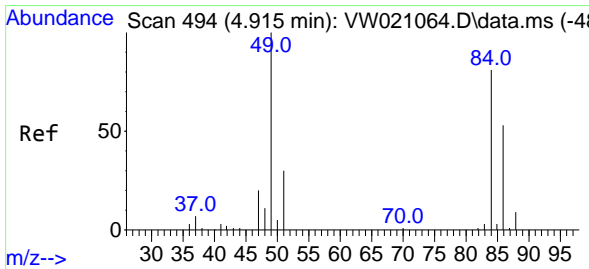
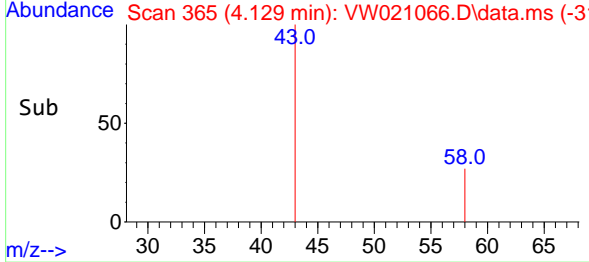
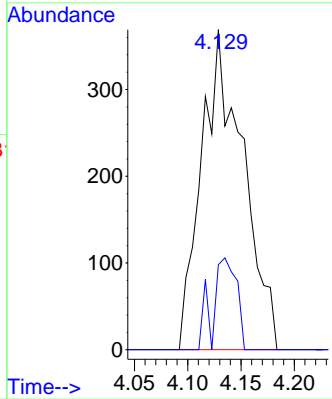
#13
 Acetone
 Concen: 6.360 ug/L m
 RT: 4.129 min Scan# 30
 Delta R.T. -0.000 min
 Lab File: VW021066.D
 Acq: 03 Dec 2021 16:04

Instrument : MSVOA_W
 ClientSampleId : EW9D9RE

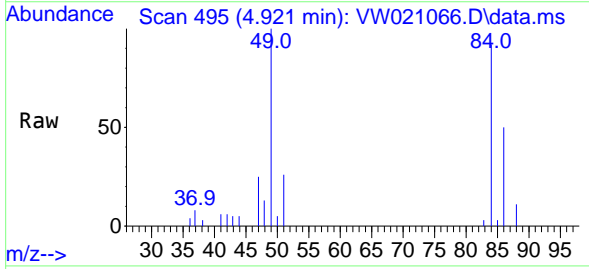


Tgt Ion: 43 Resp: 99
 Ion Ratio Lower Upper
 43 100
 58 13.6 0.0 52.8

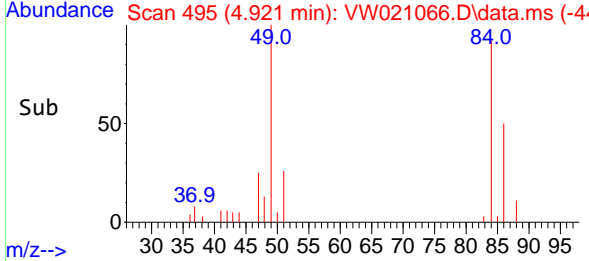
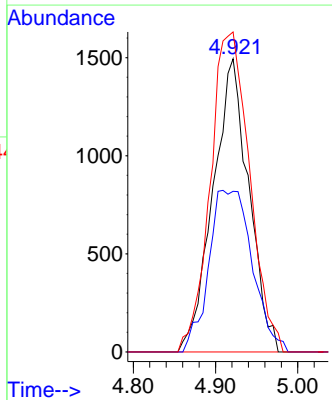
Manual Integrations
APPROVED
 Reviewed By :Semsettin Yesilyurt 12/05/2021
 Supervised By :Amit Patel 12/06/2021

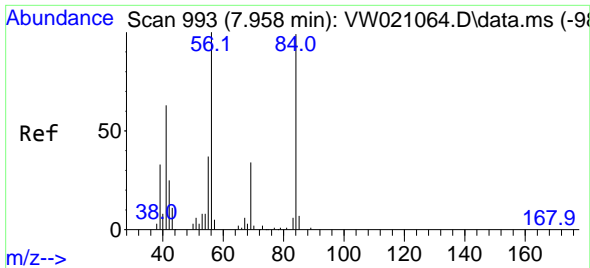


#16
 Methylene chloride
 Concen: 5.297 ug/L
 RT: 4.921 min Scan# 495
 Delta R.T. 0.006 min
 Lab File: VW021066.D
 Acq: 03 Dec 2021 16:04



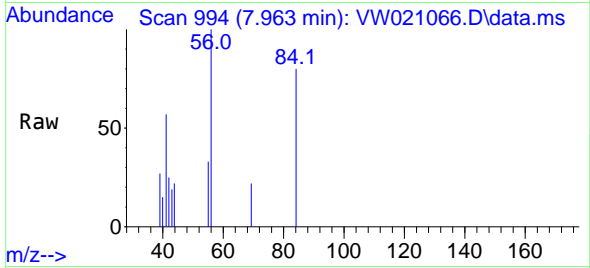
Tgt Ion: 84 Resp: 4519
 Ion Ratio Lower Upper
 84 100
 86 54.8 45.5 84.5
 49 109.2 100.5 186.7





#29
 Cyclohexane
 Concen: 1.230 ug/L m
 RT: 7.963 min Scan# 994
 Delta R.T. 0.006 min
 Lab File: VW021066.D
 Acq: 03 Dec 2021 16:04

Instrument : MSVOA_W
 ClientSampleId : EW9D9RE

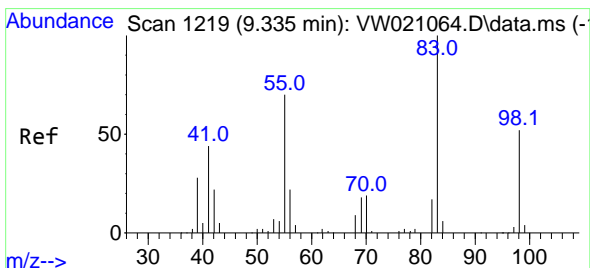
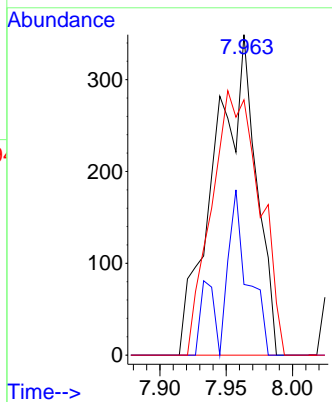
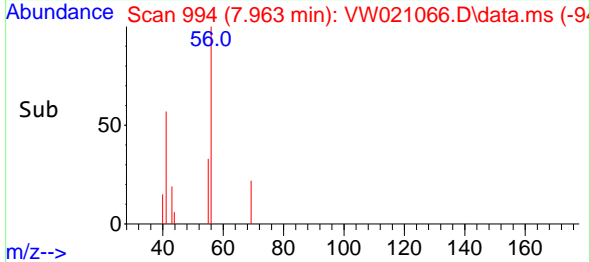


Tgt Ion: 56 Resp: 76

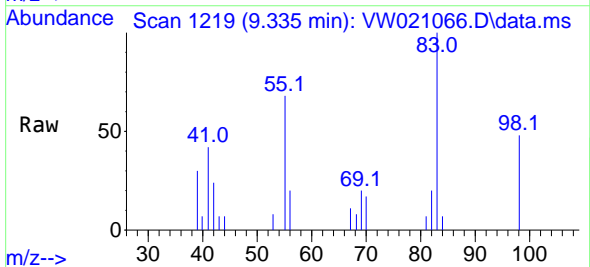
Ion	Ratio	Lower	Upper
56	100		
69	20.8	23.5	35.3
84	95.2	63.4	95.2

Manual Integrations
APPROVED

Reviewed By :Semsettin Yesilyurt 12/05/2021
 Supervised By :Amit Patel 12/06/2021

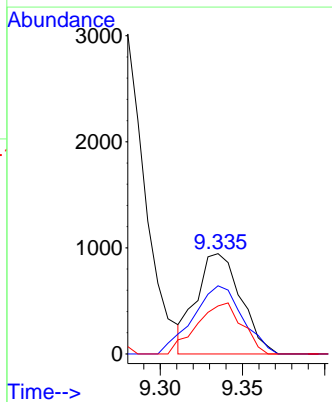
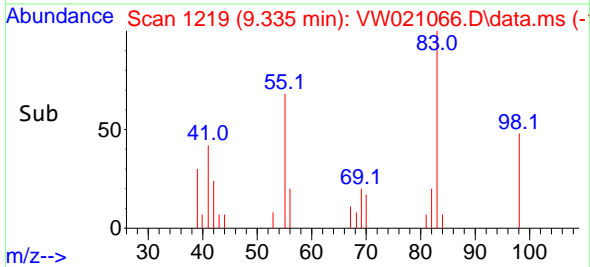


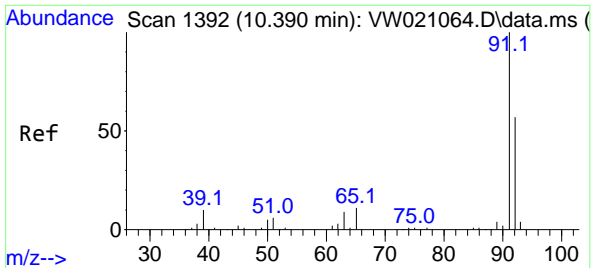
#35
 Methylcyclohexane
 Concen: 2.388 ug/L
 RT: 9.335 min Scan# 1219
 Delta R.T. -0.000 min
 Lab File: VW021066.D
 Acq: 03 Dec 2021 16:04



Tgt Ion: 83 Resp: 1773

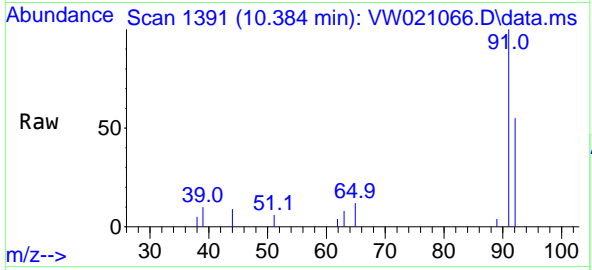
Ion	Ratio	Lower	Upper
83	100		
55	75.5	70.8	106.2
98	51.7	37.7	56.5





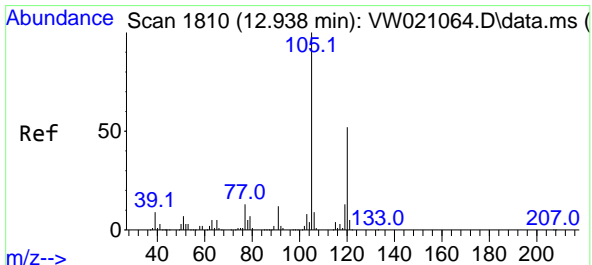
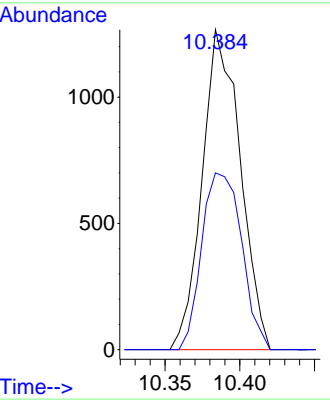
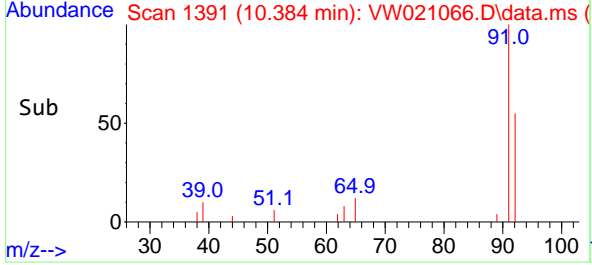
#42
 Toluene
 Concen: 1.228 ug/L
 RT: 10.384 min Scan# 11
 Delta R.T. -0.006 min
 Lab File: VW021066.D
 Acq: 03 Dec 2021 16:04

Instrument : MSVOA_W
 ClientSampleId : EW9D9RE

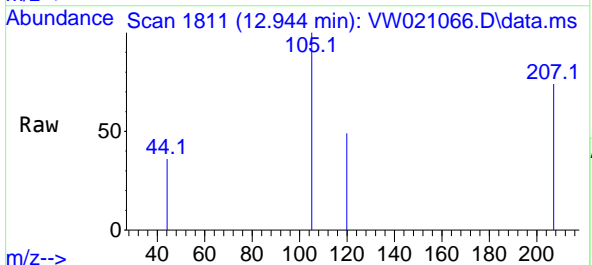


Tgt Ion: 91 Resp: 224
 Ion Ratio Lower Upper
 91 100
 92 55.2 41.7 77.5

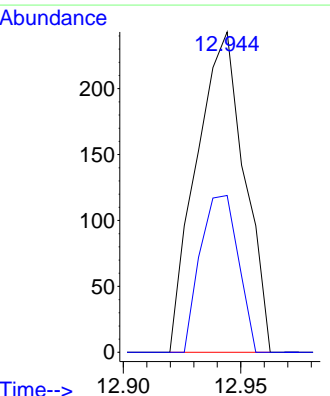
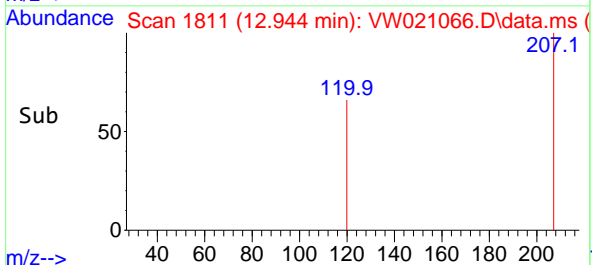
Manual Integrations
APPROVED
 Reviewed By :Semsettin Yesilyurt 12/05/2021
 Supervised By :Amit Patel 12/06/2021

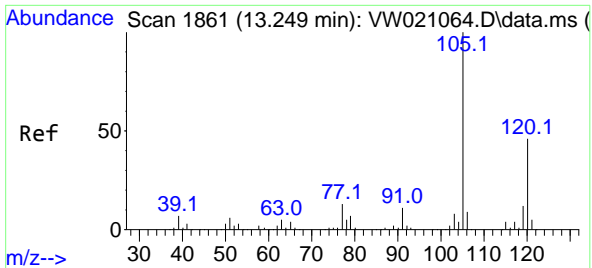


#62
 1,3,5-Trimethylbenzene
 Concen: 0.487 ug/L
 RT: 12.944 min Scan# 1811
 Delta R.T. 0.006 min
 Lab File: VW021066.D
 Acq: 03 Dec 2021 16:04



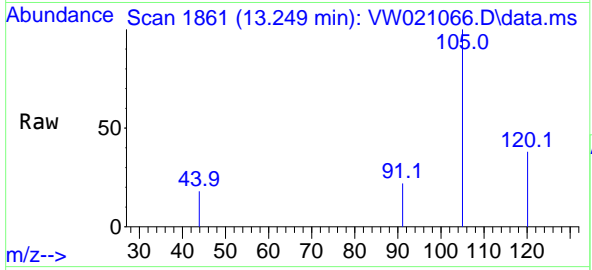
Tgt Ion:105 Resp: 346
 Ion Ratio Lower Upper
 105 100
 120 38.7 37.4 56.2





#63
 1,2,4-Trimethylbenzene
 Concen: 0.862 ug/L
 RT: 13.249 min Scan# 1861
 Delta R.T. -0.000 min
 Lab File: VW021066.D
 Acq: 03 Dec 2021 16:04

Instrument :
 MSVOA_W
ClientSampleId :
 EW9D9RE



Tgt Ion: 105 Resp: 610
 Ion Ratio Lower Upper
 105 100
 120 36.4 35.0 52.6

Manual Integrations
APPROVED
 Reviewed By : Semsettin Yesilyurt 12/05/2021
 Supervised By : Amit Patel 12/06/2021

