

Data Path : Z:\voasrv\HPCHEM1\MSVOA_W\Data\VW120321\
 Data File : VW021106.D
 Acq On : 04 Dec 2021 08:51
 Operator : SY/VA
 Sample : M4885-01
 Misc : 5.06g/10.0mL/MSVOA_W/SOIL
 ALS Vial : 56 Sample Multiplier: 1

Instrument :
 MSVOA_W
ClientSampleId :
 EW9K8

Quant Time: Dec 06 00:47:58 2021
 Quant Method : Z:\voasrv\HPCHEM1\MSVOA_W\Method\SFAMWLM120321SMA.M
 Quant Title : SFAM01.0
 QLast Update : Sat Dec 04 04:50:24 2021
 Response via : Initial Calibration

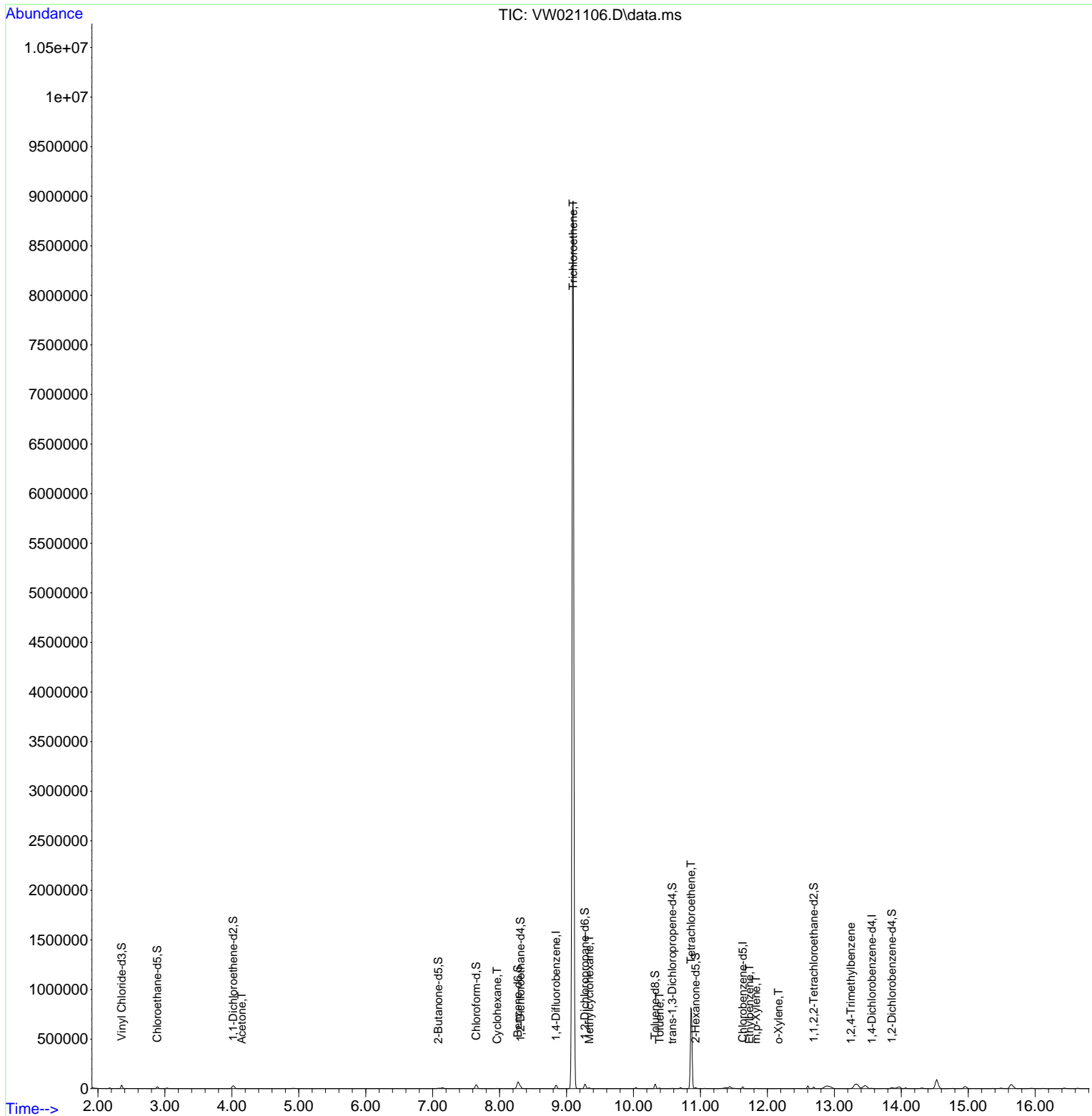
Compound	R.T.	QIon	Response	Conc	Units	Dev(Min)
Internal Standards						
1) 1,4-Difluorobenzene	8.842	114	31538	25.000	ug/L	# 0.00
28) Chlorobenzene-d5	11.634	117	10360	25.000	ug/L	0.00
58) 1,4-Dichlorobenzene-d4	13.560	152	1607	25.000	ug/L	0.00
System Monitoring Compounds						
4) Vinyl Chloride-d3	2.355	65	29941	68.139	ug/L	0.00
Spiked Amount	25.000	Range 30 - 150	Recovery	=	272.560%#	
7) Chloroethane-d5	2.885	69	20131	68.438	ug/L	0.00
Spiked Amount	25.000	Range 30 - 150	Recovery	=	273.760%#	
11) 1,1-Dichloroethene-d2	4.019	63	26636	37.945	ug/L	0.00
Spiked Amount	25.000	Range 45 - 110	Recovery	=	151.760%#	
21) 2-Butanone-d5	7.086	46	7379	73.623	ug/L	0.00
Spiked Amount	50.000	Range 20 - 135	Recovery	=	147.240%#	
24) Chloroform-d	7.653	84	38195	48.359	ug/L	0.00
Spiked Amount	25.000	Range 40 - 150	Recovery	=	193.440%#	
26) 1,2-Dichloroethane-d4	8.311	65	17945	41.530	ug/L	0.00
Spiked Amount	25.000	Range 70 - 130	Recovery	=	166.120%#	
32) Benzene-d6	8.275	84	64707	122.154	ug/L	0.00
Spiked Amount	25.000	Range 20 - 135	Recovery	=	488.600%#	
36) 1,2-Dichloropropane-d6	9.274	67	18710	127.100	ug/L	0.00
Spiked Amount	25.000	Range 70 - 120	Recovery	=	508.400%#	
41) Toluene-d8	10.323	98	30496	56.146	ug/L	0.00
Spiked Amount	25.000	Range 30 - 130	Recovery	=	224.600%#	
43) trans-1,3-Dichloroprop...	10.579	79	2236	33.452	ug/L	0.00
Spiked Amount	25.000	Range 30 - 135	Recovery	=	133.800%	
47) 2-Hexanone-d5	10.927	63	3411	121.110	ug/L	0.00
Spiked Amount	50.000	Range 20 - 135	Recovery	=	242.220%#	
56) 1,1,2,2-Tetrachloroeth...	12.694	84	7561	55.519	ug/L	0.00
Spiked Amount	25.000	Range 45 - 120	Recovery	=	222.080%#	
66) 1,2-Dichlorobenzene-d4	13.859	152	2276	39.529	ug/L	0.00
Spiked Amount	25.000	Range 75 - 120	Recovery	=	158.120%#	
Target Compounds						
13) Acetone	4.147	43	1187	13.001	ug/L	88
29) Cyclohexane	7.964	56	1592	6.966	ug/L	89
34) Trichloroethene	9.098	95	2893832	17804.593	ug/L	92
35) Methylcyclohexane	9.341	83	3263	11.927	ug/L	87
42) Toluene	10.390	91	5034	7.481	ug/L	90
46) Tetrachloroethene	10.859	164	184790	1241.615	ug/L	91
52) Ethylbenzene	11.731	91	689	0.910	ug/L	94
53) m,p-Xylene	11.829	106	1053	3.360	ug/L	65
54) o-Xylene	12.164	106	736	2.491	ug/L	65
63) 1,2,4-Trimethylbenzene	13.249	105	627	3.333	ug/L	91

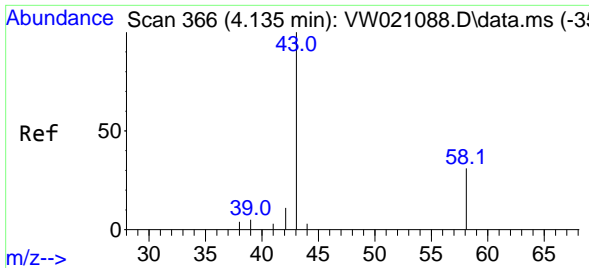
(#) = qualifier out of range (m) = manual integration (+) = signals summed

Data Path : Z:\voasrv\HPCHEM1\MSVOA_W\Data\VW120321\
 Data File : VW021106.D
 Acq On : 04 Dec 2021 08:51
 Operator : SY/VA
 Sample : M4885-01
 Misc : 5.06g/10.0mL/MSVOA_W/SOIL
 ALS Vial : 56 Sample Multiplier: 1

Instrument :
 MSVOA_W
 ClientSampleId :
 EW9K8

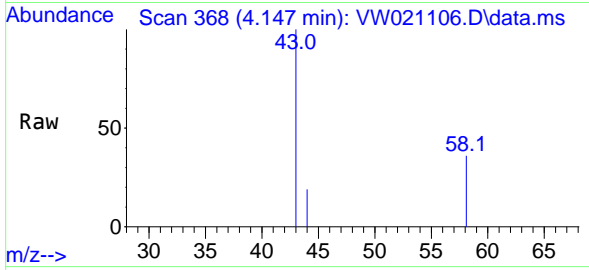
Quant Time: Dec 06 00:47:58 2021
 Quant Method : Z:\voasrv\HPCHEM1\MSVOA_W\Method\SFAMWLM120321SMA.M
 Quant Title : SFAM01.0
 QLast Update : Sat Dec 04 04:50:24 2021
 Response via : Initial Calibration



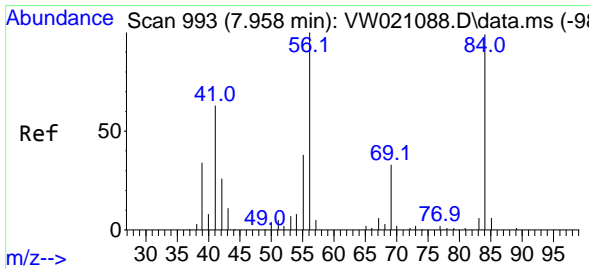
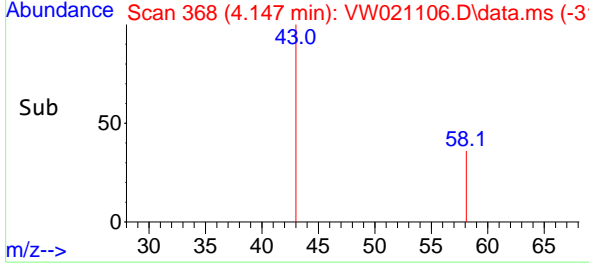
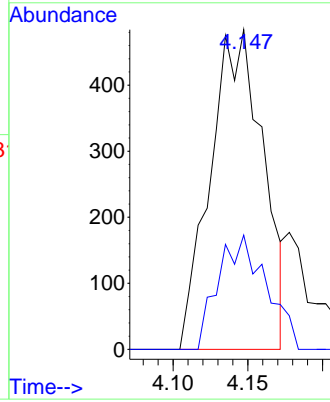


#13
 Acetone
 Concen: 13.001 ug/L
 RT: 4.147 min Scan# 30
 Delta R.T. 0.012 min
 Lab File: VW021106.D
 Acq: 04 Dec 2021 08:51

Instrument : MSVOA_W
 ClientSampleId : EW9K8

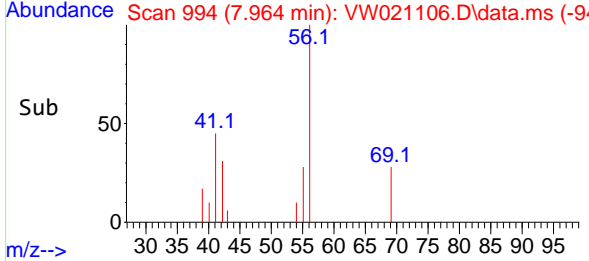
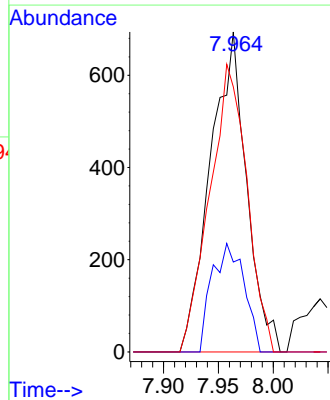
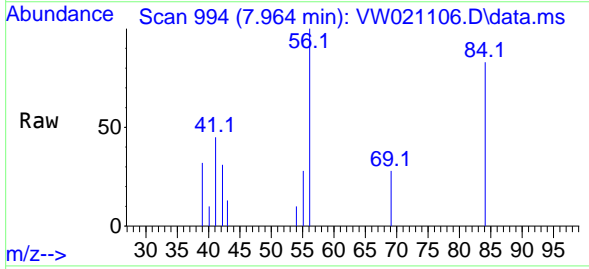


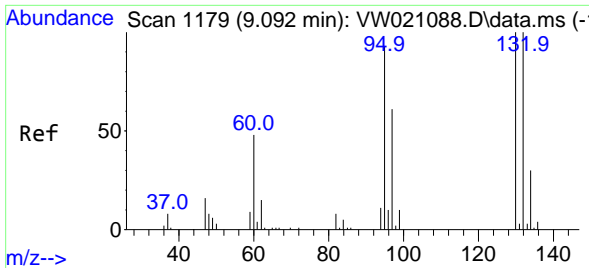
Tgt Ion: 43 Resp: 1187
 Ion Ratio Lower Upper
 43 100
 58 32.4 0.0 52.8



#29
 Cyclohexane
 Concen: 6.966 ug/L
 RT: 7.964 min Scan# 994
 Delta R.T. 0.006 min
 Lab File: VW021106.D
 Acq: 04 Dec 2021 08:51

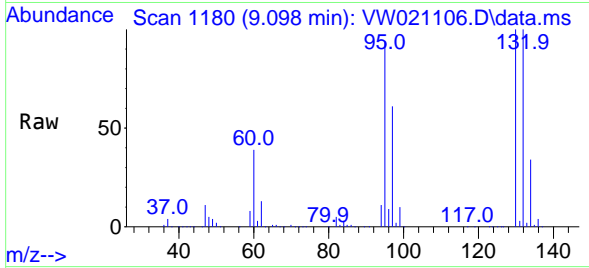
Tgt Ion: 56 Resp: 1592
 Ion Ratio Lower Upper
 56 100
 69 30.0 23.5 35.3
 84 92.6 63.4 95.2





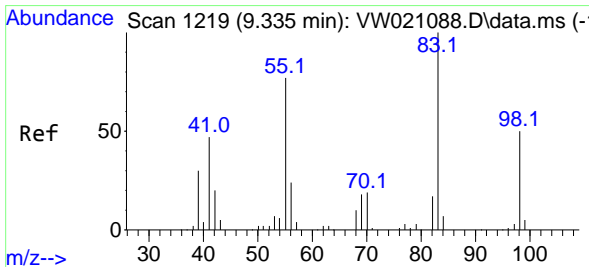
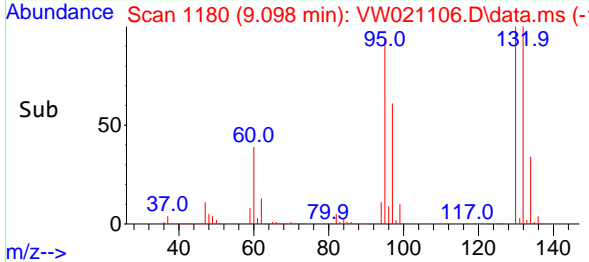
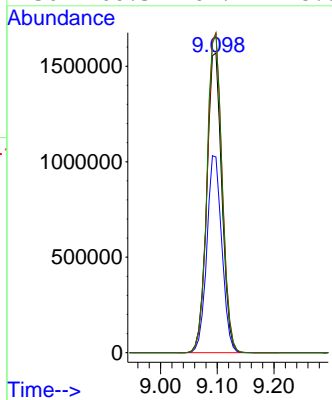
#34
 Trichloroethene
 Concen: 17804.593 ug/L
 RT: 9.098 min Scan# 1179
 Delta R.T. 0.006 min
 Lab File: VW021106.D
 Acq: 04 Dec 2021 08:51

Instrument : MSVOA_W
 ClientSampleId : EW9K8



Tgt Ion: 95 Resp: 2893832

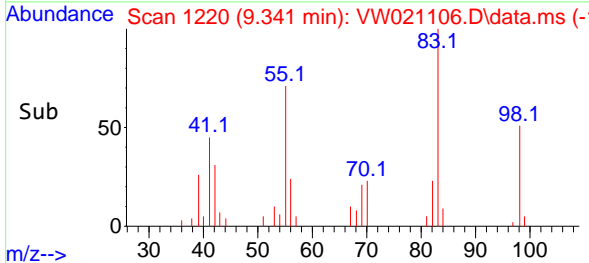
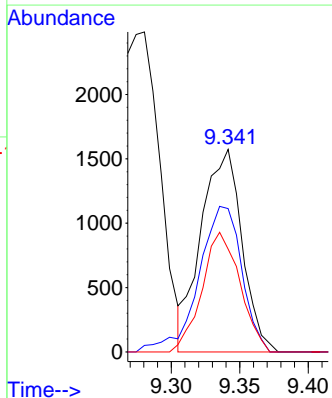
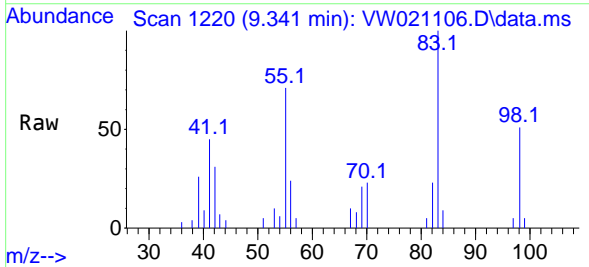
Ion	Ratio	Lower	Upper
95	100		
97	65.3	47.0	87.2
132	106.8	65.5	121.6
130	106.3	69.4	128.8

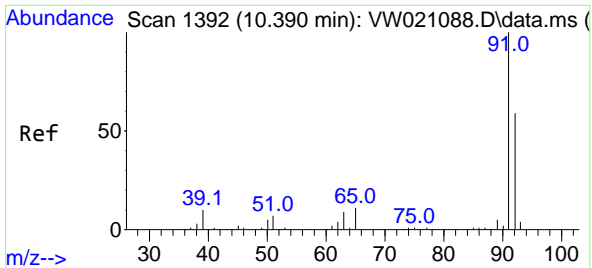


#35
 Methylcyclohexane
 Concen: 11.927 ug/L
 RT: 9.341 min Scan# 1220
 Delta R.T. 0.006 min
 Lab File: VW021106.D
 Acq: 04 Dec 2021 08:51

Tgt Ion: 83 Resp: 3263

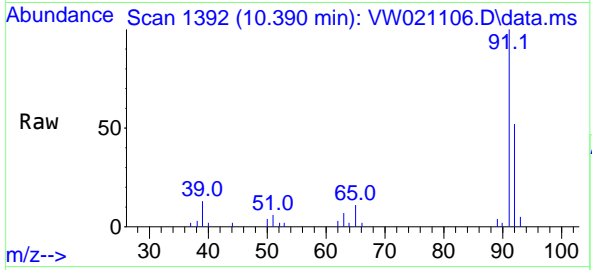
Ion	Ratio	Lower	Upper
83	100		
55	75.7	70.8	106.2
98	55.0	37.7	56.5



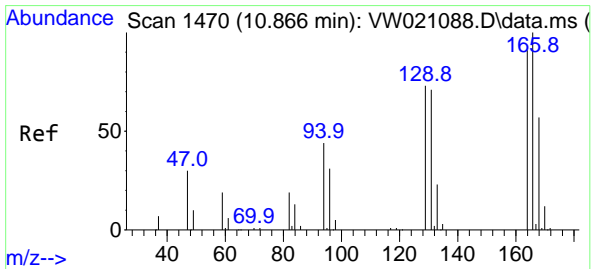
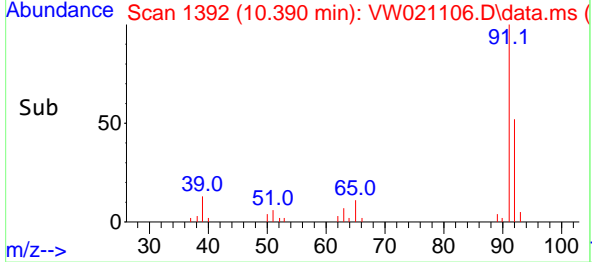
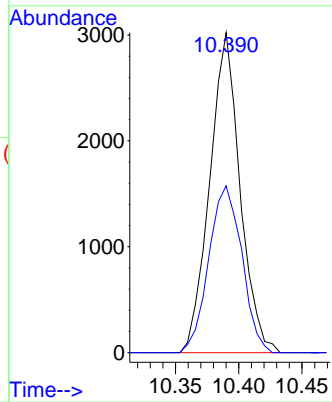


#42
 Toluene
 Concen: 7.481 ug/L
 RT: 10.390 min Scan# 11
 Delta R.T. -0.000 min
 Lab File: VW021106.D
 Acq: 04 Dec 2021 08:51

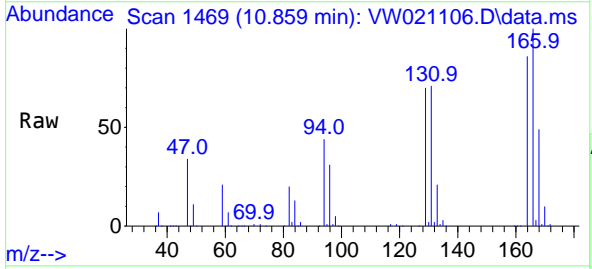
Instrument : MSVOA_W
 ClientSampleId : EW9K8



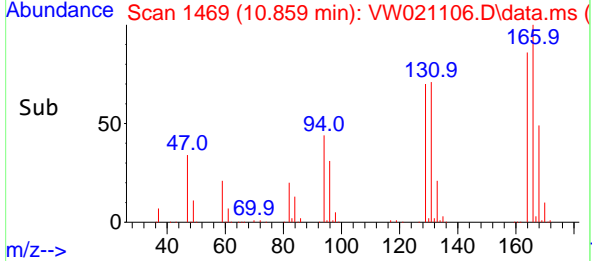
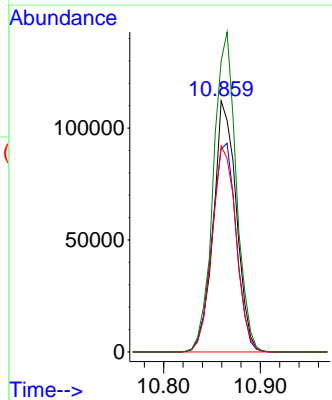
Tgt Ion: 91 Resp: 5034
 Ion Ratio Lower Upper
 91 100
 92 52.2 41.7 77.5

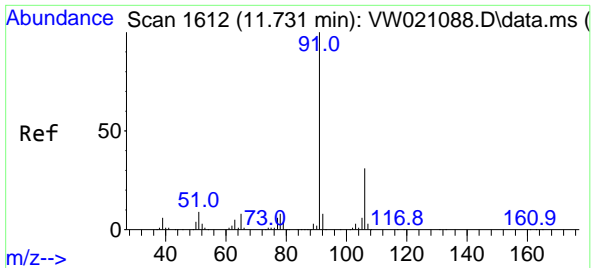


#46
 Tetrachloroethene
 Concen: 1241.615 ug/L
 RT: 10.859 min Scan# 1469
 Delta R.T. -0.006 min
 Lab File: VW021106.D
 Acq: 04 Dec 2021 08:51



Tgt Ion:164 Resp: 184790
 Ion Ratio Lower Upper
 164 100
 129 80.9 65.5 121.7
 131 82.1 59.7 110.9
 166 116.0 88.7 164.7

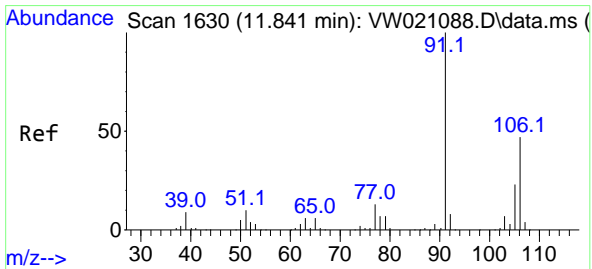
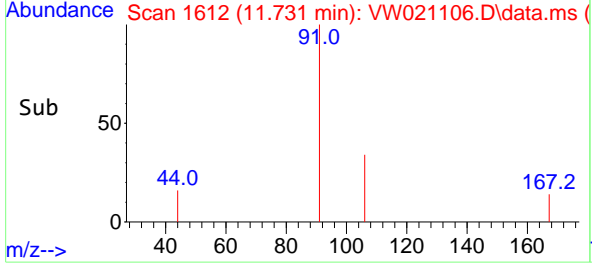
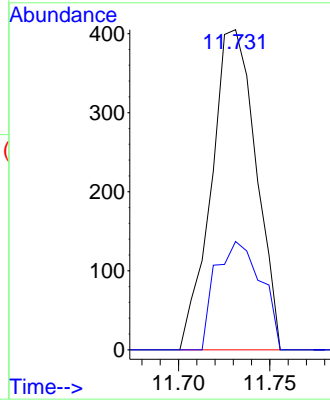
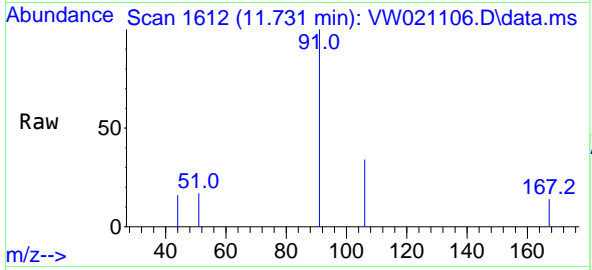




#52
 Ethylbenzene
 Concen: 0.910 ug/L
 RT: 11.731 min Scan# 1106
 Delta R.T. -0.000 min
 Lab File: VW021106.D
 Acq: 04 Dec 2021 08:51

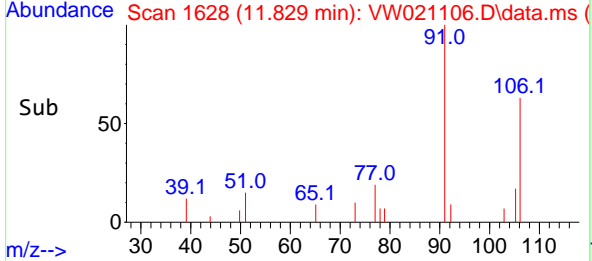
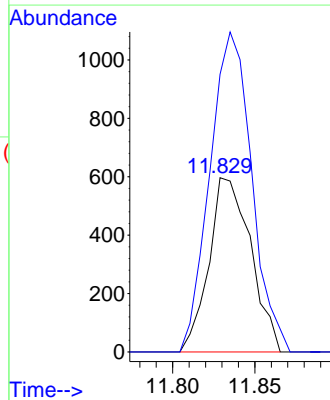
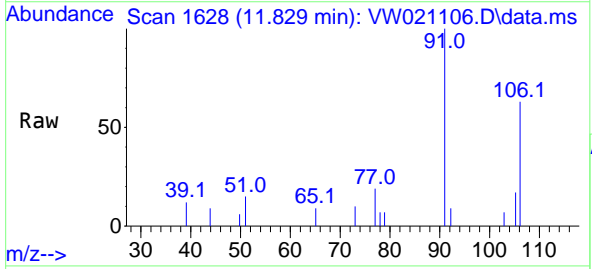
Instrument : MSVOA_W
 ClientSampleId : EW9K8

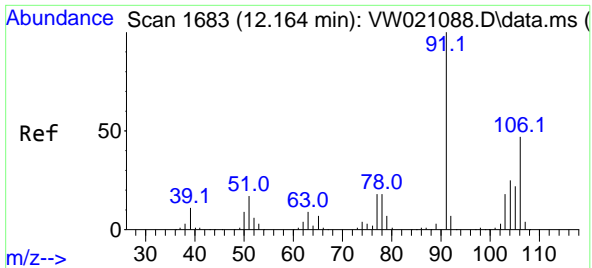
Tgt Ion: 91 Resp: 689
 Ion Ratio Lower Upper
 91 100
 106 33.8 21.5 39.9



#53
 m,p-Xylene
 Concen: 3.360 ug/L
 RT: 11.829 min Scan# 1628
 Delta R.T. -0.012 min
 Lab File: VW021106.D
 Acq: 04 Dec 2021 08:51

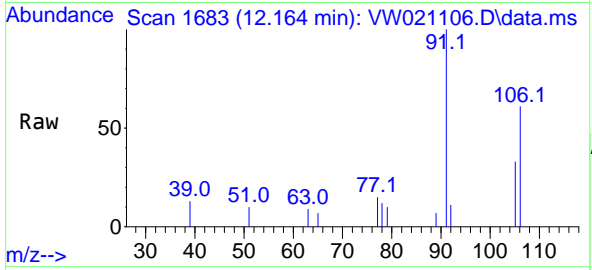
Tgt Ion: 106 Resp: 1053
 Ion Ratio Lower Upper
 106 100
 91 159.3 149.9 278.3



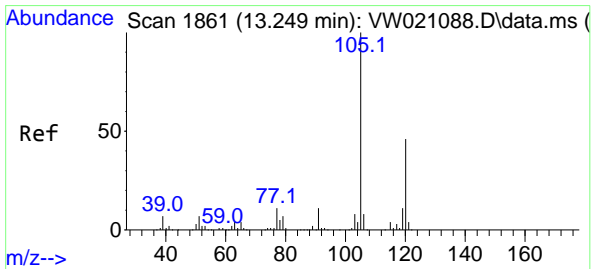
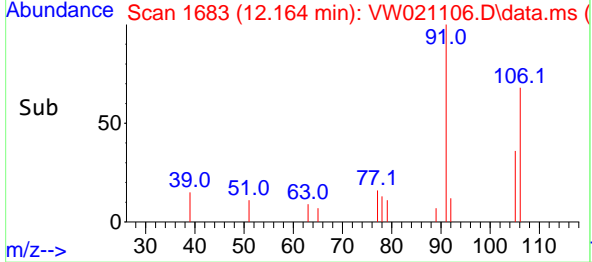
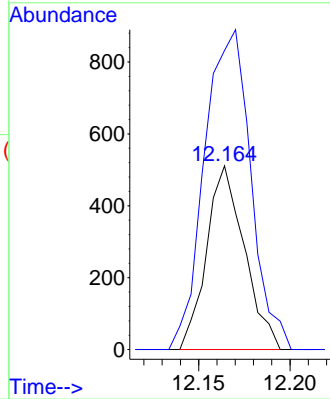


#54
 o-Xylene
 Concen: 2.491 ug/L
 RT: 12.164 min Scan# 1106
 Delta R.T. -0.000 min
 Lab File: VW021106.D
 Acq: 04 Dec 2021 08:51

Instrument : MSVOA_W
 ClientSampleId : EW9K8



Tgt Ion:106 Resp: 736
 Ion Ratio Lower Upper
 106 100
 91 162.8 153.6 285.3



#63
 1,2,4-Trimethylbenzene
 Concen: 3.333 ug/L
 RT: 13.249 min Scan# 1861
 Delta R.T. -0.000 min
 Lab File: VW021106.D
 Acq: 04 Dec 2021 08:51

Tgt Ion:105 Resp: 627
 Ion Ratio Lower Upper
 105 100
 120 38.3 35.0 52.6

