

Data Path : Z:\voasrv\HPCHEM1\MSVOA\_W\Data\VW120321\  
 Data File : VW021108.D  
 Acq On : 04 Dec 2021 09:39  
 Operator : SY/VA  
 Sample : M4885-03  
 Misc : 5.06g/10.0mL/MSVOA\_W/SOIL  
 ALS Vial : 58 Sample Multiplier: 1

Instrument :  
 MSVOA\_W  
 ClientSampleId :  
 EW9L0

Integration Parameters: LSCINT.P

Integrator: RTE  
 Smoothing : OFF  
 Sampling : 1  
 Start Thrs: 0.2  
 Stop Thrs : 0

Filtering: 5  
 Min Area: 0 % of largest Peak  
 Max Peaks: 100  
 Peak Location: TOP

If leading or trailing edge < 100 prefer < Baseline drop else tangent >  
 Peak separation: 5

Method : Z:\voasrv\HPCHEM1\MSVOA\_W\Method\SFAMWLM120321SMA.M  
 Title : SFAM01.0

Signal : TIC: VW021108.D\data.ms

peak #	R.T. min	first scan	max scan	last scan	PK TY	peak height	corr. area	corr. % max.	% of total
1	2.355	69	74	83	rVB	15334	25046	9.76%	1.243%
2	2.885	155	161	170	rVB	11249	22780	8.88%	1.130%
3	4.019	337	347	360	rBV	19756	55260	21.54%	2.742%
4	4.141	361	367	376	rVB2	286	763	0.30%	0.038%
5	4.428	407	414	425	rVB	726	2312	0.90%	0.115%
6	4.787	470	473	476	rVB	117	154	0.06%	0.008%
7	4.830	476	480	482	rBV	119	183	0.07%	0.009%
8	4.928	485	496	507	rBV2	4579	14140	5.51%	0.702%
9	5.080	518	521	522	rBV	163	145	0.06%	0.007%
10	5.123	525	528	530	rBV2	199	290	0.11%	0.014%
11	5.342	561	564	567	rBV2	143	202	0.08%	0.010%
12	5.440	575	580	581	rBB2	99	114	0.04%	0.006%
13	5.458	581	583	586	rBB	125	118	0.05%	0.006%
14	5.519	591	593	596	rBB	133	153	0.06%	0.008%
15	5.665	614	617	619	rBV	73	118	0.05%	0.006%
16	5.866	645	650	653	rBB2	157	256	0.10%	0.013%
17	5.946	661	663	667	rVB2	292	229	0.09%	0.011%
18	6.135	692	694	696	rBV	161	150	0.06%	0.007%
19	6.251	712	713	715	rBV	148	117	0.05%	0.006%
20	6.342	726	728	732	rVB	185	229	0.09%	0.011%
21	6.385	732	735	737	rBB	158	147	0.06%	0.007%
22	6.677	780	783	784	rBV	112	108	0.04%	0.005%
23	6.714	788	789	792	rBB	137	120	0.05%	0.006%
24	6.854	809	812	815	rBB	145	156	0.06%	0.008%
25	6.970	829	831	834	rBB	145	128	0.05%	0.006%
26	7.086	840	850	854	rBV2	7661	19084	7.44%	0.947%
27	7.348	892	893	896	rBV	119	128	0.05%	0.006%
28	7.409	901	903	904	rBV	164	108	0.04%	0.005%
29	7.519	919	921	924	rBB	133	112	0.04%	0.006%
30	7.653	931	943	956	rBB	41491	103226	40.24%	5.122%
31	7.750	956	959	963	rBB	78	142	0.06%	0.007%
32	7.811	966	969	971	rBB	142	127	0.05%	0.006%
33	7.921	984	987	988	rVB	135	139	0.05%	0.007%
34	8.128	1019	1021	1024	rBB	119	106	0.04%	0.005%
35	8.165	1024	1027	1028	rBV	128	133	0.05%	0.007%
36	8.275	1035	1045	1059	rBV2	79946	256520	100.00%	12.729%

Data Path : Z:\voasrv\HPCHEM1\MSVOA\_W\Data\VW120321\  
 Data File : VW021108.D  
 Acq On : 04 Dec 2021 09:39  
 Operator : SY/VA  
 Sample : M4885-03  
 Misc : 5.06g/10.0mL/MSVOA\_W/SOIL  
 ALS Vial : 58 Sample Multiplier: 1

Instrument :  
 MSVOA\_W  
 ClientSampleId :  
 EW9L0

Integration Parameters: LSCINT.P

Integrator: RTE  
 Smoothing : OFF  
 Sampling : 1  
 Start Thrs: 0.2  
 Stop Thrs : 0

Filtering: 5  
 Min Area: 0 % of largest Peak  
 Max Peaks: 100  
 Peak Location: TOP

If leading or trailing edge < 100 prefer < Baseline drop else tangent >  
 Peak separation: 5

Method : Z:\voasrv\HPCHEM1\MSVOA\_W\Method\SFAMWLM120321SMA.M  
 Title : SFAM01.0

37	8.842	1130	1138	1148	rBB	70989	141176	55.04%	7.005%
38	9.091	1172	1179	1185	rBB6	2227	4665	1.82%	0.231%
39	9.274	1201	1209	1218	rBV	60032	120380	46.93%	5.973%
40	9.396	1228	1229	1232	rBV	102	106	0.04%	0.005%
41	9.567	1254	1257	1260	rBB	158	151	0.06%	0.007%
42	10.036	1327	1334	1342	rVB	34103	60192	23.46%	2.987%
43	10.207	1356	1362	1368	rBV3	564	1025	0.40%	0.051%
44	10.323	1374	1381	1388	rBV	118750	207750	80.99%	10.309%
45	10.390	1388	1392	1399	rVB2	1514	2953	1.15%	0.147%
46	10.579	1416	1423	1430	rBV	22025	36995	14.42%	1.836%
47	10.707	1437	1444	1450	rBV	10259	17788	6.93%	0.883%
48	10.750	1450	1451	1456	rVB2	159	159	0.06%	0.008%
49	10.859	1464	1469	1473	rBV3	1001	1457	0.57%	0.072%
50	10.927	1473	1480	1492	rVB	30259	49917	19.46%	2.477%
51	11.018	1492	1495	1497	rBB	125	126	0.05%	0.006%
52	11.061	1497	1502	1510	rBV	5476	9139	3.56%	0.453%
53	11.116	1510	1511	1515	rVB	134	161	0.06%	0.008%
54	11.177	1518	1521	1522	rVB	194	144	0.06%	0.007%
55	11.335	1544	1547	1549	rBB	118	111	0.04%	0.006%
56	11.439	1557	1564	1570	rBV2	8797	14809	5.77%	0.735%
57	11.634	1589	1596	1604	rVB	122443	212549	82.86%	10.547%
58	12.164	1680	1683	1688	rBB	181	312	0.12%	0.015%
59	12.292	1701	1704	1708	rBB	109	144	0.06%	0.007%
60	12.475	1729	1734	1737	rBB2	338	459	0.18%	0.023%
61	12.603	1749	1755	1763	rBV	25164	40643	15.84%	2.017%
62	12.695	1763	1770	1776	rVV	52545	85387	33.29%	4.237%
63	12.804	1785	1788	1791	rBB	140	164	0.06%	0.008%
64	12.853	1794	1796	1797	rBV	170	134	0.05%	0.007%
65	12.932	1805	1809	1815	rVB4	852	1344	0.52%	0.067%
66	13.079	1832	1833	1836	rVB	147	150	0.06%	0.007%
67	13.188	1846	1851	1856	rVB2	621	1000	0.39%	0.050%
68	13.243	1857	1860	1861	rBV	492	453	0.18%	0.022%
69	13.292	1864	1868	1873	rVB2	2398	4094	1.60%	0.203%
70	13.402	1882	1886	1891	rBV3	700	989	0.39%	0.049%
71	13.463	1893	1896	1897	rBV3	262	326	0.13%	0.016%
72	13.511	1900	1904	1905	rBV	137	168	0.07%	0.008%
73	13.560	1905	1912	1918	rBV	148776	246038	95.91%	12.209%
74	13.853	1953	1960	1967	rBV	129246	218122	85.03%	10.823%
75	14.066	1989	1995	2002	rBV2	7174	11526	4.49%	0.572%
76	14.188	2013	2015	2017	rBV	184	144	0.06%	0.007%

Data Path : Z:\voasrv\HPCHEM1\MSVOA\_W\Data\VW120321\  
 Data File : VW021108.D  
 Acq On : 04 Dec 2021 09:39  
 Operator : SY/VA  
 Sample : M4885-03  
 Misc : 5.06g/10.0mL/MSVOA\_W/SOIL  
 ALS Vial : 58 Sample Multiplier: 1

Instrument :  
 MSVOA\_W  
 ClientSampleId :  
 EW9L0

Integration Parameters: LSCINT.P

Integrator: RTE  
 Smoothing : OFF  
 Sampling : 1  
 Start Thrs: 0.2  
 Stop Thrs : 0

Filtering: 5  
 Min Area: 0 % of largest Peak  
 Max Peaks: 100  
 Peak Location: TOP

If leading or trailing edge < 100 prefer < Baseline drop else tangent >  
 Peak separation: 5

Method : Z:\voasrv\HPCHEM1\MSVOA\_W\Method\SFAMWLM120321SMA.M  
 Title : SFAM01.0

77	14.414	2046	2052	2053	rBV	724	1212	0.47%	0.060%
78	14.609	2082	2084	2086	rBV	203	180	0.07%	0.009%
79	14.719	2098	2102	2106	rBV3	1564	1986	0.77%	0.099%
80	14.901	2130	2132	2135	rVB	162	113	0.04%	0.006%
81	15.048	2155	2156	2161	rVB	181	230	0.09%	0.011%
82	15.097	2161	2164	2165	rBV	146	141	0.05%	0.007%
83	15.115	2165	2167	2168	rVV	205	154	0.06%	0.008%
84	15.249	2186	2189	2192	rBV	182	298	0.12%	0.015%
85	15.359	2203	2207	2214	rBV	1213	1688	0.66%	0.084%
86	15.432	2215	2219	2223	rBV2	1644	2383	0.93%	0.118%
87	15.487	2223	2228	2234	rVB	1778	3209	1.25%	0.159%
88	15.554	2234	2239	2242	rBV3	371	669	0.26%	0.033%
89	15.584	2242	2244	2247	rVB3	156	125	0.05%	0.006%
90	15.639	2247	2253	2255	rBV3	848	1710	0.67%	0.085%
91	15.895	2294	2295	2298	rBV2	129	150	0.06%	0.007%
92	15.962	2304	2306	2312	rBV2	225	338	0.13%	0.017%
93	16.066	2322	2323	2325	rBV	183	187	0.07%	0.009%
94	16.115	2329	2331	2332	rVV	170	122	0.05%	0.006%
95	16.139	2332	2335	2338	rVB2	137	201	0.08%	0.010%
96	16.212	2345	2347	2351	rBV	102	128	0.05%	0.006%
97	16.267	2355	2356	2360	rBV	119	110	0.04%	0.005%
98	16.438	2380	2384	2390	rVB3	799	1485	0.58%	0.074%
99	16.487	2390	2392	2396	rBV2	224	274	0.11%	0.014%
100	16.639	2412	2417	2423	rVB	803	1607	0.63%	0.080%

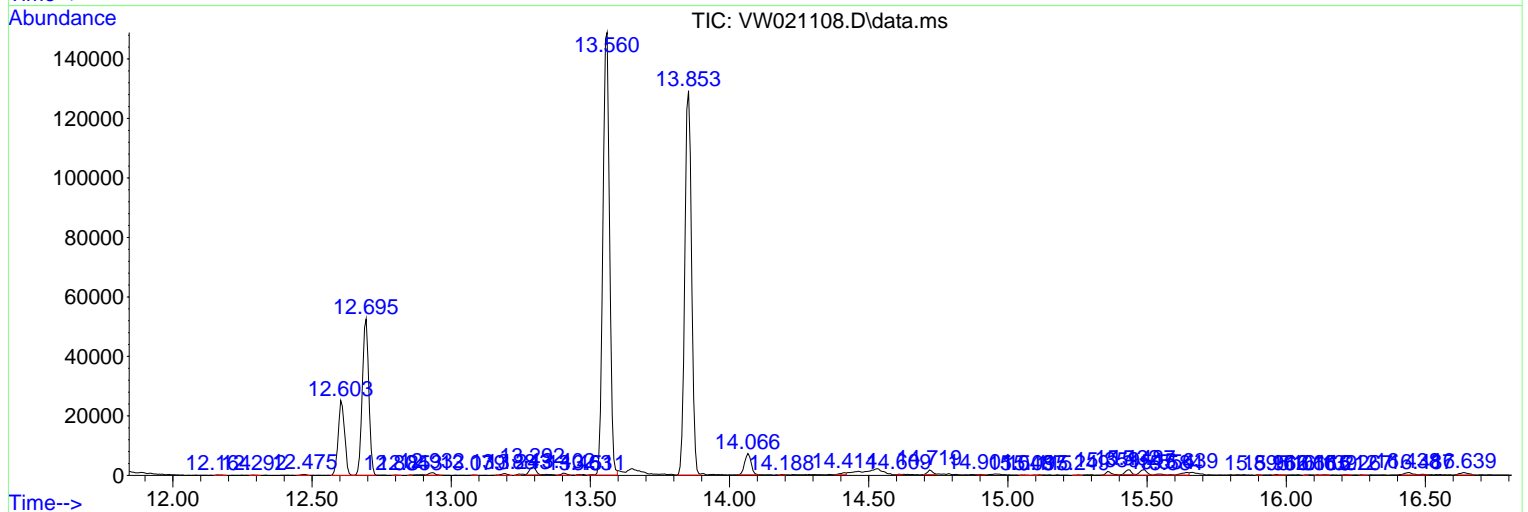
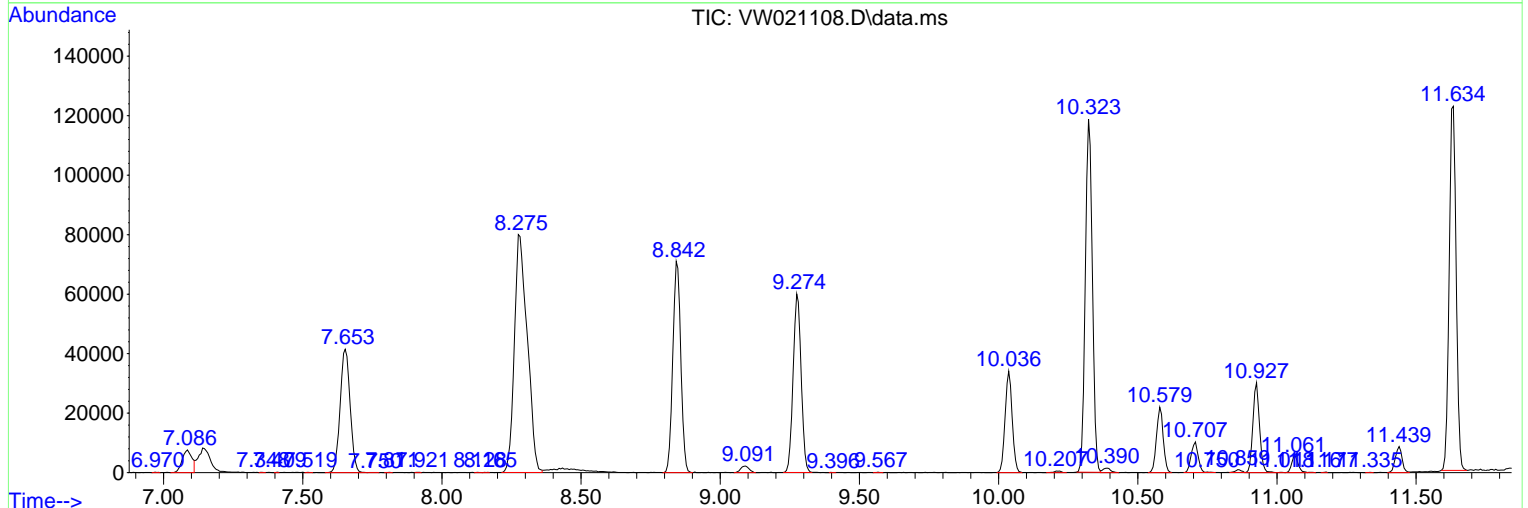
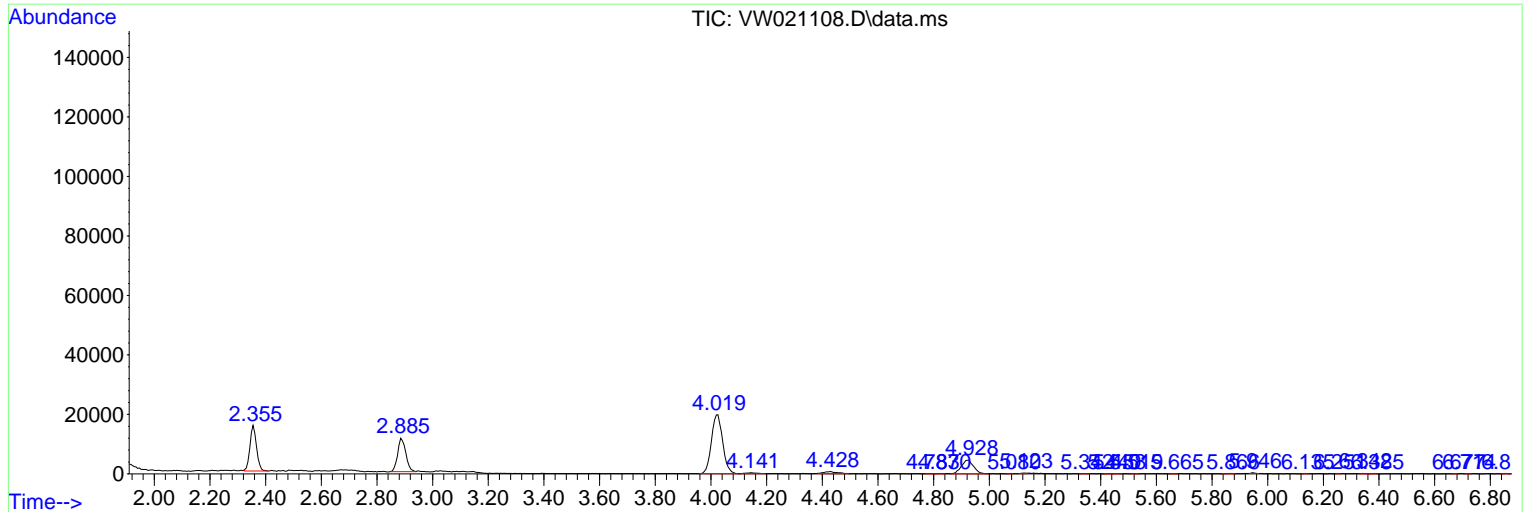
Sum of corrected areas: 2015293

Data Path : Z:\voasrv\HPCHEM1\MSVOA\_W\Data\VW120321\  
 Data File : VW021108.D  
 Acq On : 04 Dec 2021 09:39  
 Operator : SY/VA  
 Sample : M4885-03  
 Misc : 5.06g/10.0mL/MSVOA\_W/SOIL  
 ALS Vial : 58 Sample Multiplier: 1

**Instrument :**  
 MSVOA\_W  
**ClientSampleId :**  
 EW9L0

Quant Method : Z:\voasrv\HPCHEM1\MSVOA\_W\Method\SFAMWLM120321SMA.M  
 Quant Title : SFAM01.0

TIC Library : C:\Database\NIST20.L  
 TIC Integration Parameters: LSCINT.P



Library Search Compound Report

Data Path : Z:\voasrv\HPCHEM1\MSVOA\_W\Data\VW120321\  
Data File : VW021108.D  
Acq On : 04 Dec 2021 09:39  
Operator : SY/VA  
Sample : M4885-03  
Misc : 5.06g/10.0mL/MSVOA\_W/SOIL  
ALS Vial : 58 Sample Multiplier: 1

Instrument :  
MSVOA\_W  
ClientSampleId :  
EW9L0

Quant Method : Z:\voasrv\HPCHEM1\MSVOA\_W\Method\SFAMWLM120321SMA.M  
Quant Title : SFAM01.0

TIC Library : C:\Database\NIST20.L  
TIC Integration Parameters: LSCINT.P

No Library Search Compounds Detected

\*\*\*\*\*

Data Path : Z:\voasrv\HPCHEM1\MSVOA\_W\Data\VW120321\  
Data File : VW021108.D  
Acq On : 04 Dec 2021 09:39  
Operator : SY/VA  
Sample : M4885-03  
Misc : 5.06g/10.0mL/MSVOA\_W/SOIL  
ALS Vial : 58 Sample Multiplier: 1

Instrument :  
MSVOA\_W  
ClientSampleId :  
EW9L0

Quant Method : Z:\voasrv\HPCHEM1\MSVOA\_W\Method\SFAMWLM120321SMA.M  
Quant Title : SFAM01.0

TIC Library : C:\Database\NIST0.L  
TIC Integration Parameters: LSCINT.P

TIC Top Hit name	RT	EstConc	Units	Response	--Internal Standard--		
					#	RT	Resp Conc

---