

Data Path : Z:\VOASRV\HPCHEM1\MSVOA_W\DATA\VW120518\
 Data File : VW007242.D
 Acq On : 05 Dec 2018 20:02
 Operator : SY/AP
 Sample : J6204-20
 Misc : 5.23G/5ML/MSVOA_W/SOIL
 ALS Vial : 15 Sample Multiplier: 1

Instrument :
 MSVOA_W
 ClientSampleId :
 HLSP-SB-5A-(1)

Integration Parameters: RTEINT.P
 Integrator: RTE
 Smoothing : ON Filtering: 5
 Sampling : 1 Min Area: 3 % of largest Peak
 Start Thrs: 0.2 Max Peaks: 100
 Stop Thrs : 0 Peak Location: TOP

If leading or trailing edge < 100 prefer < Baseline drop else tangent >
 Peak separation: 5

Method : Z:\VOASRV\HPCHEM1\MSVOA_W\METHOD\82W120418S.M
 Title : SW846 8260

Signal : TIC

peak #	R.T. min	first scan	max scan	last scan	PK TY	peak height	corr. area	corr. % max.	% of total
1	1.965	6	10	21	rVB2	3133	6111	1.23%	0.212%
2	2.154	36	41	47	rVB2	4434	7369	1.49%	0.256%
3	4.928	481	496	518	rVB2	17041	56404	11.38%	1.956%
4	7.147	847	860	869	rBV	6911	20218	4.08%	0.701%
5	7.890	972	982	986	rBV	61455	140763	28.40%	4.881%
6	7.951	986	992	1002	rVB	152893	345519	69.71%	11.982%
7	8.311	1042	1051	1062	rVB	56475	127785	25.78%	4.431%
8	8.848	1130	1139	1149	rBV	216778	436422	88.06%	15.134%
9	10.329	1374	1382	1390	rBV	260673	466183	94.06%	16.166%
10	10.731	1438	1448	1449	rBV2	11875	27524	5.55%	0.954%
11	11.634	1588	1596	1610	rBV	298691	495618	100.00%	17.187%
12	12.621	1751	1758	1767	rBV	192341	313595	63.27%	10.875%
13	13.560	1905	1912	1920	rBV	266031	433336	87.43%	15.027%
14	14.078	1992	1997	2003	rBV	4547	6809	1.37%	0.236%

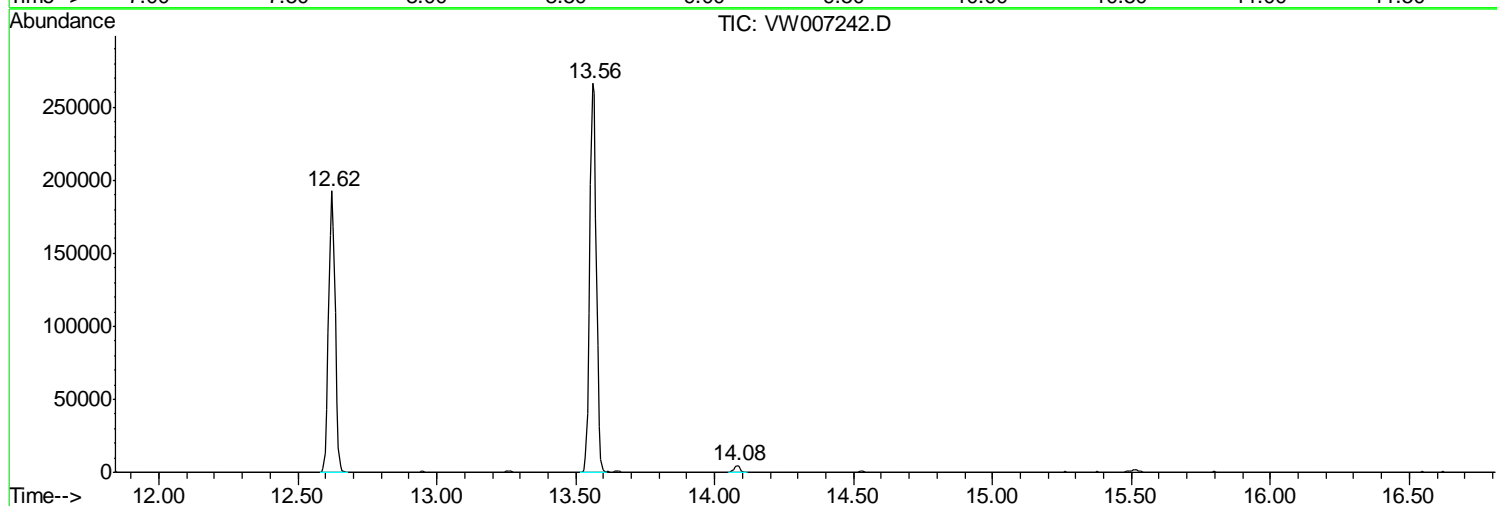
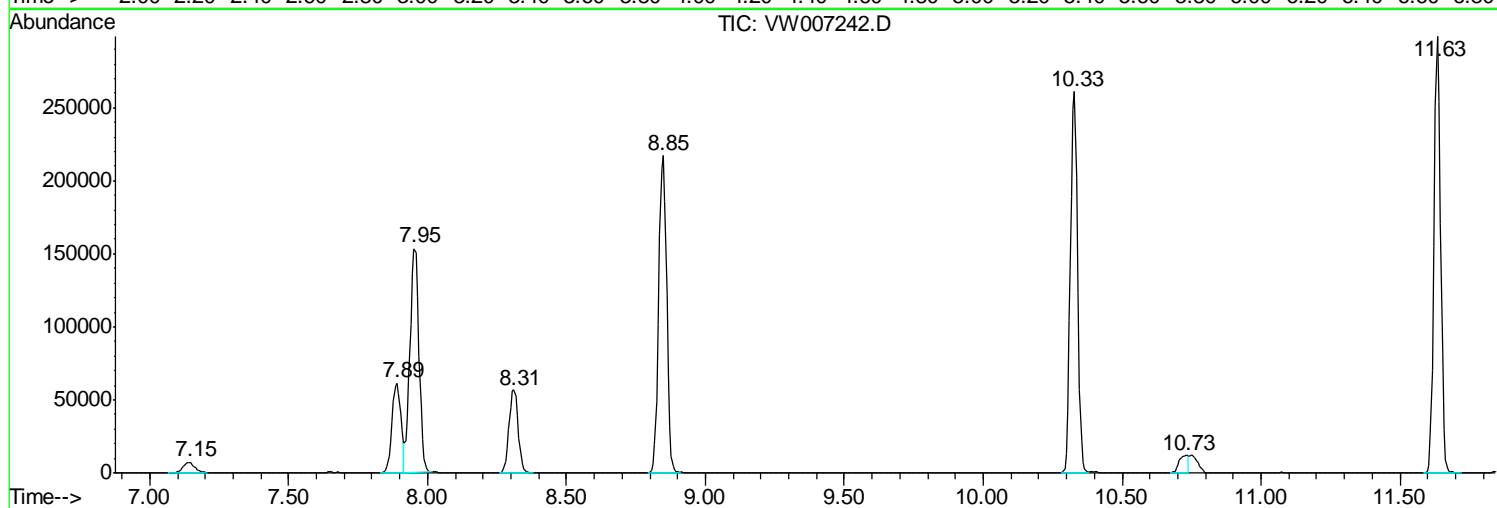
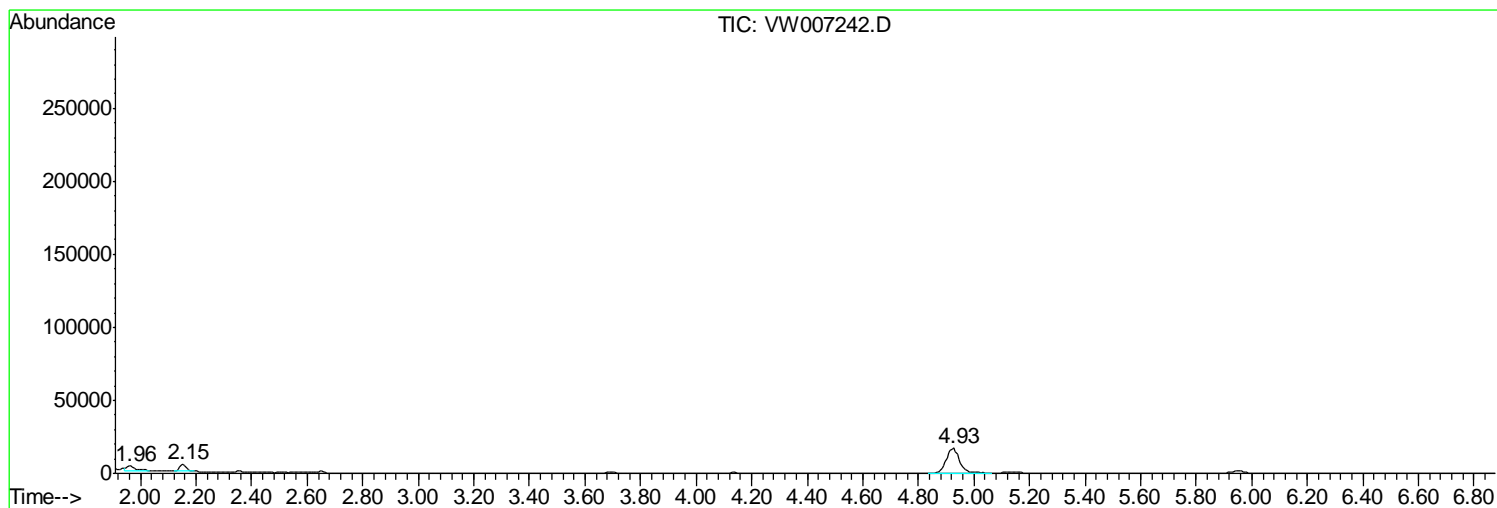
Sum of corrected areas: 2883656

Data Path : Z:\VOASRV\HPCHEM1\MSVOA_W\DATA\VW120518\
Data File : VW007242.D
Acq On : 05 Dec 2018 20:02
Operator : SY/AP
Sample : J6204-20
Misc : 5.23G/5ML/MSVOA_W/SOIL
ALS Vial : 15 Sample Multiplier: 1

Instrument :
MSVOA_W
ClientSampled :
HLSP-SB-5A-(1)

Quant Method : Z:\VOASRV\HPCHEM1\MSVOA_W\METHOD\82W120418S.M
Quant Title : SW846 8260

TIC Library : C:\DATABASE\NIST11.L
TIC Integration Parameters: LSCINT.P



Data Path : Z:\VOASRV\HPCHEM1\MSVOA_W\DATA\VW120518\
Data File : VW007242.D
Acq On : 05 Dec 2018 20:02
Operator : SY/AP
Sample : J6204-20
Misc : 5.23G/5ML/MSVOA_W/SOIL
ALS Vial : 15 Sample Multiplier: 1

Instrument :
MSVOA_W
ClientSampleId :
HLSP-SB-5A-(1)

Quant Method : Z:\VOASRV\HPCHEM1\MSVOA_W\METHOD\82W120418S.M
Quant Title : SW846 8260

TIC Library : C:\DATABASE\NIST11.L
TIC Integration Parameters: LSCINT.P

No Library Search Compounds Detected

Data Path : Z:\VOASRV\HPCHEM1\MSVOA_W\DATA\VW120518\
Data File : VW007242.D
Acq On : 05 Dec 2018 20:02
Operator : SY/AP
Sample : J6204-20
Misc : 5.23G/5ML/MSVOA_W/SOIL
ALS Vial : 15 Sample Multiplier: 1

Instrument :
MSVOA_W
ClientSampleId :
HLSP-SB-5A-(1)

Quant Method : Z:\VOASRV\HPCHEM1\MSVOA_W\METHOD\82W120418S.M
Quant Title : SW846 8260

TIC Library : C:\DATABASE\NIST11.L
TIC Integration Parameters: LSCINT.P

TIC Top Hit name	RT	EstConc	Units	Response	--Internal Standard--			
					#	RT	Resp	Conc
