

Data Path : Z:\voasrv\HPCHEM1\MSVOA_W\Data\VW120621\
 Data File : VW021189.D
 Acq On : 07 Dec 2021 00:03
 Operator : SY/VA
 Sample : M4888-10
 Misc : 5.01g/10.0mL/MSVOA_W/SOIL
 ALS Vial : 36 Sample Multiplier: 1

Instrument :
 MSVOA_W
ClientSampleId :
 EX8B5

Manual Integrations
APPROVED
 Reviewed By :Mahesh Dadoda 12/07/2021
 Supervised By :Semsettin Yesilyurt 12/19/2021

Quant Time: Dec 07 07:51:22 2021
 Quant Method : Z:\voasrv\HPCHEM1\MSVOA_W\Method\SFAMWLM120321SMA.M
 Quant Title : SFAM01.0
 QLast Update : Tue Dec 07 07:23:32 2021
 Response via : Initial Calibration

Compound	R.T.	QIon	Response	Conc	Units	Dev(Min)
Internal Standards						
1) 1,4-Difluorobenzene	8.841	114	25853	25.000	ug/L	# 0.00
28) Chlorobenzene-d5	11.628	117	13747	25.000	ug/L	0.00
58) 1,4-Dichlorobenzene-d4	13.554	152	2595	25.000	ug/L	0.00
System Monitoring Compounds						
4) Vinyl Chloride-d3	2.349	65	13595	37.743	ug/L	0.00
Spiked Amount	25.000	Range 30 - 150	Recovery	=	150.960%#	
7) Chloroethane-d5	2.885	69	9076	37.640	ug/L	0.00
Spiked Amount	25.000	Range 30 - 150	Recovery	=	150.560%#	
11) 1,1-Dichloroethene-d2	4.019	63	13631	23.688	ug/L	0.00
Spiked Amount	25.000	Range 45 - 110	Recovery	=	94.760%	
21) 2-Butanone-d5	7.080	46	4819	58.654	ug/L	0.00
Spiked Amount	50.000	Range 20 - 135	Recovery	=	117.300%	
24) Chloroform-d	7.653	84	18969	29.298	ug/L	0.00
Spiked Amount	25.000	Range 40 - 150	Recovery	=	117.200%	
26) 1,2-Dichloroethane-d4	8.305	65	9868	27.860	ug/L	0.00
Spiked Amount	25.000	Range 70 - 130	Recovery	=	111.440%	
32) Benzene-d6	8.275	84	34639	49.280	ug/L	0.00
Spiked Amount	25.000	Range 20 - 135	Recovery	=	197.120%#	
36) 1,2-Dichloropropane-d6	9.274	67	10332	52.894	ug/L	0.00
Spiked Amount	25.000	Range 70 - 120	Recovery	=	211.560%#	
41) Toluene-d8	10.323	98	24243	33.637	ug/L	0.00
Spiked Amount	25.000	Range 30 - 130	Recovery	=	134.560%#	
43) trans-1,3-Dichloroprop...	10.579	79	1826	20.587	ug/L	0.00
Spiked Amount	25.000	Range 30 - 135	Recovery	=	82.360%	
47) 2-Hexanone-d5	10.926	63	3192	85.411	ug/L	0.00
Spiked Amount	50.000	Range 20 - 135	Recovery	=	170.820%#	
56) 1,1,2,2-Tetrachloroeth...	12.688	84	6696	37.054	ug/L	0.00
Spiked Amount	25.000	Range 45 - 120	Recovery	=	148.200%#	
66) 1,2-Dichlorobenzene-d4	13.853	152	2559	27.522	ug/L	0.00
Spiked Amount	25.000	Range 75 - 120	Recovery	=	110.080%	
Target Compounds						
13) Acetone	4.129	43	564m	7.536	ug/L	
16) Methylene chloride	4.915	84	2431m	5.968	ug/L	
27) 1,2-Dichloroethane	8.409	62	1232	2.961	ug/L	# 77
42) Toluene	10.390	91	1917	2.147	ug/L	85
46) Tetrachloroethene	10.859	164	1068	5.408	ug/L	90
52) Ethylbenzene	11.731	91	629	0.626	ug/L	83
53) m,p-Xylene	11.835	106	933	2.244	ug/L	95
54) o-Xylene	12.164	106	253	0.645	ug/L	80

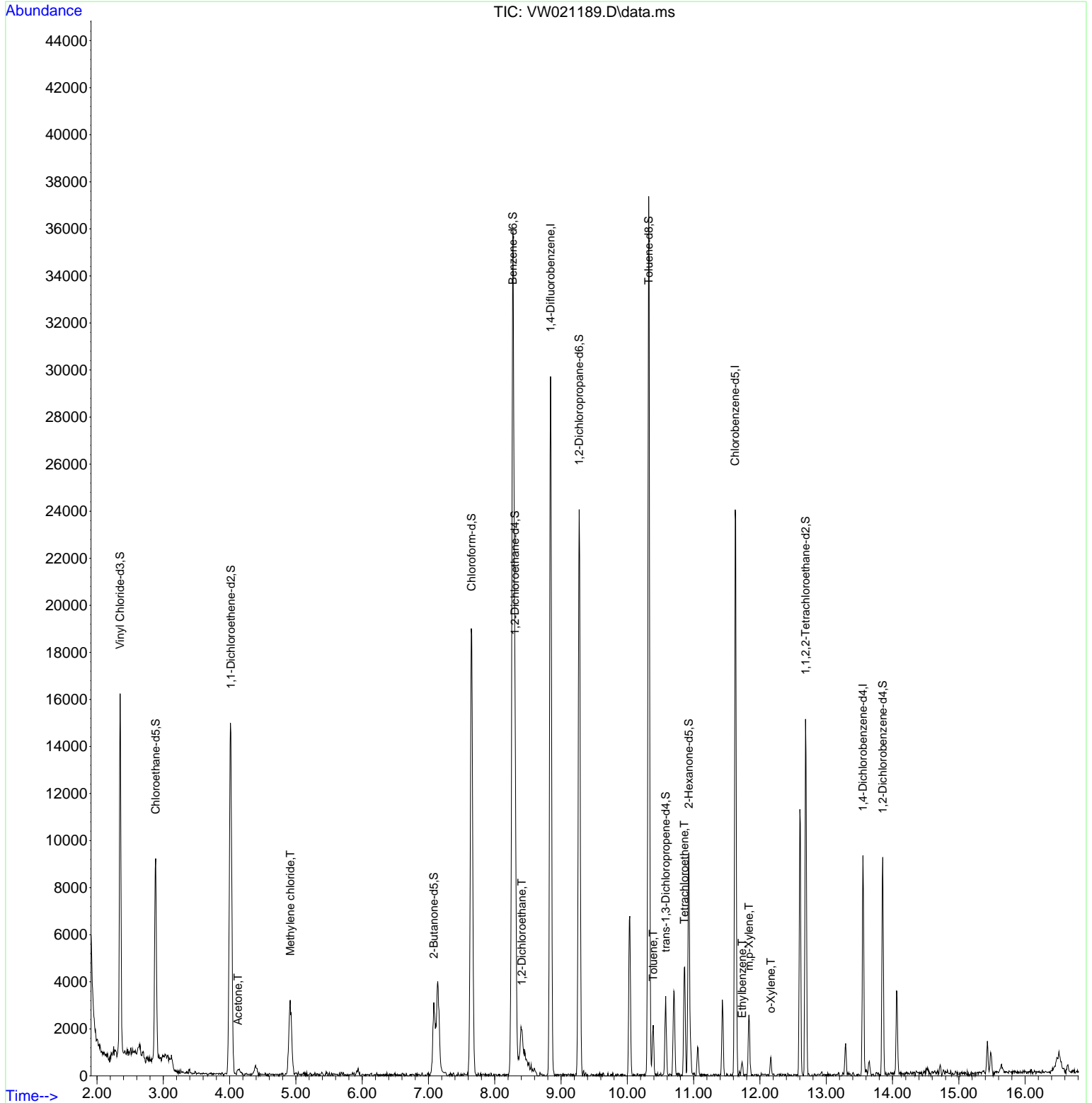
(#) = qualifier out of range (m) = manual integration (+) = signals summed

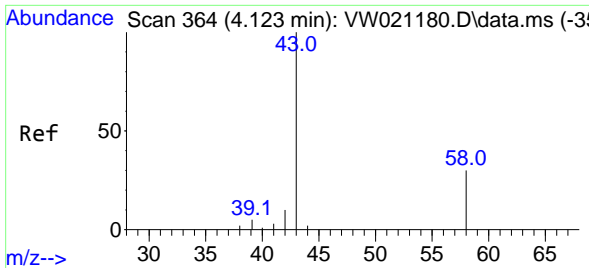
Data Path : Z:\voasrv\HPCHEM1\MSVOA_W\Data\VW120621\
 Data File : VW021189.D
 Acq On : 07 Dec 2021 00:03
 Operator : SY/VA
 Sample : M4888-10
 Misc : 5.01g/10.0mL/MSVOA_W/SOIL
 ALS Vial : 36 Sample Multiplier: 1

Instrument :
 MSVOA_W
ClientSampleId :
 EX8B5

Quant Time: Dec 07 07:51:22 2021
 Quant Method : Z:\voasrv\HPCHEM1\MSVOA_W\Method\SFAMWLM120321SMA.M
 Quant Title : SFAM01.0
 QLast Update : Tue Dec 07 07:23:32 2021
 Response via : Initial Calibration

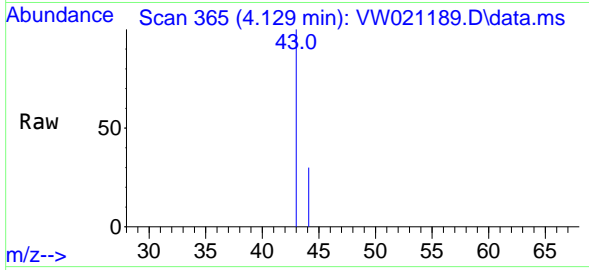
Manual Integrations
APPROVED
 Reviewed By :Mahesh Dadoda 12/07/2021
 Supervised By :Semsettin Yesilyurt 12/19/2021





#13
 Acetone
 Concen: 7.536 ug/L m
 RT: 4.129 min Scan# 364
 Delta R.T. 0.006 min
 Lab File: VW021189.D
 Acq: 07 Dec 2021 00:03

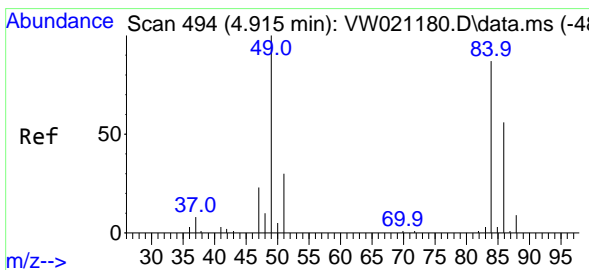
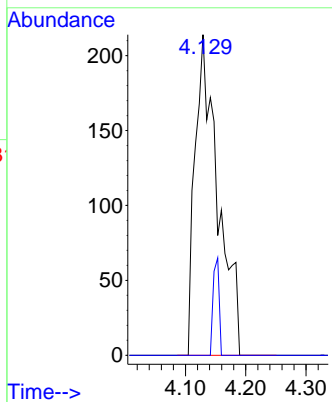
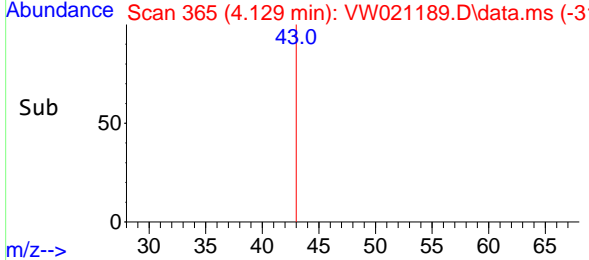
Instrument : MSVOA_W
 ClientSampleId : EX8B5



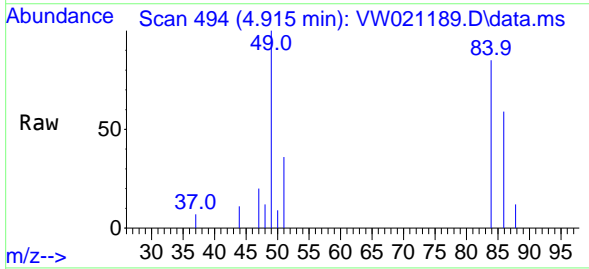
Tgt Ion: 43 Resp: 564
 Ion Ratio Lower Upper
 43 100
 58 7.8 0.0 52.8

Manual Integrations
APPROVED

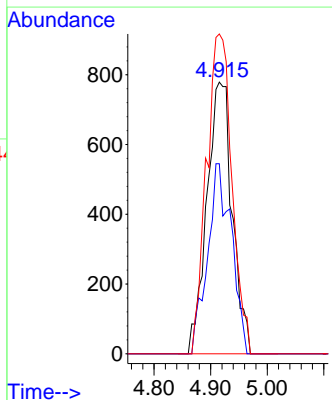
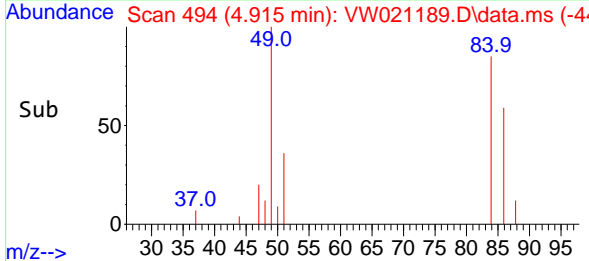
Reviewed By :Mahesh Dadoda 12/07/2021
 Supervised By :Semsettin Yesilyurt 12/19/2021

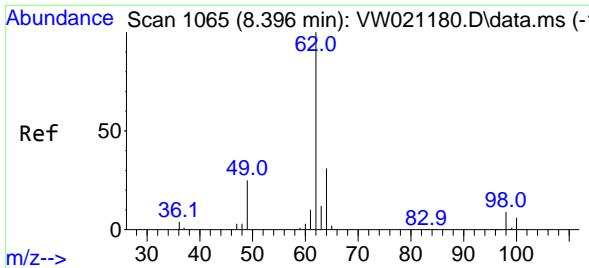


#16
 Methylene chloride
 Concen: 5.968 ug/L m
 RT: 4.915 min Scan# 494
 Delta R.T. -0.000 min
 Lab File: VW021189.D
 Acq: 07 Dec 2021 00:03



Tgt Ion: 84 Resp: 2431
 Ion Ratio Lower Upper
 84 100
 86 70.0 45.5 84.5
 49 117.7 100.5 186.7





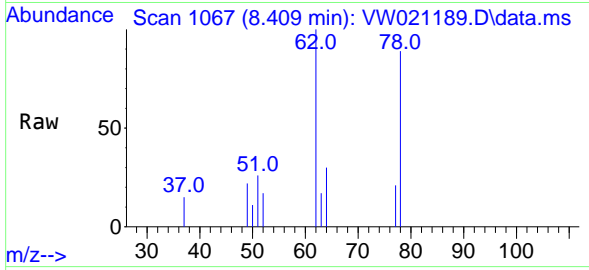
#27
 1,2-Dichloroethane
 Concen: 2.961 ug/L
 RT: 8.409 min Scan# 1065
 Delta R.T. 0.012 min
 Lab File: VW021189.D
 Acq: 07 Dec 2021 00:03

Instrument :

MSVOA_W

ClientSampled :

EX8B5

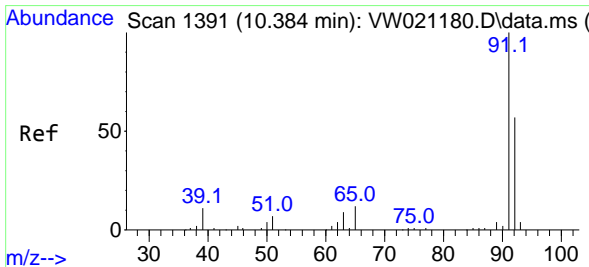
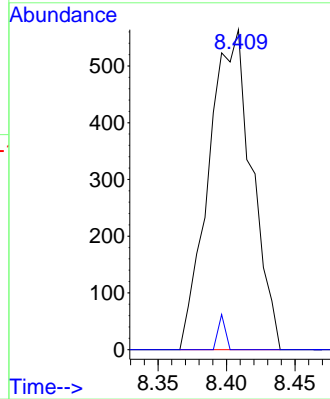
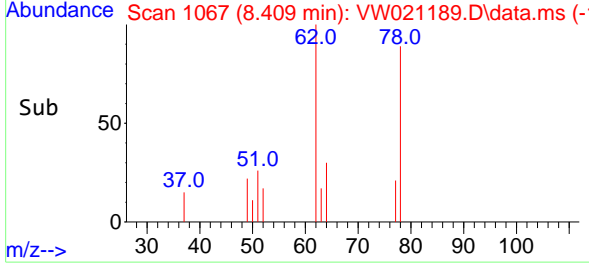


Tgt Ion: 62 Resp: 123
 Ion Ratio Lower Upper
 62 100
 98 0.0 6.5 9.7

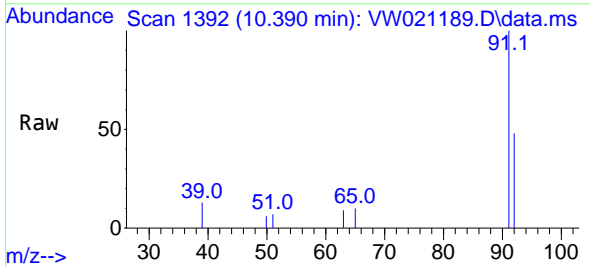
Manual Integrations

APPROVED

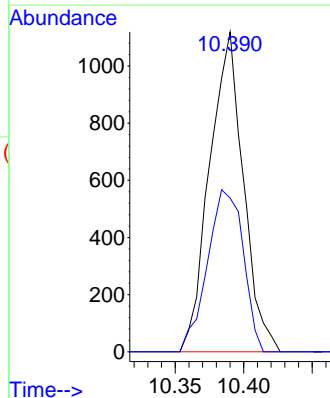
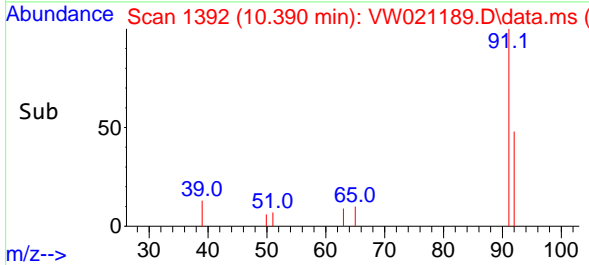
Reviewed By :Mahesh Dadoda 12/07/2021
 Supervised By :Semsettin Yesilyurt 12/19/2021

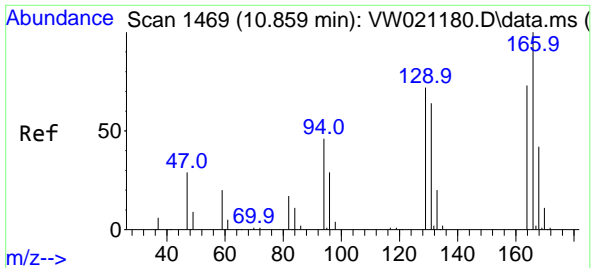


#42
 Toluene
 Concen: 2.147 ug/L
 RT: 10.390 min Scan# 1392
 Delta R.T. 0.006 min
 Lab File: VW021189.D
 Acq: 07 Dec 2021 00:03



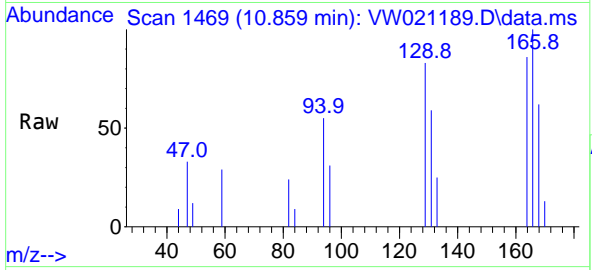
Tgt Ion: 91 Resp: 1917
 Ion Ratio Lower Upper
 91 100
 92 48.1 41.7 77.5





#46
 Tetrachloroethene
 Concen: 5.408 ug/L
 RT: 10.859 min Scan# 1469
 Delta R.T. -0.000 min
 Lab File: VW021189.D
 Acq: 07 Dec 2021 00:03

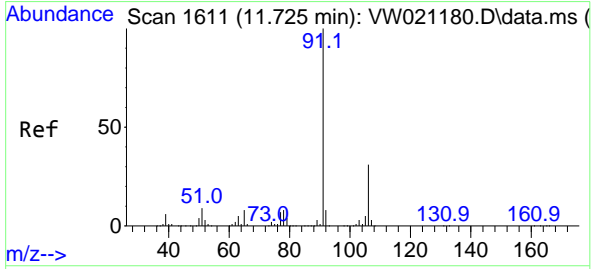
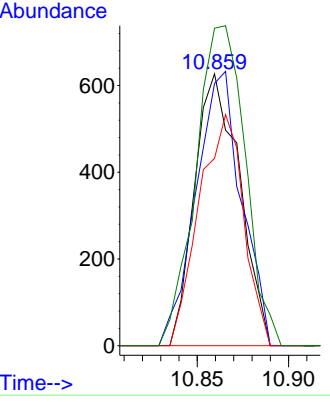
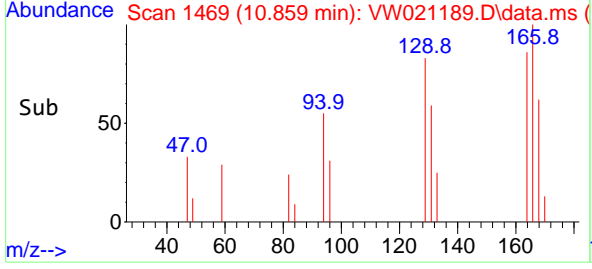
Instrument : MSVOA_W
 ClientSampled : EX8B5



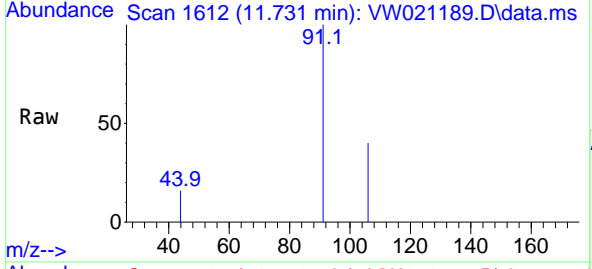
Tgt Ion:164 Resp: 1068

Ion	Ratio	Lower	Upper
164	100		
129	96.5	65.5	121.7
131	68.9	59.7	110.9
166	116.7	88.7	164.7

Manual Integrations
APPROVED
 Reviewed By :Mahesh Dadoda 12/07/2021
 Supervised By :Semsettin Yesilyurt 12/19/2021

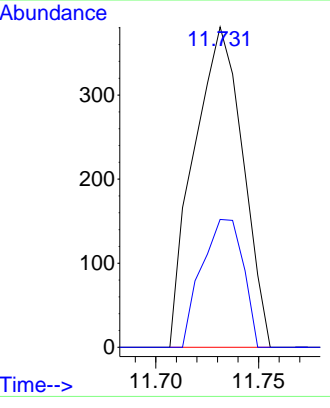
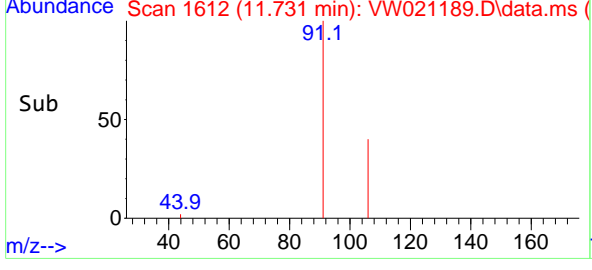


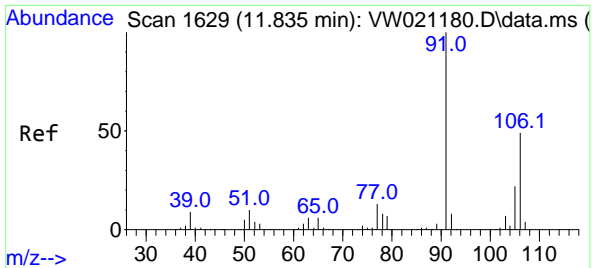
#52
 Ethylbenzene
 Concen: 0.626 ug/L
 RT: 11.731 min Scan# 1612
 Delta R.T. 0.006 min
 Lab File: VW021189.D
 Acq: 07 Dec 2021 00:03



Tgt Ion: 91 Resp: 629

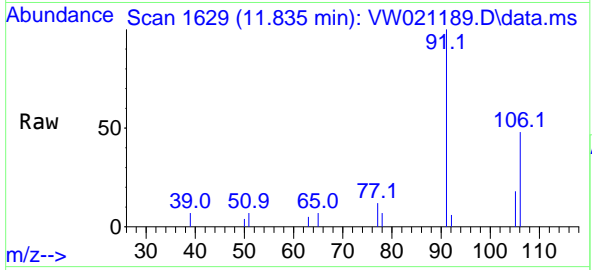
Ion	Ratio	Lower	Upper
91	100		
106	39.9	21.5	39.9





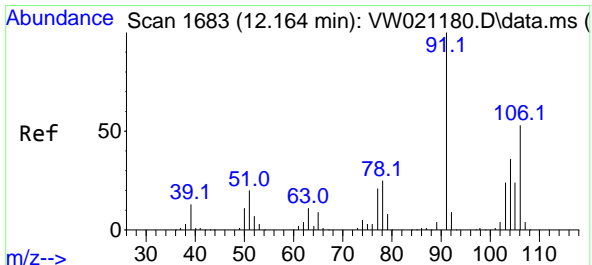
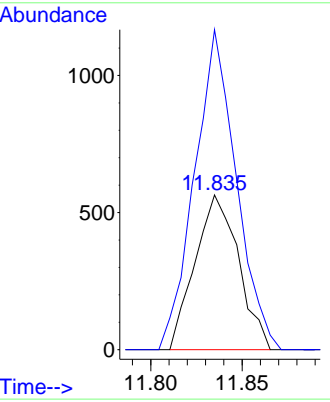
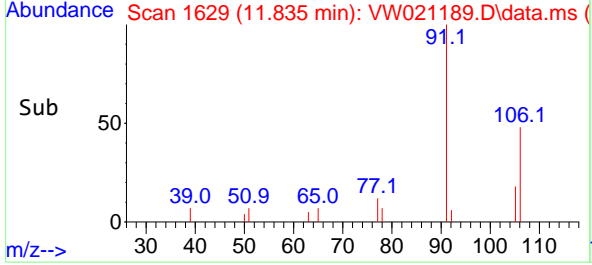
#53
 m,p-Xylene
 Concen: 2.244 ug/L
 RT: 11.835 min Scan# 1629
 Delta R.T. -0.000 min
 Lab File: VW021189.D
 Acq: 07 Dec 2021 00:03

Instrument : MSVOA_W
 Client Sample Id : EX8B5

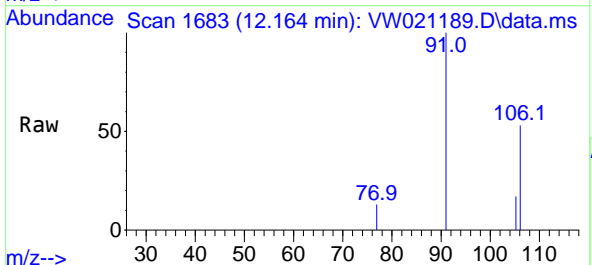


Tgt Ion:106 Resp: 93
 Ion Ratio Lower Upper
 106 100
 91 206.9 149.9 278.3

Manual Integrations
APPROVED
 Reviewed By :Mahesh Dadoda 12/07/2021
 Supervised By :Semsettin Yesilyurt 12/19/2021



#54
 o-Xylene
 Concen: 0.645 ug/L
 RT: 12.164 min Scan# 1683
 Delta R.T. -0.000 min
 Lab File: VW021189.D
 Acq: 07 Dec 2021 00:03



Tgt Ion:106 Resp: 253
 Ion Ratio Lower Upper
 106 100
 91 187.0 153.6 285.3

