

Data Path : Z:\voasrv\HPCHEM1\MSVOA_W\Data\VW120621\
 Data File : VW021183.D
 Acq On : 06 Dec 2021 21:38
 Operator : SY/VA
 Sample : M4888-11
 Misc : 6.33g/10.0mL/MSVOA_W/SOIL
 ALS Vial : 30 Sample Multiplier: 1

Instrument :
 MSVOA_W
 ClientSampleId :
 EX8B6

Integration Parameters: LSCINT.P

Integrator: RTE
 Smoothing : OFF
 Sampling : 1
 Start Thrs: 0.2
 Stop Thrs : 0

Filtering: 5
 Min Area: 0 % of largest Peak
 Max Peaks: 100
 Peak Location: TOP

If leading or trailing edge < 100 prefer < Baseline drop else tangent >
 Peak separation: 5

Method : Z:\voasrv\HPCHEM1\MSVOA_W\Method\SFAMWLM120321SMA.M
 Title : SFAM01.0

Signal : TIC: VW021183.D\data.ms

peak #	R.T. min	first scan	max scan	last scan	PK TY	peak height	corr. area	corr. % max.	% of total
1	2.349	68	73	80	rVB	42282	68479	11.03%	1.390%
2	2.879	154	160	171	rVB	20974	45306	7.30%	0.920%
3	3.367	238	240	241	rBV	141	116	0.02%	0.002%
4	3.379	241	242	246	rVB2	300	313	0.05%	0.006%
5	3.611	278	280	281	rBV	130	125	0.02%	0.003%
6	3.915	326	330	334	rBV	122	254	0.04%	0.005%
7	4.019	336	347	360	rBV2	38788	118417	19.08%	2.403%
8	4.190	372	375	376	rBV	108	120	0.02%	0.002%
9	4.245	380	384	386	rBV	262	368	0.06%	0.007%
10	4.397	399	409	420	rVV3	783	2550	0.41%	0.052%
11	4.507	425	427	430	rBV	100	151	0.02%	0.003%
12	4.635	447	448	452	rBB	96	107	0.02%	0.002%
13	4.678	452	455	458	rBB	75	121	0.02%	0.002%
14	4.915	484	494	507	rVB2	5303	18282	2.95%	0.371%
15	5.123	523	528	529	rBV2	348	499	0.08%	0.010%
16	5.141	529	531	535	rVV2	270	359	0.06%	0.007%
17	5.171	535	536	539	rVB	165	115	0.02%	0.002%
18	5.214	540	543	545	rBB	86	94	0.02%	0.002%
19	5.257	547	550	552	rBV	115	135	0.02%	0.003%
20	5.281	552	554	556	rVB	133	125	0.02%	0.003%
21	5.348	560	565	567	rBV	162	285	0.05%	0.006%
22	5.427	577	578	580	rVV	126	90	0.01%	0.002%
23	5.476	584	586	588	rBB	111	108	0.02%	0.002%
24	5.586	602	604	606	rVB	145	117	0.02%	0.002%
25	5.629	607	611	614	rBB	132	180	0.03%	0.004%
26	5.683	615	620	621	rBB	152	130	0.02%	0.003%
27	5.720	622	626	627	rBV	126	113	0.02%	0.002%
28	5.799	638	639	642	rBV	153	145	0.02%	0.003%
29	6.068	680	683	684	rBB	98	92	0.01%	0.002%
30	6.098	687	688	691	rBB	106	90	0.01%	0.002%
31	6.214	704	707	708	rBV	118	111	0.02%	0.002%
32	6.257	713	714	717	rBV	126	130	0.02%	0.003%
33	6.281	717	718	720	rVB	137	99	0.02%	0.002%
34	6.336	725	727	730	rBB	123	105	0.02%	0.002%
35	6.446	742	745	748	rBB	90	124	0.02%	0.003%
36	6.549	760	762	765	rBB	138	117	0.02%	0.002%

Data Path : Z:\voasrv\HPCHEM1\MSVOA_W\Data\VW120621\
 Data File : VW021183.D
 Acq On : 06 Dec 2021 21:38
 Operator : SY/VA
 Sample : M4888-11
 Misc : 6.33g/10.0mL/MSVOA_W/SOIL
 ALS Vial : 30 Sample Multiplier: 1

Instrument :
 MSVOA_W
 ClientSampleId :
 EX8B6

Integration Parameters: LSCINT.P

Integrator: RTE
 Smoothing : OFF Filtering: 5
 Sampling : 1 Min Area: 0 % of largest Peak
 Start Thrs: 0.2 Max Peaks: 100
 Stop Thrs : 0 Peak Location: TOP

If leading or trailing edge < 100 prefer < Baseline drop else tangent >
 Peak separation: 5

Method : Z:\voasrv\HPCHEM1\MSVOA_W\Method\SFAMWLM120321SMA.M
 Title : SFAM01.0

37	6.586	765	768	769	rBB	122	106	0.02%	0.002%
38	6.695	783	786	788	rBB	96	108	0.02%	0.002%
39	6.732	791	792	794	rBV	133	98	0.02%	0.002%
40	6.939	821	826	829	rBB	127	164	0.03%	0.003%
41	6.988	829	834	840	rBV2	396	760	0.12%	0.015%
42	7.080	840	849	855	rBV	9850	27511	4.43%	0.558%
43	7.281	880	882	883	rBV	157	141	0.02%	0.003%
44	7.330	888	890	892	rBV	93	109	0.02%	0.002%
45	7.567	926	929	932	rBV	78	145	0.02%	0.003%
46	7.647	932	942	953	rVV	61505	149936	24.16%	3.043%
47	7.756	957	960	962	rBB	143	142	0.02%	0.003%
48	7.848	972	975	978	rBB2	159	206	0.03%	0.004%
49	7.915	984	986	987	rBV2	119	103	0.02%	0.002%
50	7.951	988	992	997	rVB3	510	969	0.16%	0.020%
51	8.274	1032	1045	1060	rBV2	117700	353660	56.99%	7.178%
52	8.732	1116	1120	1121	rBB	118	90	0.01%	0.002%
53	8.762	1123	1125	1129	rBV	148	185	0.03%	0.004%
54	8.841	1129	1138	1148	rBV	102121	201047	32.40%	4.080%
55	8.915	1148	1150	1152	rVB	146	105	0.02%	0.002%
56	8.957	1155	1157	1159	rVB	118	93	0.01%	0.002%
57	9.091	1173	1179	1186	rVB3	6518	12998	2.09%	0.264%
58	9.213	1196	1199	1201	rBV	198	203	0.03%	0.004%
59	9.274	1201	1209	1216	rBV	79548	158961	25.62%	3.226%
60	9.414	1231	1232	1235	rVB	138	99	0.02%	0.002%
61	9.494	1242	1245	1247	rBV	107	138	0.02%	0.003%
62	10.036	1326	1334	1343	rVB	39070	70023	11.28%	1.421%
63	10.207	1360	1362	1366	rBB	355	428	0.07%	0.009%
64	10.268	1369	1372	1373	rBV	83	91	0.01%	0.002%
65	10.323	1373	1381	1388	rVV	159508	275572	44.41%	5.593%
66	10.384	1388	1391	1399	rVB	4506	7658	1.23%	0.155%
67	10.579	1416	1423	1430	rVB	22431	38713	6.24%	0.786%
68	10.701	1435	1443	1452	rBV	6517	11514	1.86%	0.234%
69	10.780	1455	1456	1460	rVB2	123	126	0.02%	0.003%
70	10.859	1463	1469	1474	rBV	10918	19177	3.09%	0.389%
71	10.920	1474	1479	1492	rVB	38805	66545	10.72%	1.351%
72	11.006	1492	1493	1494	rBV	288	139	0.02%	0.003%
73	11.061	1497	1502	1508	rBV	3869	6334	1.02%	0.129%
74	11.170	1518	1520	1522	rBV2	289	308	0.05%	0.006%
75	11.286	1524	1539	1540	rBV	4607	11379	1.83%	0.231%
76	11.628	1589	1595	1606	rVB	134818	222244	35.81%	4.511%

Data Path : Z:\voasrv\HPCHEM1\MSVOA_W\Data\VW120621\
 Data File : VW021183.D
 Acq On : 06 Dec 2021 21:38
 Operator : SY/VA
 Sample : M4888-11
 Misc : 6.33g/10.0mL/MSVOA_W/SOIL
 ALS Vial : 30 Sample Multiplier: 1

Instrument :
 MSVOA_W
 ClientSampleId :
 EX8B6

Integration Parameters: LSCINT.P
 Integrator: RTE
 Smoothing : OFF Filtering: 5
 Sampling : 1 Min Area: 0 % of largest Peak
 Start Thrs: 0.2 Max Peaks: 100
 Stop Thrs : 0 Peak Location: TOP

If leading or trailing edge < 100 prefer < Baseline drop else tangent >
 Peak separation: 5

Method : Z:\voasrv\HPCHEM1\MSVOA_W\Method\SFAMWLM120321SMA.M
 Title : SFAM01.0

77	11.719	1608	1610	1617	rVB4	632	922	0.15%	0.019%
78	11.835	1623	1629	1633	rBV	2517	4311	0.69%	0.087%
79	11.938	1645	1646	1649	rBV	174	166	0.03%	0.003%
80	12.085	1668	1670	1673	rBV	77	113	0.02%	0.002%
81	12.164	1678	1683	1690	rBV2	1516	2752	0.44%	0.056%
82	12.243	1690	1696	1697	rBV3	714	1197	0.19%	0.024%
83	12.603	1750	1755	1762	rVB2	25327	41860	6.75%	0.850%
84	12.688	1762	1769	1776	rBV	60290	99853	16.09%	2.027%
85	12.871	1776	1799	1830	rVV3	96148	619622	99.85%	12.576%
86	13.139	1839	1843	1844	rBV	817	1008	0.16%	0.020%
87	13.310	1858	1871	1884	rBV3	133827	620566	100.00%	12.595%
88	13.554	1905	1911	1918	rBV	106279	161709	26.06%	3.282%
89	13.847	1951	1959	1968	rBV	115301	246934	39.79%	5.012%
90	14.066	1990	1995	2005	rVB2	10616	19275	3.11%	0.391%
91	14.292	2023	2032	2045	rVB2	29908	100944	16.27%	2.049%
92	14.523	2053	2070	2084	rBV3	105678	359900	58.00%	7.305%
93	14.755	2098	2108	2118	rVB5	10462	35166	5.67%	0.714%
94	14.944	2118	2139	2150	rBV	62454	195459	31.50%	3.967%
95	15.633	2240	2252	2270	rVB2	105187	399634	64.40%	8.111%
96	15.932	2292	2301	2317	rVB4	12670	52087	8.39%	1.057%
97	16.115	2322	2331	2349	rVB4	10550	36825	5.93%	0.747%
98	16.352	2359	2370	2373	rBV6	3165	8431	1.36%	0.171%
99	16.639	2410	2417	2425	rVB	10216	21567	3.48%	0.438%
100	16.730	2430	2432	2434	rBV2	313	355	0.06%	0.007%

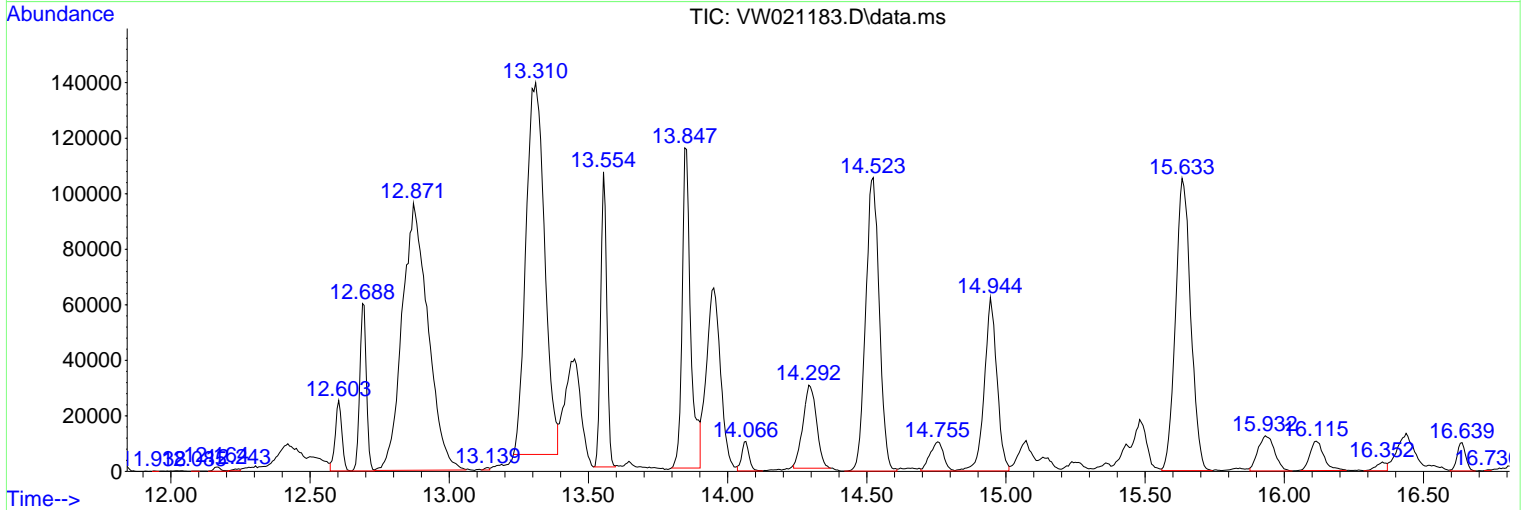
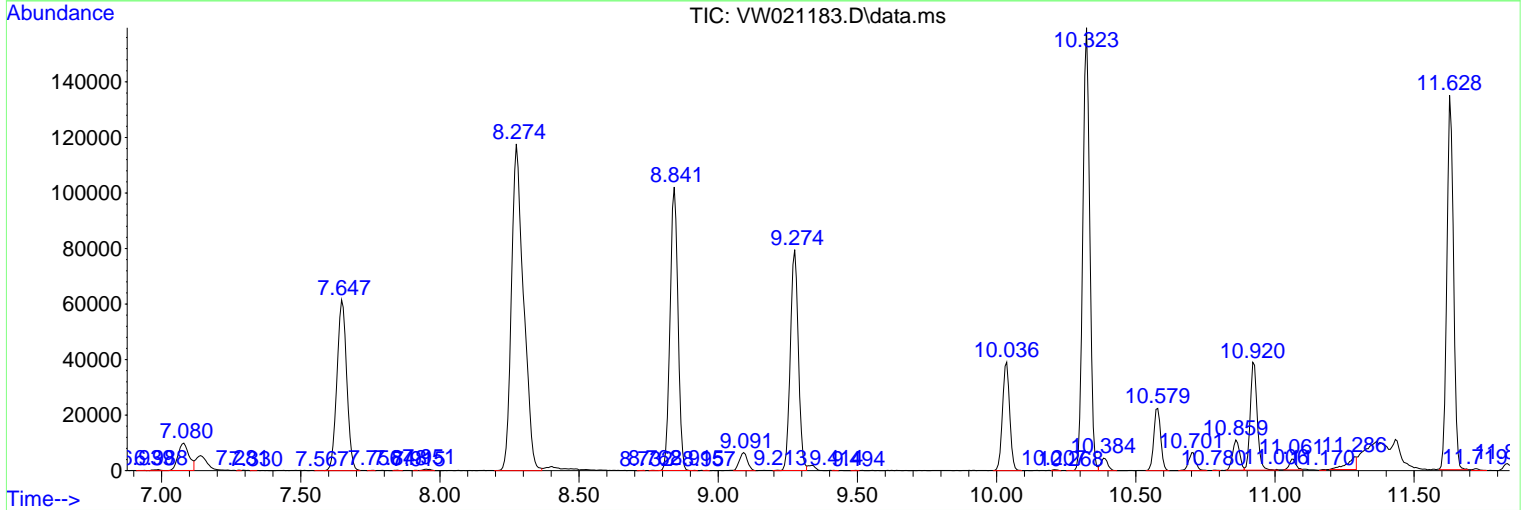
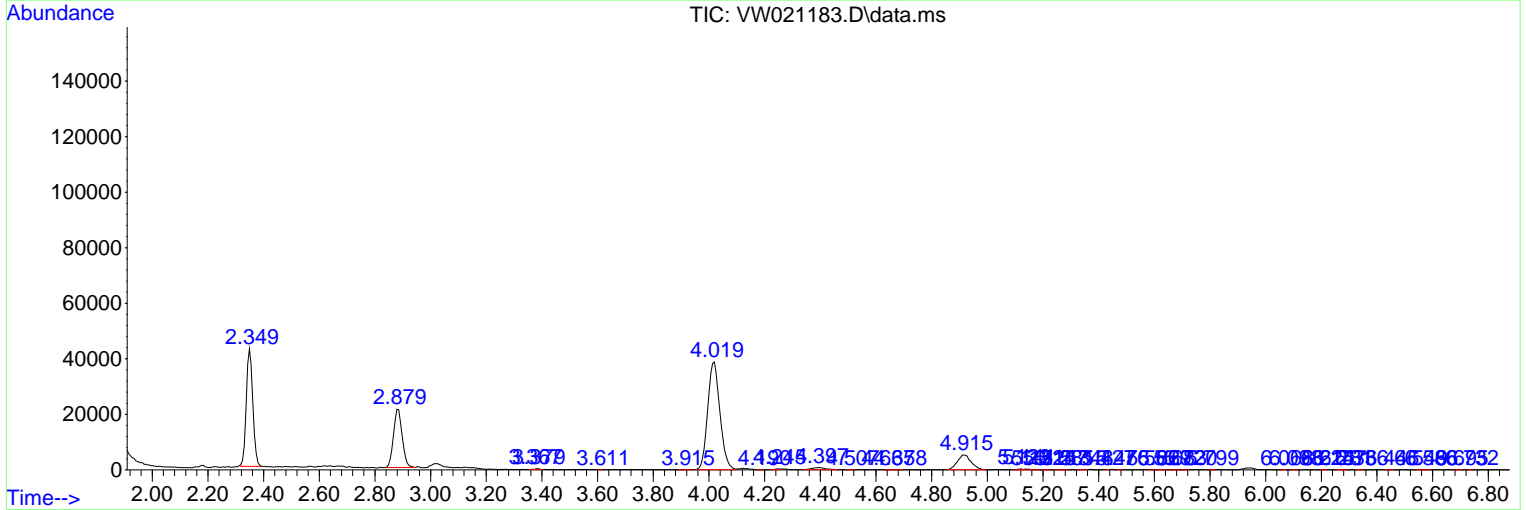
Sum of corrected areas: 4927056

Data Path : Z:\voasrv\HPCHEM1\MSVOA_W\Data\VW120621\
 Data File : VW021183.D
 Acq On : 06 Dec 2021 21:38
 Operator : SY/VA
 Sample : M4888-11
 Misc : 6.33g/10.0mL/MSVOA_W/SOIL
 ALS Vial : 30 Sample Multiplier: 1

Instrument :
 MSVOA_W
 ClientSampleId :
 EX8B6

Quant Method : Z:\voasrv\HPCHEM1\MSVOA_W\Method\SFAMWLM120321SMA.M
 Quant Title : SFAM01.0

TIC Library : C:\Database\NIST20.L
 TIC Integration Parameters: LSCINT.P



Data Path : Z:\voasrv\HPCHEM1\MSVOA_W\Data\VW120621\
 Data File : VW021183.D
 Acq On : 06 Dec 2021 21:38
 Operator : SY/VA
 Sample : M4888-11
 Misc : 6.33g/10.0mL/MSVOA_W/SOIL
 ALS Vial : 30 Sample Multiplier: 1

Instrument :
 MSVOA_W
 ClientSampleId :
 EX8B6

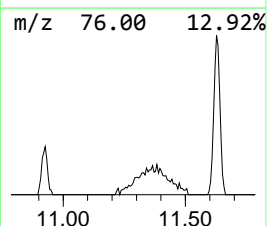
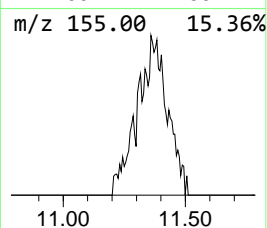
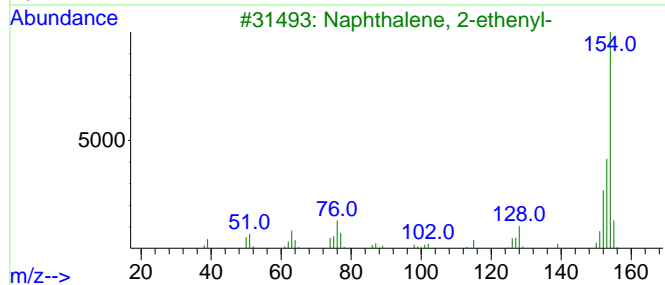
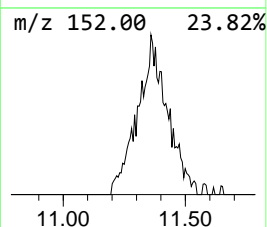
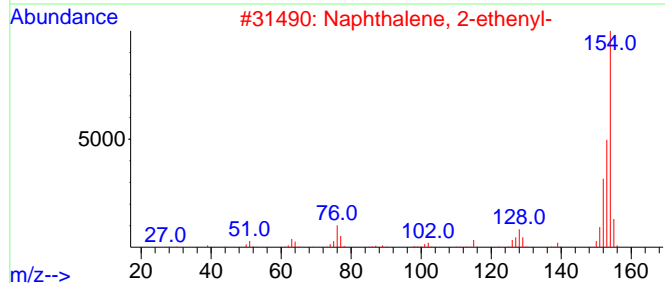
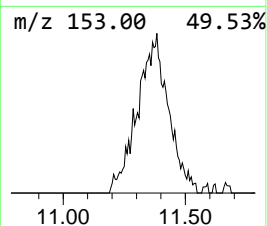
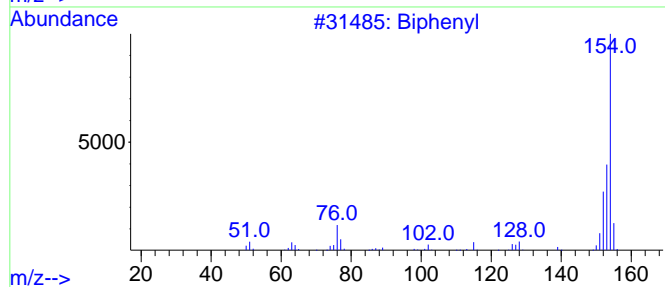
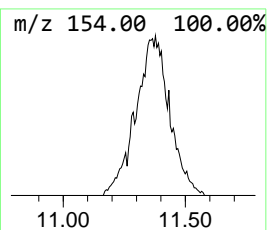
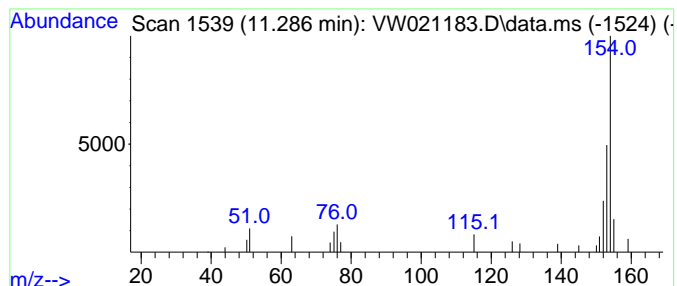
Quant Method : Z:\voasrv\HPCHEM1\MSVOA_W\Method\SFAMWLM120321SMA.M
 Quant Title : SFAM01.0

TIC Library : C:\Database\NIST20.L
 TIC Integration Parameters: LSCINT.P

 Peak Number 4 Biphenyl Concentration Rank 17

R.T.	EstConc	Area	Relative to ISTD	R.T.
11.286	1.28 ug/L	11379	Chlorobenzene-d5	11.628

Hit# of 5	Tentative ID	MW	MolForm	CAS#	Qual
1	Biphenyl	154	C12H10	000092-52-4	83
2	Naphthalene, 2-ethenyl-	154	C12H10	000827-54-3	72
3	Naphthalene, 2-ethenyl-	154	C12H10	000827-54-3	72
4	Biphenyl	154	C12H10	000092-52-4	72
5	Biphenyl	154	C12H10	000092-52-4	64



Data Path : Z:\voasrv\HPCHEM1\MSVOA_W\Data\VW120621\
 Data File : VW021183.D
 Acq On : 06 Dec 2021 21:38
 Operator : SY/VA
 Sample : M4888-11
 Misc : 6.33g/10.0mL/MSVOA_W/SOIL
 ALS Vial : 30 Sample Multiplier: 1

Instrument :
 MSVOA_W
 ClientSampleId :
 EX8B6

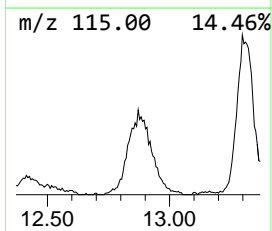
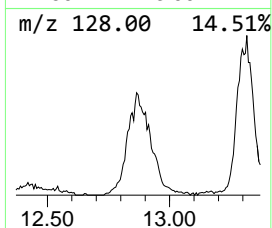
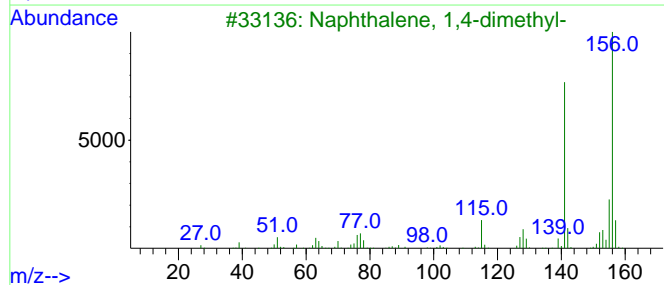
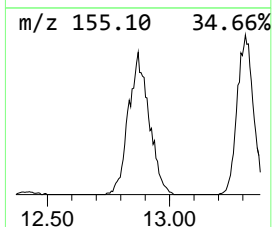
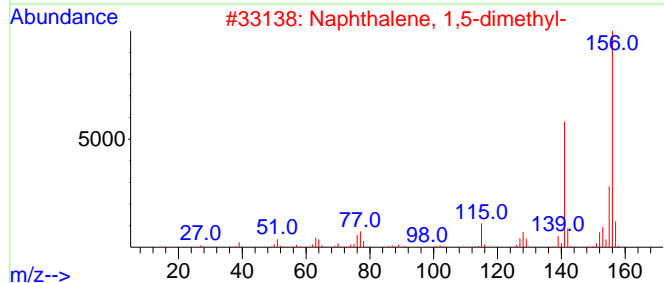
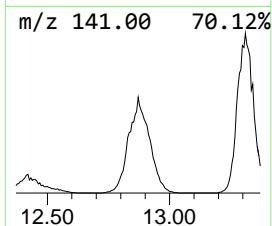
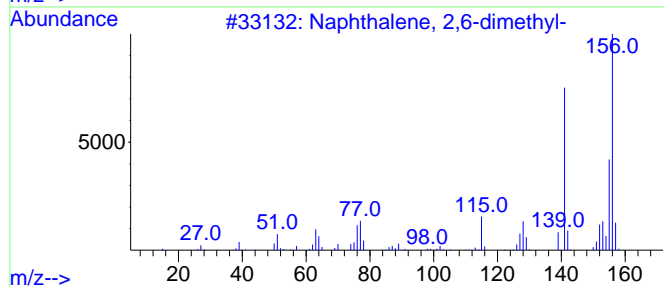
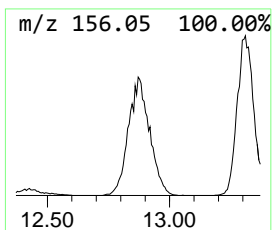
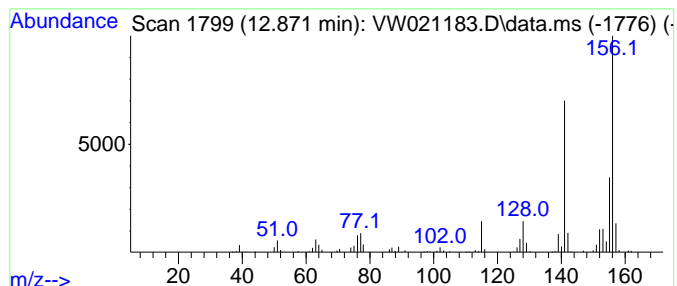
Quant Method : Z:\voasrv\HPCHEM1\MSVOA_W\Method\SFAMWLM120321SMA.M
 Quant Title : SFAM01.0

TIC Library : C:\Database\NIST20.L
 TIC Integration Parameters: LSCINT.P

 Peak Number 6 Naphthalene, 2,6-dimethyl- Concentration Rank 2

R.T.	EstConc	Area	Relative to ISTD	R.T.
12.871	95.79 ug/L	619622	1,4-Dichlorobenzene-d4	13.560

Hit#	of	5	Tentative ID	MW	MolForm	CAS#	Qual
1			Naphthalene, 2,6-dimethyl-	156	C12H12	000581-42-0	97
2			Naphthalene, 1,5-dimethyl-	156	C12H12	000571-61-9	97
3			Naphthalene, 1,4-dimethyl-	156	C12H12	000571-58-4	97
4			Naphthalene, 1,3-dimethyl-	156	C12H12	000575-41-7	97
5			Naphthalene, 2,6-dimethyl-	156	C12H12	000581-42-0	97



Data Path : Z:\voasrv\HPCHEM1\MSVOA_W\Data\VW120621\
 Data File : VW021183.D
 Acq On : 06 Dec 2021 21:38
 Operator : SY/VA
 Sample : M4888-11
 Misc : 6.33g/10.0mL/MSVOA_W/SOIL
 ALS Vial : 30 Sample Multiplier: 1

Instrument :
 MSVOA_W
 ClientSampleId :
 EX8B6

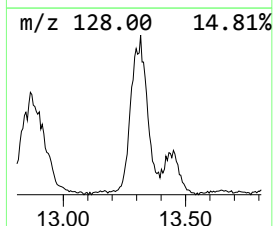
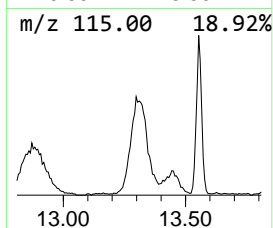
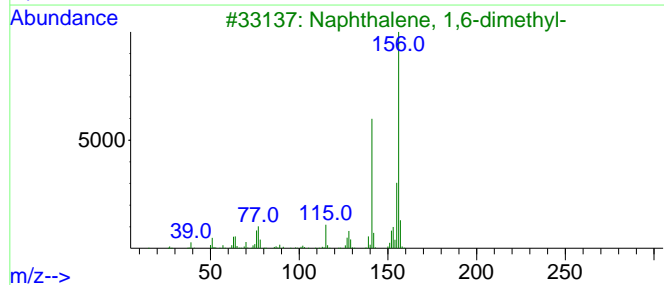
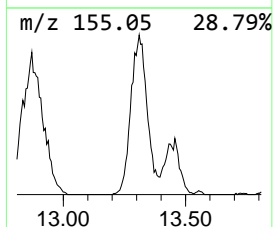
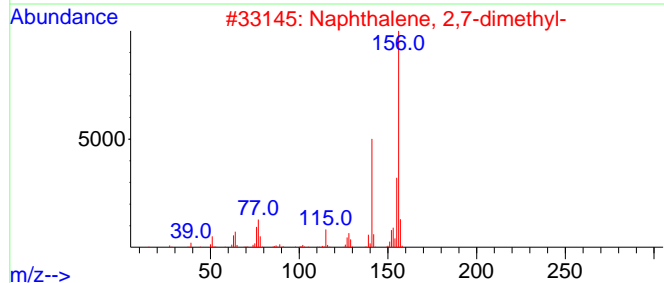
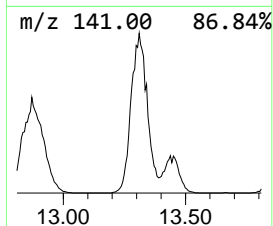
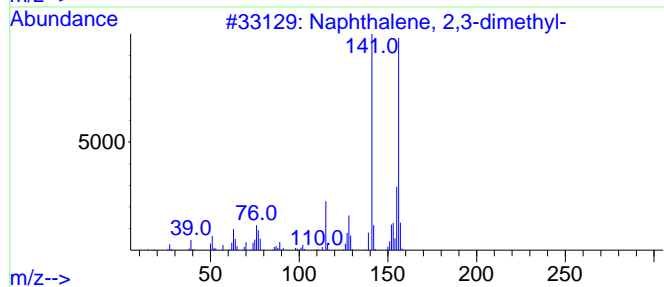
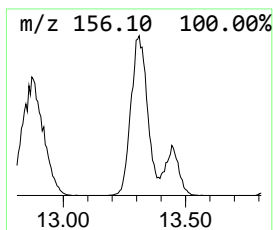
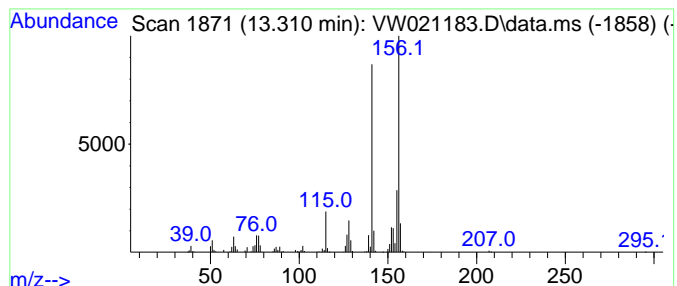
Quant Method : Z:\voasrv\HPCHEM1\MSVOA_W\Method\SFAMWLM120321SMA.M
 Quant Title : SFAM01.0

TIC Library : C:\Database\NIST0.L
 TIC Integration Parameters: LSCINT.P

 Peak Number 7 Naphthalene, 2,3-dimethyl- Concentration Rank 1

R.T.	EstConc	Area	Relative to ISTD	R.T.
13.310	95.94 ug/L	620566	1,4-Dichlorobenzene-d4	13.560

Hit#	of	5	Tentative ID	MW	MolForm	CAS#	Qual
1			Naphthalene, 2,3-dimethyl-	156	C12H12	000581-40-8	98
2			Naphthalene, 2,7-dimethyl-	156	C12H12	000582-16-1	97
3			Naphthalene, 1,6-dimethyl-	156	C12H12	000575-43-9	97
4			Naphthalene, 2,3-dimethyl-	156	C12H12	000581-40-8	97
5			Naphthalene, 1,4-dimethyl-	156	C12H12	000571-58-4	96



Data Path : Z:\voasrv\HPCHEM1\MSVOA_W\Data\VW120621\
 Data File : VW021183.D
 Acq On : 06 Dec 2021 21:38
 Operator : SY/VA
 Sample : M4888-11
 Misc : 6.33g/10.0mL/MSVOA_W/SOIL
 ALS Vial : 30 Sample Multiplier: 1

Instrument :
 MSVOA_W
 ClientSampleId :
 EX8B6

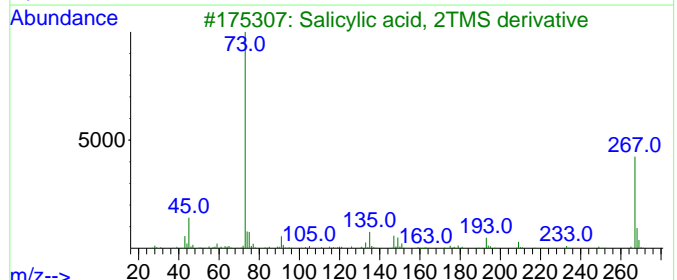
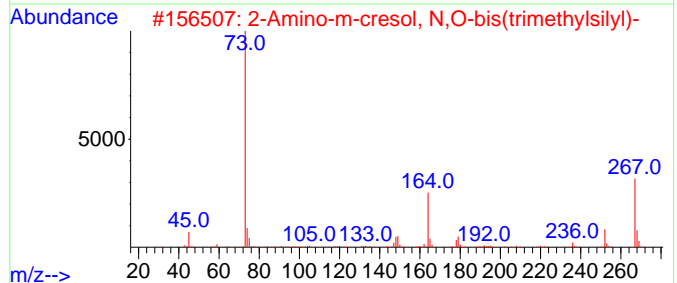
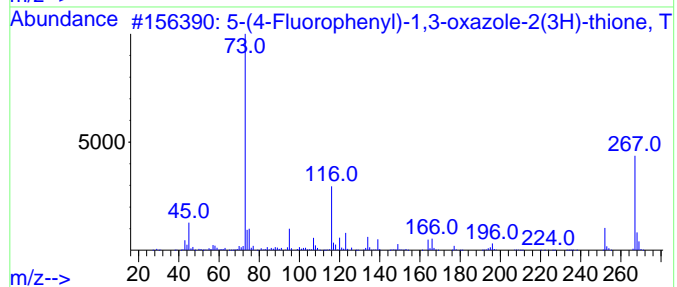
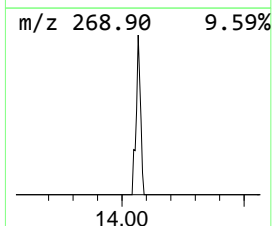
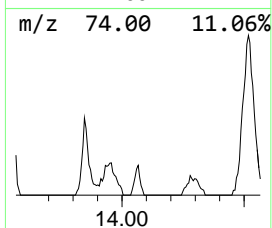
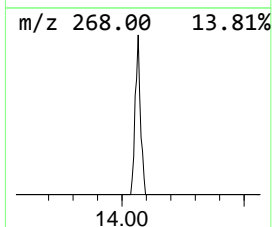
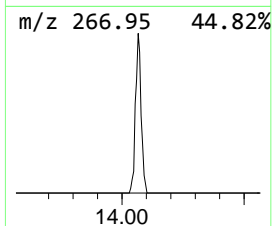
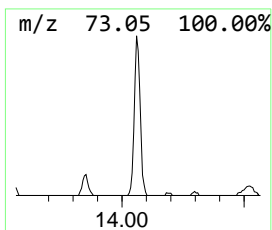
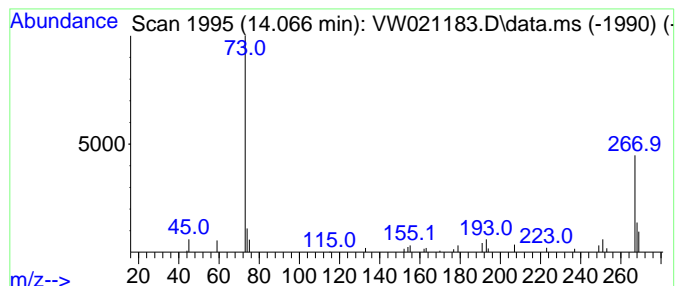
Quant Method : Z:\voasrv\HPCHEM1\MSVOA_W\Method\SFAMWLM120321SMA.M
 Quant Title : SFAM01.0

TIC Library : C:\Database\NIST20.L
 TIC Integration Parameters: LSCINT.P

 Peak Number 8 5-(4-Fluorophenyl)-1,3-oxaz... Concentration Rank 13

R.T.	EstConc	Area	Relative to ISTD	R.T.
14.066	2.98 ug/L	19275	1,4-Dichlorobenzene-d4	13.560

Hit#	of	5	Tentative ID	MW	MolForm	CAS#	Qual
1			5-(4-Fluorophenyl)-1,3-oxazole-2...	267	C12H14FNOSSi	1000497-07-6	59
2			2-Amino-m-cresol, N,O-bis(trimet...	267	C13H25NOSi2	1000449-77-1	53
3			Salicylic acid, 2TMS derivative	282	C13H22O3Si2	003789-85-3	50
4			2-[(Trimethylsilyl)oxy]-2-{4-[(t...	297	C14H27NO2Si2	1000473-27-9	45
5			Salicylic acid, 2TMS derivative	282	C13H22O3Si2	003789-85-3	38



Data Path : Z:\voasrv\HPCHEM1\MSVOA_W\Data\VW120621\
 Data File : VW021183.D
 Acq On : 06 Dec 2021 21:38
 Operator : SY/VA
 Sample : M4888-11
 Misc : 6.33g/10.0mL/MSVOA_W/SOIL
 ALS Vial : 30 Sample Multiplier: 1

Instrument :
 MSVOA_W
 ClientSampleId :
 EX8B6

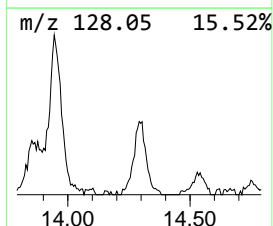
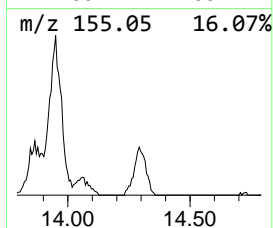
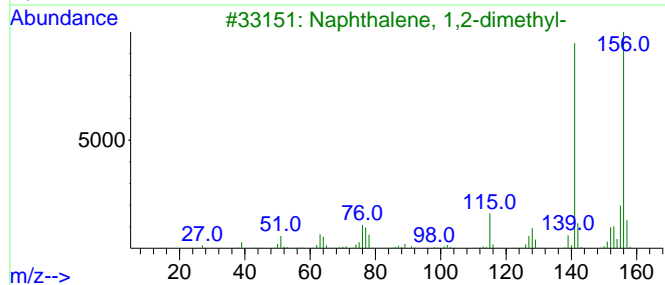
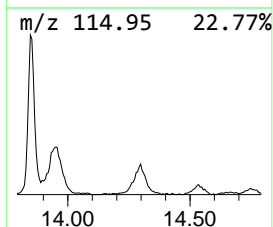
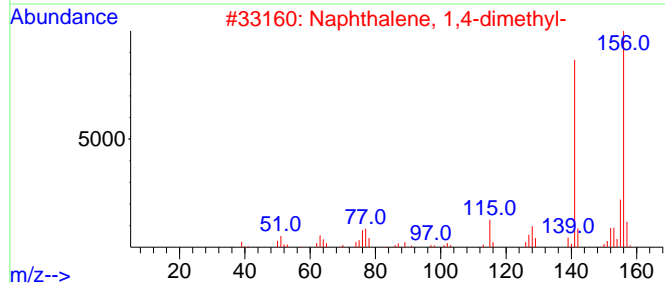
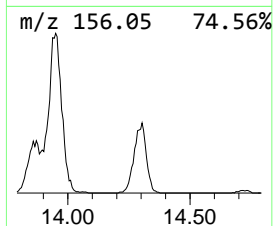
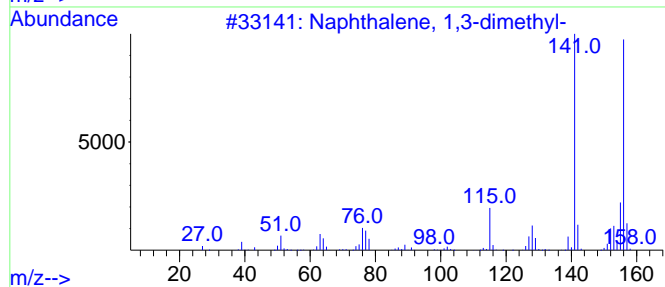
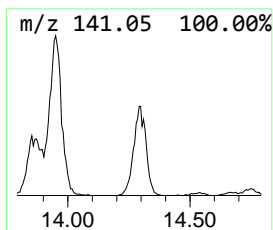
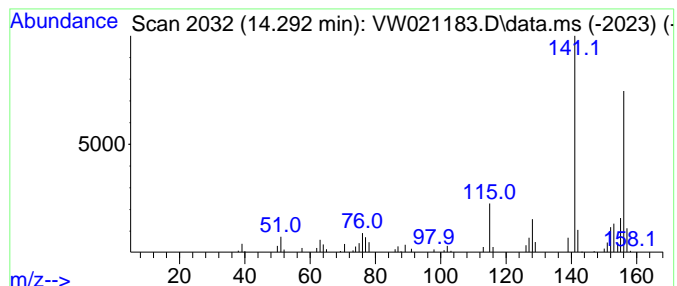
Quant Method : Z:\voasrv\HPCHEM1\MSVOA_W\Method\SFAMWLM120321SMA.M
 Quant Title : SFAM01.0

TIC Library : C:\Database\NIST20.L
 TIC Integration Parameters: LSCINT.P

 Peak Number 9 Naphthalene, 1,3-dimethyl- Concentration Rank 6

R.T.	EstConc	Area	Relative to ISTD	R.T.
14.292	15.61 ug/L	100944	1,4-Dichlorobenzene-d4	13.560

Hit#	of	5	Tentative ID	MW	MolForm	CAS#	Qual
1			Naphthalene, 1,3-dimethyl-	156	C12H12	000575-41-7	96
2			Naphthalene, 1,4-dimethyl-	156	C12H12	000571-58-4	96
3			Naphthalene, 1,2-dimethyl-	156	C12H12	000573-98-8	96
4			Naphthalene, 2,3-dimethyl-	156	C12H12	000581-40-8	95
5			Naphthalene, 2,3-dimethyl-	156	C12H12	000581-40-8	95



Data Path : Z:\voasrv\HPCHEM1\MSVOA_W\Data\VW120621\
 Data File : VW021183.D
 Acq On : 06 Dec 2021 21:38
 Operator : SY/VA
 Sample : M4888-11
 Misc : 6.33g/10.0mL/MSVOA_W/SOIL
 ALS Vial : 30 Sample Multiplier: 1

Instrument :
 MSVOA_W
 ClientSampleId :
 EX8B6

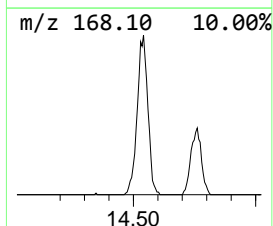
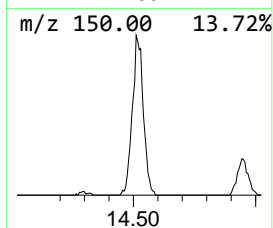
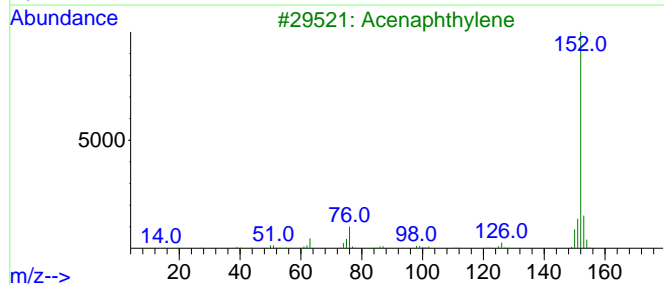
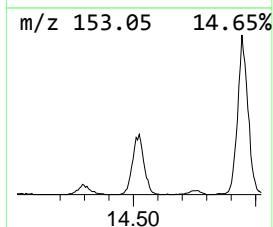
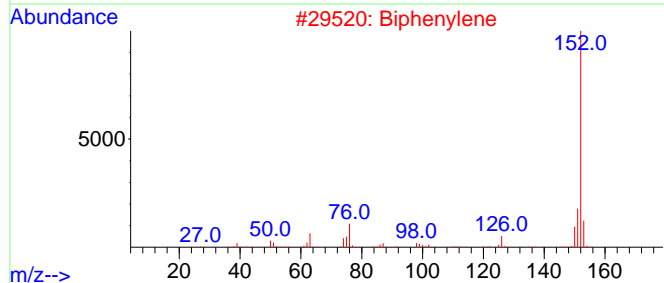
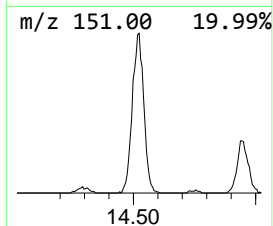
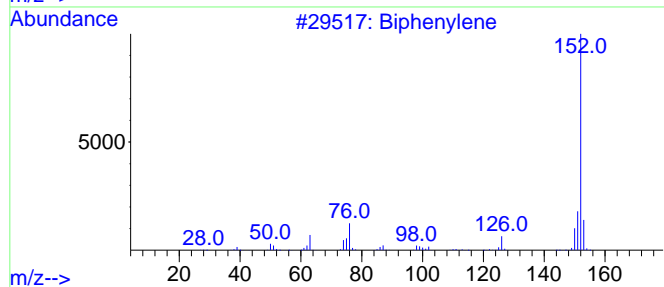
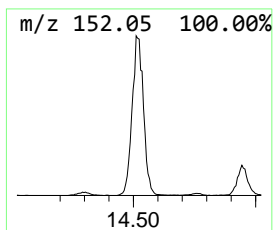
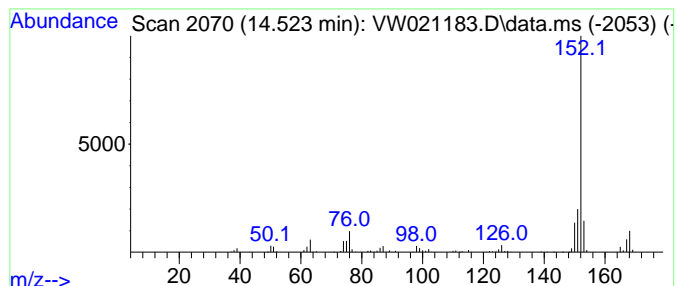
Quant Method : Z:\voasrv\HPCHEM1\MSVOA_W\Method\SFAMWLM120321SMA.M
 Quant Title : SFAM01.0

TIC Library : C:\Database\NIST20.L
 TIC Integration Parameters: LSCINT.P

 Peak Number 10 Biphenylene Concentration Rank 4

R.T.	EstConc	Area	Relative to ISTD	R.T.
14.523	55.64 ug/L	359900	1,4-Dichlorobenzene-d4	13.560

Hit#	of	5	Tentative ID	MW	MolForm	CAS#	Qual
1			Biphenylene	152	C12H8	000259-79-0	91
2			Biphenylene	152	C12H8	000259-79-0	91
3			Acenaphthylene	152	C12H8	000208-96-8	76
4			Acenaphthylene	152	C12H8	000208-96-8	76
5			Acenaphthylene	152	C12H8	000208-96-8	62



Data Path : Z:\voasrv\HPCHEM1\MSVOA_W\Data\VW120621\
 Data File : VW021183.D
 Acq On : 06 Dec 2021 21:38
 Operator : SY/VA
 Sample : M4888-11
 Misc : 6.33g/10.0mL/MSVOA_W/SOIL
 ALS Vial : 30 Sample Multiplier: 1

Instrument :
 MSVOA_W
 ClientSampleId :
 EX8B6

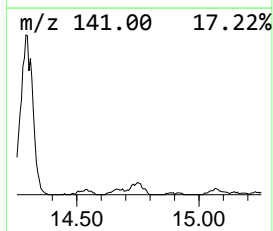
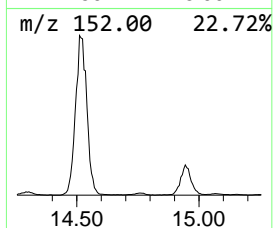
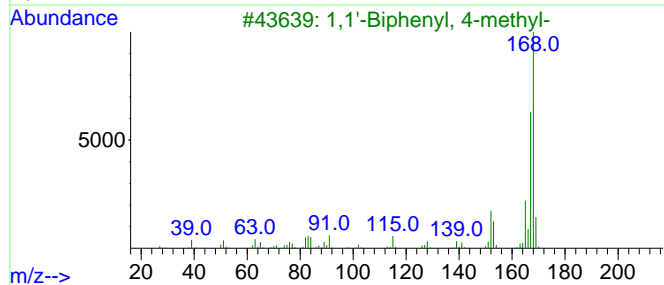
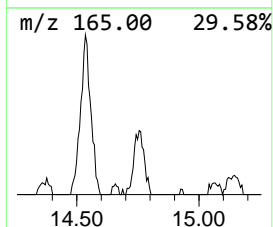
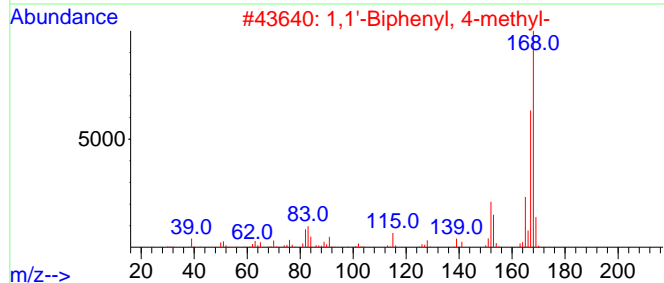
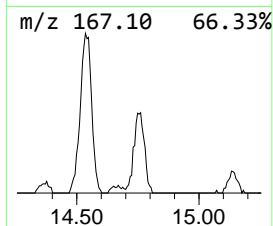
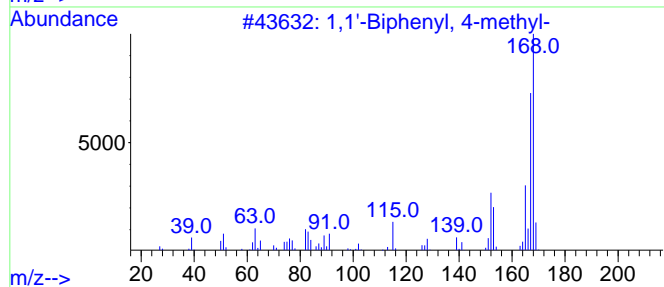
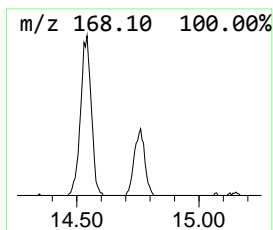
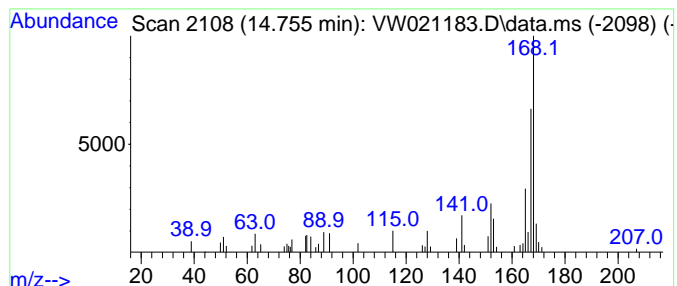
Quant Method : Z:\voasrv\HPCHEM1\MSVOA_W\Method\SFAMWLM120321SMA.M
 Quant Title : SFAM01.0

TIC Library : C:\Database\NIST20.L
 TIC Integration Parameters: LSCINT.P

 Peak Number 11 1,1'-Biphenyl, 4-methyl- Concentration Rank 11

R.T.	EstConc	Area	Relative to ISTD	R.T.
14.755	5.44 ug/L	35166	1,4-Dichlorobenzene-d4	13.560

Hit#	of	5	Tentative ID	MW	MolForm	CAS#	Qual
1			1,1'-Biphenyl, 4-methyl-	168	C13H12	000644-08-6	96
2			1,1'-Biphenyl, 4-methyl-	168	C13H12	000644-08-6	95
3			1,1'-Biphenyl, 4-methyl-	168	C13H12	000644-08-6	95
4			1,1'-Biphenyl, 3-methyl-	168	C13H12	000643-93-6	93
5			1,1'-Biphenyl, 3-methyl-	168	C13H12	000643-93-6	87



Data Path : Z:\voasrv\HPCHEM1\MSVOA_W\Data\VW120621\
 Data File : VW021183.D
 Acq On : 06 Dec 2021 21:38
 Operator : SY/VA
 Sample : M4888-11
 Misc : 6.33g/10.0mL/MSVOA_W/SOIL
 ALS Vial : 30 Sample Multiplier: 1

Instrument :
 MSVOA_W
 ClientSampleId :
 EX8B6

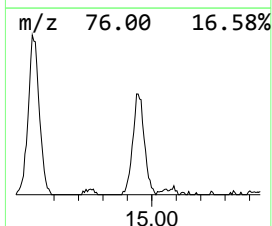
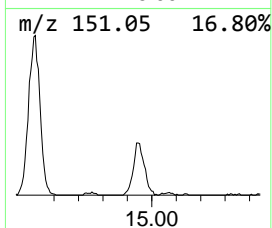
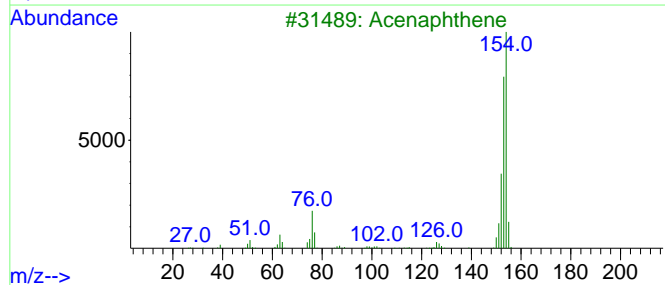
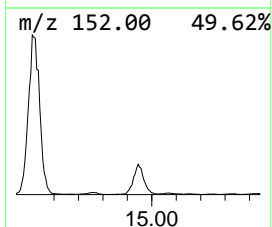
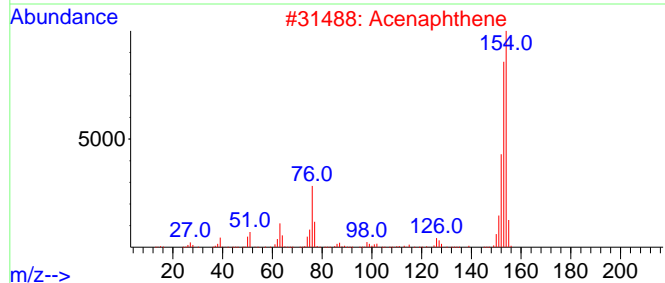
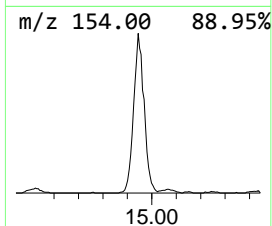
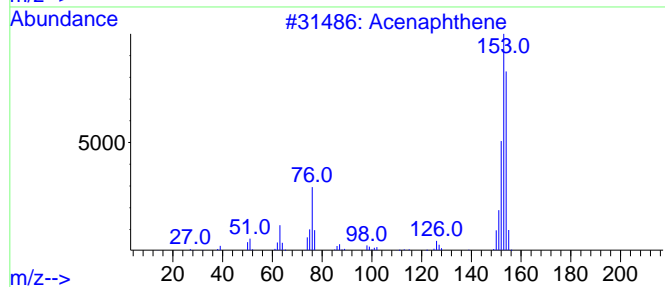
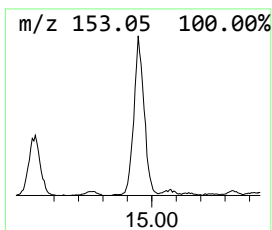
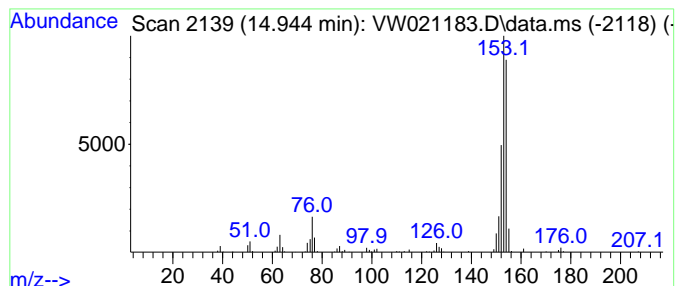
Quant Method : Z:\voasrv\HPCHEM1\MSVOA_W\Method\SFAMWLM120321SMA.M
 Quant Title : SFAM01.0

TIC Library : C:\Database\NIST20.L
 TIC Integration Parameters: LSCINT.P

 Peak Number 12 Acenaphthene Concentration Rank 5

R.T.	EstConc	Area	Relative to ISTD	R.T.
14.944	30.22 ug/L	195459	1,4-Dichlorobenzene-d4	13.560

Hit#	of 5	Tentative ID	MW	MolForm	CAS#	Qual
1		Acenaphthene	154	C12H10	000083-32-9	89
2		Acenaphthene	154	C12H10	000083-32-9	81
3		Acenaphthene	154	C12H10	000083-32-9	81
4		Acenaphthene	154	C12H10	000083-32-9	64
5		Naphthalene, 2-ethenyl-	154	C12H10	000827-54-3	59



Data Path : Z:\voasrv\HPCHEM1\MSVOA_W\Data\VW120621\
 Data File : VW021183.D
 Acq On : 06 Dec 2021 21:38
 Operator : SY/VA
 Sample : M4888-11
 Misc : 6.33g/10.0mL/MSVOA_W/SOIL
 ALS Vial : 30 Sample Multiplier: 1

Instrument :
 MSVOA_W
 ClientSampleId :
 EX8B6

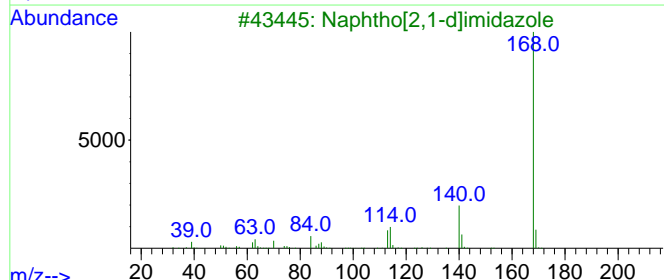
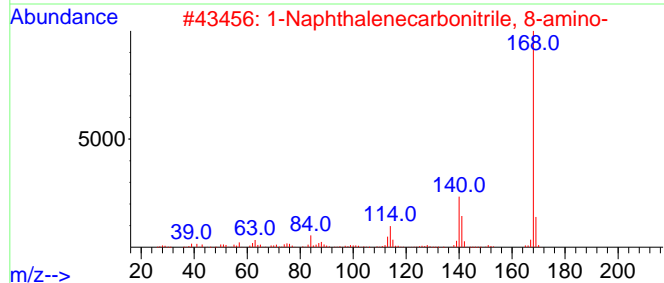
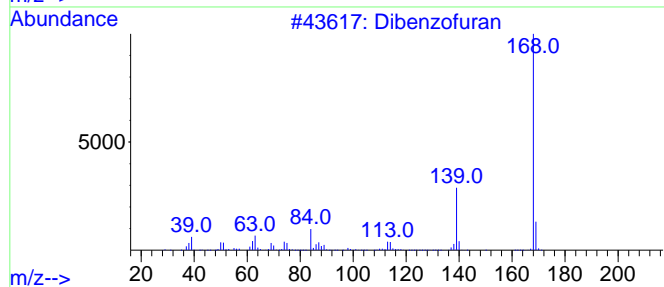
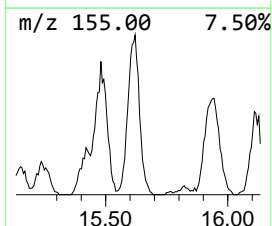
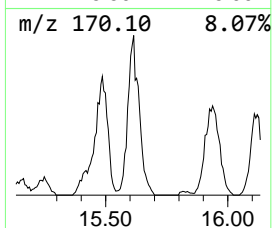
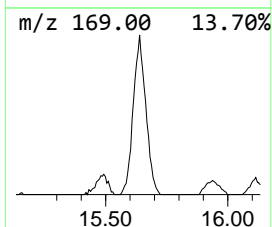
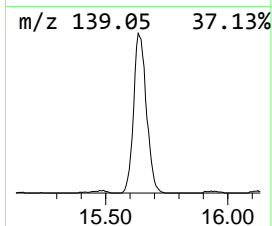
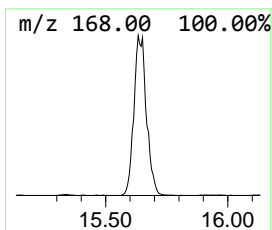
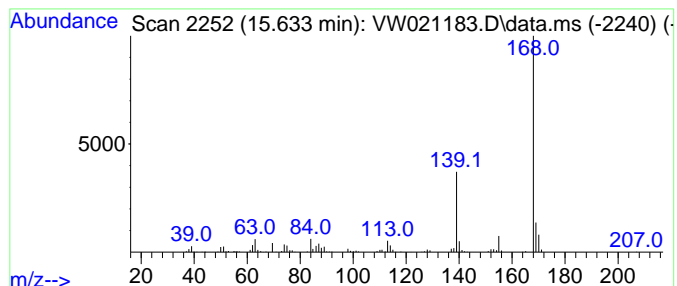
Quant Method : Z:\voasrv\HPCHEM1\MSVOA_W\Method\SFAMWLM120321SMA.M
 Quant Title : SFAM01.0

TIC Library : C:\Database\NIST20.L
 TIC Integration Parameters: LSCINT.P

 Peak Number 13 Dibenzofuran Concentration Rank 3

R.T.	EstConc	Area	Relative to ISTD	R.T.
15.633	61.78 ug/L	399634	1,4-Dichlorobenzene-d4	13.560

Hit#	of	5	Tentative ID	MW	MolForm	CAS#	Qual
1			Dibenzofuran	168	C12H8O	000132-64-9	80
2			1-Naphthalenecarbonitrile, 8-amino-	168	C11H8N2	038515-13-8	59
3			Naphtho[2,1-d]imidazole	168	C11H8N2	000233-53-4	59
4			9H-Pyrido[3,4-b]indole	168	C11H8N2	000244-63-3	59
5			2-Amino-6-fluorobenzothiazole	168	C7H5FN2S	000348-40-3	58



Data Path : Z:\voasrv\HPCHEM1\MSVOA_W\Data\VW120621\
 Data File : VW021183.D
 Acq On : 06 Dec 2021 21:38
 Operator : SY/VA
 Sample : M4888-11
 Misc : 6.33g/10.0mL/MSVOA_W/SOIL
 ALS Vial : 30 Sample Multiplier: 1

Instrument :
 MSVOA_W
 ClientSampleId :
 EX8B6

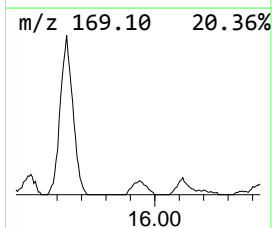
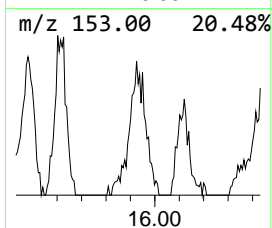
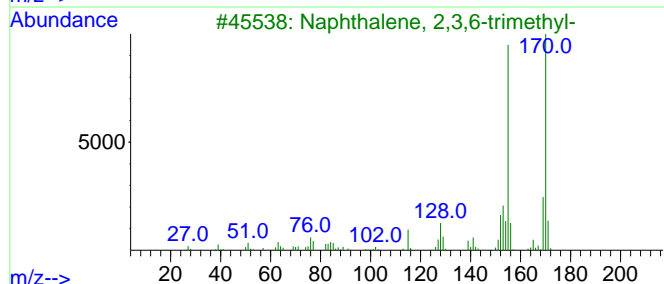
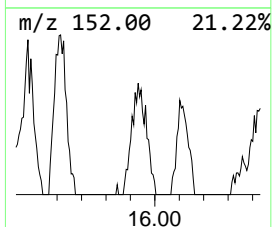
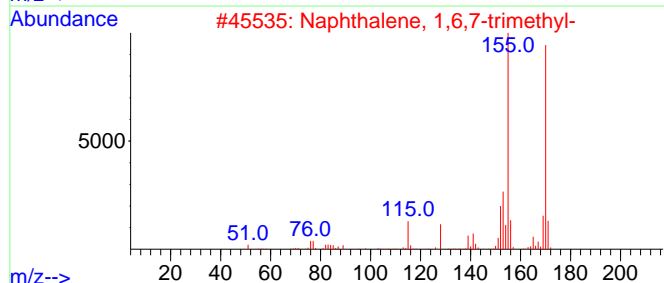
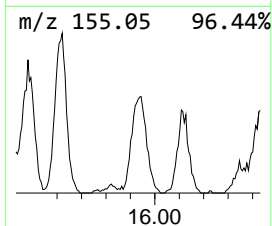
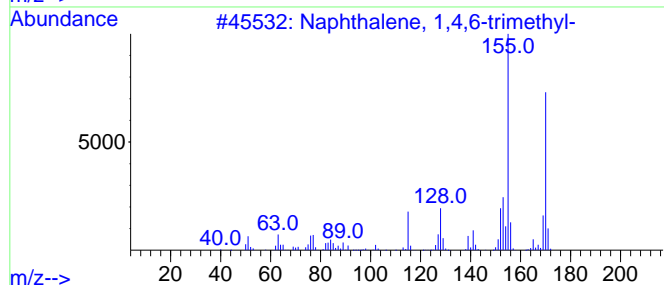
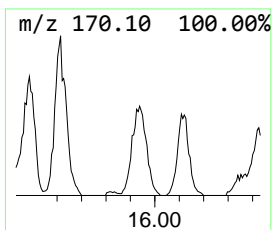
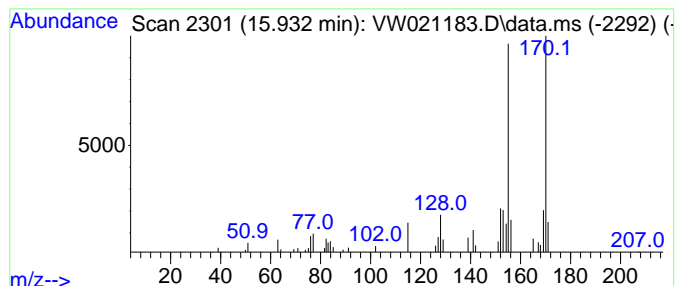
Quant Method : Z:\voasrv\HPCHEM1\MSVOA_W\Method\SFAMWLM120321SMA.M
 Quant Title : SFAM01.0

TIC Library : C:\Database\NIST20.L
 TIC Integration Parameters: LSCINT.P

 Peak Number 14 Naphthalene, 1,4,6-trimethyl- Concentration Rank 8

R.T.	EstConc	Area	Relative to ISTD	R.T.
15.932	8.05 ug/L	52087	1,4-Dichlorobenzene-d4	13.560

Hit#	of	5	Tentative ID	MW	MolForm	CAS#	Qual
1			Naphthalene, 1,4,6-trimethyl-	170	C13H14	002131-42-2	97
2			Naphthalene, 1,6,7-trimethyl-	170	C13H14	002245-38-7	97
3			Naphthalene, 2,3,6-trimethyl-	170	C13H14	000829-26-5	95
4			Naphthalene, 1,4,6-trimethyl-	170	C13H14	002131-42-2	95
5			Naphthalene, 1,4,5-trimethyl-	170	C13H14	002131-41-1	94



Data Path : Z:\voasrv\HPCHEM1\MSVOA_W\Data\VW120621\
 Data File : VW021183.D
 Acq On : 06 Dec 2021 21:38
 Operator : SY/VA
 Sample : M4888-11
 Misc : 6.33g/10.0mL/MSVOA_W/SOIL
 ALS Vial : 30 Sample Multiplier: 1

Instrument :
 MSVOA_W
 ClientSampleId :
 EX8B6

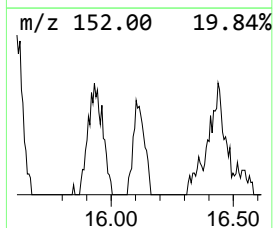
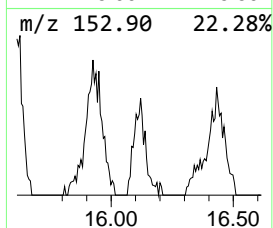
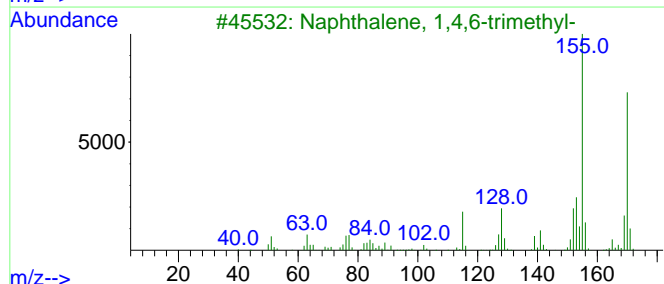
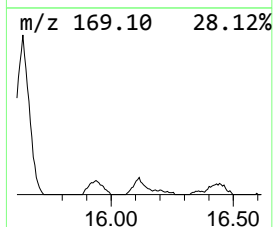
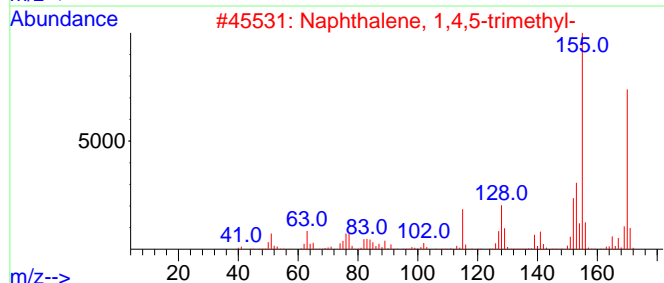
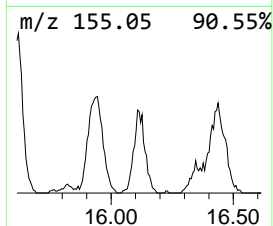
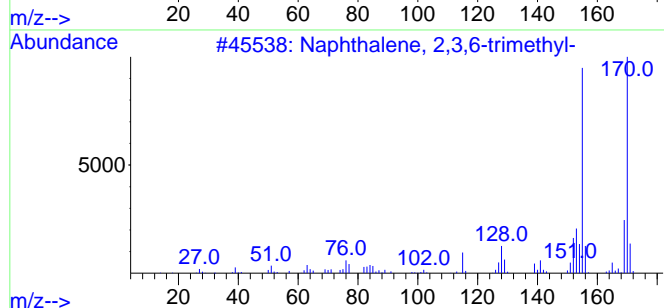
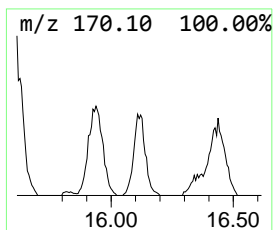
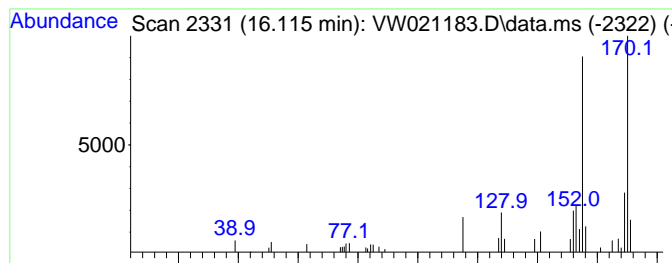
Quant Method : Z:\voasrv\HPCHEM1\MSVOA_W\Method\SFAMWLM120321SMA.M
 Quant Title : SFAM01.0

TIC Library : C:\Database\NIST20.L
 TIC Integration Parameters: LSCINT.P

 Peak Number 15 Naphthalene, 2,3,6-trimethyl- Concentration Rank 10

R.T.	EstConc	Area	Relative to ISTD	R.T.
16.115	5.69 ug/L	36825	1,4-Dichlorobenzene-d4	13.560

Hit#	of	5	Tentative ID	MW	MolForm	CAS#	Qual
1			Naphthalene, 2,3,6-trimethyl-	170	C13H14	000829-26-5	97
2			Naphthalene, 1,4,5-trimethyl-	170	C13H14	002131-41-1	96
3			Naphthalene, 1,4,6-trimethyl-	170	C13H14	002131-42-2	96
4			Naphthalene, 1,6,7-trimethyl-	170	C13H14	002245-38-7	95
5			Naphthalene, 1,6,7-trimethyl-	170	C13H14	002245-38-7	95



Data Path : Z:\voasrv\HPCHEM1\MSVOA_W\Data\VW120621\
 Data File : VW021183.D
 Acq On : 06 Dec 2021 21:38
 Operator : SY/VA
 Sample : M4888-11
 Misc : 6.33g/10.0mL/MSVOA_W/SOIL
 ALS Vial : 30 Sample Multiplier: 1

Instrument :
 MSVOA_W
 ClientSampleId :
 EX8B6

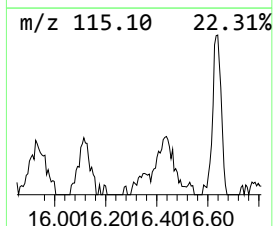
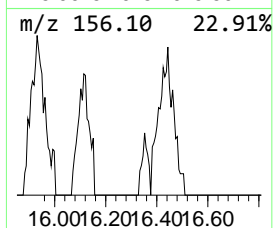
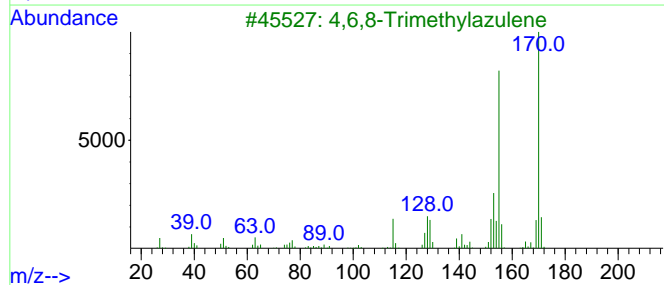
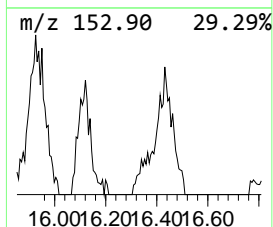
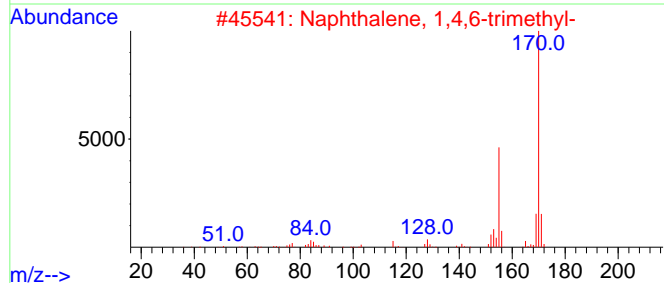
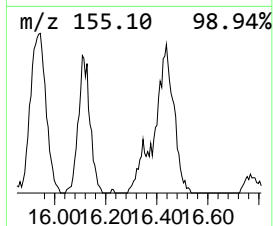
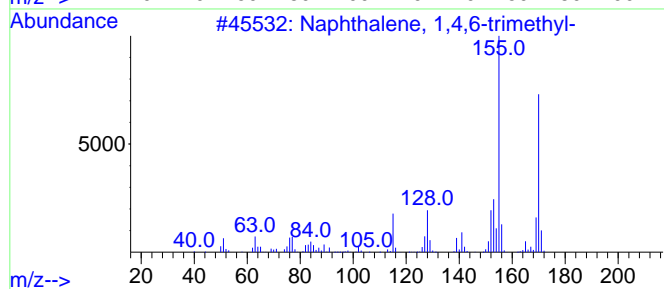
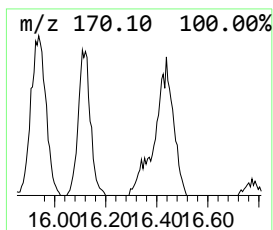
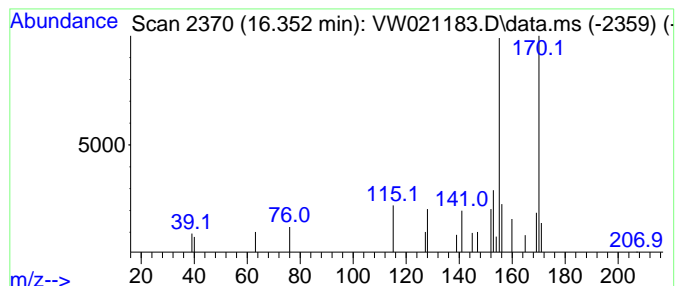
Quant Method : Z:\voasrv\HPCHEM1\MSVOA_W\Method\SFAMWLM120321SMA.M
 Quant Title : SFAM01.0

TIC Library : C:\Database\NIST20.L
 TIC Integration Parameters: LSCINT.P

 Peak Number 16 4,6,8-Trimethylazulene Concentration Rank 15

R.T.	EstConc	Area	Relative to ISTD	R.T.
16.352	1.30 ug/L	8431	1,4-Dichlorobenzene-d4	13.560

Hit#	of 5	Tentative ID	MW	MolForm	CAS#	Qual
1		Naphthalene, 1,4,6-trimethyl-	170	C13H14	002131-42-2	93
2		Naphthalene, 1,4,6-trimethyl-	170	C13H14	002131-42-2	90
3		4,6,8-Trimethylazulene	170	C13H14	000941-81-1	87
4		Naphthalene, 1,6,7-trimethyl-	170	C13H14	002245-38-7	87
5		Naphthalene, 1,6,7-trimethyl-	170	C13H14	002245-38-7	87



Data Path : Z:\voasrv\HPCHEM1\MSVOA_W\Data\VW120621\
 Data File : VW021183.D
 Acq On : 06 Dec 2021 21:38
 Operator : SY/VA
 Sample : M4888-11
 Misc : 6.33g/10.0mL/MSVOA_W/SOIL
 ALS Vial : 30 Sample Multiplier: 1

Instrument :
 MSVOA_W
 ClientSampleId :
 EX8B6

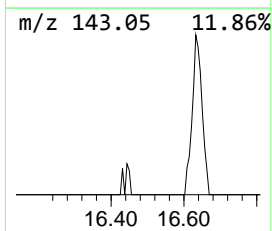
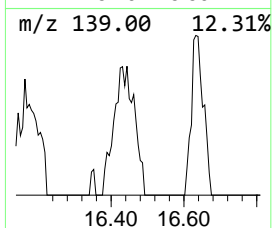
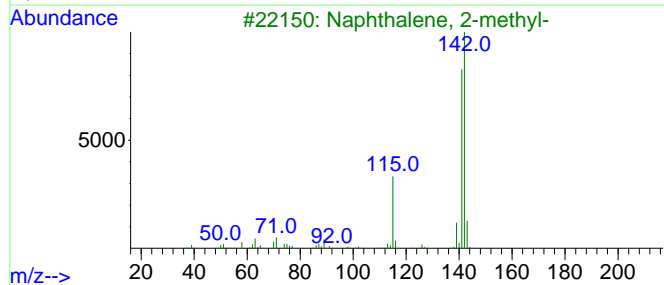
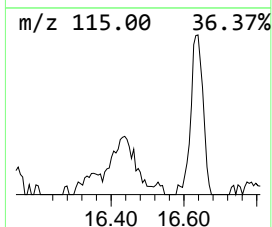
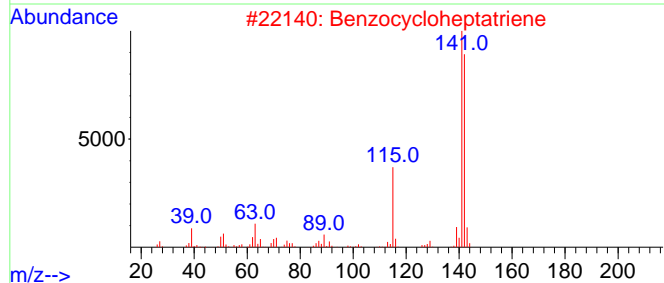
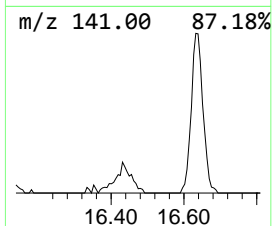
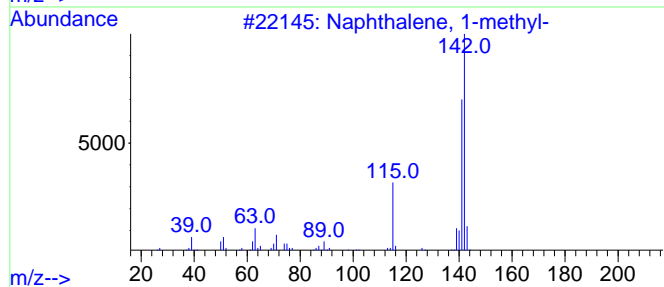
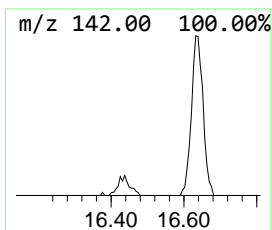
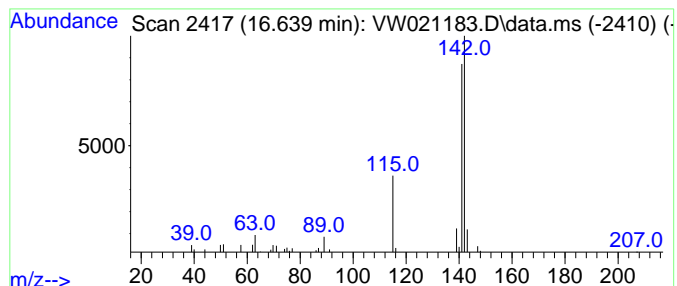
Quant Method : Z:\voasrv\HPCHEM1\MSVOA_W\Method\SFAMWLM120321SMA.M
 Quant Title : SFAM01.0

TIC Library : C:\Database\NIST20.L
 TIC Integration Parameters: LSCINT.P

 Peak Number 17 Naphthalene, 1-methyl- Concentration Rank 12

R.T.	EstConc	Area	Relative to ISTD	R.T.
16.639	3.33 ug/L	21567	1,4-Dichlorobenzene-d4	13.560

Hit#	of 5	Tentative ID	MW	MolForm	CAS#	Qual
1		Naphthalene, 1-methyl-	142	C11H10	000090-12-0	91
2		Benzocycloheptatriene	142	C11H10	000264-09-5	91
3		Naphthalene, 2-methyl-	142	C11H10	000091-57-6	91
4		Naphthalene, 1-methyl-	142	C11H10	000090-12-0	91
5		Naphthalene, 1-methyl-	142	C11H10	000090-12-0	91



Data Path : Z:\voasrv\HPCHEM1\MSVOA_W\Data\VW120621\
 Data File : VW021183.D
 Acq On : 06 Dec 2021 21:38
 Operator : SY/VA
 Sample : M4888-11
 Misc : 6.33g/10.0mL/MSVOA_W/SOIL
 ALS Vial : 30 Sample Multiplier: 1

Instrument :
 MSVOA_W
 ClientSampleId :
 EX8B6

Quant Method : Z:\voasrv\HPCHEM1\MSVOA_W\Method\SFAMWLM120321SMA.M
 Quant Title : SFAM01.0

TIC Library : C:\Database\NIST0.L
 TIC Integration Parameters: LSCINT.P

TIC Top Hit name	RT	EstConc	Units	Response	--Internal Standard--			
					#	RT	Resp	Conc
Biphenyl	11.286	1.3	ug/L	11379	2	11.628	222244	25.0
Naphthalene, 2,...	12.871	95.8	ug/L	619622	3	13.560	161709	25.0
Naphthalene, 2,...	13.310	95.9	ug/L	620566	3	13.560	161709	25.0
5-(4-Fluorophen...	14.066	3.0	ug/L	19275	3	13.560	161709	25.0
Naphthalene, 1,...	14.292	15.6	ug/L	100944	3	13.560	161709	25.0
Biphenylene	14.523	55.6	ug/L	359900	3	13.560	161709	25.0
1,1'-Biphenyl, ...	14.755	5.4	ug/L	35166	3	13.560	161709	25.0
Acenaphthene	14.944	30.2	ug/L	195459	3	13.560	161709	25.0
Dibenzofuran	15.633	61.8	ug/L	399634	3	13.560	161709	25.0
Naphthalene, 1,...	15.932	8.1	ug/L	52087	3	13.560	161709	25.0
Naphthalene, 2,...	16.115	5.7	ug/L	36825	3	13.560	161709	25.0
4,6,8-Trimethyl...	16.352	1.3	ug/L	8431	3	13.560	161709	25.0
Naphthalene, 1-...	16.639	3.3	ug/L	21567	3	13.560	161709	25.0