

Data Path : Z:\VOASRV\HPCHEM1\MSVOA W\DATA\VW120718\
 Data File : VW007326.D
 Acq On : 08 Dec 2018 00:00
 Operator : SY/AP
 Sample : J6299-03
 Misc : 4.51G/10ML/MSVOA W/SOIL
 ALS Vial : 1 Sample Multiplier: 1

Instrument :
 MSVOA_W
 ClientSampled :
 F9F22

Quant Time: Dec 08 02:07:31 2018
 Quant Method : Z:\VOASRV\HPCHEM1\MSVOA_W\METHOD\SOM2WLM120718S.M
 Quant Title : VOC Analysis
 QLast Update : Sat Dec 08 02:02:23 2018
 Response via : Initial Calibration

Internal Standards	R.T.	QIon	Response	Conc	Units	Dev(Min)
1) 1,4-Difluorobenzene	8.84	114	70994	25.00	ug/L	0.00
28) Chlorobenzene-d5	11.63	117	58224	25.00	ug/L	0.00
60) 1,4-Dichlorobenzene-d4	13.57	152	24832	25.00	ug/L	0.00

System Monitoring Compounds

4) Vinyl Chloride-d3	2.36	65	26561	57.44	ug/L	0.00
Spiked Amount	25.000	Range	30 - 150	Recovery	=	229.76%#
7) Chloroethane-d5	2.89	69	20727	52.93	ug/L	0.00
Spiked Amount	25.000	Range	30 - 150	Recovery	=	211.72%#
10) 1,1-Dichloroethene-d2	4.01	63	62792	39.37	ug/L	0.00
Spiked Amount	25.000	Range	45 - 110	Recovery	=	157.48%#
20) 2-Butanone-d5	7.07	46	18705	64.17	ug/L	0.00
Spiked Amount	50.000	Range	20 - 135	Recovery	=	128.34%
24) Chloroform-d	7.65	84	84276	50.33	ug/L	0.00
Spiked Amount	25.000	Range	40 - 150	Recovery	=	201.32%#
26) 1,2-Dichloroethane-d4	8.31	65	48909	51.31	ug/L	0.00
Spiked Amount	25.000	Range	70 - 130	Recovery	=	205.24%#
29) Benzene-d6	8.27	84	169723	53.67	ug/L	0.00
Spiked Amount	25.000	Range	20 - 135	Recovery	=	214.68%#
33) 1,2-Dichloropropane-d6	9.27	67	48031	53.22	ug/L	0.00
Spiked Amount	25.000	Range	70 - 120	Recovery	=	212.88%#
37) Toluene-d8	10.33	98	156578	52.81	ug/L	0.00
Spiked Amount	25.000	Range	30 - 130	Recovery	=	211.24%#
38) trans-1,3-Dichloropropene-	10.58	79	19353	41.95	ug/L	0.00
Spiked Amount	25.000	Range	30 - 135	Recovery	=	167.80%#
39) 2-Hexanone-d5	10.92	63	13119	60.39	ug/L	0.00
Spiked Amount	50.000	Range	20 - 135	Recovery	=	120.78%
48) 1,1,2,2-Tetrachloroethane-	12.69	84	35827	43.57	ug/L	0.00
Spiked Amount	25.000	Range	45 - 120	Recovery	=	174.28%#
61) 1,2-Dichlorobenzene-d4	13.86	152	44666	51.13	ug/L	0.00
Spiked Amount	25.000	Range	75 - 120	Recovery	=	204.52%#

Target Compounds

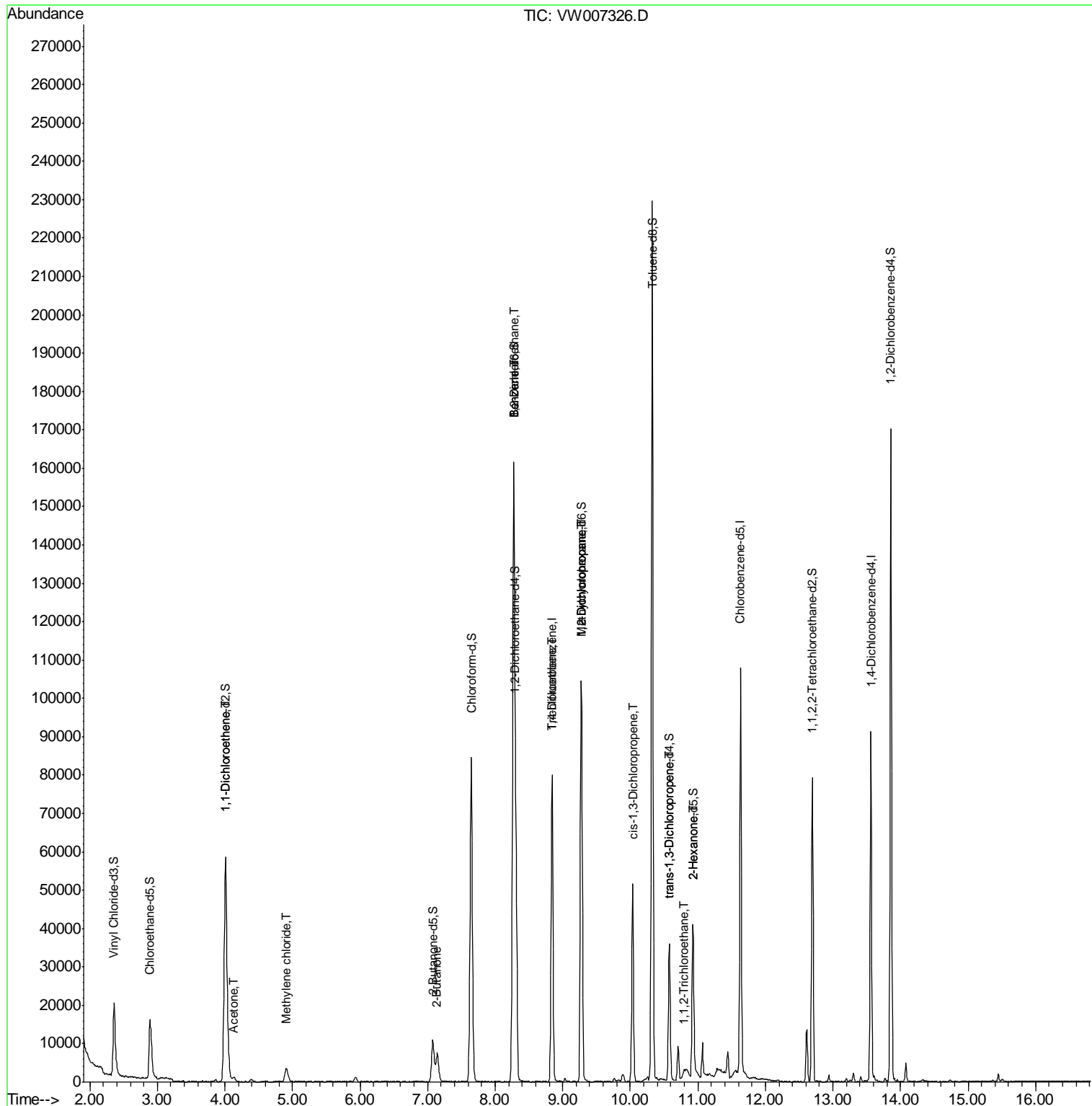
Target Compounds	R.T.	QIon	Response	Conc	Units	Ovalue
12) 1,1-Dichloroethene	4.01	96	445	0.534	ug/L #	1
13) Acetone	4.12	43	1152	3.399	ug/L	81
16) Methylene chloride	4.90	84	2926	2.551	ug/L	96
21) 2-Butanone	7.13	43	825	2.265	ug/L #	45
27) 1,2-Dichloroethane	8.27	62	972	0.824	ug/L #	76
34) Benzene	8.27	78	1409	0.422	ug/L	100
35) Trichloroethene	8.85	95	2193	2.292	ug/L #	4
36) Methylcyclohexane	9.27	83	12542	7.592	ug/L #	20
40) 1,2-Dichloropropane	9.27	63	5748	7.041	ug/L #	86
42) cis-1,3-Dichloropropene	10.04	75	1383	1.009	ug/L #	54
45) trans-1,3-Dichloropropene	10.57	75	970	0.806	ug/L	97
46) 1,1,2-Trichloroethane	10.80	97	263	0.391	ug/L #	13
49) 2-Hexanone	10.93	43	2204	4.853	ug/L #	65

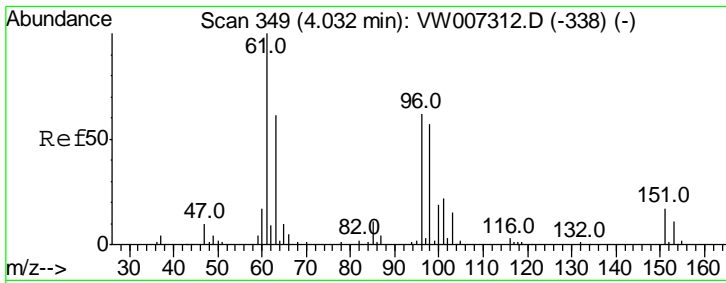
(#) = qualifier out of range (m) = manual integration (+) = signals summed

Data Path : Z:\VOASRV\HPCHEM1\MSVOA W\DATA\VW120718\
 Data File : VW007326.D
 Acq On : 08 Dec 2018 00:00
 Operator : SY/AP
 Sample : J6299-03
 Misc : 4.51G/10ML/MSVOA W/SOIL
 ALS Vial : 1 Sample Multiplier: 1

Instrument :
 MSVOA_W
 Client Sampled :
 F9F22

Quant Time: Dec 08 02:07:31 2018
 Quant Method : Z:\VOASRV\HPCHEM1\MSVOA_W\METHOD\SOM2WLM120718S.M
 Quant Title : VOC Analysis
 QLast Update : Sat Dec 08 02:02:23 2018
 Response via : Initial Calibration

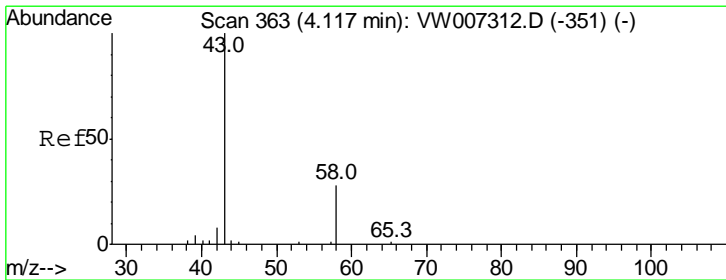
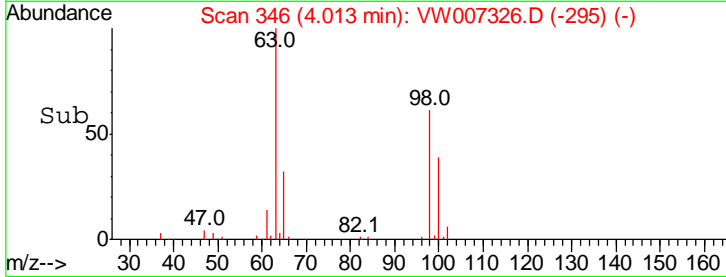
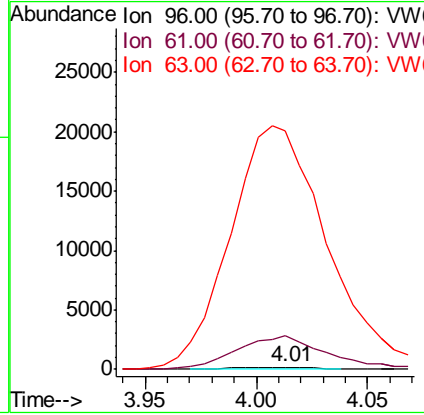
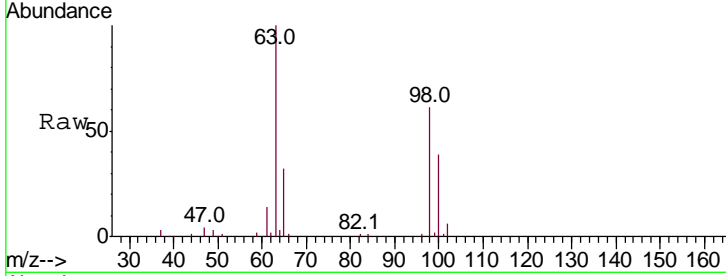




#12
 1,1-Dichloroethene
 Concen: 0.534 ug/L
 RT: 4.01 min Scan# 346
 Delta R.T. -0.02 min
 Lab File: VW007326.D
 Acq: 08 Dec 2018 00:00

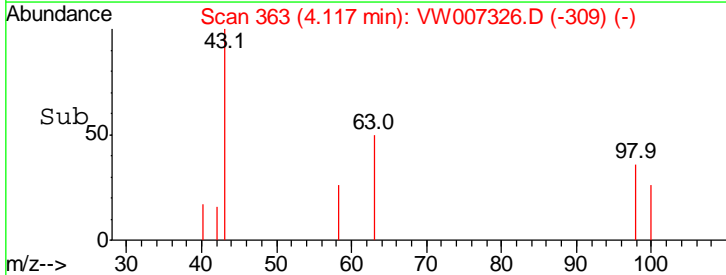
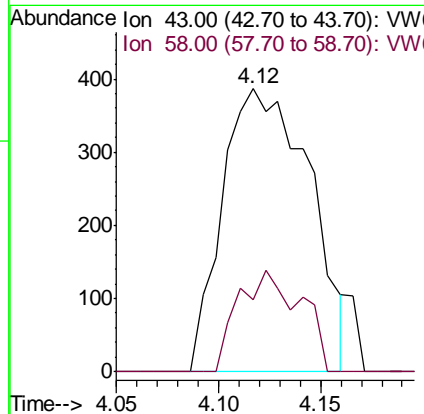
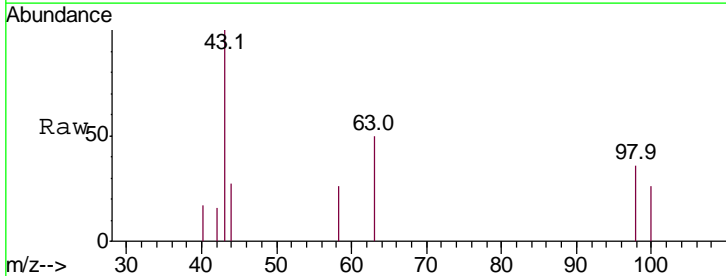
Instrument :
 MSVOA_W
 ClientSampled :
 F9F22

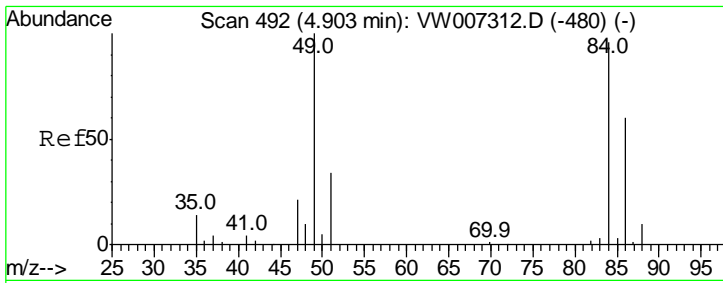
Tgt Ion: 96 Resp: 445
 Ion Ratio Lower Upper
 96 100
 61 1488.8 117.2 217.8#
 63 10663.8 89.7 166.7#



#13
 Acetone
 Concen: 3.399 ug/L
 RT: 4.12 min Scan# 363
 Delta R.T. -0.00 min
 Lab File: VW007326.D
 Acq: 08 Dec 2018 00:00

Tgt Ion: 43 Resp: 1152
 Ion Ratio Lower Upper
 43 100
 58 19.5 0.0 59.2

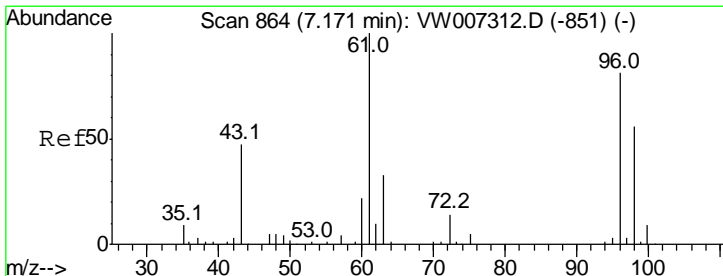
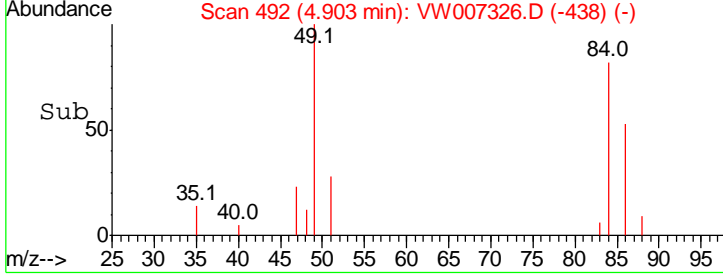
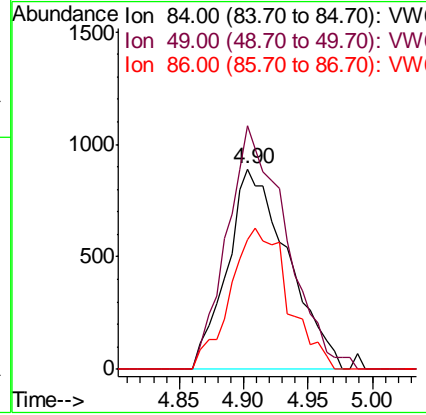
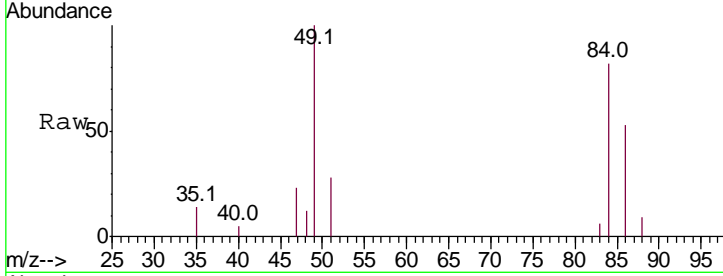




#16
 Methylene chloride
 Concen: 2.551 ug/L
 RT: 4.90 min Scan# 492
 Delta R.T. -0.00 min
 Lab File: VW007326.D
 Acq: 08 Dec 2018 00:00

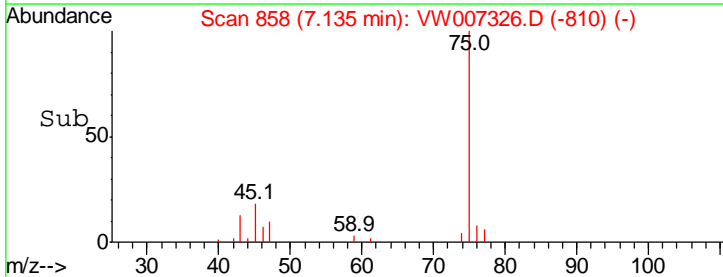
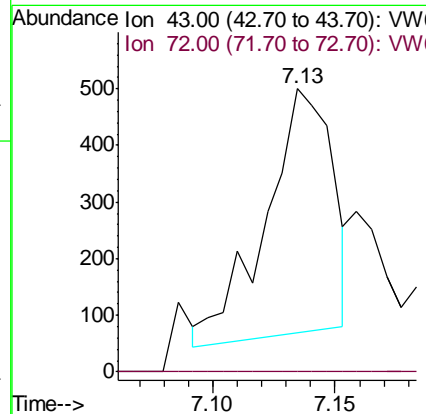
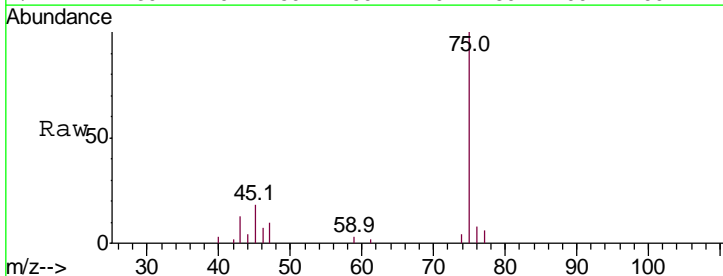
Instrument :
 MSVOA_W
ClientSampled :
 F9F22

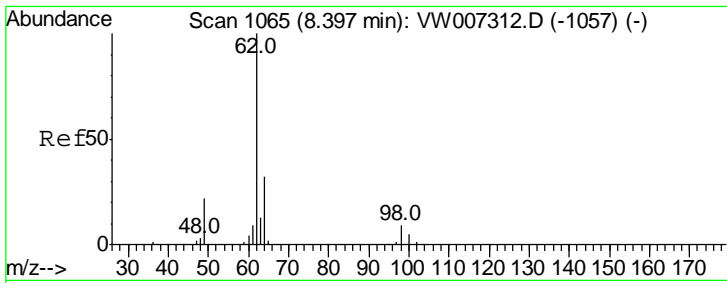
Tgt Ion	Resp	Lower	Upper
84	100		
49	121.3	80.8	150.2
86	64.6	45.8	85.2



#21
 2-Butanone
 Concen: 2.265 ug/L
 RT: 7.13 min Scan# 858
 Delta R.T. -0.04 min
 Lab File: VW007326.D
 Acq: 08 Dec 2018 00:00

Tgt Ion	Resp	Lower	Upper
43	100		
72	0.0	14.7	44.1#

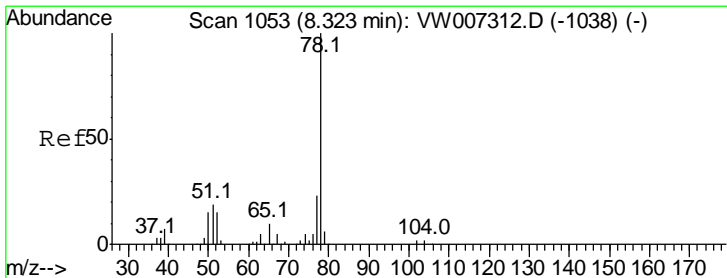
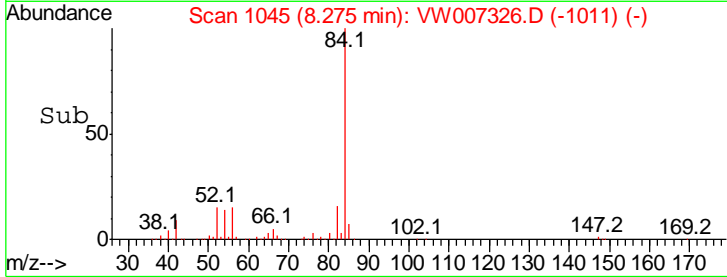
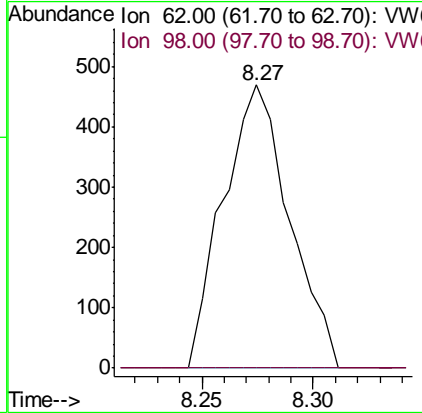
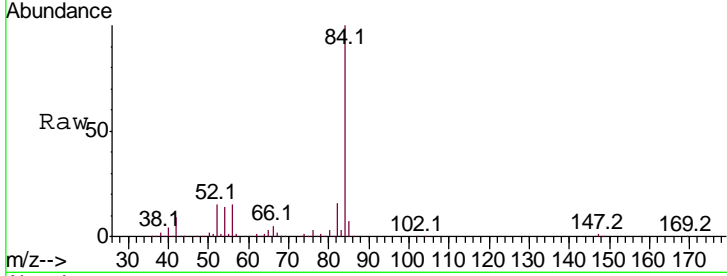




#27
 1,2-Dichloroethane
 Concen: 0.824 ug/L
 RT: 8.27 min Scan# 1045
 Delta R.T. -0.12 min
 Lab File: VW007326.D
 Acq: 08 Dec 2018 00:00

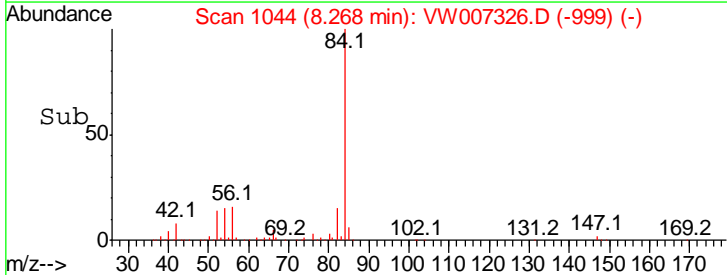
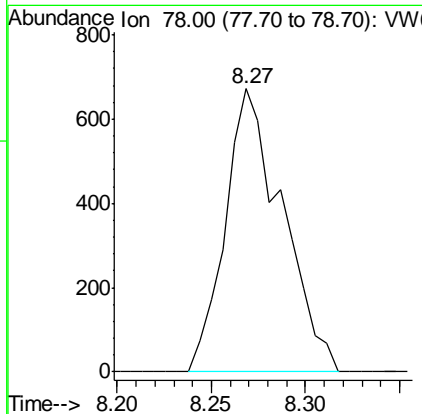
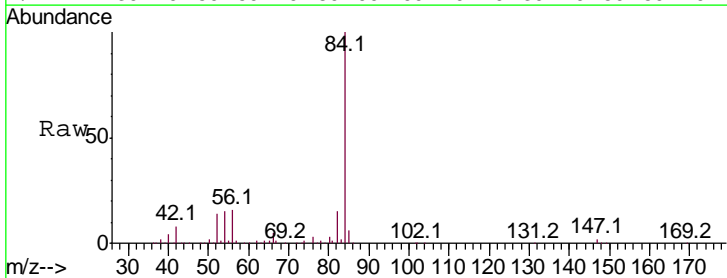
Instrument : MSVOA_W
 ClientSampled : F9F22

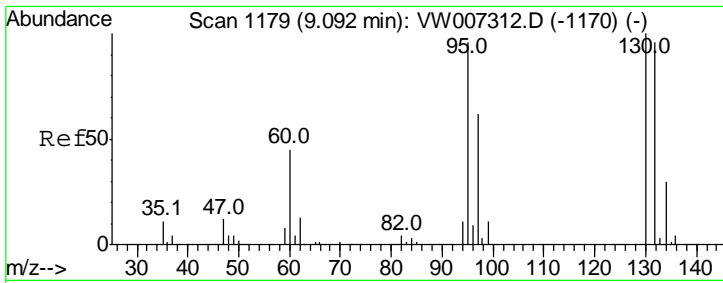
Tgt Ion	Resp	Lower	Upper
62	100		
98	0.0	6.9	10.3#



#34
 Benzene
 Concen: 0.422 ug/L
 RT: 8.27 min Scan# 1044
 Delta R.T. -0.05 min
 Lab File: VW007326.D
 Acq: 08 Dec 2018 00:00

Tgt Ion: 78 Resp: 1409

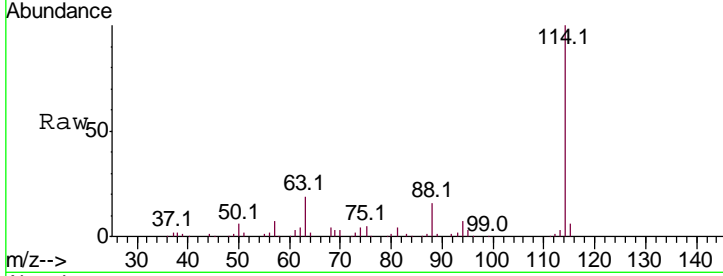




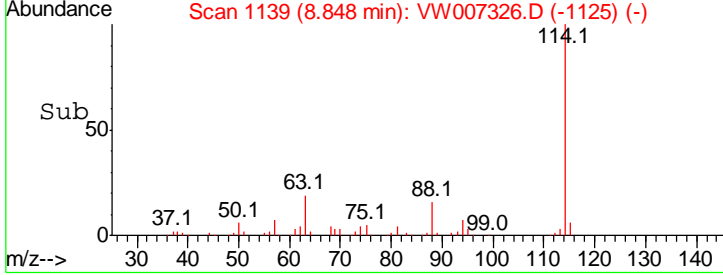
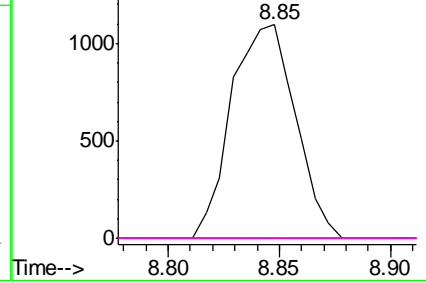
#35
 Trichloroethene
 Concen: 2.292 ug/L
 RT: 8.85 min Scan# 1139
 Delta R.T. -0.24 min
 Lab File: VW007326.D
 Acq: 08 Dec 2018 00:00

Instrument :
 MSVOA_W
 ClientSampled :
 F9F22

Tgt Ion	Resp	Lower	Upper
95	100		
97	0.0	45.8	85.0#
132	0.0	68.0	126.4#
130	0.0	71.6	133.0#



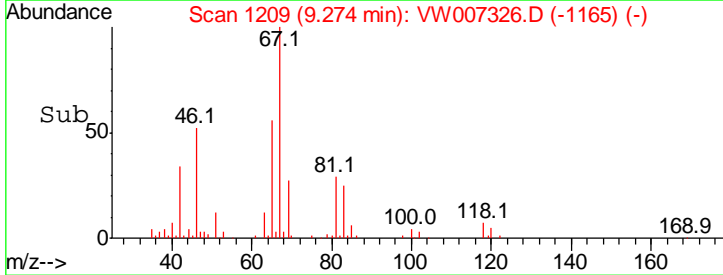
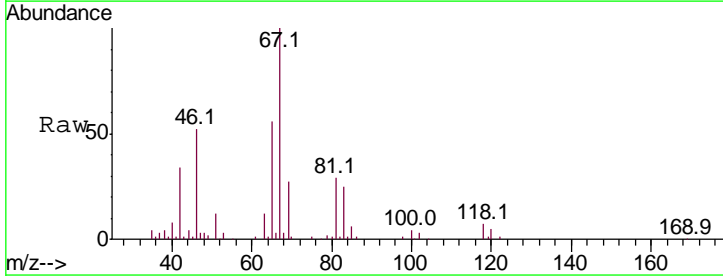
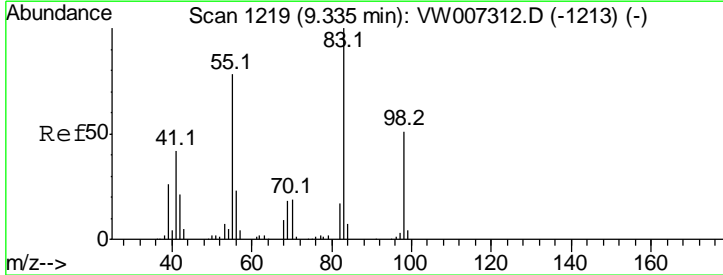
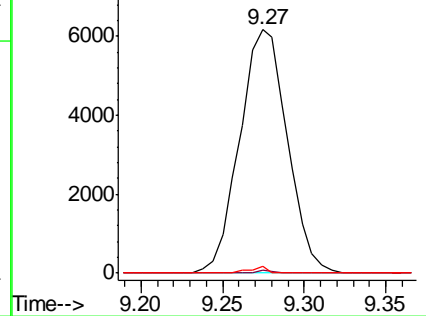
Abundance Ion 95.00 (94.70 to 95.70): VW
 Ion 97.00 (96.70 to 97.70): VW
 Ion 132.00 (131.70 to 132.70): V
 Ion 130.00 (129.70 to 130.70): V

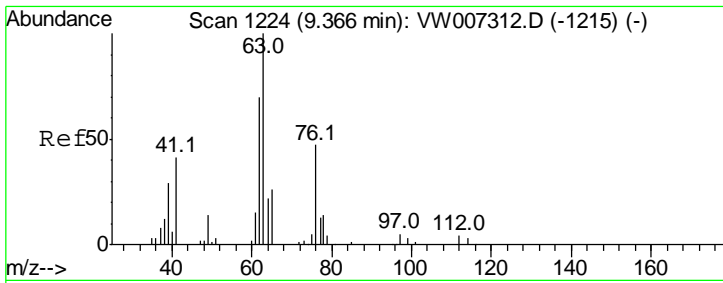


#36
 Methylcyclohexane
 Concen: 7.592 ug/L
 RT: 9.27 min Scan# 1209
 Delta R.T. -0.06 min
 Lab File: VW007326.D
 Acq: 08 Dec 2018 00:00

Tgt Ion	Resp	Lower	Upper
83	100		
55	0.4	59.4	89.2#
98	1.0	38.1	57.1#

Abundance Ion 83.00 (82.70 to 83.70): VW
 Ion 55.00 (54.70 to 55.70): VW
 Ion 98.00 (97.70 to 98.70): VW

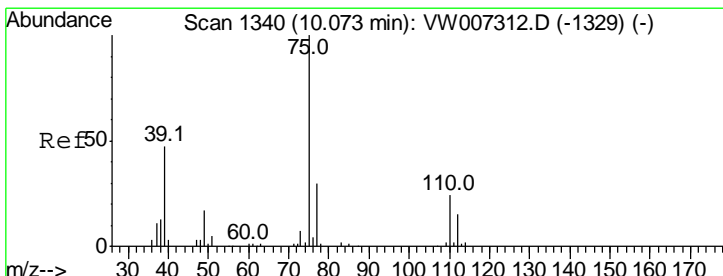
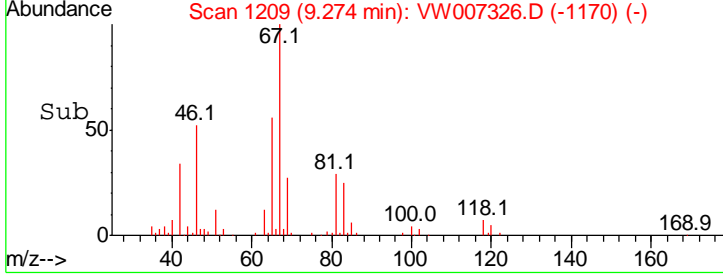
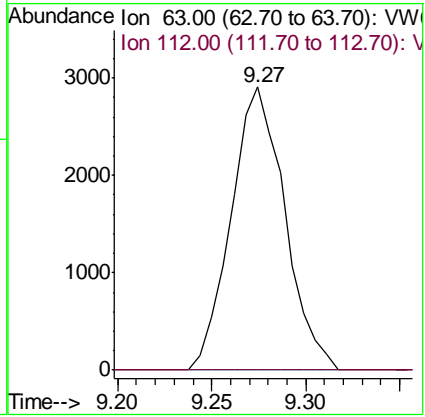
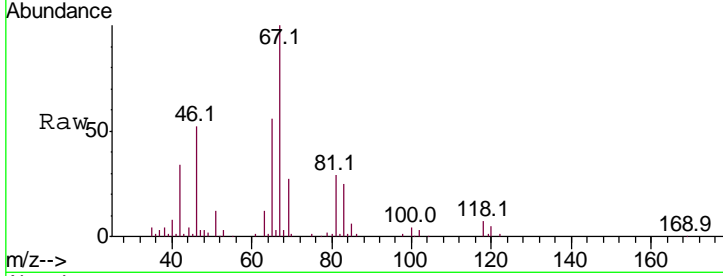




#40
 1,2-Dichloropropane
 Concen: 7.041 ug/L
 RT: 9.27 min Scan# 1209
 Delta R.T. -0.09 min
 Lab File: VW007326.D
 Acq: 08 Dec 2018 00:00

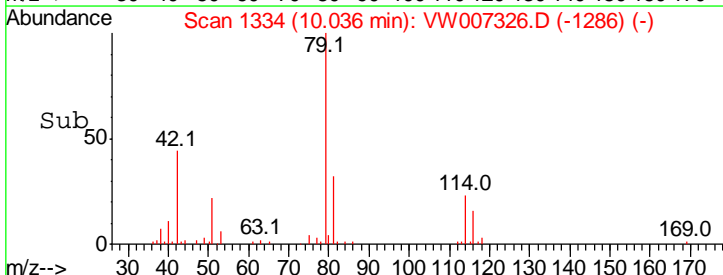
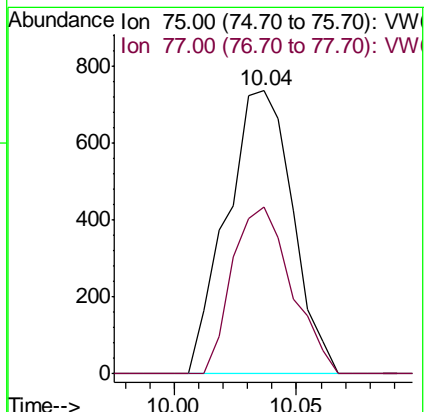
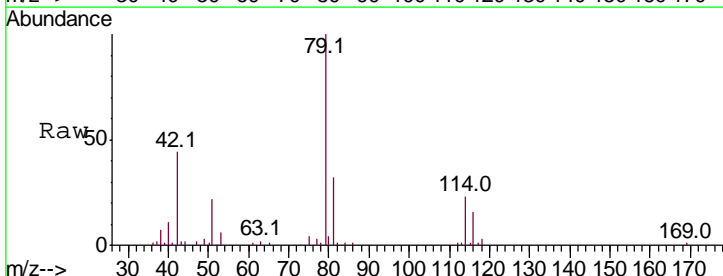
Instrument : MSVOA_W
 ClientSampled : F9F22

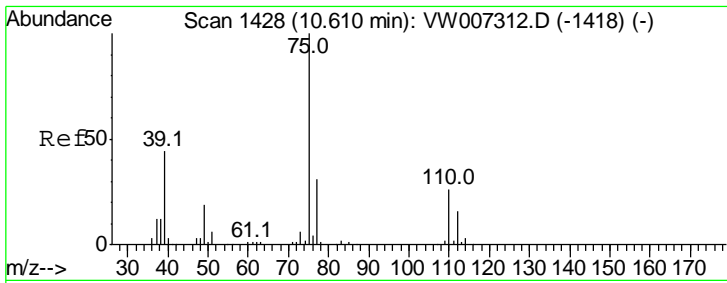
Tgt Ion	Resp	Lower	Upper
63	100		
112	0.0	3.6	5.4#



#42
 cis-1,3-Dichloropropene
 Concen: 1.009 ug/L
 RT: 10.04 min Scan# 1334
 Delta R.T. -0.04 min
 Lab File: VW007326.D
 Acq: 08 Dec 2018 00:00

Tgt Ion	Resp	Lower	Upper
75	100		
77	58.9	23.0	42.6#

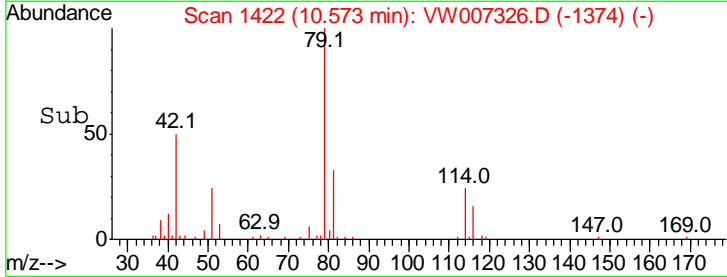
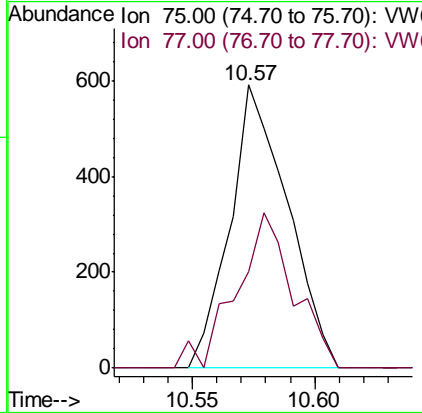
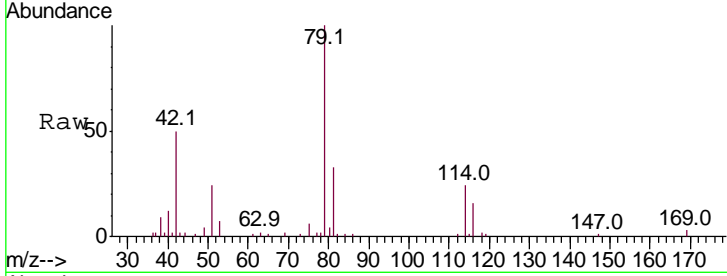




#45
 trans-1,3-Dichloropropene
 Concen: 0.806 ug/L
 RT: 10.57 min Scan# 1422
 Delta R.T. -0.04 min
 Lab File: VW007326.D
 Acq: 08 Dec 2018 00:00

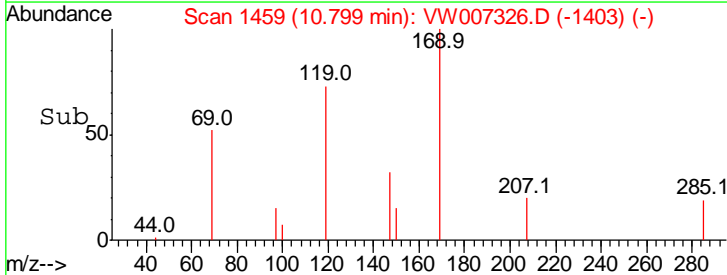
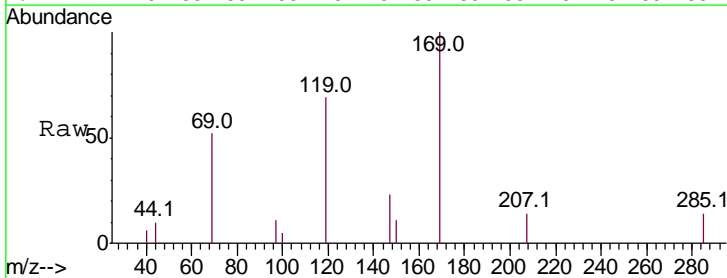
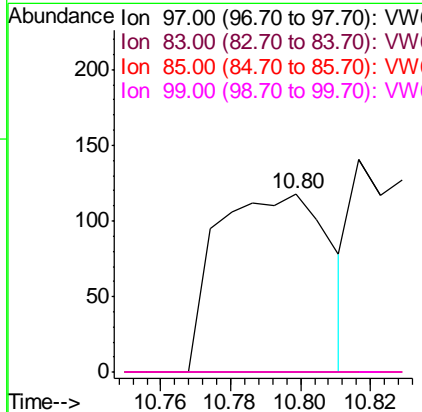
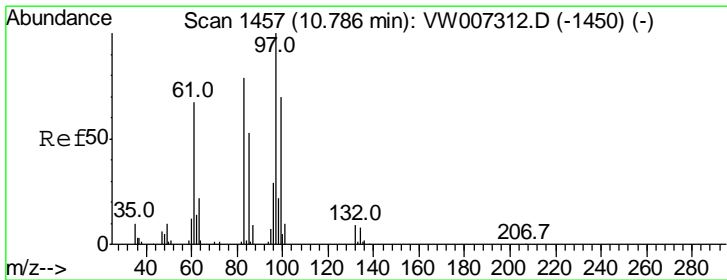
Instrument : MSVOA_W
 ClientSampled : F9F22

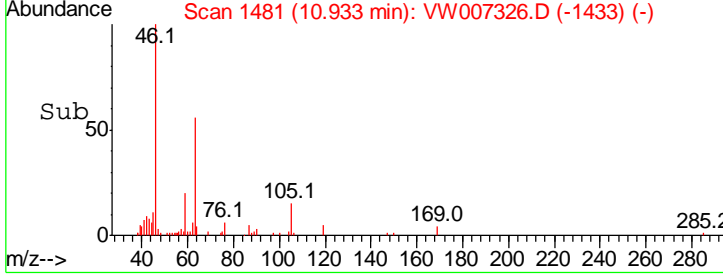
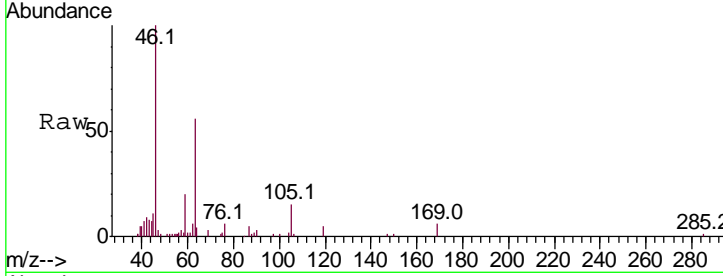
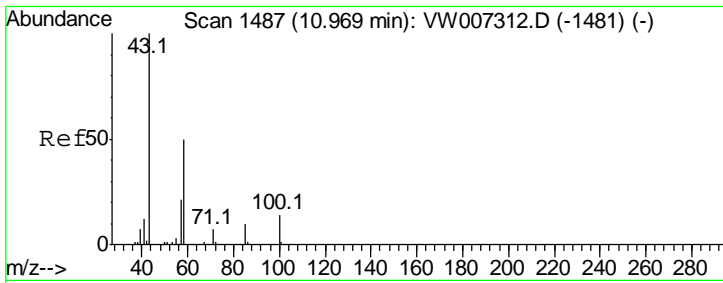
Tgt Ion	Resp	Lower	Upper
75	100		
77	33.8	22.6	42.0



#46
 1,1,2-Trichloroethane
 Concen: 0.391 ug/L
 RT: 10.80 min Scan# 1459
 Delta R.T. 0.01 min
 Lab File: VW007326.D
 Acq: 08 Dec 2018 00:00

Tgt Ion	Resp	Lower	Upper
97	100		
83	0.0	61.2	113.8#
85	0.0	42.5	78.9#
99	0.0	45.7	84.9#





#49
 2-Hexanone
 Concen: 4.853 ug/L
 RT: 10.93 min Scan# 1481
 Delta R.T. -0.04 min
 Lab File: VW007326.D
 Acq: 08 Dec 2018 00:00

Instrument : MSVOA_W
 ClientSampled : F9F22

Tot Ion: 43 Resp: 2204

Ion	Ratio	Lower	Upper
43	100		
58	21.6	47.2	70.8#
57	20.0	17.6	26.4
100	5.0	12.2	18.2#

