

Data Path : Z:\voasrv\HPCHEM1\MSVOA_W\Data\VW120721\
 Data File : VW021203.D
 Acq On : 07 Dec 2021 14:41
 Operator : SY/VA
 Sample : M4888-10RE
 Misc : 5.70g/10.0mL/MSVOA_W/SOIL
 ALS Vial : 1 Sample Multiplier: 1

Instrument :
 MSVOA_W
 ClientSampleId :

Quant Time: Dec 08 02:49:47 2021
 Quant Method : Z:\voasrv\HPCHEM1\MSVOA_W\Method\SFAMWLM120321SMA.M
 Quant Title : SFAM01.0
 QLast Update : Wed Dec 08 02:47:46 2021
 Response via : Initial Calibration

Compound	R.T.	QIon	Response	Conc	Units	Dev(Min)

Internal Standards						
1) 1,4-Difluorobenzene	8.841	114	66122	25.000	ug/L	# 0.00
28) Chlorobenzene-d5	11.628	117	47914	25.000	ug/L	0.00
58) 1,4-Dichlorobenzene-d4	13.554	152	11496	25.000	ug/L	0.00
System Monitoring Compounds						
4) Vinyl Chloride-d3	2.343	65	32881	35.692	ug/L	-0.01
Spiked Amount	25.000	Range 30 - 150	Recovery	=	142.760%	
7) Chloroethane-d5	2.879	69	21292	34.525	ug/L	0.00
Spiked Amount	25.000	Range 30 - 150	Recovery	=	138.120%	
11) 1,1-Dichloroethene-d2	4.013	63	33025	22.440	ug/L	0.00
Spiked Amount	25.000	Range 45 - 110	Recovery	=	89.760%	
21) 2-Butanone-d5	7.092	46	10454	49.749	ug/L	0.01
Spiked Amount	50.000	Range 20 - 135	Recovery	=	99.500%	
24) Chloroform-d	7.647	84	46497	28.079	ug/L	0.00
Spiked Amount	25.000	Range 40 - 150	Recovery	=	112.320%	
26) 1,2-Dichloroethane-d4	8.305	65	24140	26.647	ug/L	0.00
Spiked Amount	25.000	Range 70 - 130	Recovery	=	106.600%	
32) Benzene-d6	8.274	84	88326	36.053	ug/L	0.00
Spiked Amount	25.000	Range 20 - 135	Recovery	=	144.200%#	
36) 1,2-Dichloropropane-d6	9.274	67	25101	36.869	ug/L	0.00
Spiked Amount	25.000	Range 70 - 120	Recovery	=	147.480%#	
41) Toluene-d8	10.323	98	75010	29.860	ug/L	0.00
Spiked Amount	25.000	Range 30 - 130	Recovery	=	119.440%	
43) trans-1,3-Dichloroprop...	10.579	79	6646	21.498	ug/L	0.00
Spiked Amount	25.000	Range 30 - 135	Recovery	=	86.000%	
47) 2-Hexanone-d5	10.926	63	7212	55.367	ug/L	0.00
Spiked Amount	50.000	Range 20 - 135	Recovery	=	110.740%	
56) 1,1,2,2-Tetrachloroeth...	12.688	84	16344	25.949	ug/L	0.00
Spiked Amount	25.000	Range 45 - 120	Recovery	=	103.800%	
66) 1,2-Dichlorobenzene-d4	13.853	152	10801	26.222	ug/L	0.00
Spiked Amount	25.000	Range 75 - 120	Recovery	=	104.880%	

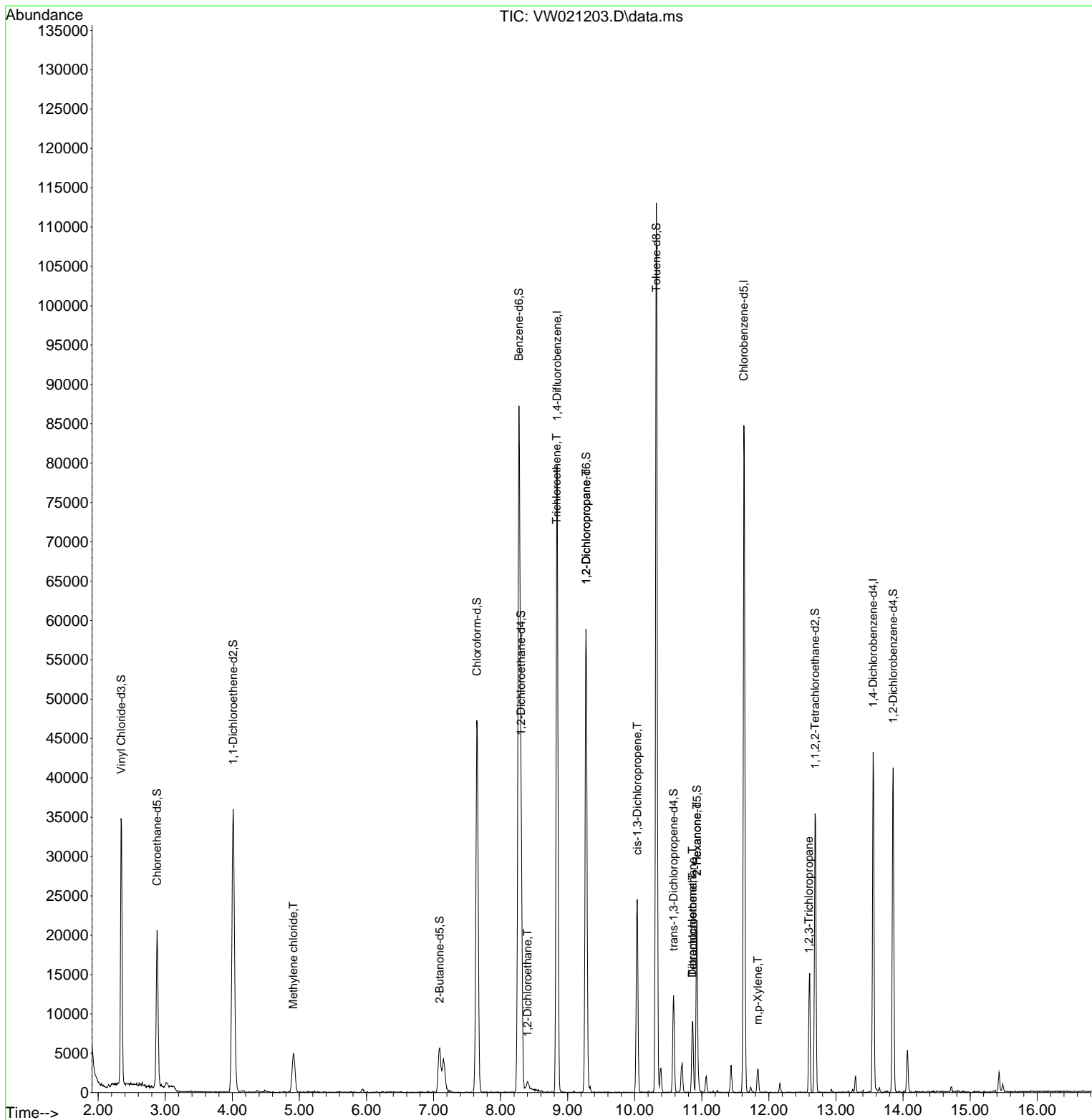
Target Compounds						Qvalue
16) Methylene chloride	4.909	84	3961	3.802	ug/L	81
27) 1,2-Dichloroethane	8.402	62	796	0.748	ug/L #	77
34) Trichloroethene	8.835	95	2017	2.683	ug/L #	5
37) 1,2-Dichloropropane	9.274	63	3148	5.112	ug/L #	88
39) cis-1,3-Dichloropropene	10.036	75	789	0.792	ug/L #	61
46) Tetrachloroethene	10.865	164	2166	3.147	ug/L	96
48) 2-Hexanone	10.926	43	1030	3.403	ug/L #	60
49) Dibromochloromethane	10.859	129	1863	2.887	ug/L #	10
53) m,p-Xylene	11.835	106	1108	0.764	ug/L	82
61) 1,2,3-Trichloropropane	12.597	75	155	0.805	ug/L #	40

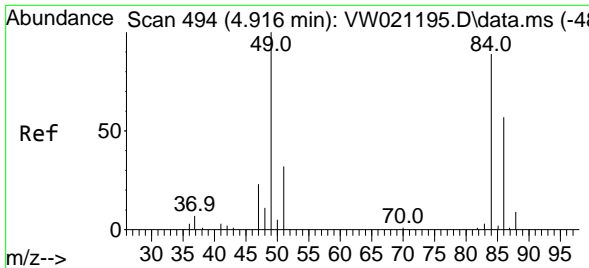
(#) = qualifier out of range (m) = manual integration (+) = signals summed

Data Path : Z:\voasrv\HPCHEM1\MSVOA_W\Data\VW120721\
 Data File : VW021203.D
 Acq On : 07 Dec 2021 14:41
 Operator : SY/VA
 Sample : M4888-10RE
 Misc : 5.70g/10.0mL/MSVOA_W/SOIL
 ALS Vial : 1 Sample Multiplier: 1

Instrument :
 MSVOA_W
 ClientSampleId :

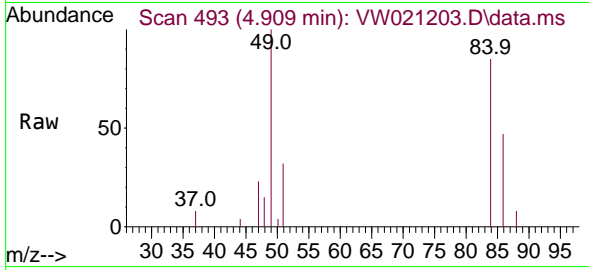
Quant Time: Dec 08 02:49:47 2021
 Quant Method : Z:\voasrv\HPCHEM1\MSVOA_W\Method\SFAMWLM120321SMA.M
 Quant Title : SFAM01.0
 QLast Update : Wed Dec 08 02:47:46 2021
 Response via : Initial Calibration



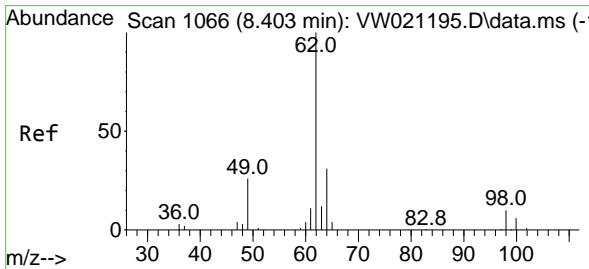
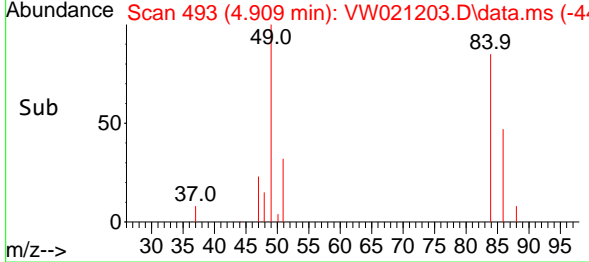
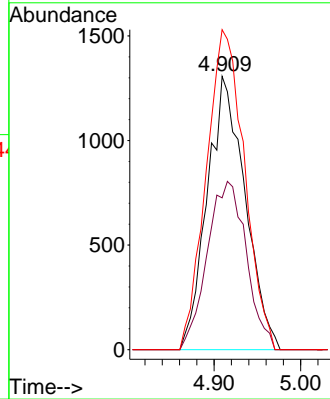


#16
 Methylene chloride
 Concen: 3.802 ug/L
 RT: 4.909 min Scan# 493
 Delta R.T. -0.006 min
 Lab File: VW021203.D
 Acq: 07 Dec 2021 14:41

Instrument :
 MSVOA_W
 ClientSampleId :

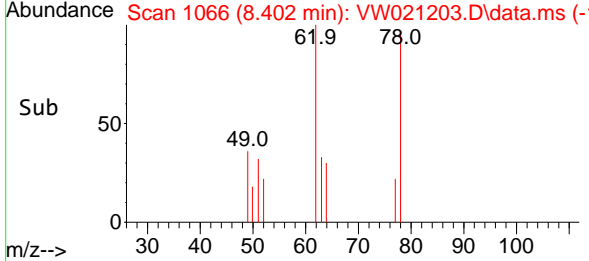
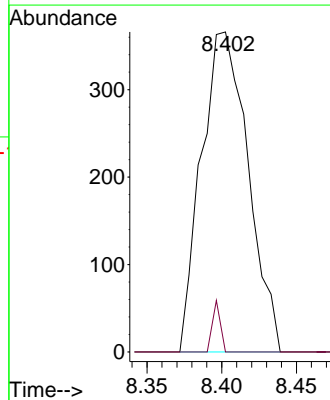
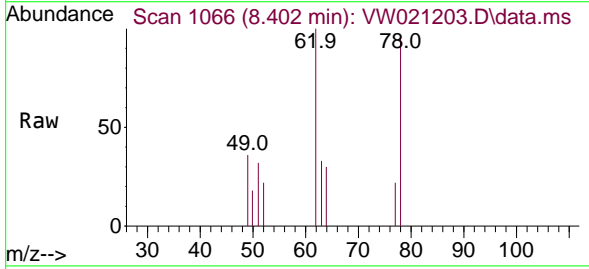


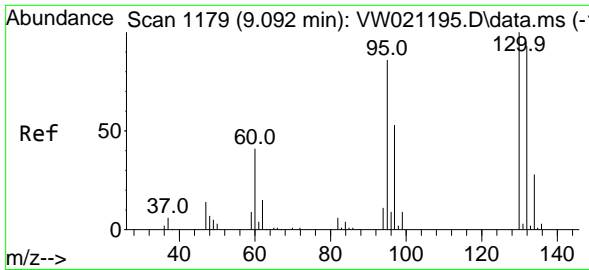
Tgt Ion: 84 Resp: 3961
 Ion Ratio Lower Upper
 84 100
 86 55.5 45.5 84.5
 49 117.1 100.5 186.7



#27
 1,2-Dichloroethane
 Concen: 0.748 ug/L
 RT: 8.402 min Scan# 1066
 Delta R.T. -0.000 min
 Lab File: VW021203.D
 Acq: 07 Dec 2021 14:41

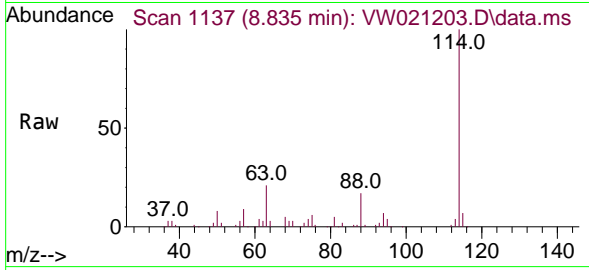
Tgt Ion: 62 Resp: 796
 Ion Ratio Lower Upper
 62 100
 98 0.0 6.5 9.7#



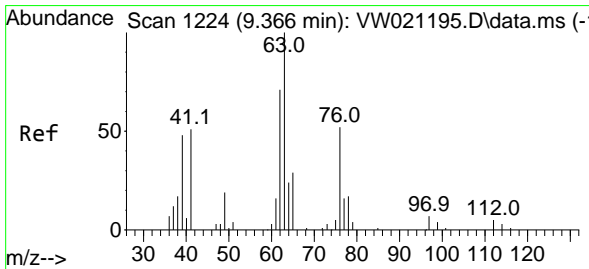
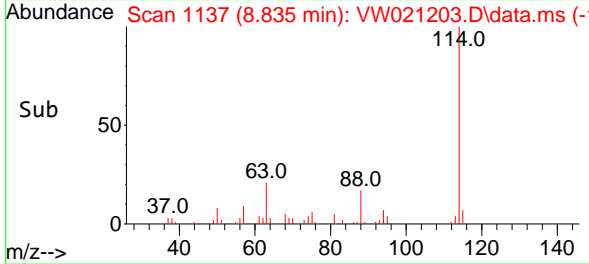
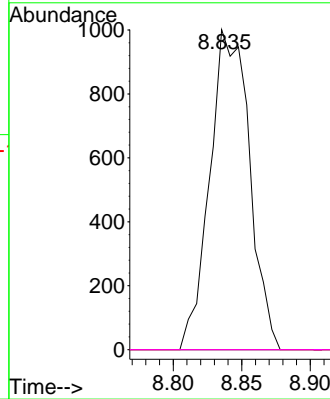


#34
 Trichloroethene
 Concen: 2.683 ug/L
 RT: 8.835 min Scan# 1179
 Delta R.T. -0.256 min
 Lab File: VW021203.D
 Acq: 07 Dec 2021 14:41

Instrument : MSVOA_W
 ClientSampleId :

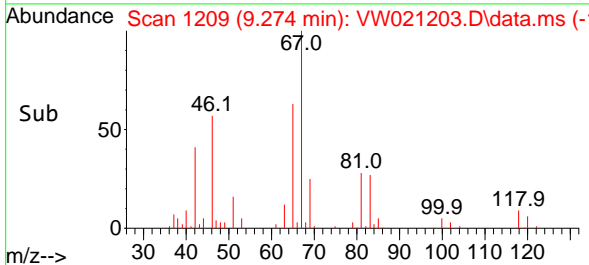
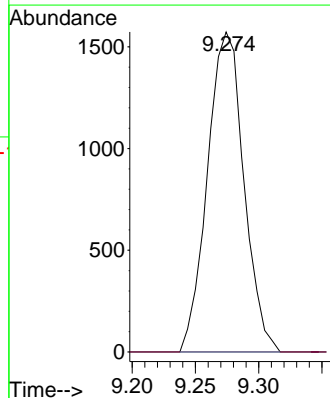
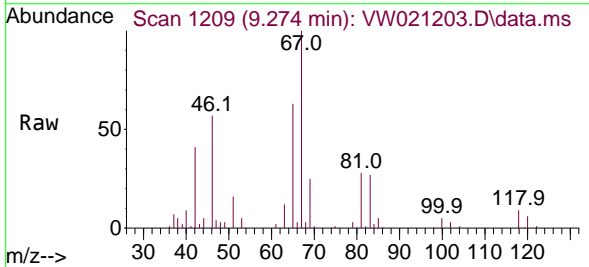


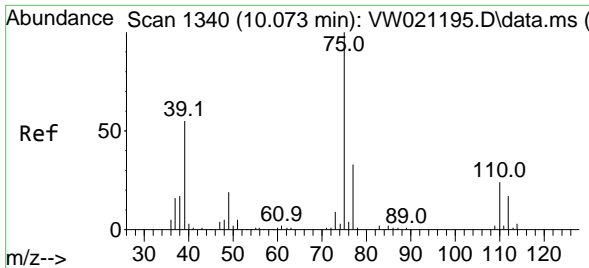
Tgt Ion: 95 Resp: 2017
 Ion Ratio Lower Upper
 95 100
 97 0.0 47.0 87.2#
 132 0.0 65.5 121.6#
 130 0.0 69.4 128.8#



#37
 1,2-Dichloropropane
 Concen: 5.112 ug/L
 RT: 9.274 min Scan# 1209
 Delta R.T. -0.092 min
 Lab File: VW021203.D
 Acq: 07 Dec 2021 14:41

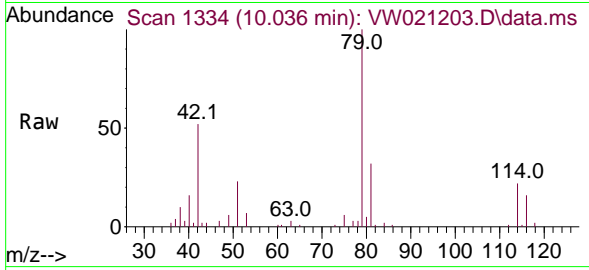
Tgt Ion: 63 Resp: 3148
 Ion Ratio Lower Upper
 63 100
 112 0.0 3.2 4.8#



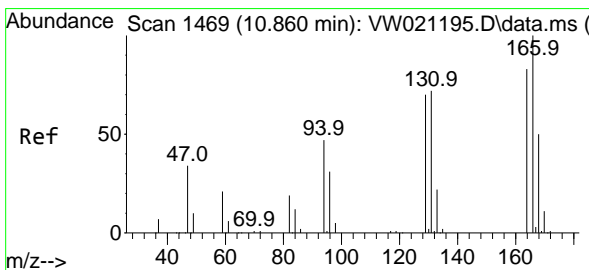
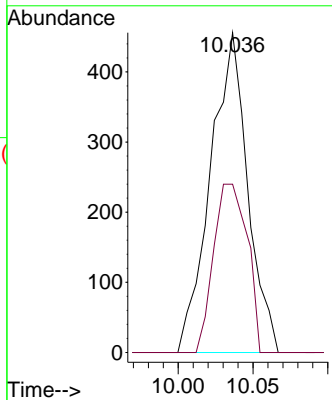
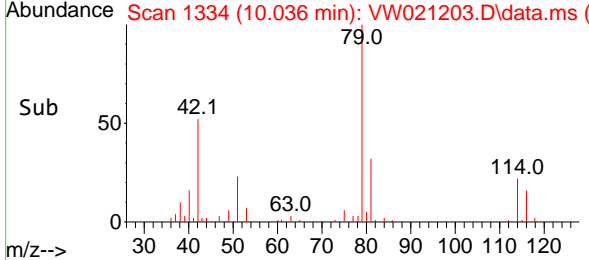


#39
 cis-1,3-Dichloropropene
 Concen: 0.792 ug/L
 RT: 10.036 min Scan# 11
 Delta R.T. -0.037 min
 Lab File: VW021203.D
 Acq: 07 Dec 2021 14:41

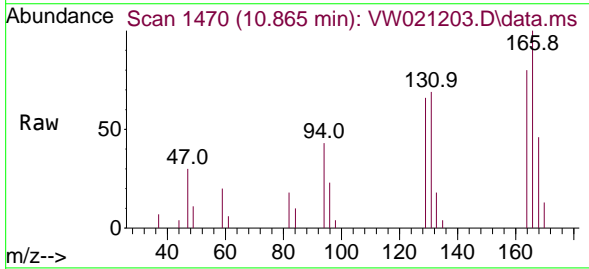
Instrument :
 MSVOA_W
 ClientSampleId :



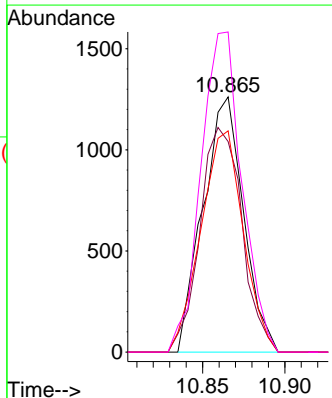
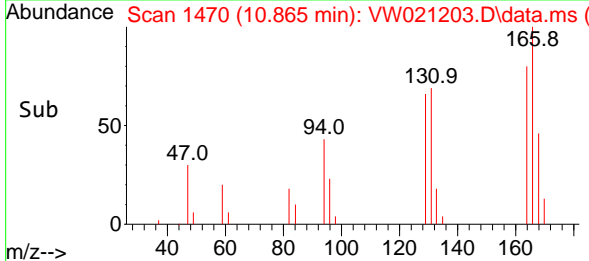
Tgt Ion: 75 Resp: 789
 Ion Ratio Lower Upper
 75 100
 77 52.6 21.8 40.6#

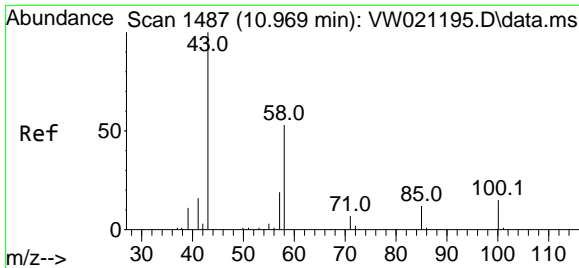


#46
 Tetrachloroethene
 Concen: 3.147 ug/L
 RT: 10.865 min Scan# 1470
 Delta R.T. 0.006 min
 Lab File: VW021203.D
 Acq: 07 Dec 2021 14:41



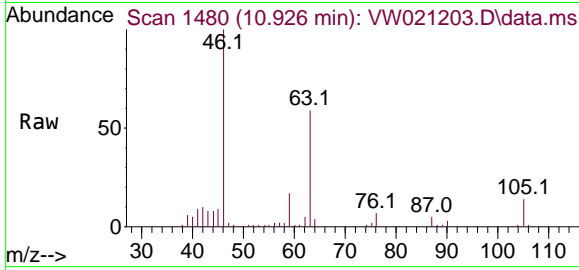
Tgt Ion:164 Resp: 2166
 Ion Ratio Lower Upper
 164 100
 129 82.5 65.5 121.7
 131 86.7 59.7 110.9
 166 125.4 88.7 164.7





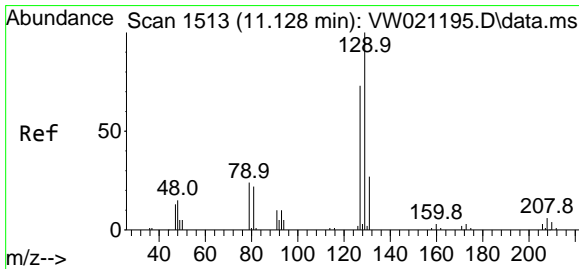
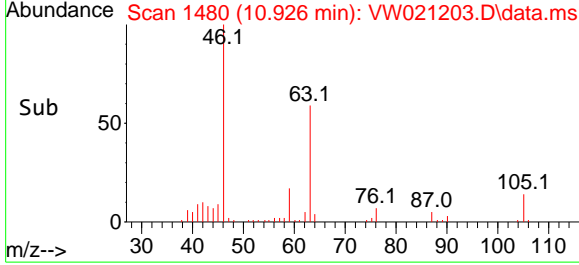
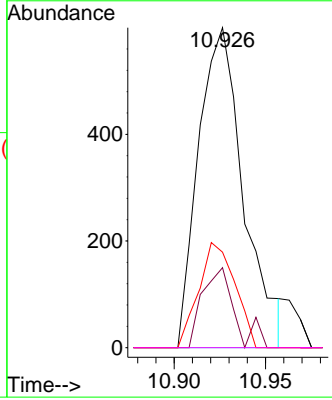
#48
 2-Hexanone
 Concen: 3.403 ug/L
 RT: 10.926 min Scan# 1480
 Delta R.T. -0.043 min
 Lab File: VW021203.D
 Acq: 07 Dec 2021 14:41

Instrument : MSVOA_W
 ClientSampleId :



Tgt Ion: 43 Resp: 1030

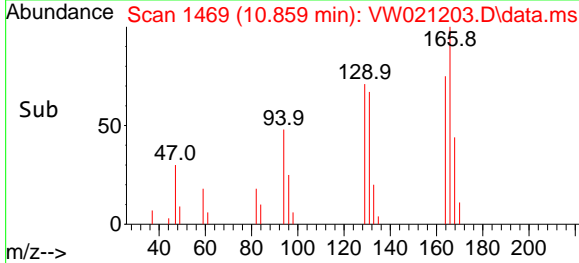
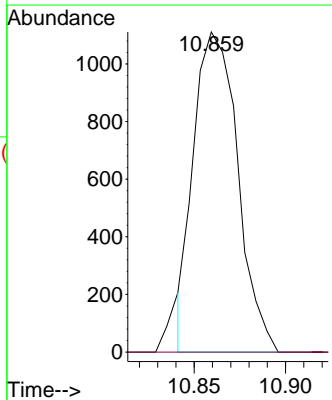
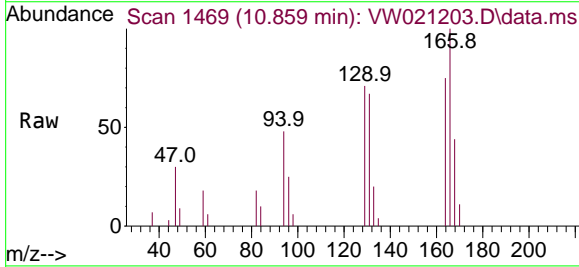
Ion	Ratio	Lower	Upper
43	100		
58	15.9	40.2	60.2#
57	26.5	14.3	21.5#
100	0.0	8.0	12.0#

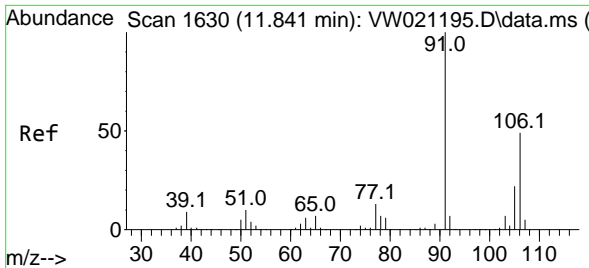


#49
 Dibromochloromethane
 Concen: 2.887 ug/L
 RT: 10.859 min Scan# 1469
 Delta R.T. -0.268 min
 Lab File: VW021203.D
 Acq: 07 Dec 2021 14:41

Tgt Ion: 129 Resp: 1863

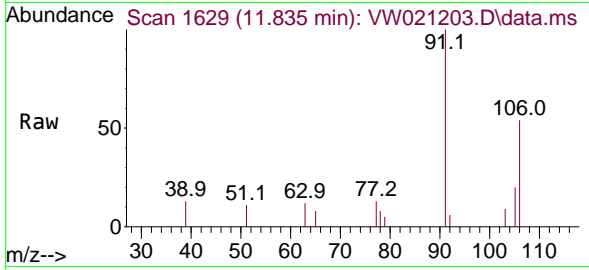
Ion	Ratio	Lower	Upper
129	100		
127	0.0	55.7	103.5#



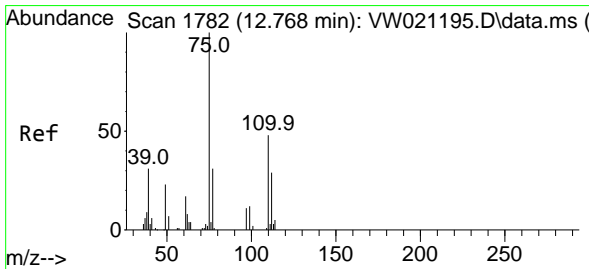
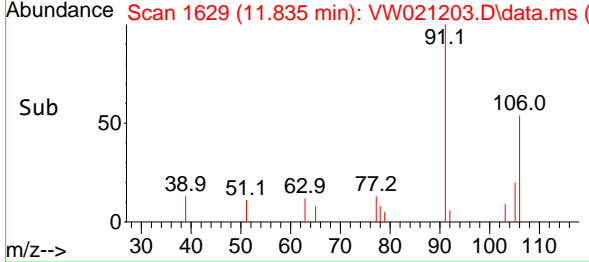
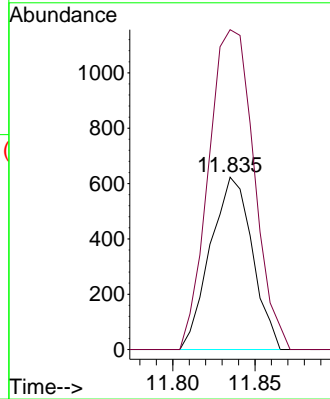


#53
 m,p-Xylene
 Concen: 0.764 ug/L
 RT: 11.835 min Scan# 1108
 Delta R.T. -0.006 min
 Lab File: VW021203.D
 Acq: 07 Dec 2021 14:41

Instrument : MSVOA_W
 ClientSampled :



Tgt Ion:106 Resp: 1108
 Ion Ratio Lower Upper
 106 100
 91 185.6 149.9 278.3



#61
 1,2,3-Trichloropropane
 Concen: 0.805 ug/L
 RT: 12.597 min Scan# 1754
 Delta R.T. -0.171 min
 Lab File: VW021203.D
 Acq: 07 Dec 2021 14:41

Tgt Ion: 75 Resp: 155
 Ion Ratio Lower Upper
 75 100
 77 0.0 25.8 38.8#
 110 0.0 29.0 43.4#

