

Data Path : Z:\voasrv\HPCHEM1\MSVOA\_W\Data\VW120721\  
 Data File : VW021210.D  
 Acq On : 07 Dec 2021 17:29  
 Operator : SY/VA  
 Sample : VIBLK  
 Misc : 5.00g/10.0mL/MSVOA\_W/SOIL  
 ALS Vial : 1 Sample Multiplier: 1

Instrument :  
 MSVOA\_W  
 ClientSampleId :

Quant Time: Dec 08 02:51:31 2021  
 Quant Method : Z:\voasrv\HPCHEM1\MSVOA\_W\Method\SFAMWLM120321SMA.M  
 Quant Title : SFAM01.0  
 QLast Update : Wed Dec 08 02:47:46 2021  
 Response via : Initial Calibration

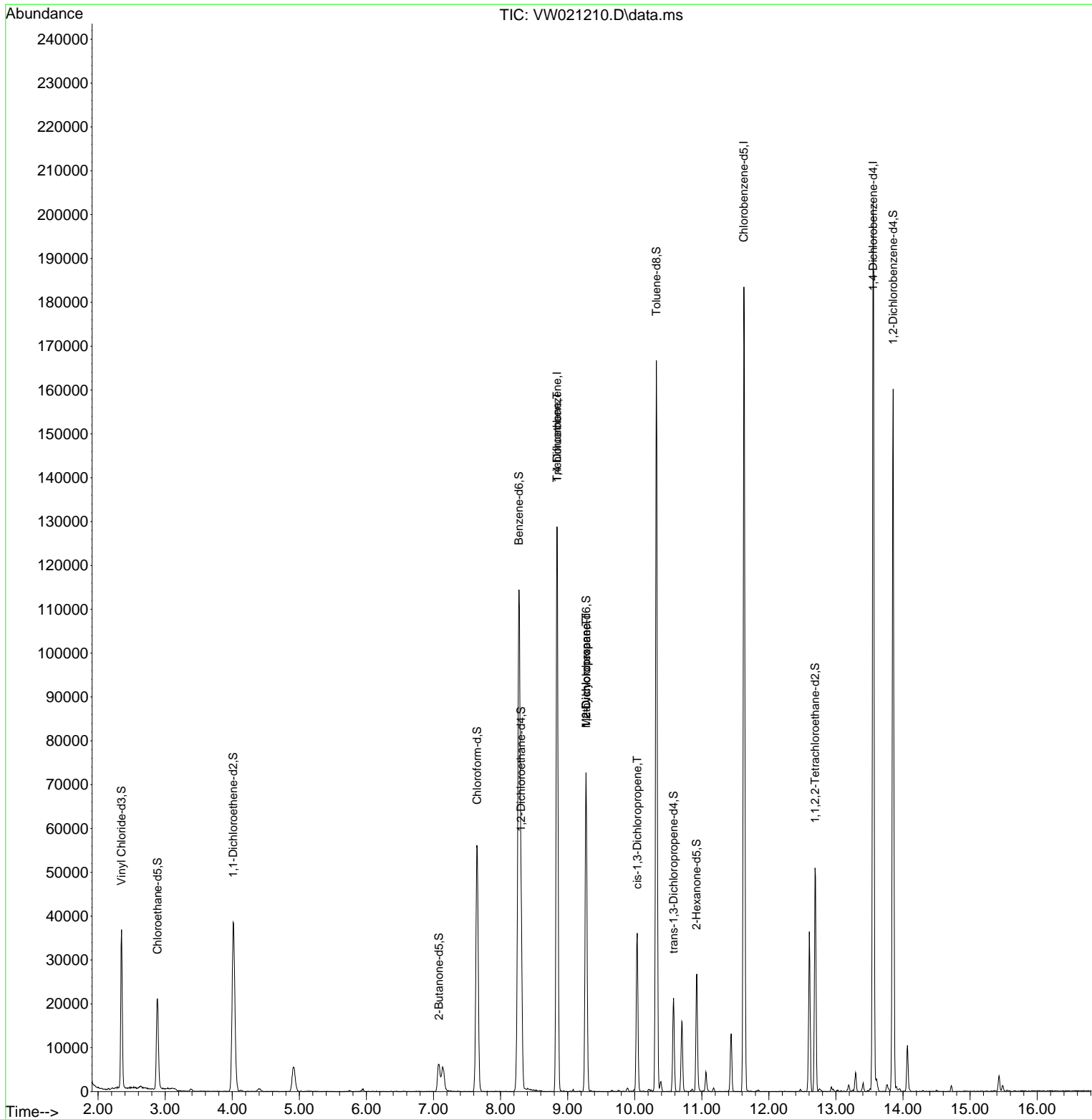
Compound	R.T.	QIon	Response	Conc	Units	Dev(Min)
Internal Standards						
1) 1,4-Difluorobenzene	8.842	114	111488	25.000	ug/L	# 0.00
28) Chlorobenzene-d5	11.628	117	102104	25.000	ug/L	0.00
58) 1,4-Dichlorobenzene-d4	13.554	152	53730	25.000	ug/L	0.00
System Monitoring Compounds						
4) Vinyl Chloride-d3	2.349	65	34237	22.041	ug/L	0.00
Spiked Amount	25.000	Range 30 - 150	Recovery =	88.160%		
7) Chloroethane-d5	2.885	69	24808	23.858	ug/L	0.00
Spiked Amount	25.000	Range 30 - 150	Recovery =	95.440%		
11) 1,1-Dichloroethene-d2	4.013	63	35645	14.364	ug/L	0.00
Spiked Amount	25.000	Range 45 - 110	Recovery =	57.440%		
21) 2-Butanone-d5	7.080	46	11575	32.670	ug/L	0.00
Spiked Amount	50.000	Range 20 - 135	Recovery =	65.340%		
24) Chloroform-d	7.653	84	55764	19.972	ug/L	0.00
Spiked Amount	25.000	Range 40 - 150	Recovery =	79.880%		
26) 1,2-Dichloroethane-d4	8.305	65	29059	19.024	ug/L	0.00
Spiked Amount	25.000	Range 70 - 130	Recovery =	76.080%		
32) Benzene-d6	8.275	84	110806	21.224	ug/L	0.00
Spiked Amount	25.000	Range 20 - 135	Recovery =	84.880%		
36) 1,2-Dichloropropane-d6	9.274	67	30255	20.854	ug/L	0.00
Spiked Amount	25.000	Range 70 - 120	Recovery =	83.400%		
41) Toluene-d8	10.323	98	109240	20.407	ug/L	0.00
Spiked Amount	25.000	Range 30 - 130	Recovery =	81.640%		
43) trans-1,3-Dichloroprop...	10.579	79	10906	16.555	ug/L	0.00
Spiked Amount	25.000	Range 30 - 135	Recovery =	66.240%		
47) 2-Hexanone-d5	10.920	63	8917	32.124	ug/L	0.00
Spiked Amount	50.000	Range 20 - 135	Recovery =	64.240%		
56) 1,1,2,2-Tetrachloroeth...	12.688	84	22478	16.747	ug/L	0.00
Spiked Amount	25.000	Range 45 - 120	Recovery =	67.000%		
66) 1,2-Dichlorobenzene-d4	13.853	152	41058	21.327	ug/L	0.00
Spiked Amount	25.000	Range 75 - 120	Recovery =	85.320%		
Target Compounds						
34) Trichloroethene	8.842	95	3306	2.064	ug/L #	5
35) Methylcyclohexane	9.274	83	7995	2.965	ug/L #	14
37) 1,2-Dichloropropane	9.274	63	3989	3.040	ug/L #	88
39) cis-1,3-Dichloropropene	10.036	75	1125	0.530	ug/L #	57

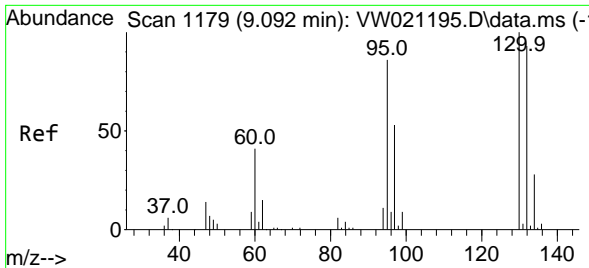
(#) = qualifier out of range (m) = manual integration (+) = signals summed

Data Path : Z:\voasrv\HPCHEM1\MSVOA\_W\Data\VW120721\  
 Data File : VW021210.D  
 Acq On : 07 Dec 2021 17:29  
 Operator : SY/VA  
 Sample : VIBLK  
 Misc : 5.00g/10.0mL/MSVOA\_W/SOIL  
 ALS Vial : 1 Sample Multiplier: 1

Instrument :  
 MSVOA\_W  
 ClientSampleId :

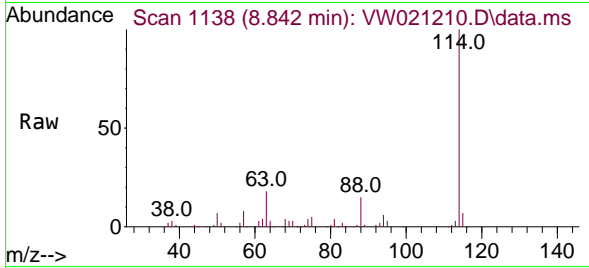
Quant Time: Dec 08 02:51:31 2021  
 Quant Method : Z:\voasrv\HPCHEM1\MSVOA\_W\Method\SFAMWLM120321SMA.M  
 Quant Title : SFAM01.0  
 QLast Update : Wed Dec 08 02:47:46 2021  
 Response via : Initial Calibration





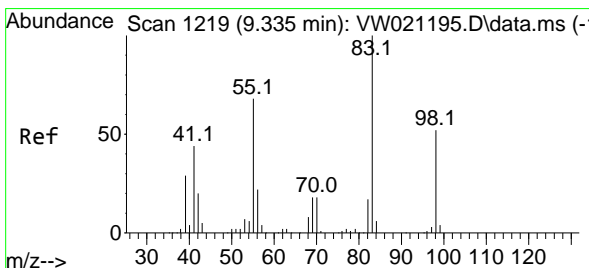
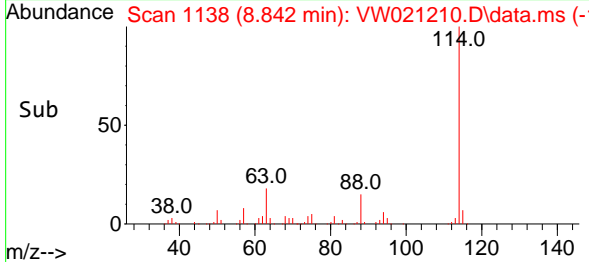
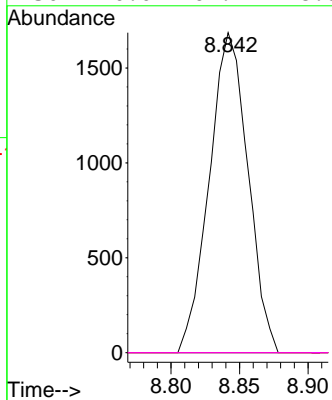
#34  
 Trichloroethene  
 Concen: 2.064 ug/L  
 RT: 8.842 min Scan# 1179  
 Delta R.T. -0.250 min  
 Lab File: VW021210.D  
 Acq: 07 Dec 2021 17:29

Instrument :  
 MSVOA\_W  
 ClientSampleId :



Tgt Ion: 95 Resp: 3306

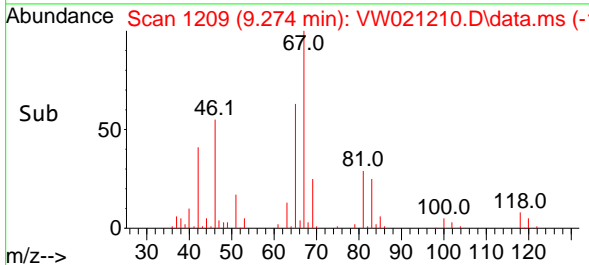
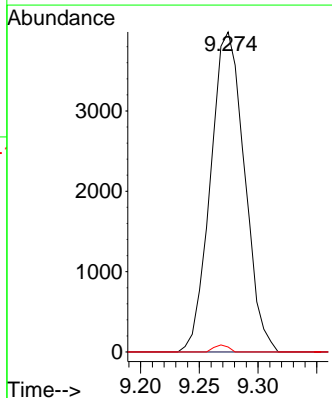
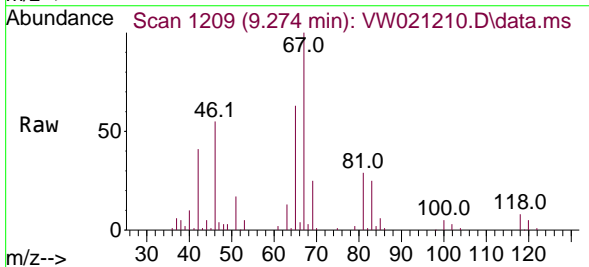
Ion	Ratio	Lower	Upper
95	100		
97	0.0	47.0	87.2#
132	0.0	65.5	121.6#
130	0.0	69.4	128.8#

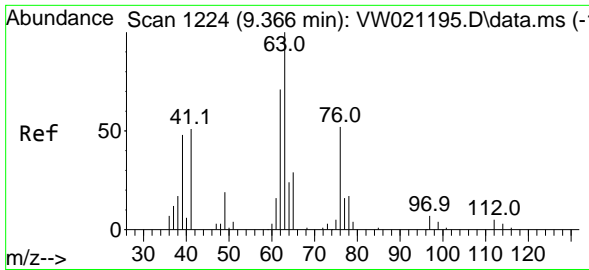


#35  
 Methylcyclohexane  
 Concen: 2.965 ug/L  
 RT: 9.274 min Scan# 1209  
 Delta R.T. -0.061 min  
 Lab File: VW021210.D  
 Acq: 07 Dec 2021 17:29

Tgt Ion: 83 Resp: 7995

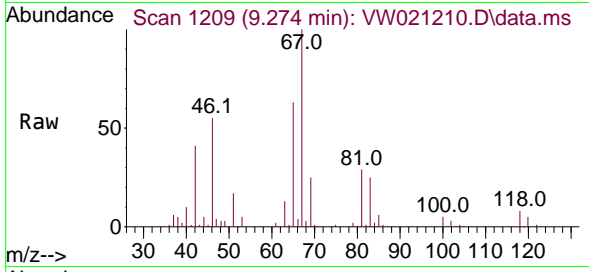
Ion	Ratio	Lower	Upper
83	100		
55	0.0	70.8	106.2#
98	1.0	37.7	56.5#



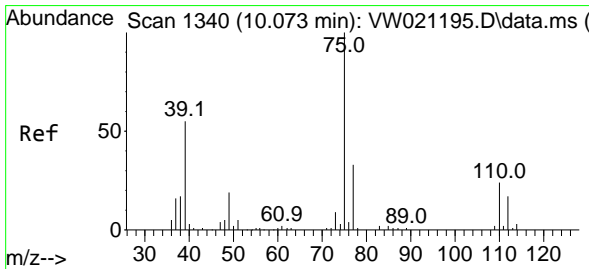
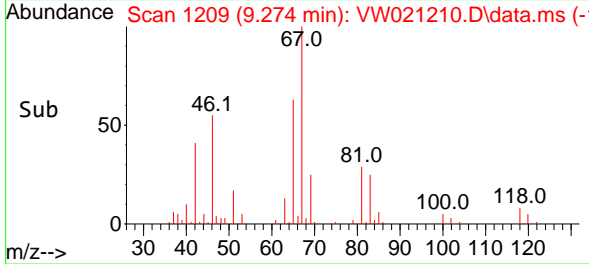
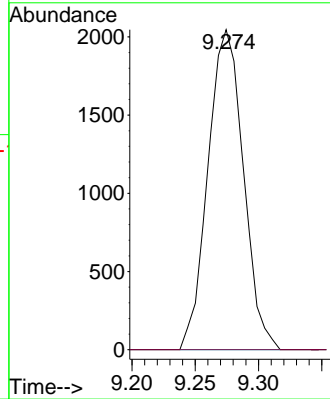


#37  
 1,2-Dichloropropane  
 Concen: 3.040 ug/L  
 RT: 9.274 min Scan# 11  
 Delta R.T. -0.092 min  
 Lab File: VW021210.D  
 Acq: 07 Dec 2021 17:29

Instrument :  
 MSVOA\_W  
 ClientSampled :



Tgt Ion: 63 Resp: 3989  
 Ion Ratio Lower Upper  
 63 100  
 112 0.0 3.2 4.8#



#39  
 cis-1,3-Dichloropropene  
 Concen: 0.530 ug/L  
 RT: 10.036 min Scan# 1334  
 Delta R.T. -0.037 min  
 Lab File: VW021210.D  
 Acq: 07 Dec 2021 17:29

Tgt Ion: 75 Resp: 1125  
 Ion Ratio Lower Upper  
 75 100  
 77 54.7 21.8 40.6#

