

Data Path : Z:\VOASRV\HPCHEM1\MSVOA W\DATA\VW120919\
 Data File : VW014267.D
 Acq On : 09 Dec 2019 16:18
 Operator : SY/VA
 Sample : K6171-12
 Misc : 5.20G/10ML/MSVOA W/SOIL
 ALS Vial : 1 Sample Multiplier: 1

Instrument :
 MSVOA_W
 ClientSampleId :
 C0BW1

Integration Parameters: LSCINT.P

Integrator: RTE
 Smoothing : OFF Filtering: 5
 Sampling : 1 Min Area: 0 % of largest Peak
 Start Thrs: 0.2 Max Peaks: 100
 Stop Thrs : 0 Peak Location: TOP

If leading or trailing edge < 100 prefer < Baseline drop else tangent >
 Peak separation: 5

Method : Z:\VOASRV\HPCHEM1\MSVOA_W\METHOD\SOM2WLM120519S.M
 Title : VOC Analysis

Signal : TIC

peak #	R.T. min	first scan	max scan	last scan	PK TY	peak height	corr. area	corr. % max.	% of total
1	1.965	5	10	18	rVB4	12212	27106	0.58%	0.084%
2	2.154	36	41	48	rBV2	26960	60528	1.29%	0.187%
3	2.349	67	73	86	rVB	392323	726349	15.48%	2.247%
4	2.885	154	161	177	rVB	245413	617268	13.15%	1.910%
5	3.257	220	222	223	rBV3	1112	849	0.02%	0.003%
6	3.385	241	243	245	rVB2	3177	2601	0.06%	0.008%
7	3.465	253	256	257	rBV2	902	879	0.02%	0.003%
8	3.532	263	267	268	rBV4	2148	2732	0.06%	0.008%
9	3.721	295	298	302	rVB5	1122	1351	0.03%	0.004%
10	3.836	315	317	319	rBV2	1513	1137	0.02%	0.004%
11	4.013	334	346	360	rBV	528281	1710608	36.46%	5.293%
12	4.391	397	408	415	rBV4	5304	17429	0.37%	0.054%
13	4.611	441	444	445	rBV2	1110	1039	0.02%	0.003%
14	4.684	454	456	459	rVB2	1171	786	0.02%	0.002%
15	4.775	468	471	472	rBV3	714	763	0.02%	0.002%
16	4.909	482	493	506	rBV4	20040	79039	1.68%	0.245%
17	5.147	529	532	537	rBV6	1599	2975	0.06%	0.009%
18	5.257	548	550	554	rVV2	717	700	0.01%	0.002%
19	5.354	564	566	569	rBV3	699	789	0.02%	0.002%
20	5.580	600	603	606	rVV4	634	946	0.02%	0.003%
21	5.665	613	617	620	rBV3	895	1009	0.02%	0.003%
22	5.714	620	625	627	rBV3	973	1067	0.02%	0.003%
23	5.836	644	645	648	rBV	839	787	0.02%	0.002%
24	5.928	650	660	669	rBV4	9802	31642	0.67%	0.098%
25	6.123	690	692	695	rBV4	1073	886	0.02%	0.003%
26	6.159	696	698	700	rBV2	774	702	0.01%	0.002%
27	6.324	723	725	730	rVB3	1012	1442	0.03%	0.004%
28	6.366	730	732	734	rBV	589	743	0.02%	0.002%
29	6.434	741	743	746	rBV4	1188	1258	0.03%	0.004%
30	6.513	753	756	758	rBV2	770	983	0.02%	0.003%
31	6.671	781	782	787	rBV3	882	1222	0.03%	0.004%
32	6.952	826	828	831	rVB4	797	721	0.02%	0.002%
33	6.982	831	833	837	rBV3	617	1022	0.02%	0.003%
34	7.074	837	848	853	rBV	105216	297880	6.35%	0.922%

Data Path : Z:\VOASRV\HPCHEM1\MSVOA W\DATA\VW120919\
 Data File : VW014267.D
 Acq On : 09 Dec 2019 16:18
 Operator : SY/VA
 Sample : K6171-12
 Misc : 5.20G/10ML/MSVOA W/SOIL
 ALS Vial : 1 Sample Multiplier: 1

Instrument :
 MSVOA_W
 ClientSampleId :
 C0BW1

Integration Parameters: LSCINT.P

Integrator: RTE
 Smoothing : OFF
 Sampling : 1
 Start Thrs: 0.2
 Stop Thrs : 0

Filtering: 5
 Min Area: 0 % of largest Peak
 Max Peaks: 100
 Peak Location: TOP

If leading or trailing edge < 100 prefer < Baseline drop else tangent >
 Peak separation: 5

Method : Z:\VOASRV\HPCHEM1\MSVOA_W\METHOD\SOM2WLM120519S.M
 Title : VOC Analysis

35	7.135	853	858	874	rVB	131001	369794	7.88%	1.144%
36	7.360	891	895	898	rVB5	919	1264	0.03%	0.004%
37	7.525	918	922	923	rBV4	3040	3780	0.08%	0.012%
38	7.647	931	942	957	rBV	768971	1894041	40.36%	5.860%
39	7.878	978	980	983	rVB3	1236	1119	0.02%	0.003%
40	7.933	983	989	990	rBV4	3344	5250	0.11%	0.016%
41	8.086	1010	1014	1015	rVB4	795	944	0.02%	0.003%
42	8.128	1019	1021	1023	rBV3	742	774	0.02%	0.002%
43	8.171	1024	1028	1031	rVB5	1282	1399	0.03%	0.004%
44	8.275	1034	1045	1063	rBV2	1606814	4692292	100.00%	14.518%
45	8.561	1088	1092	1093	rBV3	1004	1197	0.03%	0.004%
46	8.616	1100	1101	1103	rBV2	1736	1383	0.03%	0.004%
47	8.683	1108	1112	1113	rBV3	3836	4889	0.10%	0.015%
48	8.762	1122	1125	1128	rBV4	659	765	0.02%	0.002%
49	8.842	1129	1138	1152	rBV	1498984	2968305	63.26%	9.184%
50	9.037	1168	1170	1171	rBV2	2205	1467	0.03%	0.005%
51	9.067	1171	1175	1181	rVB6	4187	9418	0.20%	0.029%
52	9.189	1192	1195	1196	rBV3	760	747	0.02%	0.002%
53	9.274	1199	1209	1224	rBV	1085232	2209555	47.09%	6.836%
54	9.543	1250	1253	1254	rVB2	1269	1119	0.02%	0.003%
55	9.561	1254	1256	1258	rBV3	820	1035	0.02%	0.003%
56	9.659	1270	1272	1275	rVB3	2630	2855	0.06%	0.009%
57	9.707	1278	1280	1282	rVB3	939	736	0.02%	0.002%
58	9.756	1282	1288	1294	rBV5	7655	19369	0.41%	0.060%
59	9.829	1298	1300	1301	rVV	2810	2256	0.05%	0.007%
60	9.890	1301	1310	1317	rVB5	19077	45040	0.96%	0.139%
61	10.030	1326	1333	1342	rBV	497006	906235	19.31%	2.804%
62	10.207	1356	1362	1366	rBV2	14540	32435	0.69%	0.100%
63	10.323	1373	1381	1389	rBV	2212478	3849325	82.04%	11.910%
64	10.573	1416	1422	1433	rBV	308475	555070	11.83%	1.717%
65	10.701	1437	1443	1450	rVB	89276	155365	3.31%	0.481%
66	10.774	1451	1455	1457	rBV5	5730	8271	0.18%	0.026%
67	10.921	1473	1479	1494	rBV	435690	802350	17.10%	2.482%
68	11.061	1497	1502	1510	rVB	52092	88149	1.88%	0.273%
69	11.170	1517	1520	1526	rVB6	10031	15721	0.34%	0.049%
70	11.439	1559	1564	1573	rVB2	40245	71214	1.52%	0.220%
71	11.506	1573	1575	1576	rBV2	2816	2276	0.05%	0.007%

Data Path : Z:\VOASRV\HPCHEM1\MSVOA W\DATA\VW120919\
 Data File : VW014267.D
 Acq On : 09 Dec 2019 16:18
 Operator : SY/VA
 Sample : K6171-12
 Misc : 5.20G/10ML/MSVOA W/SOIL
 ALS Vial : 1 Sample Multiplier: 1

Instrument :
 MSVOA_W
 ClientSampleId :
 C0BW1

Integration Parameters: LSCINT.P

Integrator: RTE
 Smoothing : OFF
 Sampling : 1
 Start Thrs: 0.2
 Stop Thrs : 0

Filtering: 5
 Min Area: 0 % of largest Peak
 Max Peaks: 100
 Peak Location: TOP

If leading or trailing edge < 100 prefer < Baseline drop else tangent >
 Peak separation: 5

Method : Z:\VOASRV\HPCHEM1\MSVOA_W\METHOD\SOM2WLM120519S.M
 Title : VOC Analysis

72	11.628	1588	1595	1610	rVB	1914756	3205580	68.32%	9.918%
73	11.835	1626	1629	1639	rVB9	7984	18215	0.39%	0.056%
74	12.469	1729	1733	1737	rVB4	5439	8784	0.19%	0.027%
75	12.506	1737	1739	1741	rBV3	1439	1125	0.02%	0.003%
76	12.603	1749	1755	1761	rBV	119693	204674	4.36%	0.633%
77	12.688	1761	1769	1777	rVV	753777	1214000	25.87%	3.756%
78	12.756	1777	1780	1786	rVB6	4571	8568	0.18%	0.027%
79	12.841	1792	1794	1795	rBV2	1024	832	0.02%	0.003%
80	12.859	1795	1797	1799	rVV2	1671	1355	0.03%	0.004%
81	12.932	1804	1809	1814	rVV3	28790	44949	0.96%	0.139%
82	13.030	1822	1825	1829	rBV4	4725	6933	0.15%	0.021%
83	13.079	1830	1833	1838	rVB5	5602	7609	0.16%	0.024%
84	13.158	1843	1846	1848	rBV4	2210	2226	0.05%	0.007%
85	13.195	1848	1852	1858	rBV5	7258	15083	0.32%	0.047%
86	13.298	1863	1869	1875	rVB3	25233	44779	0.95%	0.139%
87	13.402	1880	1886	1891	rBV4	13621	24762	0.53%	0.077%
88	13.469	1891	1897	1901	rBV3	17611	33808	0.72%	0.105%
89	13.554	1905	1911	1925	rVB	1485026	2409100	51.34%	7.454%
90	13.761	1941	1945	1948	rBV4	12442	17989	0.38%	0.056%
91	13.853	1953	1960	1966	rBV	1500323	2447935	52.17%	7.574%
92	14.066	1990	1995	2004	rVB	65735	112156	2.39%	0.347%
93	14.645	2088	2090	2096	rVB6	6053	9522	0.20%	0.029%
94	14.725	2099	2103	2109	rVB6	6375	10083	0.21%	0.031%
95	14.792	2112	2114	2118	rVB4	5373	6285	0.13%	0.019%
96	15.438	2213	2220	2225	rBV	61950	105619	2.25%	0.327%
97	15.493	2226	2229	2233	rVB2	6217	8966	0.19%	0.028%
98	15.688	2256	2261	2267	rBV9	4968	11574	0.25%	0.036%
99	15.767	2271	2274	2283	rVB9	4398	11948	0.25%	0.037%
100	15.883	2291	2293	2295	rBV3	2192	2018	0.04%	0.006%

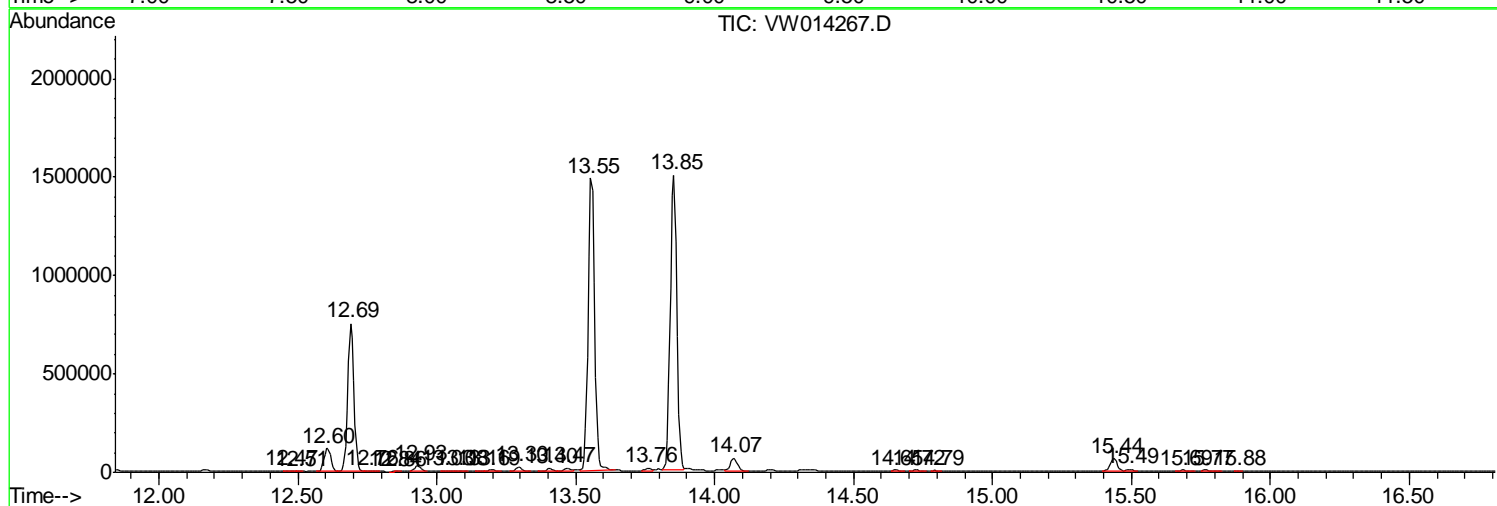
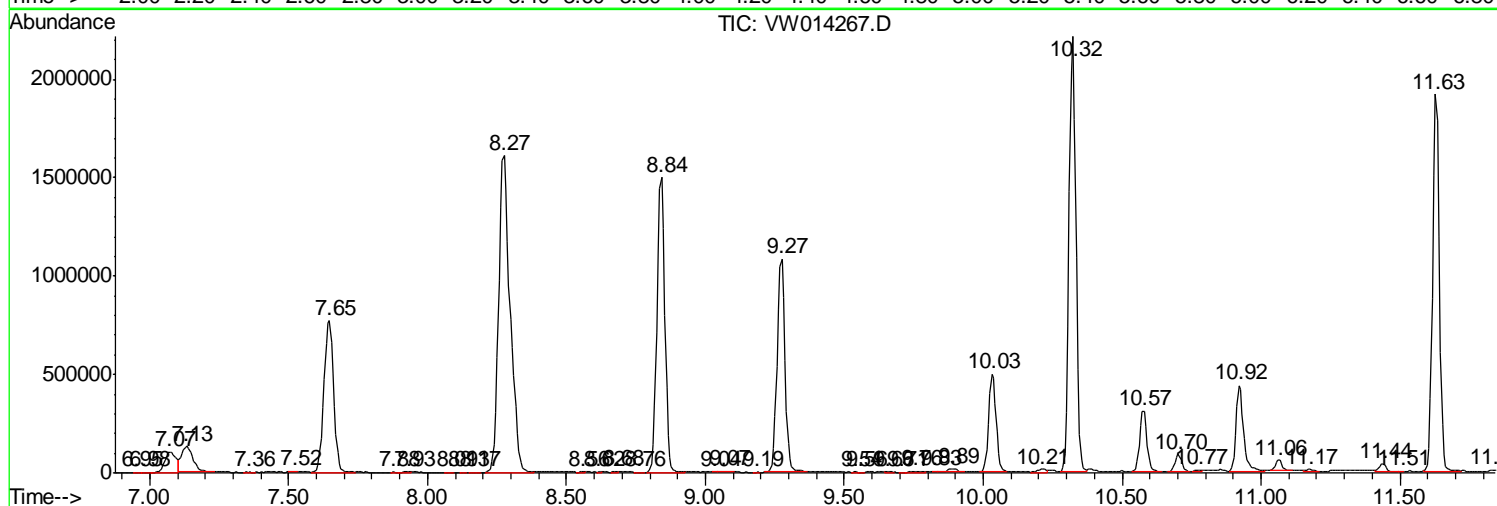
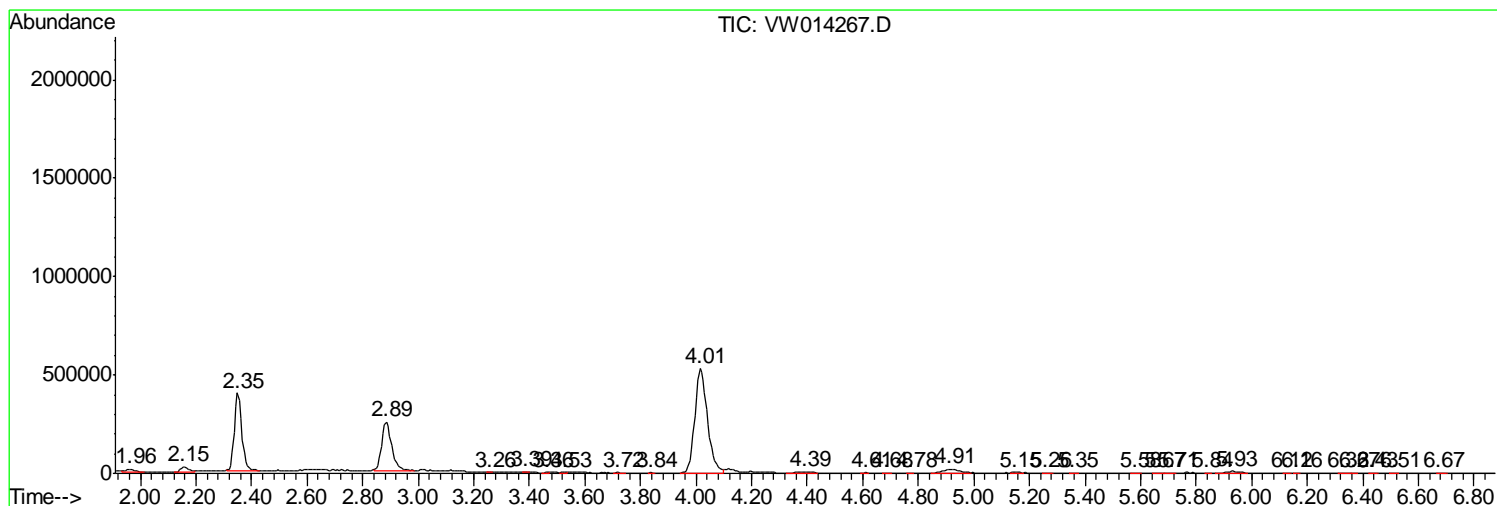
Sum of corrected areas: 32320919

Data Path : Z:\VOASRV\HPCHEM1\MSVOA W\DATA\VW120919\
 Data File : VW014267.D
 Acq On : 09 Dec 2019 16:18
 Operator : SY/VA
 Sample : K6171-12
 Misc : 5.20G/10ML/MSVOA W/SOIL
 ALS Vial : 1 Sample Multiplier: 1

Instrument :
 MSVOA_W
 ClientSampleId :
 C0BW1

Quant Method : Z:\VOASRV\HPCHEM1\MSVOA_W\METHOD\SOM2WLM120519S.M
 Quant Title : VOC Analysis

TIC Library : C:\DATABASE\NIST11.L
 TIC Integration Parameters: LSCINT.P



Data Path : Z:\VOASRV\HPCHEM1\MSVOA_W\DATA\VW120919\
Data File : VW014267.D
Acq On : 09 Dec 2019 16:18
Operator : SY/VA
Sample : K6171-12
Misc : 5.20G/10ML/MSVOA_W/SOIL
ALS Vial : 1 Sample Multiplier: 1

Instrument :
MSVOA_W
ClientSampleId :
C0BW1

Quant Method : Z:\VOASRV\HPCHEM1\MSVOA_W\METHOD\SOM2WLM120519S.M
Quant Title : VOC Analysis

TIC Library : C:\DATABASE\NIST11.L
TIC Integration Parameters: LSCINT.P

No Library Search Compounds Detected

Data Path : Z:\VOASRV\HPCHEM1\MSVOA_W\DATA\VW120919\
Data File : VW014267.D
Acq On : 09 Dec 2019 16:18
Operator : SY/VA
Sample : K6171-12
Misc : 5.20G/10ML/MSVOA_W/SOIL
ALS Vial : 1 Sample Multiplier: 1

Instrument :
MSVOA_W
ClientSampleId :
C0BW1

Quant Method : Z:\VOASRV\HPCHEM1\MSVOA_W\METHOD\SOM2WLM120519S.M
Quant Title : VOC Analysis

TIC Library : C:\DATABASE\NIST11.L
TIC Integration Parameters: LSCINT.P

TIC Top Hit name	RT	EstConc	Units	Response	--Internal Standard--			
					#	RT	Resp	Conc
