

Data Path : Z:\VOASRV\HPCHEM1\MSVOA W\DATA\VW121119\
 Data File : VW014307.D
 Acq On : 11 Dec 2019 16:47
 Operator : SY/VA
 Sample : K6238-01
 Misc : 4.77G/10ML/MSVOA W/SOIL
 ALS Vial : 1 Sample Multiplier: 1

Instrument :
 MSVOA_W
ClientSampled :
 BFPZ6

Manual Integrations
APPROVED
 apatel
 12/12/2019 4:21:16 PM

Quant Time: Dec 12 06:09:29 2019
 Quant Method : Z:\VOASRV\HPCHEM1\MSVOA_W\METHOD\SOM2WLM120519S.M
 Quant Title : VOC Analysis
 QLast Update : Thu Dec 12 04:57:07 2019
 Response via : Initial Calibration

Internal Standards	R.T.	QIon	Response	Conc	Units	Dev(Min)
1) 1,4-Difluorobenzene	8.84	114	990877	25.00	ug/L	0.00
28) Chlorobenzene-d5	11.63	117	705602	25.00	ug/L	0.00
60) 1,4-Dichlorobenzene-d4	13.56	152	160570	25.00	ug/L	0.00

System Monitoring Compounds	R.T.	QIon	Response	Conc	Units	Dev(Min)	Spiked Amount	Range	Recovery
4) Vinyl Chloride-d3	2.35	65	357152	23.80	ug/L	0.00	25.000	30 - 150	95.20%
7) Chloroethane-d5	2.89	69	306899	27.51	ug/L	0.00	25.000	30 - 150	110.04%
10) 1,1-Dichloroethene-d2	4.01	63	520074	19.62	ug/L	0.00	25.000	45 - 110	78.48%
20) 2-Butanone-d5	7.08	46	124038	31.72	ug/L	0.01	50.000	20 - 135	63.44%
24) Chloroform-d	7.64	84	652930	25.88	ug/L	0.00	25.000	40 - 150	103.52%
26) 1,2-Dichloroethane-d4	8.30	65	341304m	25.80	ug/L	0.00	25.000	70 - 130	103.20%
29) Benzene-d6	8.27	84	1333630	32.25	ug/L	0.00	25.000	20 - 135	129.00%
33) 1,2-Dichloropropane-d6	9.27	67	416063	32.70	ug/L	0.00	25.000	70 - 120	130.80%#
37) Toluene-d8	10.32	98	1060983	28.37	ug/L	0.00	25.000	30 - 130	113.48%
38) trans-1,3-Dichloropropene-	10.57	79	125806	23.57	ug/L	0.00	25.000	30 - 135	94.28%
39) 2-Hexanone-d5	10.92	63	90189	35.65	ug/L	0.00	50.000	20 - 135	71.30%
48) 1,1,2,2-Tetrachloroethane-	12.69	84	208037	20.07	ug/L	0.00	25.000	45 - 120	80.28%
61) 1,2-Dichlorobenzene-d4	13.85	152	146719	23.91	ug/L	0.00	25.000	75 - 120	95.64%

Target Compounds	R.T.	QIon	Response	Conc	Units	Ovalue
13) Acetone	4.12	43	632725	167.837	ug/L	98

(#) = qualifier out of range (m) = manual integration (+) = signals summed

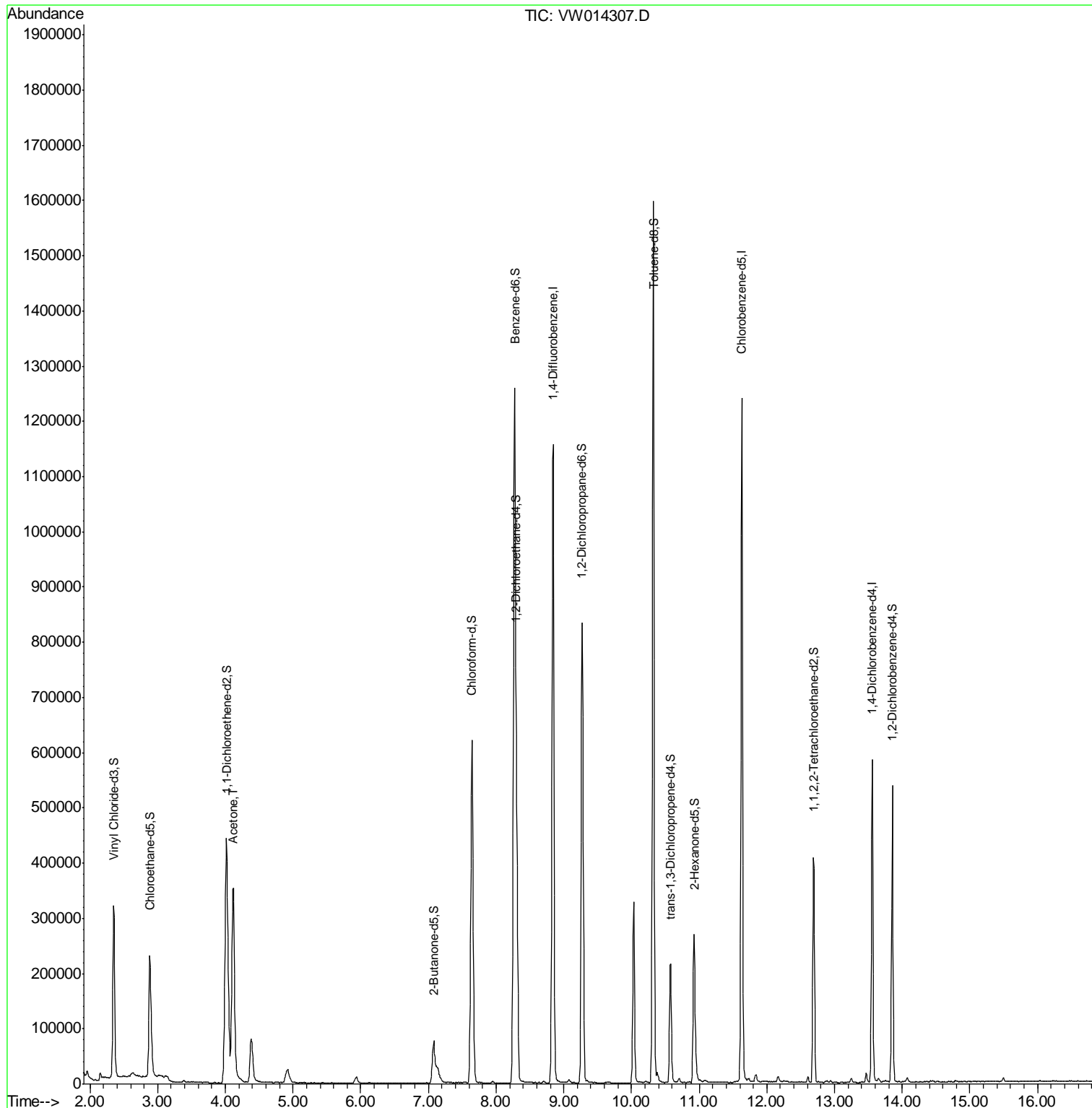
Data Path : Z:\VOASRV\HPCHEM1\MSVOA W\DATA\VW121119\
 Data File : VW014307.D
 Acq On : 11 Dec 2019 16:47
 Operator : SY/VA
 Sample : K6238-01
 Misc : 4.77G/10ML/MSVOA W/SOIL
 ALS Vial : 1 Sample Multiplier: 1

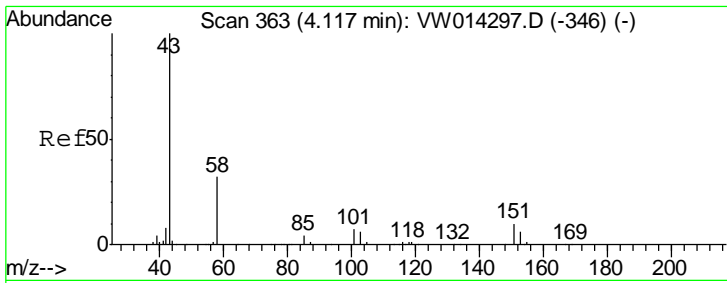
Instrument :
 MSVOA_W
 ClientSampled :
 BFPZ6

Manual Integrations
 APPROVED

apatel
 12/12/2019 4:21:16 PM

Quant Time: Dec 12 06:09:29 2019
 Quant Method : Z:\VOASRV\HPCHEM1\MSVOA_W\METHOD\SOM2WLM120519S.M
 Quant Title : VOC Analysis
 QLast Update : Thu Dec 12 04:57:07 2019
 Response via : Initial Calibration





#13
 Acetone
 Concen: 167.837 ug/L
 RT: 4.12 min Scan# 363
 Delta R.T. 0.00 min
 Lab File: VW014307.D
 Acq: 11 Dec 2019 16:47

Instrument :
 MSVOA_W
ClientSampled :
 BFPZ6

Tot Ion: 43 Resp: 632725

Ion	Ratio	Lower	Upper
43	100		
58	31.7	0.0	65.4

Manual Integrations
APPROVED
 apatel
 12/12/2019 4:21:16 PM

