

Data Path : Z:\VOASRV\HPCHEM1\MSVOA W\DATA\VW121318\
 Data File : VW007414.D
 Acq On : 12 Dec 2018 01:20
 Operator : SY/AP
 Sample : J6240-01
 Misc : 7.77G/5ML/MSVOA W/SOIL
 ALS Vial : 33 Sample Multiplier: 1

Instrument :
 MSVOA_W
 ClientSampleId :
 S32-0635

Quant Time: Dec 12 06:02:41 2018
 Quant Method : Z:\VOASRV\HPCHEM1\MSVOA_W\METHOD\82W121118S.M
 Quant Title : SW846 8260
 QLast Update : Tue Dec 11 02:58:16 2018
 Response via : Initial Calibration

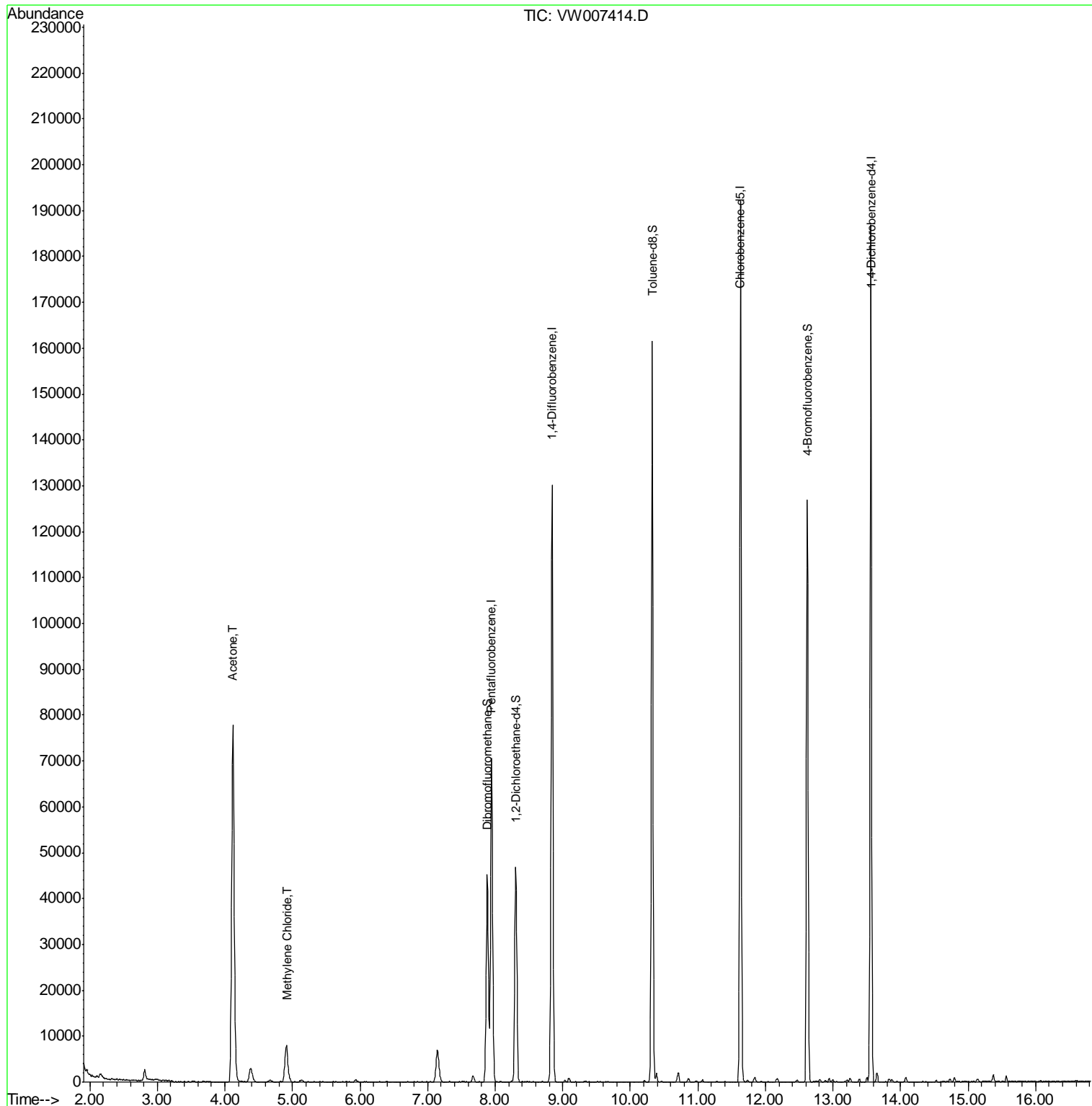
Internal Standards	R.T.	QIon	Response	Conc	Units	Dev(Min)
1) Pentafluorobenzene	7.95	168	51950	50.00	ug/l	0.00
34) 1,4-Difluorobenzene	8.84	114	110281	50.00	ug/l	0.00
63) Chlorobenzene-d5	11.63	117	107466	50.00	ug/l	0.00
72) 1,4-Dichlorobenzene-d4	13.56	152	48190	50.00	ug/l	0.00
System Monitoring Compounds						
33) 1,2-Dichloroethane-d4	8.31	65	37804	65.59	ug/l	0.00
Spiked Amount				50.000		
				Recovery	=	131.18%
35) Dibromofluoromethane	7.88	113	32972	49.39	ug/l	0.00
Spiked Amount				50.000		
				Recovery	=	98.78%
50) Toluene-d8	10.32	98	109560	43.77	ug/l	0.00
Spiked Amount				50.000		
				Recovery	=	87.54%
62) 4-Bromofluorobenzene	12.62	95	42936	46.65	ug/l	0.00
Spiked Amount				50.000		
				Recovery	=	93.30%
Target Compounds						
16) Acetone	4.12	43	132666	1317.829	ug/l	97
20) Methylene Chloride	4.91	84	6768	9.088	ug/l	92

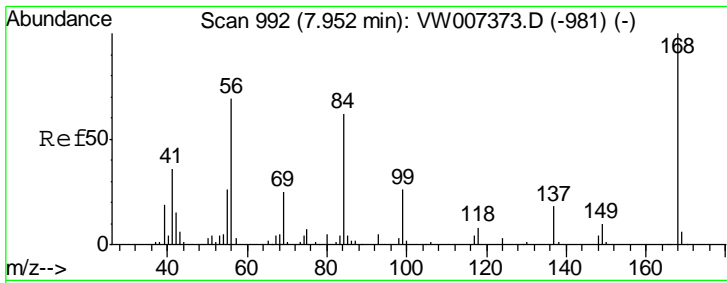
(#) = qualifier out of range (m) = manual integration (+) = signals summed

Data Path : Z:\VOASRV\HPCHEM1\MSVOA W\DATA\VW121318\
 Data File : VW007414.D
 Acq On : 12 Dec 2018 01:20
 Operator : SY/AP
 Sample : J6240-01
 Misc : 7.77G/5ML/MSVOA W/SOIL
 ALS Vial : 33 Sample Multiplier: 1

Instrument :
 MSVOA_W
 Client Sampled :
 S32-0635

Quant Time: Dec 12 06:02:41 2018
 Quant Method : Z:\VOASRV\HPCHEM1\MSVOA_W\METHOD\82W121118S.M
 Quant Title : SW846 8260
 QLast Update : Tue Dec 11 02:58:16 2018
 Response via : Initial Calibration

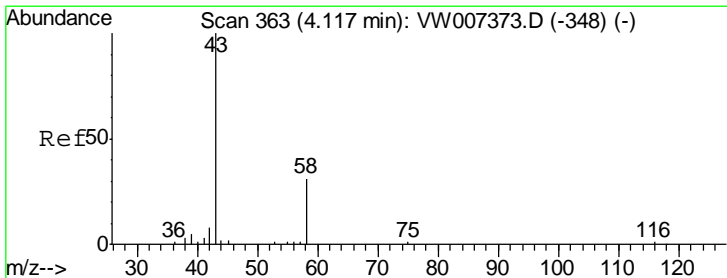
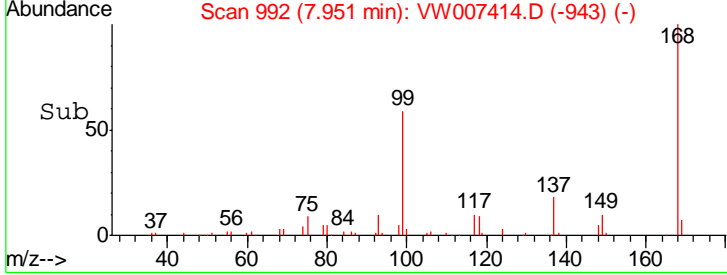
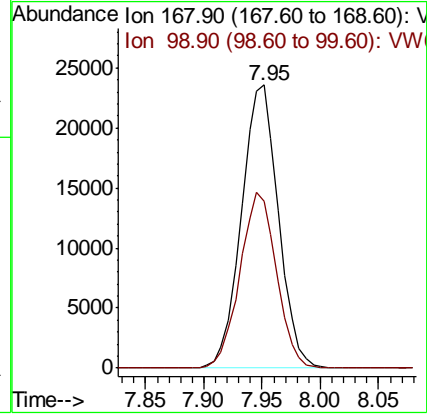
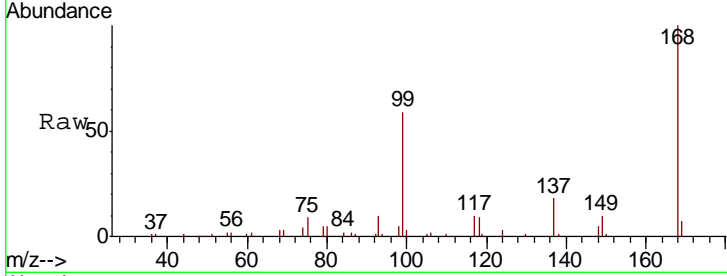




#1
 Pentafluorobenzene
 Concen: 50.000 ug/l
 RT: 7.95 min Scan# 992
 Delta R.T. -0.00 min
 Lab File: VW007414.D
 Acq: 12 Dec 2018 01:20

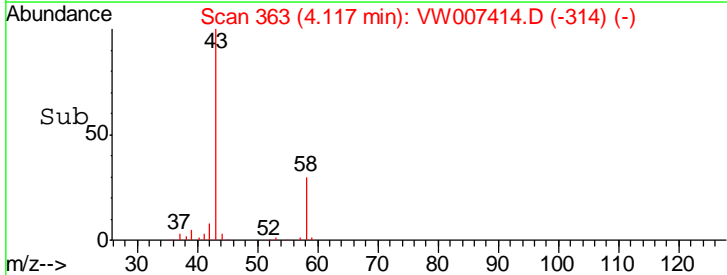
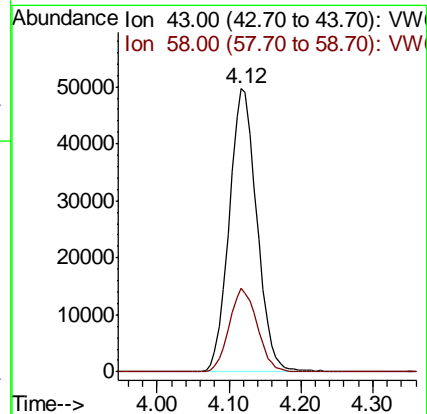
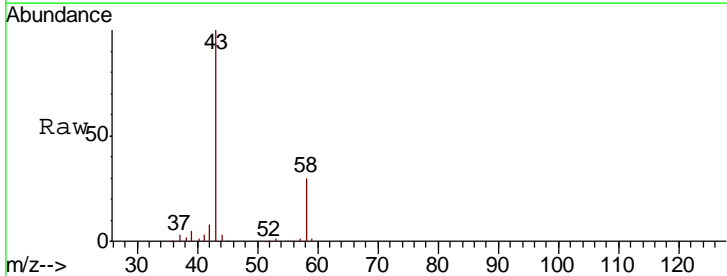
Instrument :
 MSVOA_W
 ClientSampled :
 S32-0635

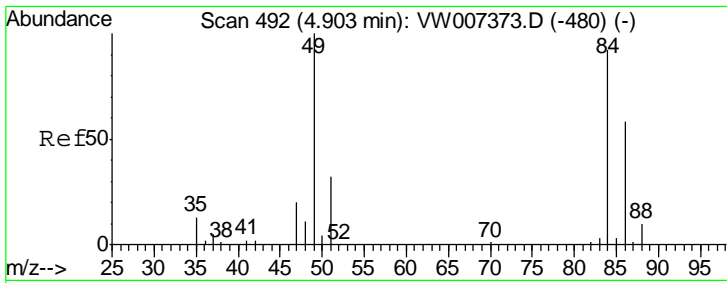
Tgt Ion: 168 Resp: 51950
 Ion Ratio Lower Upper
 168 100
 99 59.0 48.3 72.5



#16
 Acetone
 Concen: 1317.829 ug/l
 RT: 4.12 min Scan# 363
 Delta R.T. -0.00 min
 Lab File: VW007414.D
 Acq: 12 Dec 2018 01:20

Tgt Ion: 43 Resp: 132666
 Ion Ratio Lower Upper
 43 100
 58 29.5 24.9 37.3

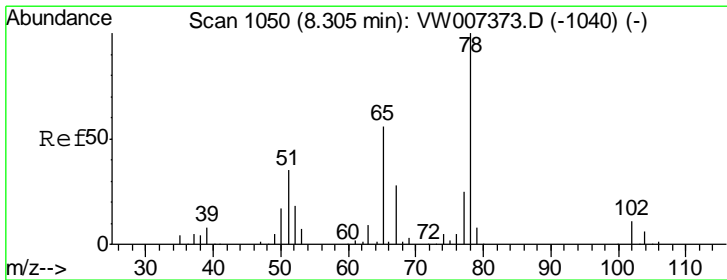
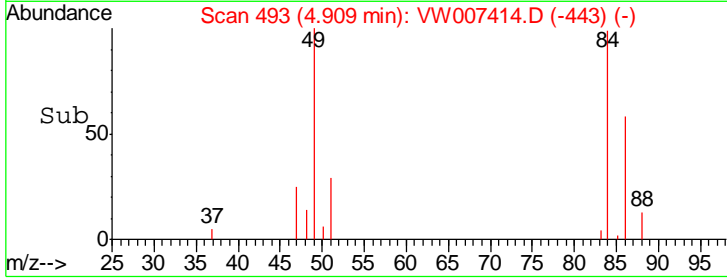
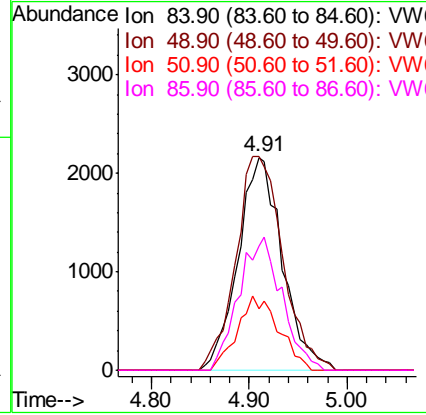
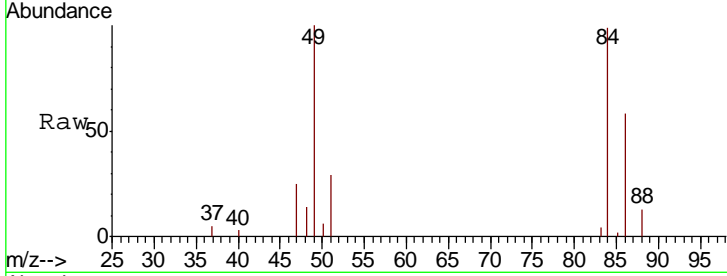




#20
 Methylene Chloride
 Concen: 9.088 ug/l
 RT: 4.91 min Scan# 493
 Delta R.T. 0.01 min
 Lab File: VW007414.D
 Acq: 12 Dec 2018 01:20

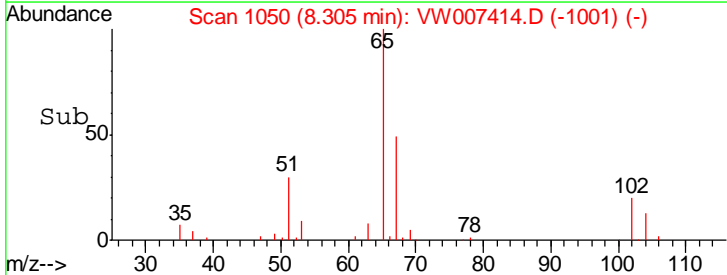
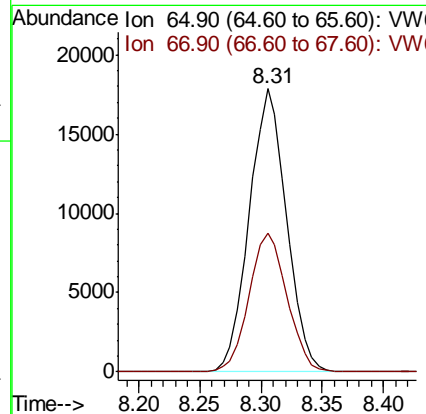
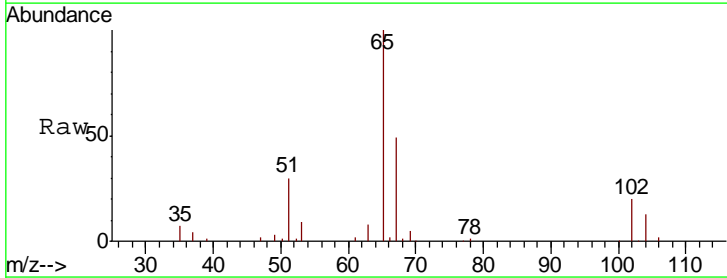
Instrument :
 MSVOA_W
 ClientSampled :
 S32-0635

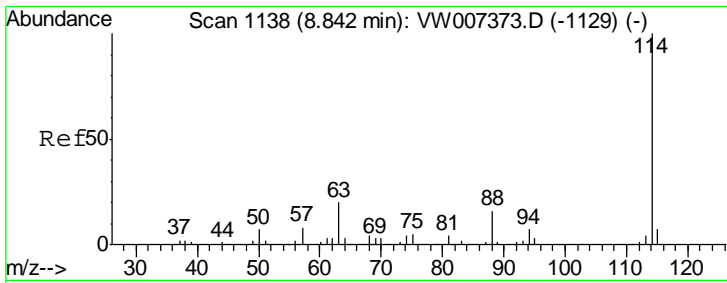
Tgt Ion	Resp	Lower	Upper
84	100		
49	100.5	87.1	130.7
51	28.9	28.2	42.2
86	58.5	50.8	76.2



#33
 1,2-Dichloroethane-d4
 Concen: 65.593 ug/l
 RT: 8.31 min Scan# 1050
 Delta R.T. -0.00 min
 Lab File: VW007414.D
 Acq: 12 Dec 2018 01:20

Tgt Ion	Resp	Lower	Upper
65	100		
67	50.0	0.0	101.6

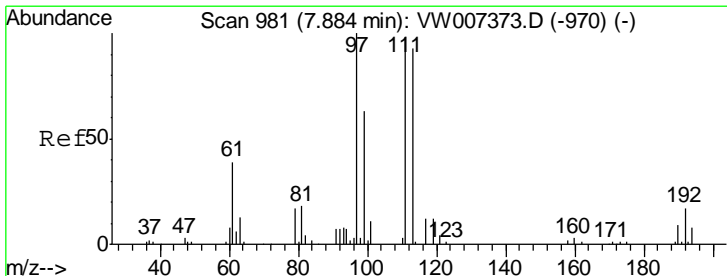
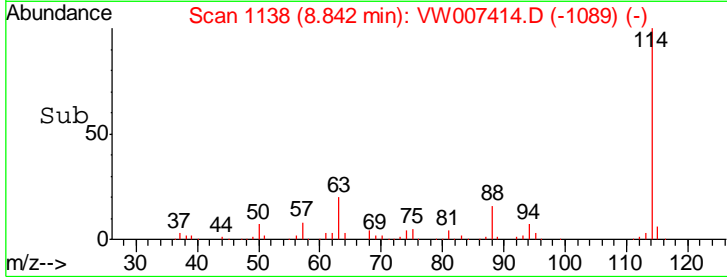
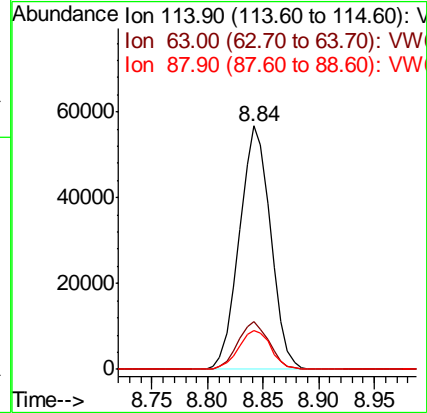
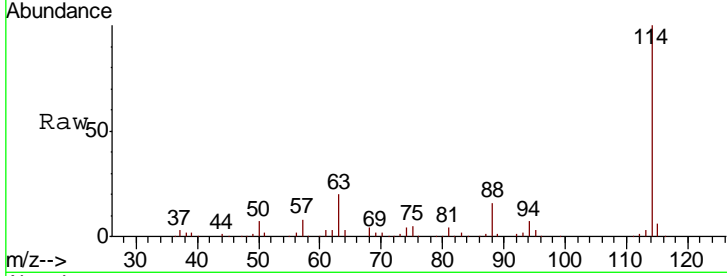




#34
 1,4-Difluorobenzene
 Concen: 50.000 ug/l
 RT: 8.84 min Scan# 1138
 Delta R.T. -0.00 min
 Lab File: VW007414.D
 Acq: 12 Dec 2018 01:20

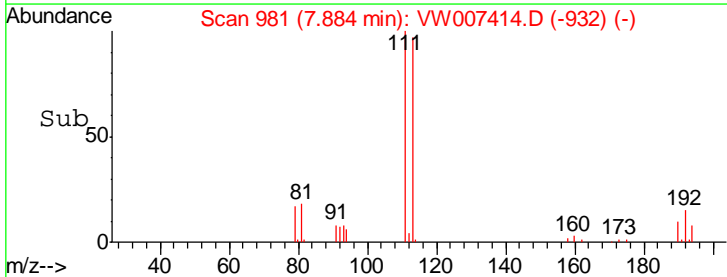
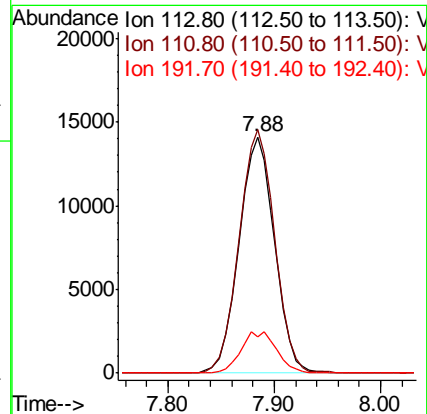
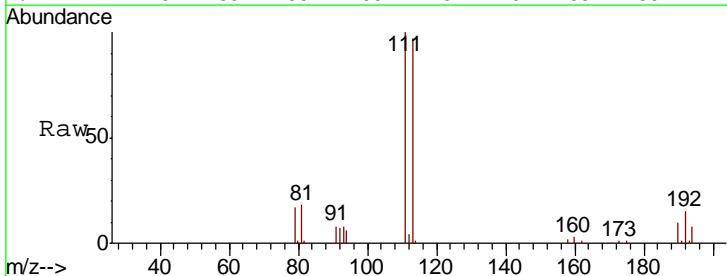
Instrument :
 MSVOA_W
 ClientSampled :
 S32-0635

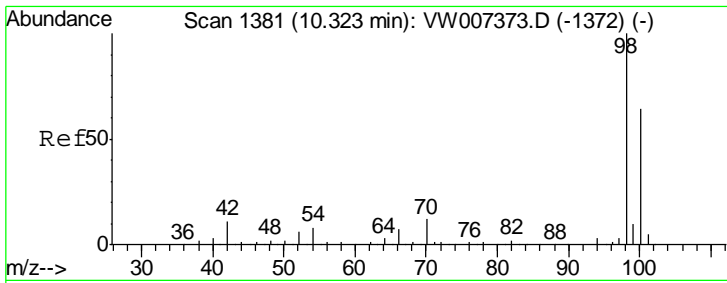
Tgt Ion	Resp	Lower	Upper
114	110281		
63	19.6	0.0	39.6
88	16.1	0.0	31.4



#35
 Dibromofluoromethane
 Concen: 49.391 ug/l
 RT: 7.88 min Scan# 981
 Delta R.T. -0.00 min
 Lab File: VW007414.D
 Acq: 12 Dec 2018 01:20

Tgt Ion	Resp	Lower	Upper
113	32972		
111	103.3	81.1	121.7
192	17.6	14.6	21.8

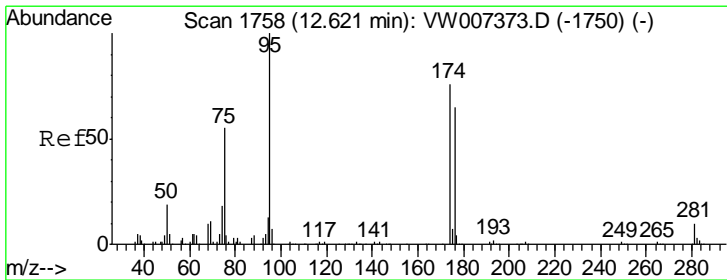
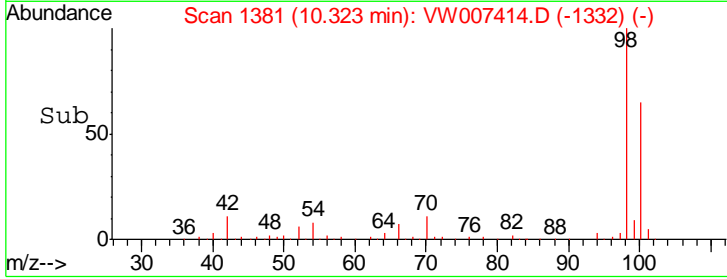
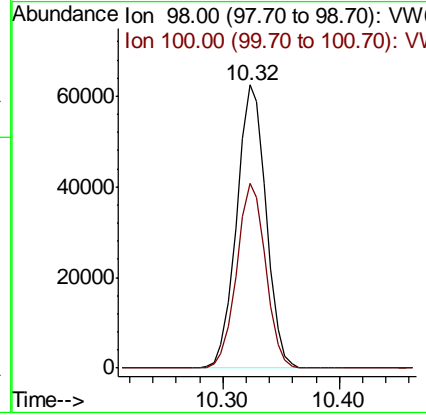
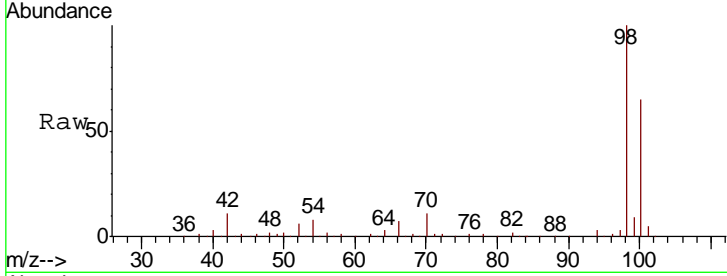




#50
 Toluene-d8
 Concen: 43.771 ug/l
 RT: 10.32 min Scan# 1381
 Delta R.T. -0.00 min
 Lab File: VW007414.D
 Acq: 12 Dec 2018 01:20

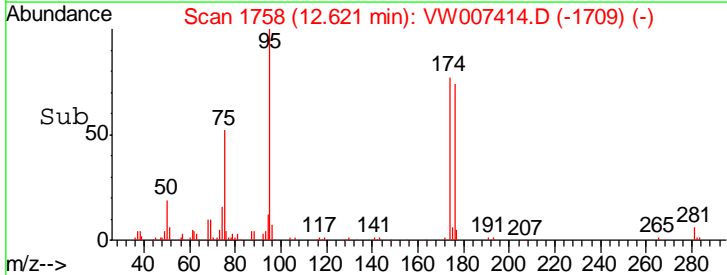
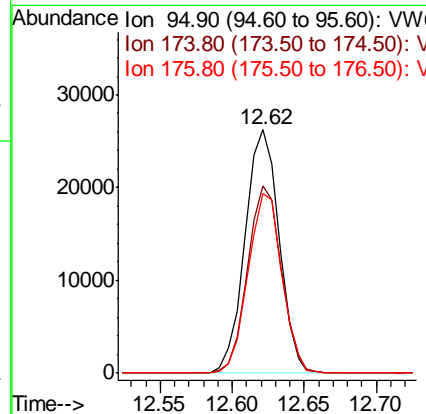
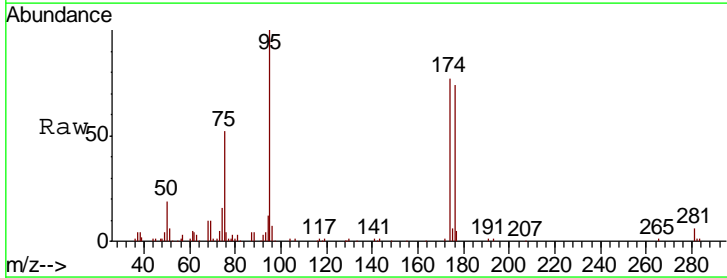
Instrument :
 MSVOA_W
 ClientSampled :
 S32-0635

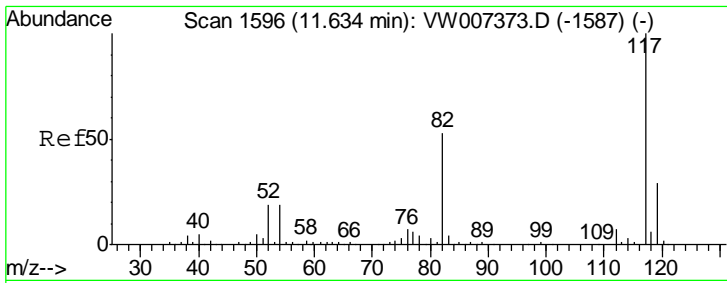
Tgt Ion: 98 Resp: 109560
 Ion Ratio Lower Upper
 98 100
 100 64.3 51.8 77.8



#62
 4-Bromofluorobenzene
 Concen: 46.654 ug/l
 RT: 12.62 min Scan# 1758
 Delta R.T. -0.00 min
 Lab File: VW007414.D
 Acq: 12 Dec 2018 01:20

Tgt Ion: 95 Resp: 42936
 Ion Ratio Lower Upper
 95 100
 174 76.1 0.0 147.2
 176 73.2 0.0 138.8

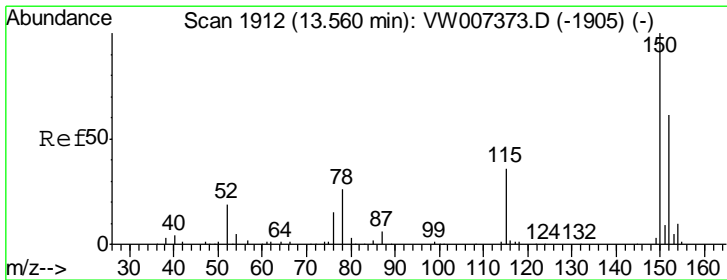
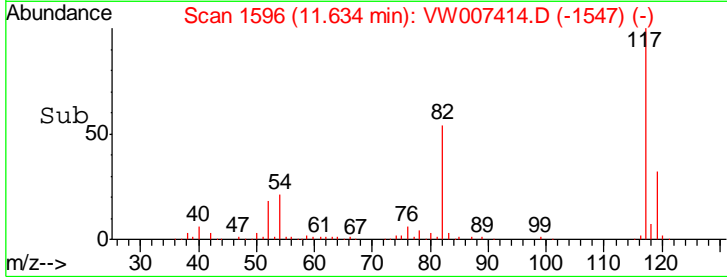
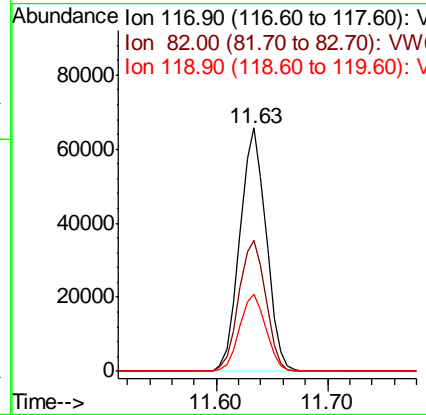
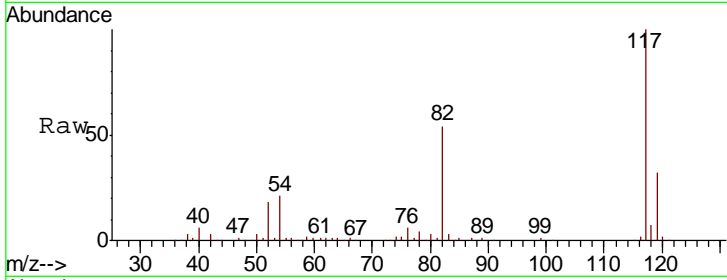




#63
 Chlorobenzene-d5
 Concen: 50.000 ug/l
 RT: 11.63 min Scan# 1596
 Delta R.T. -0.00 min
 Lab File: VW007414.D
 Acq: 12 Dec 2018 01:20

Instrument :
 MSVOA_W
 ClientSampled :
 S32-0635

Tgt Ion	Resp	Lower	Upper
117	107466		
82	53.6	42.3	63.5
119	31.9	23.0	34.6



#72
 1,4-Dichlorobenzene-d4
 Concen: 50.000 ug/l
 RT: 13.56 min Scan# 1912
 Delta R.T. -0.00 min
 Lab File: VW007414.D
 Acq: 12 Dec 2018 01:20

Tgt Ion	Resp	Lower	Upper
152	48190		
115	62.8	31.4	94.2
150	156.6	0.0	358.4

