

Data Path : Z:\voasrv\HPCHEM1\MSVOA\_W\Data\VW121321\  
 Data File : VW021359.D  
 Acq On : 13 Dec 2021 13:26  
 Operator : SY/VA  
 Sample : M4887-13  
 Misc : 5.06g/10.0mL/MSVOA\_W/SOIL  
 ALS Vial : 1 Sample Multiplier: 1

Instrument :  
 MSVOA\_W  
 ClientSampleId :  
 VHBLK001

Integration Parameters: LSCINT.P

Integrator: RTE  
 Smoothing : OFF Filtering: 5  
 Sampling : 1 Min Area: 0 % of largest Peak  
 Start Thrs: 0.2 Max Peaks: 100  
 Stop Thrs : 0 Peak Location: TOP

If leading or trailing edge < 100 prefer < Baseline drop else tangent >  
 Peak separation: 5

Method : Z:\voasrv\HPCHEM1\MSVOA\_W\Method\SFAMWLM120921SMA.M  
 Title : SFAM01.0

Signal : TIC: VW021359.D\data.ms

peak #	R.T. min	first scan	max scan	last scan	PK TY	peak height	corr. area	corr. % max.	% of total
1	2.343	67	72	81	rVB	46530	77317	20.82%	2.740%
2	2.879	154	160	169	rVB	28200	56402	15.18%	1.999%
3	3.690	292	293	296	rVB	249	213	0.06%	0.008%
4	4.013	336	346	360	rBV	45667	128081	34.48%	4.539%
5	4.251	381	385	386	rBV	243	284	0.08%	0.010%
6	4.312	394	395	398	rVB2	221	185	0.05%	0.007%
7	4.361	402	403	406	rVB2	286	211	0.06%	0.007%
8	4.391	406	408	410	rBV	198	237	0.06%	0.008%
9	4.434	412	415	417	rBV	188	240	0.06%	0.009%
10	4.806	474	476	478	rBV	192	194	0.05%	0.007%
11	4.909	484	493	506	rVV3	4259	13870	3.73%	0.492%
12	5.056	515	517	518	rBV	274	209	0.06%	0.007%
13	5.123	526	528	532	rBV	220	222	0.06%	0.008%
14	5.580	601	603	606	rVB	169	170	0.05%	0.006%
15	5.720	621	626	627	rBV	236	213	0.06%	0.008%
16	5.745	627	630	632	rBV2	394	382	0.10%	0.014%
17	5.800	638	639	642	rBV	173	155	0.04%	0.005%
18	5.861	648	649	652	rBV	184	141	0.04%	0.005%
19	5.940	657	662	668	rVB5	774	1832	0.49%	0.065%
20	6.050	676	680	681	rBV2	217	252	0.07%	0.009%
21	6.232	708	710	712	rBV	144	151	0.04%	0.005%
22	6.635	775	776	779	rBV	237	207	0.06%	0.007%
23	6.952	824	828	832	rBV2	214	376	0.10%	0.013%
24	7.092	843	851	857	rBV2	5852	17327	4.66%	0.614%
25	7.330	888	890	891	rBV2	207	177	0.05%	0.006%
26	7.415	902	904	907	rBV2	182	200	0.05%	0.007%
27	7.647	933	942	954	rBV	61677	150930	40.63%	5.349%
28	7.750	957	959	960	rBV	166	158	0.04%	0.006%
29	7.811	967	969	971	rVB	285	230	0.06%	0.008%
30	7.842	971	974	976	rBV	256	327	0.09%	0.012%
31	8.061	1009	1010	1015	rVB2	200	196	0.05%	0.007%
32	8.275	1034	1045	1060	rBV2	123682	371444	100.00%	13.165%
33	8.628	1102	1103	1106	rVB	311	248	0.07%	0.009%
34	8.842	1130	1138	1150	rVB	105010	202590	54.54%	7.180%
35	8.927	1150	1152	1154	rVV2	157	158	0.04%	0.006%
36	8.951	1154	1156	1158	rVB2	225	189	0.05%	0.007%

Data Path : Z:\voasrv\HPCHEM1\MSVOA\_W\Data\VW121321\  
 Data File : VW021359.D  
 Acq On : 13 Dec 2021 13:26  
 Operator : SY/VA  
 Sample : M4887-13  
 Misc : 5.06g/10.0mL/MSVOA\_W/SOIL  
 ALS Vial : 1 Sample Multiplier: 1

Instrument :  
 MSVOA\_W  
 ClientSampleId :  
 VHBLK001

Integration Parameters: LSCINT.P

Integrator: RTE  
 Smoothing : OFF  
 Sampling : 1  
 Start Thrs : 0.2  
 Stop Thrs : 0

Filtering: 5  
 Min Area: 0 % of largest Peak  
 Max Peaks: 100  
 Peak Location: TOP

If leading or trailing edge < 100 prefer < Baseline drop else tangent >  
 Peak separation: 5

Method : Z:\voasrv\HPCHEM1\MSVOA\_W\Method\SFAMWLM120921SMA.M  
 Title : SFAM01.0

37	8.982	1158	1161	1162	rBV	236	225	0.06%	0.008%
38	9.110	1181	1182	1184	rBV2	183	187	0.05%	0.007%
39	9.177	1191	1193	1196	rVB2	192	165	0.04%	0.006%
40	9.220	1199	1200	1201	rBV	268	148	0.04%	0.005%
41	9.275	1201	1209	1219	rVB	75886	154634	41.63%	5.481%
42	9.342	1219	1220	1222	rBV	224	145	0.04%	0.005%
43	9.403	1228	1230	1232	rBV	186	165	0.04%	0.006%
44	9.500	1244	1246	1251	rBV2	168	293	0.08%	0.010%
45	9.793	1292	1294	1298	rBV2	157	225	0.06%	0.008%
46	9.872	1304	1307	1308	rBV	162	162	0.04%	0.006%
47	9.945	1318	1319	1322	rBV	207	274	0.07%	0.010%
48	9.988	1324	1326	1327	rVV	351	222	0.06%	0.008%
49	10.037	1327	1334	1343	rVB	46147	82316	22.16%	2.917%
50	10.165	1352	1355	1357	rBV2	195	201	0.05%	0.007%
51	10.323	1374	1381	1388	rBV	182387	312660	84.17%	11.081%
52	10.390	1388	1392	1397	rVV	2599	4010	1.08%	0.142%
53	10.451	1399	1402	1403	rBV	218	209	0.06%	0.007%
54	10.482	1403	1407	1408	rBV2	136	210	0.06%	0.007%
55	10.579	1414	1423	1431	rBV	28962	49015	13.20%	1.737%
56	10.701	1436	1443	1451	rBV	35175	58616	15.78%	2.077%
57	10.927	1473	1480	1488	rVV	28636	48153	12.96%	1.707%
58	11.067	1497	1503	1507	rBV2	5777	9232	2.49%	0.327%
59	11.177	1515	1521	1525	rVB5	563	963	0.26%	0.034%
60	11.219	1525	1528	1529	rBV	216	191	0.05%	0.007%
61	11.262	1534	1535	1537	rBV	208	208	0.06%	0.007%
62	11.329	1544	1546	1547	rBV	260	191	0.05%	0.007%
63	11.439	1557	1564	1570	rVB2	17818	28194	7.59%	0.999%
64	11.512	1574	1576	1579	rBV2	130	166	0.04%	0.006%
65	11.579	1585	1587	1588	rBV	288	257	0.07%	0.009%
66	11.628	1588	1595	1603	rVV	146802	251602	67.74%	8.917%
67	11.829	1625	1628	1629	rBV	218	232	0.06%	0.008%
68	12.109	1672	1674	1675	rBV	163	146	0.04%	0.005%
69	12.244	1694	1696	1700	rBV	163	222	0.06%	0.008%
70	12.384	1717	1719	1722	rVB	179	138	0.04%	0.005%
71	12.469	1732	1733	1736	rVB3	580	412	0.11%	0.015%
72	12.603	1747	1755	1762	rBV	65751	108966	29.34%	3.862%
73	12.689	1763	1769	1776	rVV	58863	100279	27.00%	3.554%
74	12.756	1776	1780	1782	rVV2	627	817	0.22%	0.029%
75	12.932	1804	1809	1813	rBV4	2049	3205	0.86%	0.114%
76	13.188	1847	1851	1857	rVV2	1710	2949	0.79%	0.105%

Data Path : Z:\voasrv\HPCHEM1\MSVOA\_W\Data\VW121321\  
 Data File : VW021359.D  
 Acq On : 13 Dec 2021 13:26  
 Operator : SY/VA  
 Sample : M4887-13  
 Misc : 5.06g/10.0mL/MSVOA\_W/SOIL  
 ALS Vial : 1 Sample Multiplier: 1

Instrument :  
 MSVOA\_W  
 ClientSampleId :  
 VHBLK001

Integration Parameters: LSCINT.P

Integrator: RTE  
 Smoothing : OFF  
 Sampling : 1  
 Start Thrs : 0.2  
 Stop Thrs : 0

Filtering: 5  
 Min Area: 0 % of largest Peak  
 Max Peaks: 100  
 Peak Location: TOP

If leading or trailing edge < 100 prefer < Baseline drop else tangent >  
 Peak separation: 5

Method : Z:\voasrv\HPCHEM1\MSVOA\_W\Method\SFAMWLM120921SMA.M  
 Title : SFAM01.0

77	13.249	1857	1861	1862	rVV	497	622	0.17%	0.022%
78	13.292	1863	1868	1874	rVB	6512	10083	2.71%	0.357%
79	13.408	1880	1887	1891	rVB3	1601	2915	0.78%	0.103%
80	13.463	1893	1896	1897	rBV	125	155	0.04%	0.005%
81	13.512	1900	1904	1905	rBV3	540	645	0.17%	0.023%
82	13.554	1905	1911	1918	rBV	166803	264398	71.18%	9.371%
83	13.762	1941	1945	1950	rBV4	1416	2738	0.74%	0.097%
84	13.853	1953	1960	1966	rBV	162910	269345	72.51%	9.546%
85	14.066	1989	1995	2002	rBV	10968	16836	4.53%	0.597%
86	14.164	2009	2011	2013	rBV	176	176	0.05%	0.006%
87	14.487	2062	2064	2065	rBV	235	161	0.04%	0.006%
88	14.566	2075	2077	2079	rBV	202	193	0.05%	0.007%
89	14.719	2099	2102	2106	rVB3	973	1378	0.37%	0.049%
90	15.091	2161	2163	2167	rBV	227	332	0.09%	0.012%
91	15.359	2206	2207	2209	rBV	275	197	0.05%	0.007%
92	15.426	2215	2218	2223	rVB2	1150	1486	0.40%	0.053%
93	15.487	2223	2228	2237	rVB2	1080	1959	0.53%	0.069%
94	15.853	2287	2288	2290	rBV2	267	209	0.06%	0.007%
95	15.877	2290	2292	2294	rVV	215	170	0.05%	0.006%
96	15.944	2302	2303	2305	rBV	324	222	0.06%	0.008%
97	16.005	2311	2313	2315	rVB	248	204	0.05%	0.007%
98	16.042	2315	2319	2322	rVV2	275	344	0.09%	0.012%
99	16.145	2335	2336	2339	rBV2	321	252	0.07%	0.009%
100	16.383	2373	2375	2376	rVB	326	182	0.05%	0.006%

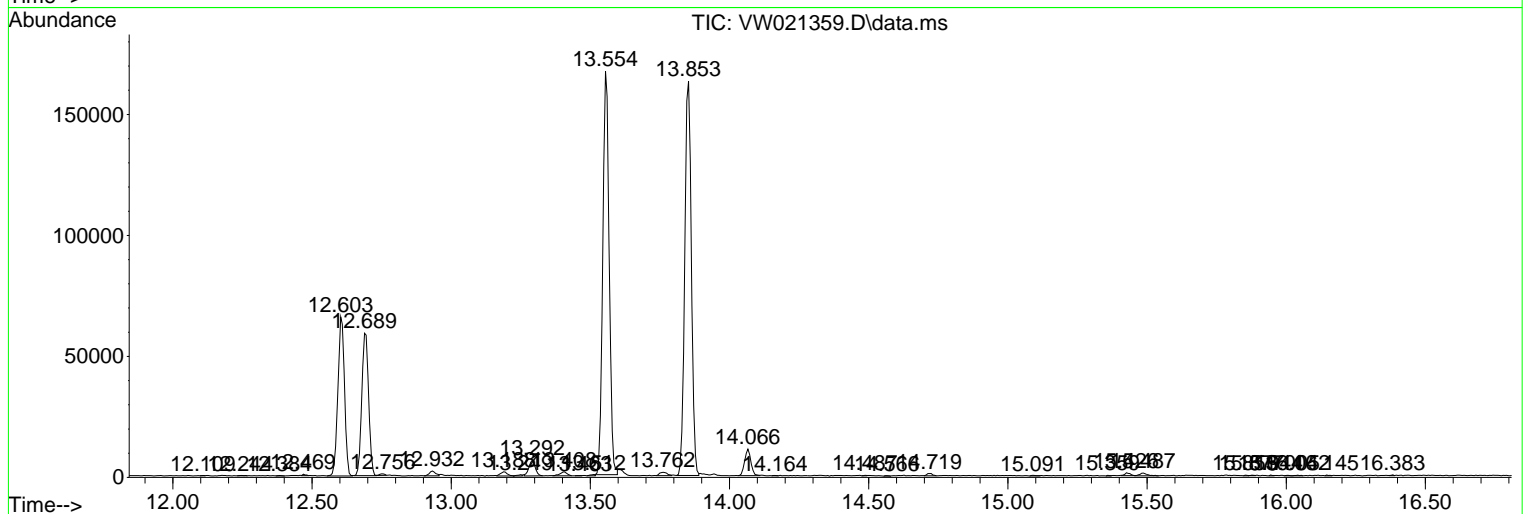
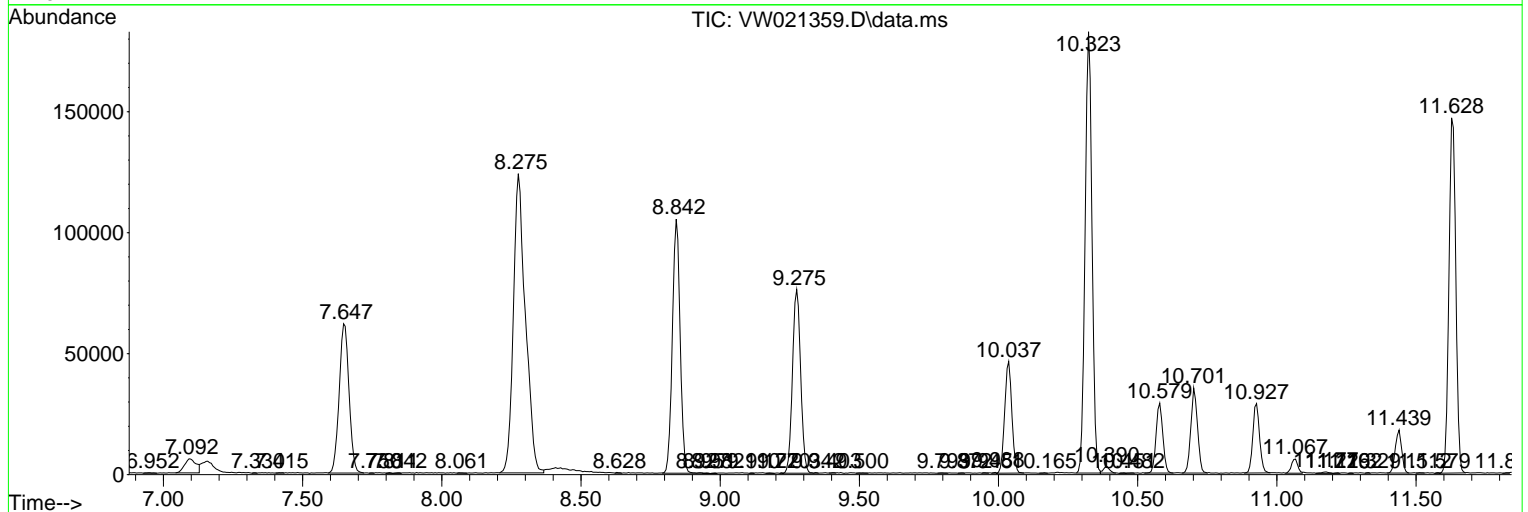
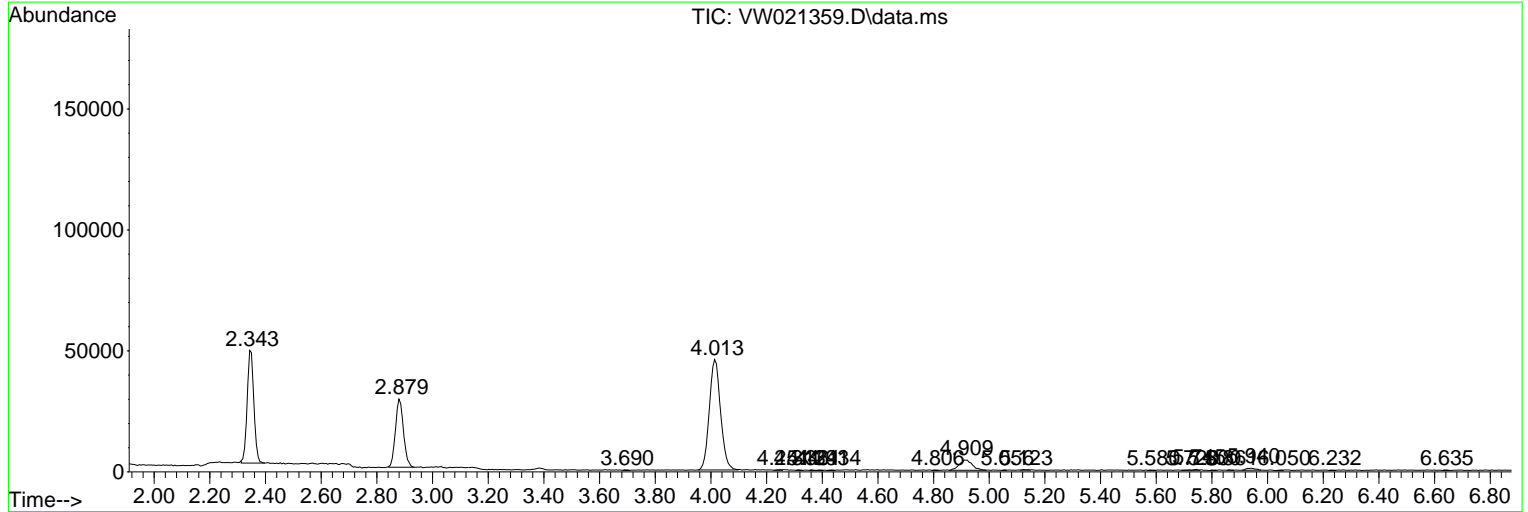
Sum of corrected areas: 2821525

Data Path : Z:\voasrv\HPCHEM1\MSVOA\_W\Data\VW121321\  
 Data File : VW021359.D  
 Acq On : 13 Dec 2021 13:26  
 Operator : SY/VA  
 Sample : M4887-13  
 Misc : 5.06g/10.0mL/MSVOA\_W/SOIL  
 ALS Vial : 1 Sample Multiplier: 1

Instrument :  
 MSVOA\_W  
 ClientSampleId :  
 VHBLK001

Quant Method : Z:\voasrv\HPCHEM1\MSVOA\_W\Method\SFAMWLM120921SMA.M  
 Quant Title : SFAM01.0

TIC Library : C:\Database\NIST20.L  
 TIC Integration Parameters: LSCINT.P



Data Path : Z:\voasrv\HPCHEM1\MSVOA\_W\Data\VW121321\  
Data File : VW021359.D  
Acq On : 13 Dec 2021 13:26  
Operator : SY/VA  
Sample : M4887-13  
Misc : 5.06g/10.0mL/MSVOA\_W/SOIL  
ALS Vial : 1 Sample Multiplier: 1

**Instrument :**  
MSVOA\_W  
**ClientSampleId :**  
VHBLK001

Quant Method : Z:\voasrv\HPCHEM1\MSVOA\_W\Method\SFAMWLM120921SMA.M  
Quant Title : SFAM01.0

TIC Library : C:\Database\NIST0.L  
TIC Integration Parameters: LSCINT.P

No Library Search Compounds Detected

\*\*\*\*\*

Data Path : Z:\voasrv\HPCHEM1\MSVOA\_W\Data\VW121321\  
Data File : VW021359.D  
Acq On : 13 Dec 2021 13:26  
Operator : SY/VA  
Sample : M4887-13  
Misc : 5.06g/10.0mL/MSVOA\_W/SOIL  
ALS Vial : 1 Sample Multiplier: 1

Instrument :  
MSVOA\_W  
ClientSampleId :  
VHBLK001

Quant Method : Z:\voasrv\HPCHEM1\MSVOA\_W\Method\SFAMWLM120921SMA.M  
Quant Title : SFAM01.0

TIC Library : C:\Database\NIST0.L  
TIC Integration Parameters: LSCINT.P

TIC Top Hit name	RT	EstConc	Units	Response	--Internal Standard--		
					#	RT	Resp Conc

---