

Data Path : Z:\voasrv\HPCHEM1\MSVOA\_W\Data\VW121323\  
 Data File : VW027597.D  
 Acq On : 13 Dec 2023 16:16  
 Operator : SY/MD  
 Sample : 05752-06  
 Misc : 5.04g/10mL/MSVOA\_W/SOIL  
 ALS Vial : 6 Sample Multiplier: 1

Instrument :  
 MSVOA\_W  
 ClientSampleId :

Quant Time: Dec 14 00:19:20 2023  
 Quant Method : Z:\voasrv\HPCHEM1\MSVOA\_W\Method\SFAMWLM120623SMA.M  
 Quant Title : SFAM01.0  
 QLast Update : Wed Dec 13 04:25:58 2023  
 Response via : Initial Calibration

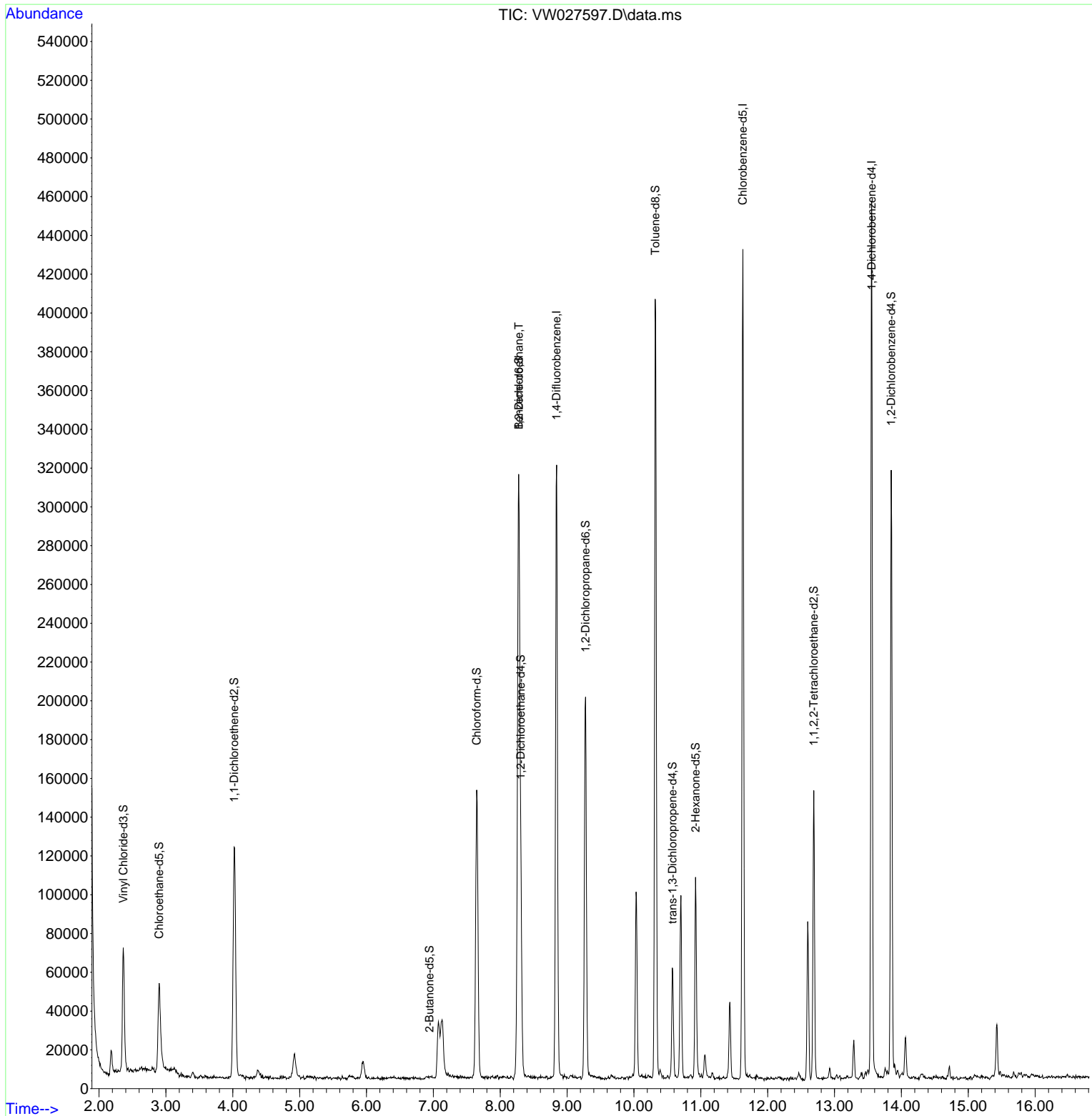
Compound	R.T.	QIon	Response	Conc	Units	Dev(Min)
Internal Standards						
1) 1,4-Difluorobenzene	8.843	114	260183	25.000	ug/L	0.00
28) Chlorobenzene-d5	11.629	117	222631	25.000	ug/L	0.00
58) 1,4-Dichlorobenzene-d4	13.556	152	110014	25.000	ug/L	0.00
System Monitoring Compounds						
4) Vinyl Chloride-d3	2.363	65	81761	15.616	ug/L	0.00
Spiked Amount	25.000	Range 30 - 150	Recovery =	62.480%		
7) Chloroethane-d5	2.899	69	67178	17.699	ug/L	0.00
Spiked Amount	25.000	Range 30 - 150	Recovery =	70.800%		
11) 1,1-Dichloroethene-d2	4.021	65	37976	17.141	ug/L	0.00
Spiked Amount	25.000	Range 45 - 110	Recovery =	68.560%		
21) 2-Butanone-d5	6.941	46	86	0.063	ug/L	-0.14
Spiked Amount	50.000	Range 20 - 135	Recovery =	0.120%#		
24) Chloroform-d	7.648	84	149485	19.248	ug/L	0.00
Spiked Amount	25.000	Range 40 - 150	Recovery =	77.000%		
26) 1,2-Dichloroethane-d4	8.307	65	78577	19.785	ug/L	0.00
Spiked Amount	25.000	Range 70 - 130	Recovery =	79.160%		
32) Benzene-d6	8.276	84	311728	19.880	ug/L	0.00
Spiked Amount	25.000	Range 20 - 135	Recovery =	79.520%		
36) 1,2-Dichloropropane-d6	9.276	67	96192	20.809	ug/L	0.00
Spiked Amount	25.000	Range 70 - 120	Recovery =	83.240%		
41) Toluene-d8	10.319	98	263469	19.204	ug/L	0.00
Spiked Amount	25.000	Range 30 - 130	Recovery =	76.800%		
43) trans-1,3-Dichloroprop...	10.575	79	32078	17.945	ug/L	0.00
Spiked Amount	25.000	Range 30 - 135	Recovery =	71.800%		
47) 2-Hexanone-d5	10.922	63	34766	40.365	ug/L	0.00
Spiked Amount	50.000	Range 20 - 135	Recovery =	80.720%		
56) 1,1,2,2-Tetrachloroeth...	12.690	84	75113	19.755	ug/L	0.00
Spiked Amount	25.000	Range 45 - 120	Recovery =	79.000%		
66) 1,2-Dichlorobenzene-d4	13.848	152	78940	20.470	ug/L	0.00
Spiked Amount	25.000	Range 75 - 120	Recovery =	81.880%		
Target Compounds						
27) 1,2-Dichloroethane	8.276	62	2175	0.476	ug/L	98

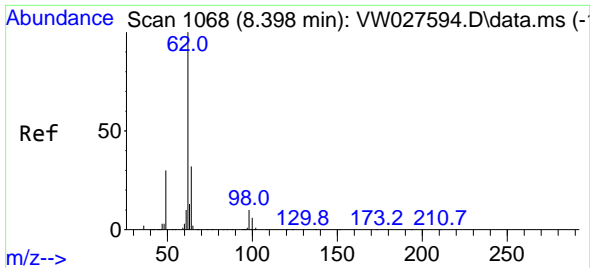
(#) = qualifier out of range (m) = manual integration (+) = signals summed

Data Path : Z:\voasrv\HPCHEM1\MSVOA\_W\Data\VW121323\  
 Data File : VW027597.D  
 Acq On : 13 Dec 2023 16:16  
 Operator : SY/MD  
 Sample : 05752-06  
 Misc : 5.04g/10mL/MSVOA\_W/SOIL  
 ALS Vial : 6 Sample Multiplier: 1

Instrument :  
 MSVOA\_W  
 ClientSampleId :

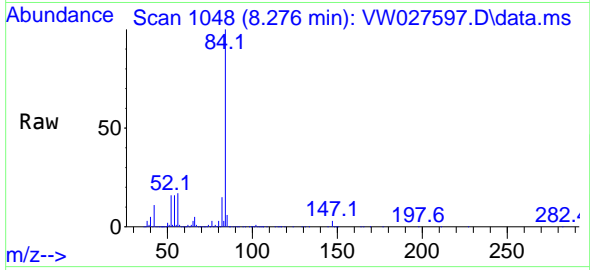
Quant Time: Dec 14 00:19:20 2023  
 Quant Method : Z:\voasrv\HPCHEM1\MSVOA\_W\Method\SFAMWLM120623SMA.M  
 Quant Title : SFAM01.0  
 QLast Update : Wed Dec 13 04:25:58 2023  
 Response via : Initial Calibration





#27  
 1,2-Dichloroethane  
 Concen: 0.476 ug/L  
 RT: 8.276 min Scan# 10  
 Delta R.T. -0.122 min  
 Lab File: VW027597.D  
 Acq: 13 Dec 2023 16:16

Instrument :  
 MSVOA\_W  
 ClientSampleId :



Tgt Ion: 62 Resp: 2175  
 Ion Ratio Lower Upper  
 62 100  
 98 8.6 7.4 11.0

