

Data Path : Z:\VOASRV\HPCHEM1\MSVOA W\DATA\VW121518\
 Data File : VW007460.D
 Acq On : 13 Dec 2018 01:22
 Operator : SY/AP
 Sample : J6340-02
 Misc : 5.74G/5ML/MSVOA W/SOIL
 ALS Vial : 34 Sample Multiplier: 1

Instrument :
 MSVOA_W
 ClientSampleId :
 SB-02B

Integration Parameters: RTEINT.P
 Integrator: RTE
 Smoothing : ON Filtering: 5
 Sampling : 1 Min Area: 3 % of largest Peak
 Start Thrs: 0.2 Max Peaks: 100
 Stop Thrs : 0 Peak Location: TOP

If leading or trailing edge < 100 prefer < Baseline drop else tangent >
 Peak separation: 5

Method : Z:\VOASRV\HPCHEM1\MSVOA_W\METHOD\82W121118S.M
 Title : SW846 8260

Signal : TIC

peak #	R.T. min	first scan	max scan	last scan	PK TY	peak height	corr. area	corr. % max.	% of total
1	4.903	483	492	503	rBV3	2806	8749	2.67%	0.454%
2	7.141	850	859	868	rBV	5762	15546	4.75%	0.807%
3	7.885	972	981	985	rBV	47265	107255	32.78%	5.571%
4	7.945	985	991	1005	rVB	104144	226760	69.30%	11.778%
5	8.305	1034	1050	1064	rBV2	40852	98420	30.08%	5.112%
6	8.842	1129	1138	1150	rBB	149047	296537	90.62%	15.402%
7	10.323	1372	1381	1389	rBV	174952	305385	93.33%	15.861%
8	10.707	1438	1444	1450	rBV	6118	10636	3.25%	0.552%
9	11.067	1498	1503	1509	rVB2	8582	12728	3.89%	0.661%
10	11.445	1559	1565	1571	rVB	5302	8776	2.68%	0.456%
11	11.634	1589	1596	1604	rVB	196737	327222	100.00%	16.996%
12	12.621	1749	1758	1767	rVB2	129748	213034	65.10%	11.065%
13	13.560	1906	1912	1921	rBV	180426	288236	88.09%	14.971%
14	14.079	1991	1997	2004	rBB2	4090	6043	1.85%	0.314%

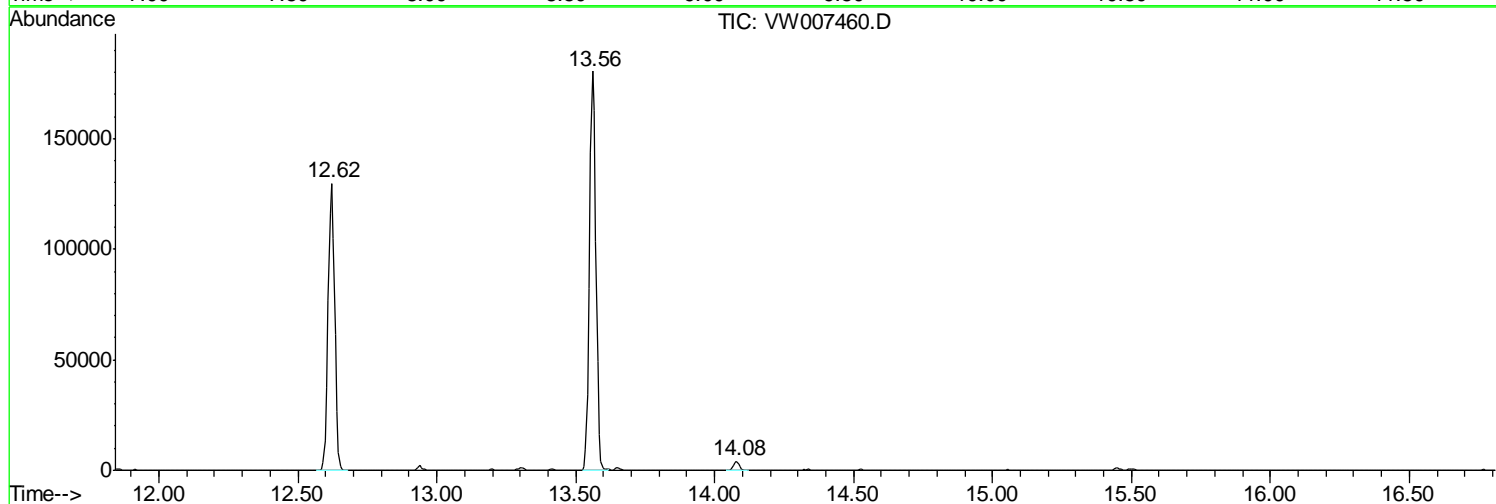
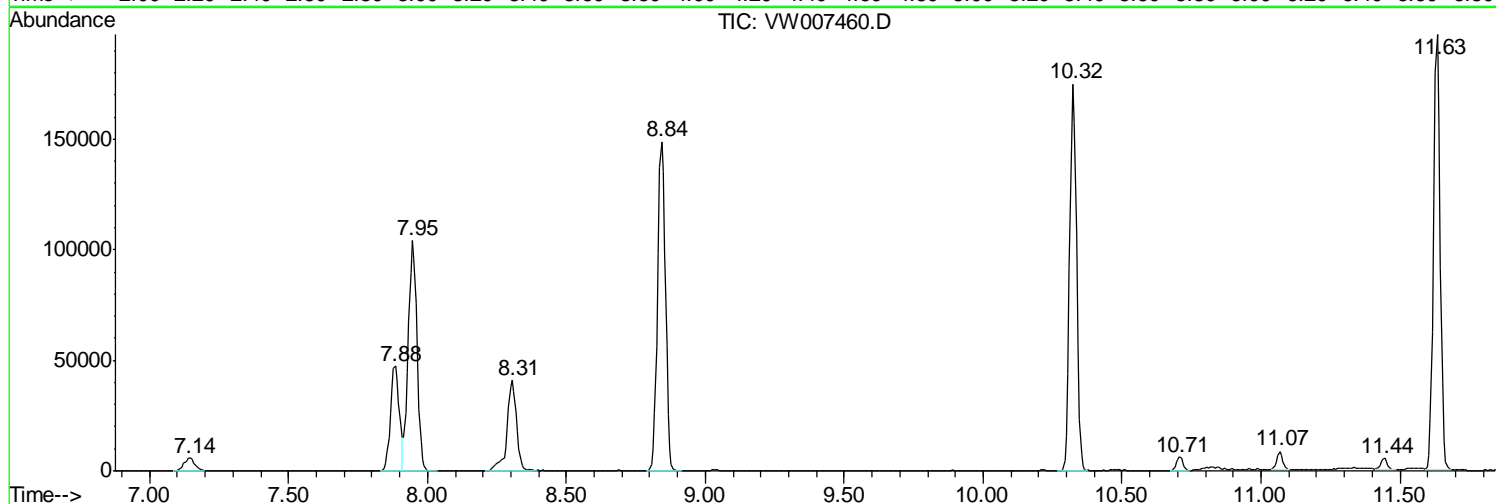
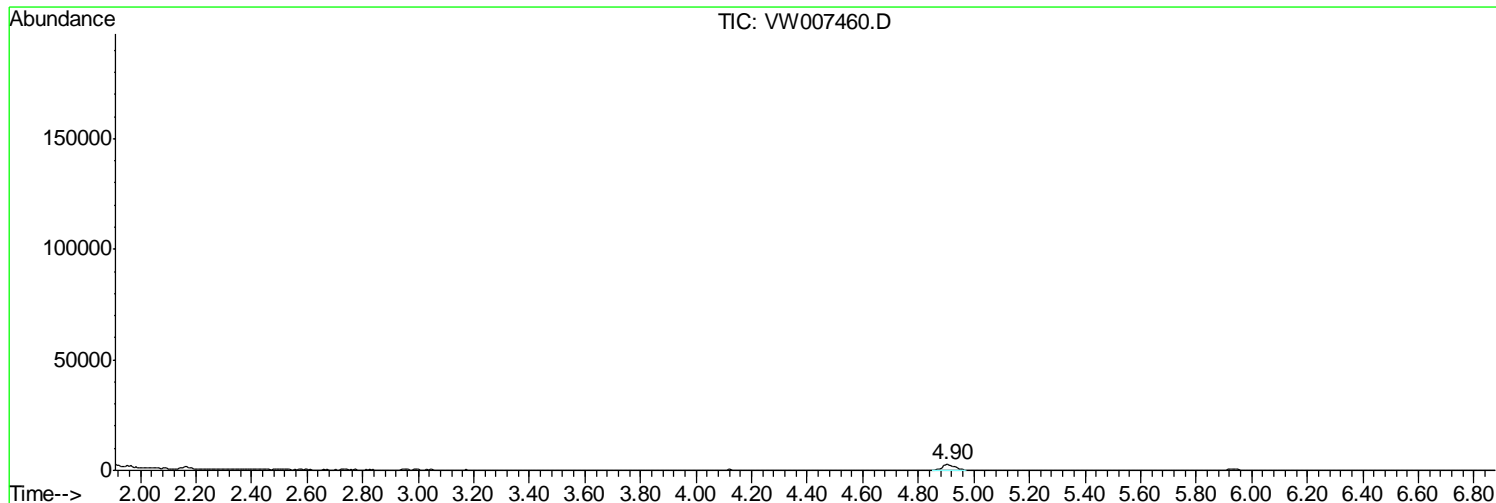
Sum of corrected areas: 1925327

Data Path : Z:\VOASRV\HPCHEM1\MSVOA W\DATA\VW121518\
Data File : VW007460.D
Acq On : 13 Dec 2018 01:22
Operator : SY/AP
Sample : J6340-02
Misc : 5.74G/5ML/MSVOA W/SOIL
ALS Vial : 34 Sample Multiplier: 1

Instrument :
MSVOA_W
ClientSampleId :
SB-02B

Quant Method : Z:\VOASRV\HPCHEM1\MSVOA_W\METHOD\82W121118S.M
Quant Title : SW846 8260

TIC Library : C:\DATABASE\NIST11.L
TIC Integration Parameters: LSCINT.P



Data Path : Z:\VOASRV\HPCHEM1\MSVOA_W\DATA\VW121518\
Data File : VW007460.D
Acq On : 13 Dec 2018 01:22
Operator : SY/AP
Sample : J6340-02
Misc : 5.74G/5ML/MSVOA_W/SOIL
ALS Vial : 34 Sample Multiplier: 1

Instrument :
MSVOA_W
ClientSampleId :
SB-02B

Quant Method : Z:\VOASRV\HPCHEM1\MSVOA_W\METHOD\82W121118S.M
Quant Title : SW846 8260

TIC Library : C:\DATABASE\NIST11.L
TIC Integration Parameters: LSCINT.P

No Library Search Compounds Detected

Data Path : Z:\VOASRV\HPCHEM1\MSVOA_W\DATA\VW121518\
Data File : VW007460.D
Acq On : 13 Dec 2018 01:22
Operator : SY/AP
Sample : J6340-02
Misc : 5.74G/5ML/MSVOA_W/SOIL
ALS Vial : 34 Sample Multiplier: 1

Instrument :
MSVOA_W
ClientSampleId :
SB-02B

Quant Method : Z:\VOASRV\HPCHEM1\MSVOA_W\METHOD\82W121118S.M
Quant Title : SW846 8260

TIC Library : C:\DATABASE\NIST11.L
TIC Integration Parameters: LSCINT.P

TIC Top Hit name	RT	EstConc	Units	Response	--Internal Standard--			
					#	RT	Resp	Conc
