

Data Path : Z:\voasrv\HPCHEM1\MSVOA_W\Data\WV121520\
 Data File : WV017631.D
 Acq On : 15 Dec 2020 14:03
 Operator : SY/VA
 Sample : L5010-05
 Mi sc : 2.49G/5ML/MSVOA_W/SOIL
 ALS Vial : 6 Sample Multiplier: 1

Instrument :
 MSVOA_W
ClientSampleId :
 JBD-DUP-120920

Quant Time: Dec 16 02:38:16 2020
 Quant Method : Z:\voasrv\HPCHEM1\MSVOA_W\Method\82W121420S.M
 Quant Title : SW846 8260
 QLast Update : Mon Dec 14 12:39:23 2020
 Response via : Initial Calibration

Compound	R. T.	QI on	Response	Conc	Units	Dev(Min)

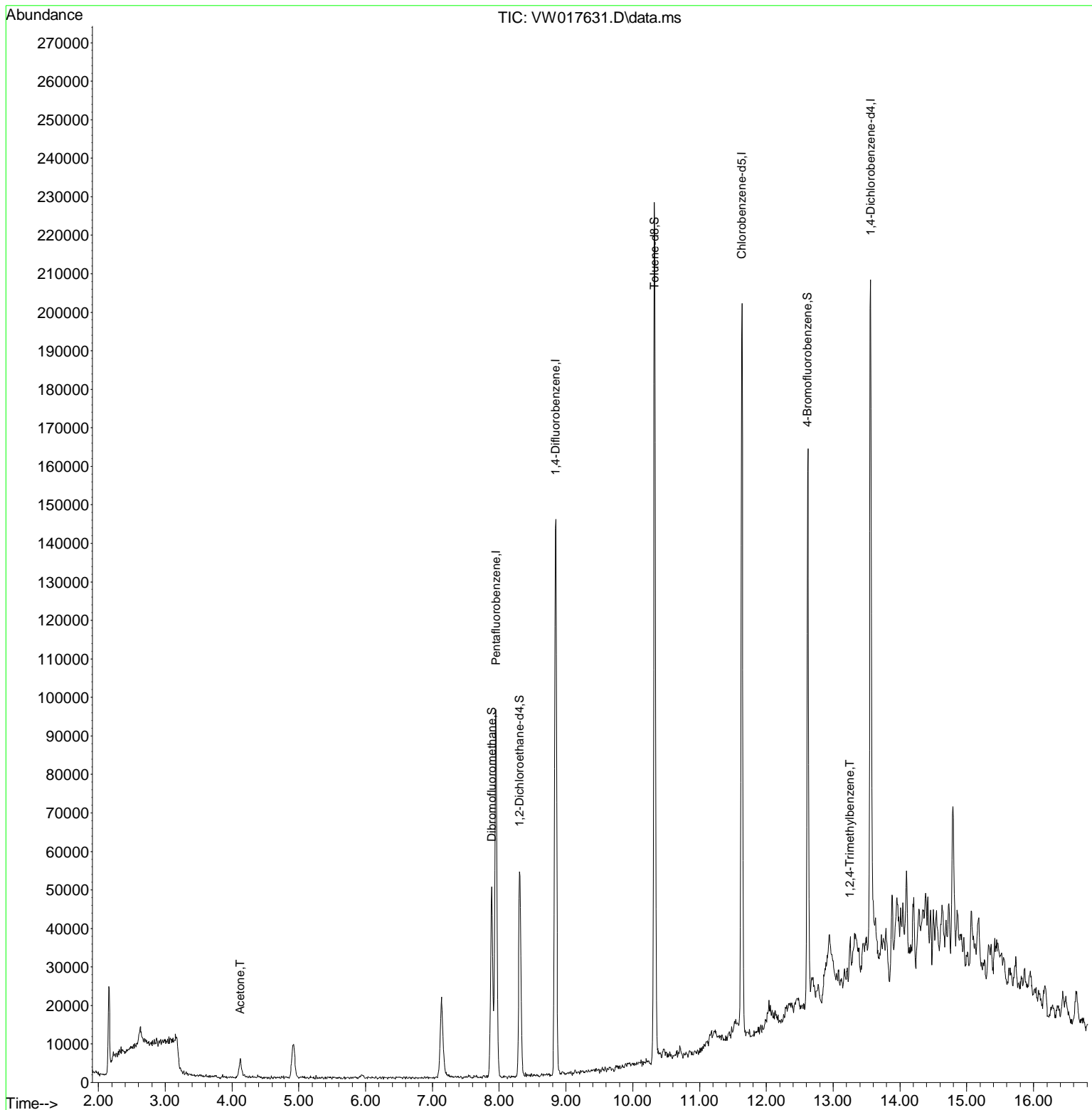
Internal Standards						
1) Pentafluorobenzene	7.952	168	67383	50.00	ug/l	0.00
34) 1,4-Difluorobenzene	8.848	114	118175	50.00	ug/l	0.00
63) Chlorobenzene-d5	11.634	117	102465	50.00	ug/l	0.00
72) 1,4-Dichlorobenzene-d4	13.560	152	44229	50.00	ug/l	0.00
System Monitoring Compounds						
33) 1,2-Dichloroethane-d4	8.305	65	42707	52.03	ug/l	0.00
Spiked Amount						Recovery = 104.06%
35) Dibromofluoromethane	7.891	113	34210	43.75	ug/l	0.00
Spiked Amount						Recovery = 87.50%
50) Toluene-d8	10.323	98	144340	47.41	ug/l	0.00
Spiked Amount						Recovery = 94.82%
62) 4-Bromofluorobenzene	12.615	95	47910	44.07	ug/l	0.00
Spiked Amount						Recovery = 88.14%
Target Compounds						
16) Acetone	4.123	43	8675	48.57	ug/l	92
84) 1,2,4-Trimethylbenzene	13.249	105	4397	1.51	ug/l	81

(#) = qualifier out of range (m) = manual integration (+) = signals summed

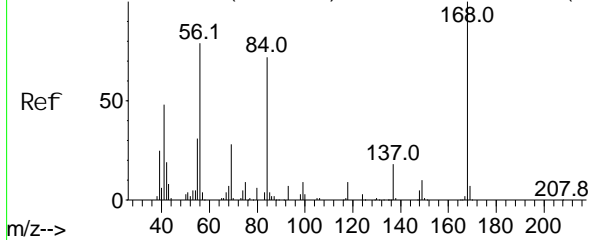
Data Path : Z:\voasrv\HPCHEM1\MSVOA_W\Data\VW121520\
 Data File : VW017631.D
 Acq On : 15 Dec 2020 14:03
 Operator : SY/VA
 Sample : L5010-05
 Misc : 2.49G/5ML/MSVOA_W/SOIL
 ALS Vial : 6 Sample Multiplier: 1

Instrument :
 MSVOA_W
 ClientSampleId :
 JBD-DUP-120920

Quant Time: Dec 16 02:38:16 2020
 Quant Method : Z:\voasrv\HPCHEM1\MSVOA_W\Method\82W121420S.M
 Quant Title : SW846 8260
 QLast Update : Mon Dec 14 12:39:23 2020
 Response via : Initial Calibration

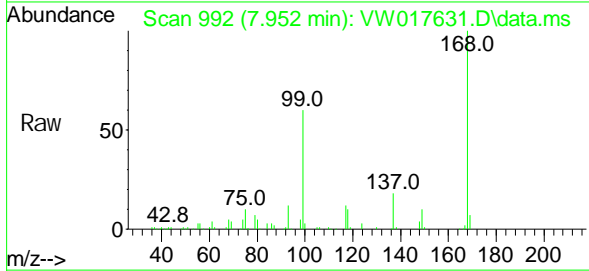


Abundance Scan 992 (7.951 min): VW017604.D\data.ms (-98071)

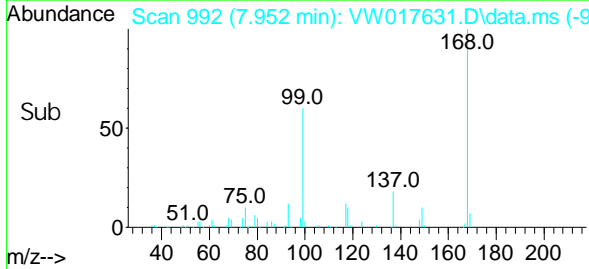
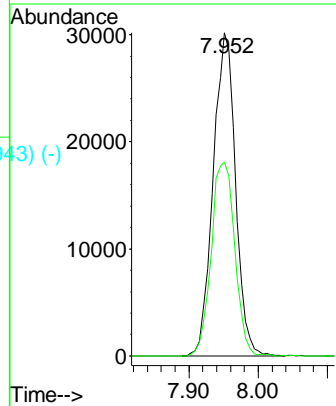


Pentaf luorobenzene
Concen: 50.00 ug/l
RT: 7.952 min Scan# 992
Del ta R. T. 0.001 min
Lab File: VW017631.D
Acq: 15 Dec 2020 14:03

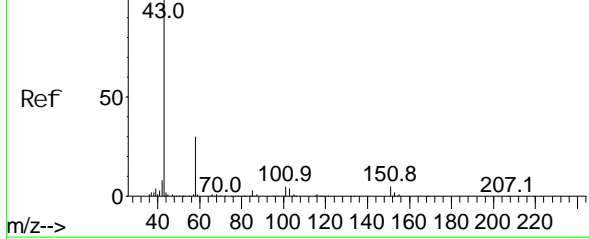
Instrument : MSVOA_W
ClientSampled : JBD-DUP-120920



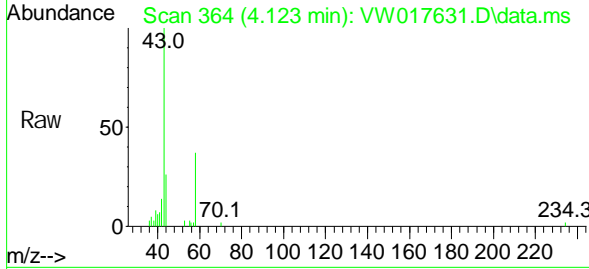
Tgt Ion: 168 Resp: 67383
Ion Ratio Lower Upper
168 100
99 60.1 40.7 61.1



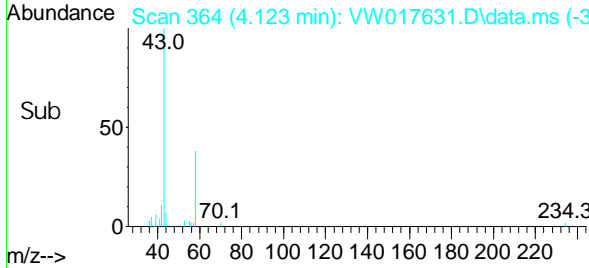
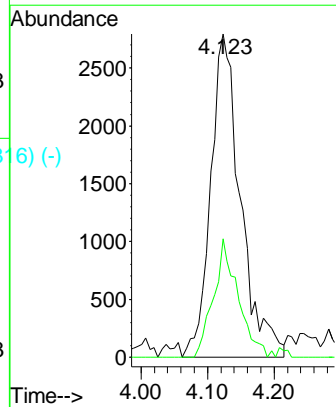
Abundance Scan 365 (4.129 min): VW017604.D\data.ms (-34371)

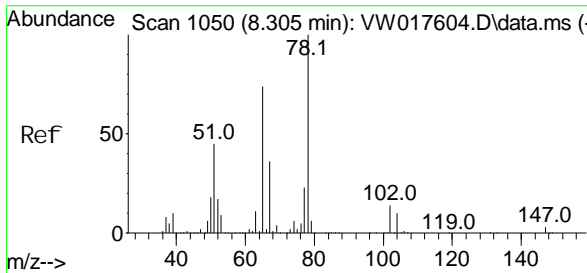


Acetone
Concen: 48.57 ug/l
RT: 4.123 min Scan# 364
Del ta R. T. -0.006 min
Lab File: VW017631.D
Acq: 15 Dec 2020 14:03



Tgt Ion: 43 Resp: 8675
Ion Ratio Lower Upper
43 100
58 36.7 25.7 38.5

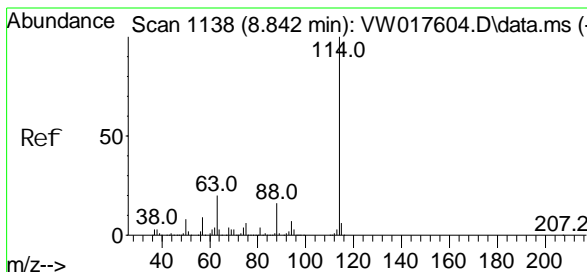
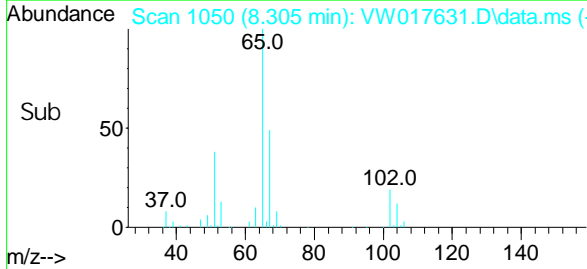
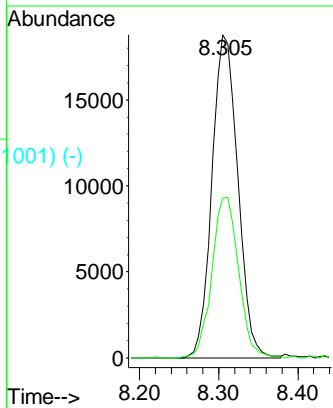
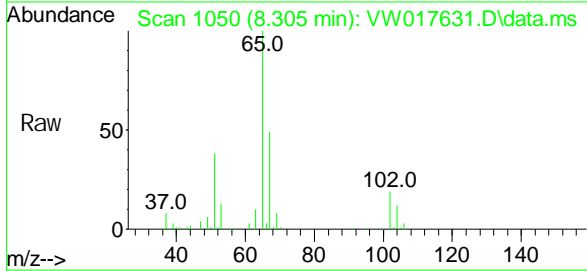




1, 2-Di chloroethane-d4
 Concen: 52.03 ug/l
 RT: 8.305 min Scan# 1050
 Delta R. T. 0.000 min
 Lab File: VW017631.D
 Acq: 15 Dec 2020 14:03

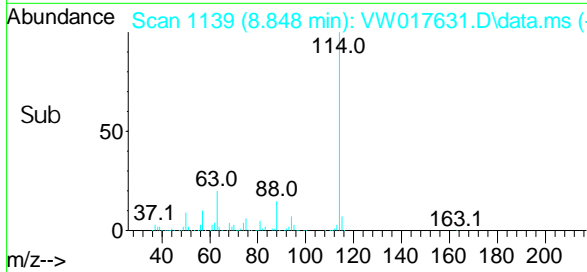
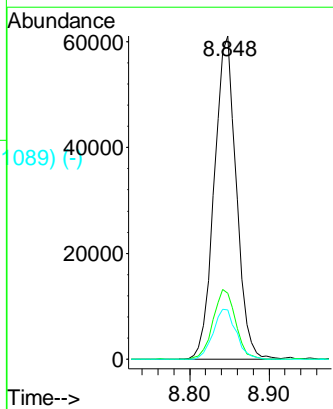
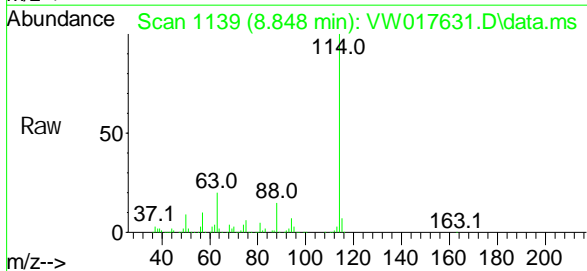
Instrument :
 MSVOA_W
ClientSampled :
 JBD-DUP-120920

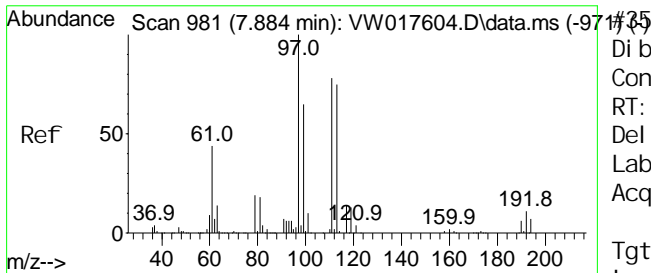
Tgt Ion: 65 Resp: 42707
 Ion Ratio Lower Upper
 65 100
 67 51.5 0.0 103.8



1, 4-Di fluorobenzene
 Concen: 50.00 ug/l
 RT: 8.848 min Scan# 1139
 Delta R. T. 0.006 min
 Lab File: VW017631.D
 Acq: 15 Dec 2020 14:03

Tgt Ion: 114 Resp: 118175
 Ion Ratio Lower Upper
 114 100
 63 20.3 0.0 35.6
 88 15.2 0.0 30.4

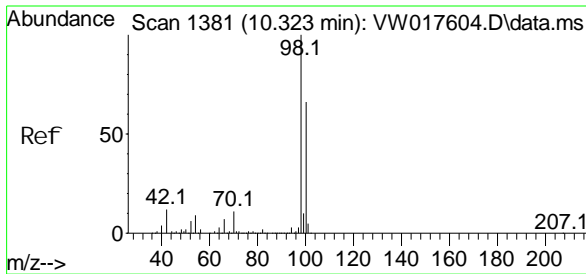
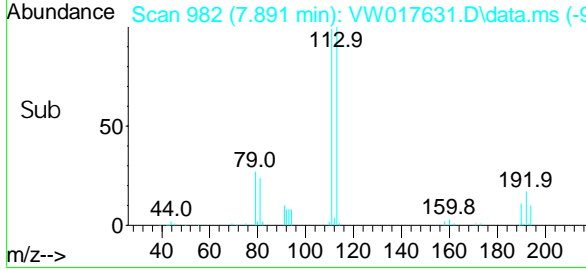
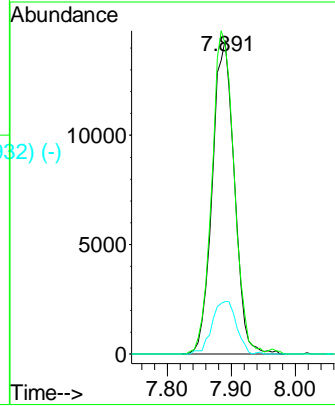
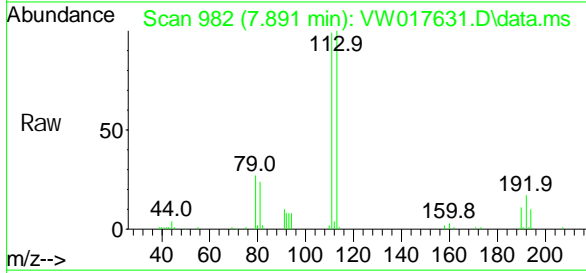




Di bromofluoromethane
 Concen: 43.75 ug/l
 RT: 7.891 min Scan# 982
 Delta R.T. 0.007 min
 Lab File: VW017631.D
 Acq: 15 Dec 2020 14:03

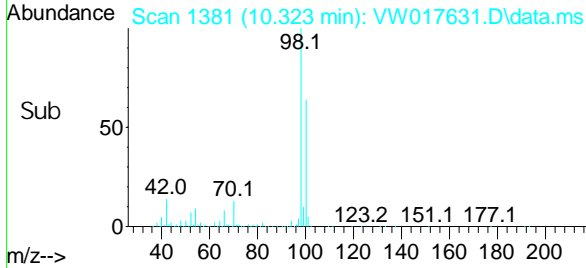
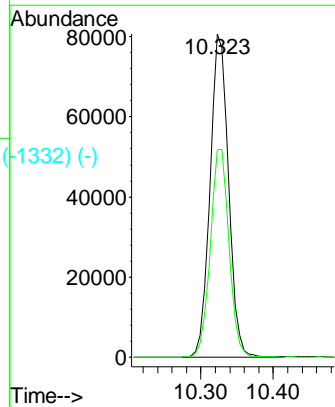
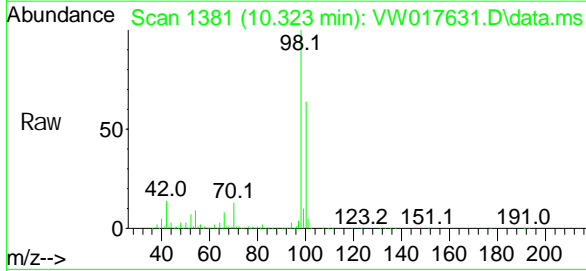
Instrument :
 MSVOA_W
ClientSampled :
 JBD-DUP-120920

Tgt Ion: 113 Resp: 34210
 Ion Ratio Lower Upper
 113 100
 111 104.0 81.4 122.2
 192 18.4 17.8 26.8

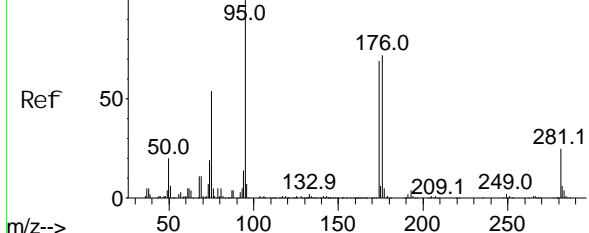


Toluene-d8
 Concen: 47.41 ug/l
 RT: 10.323 min Scan# 1381
 Delta R.T. 0.000 min
 Lab File: VW017631.D
 Acq: 15 Dec 2020 14:03

Tgt Ion: 98 Resp: 144340
 Ion Ratio Lower Upper
 98 100
 100 65.1 53.3 79.9



Abundance Scan 1758 (12.621 min): VW017604.D\data.ms (-1740) (-)



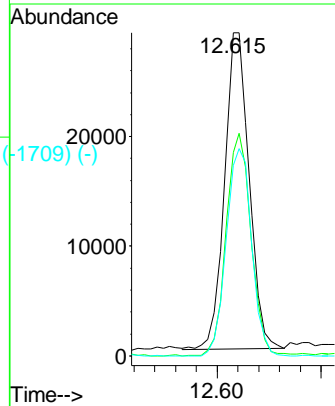
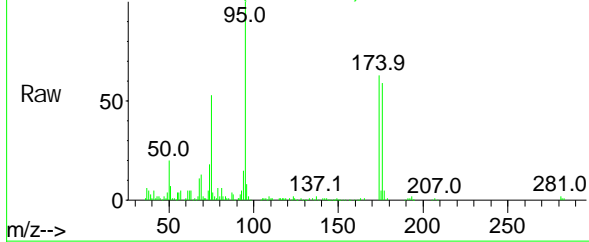
4-Bromofluorobenzene
Concen: 44.07 ug/l
RT: 12.615 min Scan# 1757
Delta R.T. -0.006 min
Lab File: VW017631.D
Acq: 15 Dec 2020 14:03

Instrument : MSVOA_W
ClientSampled : JBD-DUP-120920

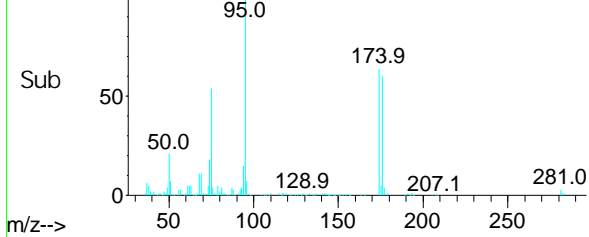
Tgt Ion: 95 Resp: 47910

Ion	Ratio	Lower	Upper
95	100		
174	71.2	0.0	180.6
176	67.3	0.0	177.6

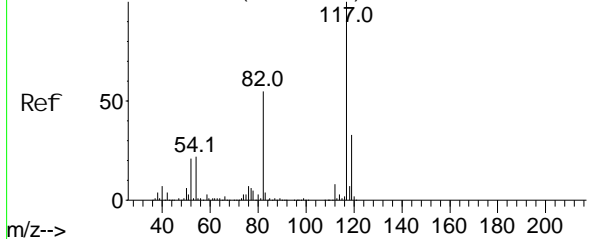
Abundance Scan 1757 (12.615 min): VW017631.D\data.ms



Abundance Scan 1757 (12.615 min): VW017631.D\data.ms (-1709) (-)



Abundance Scan 1596 (11.634 min): VW017604.D\data.ms (-1566) (-)

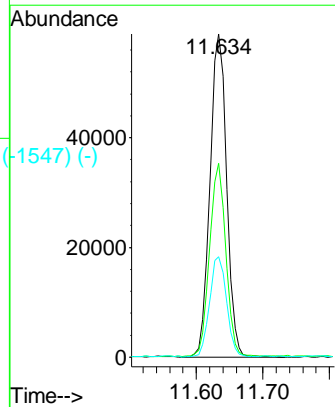
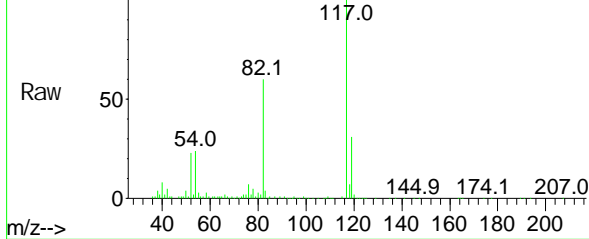


Chlorobenzene-d5
Concen: 50.00 ug/l
RT: 11.634 min Scan# 1596
Delta R.T. -0.000 min
Lab File: VW017631.D
Acq: 15 Dec 2020 14:03

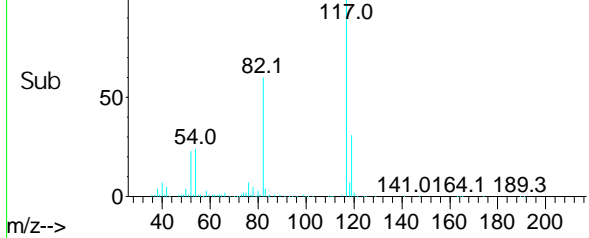
Tgt Ion: 117 Resp: 102465

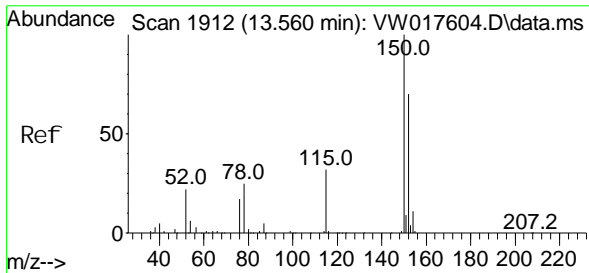
Ion	Ratio	Lower	Upper
117	100		
82	59.7	40.7	61.1
119	31.0	25.0	37.4

Abundance Scan 1596 (11.634 min): VW017631.D\data.ms



Abundance Scan 1596 (11.634 min): VW017631.D\data.ms (-1547) (-)

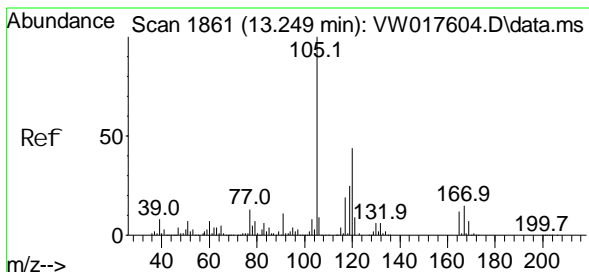
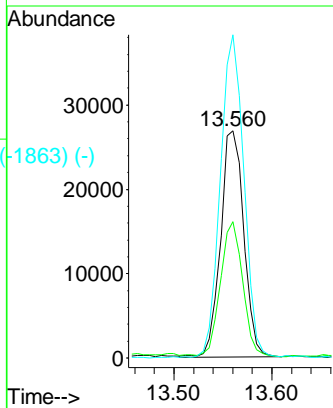
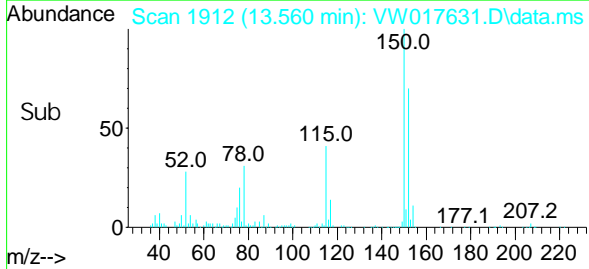
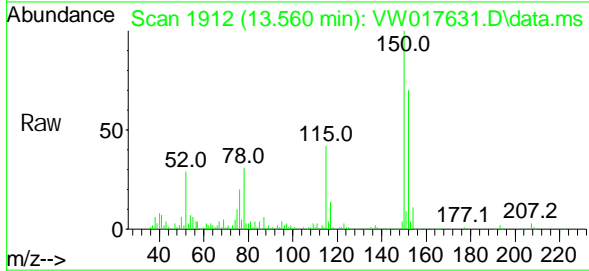




Scan 1912 (13.560 min): VW017604.D\data.ms (-1874) (-)
 1, 4-Di chl oro benzene-d4
 Concen: 50.00 ug/l
 RT: 13.560 min Scan# 1912
 Del ta R. T. 0.000 min
 Lab Fi le: VW017631.D
 Acq: 15 Dec 2020 14:03

Instrument :
 MSVOA_W
Client Sampled :
 JBD-DUP-120920

Tgt Ion	Resp	Lower	Upper
152	44229		
115	57.8	27.9	83.7
150	144.2	0.0	344.0



Scan 1861 (13.249 min): VW017604.D\data.ms (-1824) (-)
 1, 2, 4-Tri methyl benzene
 Concen: 1.51 ug/l
 RT: 13.249 min Scan# 1861
 Del ta R. T. 0.000 min
 Lab Fi le: VW017631.D
 Acq: 15 Dec 2020 14:03

Tgt Ion	Resp	Lower	Upper
105	4397		
120	59.3	23.4	70.0

