

Data Path : Z:\voasrv\HPCHEM1\MSVOA\_W\Data\WV121520\  
 Data File : WV017638.D  
 Acq On : 15 Dec 2020 17:00  
 Operator : SY/VA  
 Sample : L5091-01  
 Misc : 7.06G/5ML/MSVOA\_W/SOIL  
 ALS Vial : 13 Sample Multiplier: 1

**Instrument :**  
 MSVOA\_W  
**ClientSampleId :**  
 CHRT-20057

Quant Time: Dec 16 02:40:31 2020  
 Quant Method : Z:\voasrv\HPCHEM1\MSVOA\_W\Method\82W121420S.M  
 Quant Title : SW846 8260  
 QLast Update : Mon Dec 14 12:39:23 2020  
 Response via : Initial Calibration

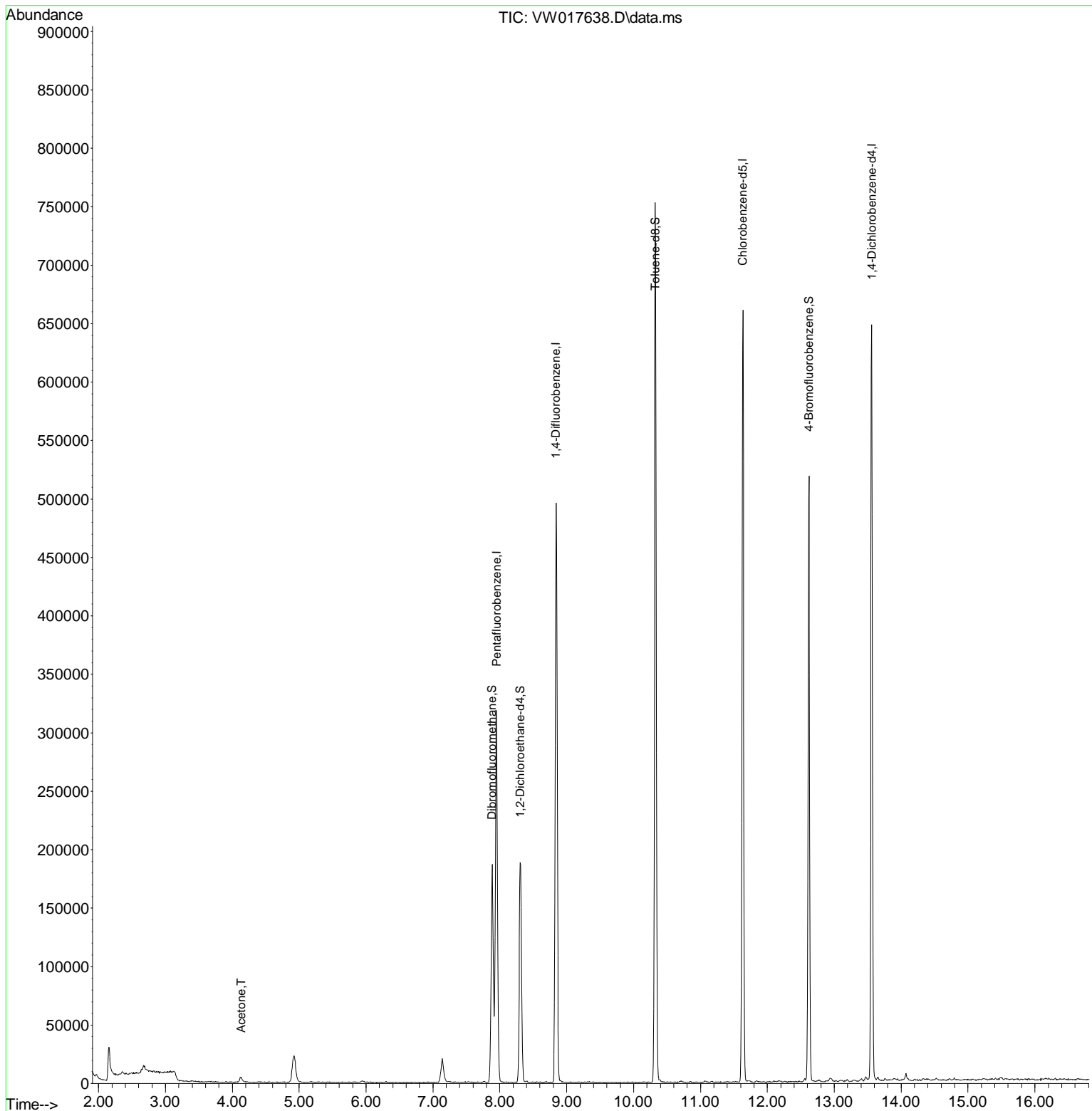
Compound	R. T.	QI on	Response	Conc	Units	Dev(Min)
-----						
Internal Standards						
1) Pentafluorobenzene	7.952	168	231501	50.00	ug/l	0.00
34) 1,4-Difluorobenzene	8.842	114	402033	50.00	ug/l	0.00
63) Chlorobenzene-d5	11.634	117	354978	50.00	ug/l	0.00
72) 1,4-Dichlorobenzene-d4	13.560	152	154835	50.00	ug/l	0.00
System Monitoring Compounds						
33) 1,2-Dichloroethane-d4	8.305	65	151330	53.66	ug/l	0.00
Spiked Amount						Recovery = 107.32%
35) Dibromofluoromethane	7.885	113	127772	48.03	ug/l	0.00
Spiked Amount						Recovery = 96.06%
50) Toluene-d8	10.323	98	488811	47.19	ug/l	0.00
Spiked Amount						Recovery = 94.38%
62) 4-Bromofluorobenzene	12.621	95	167820	45.38	ug/l	0.00
Spiked Amount						Recovery = 90.76%
Target Compounds						
16) Acetone	4.135	43	8370	13.64	ug/l	Qvalue # 87
-----						

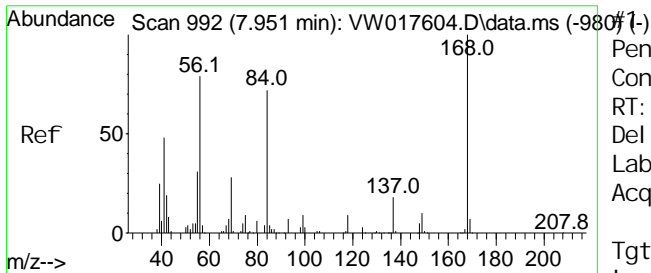
(#) = qualifier out of range (m) = manual integration (+) = signals summed

Data Path : Z:\voasrv\HPCHEM1\MSVOA\_W\Data\VW121520\  
 Data File : VW017638.D  
 Acq On : 15 Dec 2020 17:00  
 Operator : SY/VA  
 Sample : L5091-01  
 Misc : 7.06G/5ML/MSVOA\_W/SOIL  
 ALS Vial : 13 Sample Multiplier: 1

Instrument :  
 MSVOA\_W  
 Client Sampled :  
 CHRT-20057

Quant Time: Dec 16 02:40:31 2020  
 Quant Method : Z:\voasrv\HPCHEM1\MSVOA\_W\Method\82W121420S.M  
 Quant Title : SW846 8260  
 QLast Update : Mon Dec 14 12:39:23 2020  
 Response via : Initial Calibration

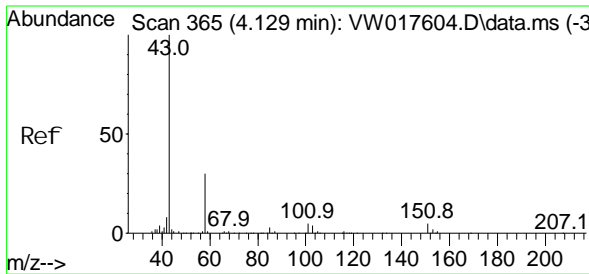
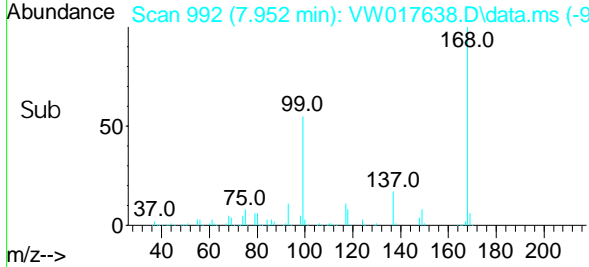
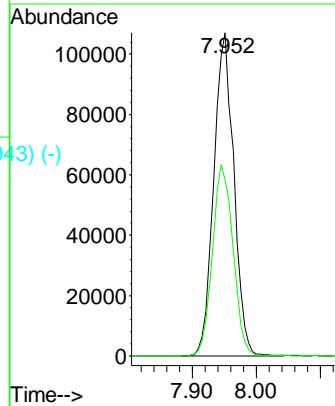
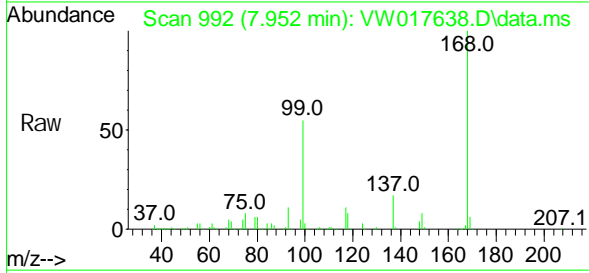




Pentaf luorobenzene  
 Concen: 50.00 ug/l  
 RT: 7.952 min Scan# 992  
 Del ta R. T. 0.001 min  
 Lab Fi le: VW017638.D  
 Acq: 15 Dec 2020 17:00

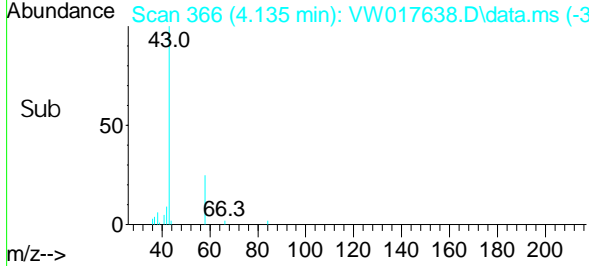
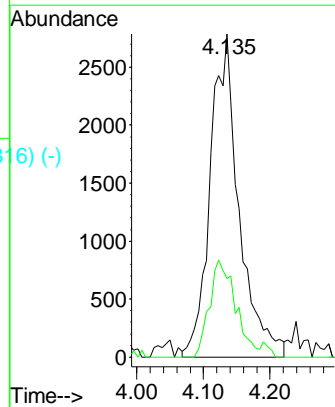
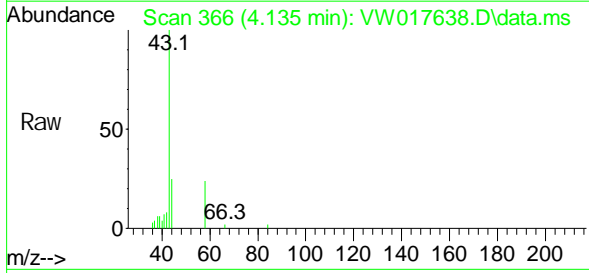
**Instrument :**  
 MSVOA\_W  
**ClientSampled :**  
 CHRT-20057

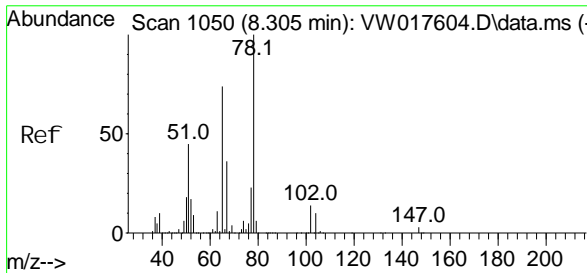
Tgt Ion: 168 Resp: 231501  
 Ion Ratio Lower Upper  
 168 100  
 99 54.7 40.7 61.1



Acetone  
 Concen: 13.64 ug/l  
 RT: 4.135 min Scan# 366  
 Del ta R. T. 0.006 min  
 Lab Fi le: VW017638.D  
 Acq: 15 Dec 2020 17:00

Tgt Ion: 43 Resp: 8370  
 Ion Ratio Lower Upper  
 43 100  
 58 24.9 25.7 38.5#

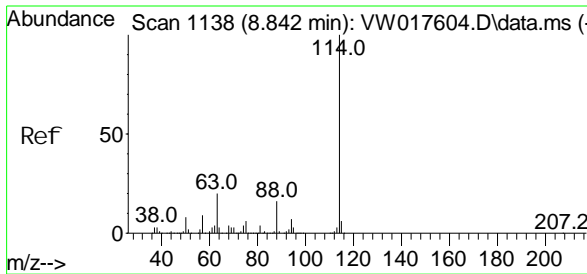
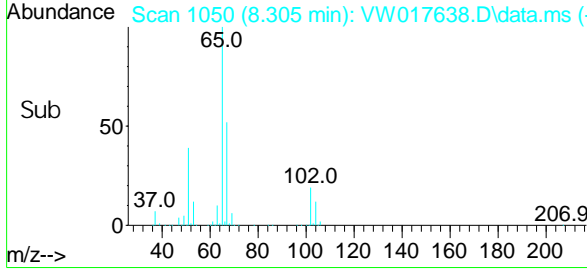
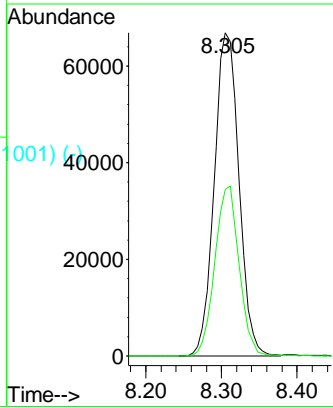
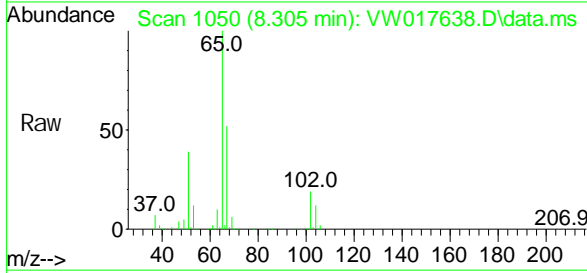




1, 2-Di chloroethane-d4  
 Concen: 53.66 ug/l  
 RT: 8.305 min Scan# 1050  
 Delta R. T. 0.000 min  
 Lab File: VW017638.D  
 Acq: 15 Dec 2020 17:00

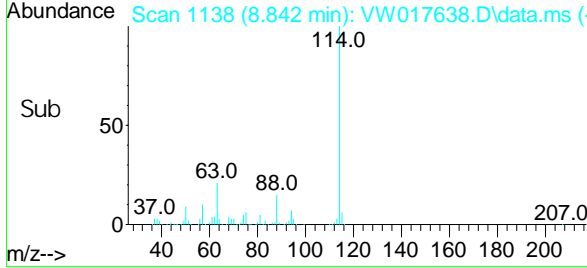
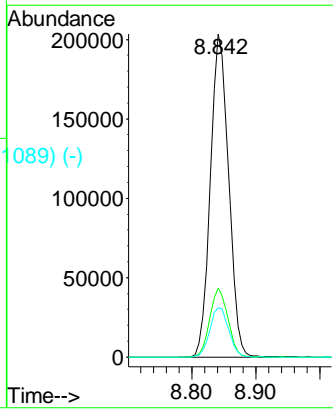
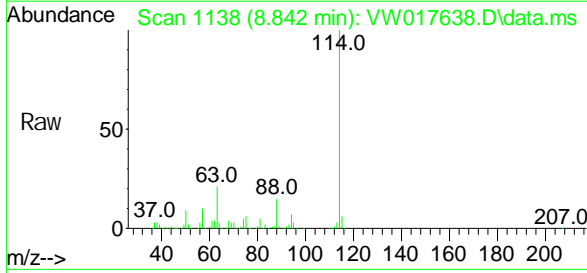
**Instrument :**  
 MSVOA\_W  
**ClientSampled :**  
 CHRT-20057

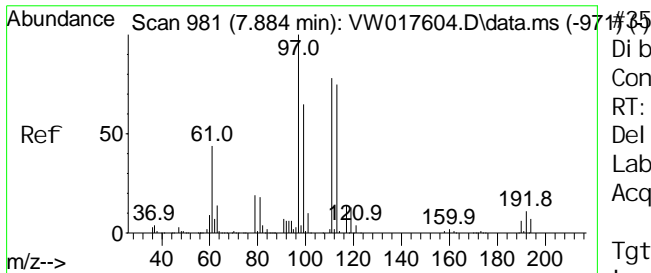
Tgt Ion: 65 Resp: 151330  
 Ion Ratio Lower Upper  
 65 100  
 67 51.6 0.0 103.8



1, 4-Di fluorobenzene  
 Concen: 50.00 ug/l  
 RT: 8.842 min Scan# 1138  
 Delta R. T. -0.000 min  
 Lab File: VW017638.D  
 Acq: 15 Dec 2020 17:00

Tgt Ion: 114 Resp: 402033  
 Ion Ratio Lower Upper  
 114 100  
 63 21.4 0.0 35.6  
 88 15.3 0.0 30.4

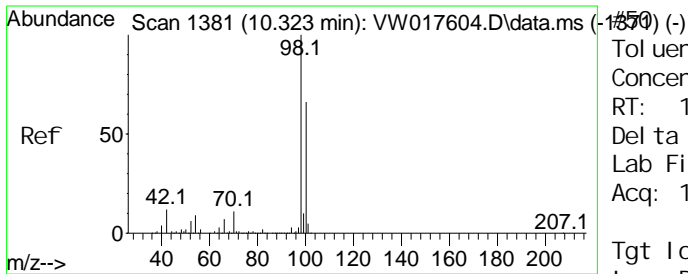
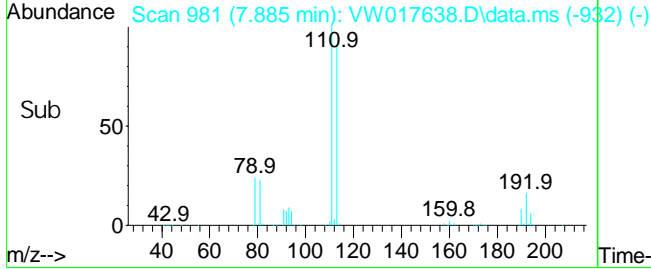
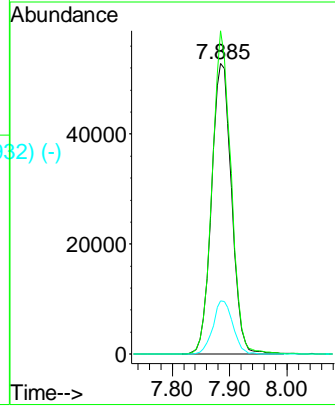
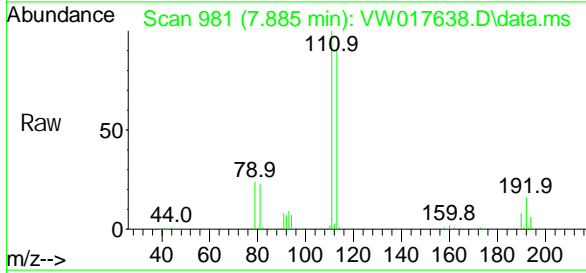




Di bromofluoromethane  
 Concen: 48.03 ug/l  
 RT: 7.885 min Scan# 981  
 Delta R.T. 0.000 min  
 Lab File: VW017638.D  
 Acq: 15 Dec 2020 17:00

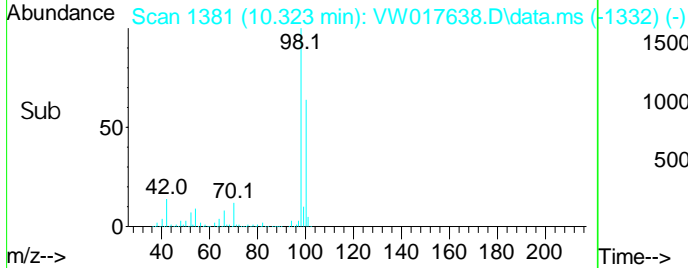
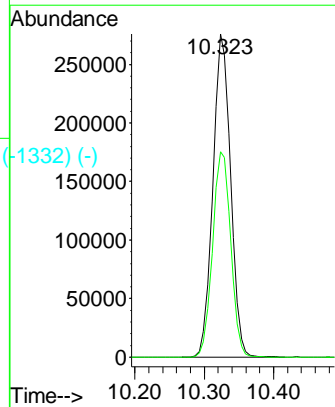
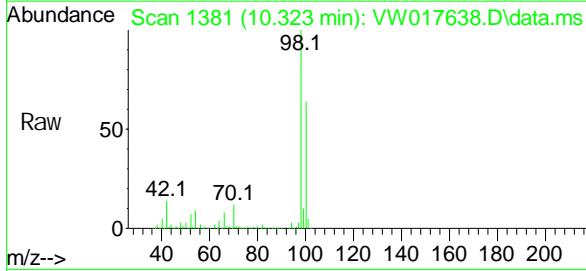
**Instrument :**  
 MSVOA\_W  
**ClientSampled :**  
 CHRT-20057

Tgt Ion	Resp	Lower	Upper
113	127772		
111	105.1	81.4	122.2
192	18.0	17.8	26.8

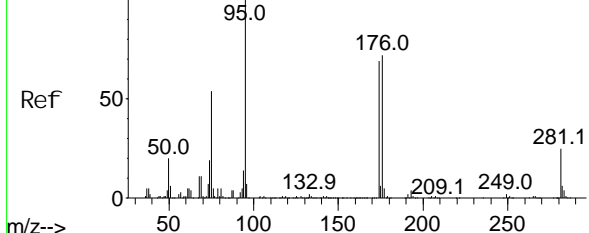


Toluene-d8  
 Concen: 47.19 ug/l  
 RT: 10.323 min Scan# 1381  
 Delta R.T. 0.000 min  
 Lab File: VW017638.D  
 Acq: 15 Dec 2020 17:00

Tgt Ion	Resp	Lower	Upper
98	488811		
100	65.2	53.3	79.9



Abundance Scan 1758 (12.621 min): VW017604.D\data.ms (-1740) (-)



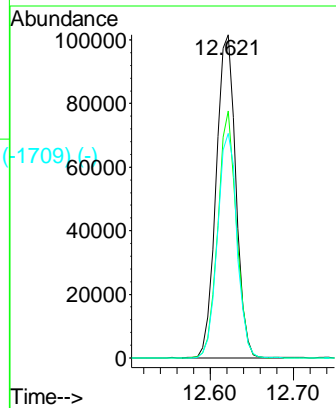
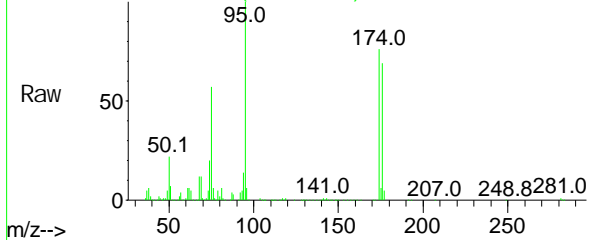
4-Bromofluorobenzene  
Concen: 45.38 ug/l  
RT: 12.621 min Scan# 1758  
Delta R.T. 0.000 min  
Lab File: VW017638.D  
Acq: 15 Dec 2020 17:00

Instrument : MSVOA\_W  
Client Sampled : CHERT-20057

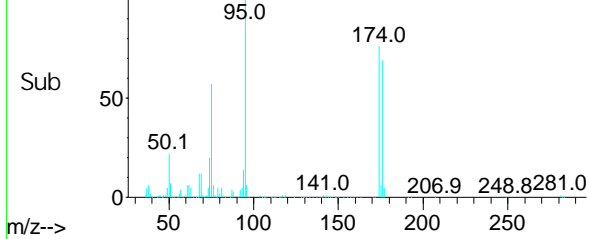
Tgt Ion: 95 Resp: 167820

Ion	Ratio	Lower	Upper
95	100		
174	72.2	0.0	180.6
176	69.0	0.0	177.6

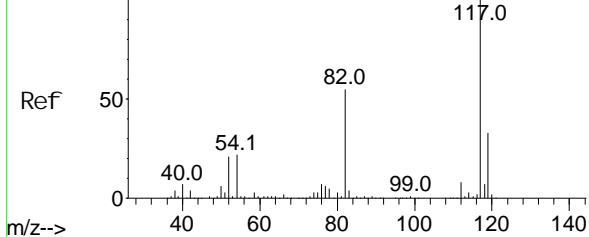
Abundance Scan 1758 (12.621 min): VW017638.D\data.ms



Abundance Scan 1758 (12.621 min): VW017638.D\data.ms (-1709) (-)



Abundance Scan 1596 (11.634 min): VW017604.D\data.ms (-1566) (-)

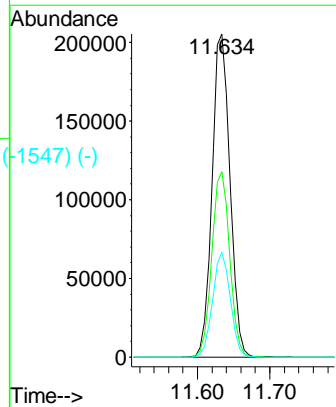
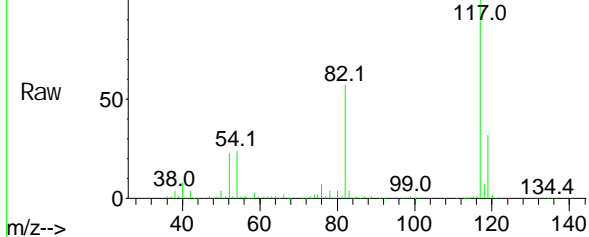


Chlorobenzene-d5  
Concen: 50.00 ug/l  
RT: 11.634 min Scan# 1596  
Delta R.T. -0.000 min  
Lab File: VW017638.D  
Acq: 15 Dec 2020 17:00

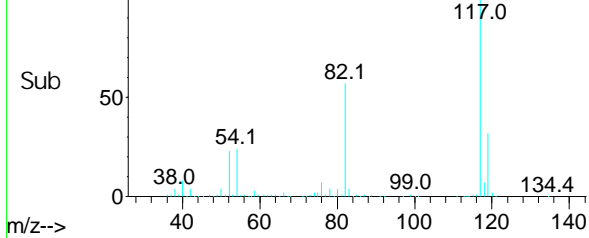
Tgt Ion: 117 Resp: 354978

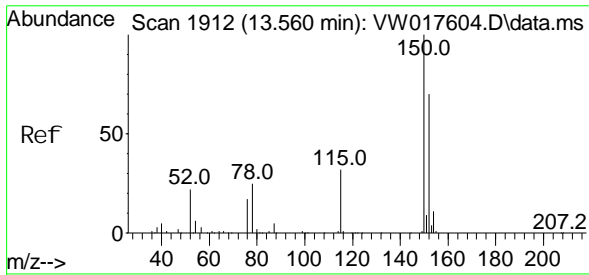
Ion	Ratio	Lower	Upper
117	100		
82	57.4	40.7	61.1
119	32.4	25.0	37.4

Abundance Scan 1596 (11.634 min): VW017638.D\data.ms



Abundance Scan 1596 (11.634 min): VW017638.D\data.ms (-1547) (-)





Scan 1912 (13.560 min): VW017604.D\data.ms (-1863) (-)  
 1, 4-Di chlorobenzene-d4  
 Concen: 50.00 ug/l  
 RT: 13.560 min Scan# 1912  
 Delta R.T. 0.000 min  
 Lab File: VW017638.D  
 Acq: 15 Dec 2020 17:00

**Instrument :**  
 MSVOA\_W  
**ClientSampleId :**  
 CHRT-20057

Tgt Ion	Resp	Lower	Upper
152	154835		
152	100		
115	61.5	27.9	83.7
150	159.5	0.0	344.0

