

Data Path : Z:\VOASRV\HPCHEM1\MSVOA W\DATA\VW121618\
 Data File : VW007488.D
 Acq On : 13 Dec 2018 15:10
 Operator : SY/AP
 Sample : J6319-09RE
 Misc : 4.24G/5ML/MSVOA W/SOIL
 ALS Vial : 6 Sample Multiplier: 1

Instrument :
 MSVOA_W
 ClientSampleId :
 063_SW-E-1

Quant Time: Dec 14 04:01:23 2018
 Quant Method : Z:\VOASRV\HPCHEM1\MSVOA_W\METHOD\82W121118S.M
 Quant Title : SW846 8260
 QLast Update : Tue Dec 11 02:58:16 2018
 Response via : Initial Calibration

Internal Standards	R.T.	QIon	Response	Conc	Units	Dev(Min)
1) Pentafluorobenzene	7.95	168	87796	50.00	ug/l	0.00
34) 1,4-Difluorobenzene	8.84	114	144925	50.00	ug/l	0.00
63) Chlorobenzene-d5	11.63	117	122284	50.00	ug/l	0.00
72) 1,4-Dichlorobenzene-d4	13.56	152	50352	50.00	ug/l	0.00

System Monitoring Compounds

33) 1,2-Dichloroethane-d4	8.30	65	36296	37.26	ug/l	0.00
Spiked Amount				50.000		
			Recovery	=	74.52%	
35) Dibromofluoromethane	7.88	113	34043	38.80	ug/l	0.00
Spiked Amount				50.000		
			Recovery	=	77.60%	
50) Toluene-d8	10.32	98	117370	35.68	ug/l	0.00
Spiked Amount				50.000		
			Recovery	=	71.36%	
62) 4-Bromofluorobenzene	12.62	95	42558	35.19	ug/l	0.00
Spiked Amount				50.000		
			Recovery	=	70.38%	

Target Compounds

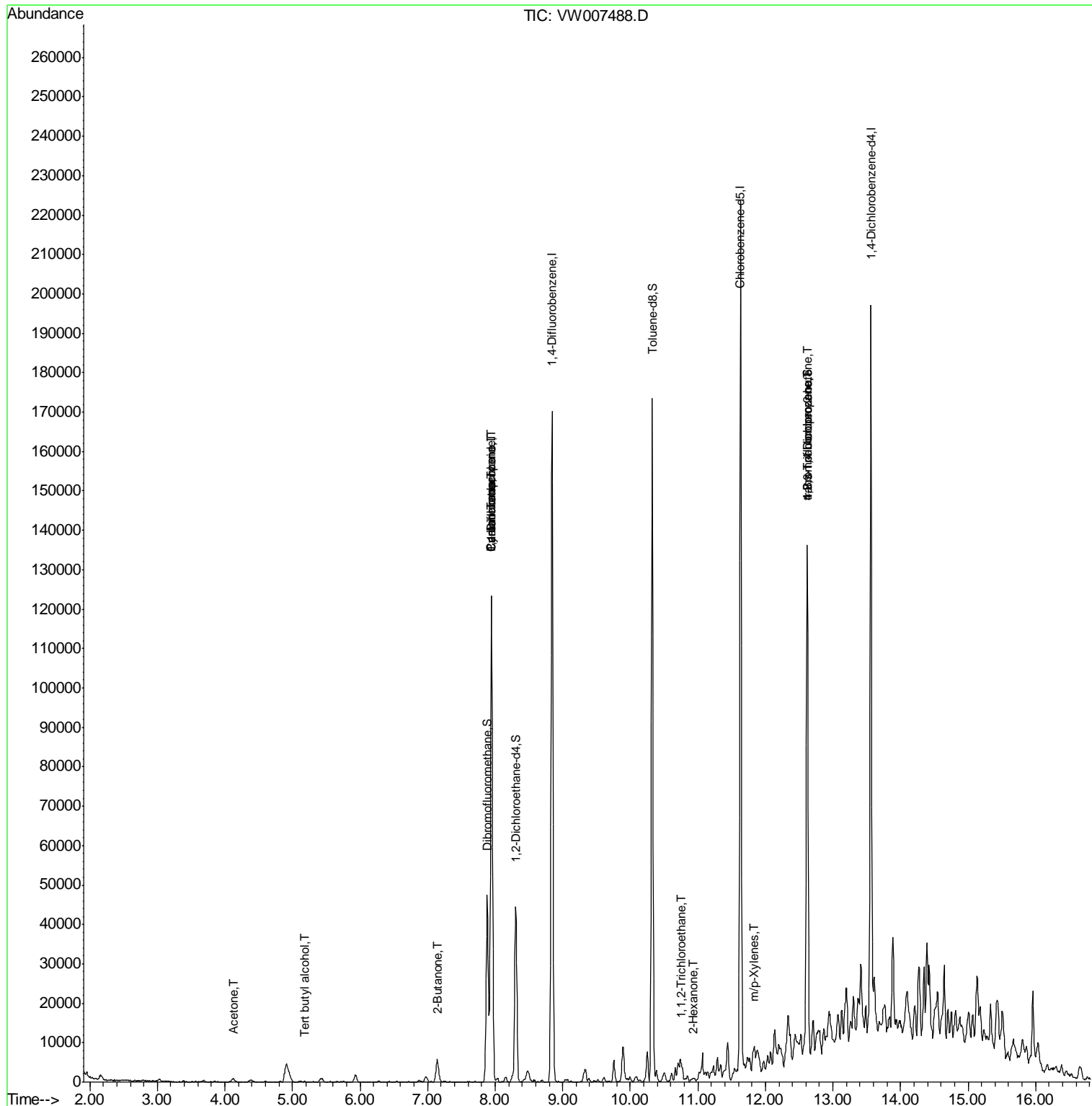
						Qvalue
11) Tert butyl alcohol	5.17	59	151	2.257	ug/l #	74
16) Acetone	4.13	43	1726	10.145	ug/l	98
25) 2-Butanone	7.15	43	259	1.166	ug/l #	45
31) Cyclohexane	7.95	56	2522	1.667	ug/l #	38
36) 1,1-Dichloropropene	7.95	75	6775	5.125	ug/l #	48
38) Carbon Tetrachloride	7.95	117	9294	6.461	ug/l #	18
55) 1,1,2-Trichloroethane	10.76	97	749	1.141	ug/l #	24
59) 2-Hexanone	10.93	43	482	1.575	ug/l #	24
68) m/p-Xylenes	11.84	106	1875	1.101	ug/l	96
76) 1,2,3-Trichloropropane	12.62	75	20826	50.163	ug/l #	1
81) trans-1,4-Dichloro-2-buten	12.62	75	20826	110.810	ug/l #	7

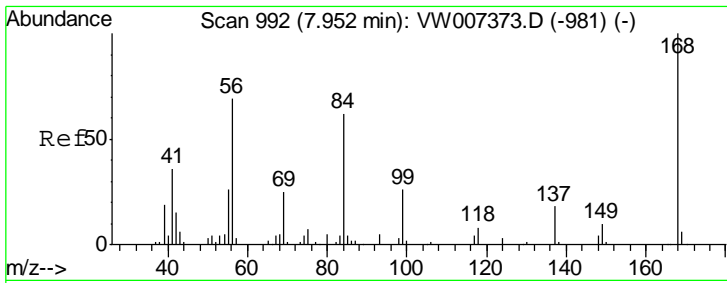
(#) = qualifier out of range (m) = manual integration (+) = signals summed

Data Path : Z:\VOASRV\HPCHEM1\MSVOA W\DATA\VW121618\
 Data File : VW007488.D
 Acq On : 13 Dec 2018 15:10
 Operator : SY/AP
 Sample : J6319-09RE
 Misc : 4.24G/5ML/MSVOA W/SOIL
 ALS Vial : 6 Sample Multiplier: 1

Instrument :
 MSVOA_W
 Client Sampled :
 063_SW-E-1

Quant Time: Dec 14 04:01:23 2018
 Quant Method : Z:\VOASRV\HPCHEM1\MSVOA_W\METHOD\82W121118S.M
 Quant Title : SW846 8260
 QLast Update : Tue Dec 11 02:58:16 2018
 Response via : Initial Calibration

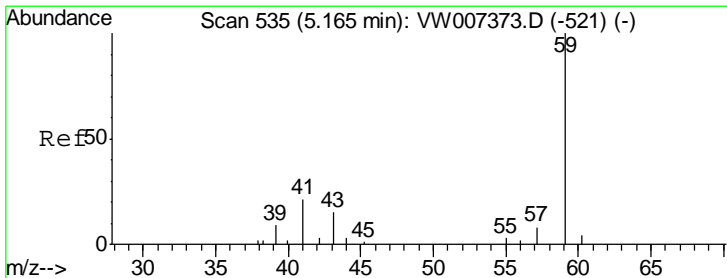
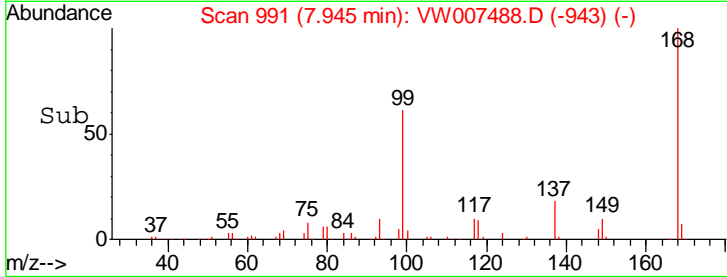
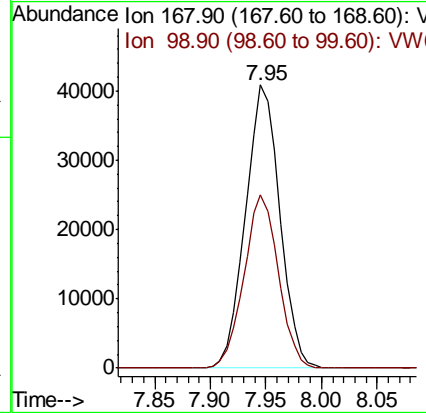
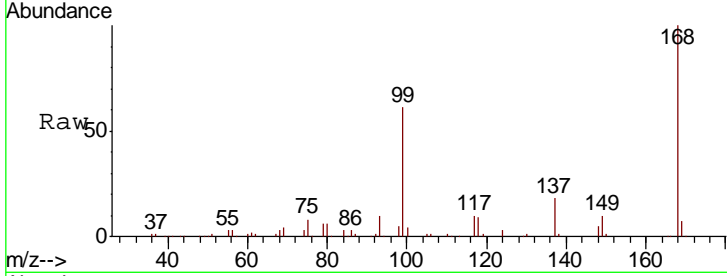




#1
 Pentafluorobenzene
 Concen: 50.000 ug/l
 RT: 7.95 min Scan# 991
 Delta R.T. -0.01 min
 Lab File: VW007488.D
 Acq: 13 Dec 2018 15:10

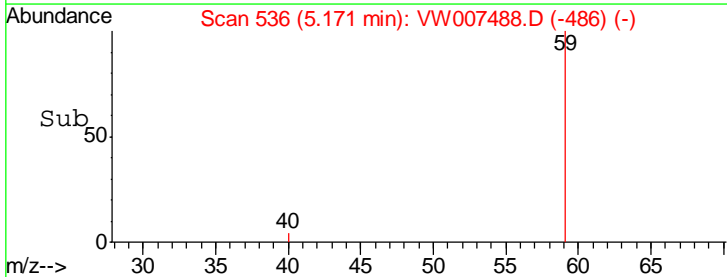
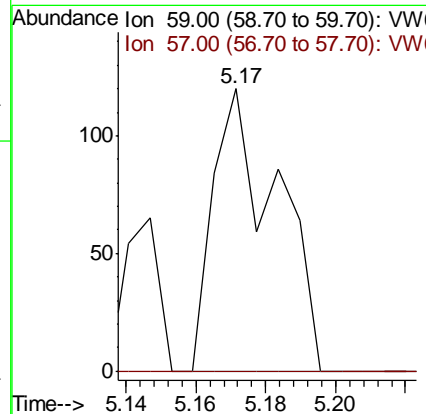
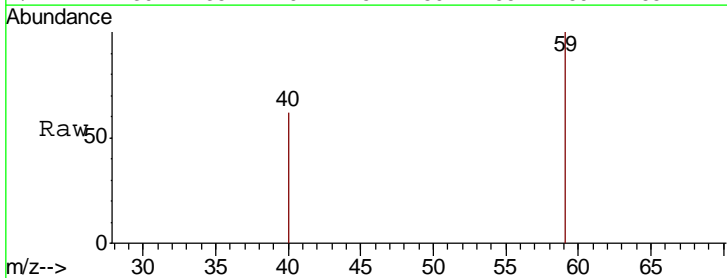
Instrument :
 MSVOA_W
 ClientSampled :
 063_SW-E-1

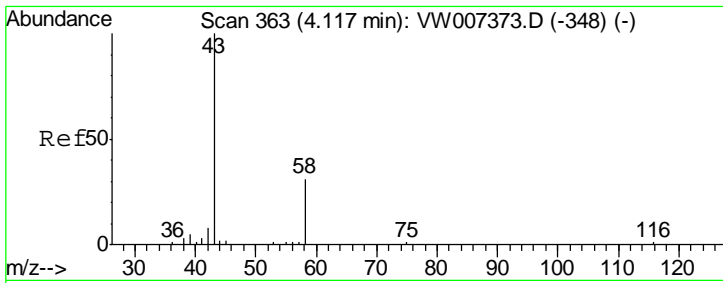
Tgt Ion: 168 Resp: 87796
 Ion Ratio Lower Upper
 168 100
 99 61.1 48.3 72.5



#11
 Tert butyl alcohol
 Concen: 2.257 ug/l
 RT: 5.17 min Scan# 536
 Delta R.T. 0.01 min
 Lab File: VW007488.D
 Acq: 13 Dec 2018 15:10

Tgt Ion: 59 Resp: 151
 Ion Ratio Lower Upper
 59 100
 57 0.0 7.6 11.4#

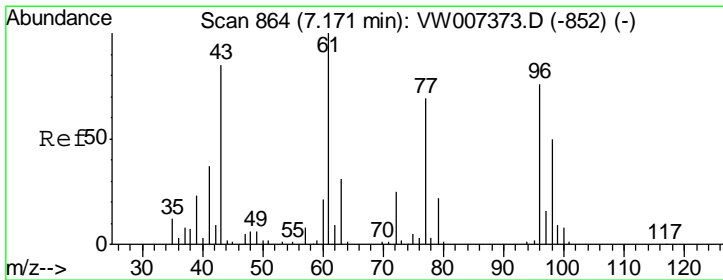
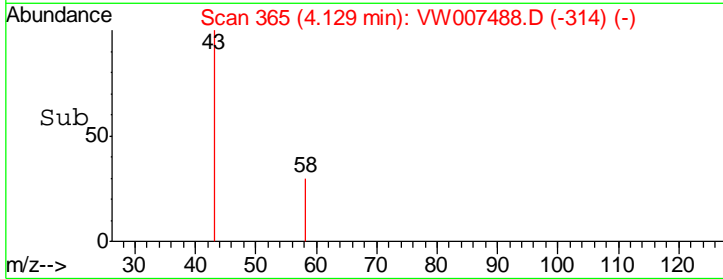
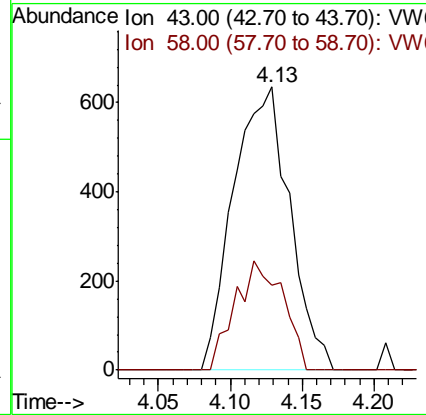
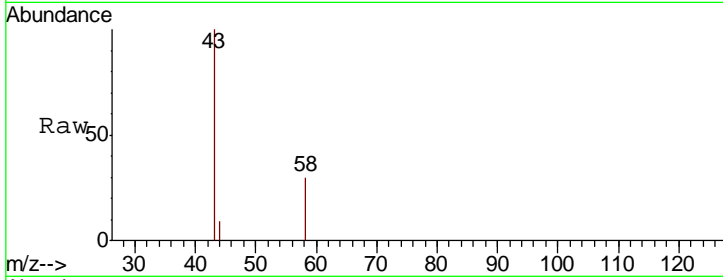




#16
 Acetone
 Concen: 10.145 ug/l
 RT: 4.13 min Scan# 365
 Delta R.T. 0.01 min
 Lab File: VW007488.D
 Acq: 13 Dec 2018 15:10

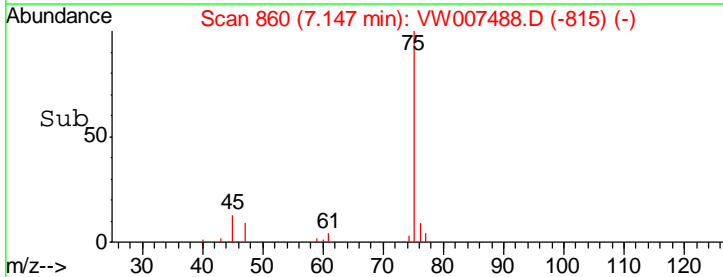
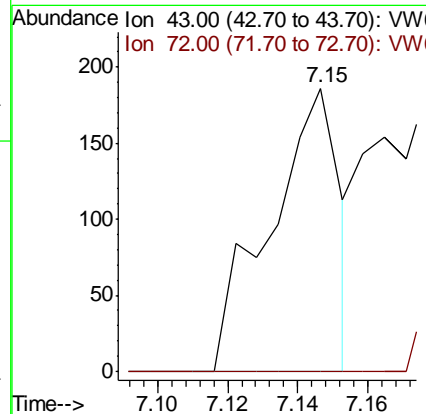
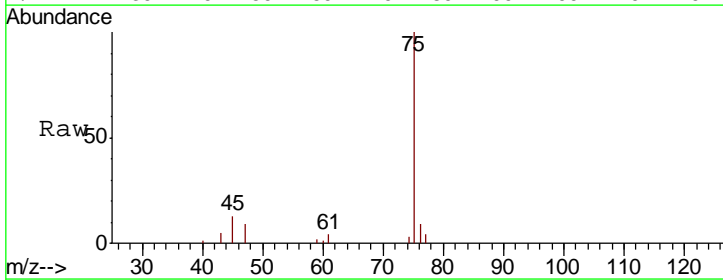
Instrument :
 MSVOA_W
 ClientSampled :
 063_SW-E-1

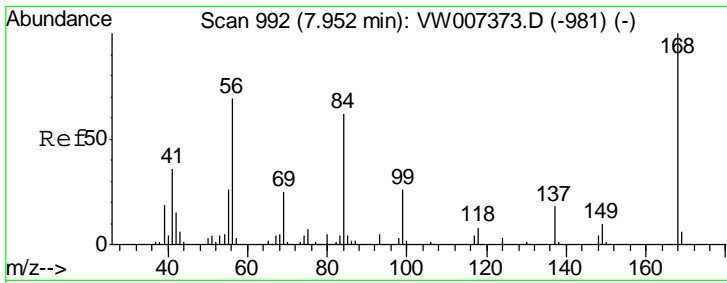
Tgt Ion	Resp	Lower	Upper
43	1726		
58	30.2	24.9	37.3



#25
 2-Butanone
 Concen: 1.166 ug/l
 RT: 7.15 min Scan# 860
 Delta R.T. -0.02 min
 Lab File: VW007488.D
 Acq: 13 Dec 2018 15:10

Tgt Ion	Resp	Lower	Upper
43	259		
72	0.0	23.4	35.2#

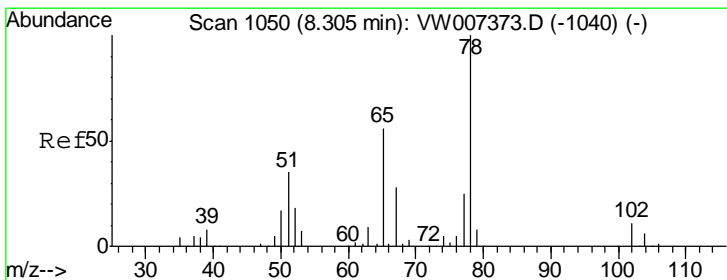
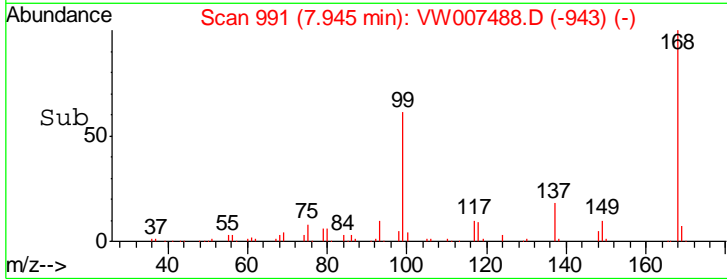
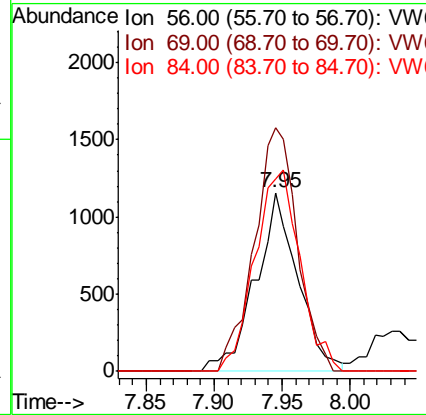
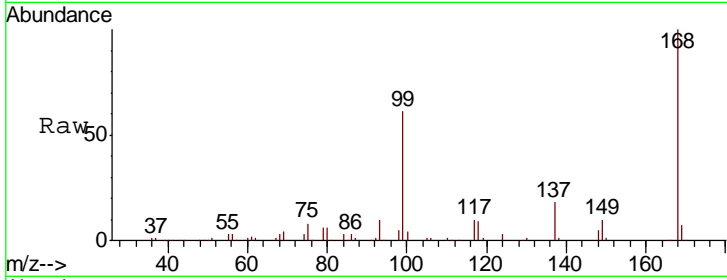




#31
 Cyclohexane
 Concen: 1.667 ug/l
 RT: 7.95 min Scan# 991
 Delta R.T. -0.01 min
 Lab File: VW007488.D
 Acq: 13 Dec 2018 15:10

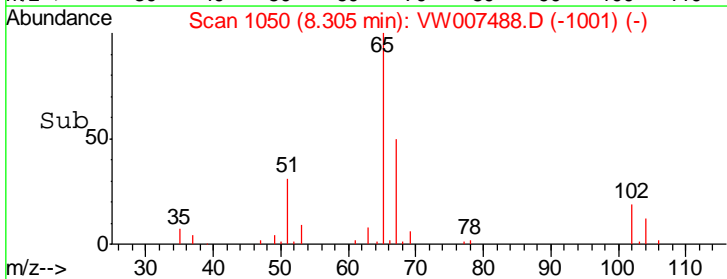
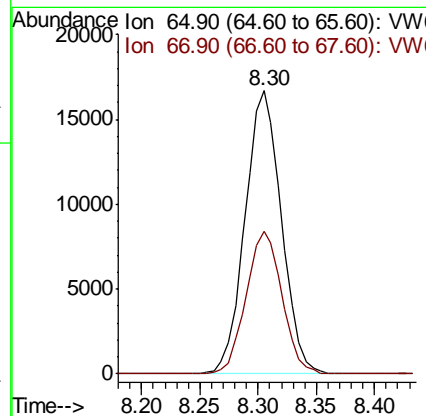
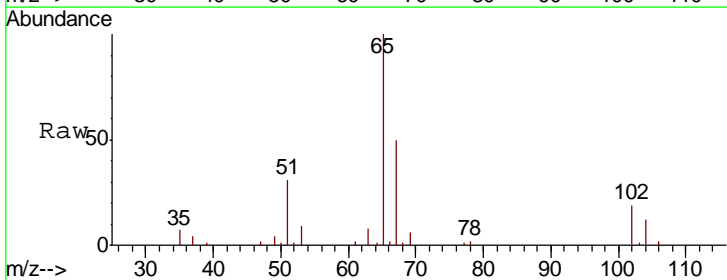
Instrument :
 MSVOA_W
 ClientSampled :
 063_SW-E-1

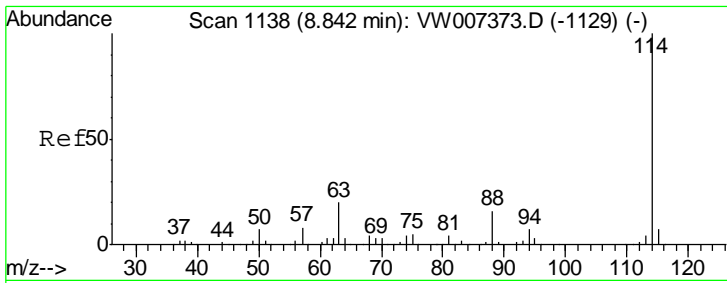
Tgt Ion	Resp	Lower	Upper
56	100		
69	136.1	28.9	43.3#
84	107.4	71.8	107.6



#33
 1,2-Dichloroethane-d4
 Concen: 37.264 ug/l
 RT: 8.30 min Scan# 1050
 Delta R.T. -0.00 min
 Lab File: VW007488.D
 Acq: 13 Dec 2018 15:10

Tgt Ion	Resp	Lower	Upper
65	100		
67	49.6	0.0	101.6

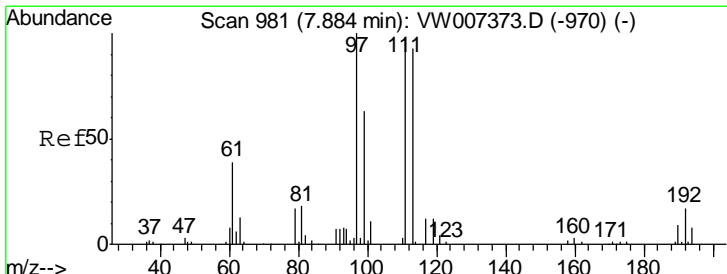
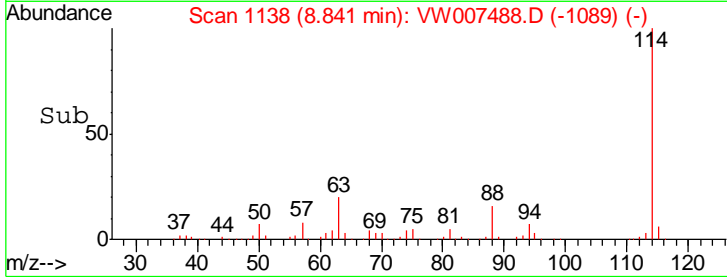
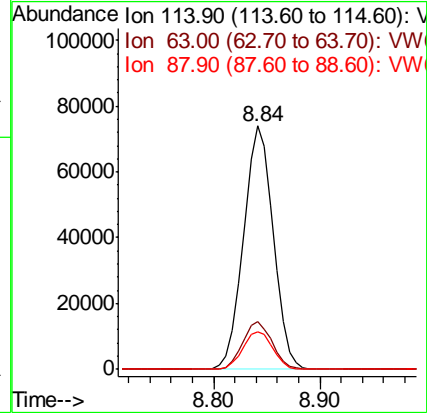
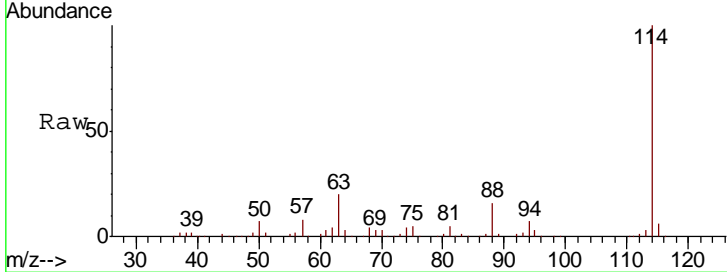




#34
 1,4-Difluorobenzene
 Concen: 50.000 ug/l
 RT: 8.84 min Scan# 1138
 Delta R.T. -0.00 min
 Lab File: VW007488.D
 Acq: 13 Dec 2018 15:10

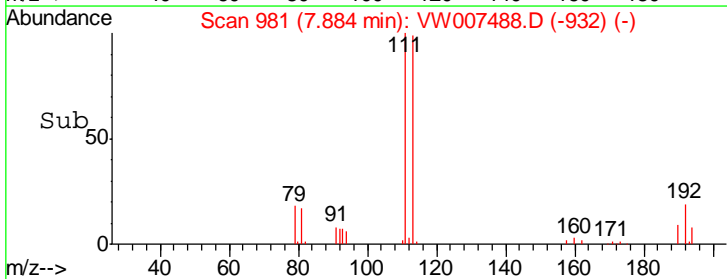
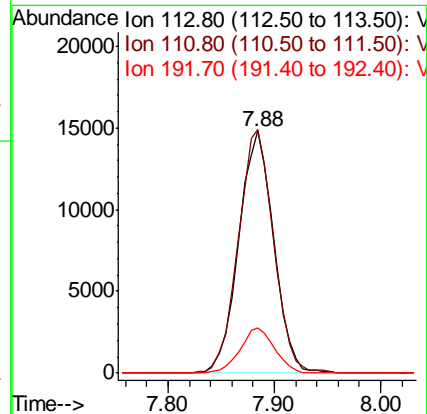
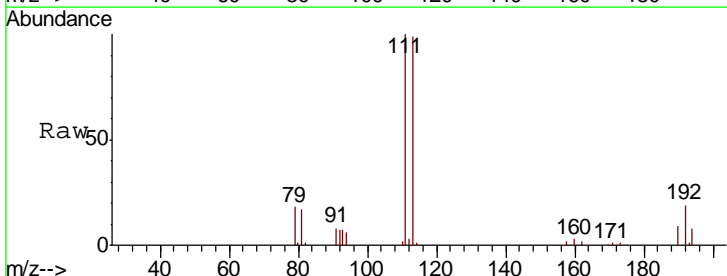
Instrument :
 MSVOA_W
 ClientSampled :
 063_SW-E-1

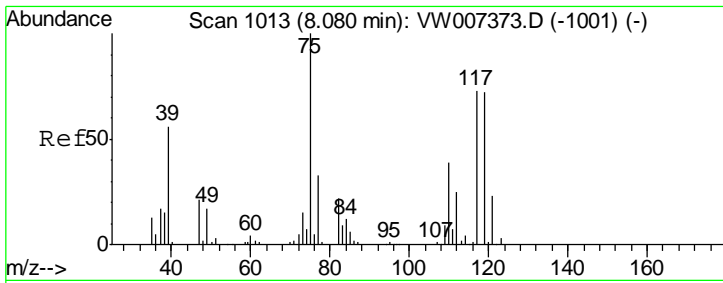
Tgt Ion	Resp	Lower	Upper
114	144925		
63	19.8	0.0	39.6
88	15.6	0.0	31.4



#35
 Dibromofluoromethane
 Concen: 38.805 ug/l
 RT: 7.88 min Scan# 981
 Delta R.T. -0.00 min
 Lab File: VW007488.D
 Acq: 13 Dec 2018 15:10

Tgt Ion	Resp	Lower	Upper
113	34043		
111	101.4	81.1	121.7
192	18.4	14.6	21.8

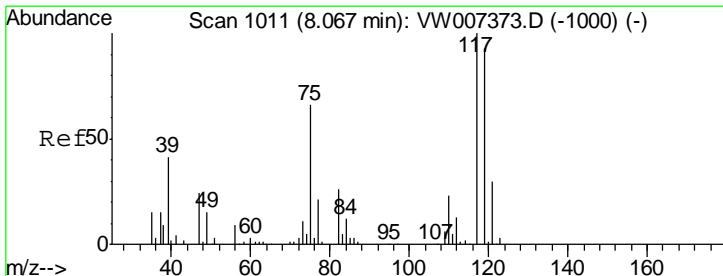
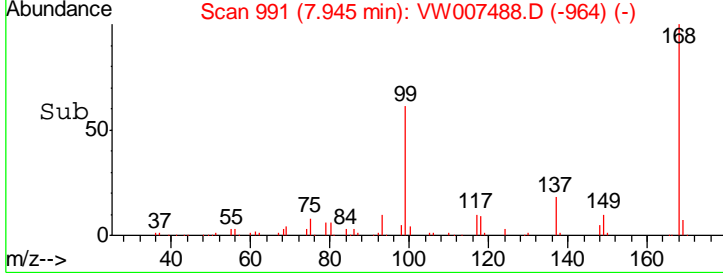
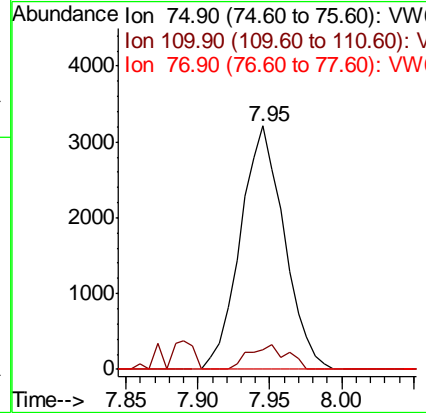
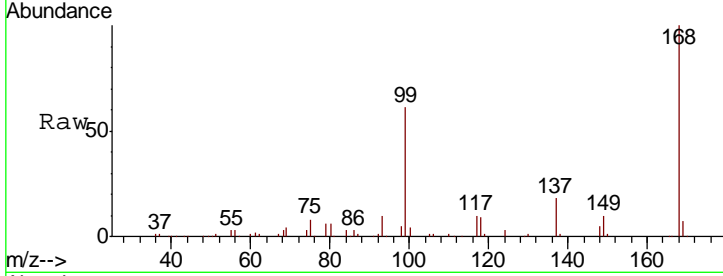




#36
 1,1-Dichloropropene
 Concen: 5.125 ug/l
 RT: 7.95 min Scan# 991
 Delta R.T. -0.13 min
 Lab File: VW007488.D
 Acq: 13 Dec 2018 15:10

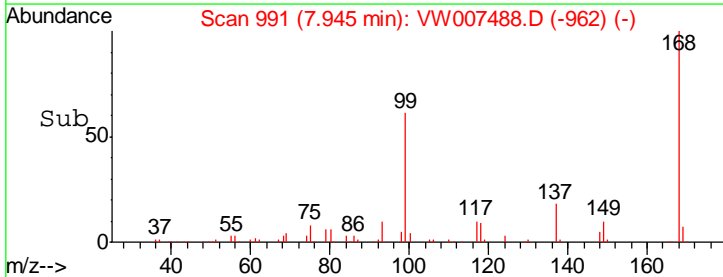
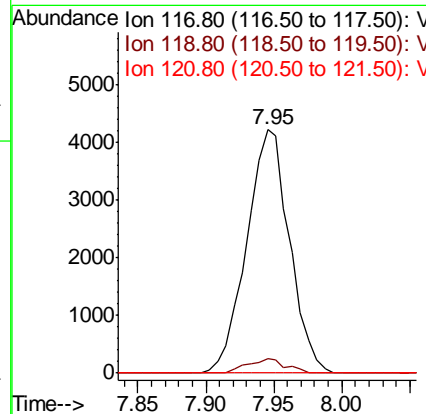
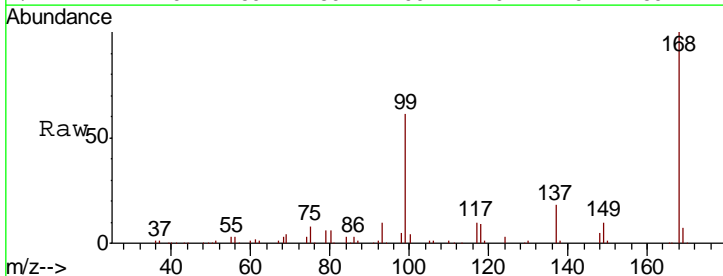
Instrument :
 MSVOA_W
 ClientSampled :
 063_SW-E-1

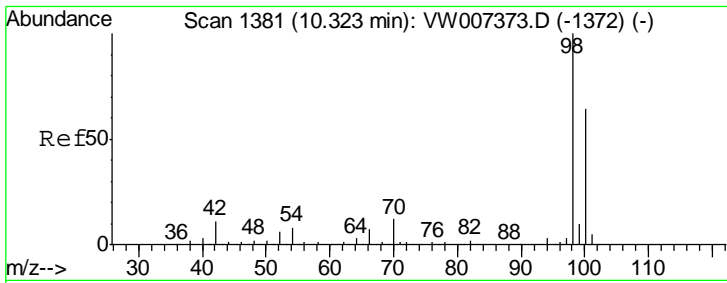
Tgt Ion	Resp	Lower	Upper
75	100		
110	8.9	18.5	55.5#
77	0.0	25.6	38.4#



#38
 Carbon Tetrachloride
 Concen: 6.461 ug/l
 RT: 7.95 min Scan# 991
 Delta R.T. -0.12 min
 Lab File: VW007488.D
 Acq: 13 Dec 2018 15:10

Tgt Ion	Resp	Lower	Upper
117	100		
119	5.8	74.3	111.5#
121	0.0	24.3	36.5#

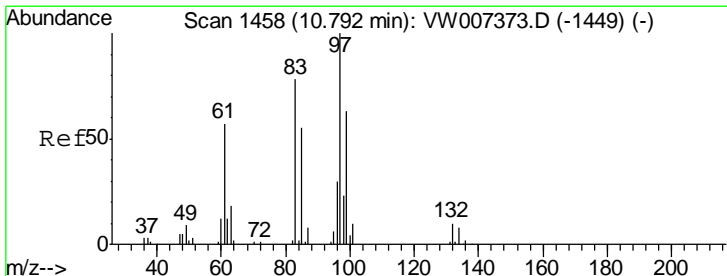
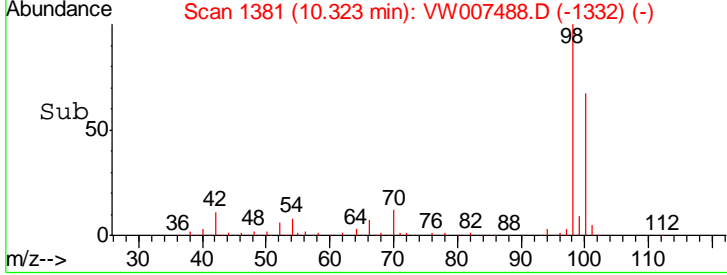
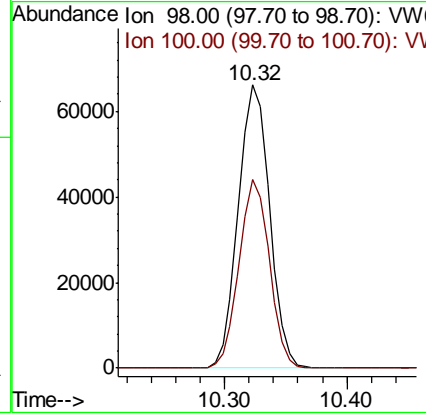
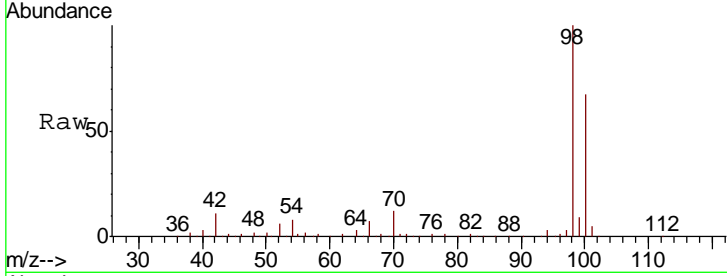




#50
 Toluene-d8
 Concen: 35.682 ug/l
 RT: 10.32 min Scan# 1381
 Delta R.T. -0.00 min
 Lab File: VW007488.D
 Acq: 13 Dec 2018 15:10

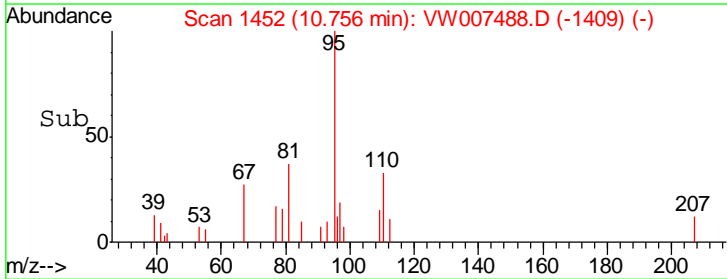
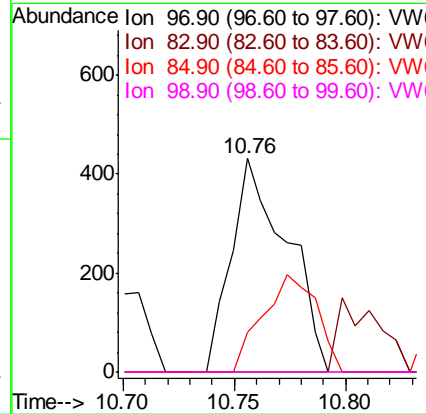
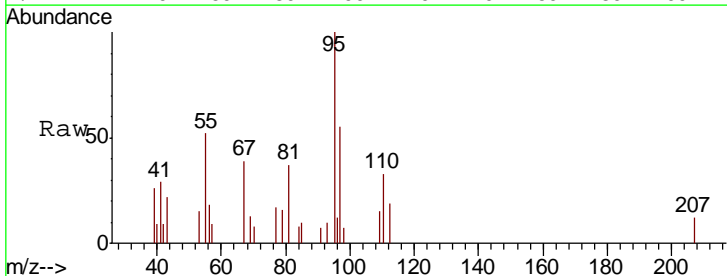
Instrument : MSVOA_W
 ClientSampled : 063_SW-E-1

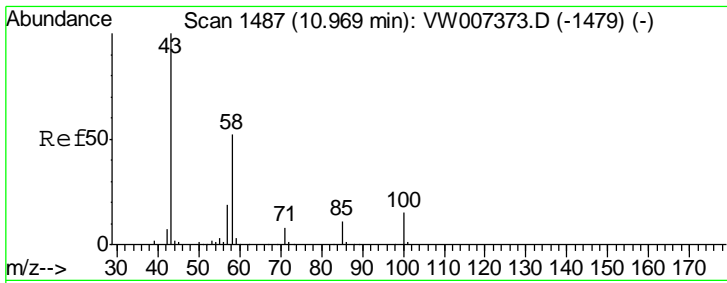
Tgt Ion	Resp	Lower	Upper
98	117370		
98	100		
100	64.7	51.8	77.8



#55
 1,1,2-Trichloroethane
 Concen: 1.141 ug/l
 RT: 10.76 min Scan# 1452
 Delta R.T. -0.04 min
 Lab File: VW007488.D
 Acq: 13 Dec 2018 15:10

Tgt Ion	Resp	Lower	Upper
97	749		
97	100		
83	0.0	62.1	93.1#
85	18.8	44.2	66.4#
99	0.0	50.2	75.4#

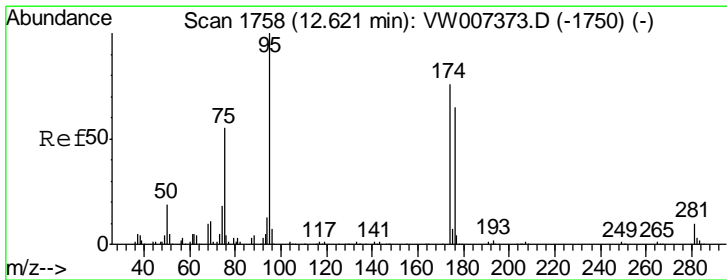
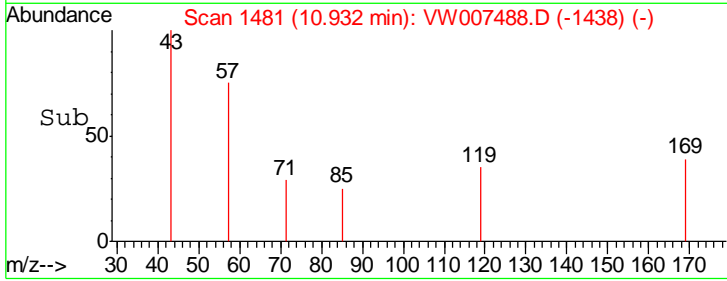
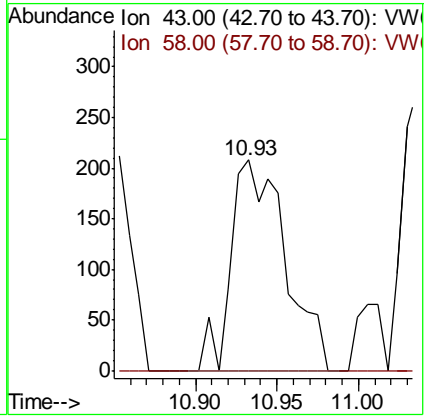
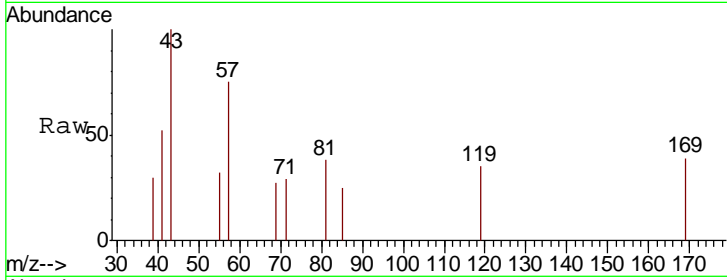




#59
 2-Hexanone
 Concen: 1.575 ug/l
 RT: 10.93 min Scan# 1481
 Delta R.T. -0.04 min
 Lab File: VW007488.D
 Acq: 13 Dec 2018 15:10

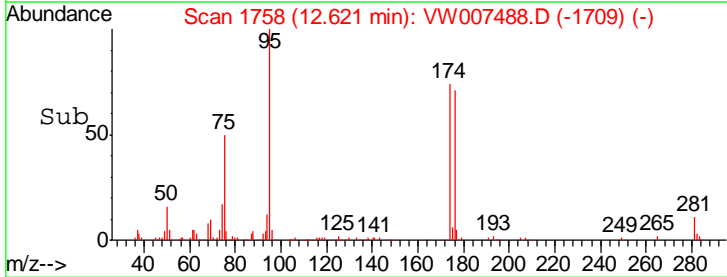
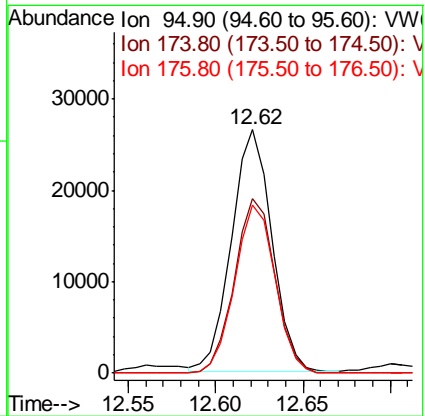
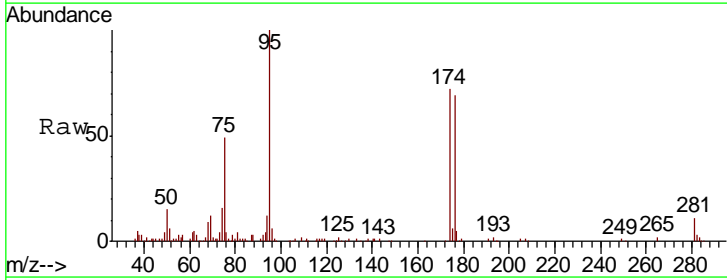
Instrument : MSVOA_W
 ClientSampled : 063_SW-E-1

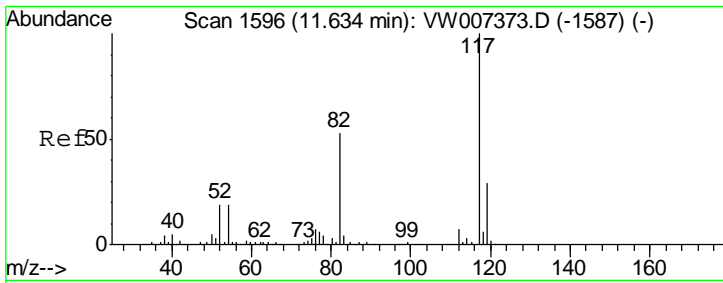
Tgt Ion	Ratio	Lower	Upper
43	100		
58	0.0	27.1	81.3#



#62
 4-Bromofluorobenzene
 Concen: 35.189 ug/l
 RT: 12.62 min Scan# 1758
 Delta R.T. -0.00 min
 Lab File: VW007488.D
 Acq: 13 Dec 2018 15:10

Tgt Ion	Ratio	Lower	Upper
95	100		
174	72.3	0.0	147.2
176	69.4	0.0	138.8

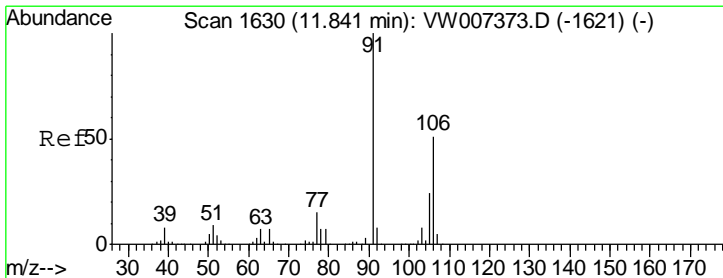
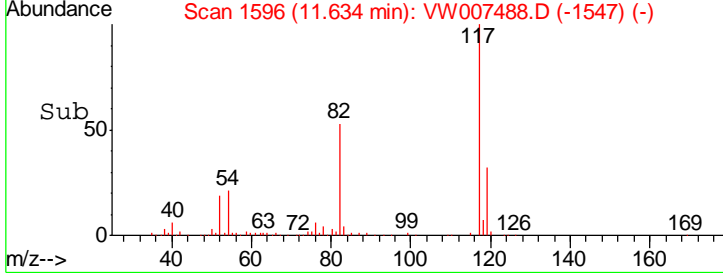
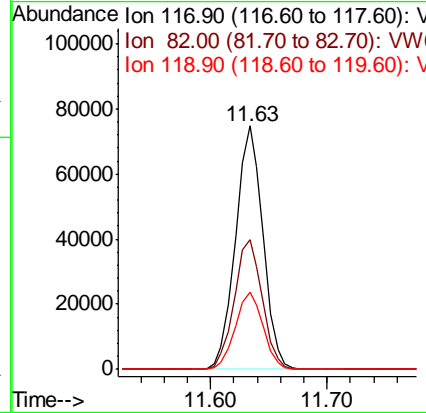
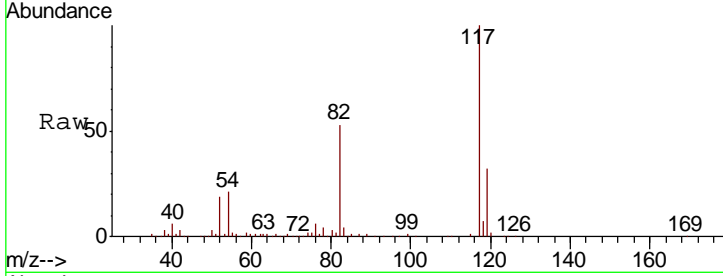




#63
 Chlorobenzene-d5
 Concen: 50.000 ug/l
 RT: 11.63 min Scan# 1596
 Delta R.T. -0.00 min
 Lab File: VW007488.D
 Acq: 13 Dec 2018 15:10

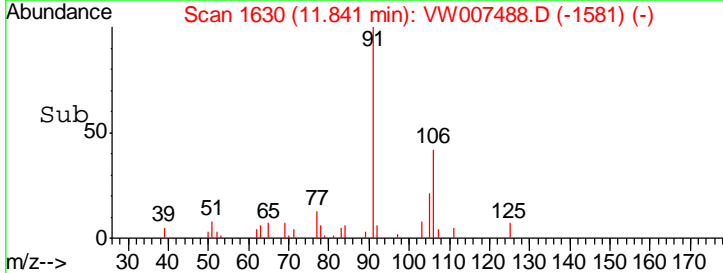
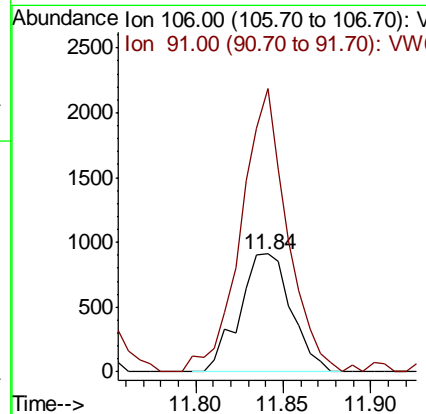
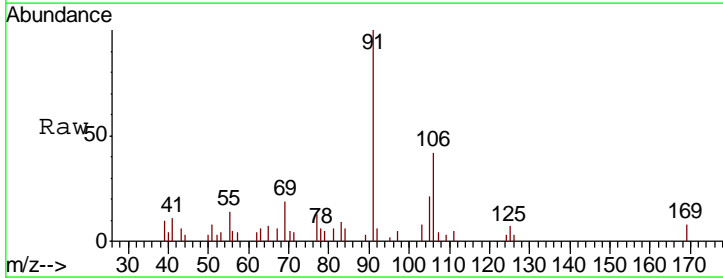
Instrument : MSVOA_W
 ClientSampled : 063_SW-E-1

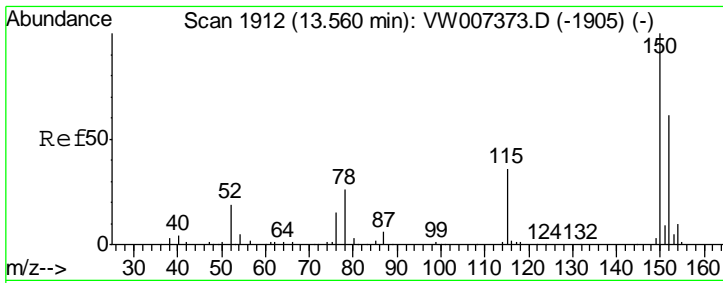
Tgt Ion	Resp	Lower	Upper
117	122284		
82	53.2	42.3	63.5
119	31.7	23.0	34.6



#68
 m/p-Xylenes
 Concen: 1.101 ug/l
 RT: 11.84 min Scan# 1630
 Delta R.T. -0.00 min
 Lab File: VW007488.D
 Acq: 13 Dec 2018 15:10

Tgt Ion	Resp	Lower	Upper
106	1875		
91	213.4	165.3	247.9

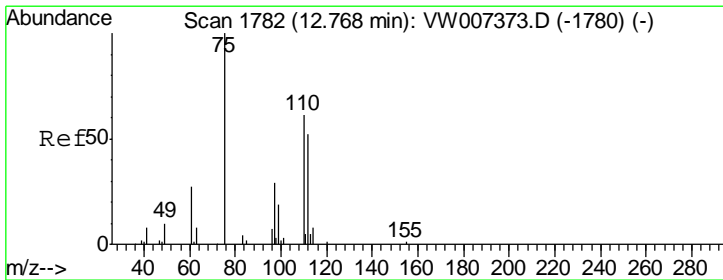
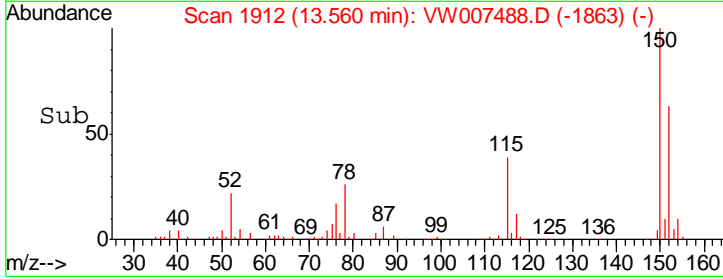
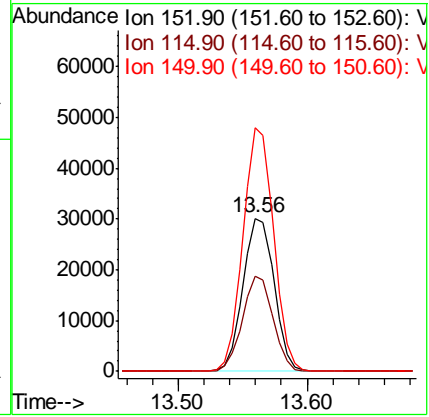
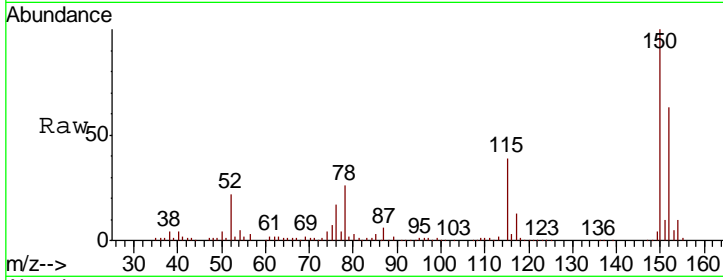




#72
 1,4-Dichlorobenzene-d4
 Concen: 50.000 ug/l
 RT: 13.56 min Scan# 1912
 Delta R.T. -0.00 min
 Lab File: VW007488.D
 Acq: 13 Dec 2018 15:10

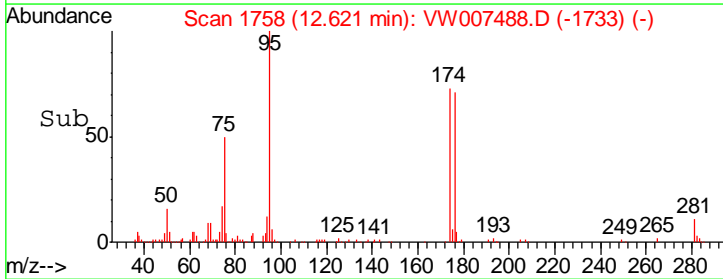
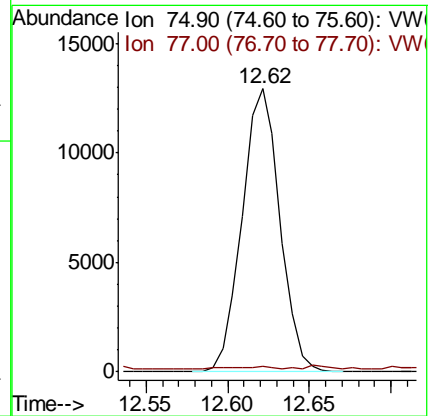
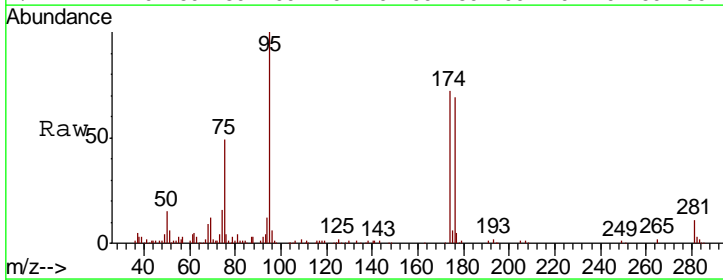
Instrument : MSVOA_W
 ClientSampled : 063_SW-E-1

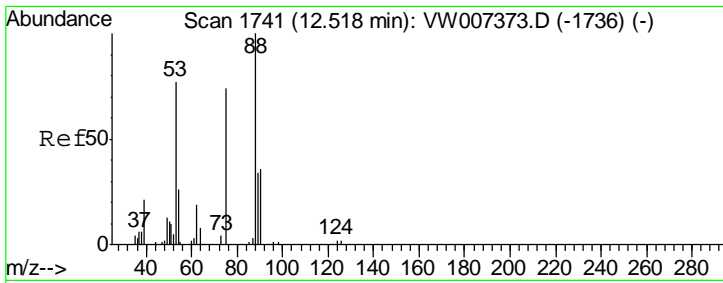
Tgt Ion	Resp	Lower	Upper
152	100		
115	61.2	31.4	94.2
150	155.9	0.0	358.4



#76
 1,2,3-Trichloropropane
 Concen: 50.163 ug/l
 RT: 12.62 min Scan# 1758
 Delta R.T. -0.15 min
 Lab File: VW007488.D
 Acq: 13 Dec 2018 15:10

Tgt Ion	Resp	Lower	Upper
75	100		
77	1.3	166.9	500.8#

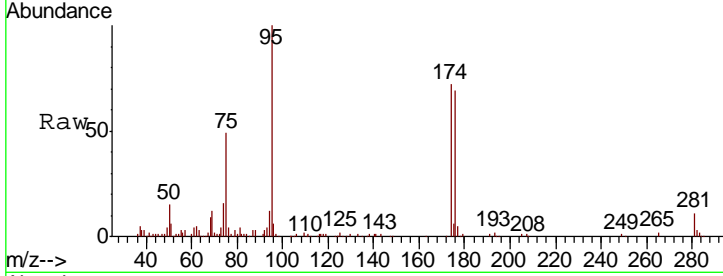




#81
 trans-1,4-Dichloro-2-butene
 Concen: 110.810 ug/l
 RT: 12.62 min Scan# 1758
 Delta R.T. 0.10 min
 Lab File: VW007488.D
 Acq: 13 Dec 2018 15:10

Instrument :
 MSVOA_W
 ClientSampled :
 063_SW-E-1

Tot Ion	Resp	Lower	Upper
75	100		
53	0.0	84.9	127.3#
89	0.0	40.3	60.5#



Abundance Ion 74.90 (74.60 to 75.60): VW
 Ion 53.00 (52.70 to 53.70): VW
 Ion 88.90 (88.60 to 89.60): VW

