

Data Path : Z:\voasrv\HPCHEM1\MSVOA_W\Data\VW121721\
 Data File : VW021423.D
 Acq On : 17 Dec 2021 11:53
 Operator : SY/VA
 Sample : VIBLK541
 Misc : 5.00g/10.0mL/MSVOA_W/SOIL
 ALS Vial : 1 Sample Multiplier: 1

Instrument :
 MSVOA_W
ClientSampleId :
 VIBLK541

Quant Time: Dec 17 15:16:23 2021
 Quant Method : Z:\voasrv\HPCHEM1\MSVOA_W\Method\SFAMWLM120921SMA.M
 Quant Title : SFAM01.0
 QLast Update : Fri Dec 17 00:58:26 2021
 Response via : Initial Calibration

Compound	R.T.	QIon	Response	Conc	Units	Dev(Min)

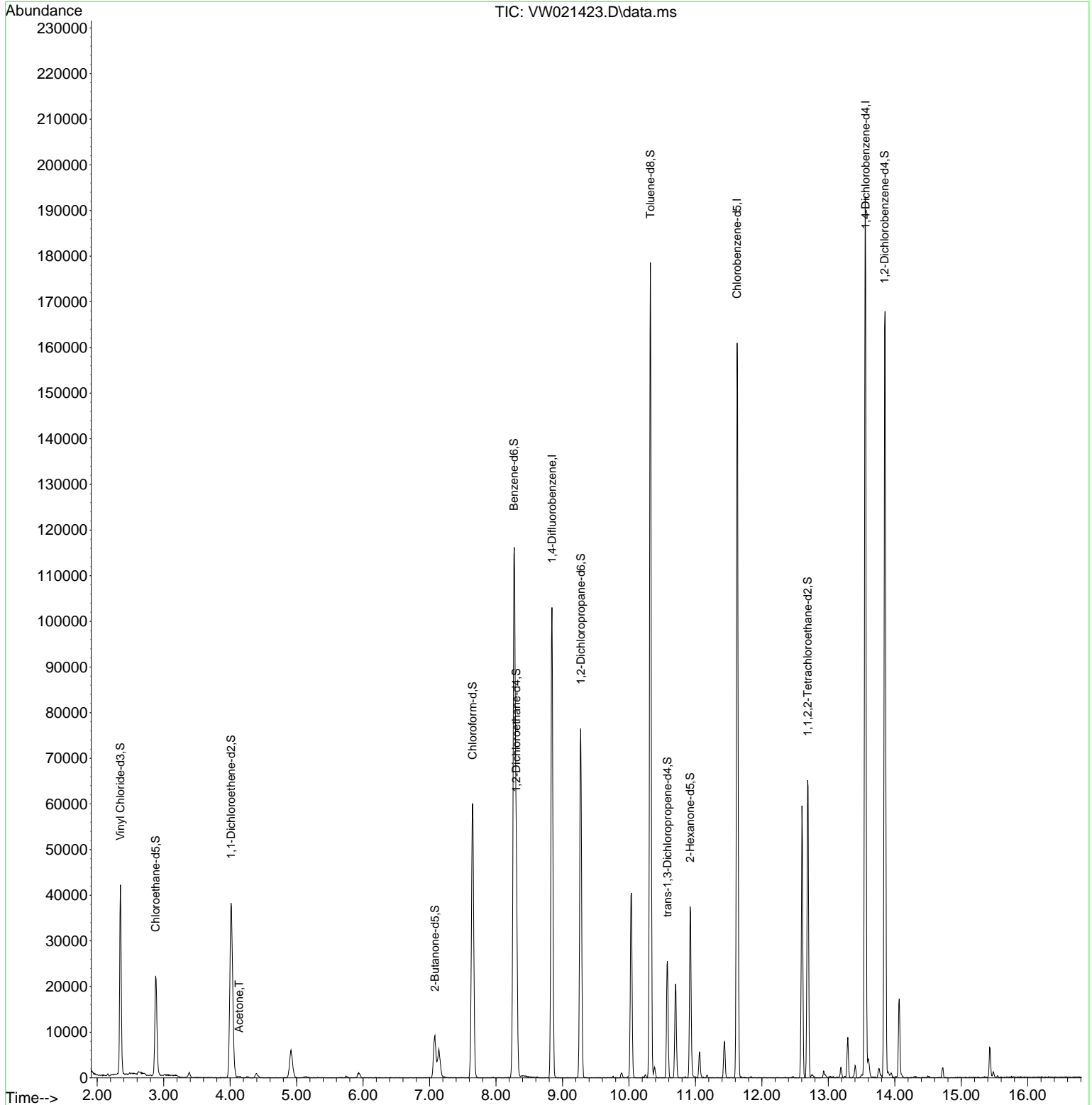
Internal Standards						
1) 1,4-Difluorobenzene	8.842	114	87453	25.000	ug/L	# 0.00
28) Chlorobenzene-d5	11.628	117	90206	25.000	ug/L	0.00
58) 1,4-Dichlorobenzene-d4	13.560	152	52313	25.000	ug/L	0.00
System Monitoring Compounds						
4) Vinyl Chloride-d3	2.349	65	40100	25.177	ug/L	0.00
Spiked Amount	25.000	Range 30 - 150	Recovery	=	100.720%	
7) Chloroethane-d5	2.879	69	26221	24.903	ug/L	0.00
Spiked Amount	25.000	Range 30 - 150	Recovery	=	99.600%	
11) 1,1-Dichloroethene-d2	4.013	63	36662	17.265	ug/L	0.00
Spiked Amount	25.000	Range 45 - 110	Recovery	=	69.080%	
21) 2-Butanone-d5	7.080	46	15420	68.682	ug/L	0.00
Spiked Amount	50.000	Range 20 - 135	Recovery	=	137.360%#	
24) Chloroform-d	7.647	84	60720	24.915	ug/L	0.00
Spiked Amount	25.000	Range 40 - 150	Recovery	=	99.640%	
26) 1,2-Dichloroethane-d4	8.305	65	34864	26.893	ug/L	0.00
Spiked Amount	25.000	Range 70 - 130	Recovery	=	107.560%	
32) Benzene-d6	8.269	84	116783	23.619	ug/L	0.00
Spiked Amount	25.000	Range 20 - 135	Recovery	=	94.480%	
36) 1,2-Dichloropropane-d6	9.274	67	32257	24.326	ug/L	0.00
Spiked Amount	25.000	Range 70 - 120	Recovery	=	97.320%	
41) Toluene-d8	10.323	98	114468	22.658	ug/L	0.00
Spiked Amount	25.000	Range 30 - 130	Recovery	=	90.640%	
43) trans-1,3-Dichloroprop...	10.579	79	13235	21.676	ug/L	0.00
Spiked Amount	25.000	Range 30 - 135	Recovery	=	86.720%	
47) 2-Hexanone-d5	10.921	63	12244	62.441	ug/L	0.00
Spiked Amount	50.000	Range 20 - 135	Recovery	=	124.880%	
56) 1,1,2,2-Tetrachloroeth...	12.688	84	30402	26.670	ug/L	0.00
Spiked Amount	25.000	Range 45 - 120	Recovery	=	106.680%	
66) 1,2-Dichlorobenzene-d4	13.847	152	46004	22.691	ug/L	0.00
Spiked Amount	25.000	Range 75 - 120	Recovery	=	90.760%	
Target Compounds						
13) Acetone	4.135	43	711	3.533	ug/L	Qvalue 92

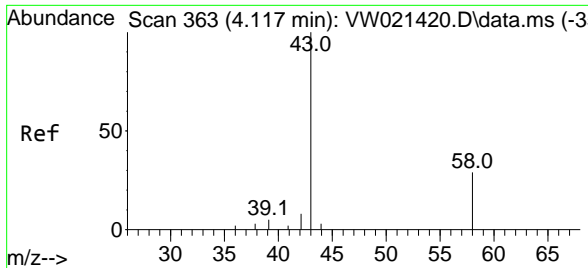
(#) = qualifier out of range (m) = manual integration (+) = signals summed

Data Path : Z:\voasrv\HPCHEM1\MSVOA_W\Data\VW121721\
 Data File : VW021423.D
 Acq On : 17 Dec 2021 11:53
 Operator : SY/VA
 Sample : VIBLK541
 Misc : 5.00g/10.0mL/MSVOA_W/SOIL
 ALS Vial : 1 Sample Multiplier: 1

Instrument :
 MSVOA_W
 ClientSampleId :
 VIBLK541

Quant Time: Dec 17 15:16:23 2021
 Quant Method : Z:\voasrv\HPCHEM1\MSVOA_W\Method\SFAMWLM120921SMA.M
 Quant Title : SFAM01.0
 QLast Update : Fri Dec 17 00:58:26 2021
 Response via : Initial Calibration





#13
 Acetone
 Concen: 3.533 ug/L
 RT: 4.135 min Scan# 30
 Delta R.T. 0.006 min
 Lab File: VW021423.D
 Acq: 17 Dec 2021 11:53

Instrument : MSVOA_W
 ClientSampleId : VIBLK541

Tgt Ion: 43 Resp: 711

Ion	Ratio	Lower	Upper
43	100		
58	22.1	0.0	52.8

