

Data Path : Z:\VOASRV\HPCHEM1\MSVOA W\DATA\VW121818\
 Data File : VW007617.D
 Acq On : 16 Dec 2018 08:08
 Operator : SY/AP
 Sample : J6378-23
 Misc : 6.22G/5ML/MSVOA W/SOIL
 ALS Vial : 27 Sample Multiplier: 1

Instrument :
 MSVOA_W
 ClientSampleId :

Quant Time: Dec 17 00:18:40 2018
 Quant Method : Z:\VOASRV\HPCHEM1\MSVOA_W\METHOD\82W121118S.M
 Quant Title : SW846 8260
 QLast Update : Tue Dec 11 02:58:16 2018
 Response via : Initial Calibration

Internal Standards	R.T.	QIon	Response	Conc	Units	Dev(Min)
1) Pentafluorobenzene	7.95	168	80570	50.00	ug/l	0.00
34) 1,4-Difluorobenzene	8.84	114	140766	50.00	ug/l	0.00
63) Chlorobenzene-d5	11.63	117	104494	50.00	ug/l	0.00
72) 1,4-Dichlorobenzene-d4	13.56	152	39616	50.00	ug/l	0.00

System Monitoring Compounds

33) 1,2-Dichloroethane-d4	8.31	65	49366	55.23	ug/l	0.00
Spiked Amount				50.000		
			Recovery	=	110.46%	
35) Dibromofluoromethane	7.88	113	44687	52.44	ug/l	0.00
Spiked Amount				50.000		
			Recovery	=	104.88%	
50) Toluene-d8	10.32	98	147416	46.14	ug/l	0.00
Spiked Amount				50.000		
			Recovery	=	92.28%	
62) 4-Bromofluorobenzene	12.62	95	45060	38.36	ug/l	0.00
Spiked Amount				50.000		
			Recovery	=	76.72%	

Target Compounds

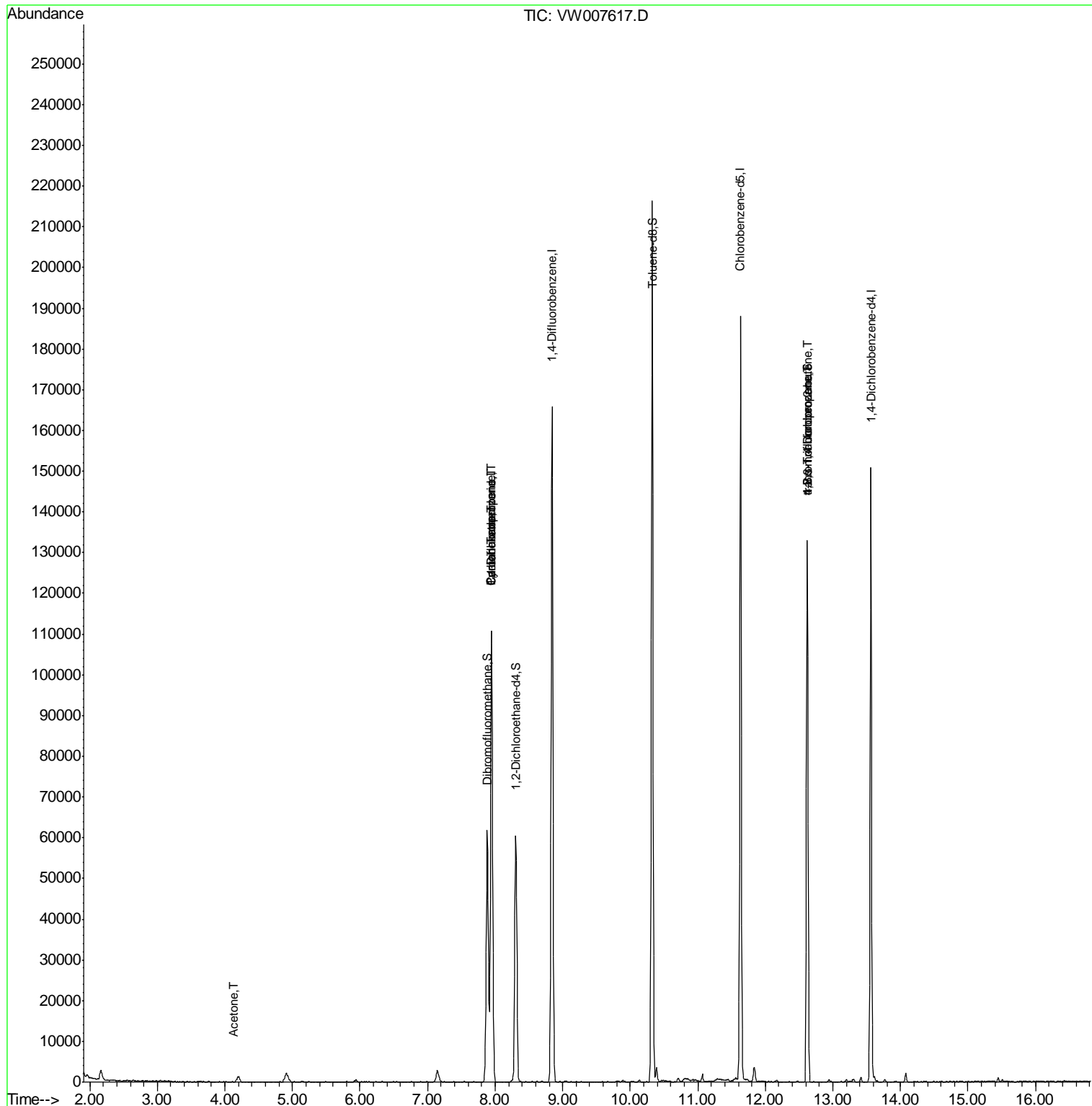
					Qvalue	
16) Acetone	4.13	43	241	1.544	ug/l #	44
20) Methylene Chloride	4.91	84	2010	Below Cal	#	91
31) Cyclohexane	7.95	56	1676	1.207	ug/l #	37
36) 1,1-Dichloropropene	7.95	75	6256	4.872	ug/l #	49
38) Carbon Tetrachloride	7.95	117	8648	6.189	ug/l #	18
76) 1,2,3-Trichloropropane	12.62	75	22709	69.522	ug/l #	1
81) trans-1,4-Dichloro-2-buten	12.62	75	22709	153.574	ug/l #	7

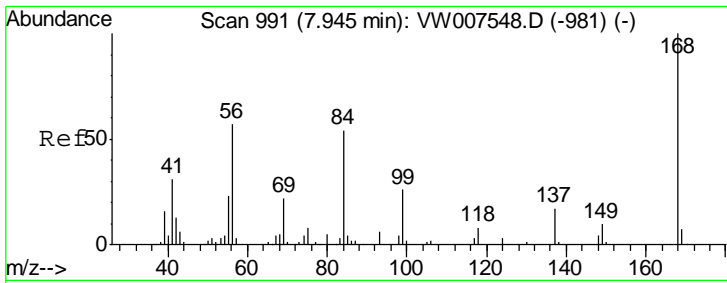
(#) = qualifier out of range (m) = manual integration (+) = signals summed

Data Path : Z:\VOASRV\HPCHEM1\MSVOA W\DATA\VW121818\
 Data File : VW007617.D
 Acq On : 16 Dec 2018 08:08
 Operator : SY/AP
 Sample : J6378-23
 Misc : 6.22G/5ML/MSVOA W/SOIL
 ALS Vial : 27 Sample Multiplier: 1

Instrument :
 MSVOA_W
 Client Sampled :

Quant Time: Dec 17 00:18:40 2018
 Quant Method : Z:\VOASRV\HPCHEM1\MSVOA_W\METHOD\82W121118S.M
 Quant Title : SW846 8260
 QLast Update : Tue Dec 11 02:58:16 2018
 Response via : Initial Calibration

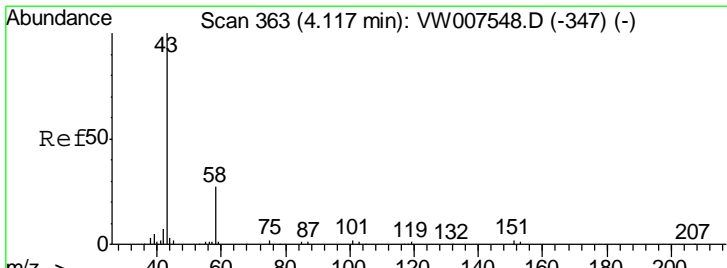
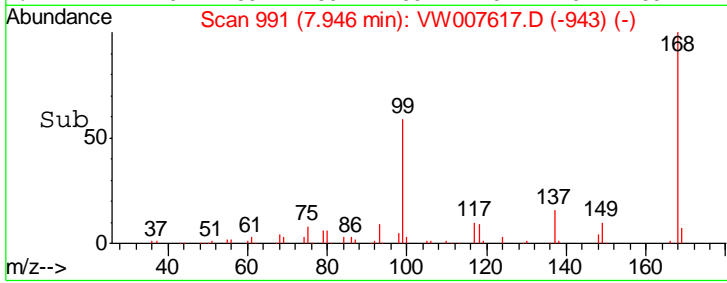
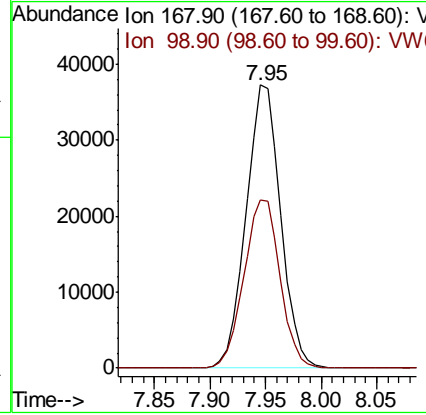
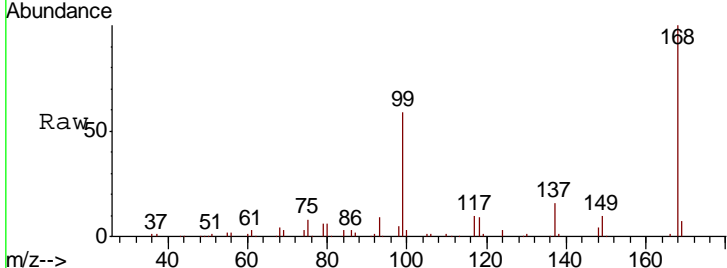




#1
 Pentafluorobenzene
 Concen: 50.000 ug/l
 RT: 7.95 min Scan# 991
 Delta R.T. -0.01 min
 Lab File: VW007617.D
 Acq: 16 Dec 2018 08:08

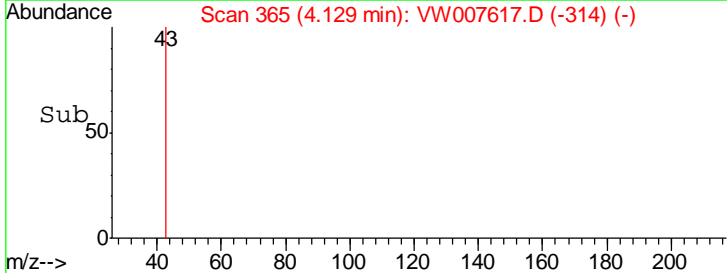
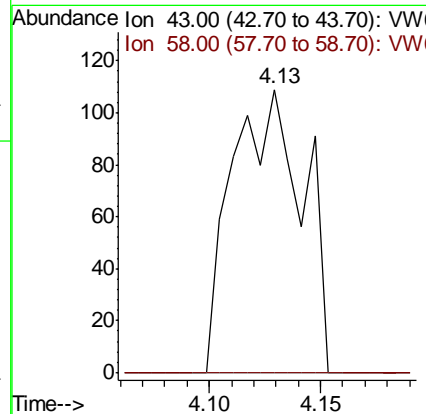
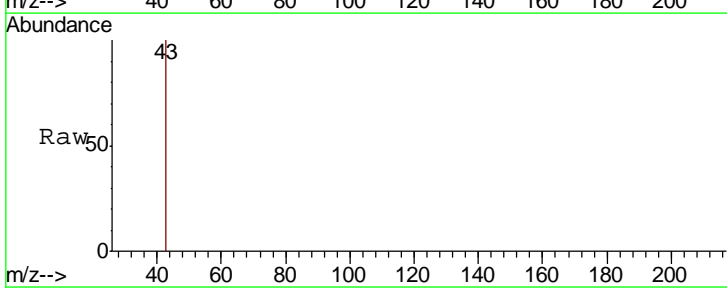
Instrument :
 MSVOA_W
 ClientSampled :

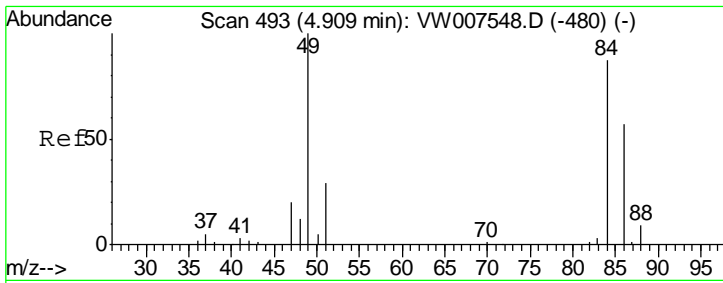
Tgt Ion: 168 Resp: 80570
 Ion Ratio Lower Upper
 168 100
 99 59.4 48.3 72.5



#16
 Acetone
 Concen: 1.544 ug/l
 RT: 4.13 min Scan# 365
 Delta R.T. 0.01 min
 Lab File: VW007617.D
 Acq: 16 Dec 2018 08:08

Tgt Ion: 43 Resp: 241
 Ion Ratio Lower Upper
 43 100
 58 0.0 24.9 37.3#

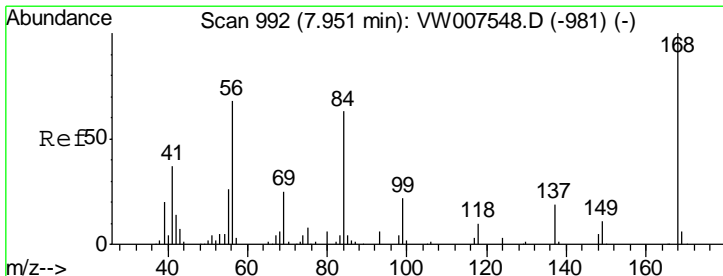
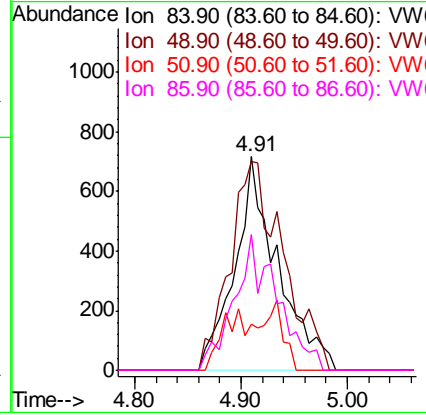
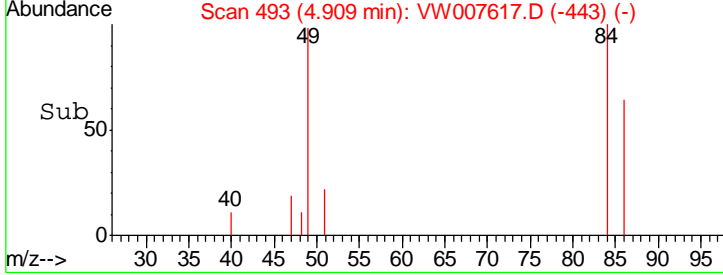
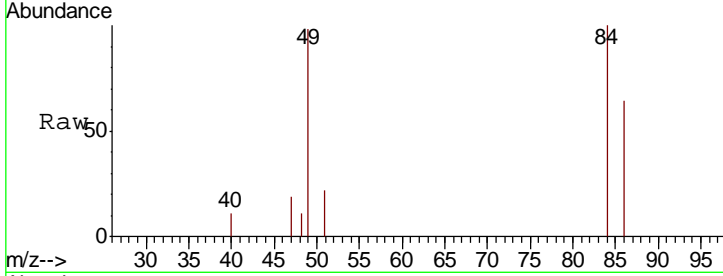




#20
 Methylene Chloride
 Concen: Below Cal
 RT: 4.91 min Scan# 493
 Delta R.T. 0.01 min
 Lab File: VW007617.D
 Acq: 16 Dec 2018 08:08

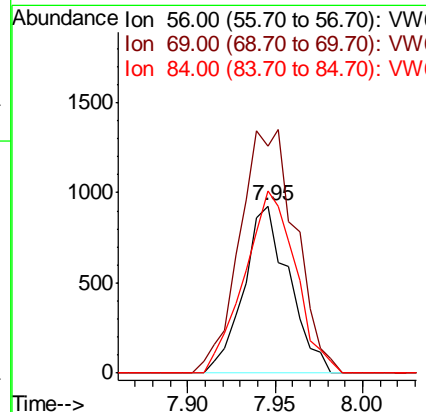
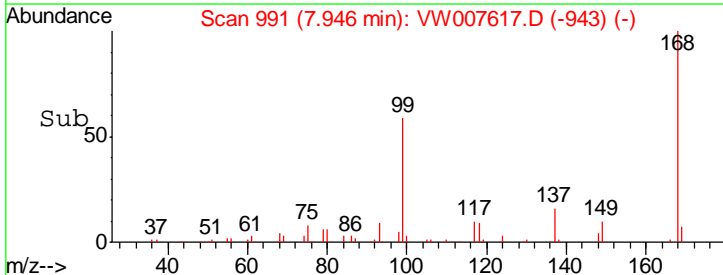
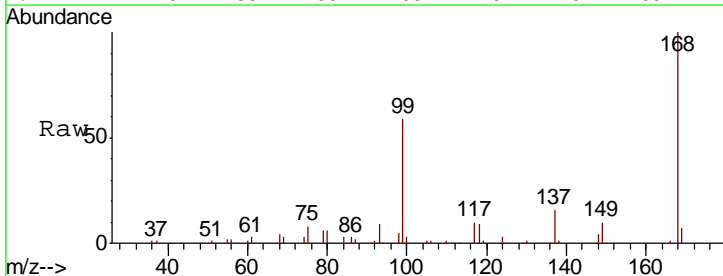
Instrument :
 MSVOA_W
 ClientSampled :

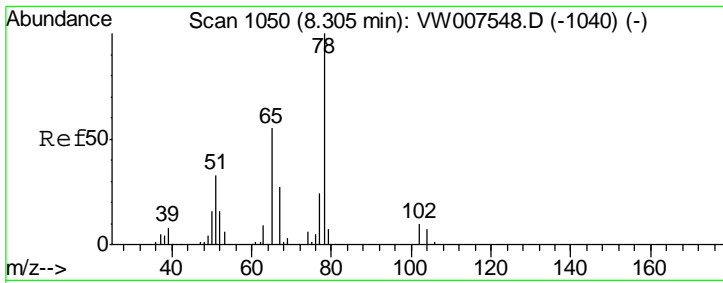
Tgt Ion	Resp	Lower	Upper
84	100		
49	97.9	87.1	130.7
51	21.8	28.2	42.2#
86	63.5	50.8	76.2



#31
 Cyclohexane
 Concen: 1.207 ug/l
 RT: 7.95 min Scan# 991
 Delta R.T. -0.01 min
 Lab File: VW007617.D
 Acq: 16 Dec 2018 08:08

Tgt Ion	Resp	Lower	Upper
56	100		
69	136.3	28.9	43.3#
84	109.0	71.8	107.6#

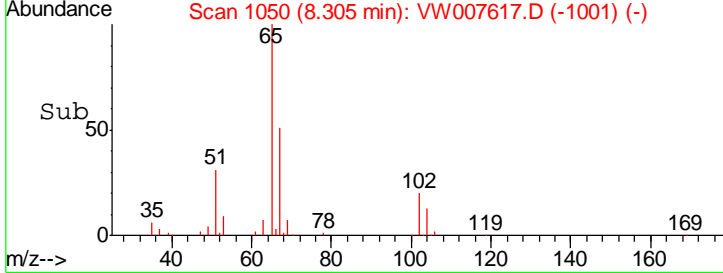
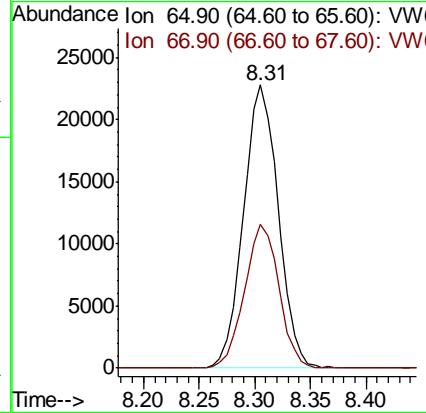
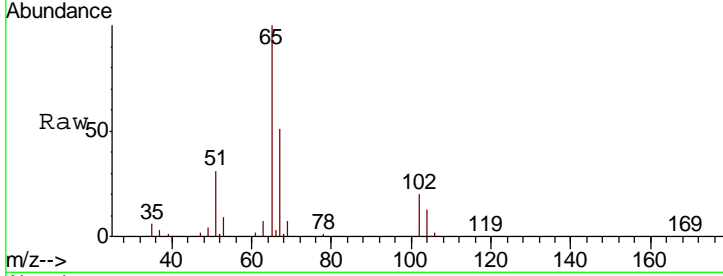




#33
 1,2-Dichloroethane-d4
 Concen: 55.228 ug/l
 RT: 8.31 min Scan# 1050
 Delta R.T. 0.00 min
 Lab File: VW007617.D
 Acq: 16 Dec 2018 08:08

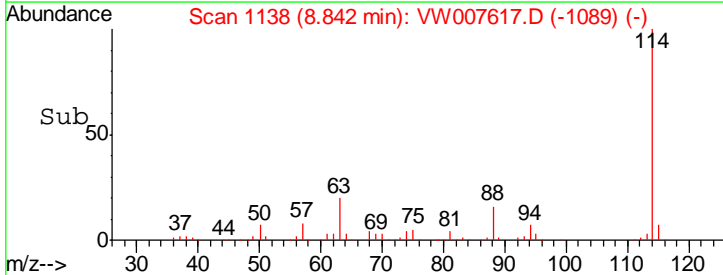
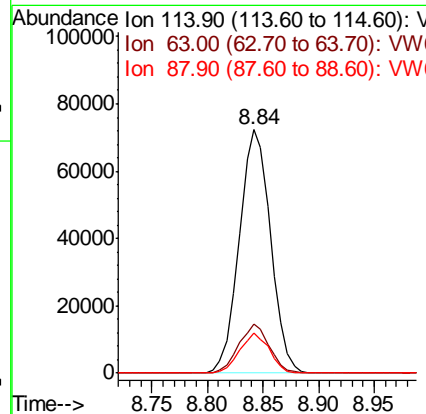
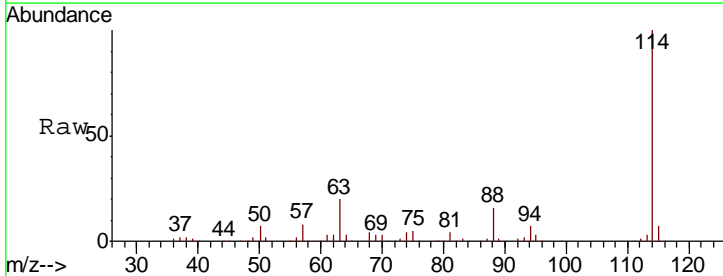
Instrument :
 MSVOA_W
 ClientSampled :

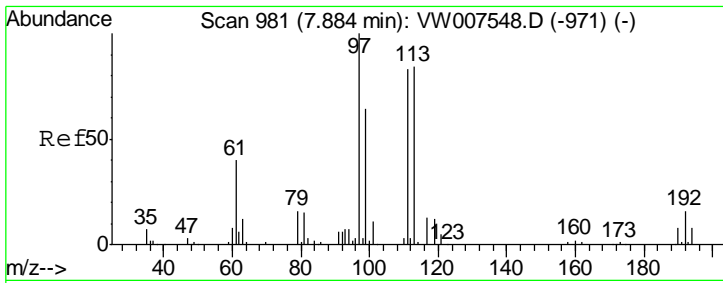
Tgt Ion	Resp	Lower	Upper
65	49366		
67	50.6	0.0	101.6



#34
 1,4-Difluorobenzene
 Concen: 50.000 ug/l
 RT: 8.84 min Scan# 1138
 Delta R.T. 0.00 min
 Lab File: VW007617.D
 Acq: 16 Dec 2018 08:08

Tgt Ion	Resp	Lower	Upper
114	140766		
63	20.0	0.0	39.6
88	16.3	0.0	31.4

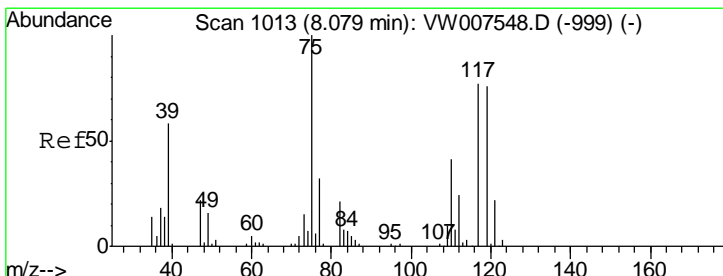
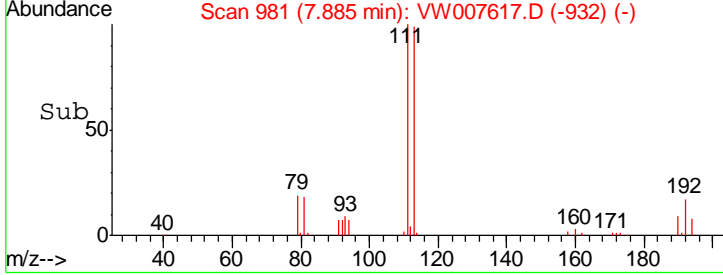
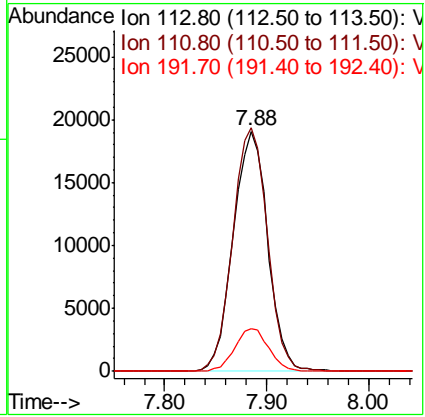
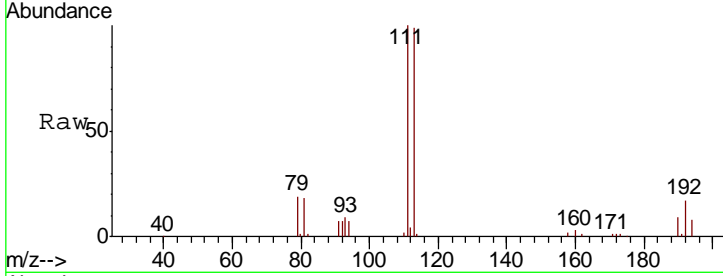




#35
 Dibromofluoromethane
 Concen: 52.443 ug/l
 RT: 7.88 min Scan# 981
 Delta R.T. 0.00 min
 Lab File: VW007617.D
 Acq: 16 Dec 2018 08:08

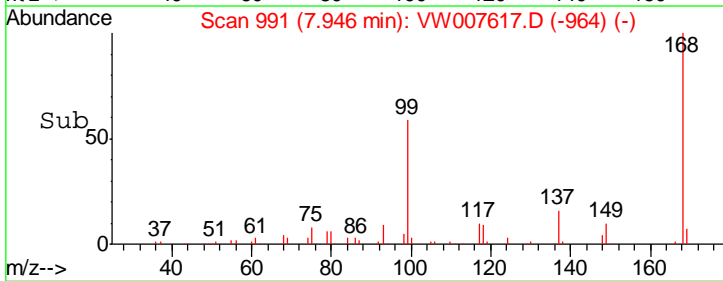
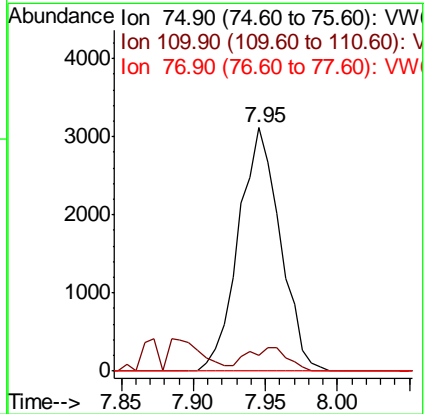
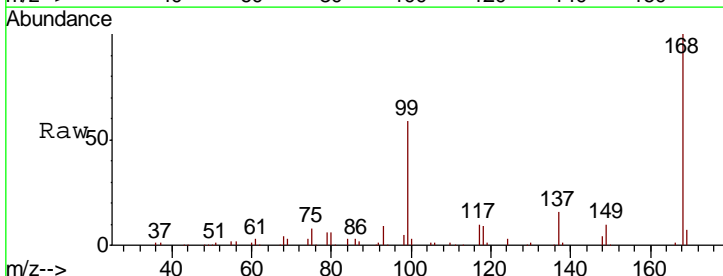
Instrument :
 MSVOA_W
 ClientSampled :

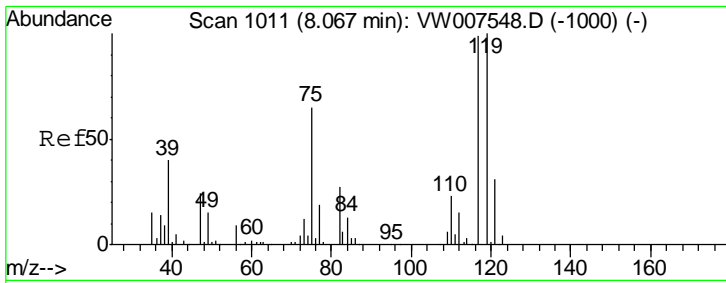
Tgt Ion	Resp	Lower	Upper
113	44687		
111	101.6	81.1	121.7
192	17.5	14.6	21.8



#36
 1,1-Dichloropropene
 Concen: 4.872 ug/l
 RT: 7.95 min Scan# 991
 Delta R.T. -0.13 min
 Lab File: VW007617.D
 Acq: 16 Dec 2018 08:08

Tgt Ion	Resp	Lower	Upper
75	6256		
110	9.8	18.5	55.5#
77	0.0	25.6	38.4#

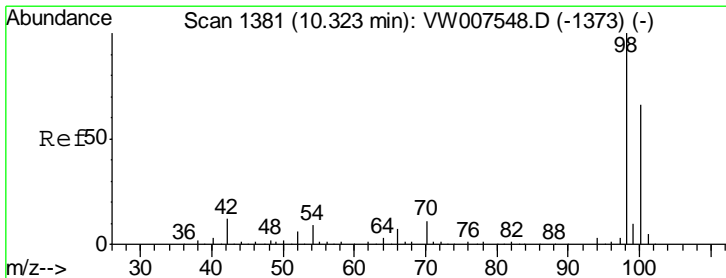
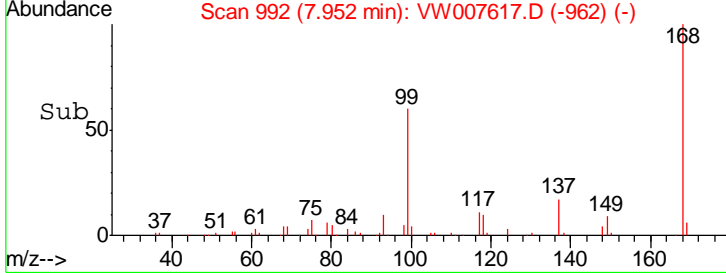
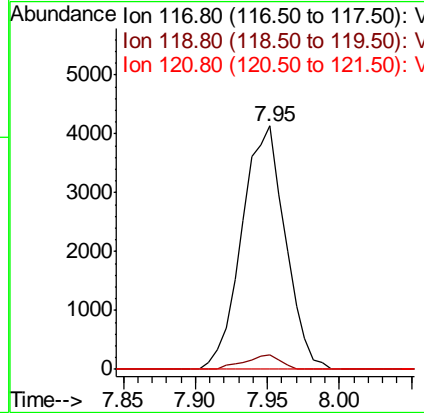
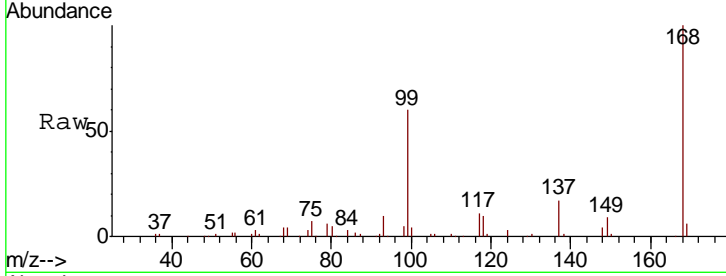




#38
 Carbon Tetrachloride
 Concen: 6.189 ug/l
 RT: 7.95 min Scan# 992
 Delta R.T. -0.12 min
 Lab File: VW007617.D
 Acq: 16 Dec 2018 08:08

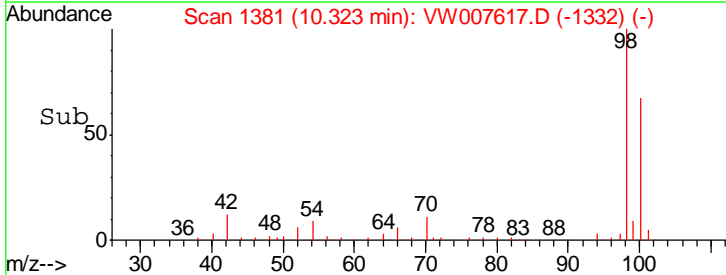
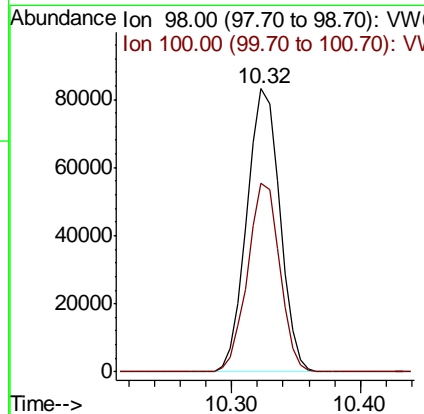
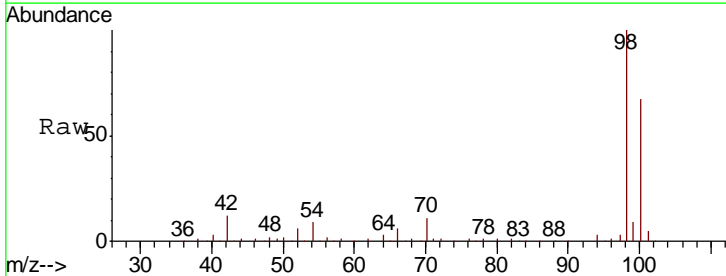
Instrument :
 MSVOA_W
 ClientSampled :

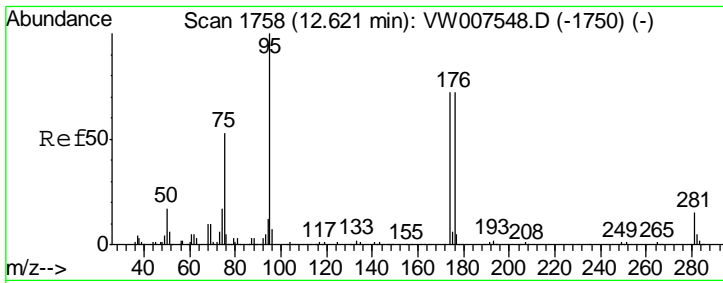
Tgt Ion	Resp	Lower	Upper
117	100		
119	5.9	74.3	111.5#
121	0.0	24.3	36.5#



#50
 Toluene-d8
 Concen: 46.140 ug/l
 RT: 10.32 min Scan# 1381
 Delta R.T. 0.00 min
 Lab File: VW007617.D
 Acq: 16 Dec 2018 08:08

Tgt Ion	Resp	Lower	Upper
98	100		
100	64.6	51.8	77.8

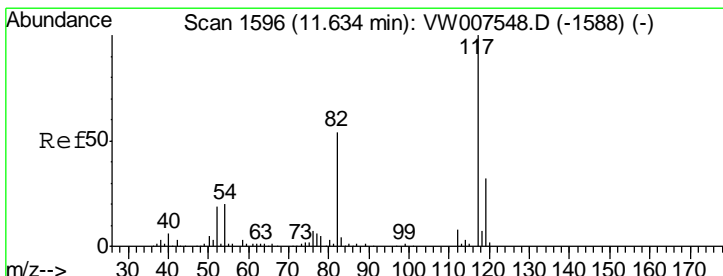
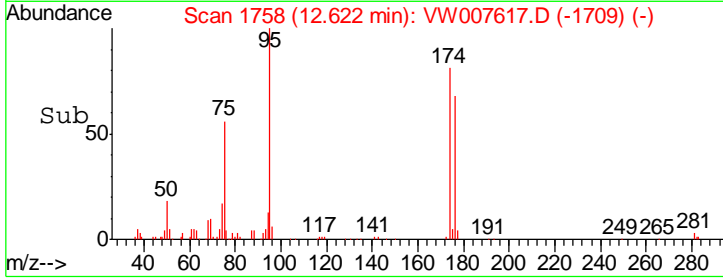
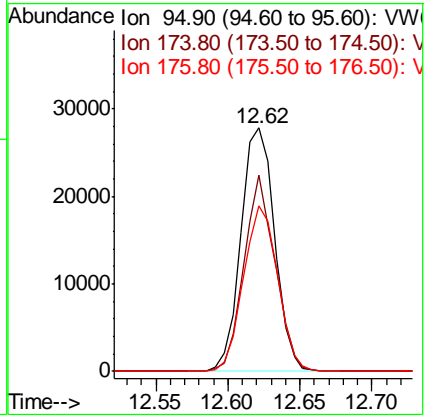
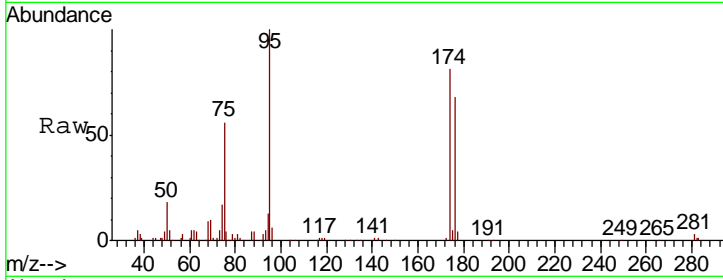




#62
 4-Bromofluorobenzene
 Concen: 38.359 ug/l
 RT: 12.62 min Scan# 1758
 Delta R.T. 0.00 min
 Lab File: VW007617.D
 Acq: 16 Dec 2018 08:08

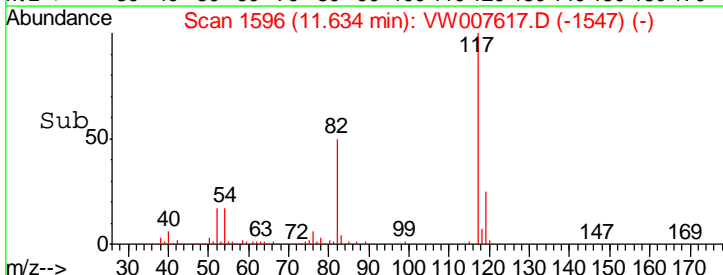
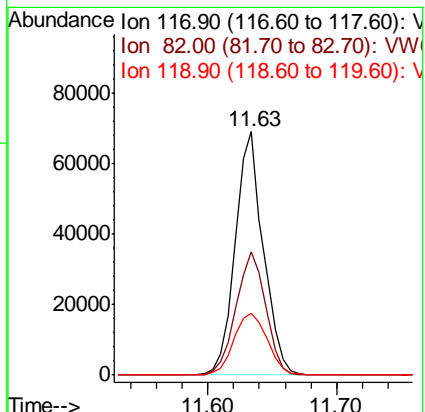
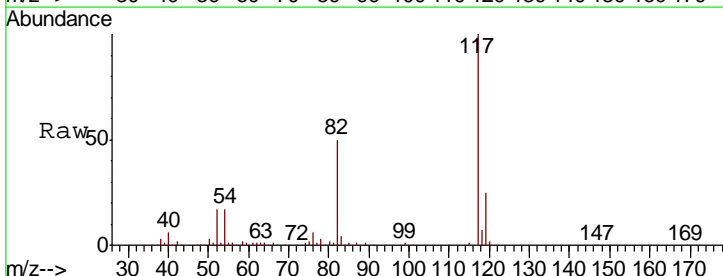
Instrument :
 MSVOA_W
 ClientSampled :

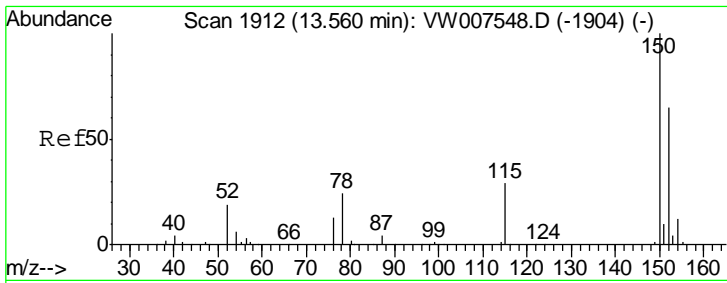
Tgt Ion	Resp	Lower	Upper
95	45060		
174	74.1	0.0	147.2
176	69.1	0.0	138.8



#63
 Chlorobenzene-d5
 Concen: 50.000 ug/l
 RT: 11.63 min Scan# 1596
 Delta R.T. 0.00 min
 Lab File: VW007617.D
 Acq: 16 Dec 2018 08:08

Tgt Ion	Resp	Lower	Upper
117	104494		
82	50.5	42.3	63.5
119	24.9	23.0	34.6

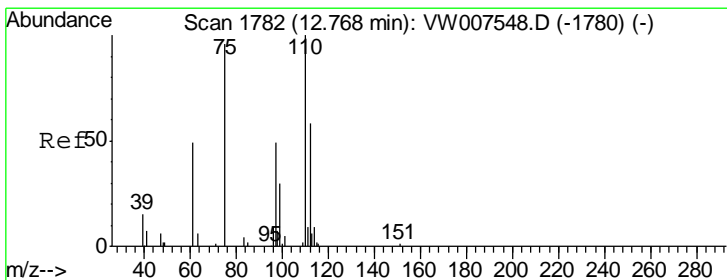
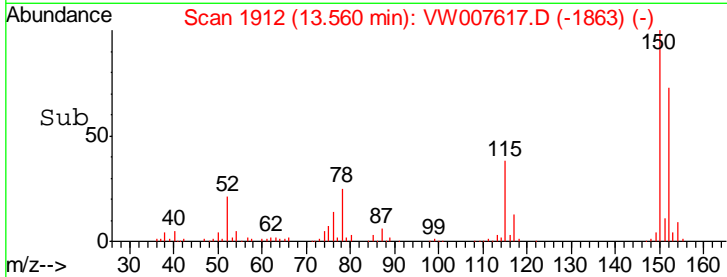
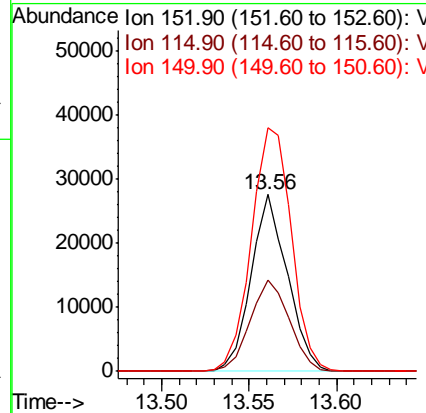
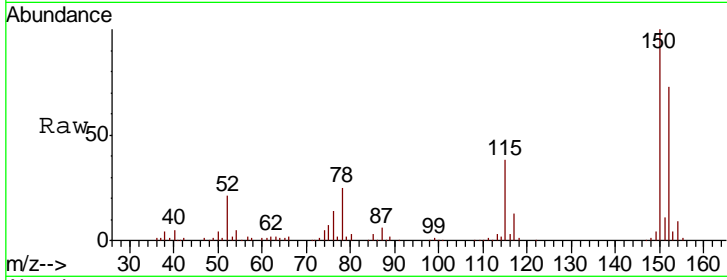




#72
 1,4-Dichlorobenzene-d4
 Concen: 50.000 ug/l
 RT: 13.56 min Scan# 1912
 Delta R.T. 0.00 min
 Lab File: VW007617.D
 Acq: 16 Dec 2018 08:08

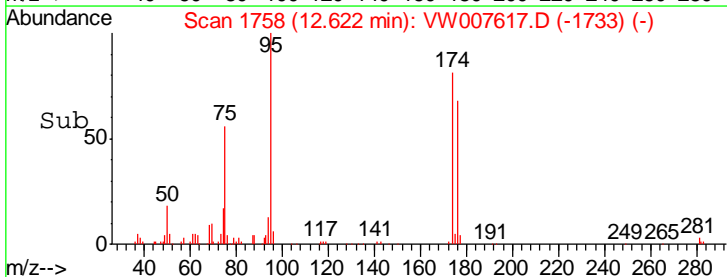
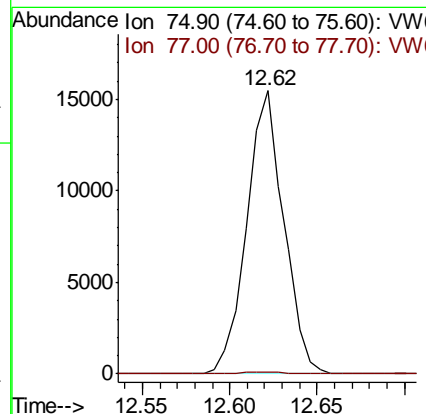
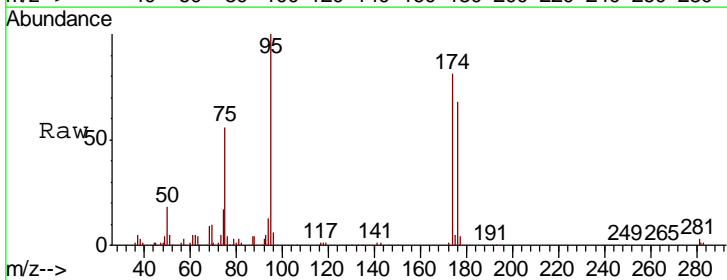
Instrument :
 MSVOA_W
 ClientSampled :

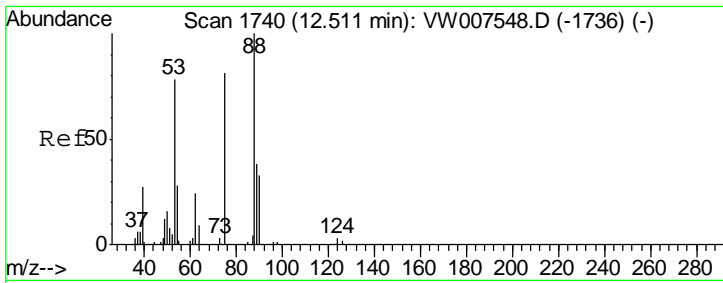
Tgt Ion	Resp	Lower	Upper
152	100		
115	56.1	31.4	94.2
150	152.3	0.0	358.4



#76
 1,2,3-Trichloropropane
 Concen: 69.522 ug/l
 RT: 12.62 min Scan# 1758
 Delta R.T. -0.15 min
 Lab File: VW007617.D
 Acq: 16 Dec 2018 08:08

Tgt Ion	Resp	Lower	Upper
75	100		
77	0.6	166.9	500.8#

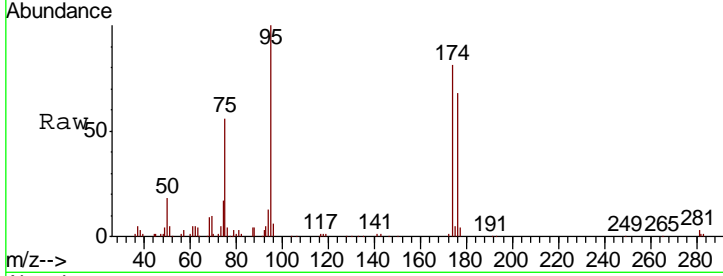




#81
 trans-1,4-Dichloro-2-butene
 Concen: 153.574 ug/l
 RT: 12.62 min Scan# 1758
 Delta R.T. 0.10 min
 Lab File: VW007617.D
 Acq: 16 Dec 2018 08:08

Instrument :
 MSVOA_W
 ClientSampled :

Tot Ion	Ratio	Lower	Upper
75	100		
53	0.0	84.9	127.3#
89	0.0	40.3	60.5#



Abundance Ion 74.90 (74.60 to 75.60): VW
 Ion 53.00 (52.70 to 53.70): VW
 Ion 88.90 (88.60 to 89.60): VW

