

Data Path : Z:\voasrv\HPCHEM1\MSVOA_W\Data\VW121824\
 Data File : VW031360.D
 Acq On : 19 Dec 2024 00:06
 Operator : SY/MD
 Sample : P5302-09
 Misc : 6.73g/10mL/MSVOA_W/SOIL/A
 ALS Vial : 36 Sample Multiplier: 1

Instrument :
 MSVOA_W
 ClientSampleId :
 E2AR9

Manual Integrations
 APPROVED

Reviewed By :Romaben Patel 12/19/2024
 Supervised By :Mahesh Dadoda 12/20/2024

Quant Time: Dec 19 04:12:55 2024
 Quant Method : Z:\voasrv\HPCHEM1\MSVOA_W\Method\SFAMWLM121324SMA.M
 Quant Title : SFAM01.0
 QLast Update : Thu Dec 19 04:08:34 2024
 Response via : Initial Calibration

Compound	R.T.	QIon	Response	Conc	Units	Dev(Min)

Internal Standards						
1) 1,4-Difluorobenzene	8.843	114	86979	25.000	ug/L	0.00
28) Chlorobenzene-d5	11.629	117	46906	25.000	ug/L	0.00
58) 1,4-Dichlorobenzene-d4	13.556	152	9017	25.000	ug/L	0.00
System Monitoring Compounds						
4) Vinyl Chloride-d3	2.350	65	27792	21.236	ug/L	-0.01
Spiked Amount	25.000	Range 30 - 150	Recovery	=	84.960%	
7) Chloroethane-d5	2.887	69	23541	24.317	ug/L	-0.01
Spiked Amount	25.000	Range 30 - 150	Recovery	=	97.280%	
11) 1,1-Dichloroethene-d2	4.021	65	11419	18.395	ug/L	0.00
Spiked Amount	25.000	Range 45 - 110	Recovery	=	73.560%	
21) 2-Butanone-d5	7.087	46	18457	74.888	ug/L	0.00
Spiked Amount	50.000	Range 20 - 135	Recovery	=	149.780%#	
24) Chloroform-d	7.648	84	45091	18.921	ug/L	0.00
Spiked Amount	25.000	Range 40 - 150	Recovery	=	75.680%	
26) 1,2-Dichloroethane-d4	8.307	65	32286	26.976	ug/L	0.00
Spiked Amount	25.000	Range 70 - 130	Recovery	=	107.920%	
32) Benzene-d6	8.270	84	84675	28.165	ug/L	0.00
Spiked Amount	25.000	Range 20 - 135	Recovery	=	112.640%	
36) 1,2-Dichloropropane-d6	9.276	67	27206	31.050	ug/L	0.00
Spiked Amount	25.000	Range 70 - 120	Recovery	=	124.200%#	
41) Toluene-d8	10.318	98	54279	19.407	ug/L	0.00
Spiked Amount	25.000	Range 30 - 130	Recovery	=	77.640%	
43) trans-1,3-Dichloroprop...	10.575	79	8833	21.863	ug/L	0.00
Spiked Amount	25.000	Range 30 - 135	Recovery	=	87.440%	
47) 2-Hexanone-d5	10.922	63	10440	88.599	ug/L	0.00
Spiked Amount	50.000	Range 20 - 135	Recovery	=	177.200%#	
56) 1,1,2,2-Tetrachloroeth...	12.690	84	19995	36.345	ug/L	0.00
Spiked Amount	25.000	Range 45 - 120	Recovery	=	145.400%#	
66) 1,2-Dichlorobenzene-d4	13.848	152	7092	21.186	ug/L	0.00
Spiked Amount	25.000	Range 75 - 120	Recovery	=	84.760%	
Target Compounds						
13) Acetone	4.137	43	4298m	12.522	ug/L	Qvalue

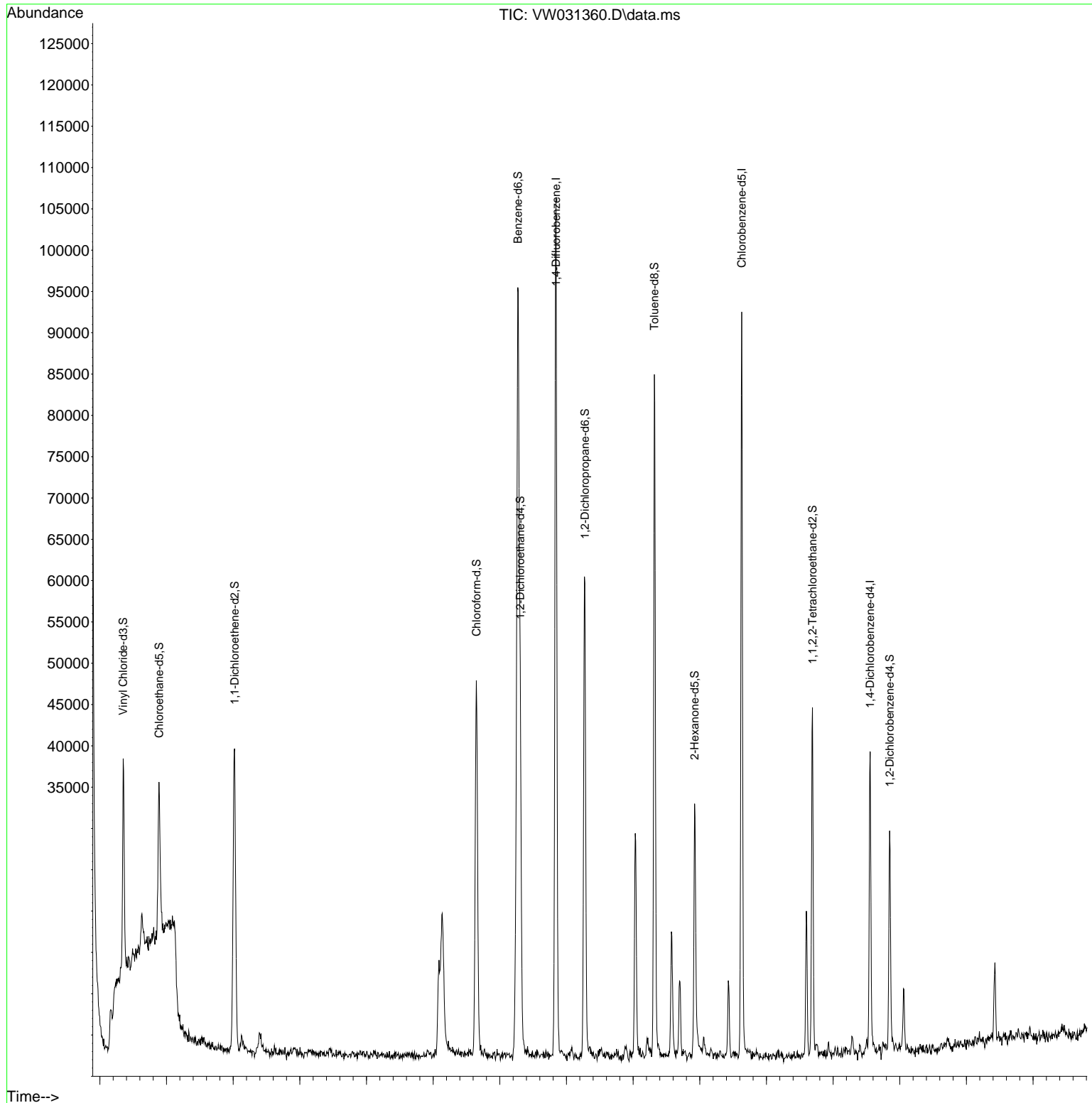
(#) = qualifier out of range (m) = manual integration (+) = signals summed

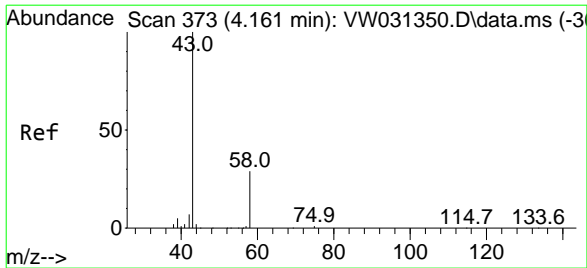
Data Path : Z:\voasrv\HPCHEM1\MSVOA_W\Data\VW121824\
 Data File : VW031360.D
 Acq On : 19 Dec 2024 00:06
 Operator : SY/MD
 Sample : P5302-09
 Misc : 6.73g/10mL/MSVOA_W/SOIL/A
 ALS Vial : 36 Sample Multiplier: 1

Instrument :
 MSVOA_W
ClientSampleId :
 E2AR9

Quant Time: Dec 19 04:12:55 2024
 Quant Method : Z:\voasrv\HPCHEM1\MSVOA_W\Method\SFAMWLM121324SMA.M
 Quant Title : SFAM01.0
 QLast Update : Thu Dec 19 04:08:34 2024
 Response via : Initial Calibration

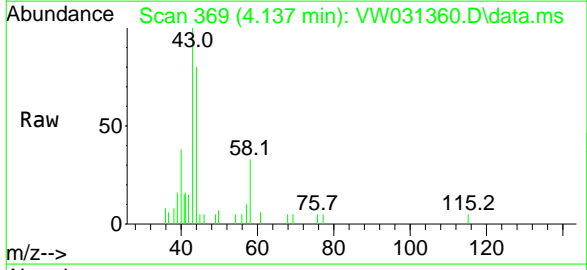
Manual Integrations
APPROVED
 Reviewed By :Romaben Patel 12/19/2024
 Supervised By :Mahesh Dadoda 12/20/2024





#13
 Acetone
 Concen: 12.522 ug/L m
 RT: 4.137 min Scan# 36
 Delta R.T. -0.025 min
 Lab File: VW031360.D
 Acq: 19 Dec 2024 00:06

Instrument :
 MSVOA_W
 ClientSampleId :
 E2AR9



Tgt Ion: 43 Resp: 4298
 Ion Ratio Lower Upper
 43 100
 58 27.1 0.0 0.0#

Manual Integrations
 APPROVED

Reviewed By :Romaben Patel 12/19/2024
 Supervised By :Mahesh Dadoda 12/20/2024

