

Data Path : Z:\VOASRV\HPCHEM1\MSVOA_W\DATA\VW121918\
 Data File : VW007637.D
 Acq On : 17 Dec 2018 17:41
 Operator : SY/AP
 Sample : J6378-19
 Misc : 5.39G/5ML/MSVOA_W/SOIL
 ALS Vial : 16 Sample Multiplier: 1

Instrument :
 MSVOA_W
 ClientSampleId :
 P001-SS001-0612-01MSD

Quant Time: Jan 01 00:09:01 2019
 Quant Method : Z:\VOASRV\HPCHEM1\MSVOA_W\METHOD\82W121118S.M
 Quant Title : SW846 8260
 QLast Update : Mon Dec 31 00:42:28 2018
 Response via : Initial Calibration

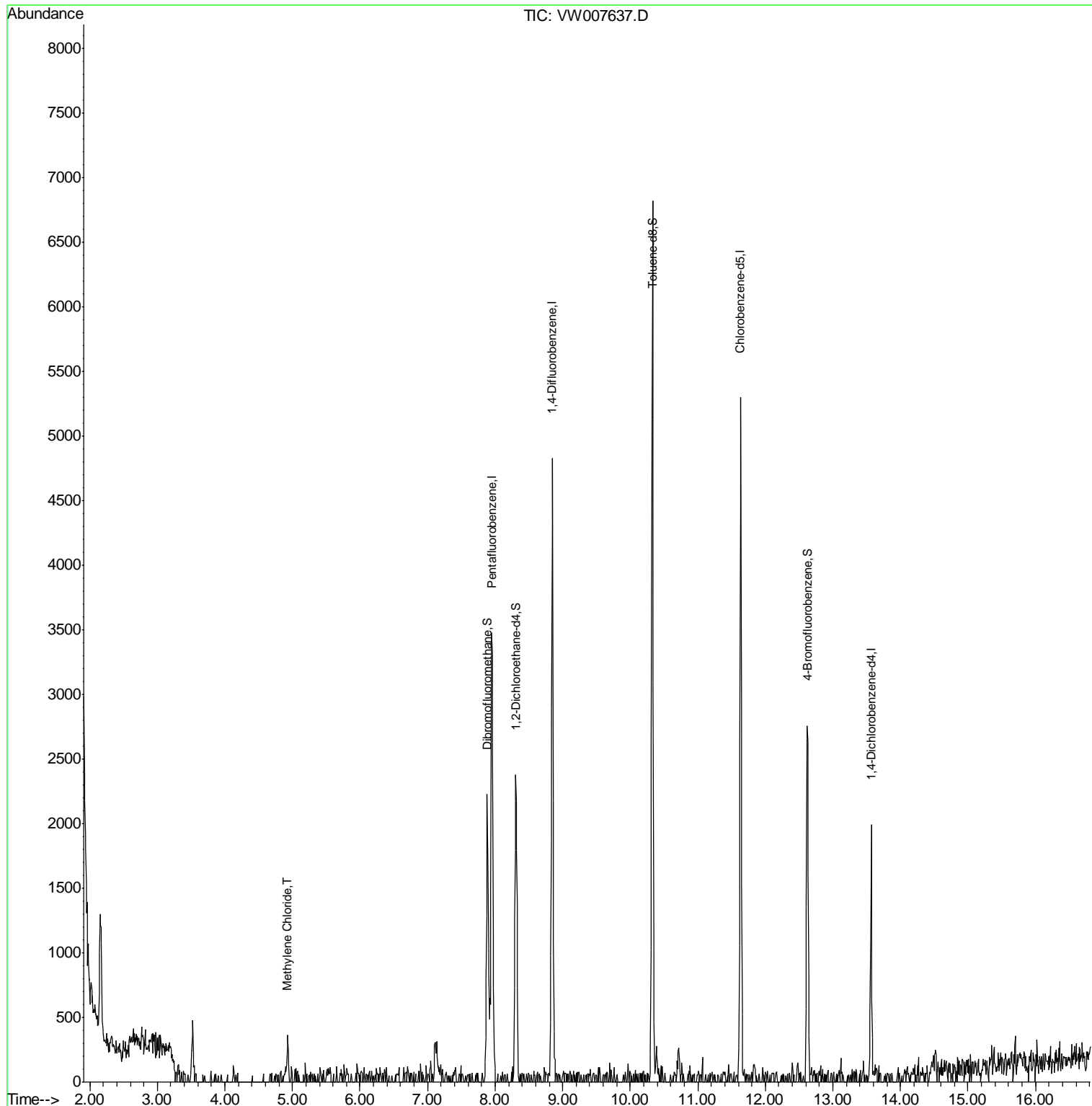
Internal Standards	R.T.	QIon	Response	Conc	Units	Dev(Min)
1) Pentafluorobenzene	7.95	168	2923	50.00	ug/l	0.00
34) 1,4-Difluorobenzene	8.85	114	4435	50.00	ug/l	0.00
63) Chlorobenzene-d5	11.63	117	3242	50.00	ug/l	0.00
72) 1,4-Dichlorobenzene-d4	13.57	152	601	50.00	ug/l	0.00
System Monitoring Compounds						
33) 1,2-Dichloroethane-d4	8.31	65	2006	61.86	ug/l	0.00
Spiked Amount	50.000		Recovery	=	123.72%	
35) Dibromofluoromethane	7.89	113	1693	63.06	ug/l	0.00
Spiked Amount	50.000		Recovery	=	126.12%	
50) Toluene-d8	10.33	98	4746	47.15	ug/l	0.00
Spiked Amount	50.000		Recovery	=	94.30%	
62) 4-Bromofluorobenzene	12.62	95	1290	34.86	ug/l	0.00
Spiked Amount	50.000		Recovery	=	69.72%	
Target Compounds						
20) Methylene Chloride	4.93	84	229	6.374	ug/l #	55

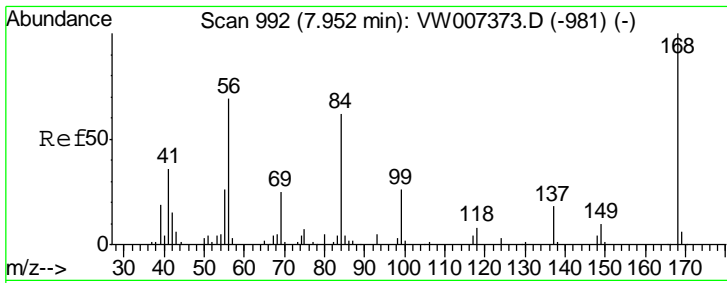
(#) = qualifier out of range (m) = manual integration (+) = signals summed

Data Path : Z:\VOASRV\HPCHEM1\MSVOA_W\DATA\VW121918\
 Data File : VW007637.D
 Acq On : 17 Dec 2018 17:41
 Operator : SY/AP
 Sample : J6378-19
 Misc : 5.39G/5ML/MSVOA_W/SOIL
 ALS Vial : 16 Sample Multiplier: 1

Instrument :
 MSVOA_W
 ClientSampleId :
 P001-SS001-0612-01MSD

Quant Time: Jan 01 00:09:01 2019
 Quant Method : Z:\VOASRV\HPCHEM1\MSVOA_W\METHOD\82W121118S.M
 Quant Title : SW846 8260
 QLast Update : Mon Dec 31 00:42:28 2018
 Response via : Initial Calibration



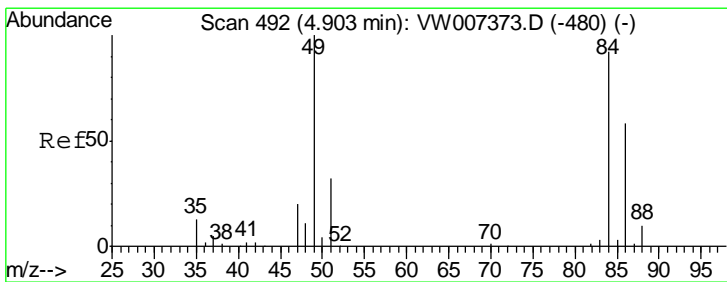
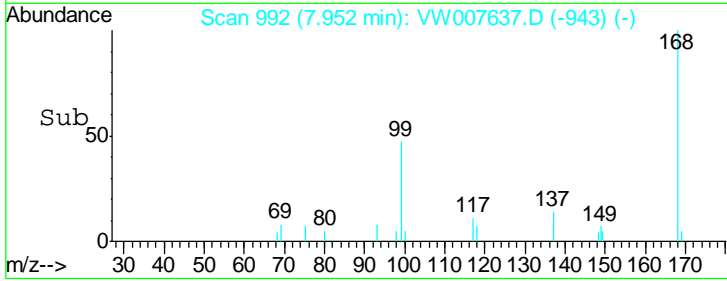
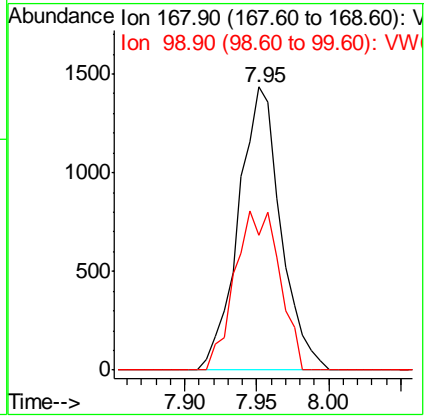
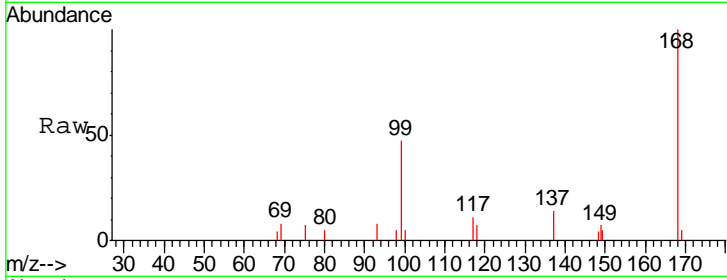


#1
 Pentafluorobenzene
 Concen: 50.000 ug/l
 RT: 7.95 min Scan# 992
 Delta R.T. 0.00 min
 Lab File: VW007637.D
 Acq: 17 Dec 2018 17:41

Instrument :
 MSVOA_W
ClientSampled :
 P001-SS001-0612-01MSD

Tgt Ion: 168 Resp: 2923

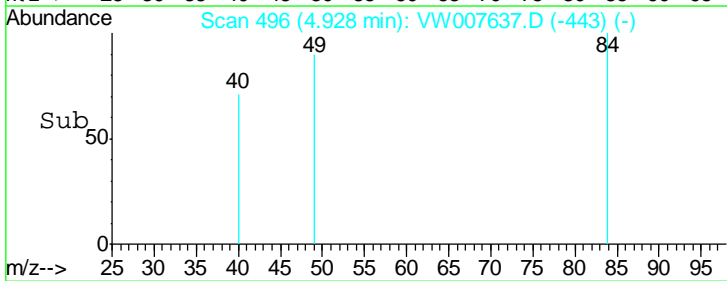
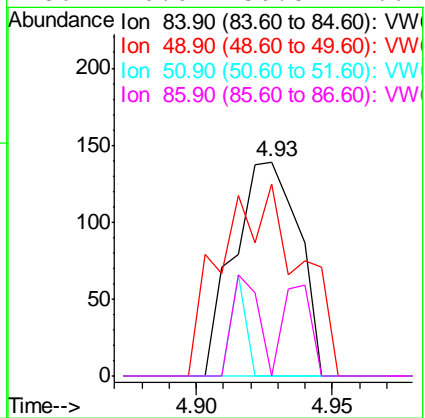
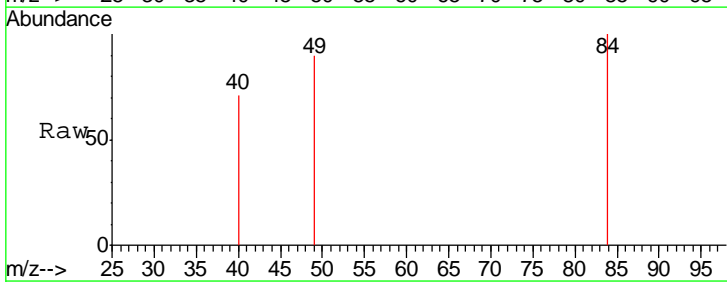
Ion	Ratio	Lower	Upper
168	100		
99	47.5	48.3	72.5#

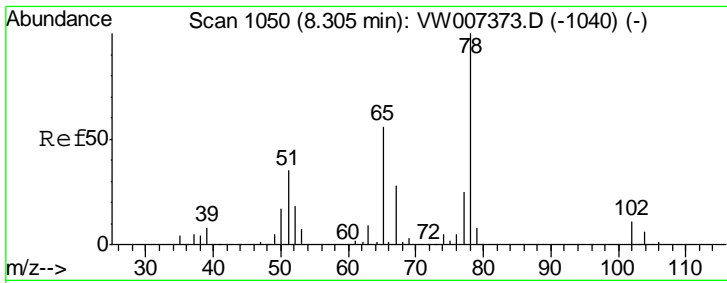


#20
 Methylene Chloride
 Concen: 6.374 ug/l
 RT: 4.93 min Scan# 496
 Delta R.T. 0.02 min
 Lab File: VW007637.D
 Acq: 17 Dec 2018 17:41

Tgt Ion: 84 Resp: 229

Ion	Ratio	Lower	Upper
84	100		
49	89.9	87.1	130.7
51	0.0	28.2	42.2#
86	0.0	50.8	76.2#

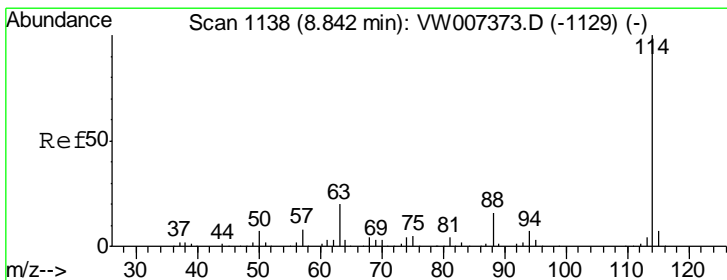
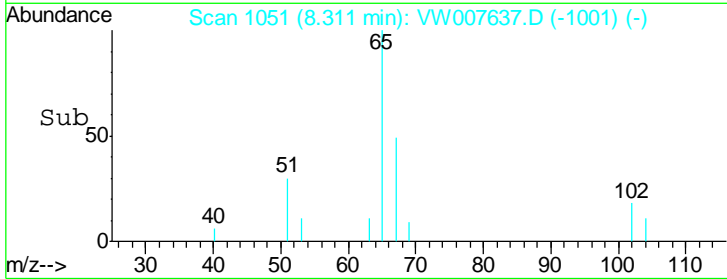
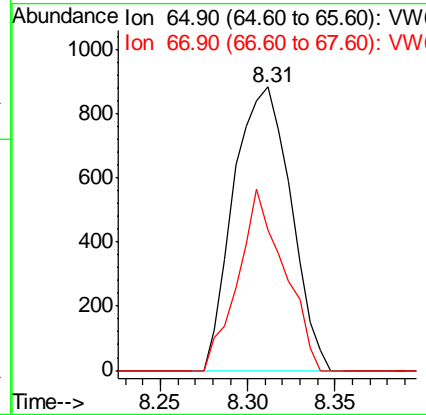
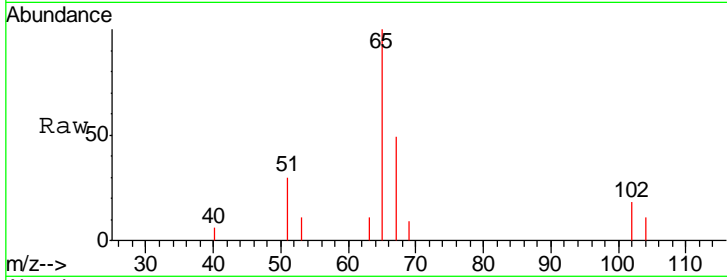




#33
 1,2-Dichloroethane-d4
 Concen: 61.859 ug/l
 RT: 8.31 min Scan# 1051
 Delta R.T. 0.01 min
 Lab File: VW007637.D
 Acq: 17 Dec 2018 17:41

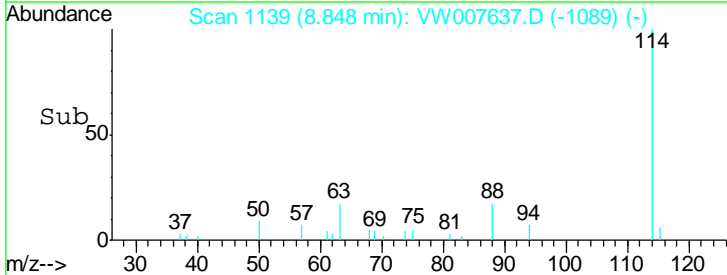
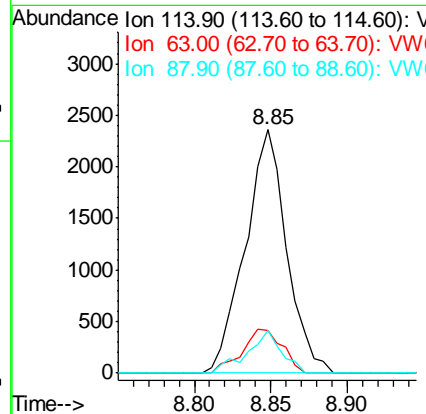
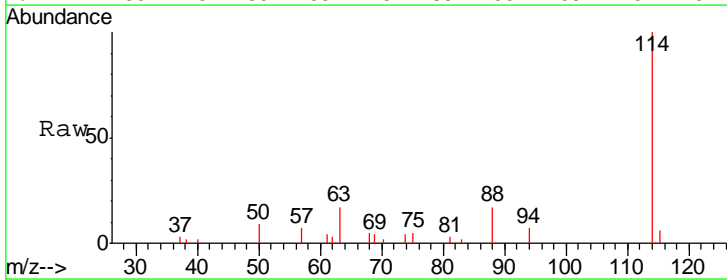
Instrument : MSVOA_W
 ClientSampleId : P001-SS001-0612-01MSD

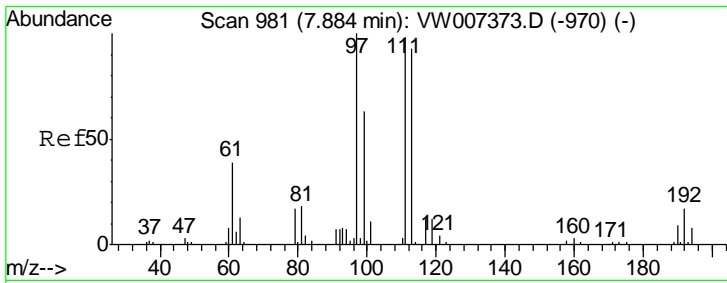
Tgt Ion	Resp	Lower	Upper
65	100		
67	51.5	0.0	101.6



#34
 1,4-Difluorobenzene
 Concen: 50.000 ug/l
 RT: 8.85 min Scan# 1139
 Delta R.T. 0.01 min
 Lab File: VW007637.D
 Acq: 17 Dec 2018 17:41

Tgt Ion	Resp	Lower	Upper
114	100		
63	17.4	0.0	39.6
88	17.3	0.0	31.4

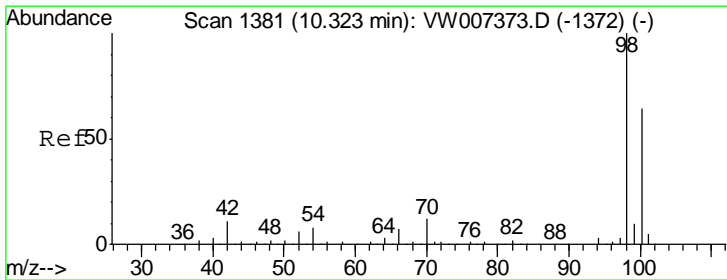
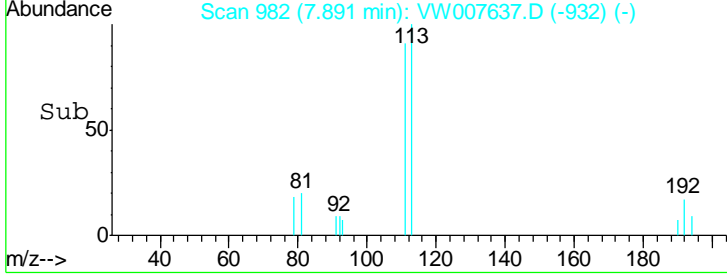
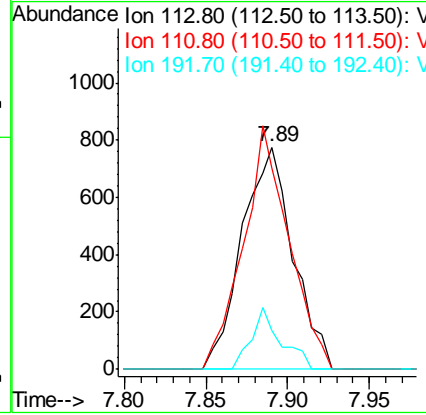
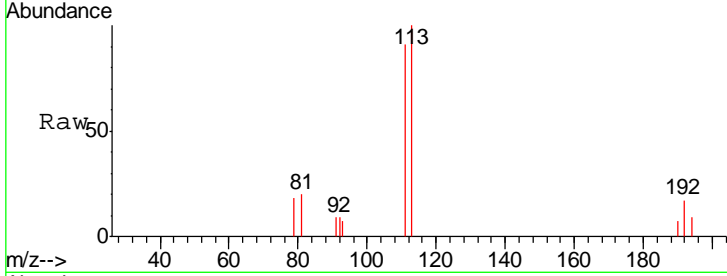




#35
 Dibromofluoromethane
 Concen: 63.061 ug/l
 RT: 7.89 min Scan# 982
 Delta R.T. 0.01 min
 Lab File: VW007637.D
 Acq: 17 Dec 2018 17:41

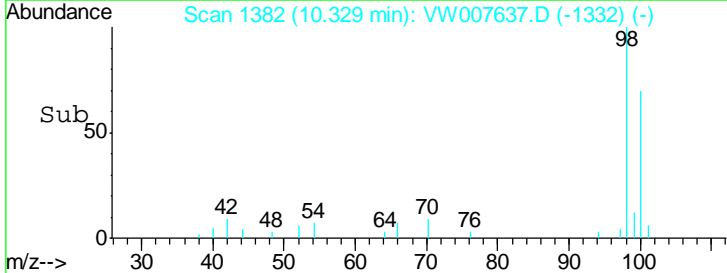
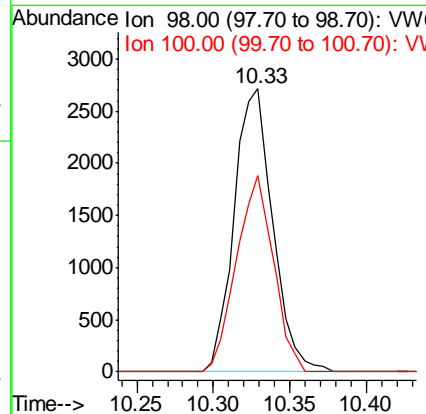
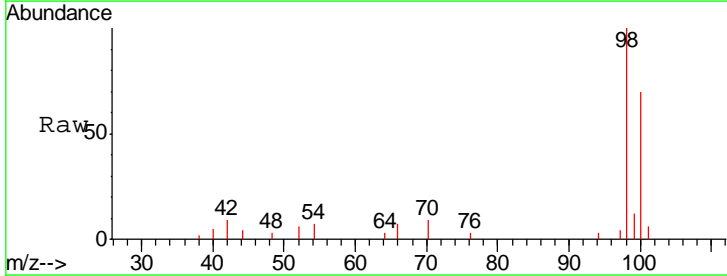
Instrument :
 MSVOA_W
ClientSampleId :
 P001-SS001-0612-01MSD

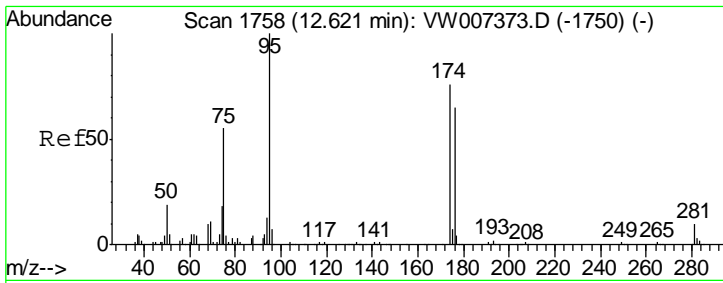
Tgt Ion	Resp	Lower	Upper
113	1693		
111	98.2	81.1	121.7
192	15.9	14.6	21.8



#50
 Toluene-d8
 Concen: 47.148 ug/l
 RT: 10.33 min Scan# 1382
 Delta R.T. 0.01 min
 Lab File: VW007637.D
 Acq: 17 Dec 2018 17:41

Tgt Ion	Resp	Lower	Upper
98	4746		
100	66.7	51.8	77.8

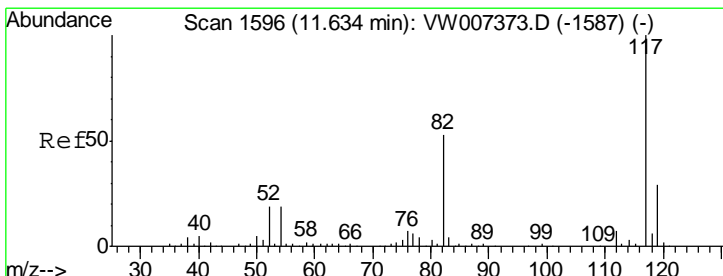
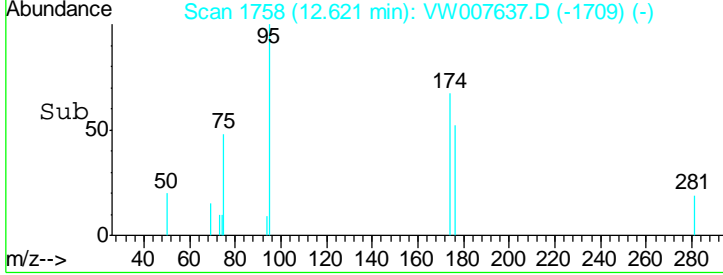
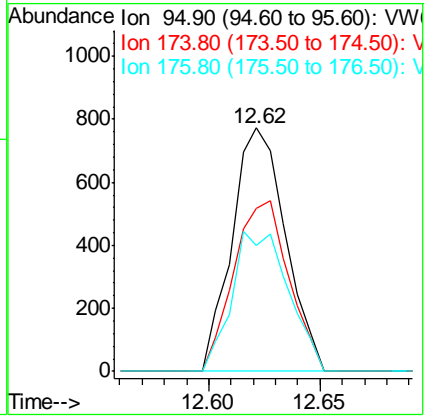
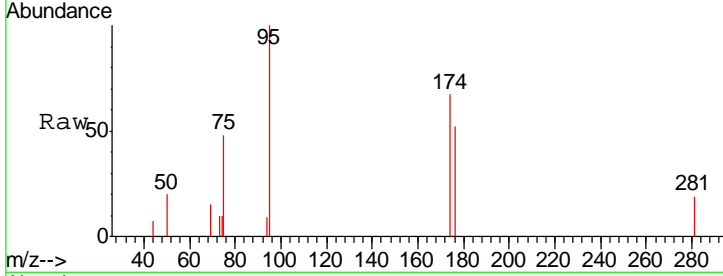




#62
 4-Bromofluorobenzene
 Concen: 34.855 ug/l
 RT: 12.62 min Scan# 1758
 Delta R.T. 0.00 min
 Lab File: VW007637.D
 Acq: 17 Dec 2018 17:41

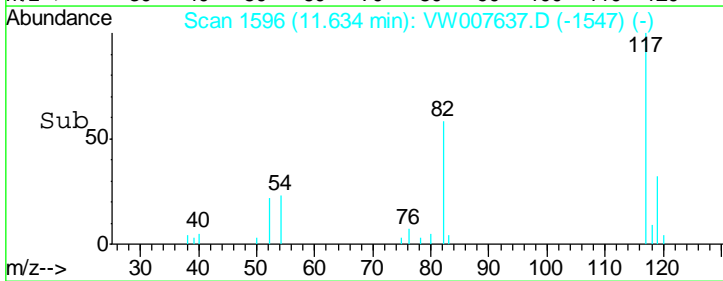
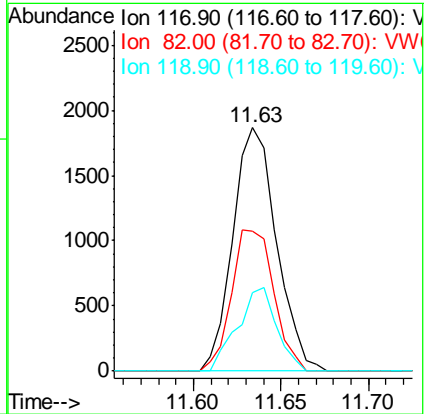
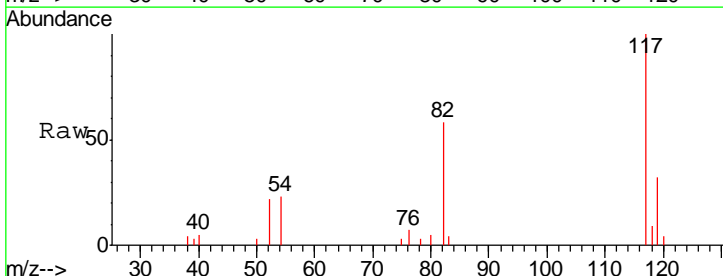
Instrument : MSVOA_W
 ClientSampled : P001-SS001-0612-01MSD

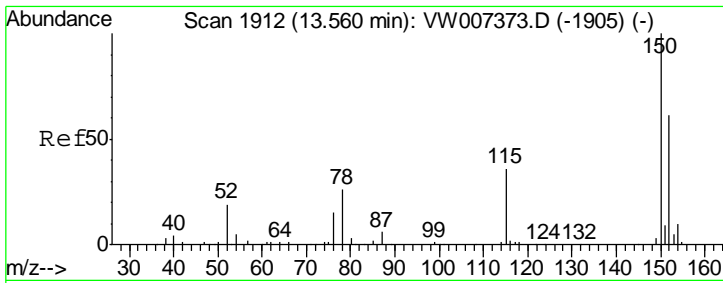
Tgt Ion	Resp	Lower	Upper
95	1290		
174	72.0	0.0	147.2
176	60.7	0.0	138.8



#63
 Chlorobenzene-d5
 Concen: 50.000 ug/l
 RT: 11.63 min Scan# 1596
 Delta R.T. 0.00 min
 Lab File: VW007637.D
 Acq: 17 Dec 2018 17:41

Tgt Ion	Resp	Lower	Upper
117	3242		
82	57.7	42.3	63.5
119	32.1	23.0	34.6





#72
 1,4-Dichlorobenzene-d4
 Concen: 50.000 ug/l
 RT: 13.57 min Scan# 1913
 Delta R.T. 0.01 min
 Lab File: VW007637.D
 Acq: 17 Dec 2018 17:41

Instrument : MSVOA_W
 ClientSampled : P001-SS001-0612-01MSD

Tgt Ion	Resp	Lower	Upper
152	100		
115	65.1	31.4	94.2
150	169.4	0.0	358.4

