

Data Path : Z:\VOASRV\HPCHEM1\MSVOA W\DATA\VW121919\
 Data File : VW014464.D
 Acq On : 19 Dec 2019 18:17
 Operator : SY/VA
 Sample : K6257-03
 Misc : 5.02G/10ML/MSVOA W/SOIL
 ALS Vial : 1 Sample Multiplier: 1

Instrument :
 MSVOA_W
Client Sampled :
 VHBLK01

Manual Integrations
APPROVED
 MMDadoda
 12/20/2019 1:20:13 PM

Quant Time: Dec 20 02:39:54 2019
 Quant Method : Z:\VOASRV\HPCHEM1\MSVOA_W\METHOD\SOM2WLM120519S.M
 Quant Title : VOC Analysis
 QLast Update : Fri Dec 20 01:12:43 2019
 Response via : Initial Calibration

Internal Standards	R.T.	QIon	Response	Conc	Units	Dev(Min)
1) 1,4-Difluorobenzene	8.84	114	1019436	25.00	ug/L	0.00
28) Chlorobenzene-d5	11.63	117	930819	25.00	ug/L	0.00
60) 1,4-Dichlorobenzene-d4	13.55	152	410056	25.00	ug/L	0.00

System Monitoring Compounds

4) Vinyl Chloride-d3	2.35	65	288291	18.68	ug/L	0.00
Spiked Amount	25.000	Range	30 - 150	Recovery	=	74.72%
7) Chloroethane-d5	2.89	69	251018	21.87	ug/L	0.00
Spiked Amount	25.000	Range	30 - 150	Recovery	=	87.48%
10) 1,1-Dichloroethene-d2	4.01	63	432574m	15.86	ug/L	0.00
Spiked Amount	25.000	Range	45 - 110	Recovery	=	63.44%
20) 2-Butanone-d5	7.07	46	229683	57.10	ug/L	0.00
Spiked Amount	50.000	Range	20 - 135	Recovery	=	114.20%
24) Chloroform-d	7.64	84	635880	24.50	ug/L	0.00
Spiked Amount	25.000	Range	40 - 150	Recovery	=	98.00%
26) 1,2-Dichloroethane-d4	8.31	65	357185m	26.25	ug/L	0.00
Spiked Amount	25.000	Range	70 - 130	Recovery	=	105.00%
29) Benzene-d6	8.27	84	1278401	23.43	ug/L	0.00
Spiked Amount	25.000	Range	20 - 135	Recovery	=	93.72%
33) 1,2-Dichloropropane-d6	9.27	67	415851	24.78	ug/L	0.00
Spiked Amount	25.000	Range	70 - 120	Recovery	=	99.12%
37) Toluene-d8	10.32	98	1125823	22.82	ug/L	0.00
Spiked Amount	25.000	Range	30 - 130	Recovery	=	91.28%
38) trans-1,3-Dichloropropene-	10.57	79	155218	22.04	ug/L	0.00
Spiked Amount	25.000	Range	30 - 135	Recovery	=	88.16%
39) 2-Hexanone-d5	10.92	63	170578	51.11	ug/L	0.00
Spiked Amount	50.000	Range	20 - 135	Recovery	=	102.22%
48) 1,1,2,2-Tetrachloroethane-	12.69	84	348496	25.48	ug/L	0.00
Spiked Amount	25.000	Range	45 - 120	Recovery	=	101.92%
61) 1,2-Dichlorobenzene-d4	13.85	152	399229	25.48	ug/L	0.00
Spiked Amount	25.000	Range	75 - 120	Recovery	=	101.92%

Target Compounds					Ovalue
13) Acetone	4.12	43	18999	4.899 ug/L	98
16) Methylene chloride	4.92	84	30642	1.961 ug/L	97

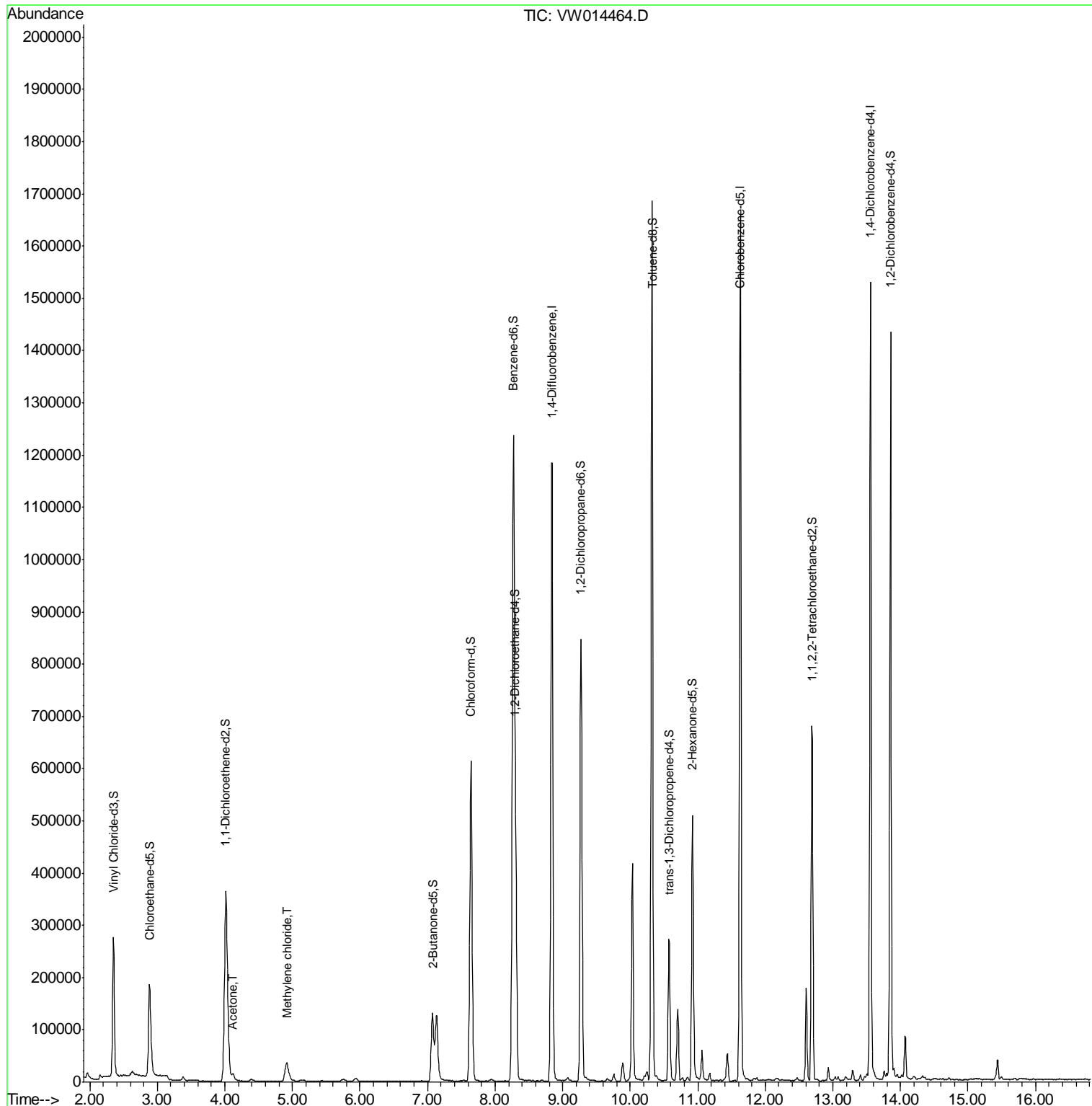
(#) = qualifier out of range (m) = manual integration (+) = signals summed

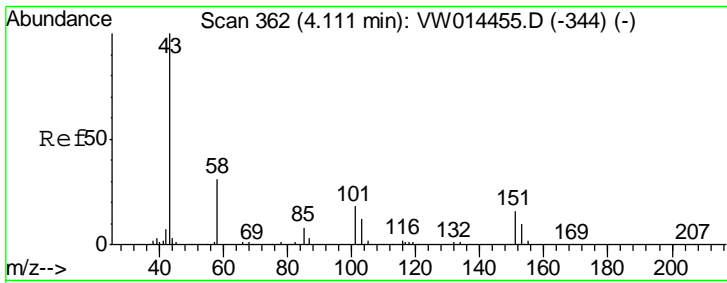
Data Path : Z:\VOASRV\HPCHEM1\MSVOA W\DATA\VW121919\
 Data File : VW014464.D
 Acq On : 19 Dec 2019 18:17
 Operator : SY/VA
 Sample : K6257-03
 Misc : 5.02G/10ML/MSVOA W/SOIL
 ALS Vial : 1 Sample Multiplier: 1

Instrument :
 MSVOA_W
 Client Sampled :
 VHBLK01

Manual Integrations
APPROVED
 MMDadoda
 12/20/2019 1:20:13 PM

Quant Time: Dec 20 02:39:54 2019
 Quant Method : Z:\VOASRV\HPCHEM1\MSVOA_W\METHOD\SOM2WLM120519S.M
 Quant Title : VOC Analysis
 QLast Update : Fri Dec 20 01:12:43 2019
 Response via : Initial Calibration





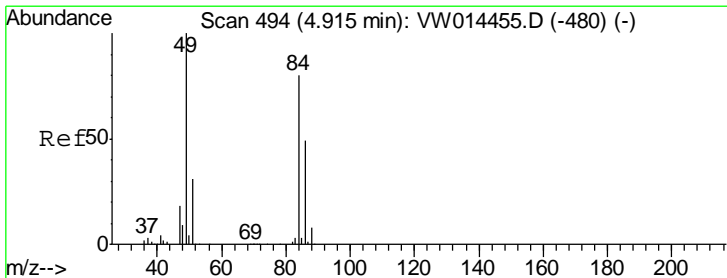
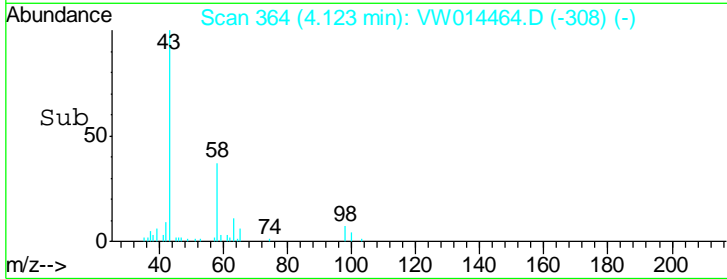
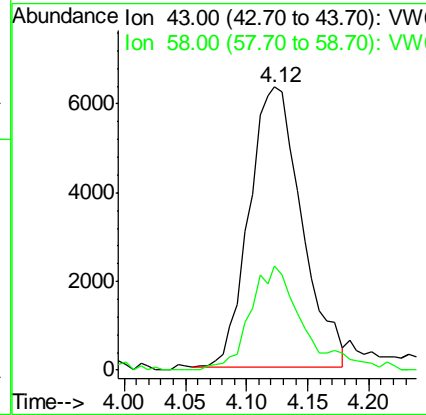
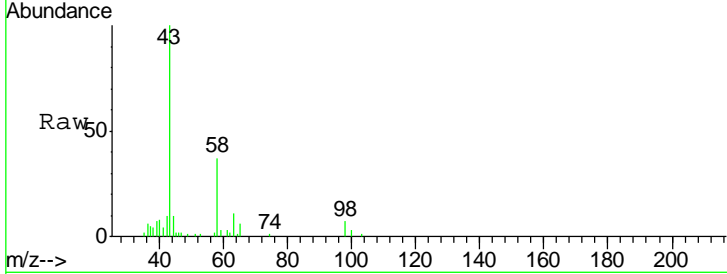
#13
 Acetone
 Concen: 4.899 ug/L
 RT: 4.12 min Scan# 364
 Delta R.T. 0.01 min
 Lab File: VW014464.D
 Acq: 19 Dec 2019 18:17

Instrument :
 MSVOA_W
 ClientSampled :
 VHBLK01

Tgt Ion	Ratio	Lower	Upper
43	100		
58	33.6	0.0	65.4

Manual Integrations
 APPROVED

MMDadoda
 12/20/2019 1:20:13 PM



#16
 Methylene chloride
 Concen: 1.961 ug/L
 RT: 4.92 min Scan# 495
 Delta R.T. 0.01 min
 Lab File: VW014464.D
 Acq: 19 Dec 2019 18:17

Tgt Ion	Ratio	Lower	Upper
84	100		
49	117.7	84.2	156.4
86	65.1	43.7	81.1

