

Data Path : Z:\voasrv\HPCHEM1\MSVOA_W\Data\VW121924\
 Data File : VW031396.D
 Acq On : 19 Dec 2024 20:56
 Operator : SY/MD
 Sample : P5302-08
 Misc : 5.22g/10mL/MSVOA_W/SOIL/B
 ALS Vial : 32 Sample Multiplier: 1

Instrument :
 MSVOA_W
ClientSampleId :
 E2AR8

Quant Time: Dec 20 03:09:52 2024
 Quant Method : Z:\voasrv\HPCHEM1\MSVOA_W\Method\SFAMWLM121324SMA.M
 Quant Title : SFAM01.0
 QLast Update : Fri Dec 20 03:08:41 2024
 Response via : Initial Calibration

Compound	R.T.	QIon	Response	Conc	Units	Dev(Min)

Internal Standards						
1) 1,4-Difluorobenzene	8.837	114	947524	25.000	ug/L	0.00
28) Chlorobenzene-d5	11.629	117	730772	25.000	ug/L	0.00
58) 1,4-Dichlorobenzene-d4	13.556	152	272667	25.000	ug/L	0.00
System Monitoring Compounds						
4) Vinyl Chloride-d3	2.357	65	257904	18.090	ug/L	0.00
Spiked Amount	25.000	Range 30 - 150	Recovery =	72.360%		
7) Chloroethane-d5	2.893	69	190240	18.039	ug/L	0.00
Spiked Amount	25.000	Range 30 - 150	Recovery =	72.160%		
11) 1,1-Dichloroethene-d2	4.015	65	109837	16.242	ug/L	0.00
Spiked Amount	25.000	Range 45 - 110	Recovery =	64.960%		
21) 2-Butanone-d5	7.087	46	83056	30.935	ug/L	0.00
Spiked Amount	50.000	Range 20 - 135	Recovery =	61.860%		
24) Chloroform-d	7.648	84	375512	14.464	ug/L	0.00
Spiked Amount	25.000	Range 40 - 150	Recovery =	57.840%		
26) 1,2-Dichloroethane-d4	8.301	65	201643	15.466	ug/L	0.00
Spiked Amount	25.000	Range 70 - 130	Recovery =	61.880%#		
32) Benzene-d6	8.270	84	801887	17.120	ug/L	0.00
Spiked Amount	25.000	Range 20 - 135	Recovery =	68.480%		
36) 1,2-Dichloropropane-d6	9.270	67	220289	16.137	ug/L	0.00
Spiked Amount	25.000	Range 70 - 120	Recovery =	64.560%#		
41) Toluene-d8	10.319	98	701396	16.097	ug/L	0.00
Spiked Amount	25.000	Range 30 - 130	Recovery =	64.400%		
43) trans-1,3-Dichloroprop...	10.575	79	82831	13.160	ug/L	0.00
Spiked Amount	25.000	Range 30 - 135	Recovery =	52.640%		
47) 2-Hexanone-d5	10.922	63	65123	35.474	ug/L	0.00
Spiked Amount	50.000	Range 20 - 135	Recovery =	70.940%		
56) 1,1,2,2-Tetrachloroeth...	12.690	84	146332	17.073	ug/L	0.00
Spiked Amount	25.000	Range 45 - 120	Recovery =	68.280%		
66) 1,2-Dichlorobenzene-d4	13.848	152	150950	14.912	ug/L	0.00
Spiked Amount	25.000	Range 75 - 120	Recovery =	59.640%#		

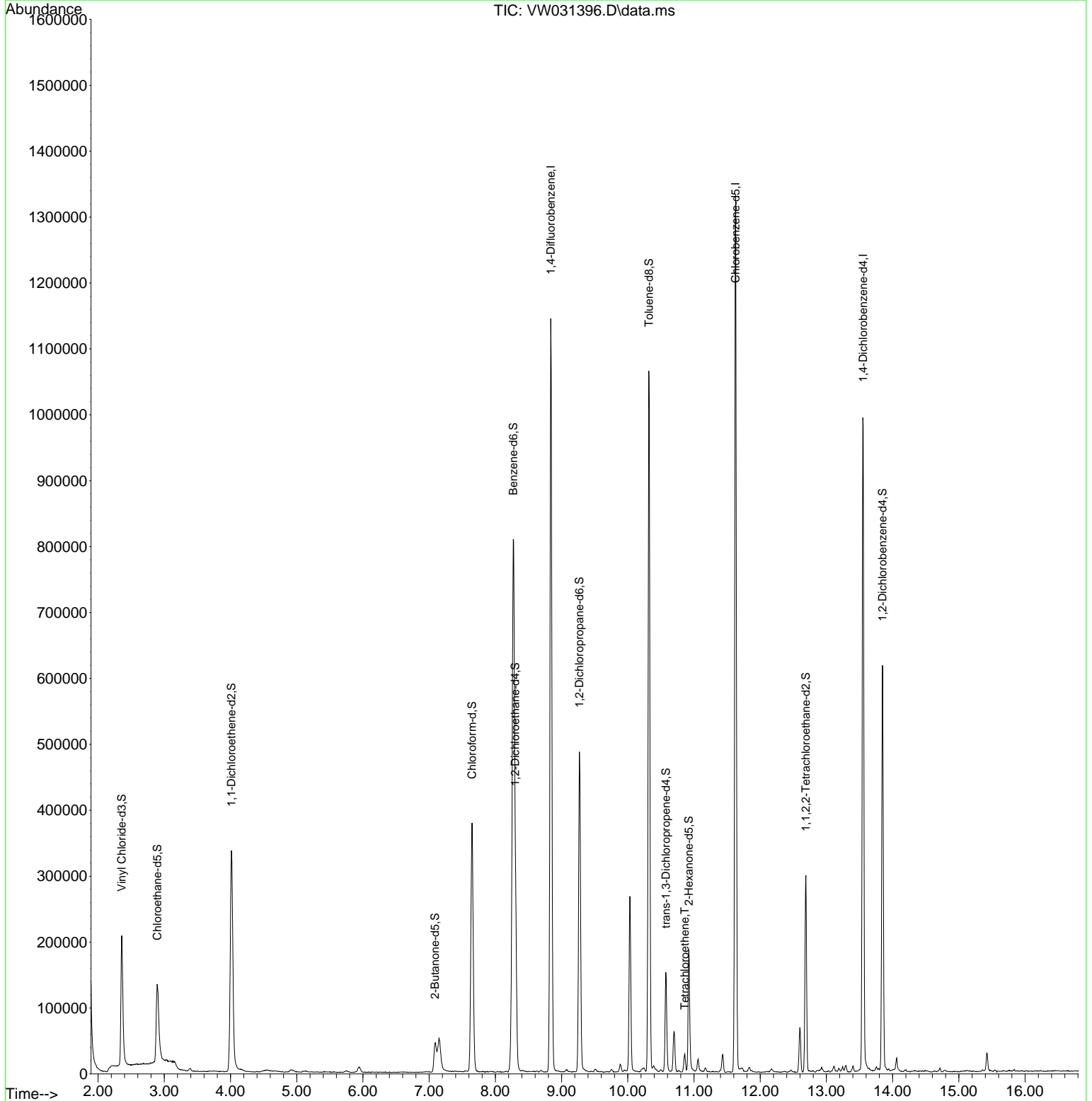
Target Compounds						Qvalue
46) Tetrachloroethene	10.861	164	5535	0.593	ug/L	96

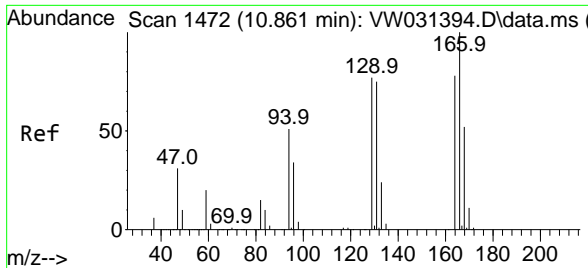
(#) = qualifier out of range (m) = manual integration (+) = signals summed

Data Path : Z:\voasrv\HPCHEM1\MSVOA_W\Data\VW121924\
 Data File : VW031396.D
 Acq On : 19 Dec 2024 20:56
 Operator : SY/MD
 Sample : P5302-08
 Misc : 5.22g/10mL/MSVOA_W/SOIL/B
 ALS Vial : 32 Sample Multiplier: 1

Instrument :
 MSVOA_W
 ClientSampleId :
 E2AR8

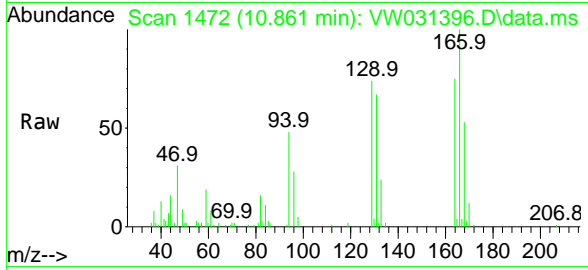
Quant Time: Dec 20 03:09:52 2024
 Quant Method : Z:\voasrv\HPCHEM1\MSVOA_W\Method\SFAMWLM121324SMA.M
 Quant Title : SFAM01.0
 QLast Update : Fri Dec 20 03:08:41 2024
 Response via : Initial Calibration





#46
 Tetrachloroethene
 Concen: 0.593 ug/L
 RT: 10.861 min Scan# 14
 Delta R.T. 0.000 min
 Lab File: VW031396.D
 Acq: 19 Dec 2024 20:56

Instrument : MSVOA_W
 ClientSampleId : E2AR8



Tgt Ion:164 Resp: 5535

Ion	Ratio	Lower	Upper
164	100		
129	98.5	73.5	136.5
131	89.4	66.6	123.8
166	133.2	92.7	172.3

