

Data Path : Z:\VOASRV\HPCHEM1\MSVOA W\DATA\VW122018\  
 Data File : VW007663.D  
 Acq On : 18 Dec 2018 17:19  
 Operator : SY/AP  
 Sample : J6379-09  
 Misc : 3.69G/5ML/MSVOA W/SOIL  
 ALS Vial : 17 Sample Multiplier: 1

Instrument :  
 MSVOA\_W  
 ClientSampled :

Quant Time: Dec 19 03:20:00 2018  
 Quant Method : Z:\VOASRV\HPCHEM1\MSVOA\_W\METHOD\82W121118S.M  
 Quant Title : SW846 8260  
 QLast Update : Tue Dec 11 02:58:16 2018  
 Response via : Initial Calibration

Internal Standards	R.T.	QIon	Response	Conc	Units	Dev(Min)
1) Pentafluorobenzene	7.95	168	11510	50.00	ug/l	0.00
34) 1,4-Difluorobenzene	8.84	114	33040	50.00	ug/l	0.00
63) Chlorobenzene-d5	11.63	117	35712	50.00	ug/l	0.00
72) 1,4-Dichlorobenzene-d4	13.56	152	13955	50.00	ug/l	0.00

## System Monitoring Compounds

33) 1,2-Dichloroethane-d4	8.31	65	27984	219.15	ug/l	0.00
Spiked Amount				50.000		
Recovery						= 438.30%
35) Dibromofluoromethane	7.88	113	19661	98.30	ug/l	0.00
Spiked Amount				50.000		
Recovery						= 196.60%
50) Toluene-d8	10.32	98	39030	52.05	ug/l	0.00
Spiked Amount				50.000		
Recovery						= 104.10%
62) 4-Bromofluorobenzene	12.62	95	15425	55.94	ug/l	0.00
Spiked Amount				50.000		
Recovery						= 111.88%

## Target Compounds

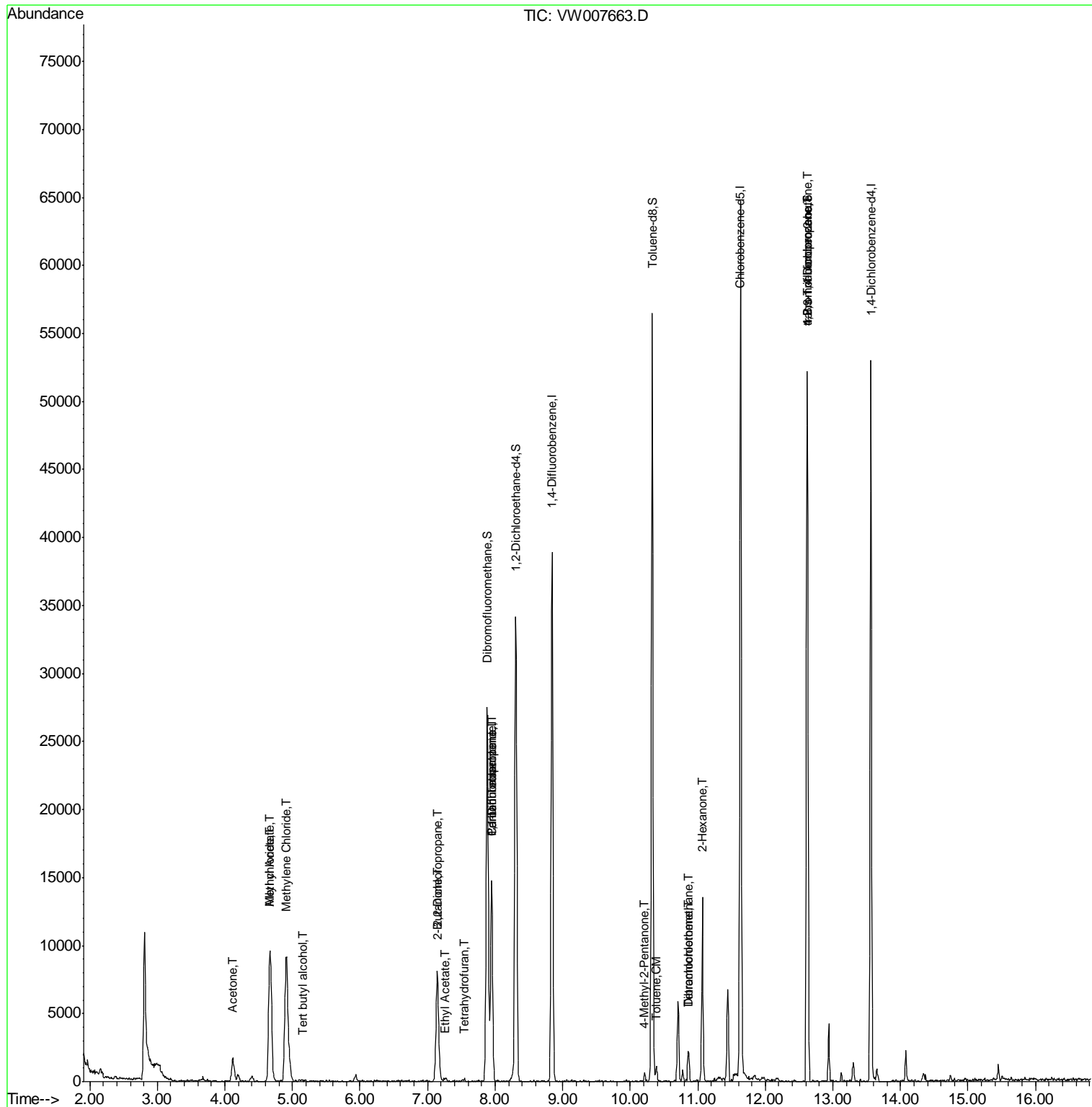
						Qvalue
11) Tert butyl alcohol	5.15	59	97	11.061	ug/l #	74
14) Allyl chloride	4.67	41	233	1.400	ug/l #	18
16) Acetone	4.12	43	3306	148.222	ug/l	92
18) Methyl Acetate	4.67	43	17931	296.202	ug/l	98
20) Methylene Chloride	4.92	84	8353	70.054	ug/l	95
25) 2-Butanone	7.16	43	264	9.066	ug/l #	45
26) 2,2-Dichloropropane	7.14	77	555	3.879	ug/l #	52
29) Tetrahydrofuran	7.54	42	221	11.989	ug/l #	30
36) 1,1-Dichloropropene	7.95	75	853	2.830	ug/l #	40
37) Ethyl Acetate	7.26	43	485	4.326	ug/l #	66
38) Carbon Tetrachloride	7.95	117	1163	3.546	ug/l #	13
51) 4-Methyl-2-Pentanone	10.21	43	477	4.559	ug/l #	76
52) Toluene	10.38	92	632	1.168	ug/l	95
59) 2-Hexanone	11.07	43	178	2.551	ug/l #	24
60) Dibromochloromethane	10.87	129	503	2.664	ug/l #	11
64) Tetrachloroethene	10.87	164	579	2.255	ug/l #	67
76) 1,2,3-Trichloropropane	12.62	75	8057	70.023	ug/l #	1
81) trans-1,4-Dichloro-2-buten	12.62	75	8057	154.680	ug/l #	7

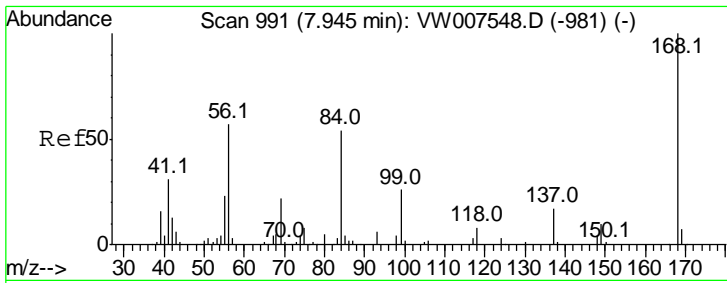
(#) = qualifier out of range (m) = manual integration (+) = signals summed

Data Path : Z:\VOASRV\HPCHEM1\MSVOA W\DATA\VW122018\  
 Data File : VW007663.D  
 Acq On : 18 Dec 2018 17:19  
 Operator : SY/AP  
 Sample : J6379-09  
 Misc : 3.69G/5ML/MSVOA W/SOIL  
 ALS Vial : 17 Sample Multiplier: 1

Instrument :  
 MSVOA\_W  
 Client Sampled :

Quant Time: Dec 19 03:20:00 2018  
 Quant Method : Z:\VOASRV\HPCHEM1\MSVOA\_W\METHOD\82W121118S.M  
 Quant Title : SW846 8260  
 QLast Update : Tue Dec 11 02:58:16 2018  
 Response via : Initial Calibration

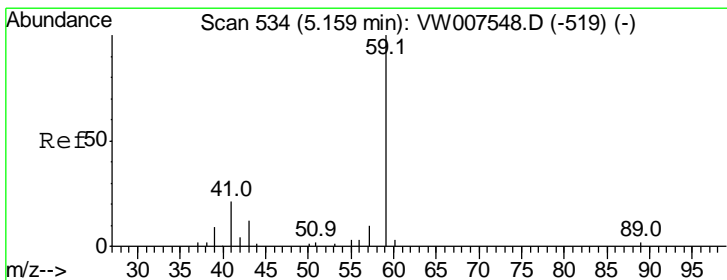
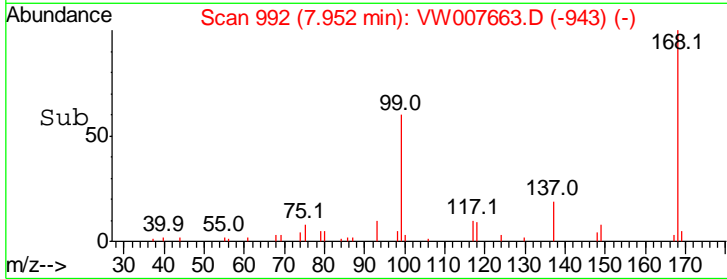
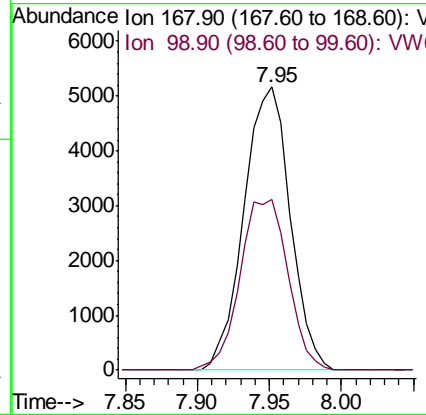
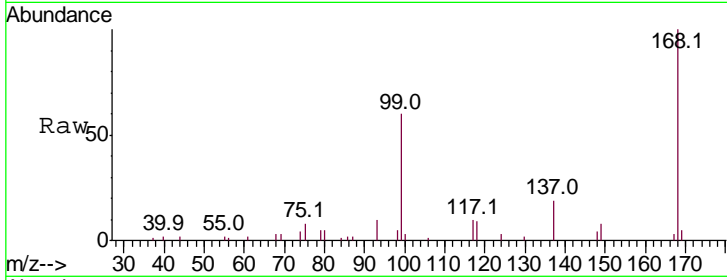




#1  
 Pentafluorobenzene  
 Concen: 50.000 ug/l  
 RT: 7.95 min Scan# 992  
 Delta R.T. 0.00 min  
 Lab File: VW007663.D  
 Acq: 18 Dec 2018 17:19

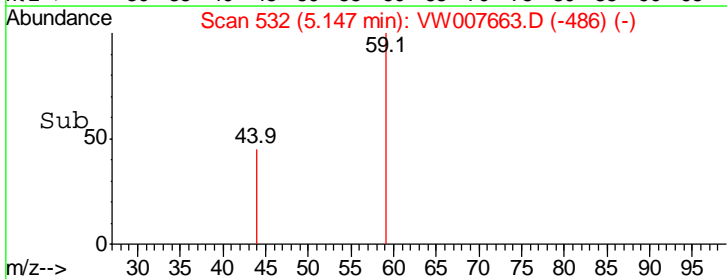
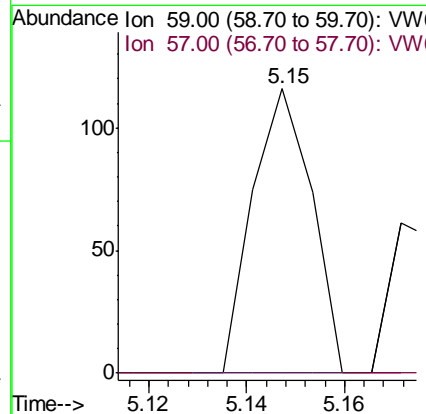
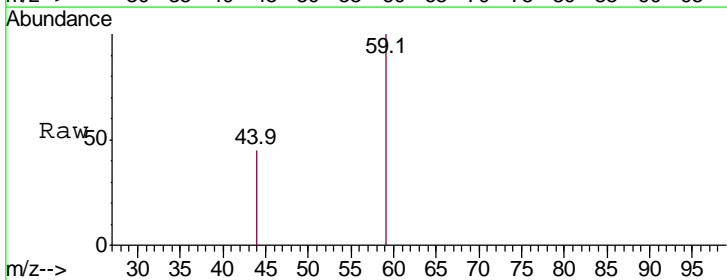
Instrument :  
 MSVOA\_W  
 ClientSampled :

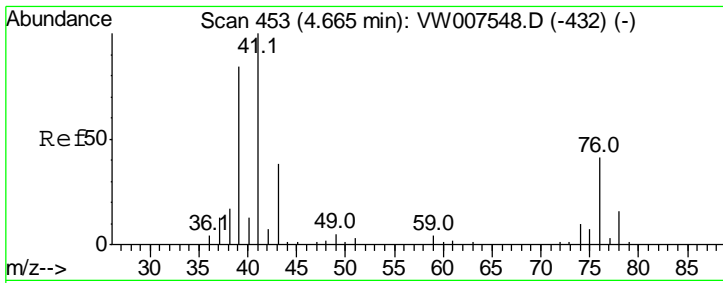
Tgt Ion: 168 Resp: 11510  
 Ion Ratio Lower Upper  
 168 100  
 99 60.4 48.3 72.5



#11  
 Tert butyl alcohol  
 Concen: 11.061 ug/l  
 RT: 5.15 min Scan# 532  
 Delta R.T. -0.02 min  
 Lab File: VW007663.D  
 Acq: 18 Dec 2018 17:19

Tgt Ion: 59 Resp: 97  
 Ion Ratio Lower Upper  
 59 100  
 57 0.0 7.6 11.4#

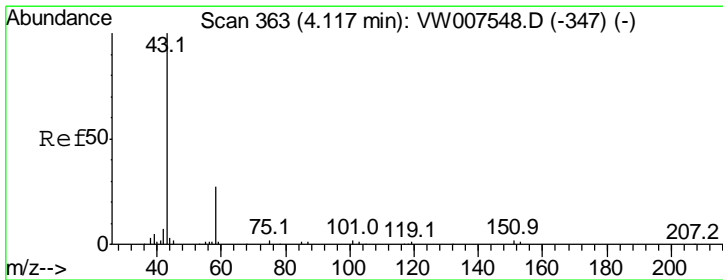
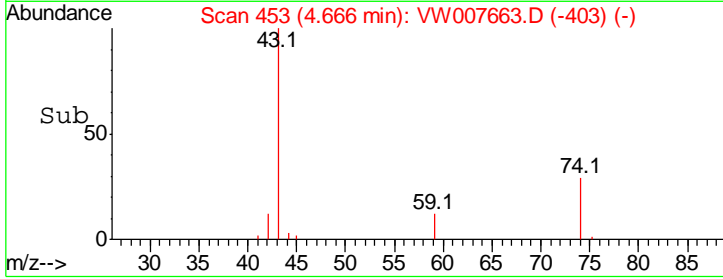
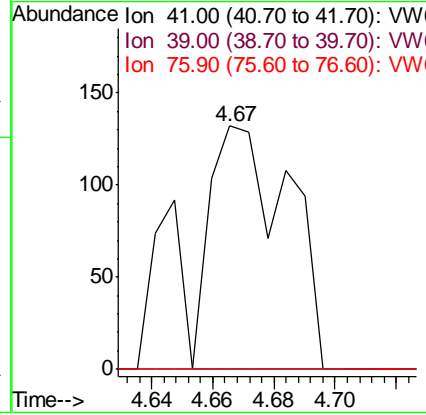
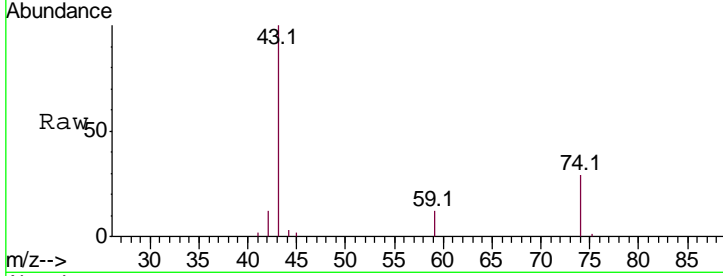




#14  
 Allvl chloride  
 Concen: 1.400 ug/l  
 RT: 4.67 min Scan# 453  
 Delta R.T. 0.01 min  
 Lab File: VW007663.D  
 Acq: 18 Dec 2018 17:19

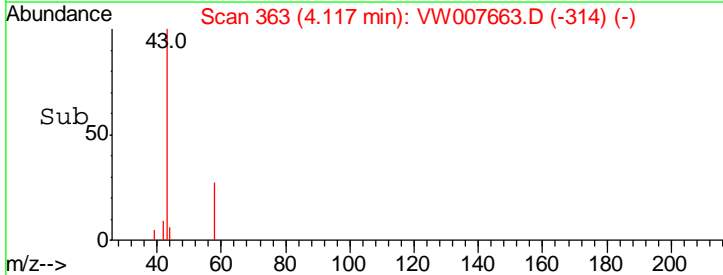
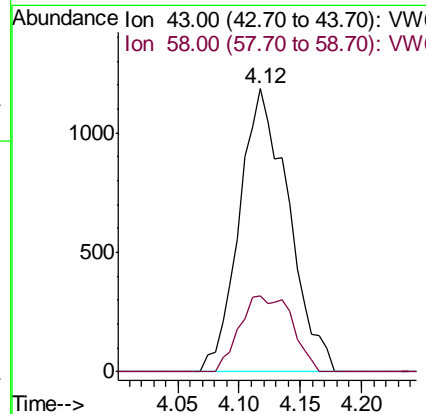
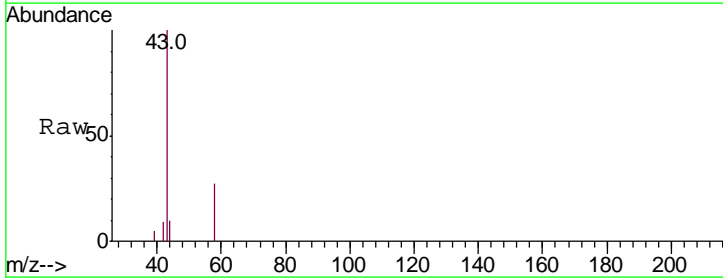
Instrument :  
 MSVOA\_W  
 ClientSampled :

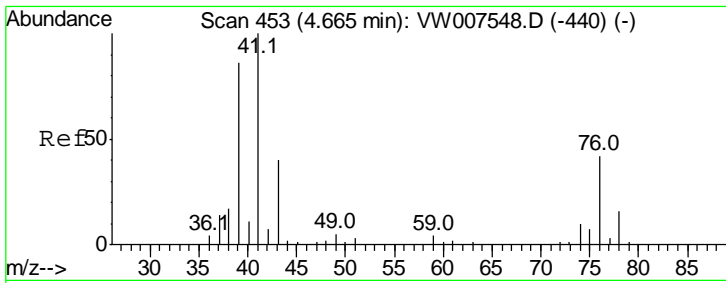
Tgt Ion	Resp	Lower	Upper
41	100		
39	0.0	63.4	95.2#
76	0.0	32.1	48.1#



#16  
 Acetone  
 Concen: 148.222 ug/l  
 RT: 4.12 min Scan# 363  
 Delta R.T. 0.00 min  
 Lab File: VW007663.D  
 Acq: 18 Dec 2018 17:19

Tgt Ion	Resp	Lower	Upper
43	100		
58	26.9	24.9	37.3



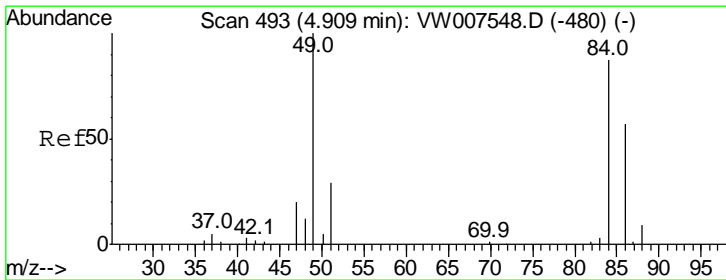
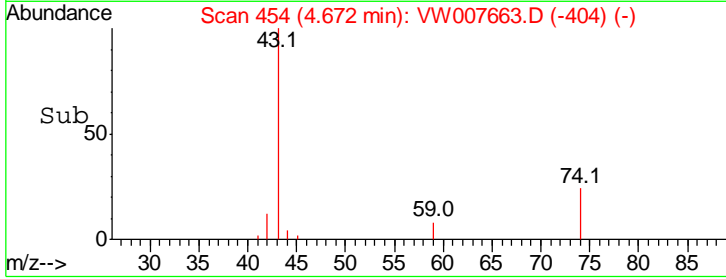
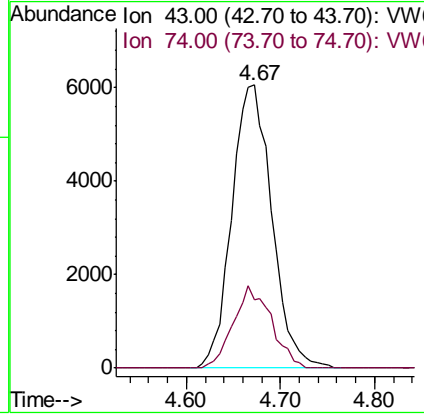
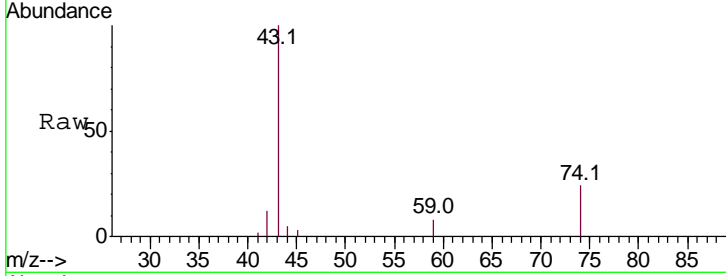


#18  
Methyl Acetate  
Concen: 296.202 ug/l  
RT: 4.67 min Scan# 454  
Delta R.T. 0.01 min  
Lab File: VW007663.D  
Acq: 18 Dec 2018 17:19

Instrument :  
MSVOA\_W  
ClientSampled :

Tgt Ion: 43 Resp: 17931

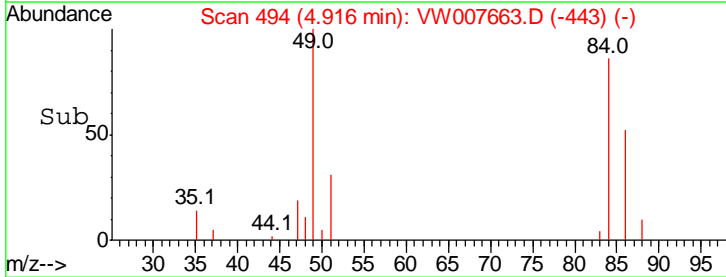
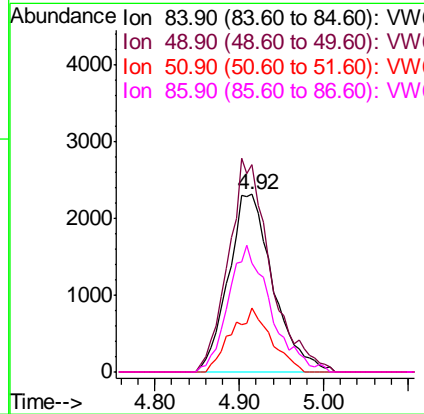
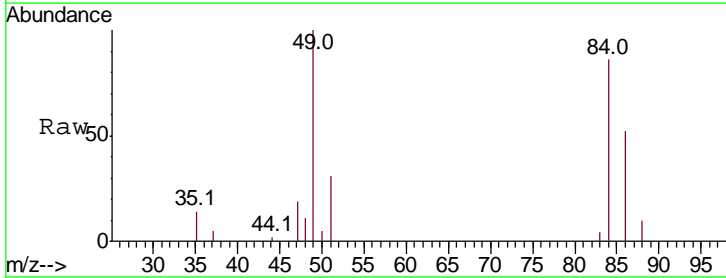
Ion	Ratio	Lower	Upper
43	100		
74	27.6	21.1	31.7

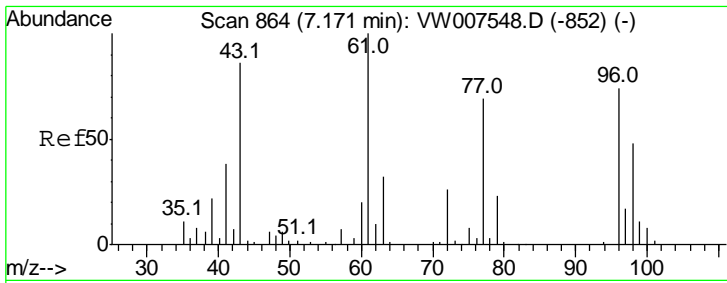


#20  
Methylene Chloride  
Concen: 70.054 ug/l  
RT: 4.92 min Scan# 494  
Delta R.T. 0.01 min  
Lab File: VW007663.D  
Acq: 18 Dec 2018 17:19

Tgt Ion: 84 Resp: 8353

Ion	Ratio	Lower	Upper
84	100		
49	116.6	87.1	130.7
51	35.8	28.2	42.2
86	61.2	50.8	76.2

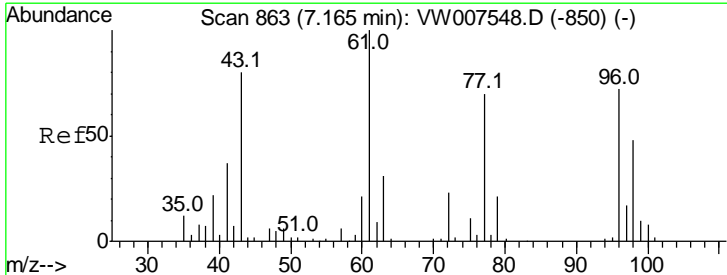
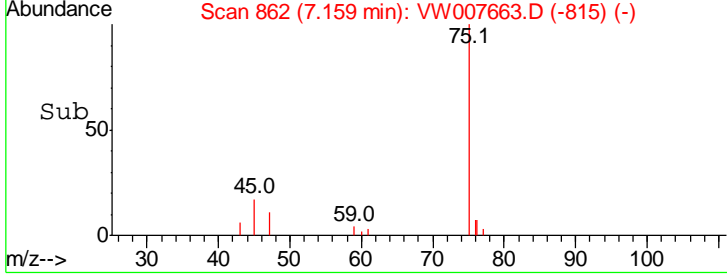
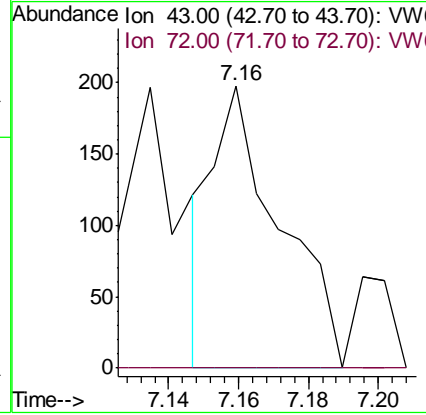
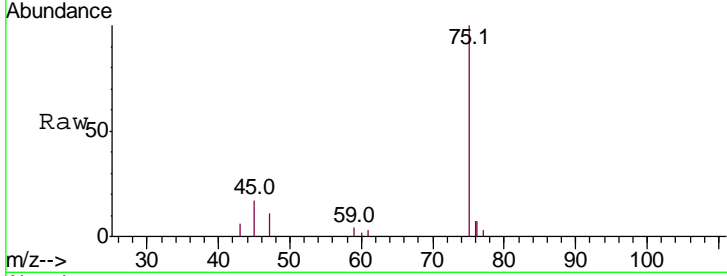




#25  
 2-Butanone  
 Concen: 9.066 ug/l  
 RT: 7.16 min Scan# 862  
 Delta R.T. -0.01 min  
 Lab File: VW007663.D  
 Acq: 18 Dec 2018 17:19

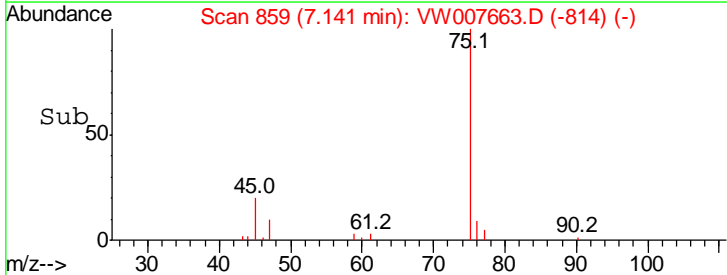
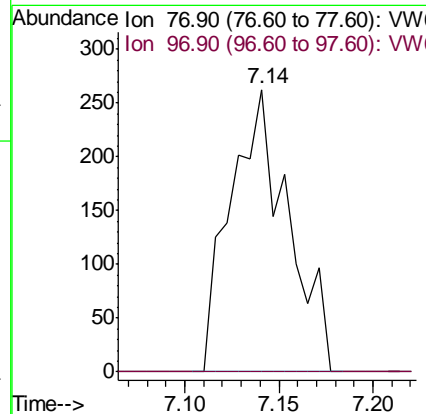
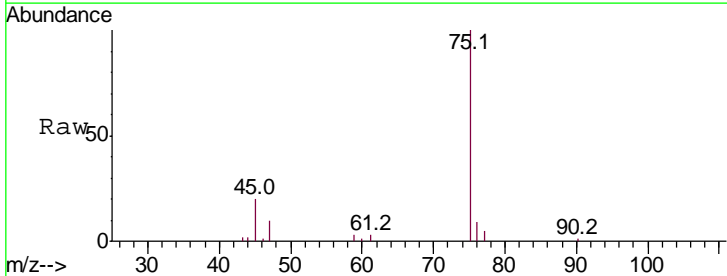
Instrument :  
 MSVOA\_W  
 ClientSampled :

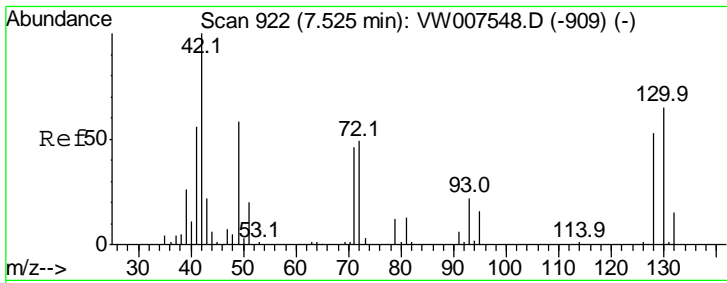
Tgt Ion: 43 Resp: 264  
 Ion Ratio Lower Upper  
 43 100  
 72 0.0 23.4 35.2#



#26  
 2,2-Dichloropropane  
 Concen: 3.879 ug/l  
 RT: 7.14 min Scan# 859  
 Delta R.T. -0.02 min  
 Lab File: VW007663.D  
 Acq: 18 Dec 2018 17:19

Tgt Ion: 77 Resp: 555  
 Ion Ratio Lower Upper  
 77 100  
 97 0.0 11.6 34.8#

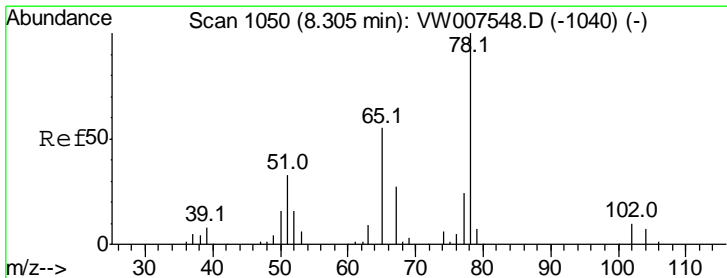
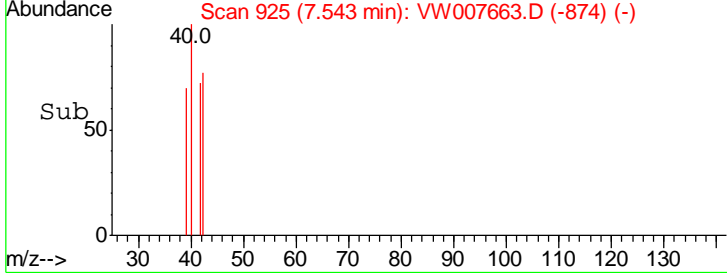
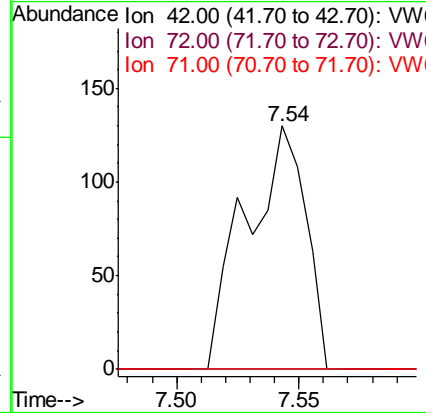
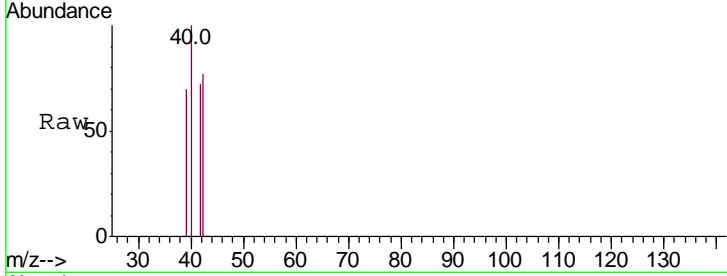




#29  
 Tetrahydrofuran  
 Concen: 11.989 ug/l  
 RT: 7.54 min Scan# 925  
 Delta R.T. 0.01 min  
 Lab File: VW007663.D  
 Acq: 18 Dec 2018 17:19

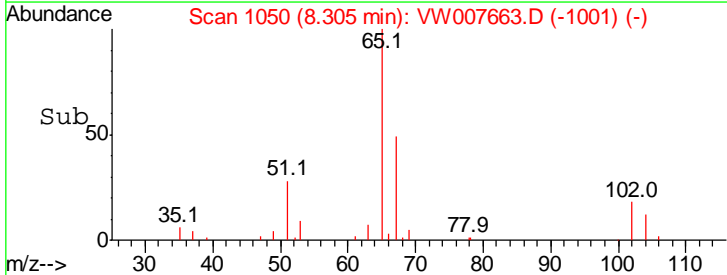
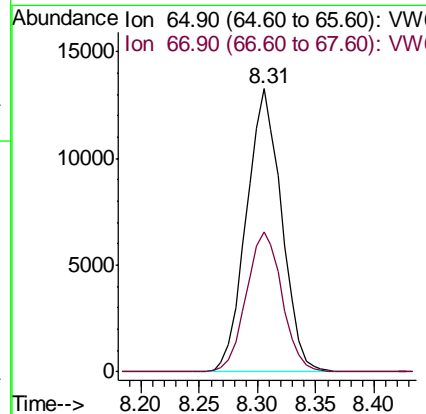
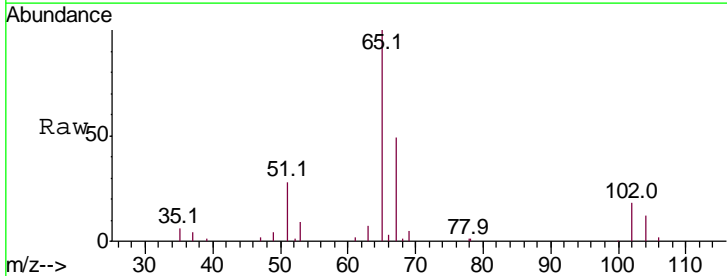
Instrument :  
 MSVOA\_W  
 ClientSampled :

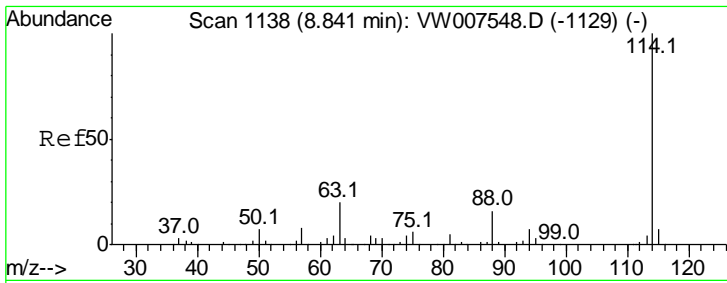
Tgt Ion	Ratio	Lower	Upper
42	100		
72	0.0	38.2	57.4#
71	0.0	35.5	53.3#



#33  
 1,2-Dichloroethane-d4  
 Concen: 219.148 ug/l  
 RT: 8.31 min Scan# 1050  
 Delta R.T. 0.00 min  
 Lab File: VW007663.D  
 Acq: 18 Dec 2018 17:19

Tgt Ion	Ratio	Lower	Upper
65	100		
67	50.3	0.0	101.6

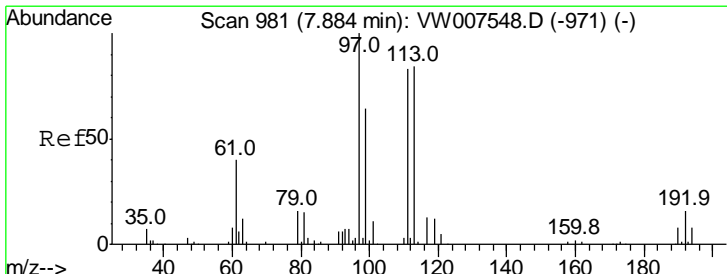
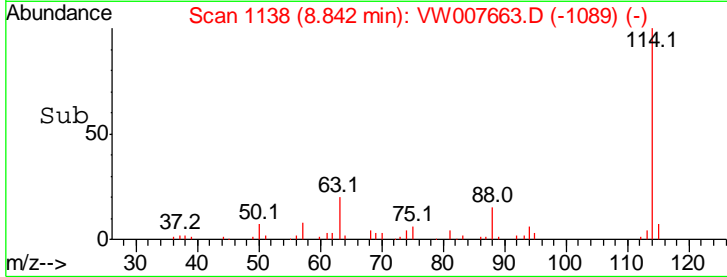
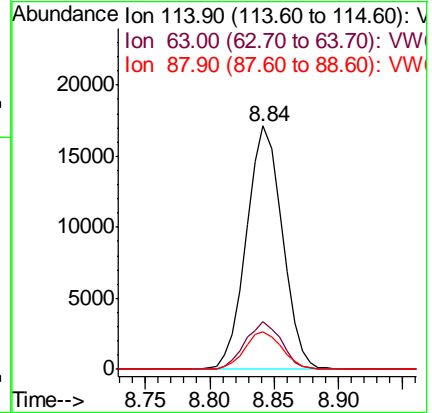
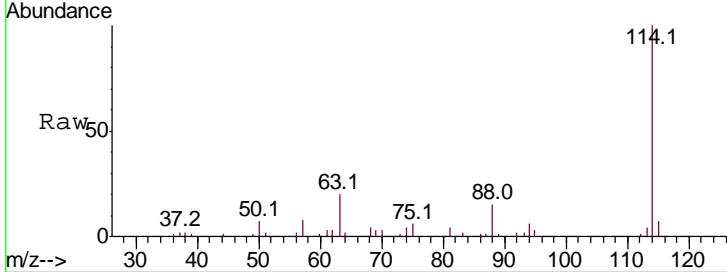




#34  
 1,4-Difluorobenzene  
 Concen: 50.000 ug/l  
 RT: 8.84 min Scan# 1138  
 Delta R.T. 0.00 min  
 Lab File: VW007663.D  
 Acq: 18 Dec 2018 17:19

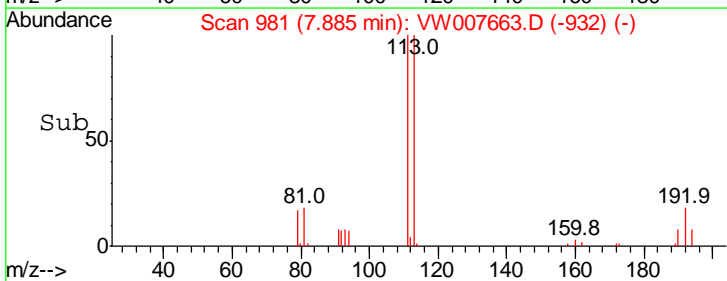
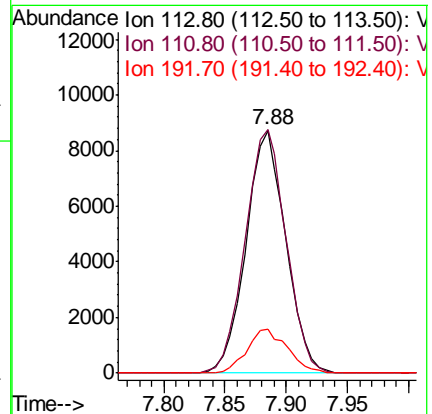
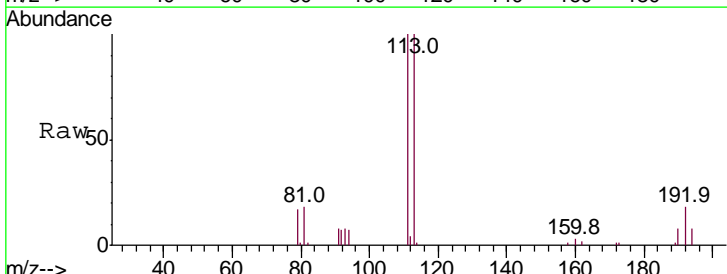
Instrument :  
 MSVOA\_W  
 ClientSampled :

Tgt Ion	Resp	Lower	Upper
114	100		
63	19.8	0.0	39.6
88	15.3	0.0	31.4

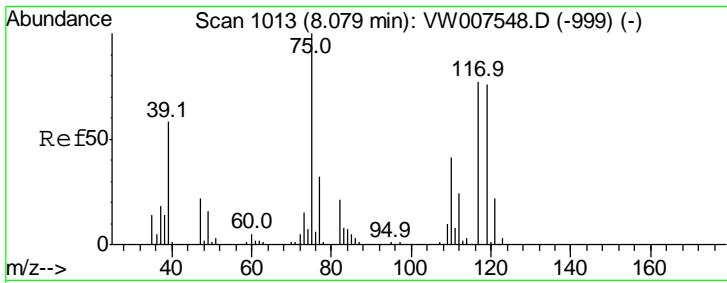


#35  
 Dibromofluoromethane  
 Concen: 98.303 ug/l  
 RT: 7.88 min Scan# 981  
 Delta R.T. 0.00 min  
 Lab File: VW007663.D  
 Acq: 18 Dec 2018 17:19

Tgt Ion	Resp	Lower	Upper
113	100		
111	103.4	81.1	121.7
192	18.4	14.6	21.8



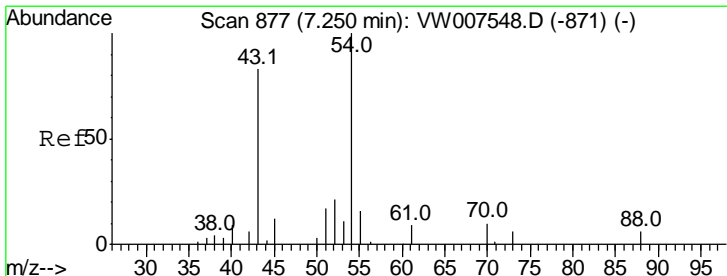
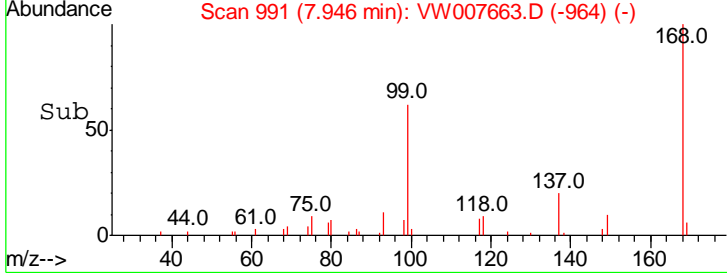
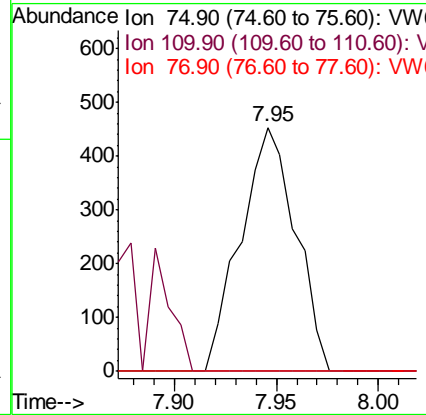
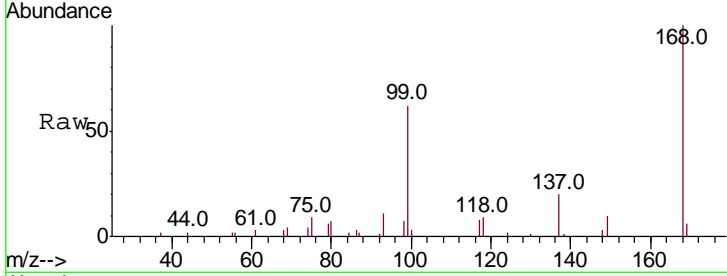




#36  
 1,1-Dichloropropene  
 Concen: 2.830 ug/l  
 RT: 7.95 min Scan# 991  
 Delta R.T. -0.13 min  
 Lab File: VW007663.D  
 Acq: 18 Dec 2018 17:19

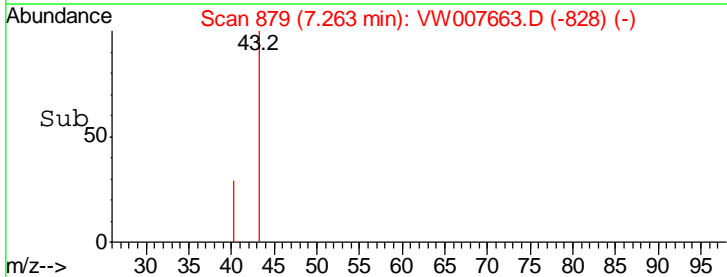
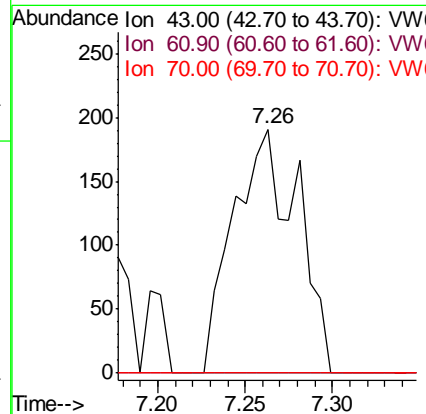
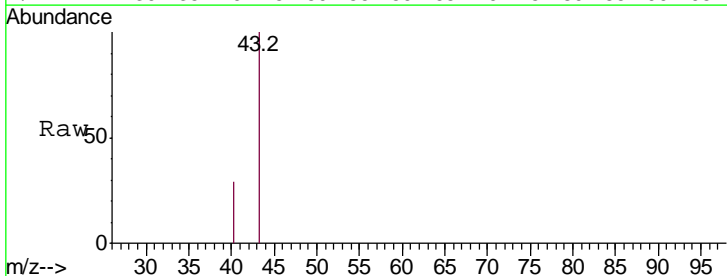
Instrument :  
 MSVOA\_W  
 ClientSampled :

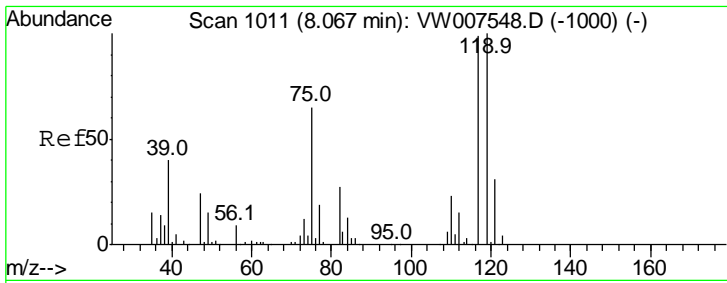
Tgt Ion	Resp	Lower	Upper
75	100		
110	0.0	18.5	55.5#
77	0.0	25.6	38.4#



#37  
 Ethyl Acetate  
 Concen: 4.326 ug/l  
 RT: 7.26 min Scan# 879  
 Delta R.T. 0.01 min  
 Lab File: VW007663.D  
 Acq: 18 Dec 2018 17:19

Tgt Ion	Resp	Lower	Upper
43	100		
61	0.0	12.1	18.1#
70	0.0	10.0	15.0#

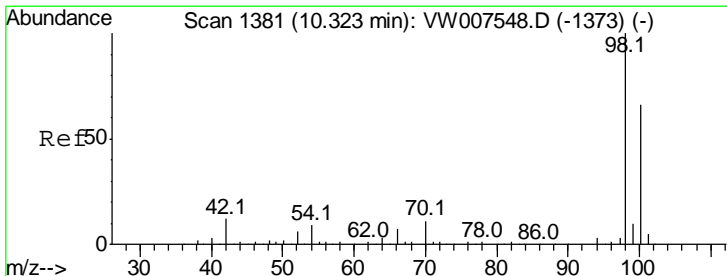
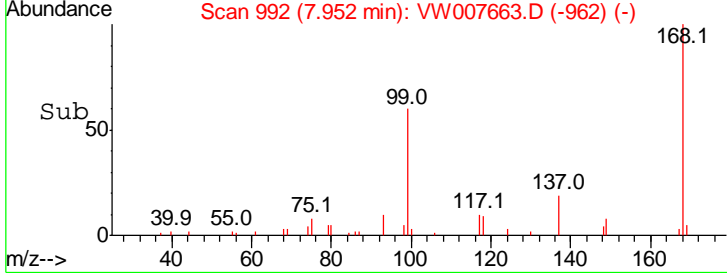
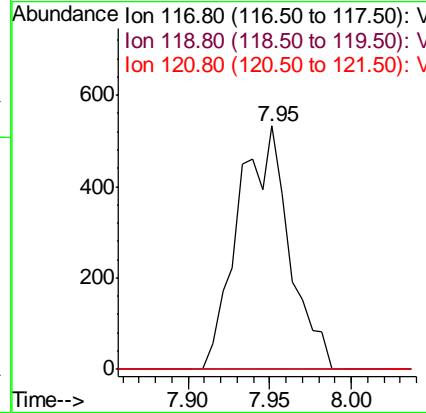
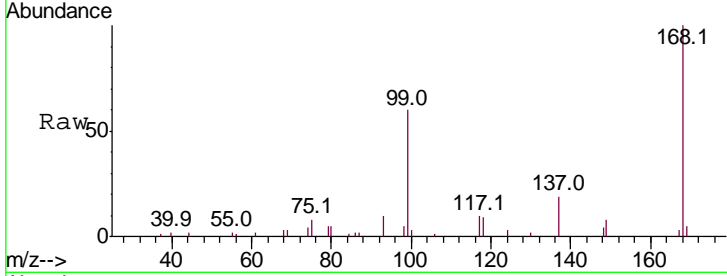




#38  
 Carbon Tetrachloride  
 Concen: 3.546 ug/l  
 RT: 7.95 min Scan# 992  
 Delta R.T. -0.12 min  
 Lab File: VW007663.D  
 Acq: 18 Dec 2018 17:19

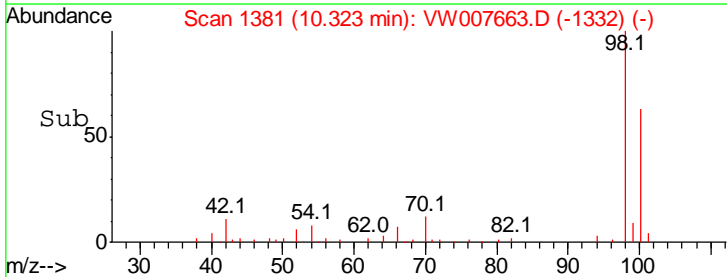
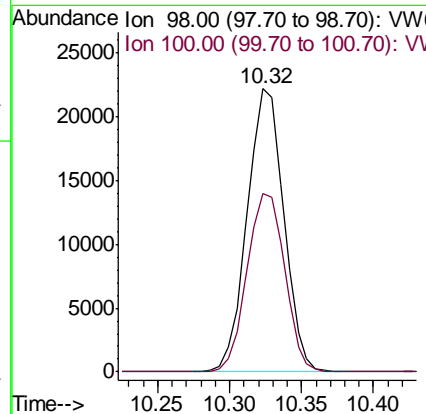
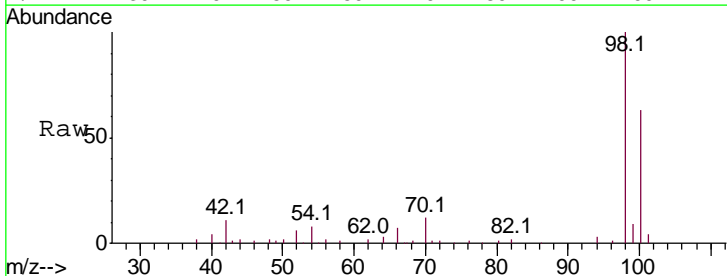
Instrument :  
 MSVOA\_W  
 ClientSampled :

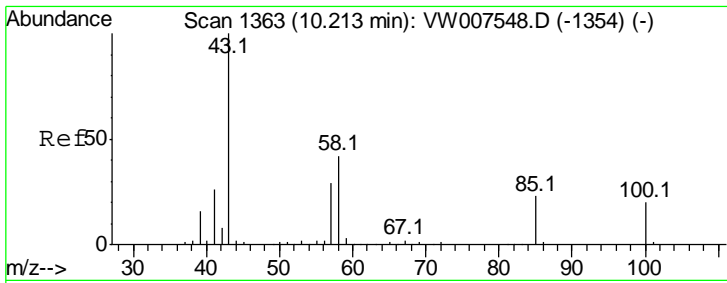
Tgt Ion	Resp	Lower	Upper
117	100		
119	0.0	74.3	111.5#
121	0.0	24.3	36.5#



#50  
 Toluene-d8  
 Concen: 52.047 ug/l  
 RT: 10.32 min Scan# 1381  
 Delta R.T. 0.00 min  
 Lab File: VW007663.D  
 Acq: 18 Dec 2018 17:19

Tgt Ion	Resp	Lower	Upper
98	100		
100	64.9	51.8	77.8

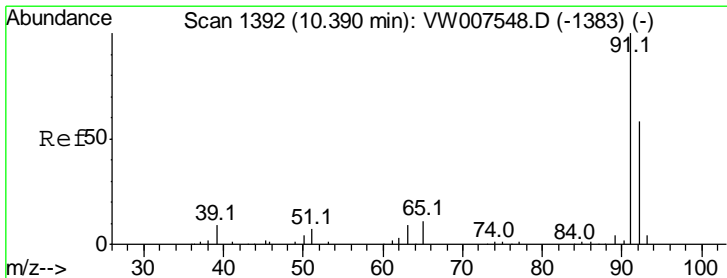
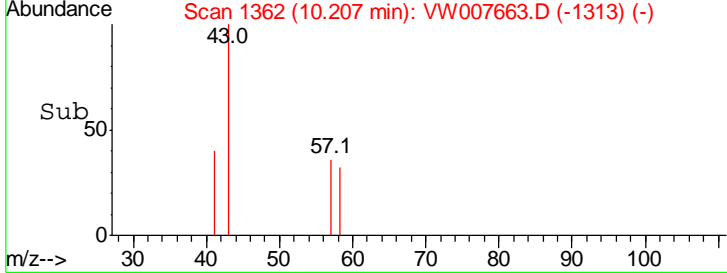
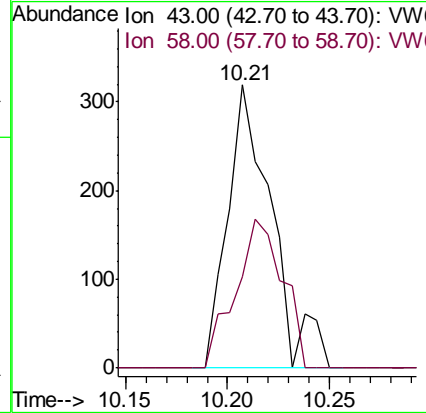
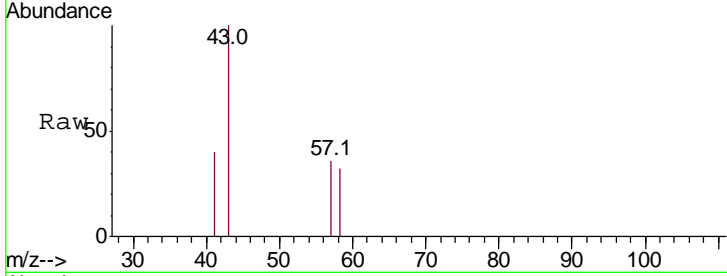




#51  
 4-Methyl-2-Pentanone  
 Concen: 4.559 ug/l  
 RT: 10.21 min Scan# 1362  
 Delta R.T. 0.00 min  
 Lab File: VW007663.D  
 Acq: 18 Dec 2018 17:19

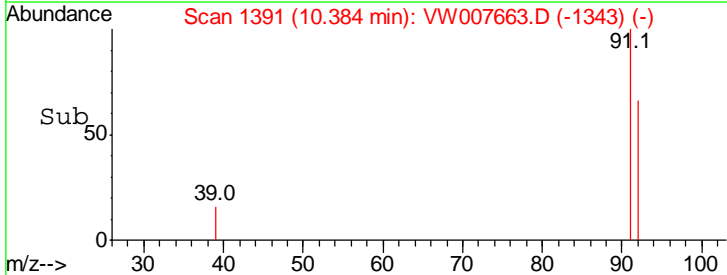
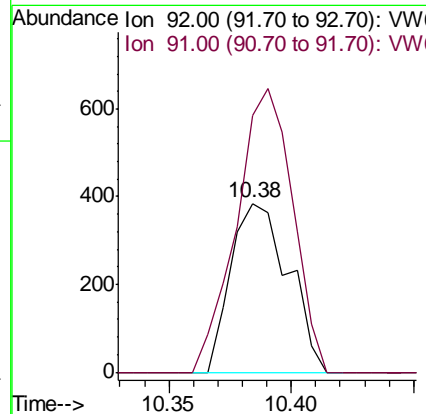
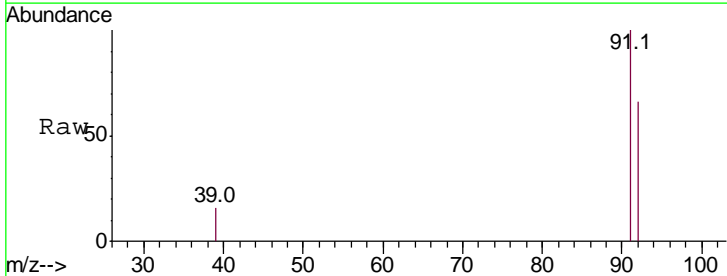
Instrument :  
 MSVOA\_W  
 ClientSampled :

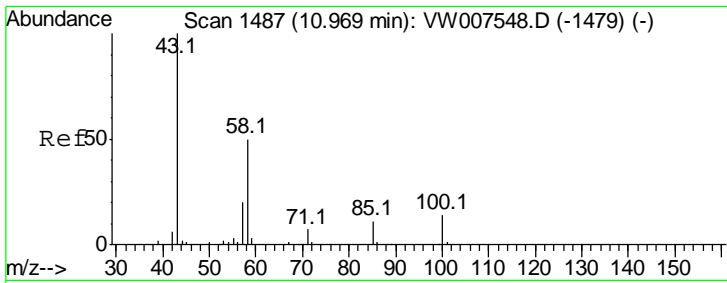
Tgt Ion: 43 Resp: 477  
 Ion Ratio Lower Upper  
 43 100  
 58 56.6 33.1 49.7#



#52  
 Toluene  
 Concen: 1.168 ug/l  
 RT: 10.38 min Scan# 1391  
 Delta R.T. -0.01 min  
 Lab File: VW007663.D  
 Acq: 18 Dec 2018 17:19

Tgt Ion: 92 Resp: 632  
 Ion Ratio Lower Upper  
 92 100  
 91 163.8 136.2 204.2

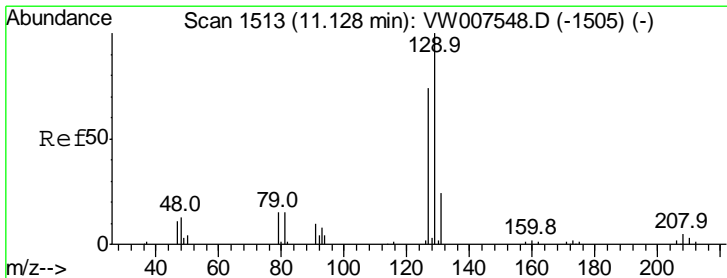
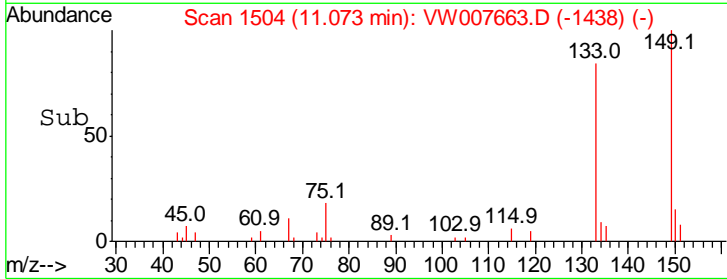
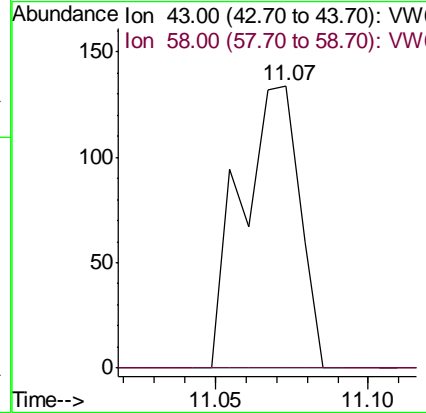
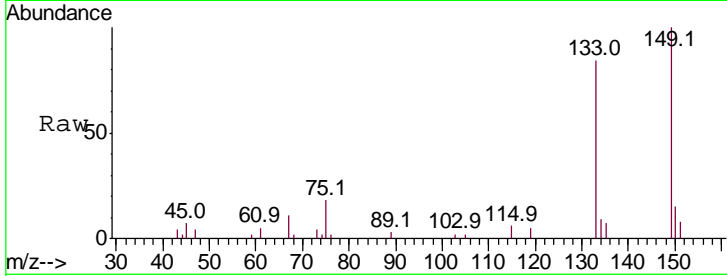




#59  
 2-Hexanone  
 Concen: 2.551 ug/l  
 RT: 11.07 min Scan# 1504  
 Delta R.T. 0.10 min  
 Lab File: VW007663.D  
 Acq: 18 Dec 2018 17:19

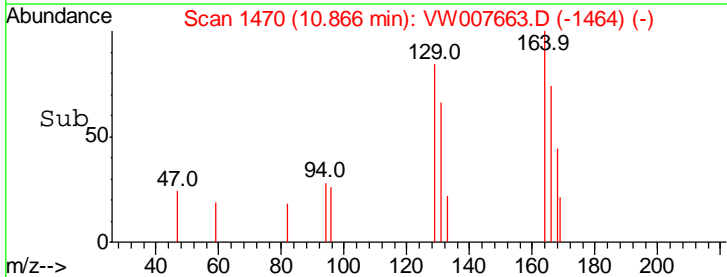
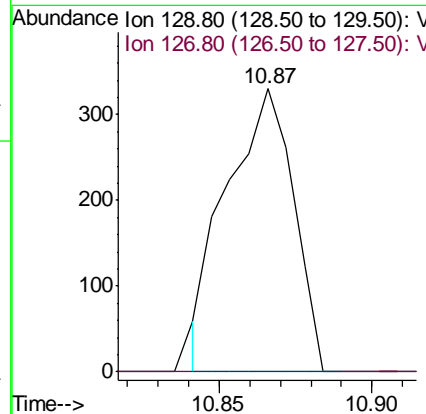
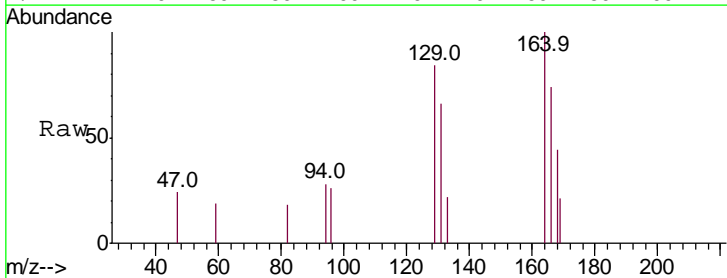
Instrument :  
 MSVOA\_W  
 ClientSampled :

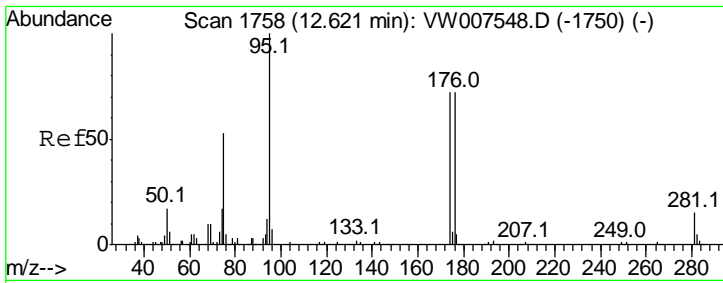
Tgt Ion: 43 Resp: 178  
 Ion Ratio Lower Upper  
 43 100  
 58 0.0 27.1 81.3#



#60  
 Dibromochloromethane  
 Concen: 2.664 ug/l  
 RT: 10.87 min Scan# 1470  
 Delta R.T. -0.26 min  
 Lab File: VW007663.D  
 Acq: 18 Dec 2018 17:19

Tgt Ion: 129 Resp: 503  
 Ion Ratio Lower Upper  
 129 100  
 127 0.0 38.1 114.3#

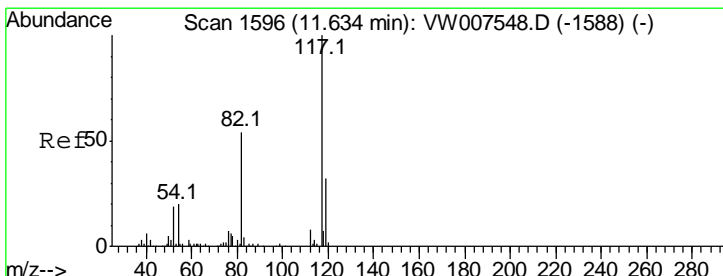
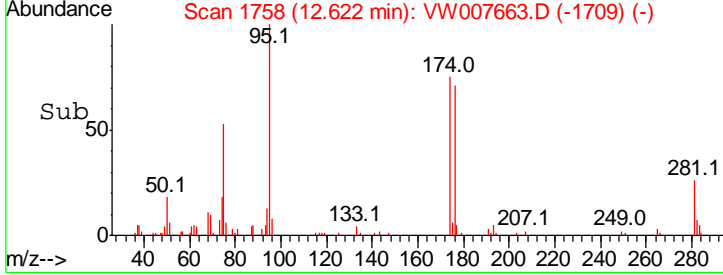
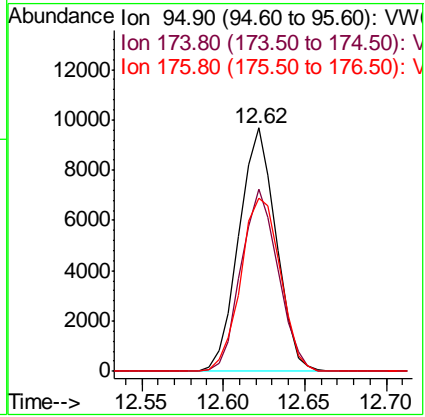
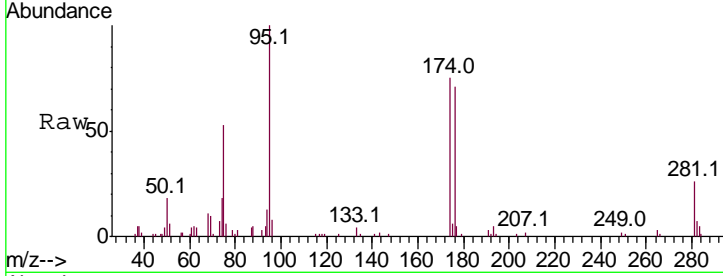




#62  
 4-Bromofluorobenzene  
 Concen: 55.944 ug/l  
 RT: 12.62 min Scan# 1758  
 Delta R.T. 0.00 min  
 Lab File: VW007663.D  
 Acq: 18 Dec 2018 17:19

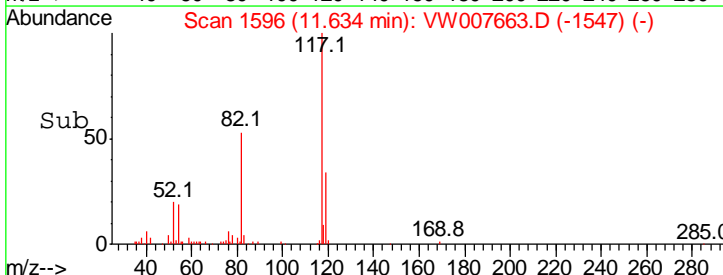
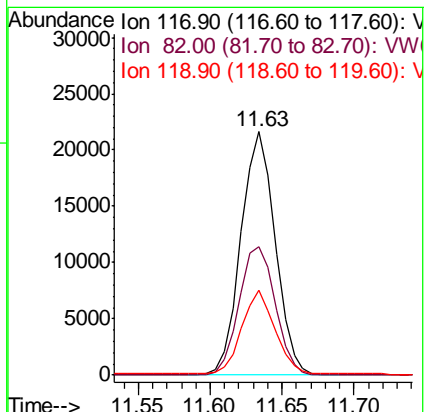
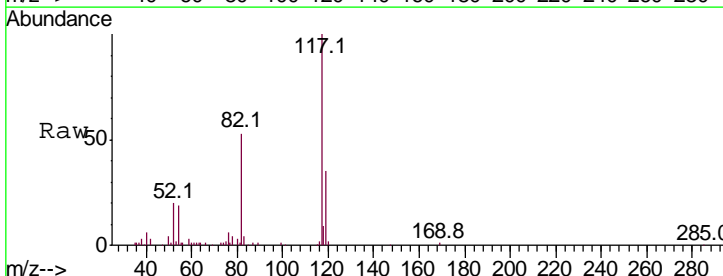
Instrument : MSVOA\_W  
 ClientSampled :

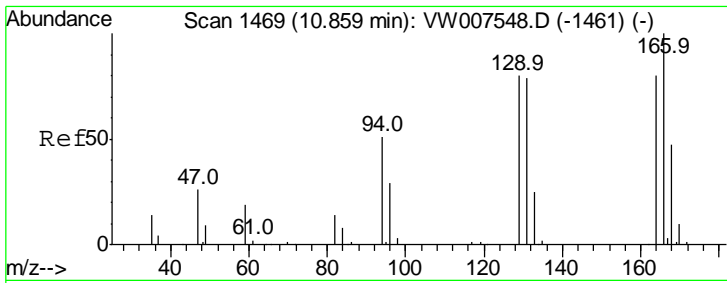
Tgt Ion	Resp	Lower	Upper
95	15425		
174	74.4	0.0	147.2
176	75.6	0.0	138.8



#63  
 Chlorobenzene-d5  
 Concen: 50.000 ug/l  
 RT: 11.63 min Scan# 1596  
 Delta R.T. 0.00 min  
 Lab File: VW007663.D  
 Acq: 18 Dec 2018 17:19

Tgt Ion	Resp	Lower	Upper
117	35712		
82	52.7	42.3	63.5
119	34.1	23.0	34.6



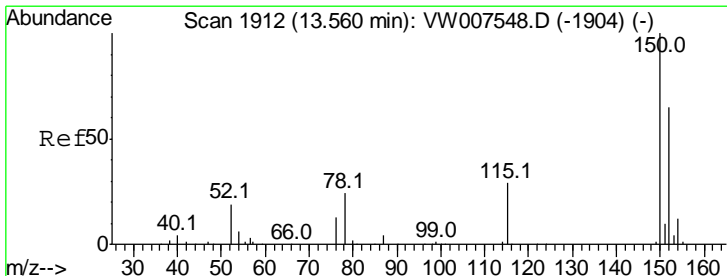
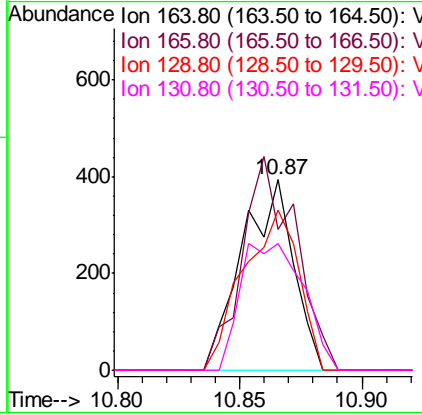
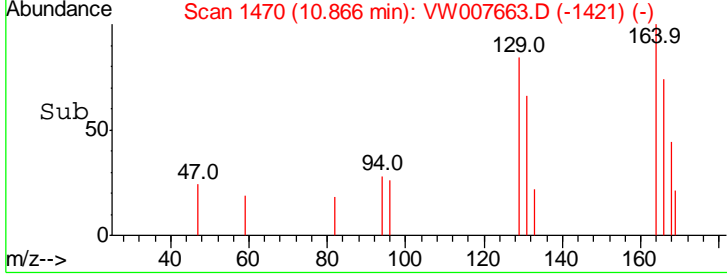
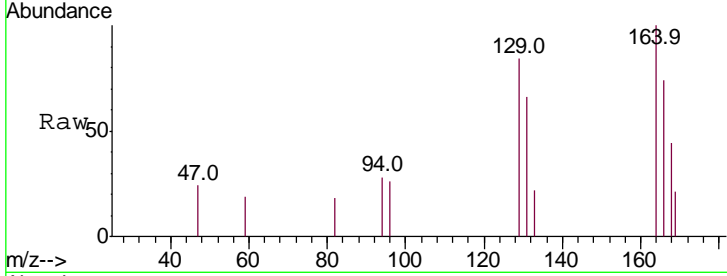


#64  
 Tetrachloroethene  
 Concen: 2.255 ug/l  
 RT: 10.87 min Scan# 1470  
 Delta R.T. 0.00 min  
 Lab File: VW007663.D  
 Acq: 18 Dec 2018 17:19

Instrument :  
 MSVOA\_W  
 ClientSampled :

Tot Ion:164 Resp: 579

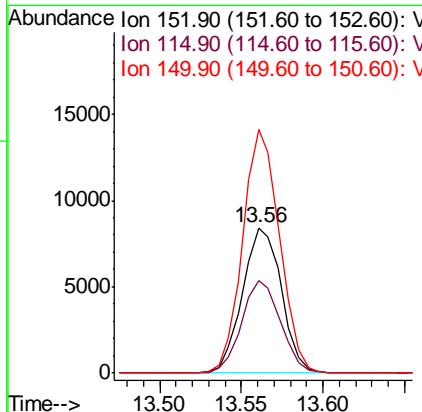
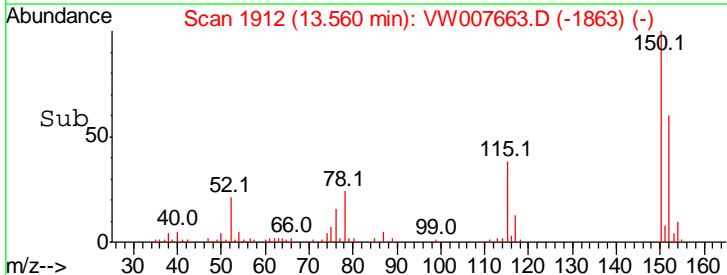
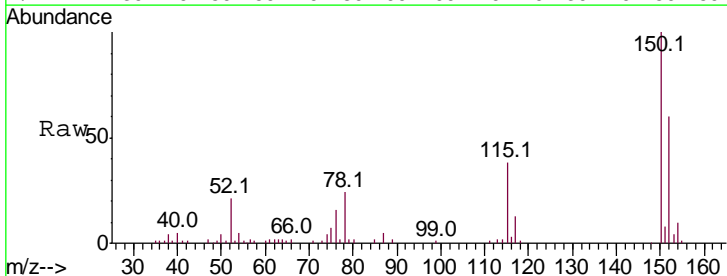
Ion	Ratio	Lower	Upper
164	100		
166	73.6	107.9	161.9#
129	83.8	73.4	110.2
131	66.5	75.8	113.6#

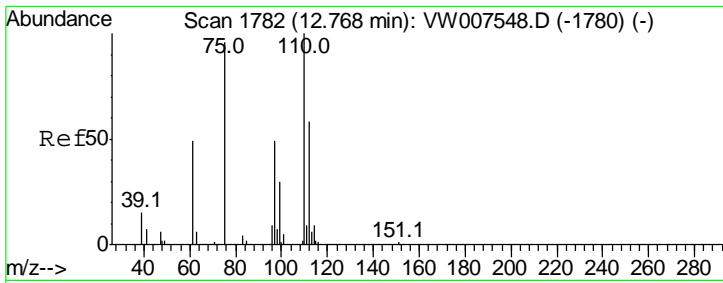


#72  
 1,4-Dichlorobenzene-d4  
 Concen: 50.000 ug/l  
 RT: 13.56 min Scan# 1912  
 Delta R.T. 0.00 min  
 Lab File: VW007663.D  
 Acq: 18 Dec 2018 17:19

Tgt Ion:152 Resp: 13955

Ion	Ratio	Lower	Upper
152	100		
115	63.4	31.4	94.2
150	159.3	0.0	358.4

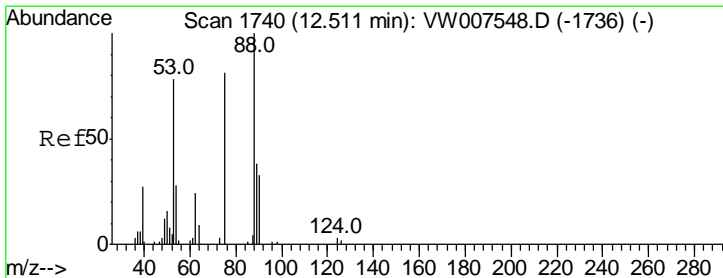
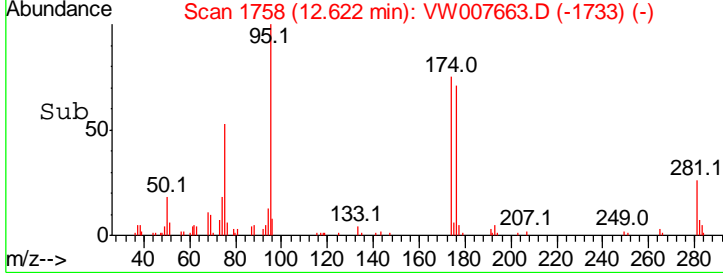
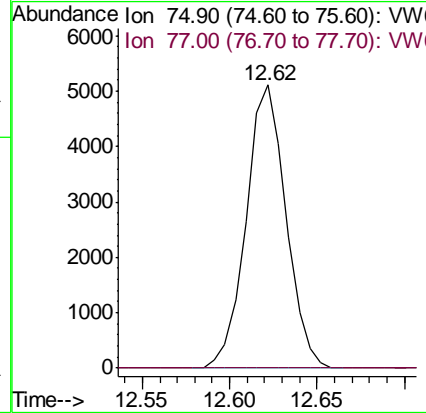
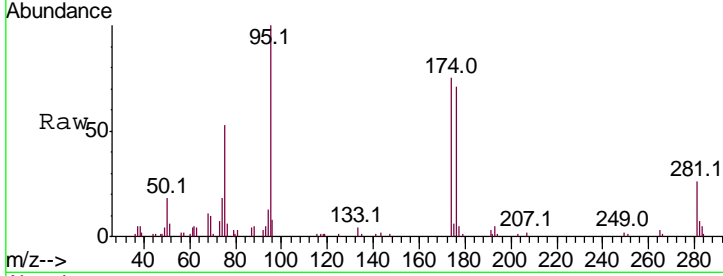




#76  
 1,2,3-Trichloropropane  
 Concen: 70.023 ug/l  
 RT: 12.62 min Scan# 1758  
 Delta R.T. -0.15 min  
 Lab File: VW007663.D  
 Acq: 18 Dec 2018 17:19

Instrument :  
 MSVOA\_W  
 ClientSampled :

Tgt Ion: 75 Resp: 8057  
 Ion Ratio Lower Upper  
 75 100  
 77 0.0 166.9 500.8#



#81  
 trans-1,4-Dichloro-2-butene  
 Concen: 154.680 ug/l  
 RT: 12.62 min Scan# 1758  
 Delta R.T. 0.10 min  
 Lab File: VW007663.D  
 Acq: 18 Dec 2018 17:19

Tgt Ion: 75 Resp: 8057  
 Ion Ratio Lower Upper  
 75 100  
 53 0.0 84.9 127.3#  
 89 0.0 40.3 60.5#

