

Data Path : Z:\VOASRV\HPCHEM1\MSVOA W\DATA\VW122018\
 Data File : VW007682.D
 Acq On : 19 Dec 2018 03:41
 Operator : SY/AP
 Sample : J6386-05
 Misc : 5.16G/5ML/MSVOA W/SOIL
 ALS Vial : 41 Sample Multiplier: 1

Instrument :
 MSVOA_W
 ClientSampleId :

Quant Time: Dec 19 06:02:04 2018
 Quant Method : Z:\VOASRV\HPCHEM1\MSVOA_W\METHOD\82W121118S.M
 Quant Title : SW846 8260
 QLast Update : Tue Dec 11 02:58:16 2018
 Response via : Initial Calibration

Internal Standards	R.T.	QIon	Response	Conc	Units	Dev(Min)
1) Pentafluorobenzene	7.95	168	2216	50.00	ug/l	0.00
34) 1,4-Difluorobenzene	8.84	114	6299	50.00	ug/l	0.00
63) Chlorobenzene-d5	11.63	117	5971	50.00	ug/l	0.00
72) 1,4-Dichlorobenzene-d4	13.56	152	1652	50.00	ug/l	0.00

System Monitoring Compounds

33) 1,2-Dichloroethane-d4	8.31	65	6064	246.66	ug/l	0.00
Spiked Amount				50.000		
Recovery						= 493.32%
35) Dibromofluoromethane	7.88	113	2971	77.92	ug/l	0.00
Spiked Amount				50.000		
Recovery						= 155.84%
50) Toluene-d8	10.32	98	5626	39.35	ug/l	0.00
Spiked Amount				50.000		
Recovery						= 78.70%
62) 4-Bromofluorobenzene	12.62	95	2233	42.48	ug/l	0.00
Spiked Amount				50.000		
Recovery						= 84.96%

Target Compounds

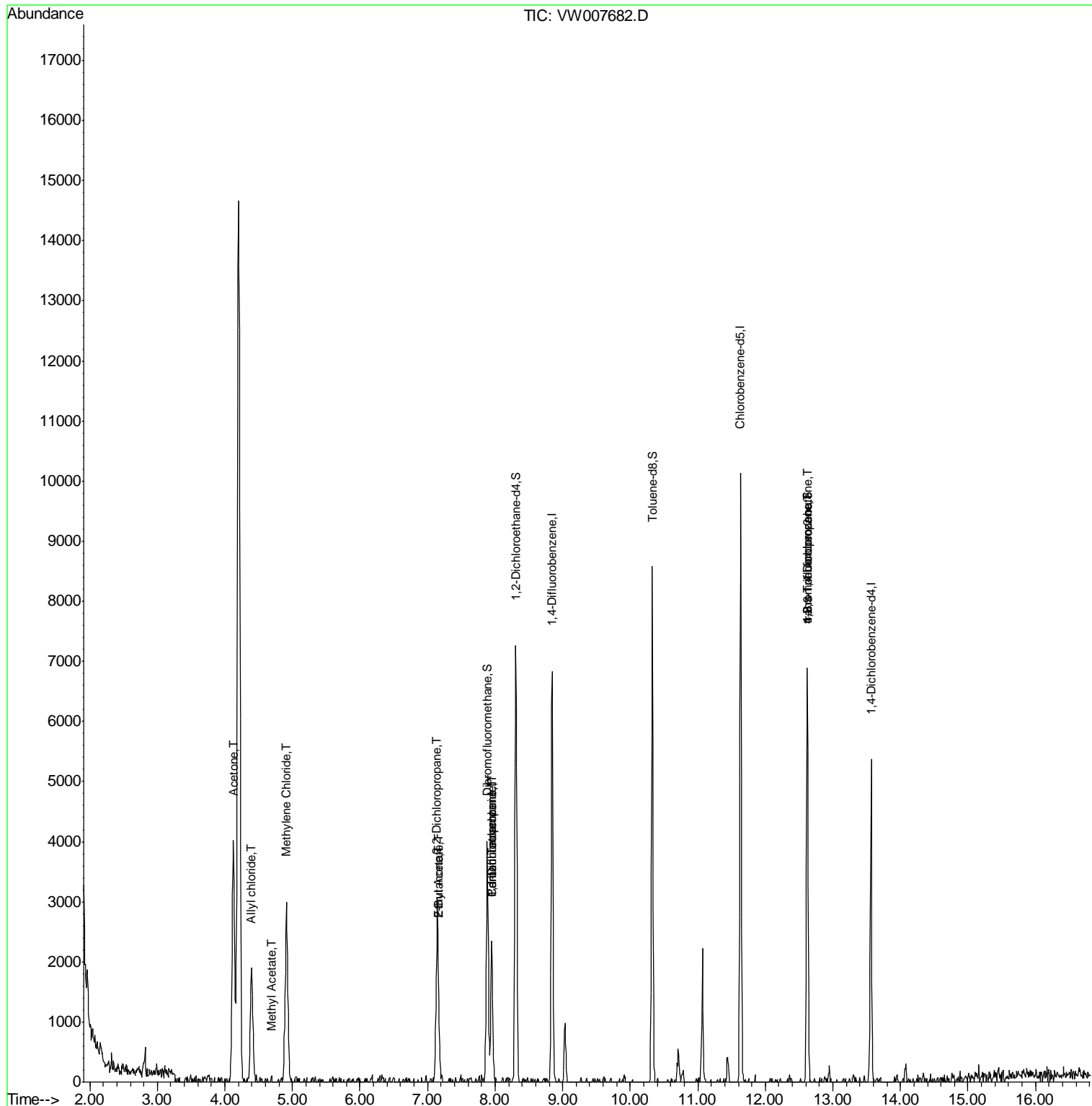
	R.T.	QIon	Response	Conc	Units	Qvalue
14) Allyl chloride	4.40	41	221	6.897	ug/l #	47
16) Acetone	4.13	43	6745	1570.714	ug/l	93
18) Methyl Acetate	4.69	43	64	5.491	ug/l #	49
20) Methylene Chloride	4.91	84	2100	92.778	ug/l	88
25) 2-Butanone	7.17	43	80	14.270	ug/l #	45
26) 2,2-Dichloropropane	7.15	77	77	2.795	ug/l #	52
36) 1,1-Dichloropropene	7.95	75	90	1.566	ug/l #	40
37) Ethyl Acetate	7.17	43	80	3.743	ug/l #	66
38) Carbon Tetrachloride	7.95	117	166	2.655	ug/l #	13
76) 1,2,3-Trichloropropane	12.62	75	1230	90.300	ug/l #	1
81) trans-1,4-Dichloro-2-buten	12.62	75	1230	199.474	ug/l #	7

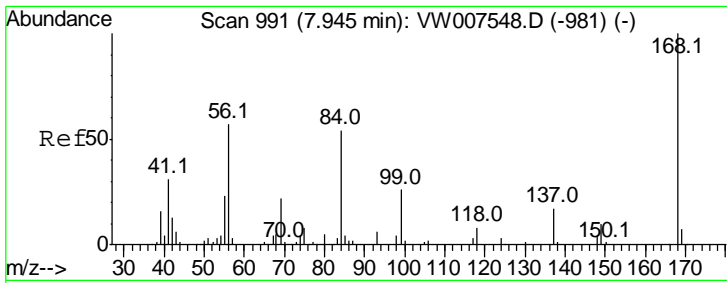
(#) = qualifier out of range (m) = manual integration (+) = signals summed

Data Path : Z:\VOASRV\HPCHEM1\MSVOA W\DATA\VW122018\
 Data File : VW007682.D
 Acq On : 19 Dec 2018 03:41
 Operator : SY/AP
 Sample : J6386-05
 Misc : 5.16G/5ML/MSVOA W/SOIL
 ALS Vial : 41 Sample Multiplier: 1

Instrument :
 MSVOA_W
 ClientSampled :

Quant Time: Dec 19 06:02:04 2018
 Quant Method : Z:\VOASRV\HPCHEM1\MSVOA_W\METHOD\82W121118S.M
 Quant Title : SW846 8260
 QLast Update : Tue Dec 11 02:58:16 2018
 Response via : Initial Calibration

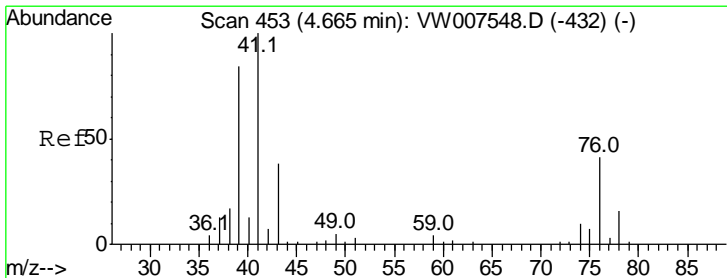
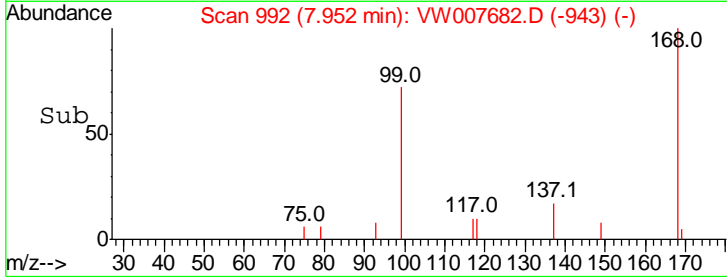
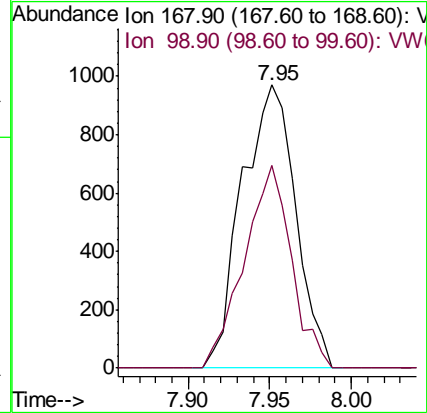
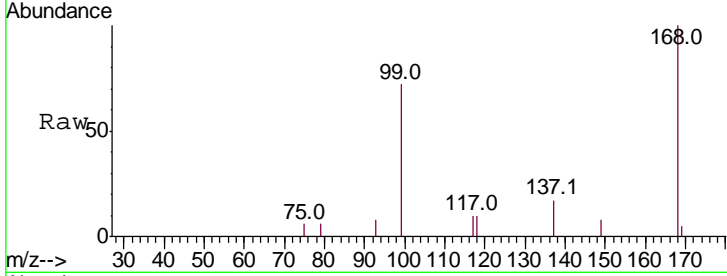




#1
 Pentafluorobenzene
 Concen: 50.000 ug/l
 RT: 7.95 min Scan# 992
 Delta R.T. 0.00 min
 Lab File: VW007682.D
 Acq: 19 Dec 2018 03:41

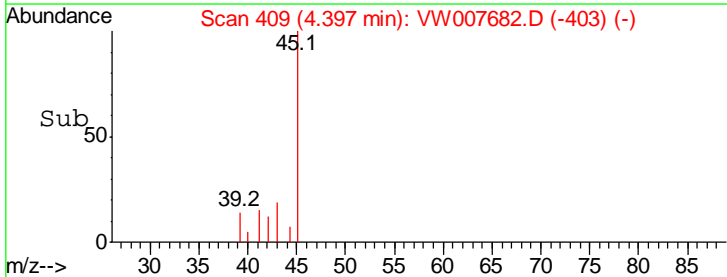
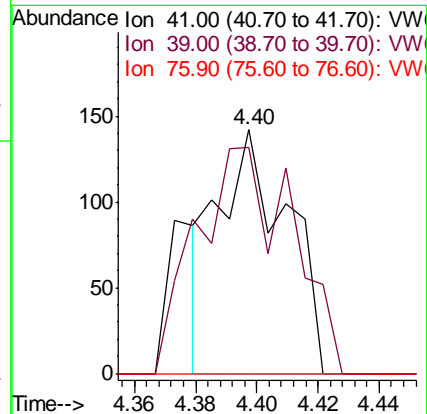
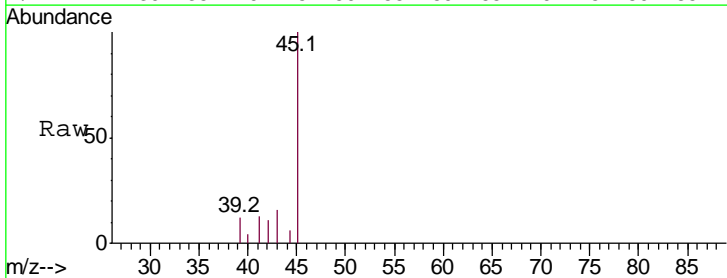
Instrument :
 MSVOA_W
 ClientSampled :

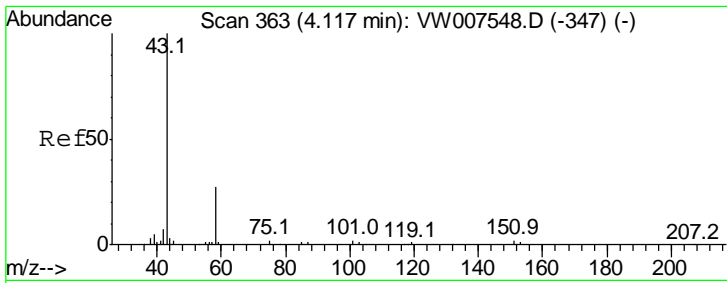
Tgt Ion	Ratio	Lower	Upper
168	100		
99	71.9	48.3	72.5



#14
 Allyl chloride
 Concen: 6.897 ug/l
 RT: 4.40 min Scan# 409
 Delta R.T. -0.26 min
 Lab File: VW007682.D
 Acq: 19 Dec 2018 03:41

Tgt Ion	Ratio	Lower	Upper
41	100		
39	120.4	63.4	95.2#
76	0.0	32.1	48.1#

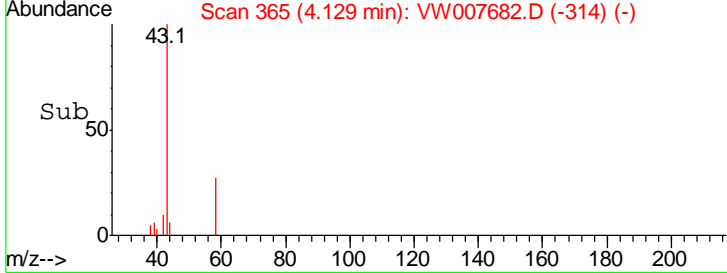
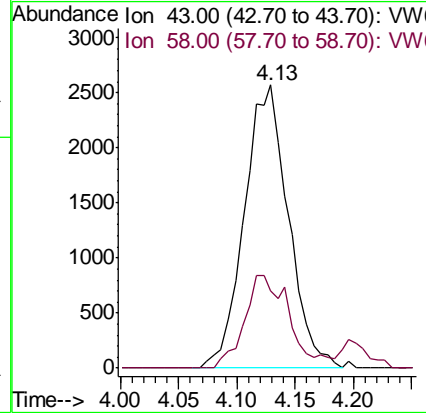
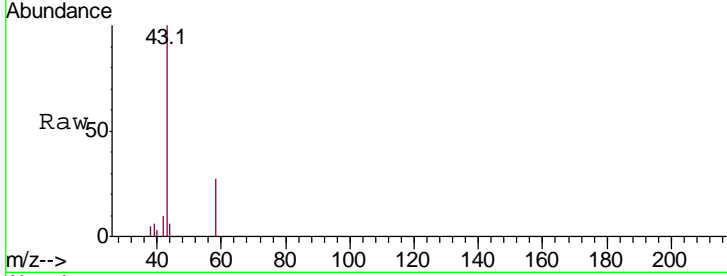




#16
 Acetone
 Concen: 1570.714 ug/l
 RT: 4.13 min Scan# 365
 Delta R.T. 0.01 min
 Lab File: VW007682.D
 Acq: 19 Dec 2018 03:41

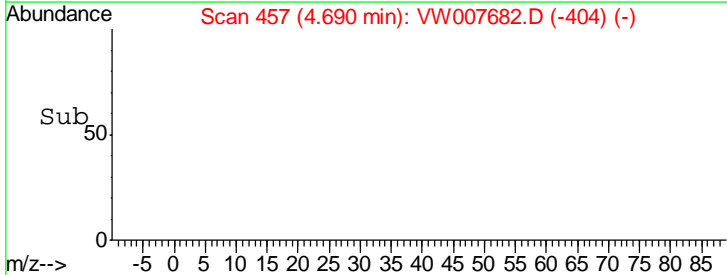
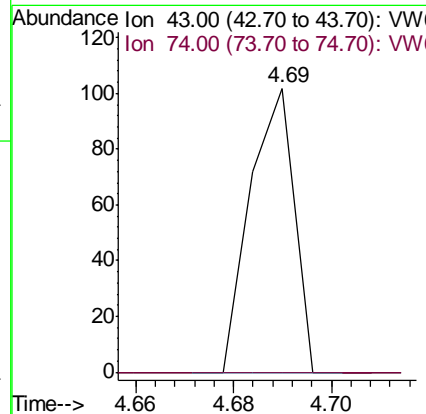
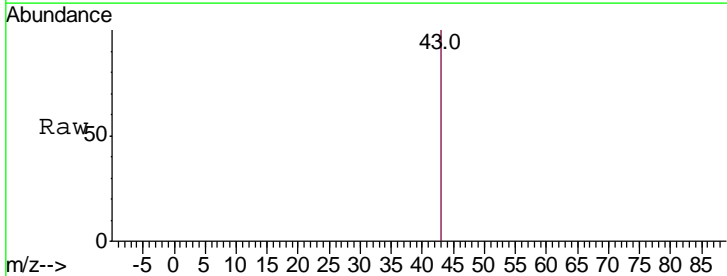
Instrument :
 MSVOA_W
 ClientSampled :

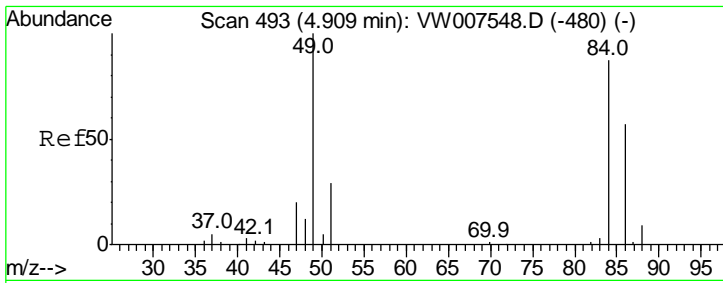
Tgt Ion	Resp	Lower	Upper
43	100		
58	27.1	24.9	37.3



#18
 Methyl Acetate
 Concen: 5.491 ug/l
 RT: 4.69 min Scan# 457
 Delta R.T. 0.02 min
 Lab File: VW007682.D
 Acq: 19 Dec 2018 03:41

Tgt Ion	Resp	Lower	Upper
43	100		
74	0.0	21.1	31.7#

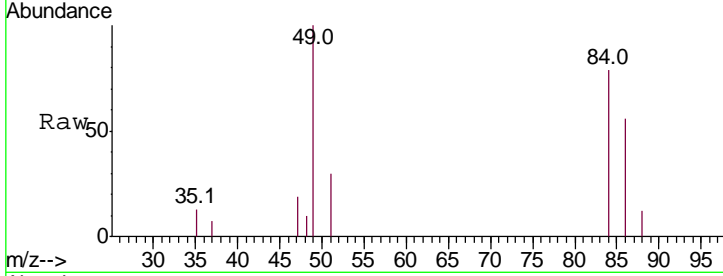




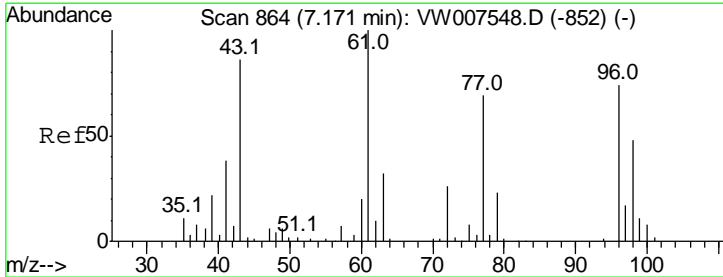
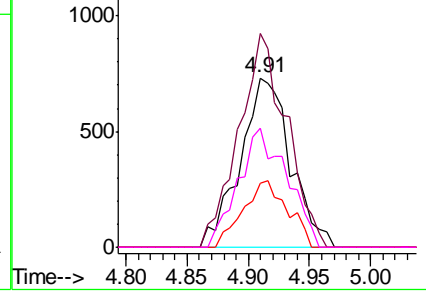
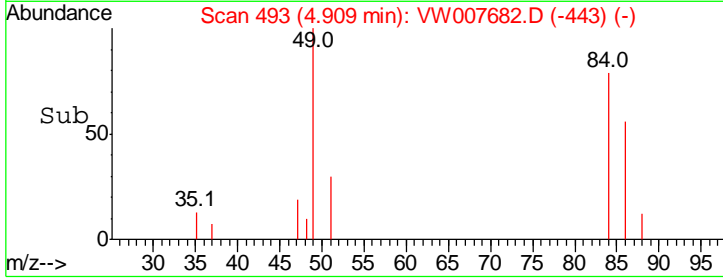
#20
 Methylene Chloride
 Concen: 92.778 ug/l
 RT: 4.91 min Scan# 493
 Delta R.T. 0.01 min
 Lab File: VW007682.D
 Acq: 19 Dec 2018 03:41

Instrument :
 MSVOA_W
 ClientSampled :

Tgt Ion	Resp	Lower	Upper
84	100		
49	126.1	87.1	130.7
51	37.7	28.2	42.2
86	70.4	50.8	76.2

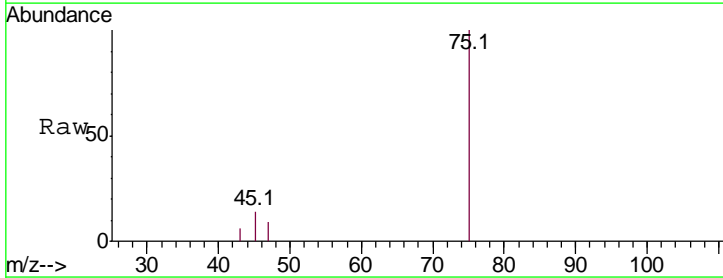


Abundance Ion 83.90 (83.60 to 84.60): VW
 Ion 48.90 (48.60 to 49.60): VW
 Ion 50.90 (50.60 to 51.60): VW
 Ion 85.90 (85.60 to 86.60): VW

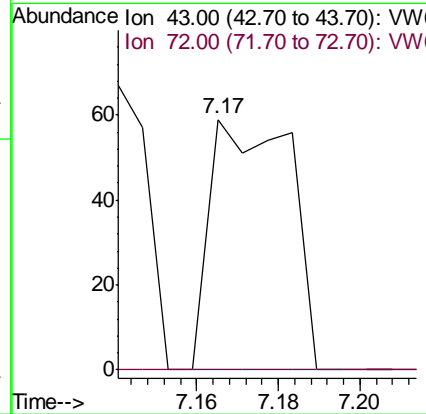
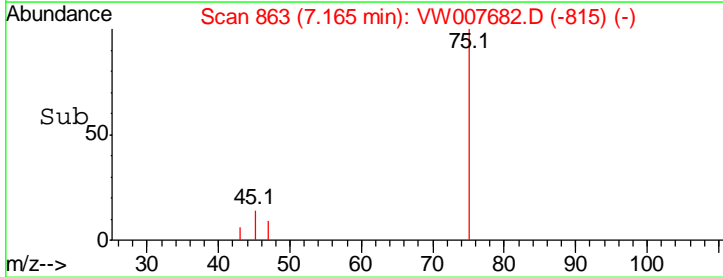


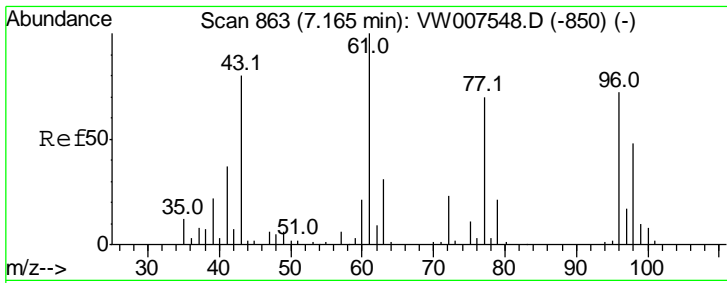
#25
 2-Butanone
 Concen: 14.270 ug/l
 RT: 7.17 min Scan# 863
 Delta R.T. -0.01 min
 Lab File: VW007682.D
 Acq: 19 Dec 2018 03:41

Tgt Ion	Resp	Lower	Upper
43	100		
72	0.0	23.4	35.2#



Abundance Ion 43.00 (42.70 to 43.70): VW
 Ion 72.00 (71.70 to 72.70): VW

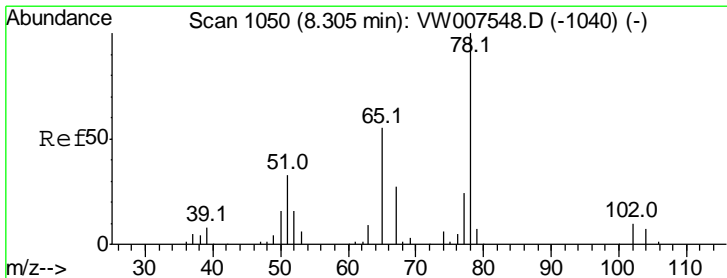
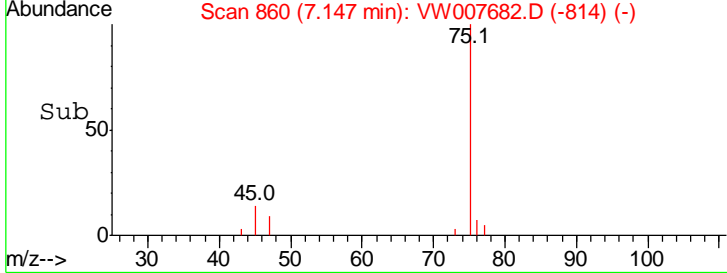
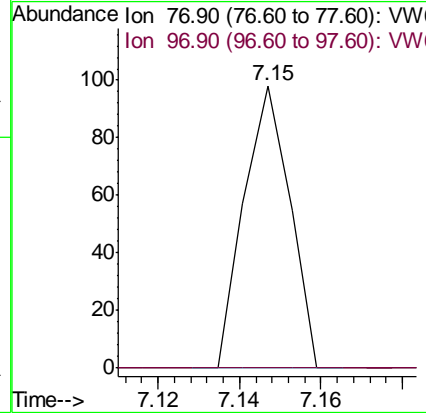
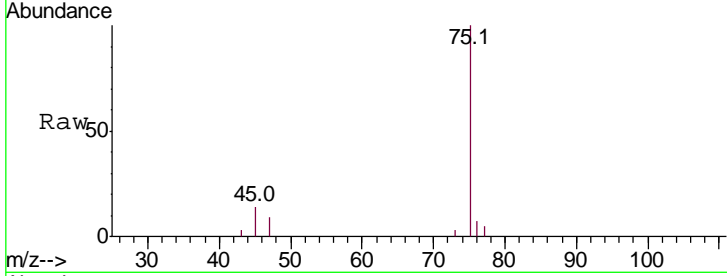




#26
 2,2-Dichloropropane
 Concen: 2.795 ug/l
 RT: 7.15 min Scan# 860
 Delta R.T. -0.02 min
 Lab File: VW007682.D
 Acq: 19 Dec 2018 03:41

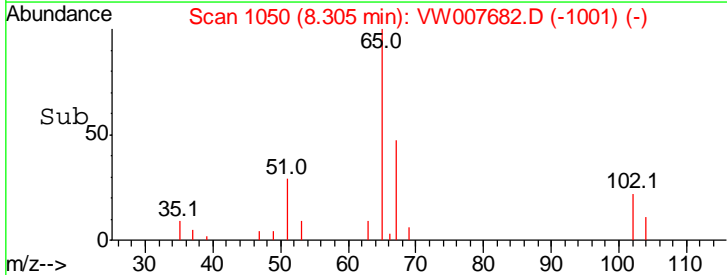
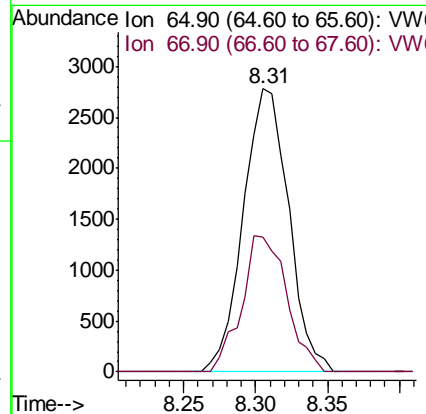
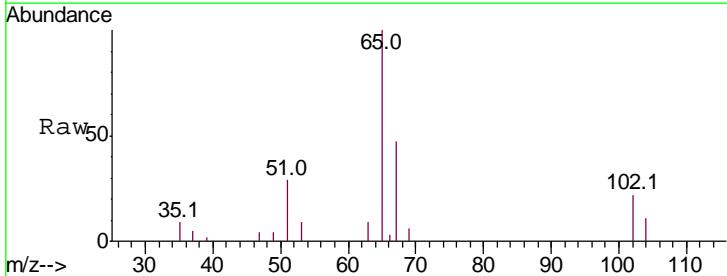
Instrument :
 MSVOA_W
 ClientSampled :

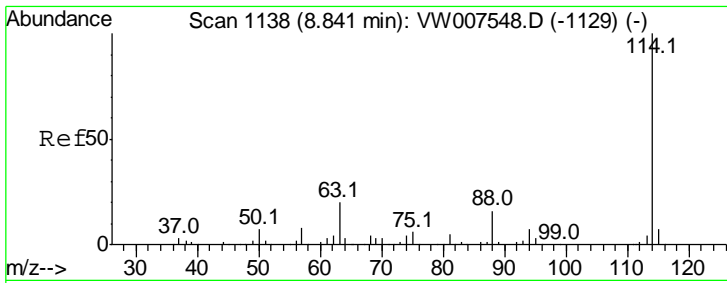
Tgt Ion	Resp	Lower	Upper
77	100		
97	0.0	11.6	34.8#



#33
 1,2-Dichloroethane-d4
 Concen: 246.657 ug/l
 RT: 8.31 min Scan# 1050
 Delta R.T. 0.00 min
 Lab File: VW007682.D
 Acq: 19 Dec 2018 03:41

Tgt Ion	Resp	Lower	Upper
65	100		
67	47.5	0.0	101.6

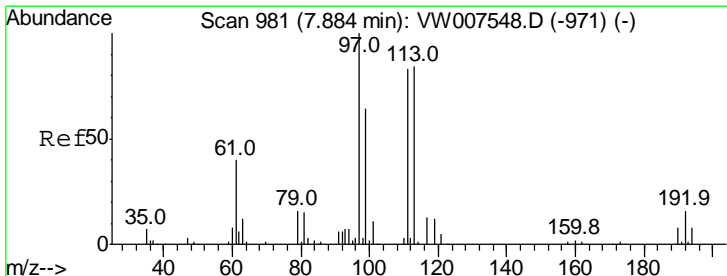
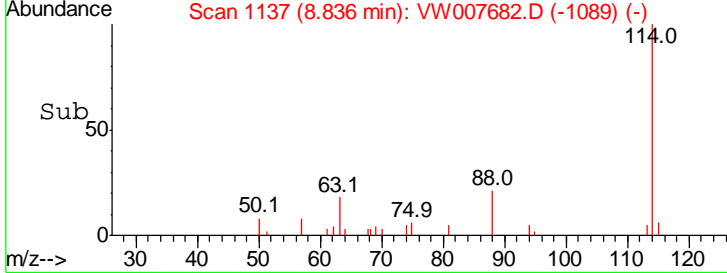
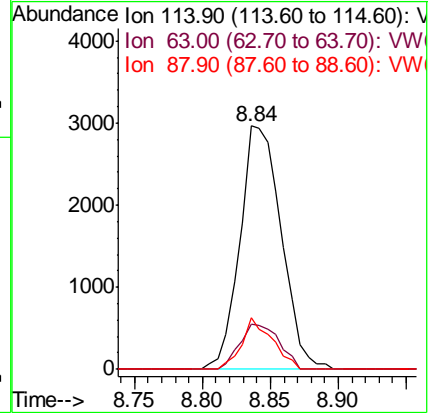
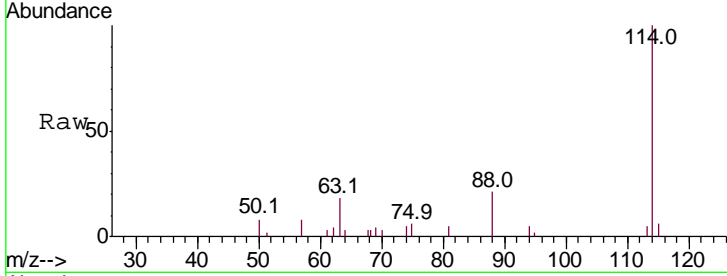




#34
 1,4-Difluorobenzene
 Concen: 50.000 ug/l
 RT: 8.84 min Scan# 1137
 Delta R.T. -0.01 min
 Lab File: VW007682.D
 Acq: 19 Dec 2018 03:41

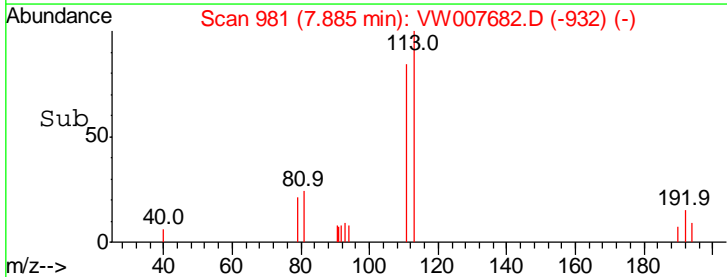
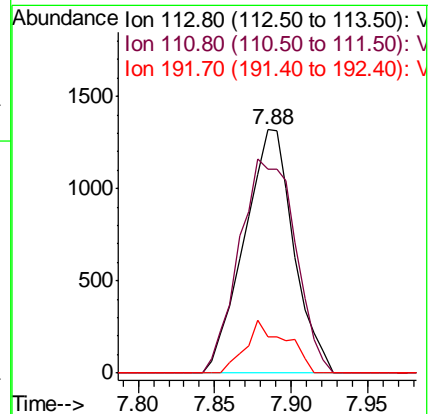
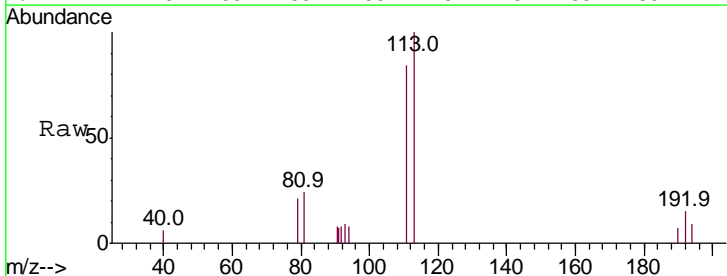
Instrument :
 MSVOA_W
 ClientSampled :

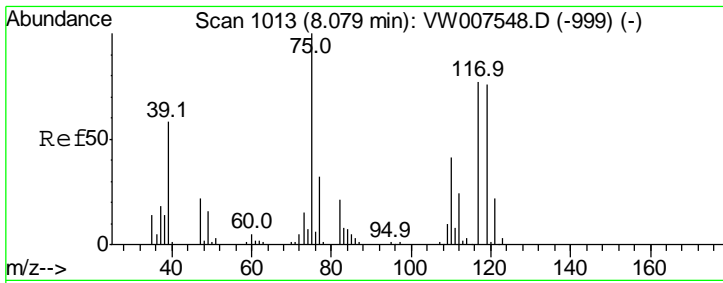
Tgt Ion	Resp	Lower	Upper
114	100		
63	18.4	0.0	39.6
88	21.2	0.0	31.4



#35
 Dibromofluoromethane
 Concen: 77.917 ug/l
 RT: 7.88 min Scan# 981
 Delta R.T. 0.00 min
 Lab File: VW007682.D
 Acq: 19 Dec 2018 03:41

Tgt Ion	Resp	Lower	Upper
113	100		
111	99.7	81.1	121.7
192	17.5	14.6	21.8

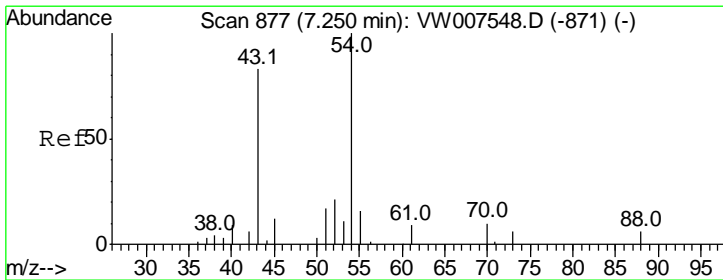
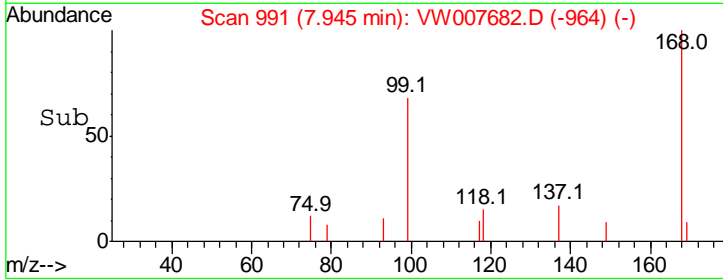
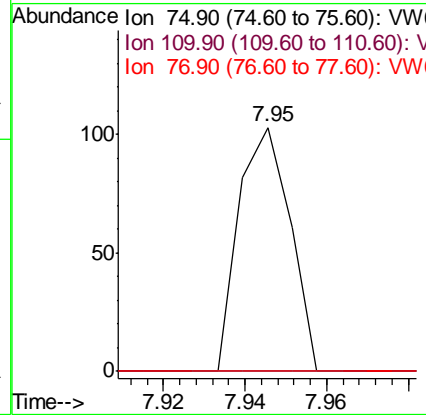
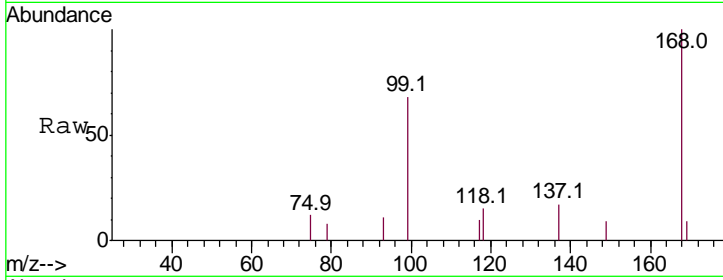




#36
 1,1-Dichloropropene
 Concen: 1.566 ug/l
 RT: 7.95 min Scan# 991
 Delta R.T. -0.13 min
 Lab File: VW007682.D
 Acq: 19 Dec 2018 03:41

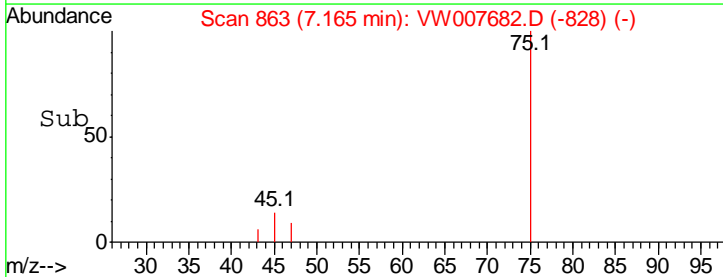
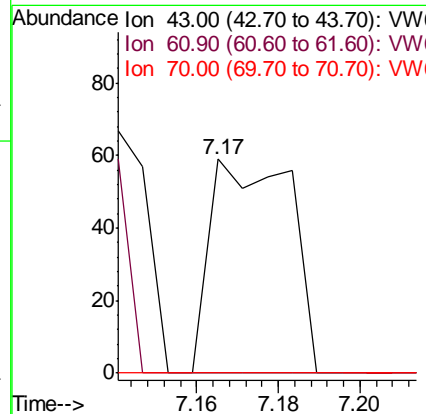
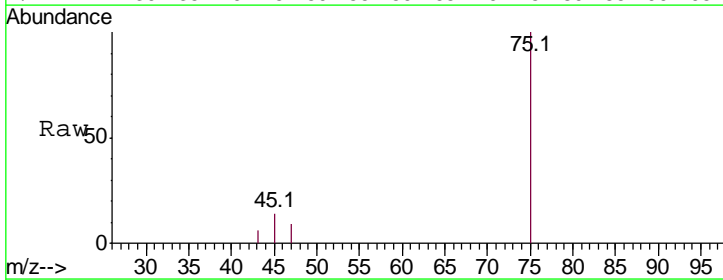
Instrument :
 MSVOA_W
 ClientSampled :

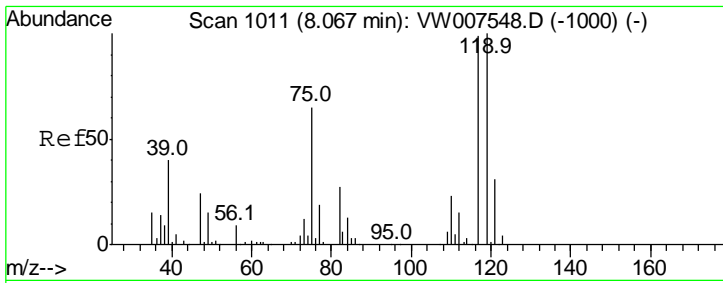
Tgt Ion	Resp	Lower	Upper
75	100		
110	0.0	18.5	55.5#
77	0.0	25.6	38.4#



#37
 Ethyl Acetate
 Concen: 3.743 ug/l
 RT: 7.17 min Scan# 863
 Delta R.T. -0.09 min
 Lab File: VW007682.D
 Acq: 19 Dec 2018 03:41

Tgt Ion	Resp	Lower	Upper
43	100		
61	0.0	12.1	18.1#
70	0.0	10.0	15.0#

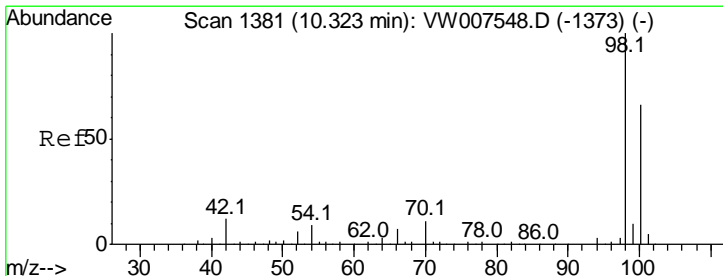
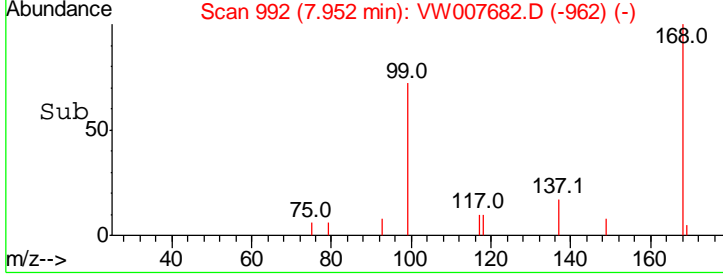
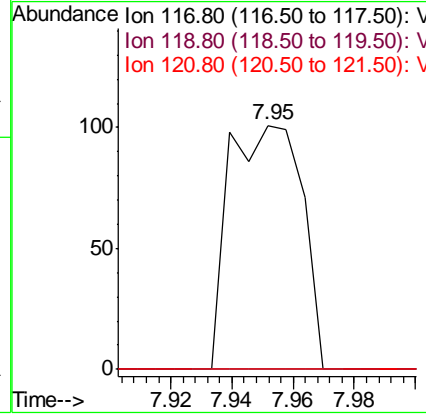
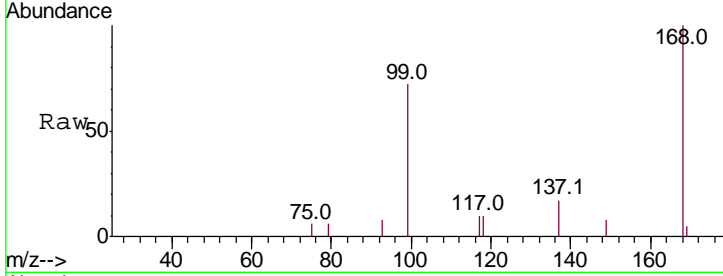




#38
 Carbon Tetrachloride
 Concen: 2.655 ug/l
 RT: 7.95 min Scan# 992
 Delta R.T. -0.12 min
 Lab File: VW007682.D
 Acq: 19 Dec 2018 03:41

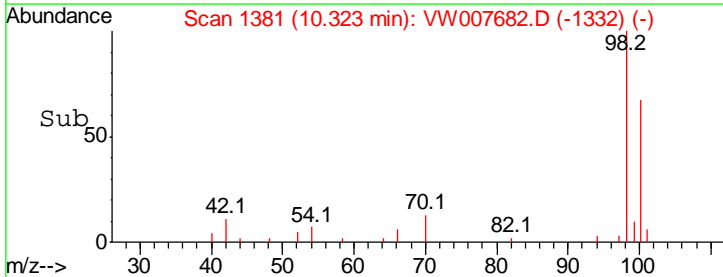
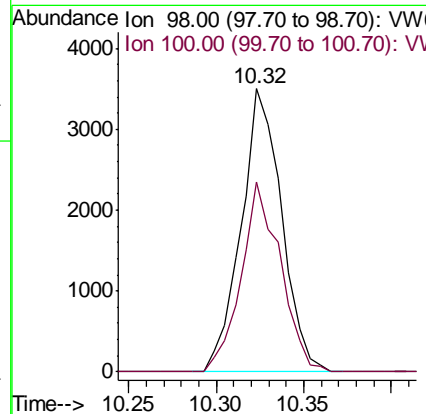
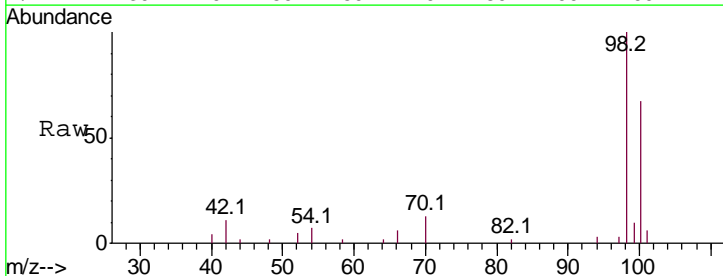
Instrument :
 MSVOA_W
 ClientSampled :

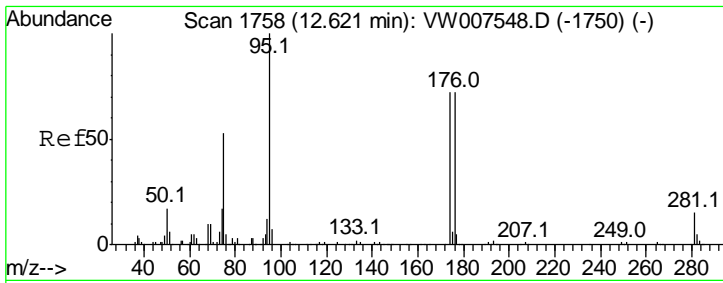
Tgt Ion	Resp	Lower	Upper
117	100		
119	0.0	74.3	111.5#
121	0.0	24.3	36.5#



#50
 Toluene-d8
 Concen: 39.352 ug/l
 RT: 10.32 min Scan# 1381
 Delta R.T. 0.00 min
 Lab File: VW007682.D
 Acq: 19 Dec 2018 03:41

Tgt Ion	Resp	Lower	Upper
98	100		
100	65.0	51.8	77.8

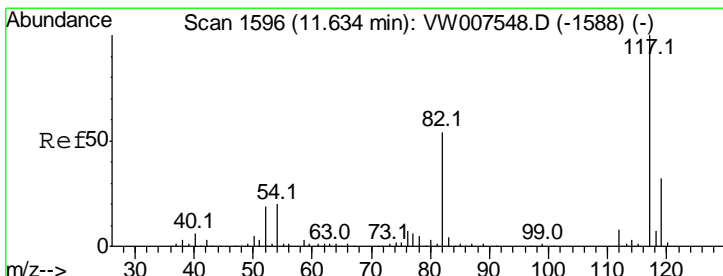
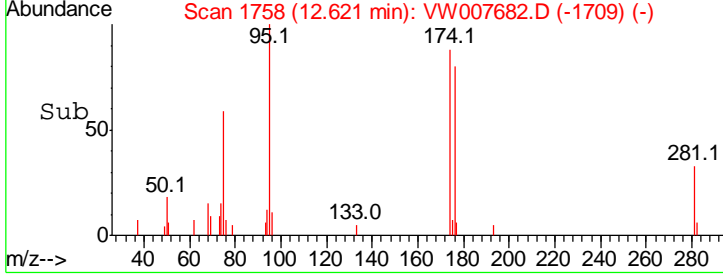
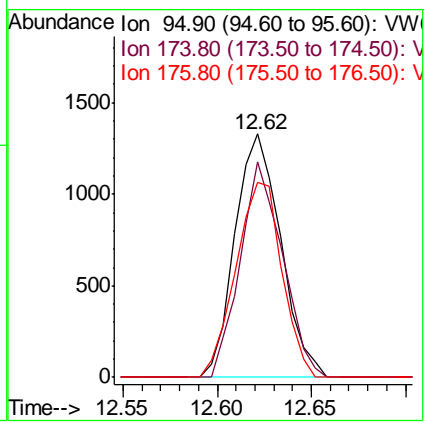
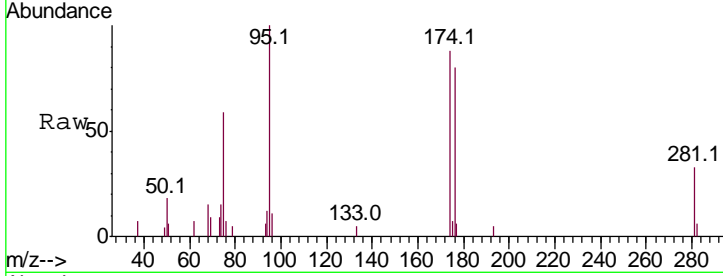




#62
 4-Bromofluorobenzene
 Concen: 42.480 ug/l
 RT: 12.62 min Scan# 1758
 Delta R.T. 0.00 min
 Lab File: VW007682.D
 Acq: 19 Dec 2018 03:41

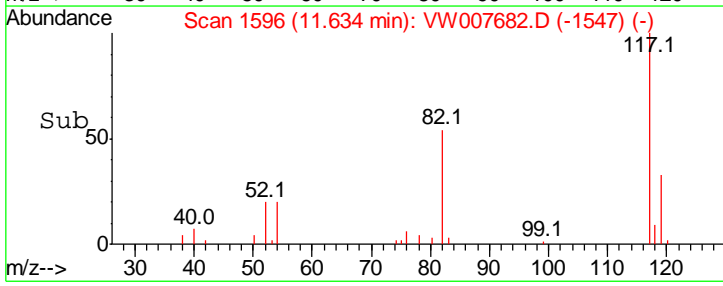
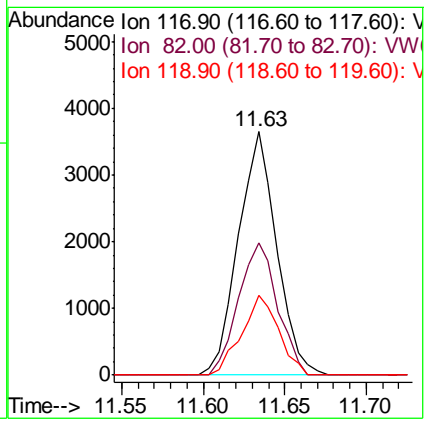
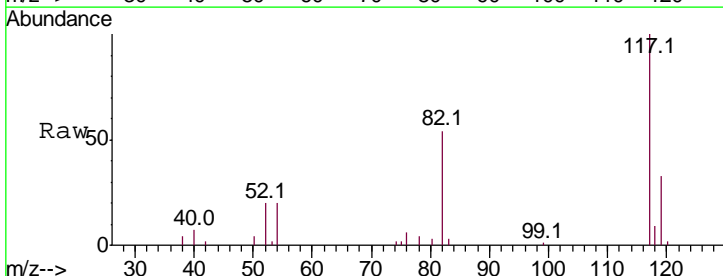
Instrument :
 MSVOA_W
 ClientSampled :

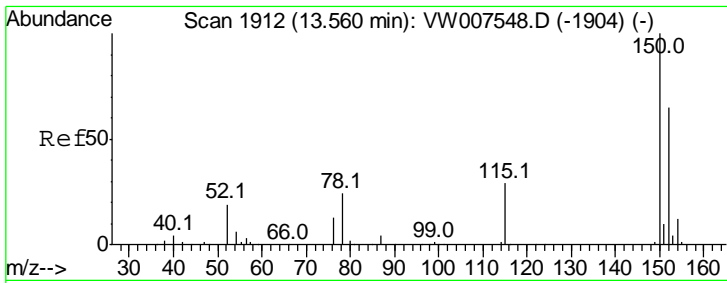
Tgt Ion	Resp	Lower	Upper
95	100		
174	82.0	0.0	147.2
176	80.9	0.0	138.8



#63
 Chlorobenzene-d5
 Concen: 50.000 ug/l
 RT: 11.63 min Scan# 1596
 Delta R.T. 0.00 min
 Lab File: VW007682.D
 Acq: 19 Dec 2018 03:41

Tgt Ion	Resp	Lower	Upper
117	100		
82	54.1	42.3	63.5
119	32.9	23.0	34.6



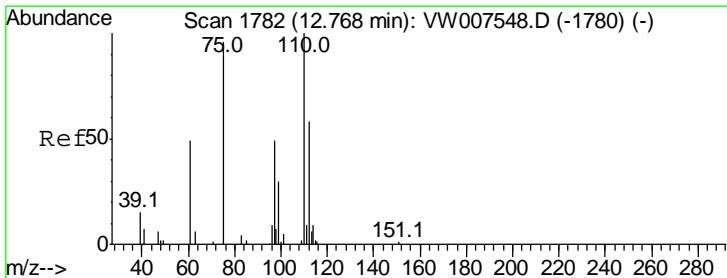
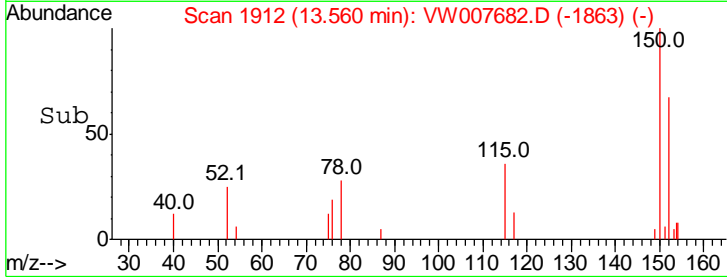
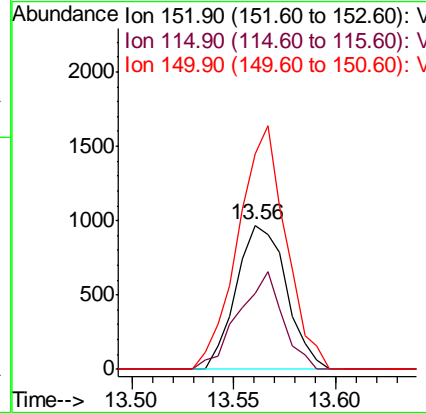
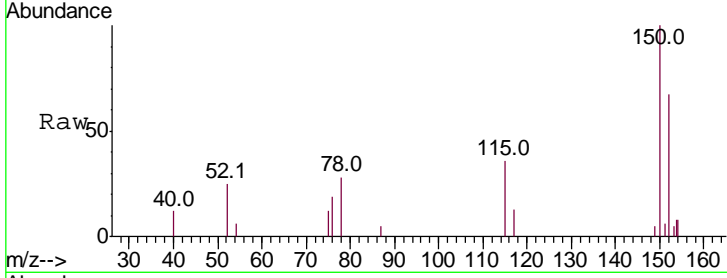


#72
 1,4-Dichlorobenzene-d4
 Concen: 50.000 ug/l
 RT: 13.56 min Scan# 1912
 Delta R.T. 0.00 min
 Lab File: VW007682.D
 Acq: 19 Dec 2018 03:41

Instrument :
 MSVOA_W
 ClientSampled :

Tot Ion:152 Resp: 1652

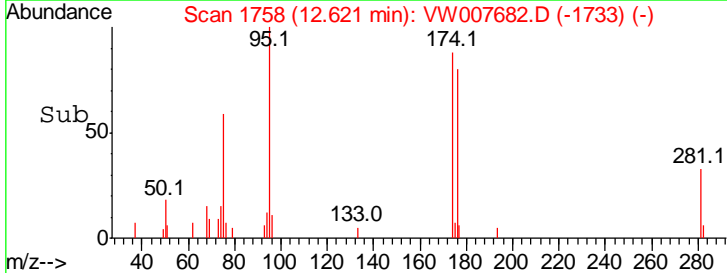
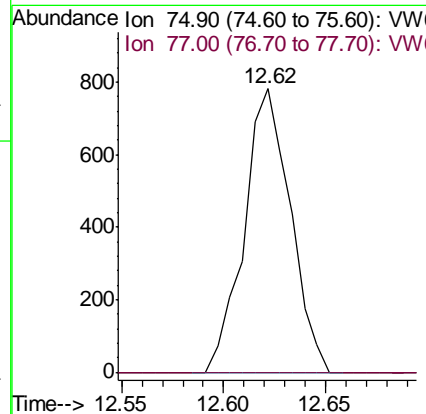
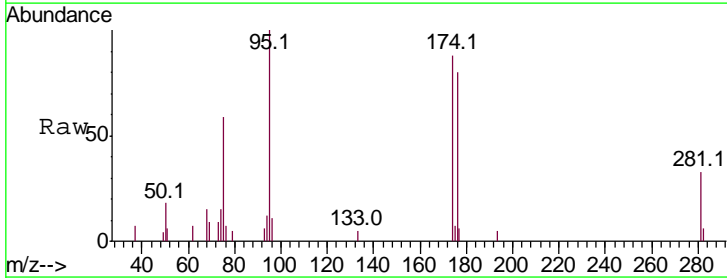
Ion	Ratio	Lower	Upper
152	100		
115	59.7	31.4	94.2
150	161.5	0.0	358.4

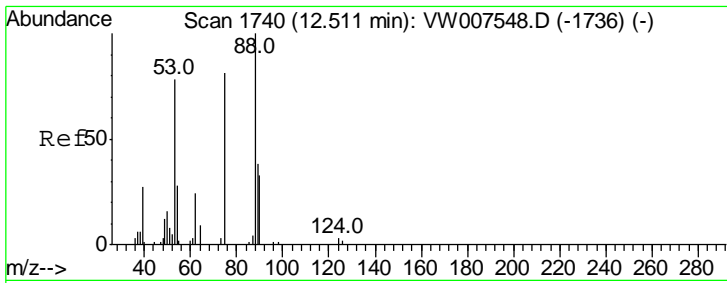


#76
 1,2,3-Trichloropropane
 Concen: 90.300 ug/l
 RT: 12.62 min Scan# 1758
 Delta R.T. -0.15 min
 Lab File: VW007682.D
 Acq: 19 Dec 2018 03:41

Tgt Ion: 75 Resp: 1230

Ion	Ratio	Lower	Upper
75	100		
77	0.0	166.9	500.8#



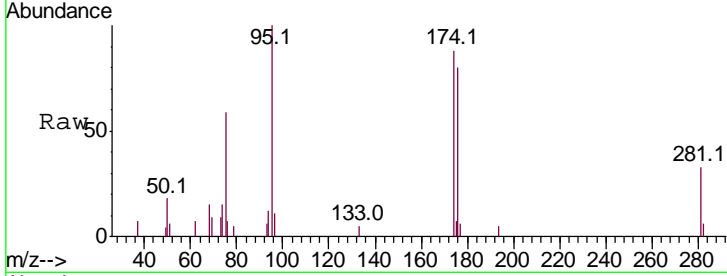


#81
 trans-1,4-Dichloro-2-butene
 Concen: 199.474 ug/l
 RT: 12.62 min Scan# 1758
 Delta R.T. 0.10 min
 Lab File: VW007682.D
 Acq: 19 Dec 2018 03:41

Instrument :
 MSVOA_W
 ClientSampled :

Tot Ion: 75 Resp: 1230

Ion	Ratio	Lower	Upper
75	100		
53	0.0	84.9	127.3#
89	0.0	40.3	60.5#



Abundance

Ion 74.90 (74.60 to 75.60): VW

Ion 53.00 (52.70 to 53.70): VW

Ion 88.90 (88.60 to 89.60): VW

