

Data Path : Z:\VOASRV\HPCHEM1\MSVOA_W\DATA\VW122318\
 Data File : VW007834.D
 Acq On : 22 Dec 2018 10:58
 Operator : SY/AP
 Sample : J6426-15
 Misc : 4.96G/5ML/MSVOA_W/SOIL
 ALS Vial : 45 Sample Multiplier: 1

Instrument :
 MSVOA_W
 ClientSampleId :
 P001-SS013C-1824-01

Quant Time: Dec 23 23:49:26 2018
 Quant Method : Z:\VOASRV\HPCHEM1\MSVOA_W\METHOD\82W122118S.M
 Quant Title : SW846 8260
 QLast Update : Thu Dec 20 06:30:23 2018
 Response via : Initial Calibration

Internal Standards	R.T.	QIon	Response	Conc	Units	Dev(Min)
1) Pentafluorobenzene	7.95	168	22783	50.00	ug/l	0.00
34) 1,4-Difluorobenzene	8.85	114	41066	50.00	ug/l	0.00
63) Chlorobenzene-d5	11.64	117	14938	50.00	ug/l	0.00
72) 1,4-Dichlorobenzene-d4	13.57	152	3785	50.00	ug/l	0.00

System Monitoring Compounds

33) 1,2-Dichloroethane-d4	8.31	65	20587	82.44	ug/l	0.00
Spiked Amount	50.000		Recovery	=	164.88%	
35) Dibromofluoromethane	7.89	113	15148	60.47	ug/l	0.00
Spiked Amount	50.000		Recovery	=	120.94%	
50) Toluene-d8	10.37	98	21598	22.87	ug/l	0.04
Spiked Amount	50.000		Recovery	=	45.74%	
62) 4-Bromofluorobenzene	12.63	95	5794	15.88	ug/l	0.00
Spiked Amount	50.000		Recovery	=	31.76%	

Target Compounds

						Qvalue
4) Vinyl Chloride	2.37	62	768	4.851	ug/l	92
11) Tert butyl alcohol	5.16	59	929	55.150	ug/l #	73
12) 1,1-Dichloroethene	4.04	96	2209	9.827	ug/l #	77
13) Acrolein	4.11	56	199	14.775	ug/l #	1
15) Acrylonitrile	5.44	53	37875	879.491	ug/l #	40
16) Acetone	4.12	43	82225	1758.412	ug/l	96
17) Carbon Disulfide	4.39	76	2256	3.243	ug/l #	75
18) Methyl Acetate	4.68	43	7222	64.942	ug/l	92
20) Methylene Chloride	4.92	84	5280	18.621	ug/l #	48
21) trans-1,2-Dichloroethene	5.42	96	1448	5.857	ug/l #	75
24) 1,1-Dichloroethane	6.21	63	7230	17.806	ug/l	96
25) 2-Butanone	7.18	43	23391	427.071	ug/l #	65
26) 2,2-Dichloropropane	7.13	77	1662	5.594	ug/l #	53
27) cis-1,2-Dichloroethene	7.17	96	634549	2409.214	ug/l	93
29) Tetrahydrofuran	7.54	42	429	13.131	ug/l #	55
30) Chloroform	7.63	83	677	1.473	ug/l #	17
31) Cyclohexane	7.96	56	161845	435.388	ug/l	93
32) 1,1,1-Trichloroethane	7.88	97	9030	21.577	ug/l	98
36) 1,1-Dichloropropene	7.96	75	2018	5.091	ug/l #	46
37) Ethyl Acetate	7.18	43	23391	171.000	ug/l #	1
38) Carbon Tetrachloride	7.96	117	2588	5.544	ug/l #	11
39) Methylcyclohexane	9.34	83	161601	328.110	ug/l	97
40) Benzene	8.33	78	379178	358.499	ug/l	98
41) Methacrylonitrile	7.49	41	199	2.562	ug/l #	17
42) 1,2-Dichloroethane	8.41	62	3572	10.078	ug/l #	77
43) Isopropyl Acetate	8.43	43	9109	33.238	ug/l #	49
44) Trichloroethene	9.10	130	2719	8.501	ug/l	91
45) 1,2-Dichloropropane	9.34	63	1840	7.840	ug/l #	1
48) Methyl methacrylate	9.52	41	3816	27.896	ug/l #	46
51) 4-Methyl-2-Pentanone	10.12	43	26026	200.948	ug/l #	40
52) Toluene	10.40	92	26582692	37459.765	ug/l #	1
53) t-1,3-Dichloropropene	10.40	75	231692	613.314	ug/l #	1
55) 1,1,2-Trichloroethane	10.77	97	8614	43.251	ug/l #	24
56) Ethyl methacrylate	10.63	69	1492	6.341	ug/l #	26

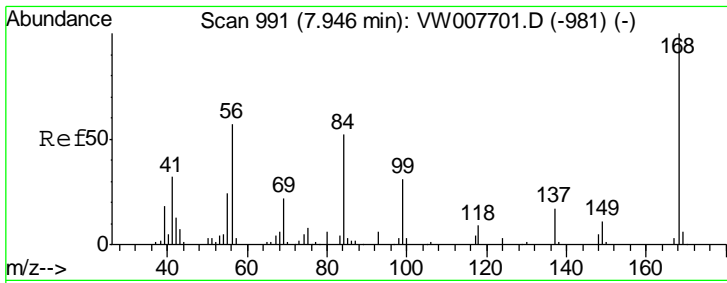
Data Path : Z:\VOASRV\HPCHEM1\MSVOA_W\DATA\VW122318\
 Data File : VW007834.D
 Acq On : 22 Dec 2018 10:58
 Operator : SY/AP
 Sample : J6426-15
 Misc : 4.96G/5ML/MSVOA_W/SOIL
 ALS Vial : 45 Sample Multiplier: 1

Instrument :
 MSVOA_W
 ClientSampleId :
 P001-SS013C-1824-01

Quant Time: Dec 23 23:49:26 2018
 Quant Method : Z:\VOASRV\HPCHEM1\MSVOA_W\METHOD\82W122118S.M
 Quant Title : SW846 8260
 QLast Update : Thu Dec 20 06:30:23 2018
 Response via : Initial Calibration

Internal Standards	R.T.	QIon	Response	Conc	Units	Dev(Min)
59) 2-Hexanone	11.12	43	944	10.364	ug/l	81
60) Dibromochloromethane	11.17	129	393	1.490	ug/l	90
64) Tetrachloroethene	10.87	164	10166	96.105	ug/l	98
65) Chlorobenzene	11.66	112	49488	153.061	ug/l	99
66) 1,1,1,2-Tetrachloroethane	11.69	131	361	3.125	ug/l #	1
67) Ethyl Benzene	11.74	91	13397700	24147.866	ug/l	98
68) m/p-Xylenes	11.86	106	19968088	92778.824	ug/l #	1
69) o-Xylene	12.18	106	7966761	39489.562	ug/l	90
70) Styrene	12.18	104	447298	1348.802	ug/l #	1
71) Bromoform	12.35	173	429	7.153	ug/l #	85
73) Isopropylbenzene	12.47	105	160709	561.716	ug/l	100
74) N-amyl acetate	12.26	43	9615	194.018	ug/l #	68
75) 1,1,2,2-Tetrachloroethane	12.71	83	7188	167.565	ug/l #	39
76) 1,2,3-Trichloropropane	12.80	75	1428	48.813	ug/l #	100
77) Bromobenzene	12.93	156	117500	1792.037	ug/l #	1
78) n-propylbenzene	12.81	91	198220	595.178	ug/l	99
79) 2-Chlorotoluene	12.87	91	71745	369.794	ug/l #	44
80) 1,3,5-Trimethylbenzene	12.95	105	306992	1243.965	ug/l	100
81) trans-1,4-Dichloro-2-buten	12.47	75	3471	249.052	ug/l #	60
82) 4-Chlorotoluene	12.94	91	31678	153.346	ug/l #	42
83) tert-Butylbenzene	13.21	119	6187	28.573	ug/l #	35
84) 1,2,4-Trimethylbenzene	13.26	105	858076	3445.812	ug/l	100
85) sec-Butylbenzene	13.26	105	858076	2875.355	ug/l #	56
86) p-Isopropyltoluene	13.51	119	64806	238.818	ug/l	99
87) 1,3-Dichlorobenzene	13.58	146	14631	112.387	ug/l	87
88) 1,4-Dichlorobenzene	13.58	146	14631	112.354	ug/l #	86
89) n-Butylbenzene	13.83	91	15129	60.807	ug/l #	54
90) Hexachloroethane	14.10	117	10924	229.301	ug/l #	13
91) 1,2-Dichlorobenzene	13.88	146	15012	128.793	ug/l #	82
92) 1,2-Dibromo-3-Chloropropan	14.51	75	224	25.427	ug/l #	42
93) 1,2,4-Trichlorobenzene	15.14	180	69472	858.643	ug/l #	87
94) Hexachlorobutadiene	15.51	225	168	3.885	ug/l #	1
95) Naphthalene	15.38	128	311623	2083.218	ug/l	100
96) 1,2,3-Trichlorobenzene	15.57	180	15880	229.286	ug/l #	45

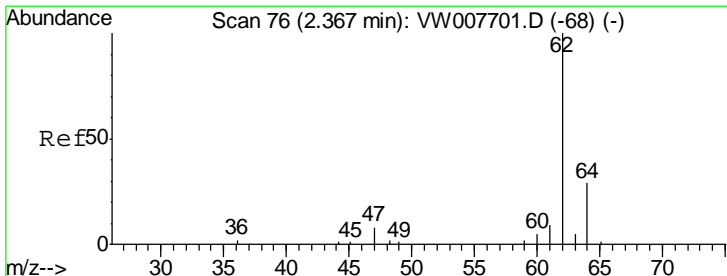
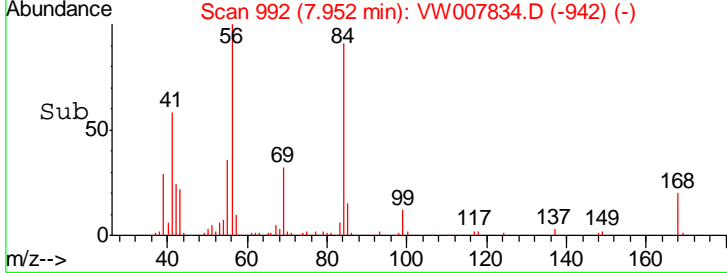
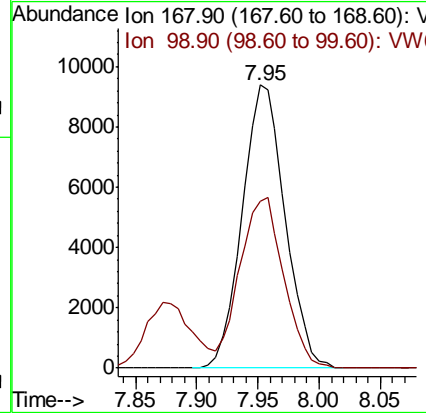
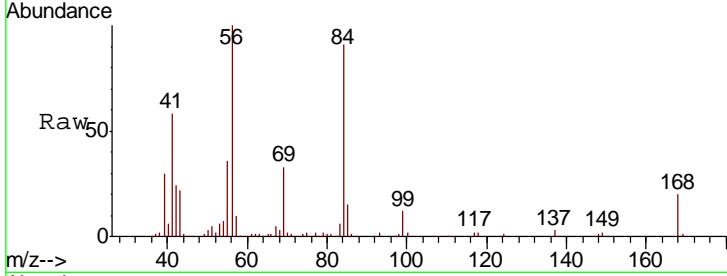
(#) = qualifier out of range (m) = manual integration (+) = signals summed



#1
 Pentafluorobenzene
 Concen: 50.000 ug/l
 RT: 7.95 min Scan# 992
 Delta R.T. 0.01 min
 Lab File: VW007834.D
 Acq: 22 Dec 2018 10:58

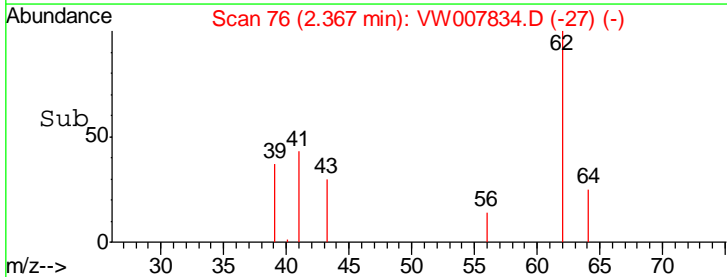
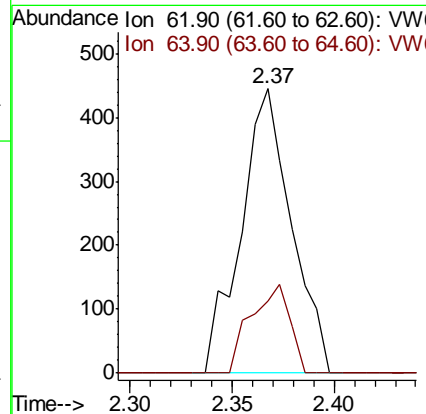
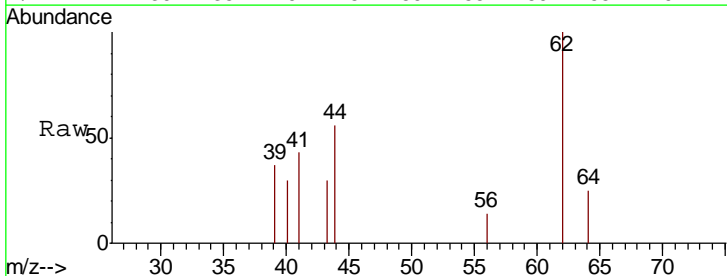
Instrument :
 MSVOA_W
ClientSampled :
 P001-SS013C-1824-01

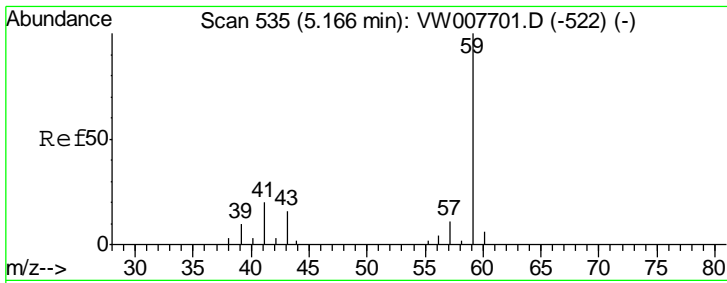
Tgt Ion: 168 Resp: 22783
 Ion Ratio Lower Upper
 168 100
 99 58.8 54.0 81.0



#4
 Vinyl Chloride
 Concen: 4.851 ug/l
 RT: 2.37 min Scan# 76
 Delta R.T. -0.00 min
 Lab File: VW007834.D
 Acq: 22 Dec 2018 10:58

Tgt Ion: 62 Resp: 768
 Ion Ratio Lower Upper
 62 100
 64 24.9 23.4 35.0

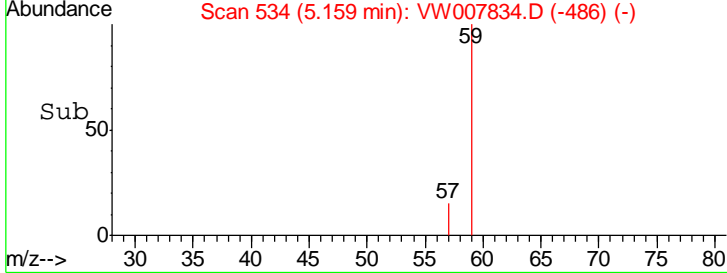
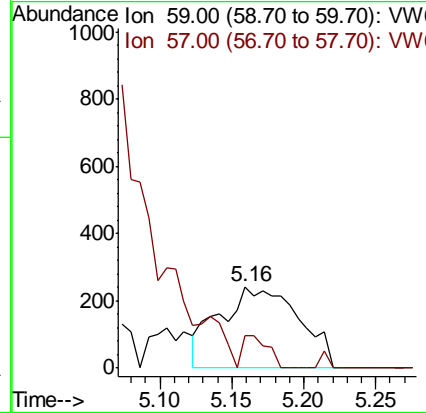
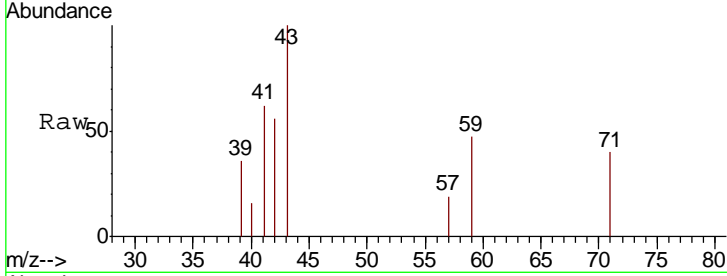




#11
 Tert butyl alcohol
 Concen: 55.150 ug/l
 RT: 5.16 min Scan# 534
 Delta R.T. -0.01 min
 Lab File: VW007834.D
 Acq: 22 Dec 2018 10:58

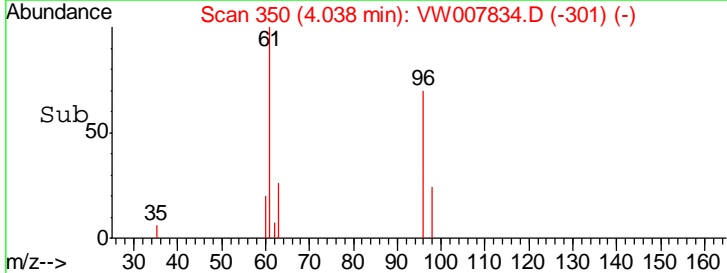
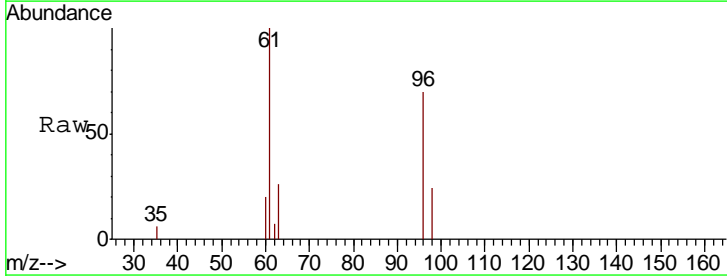
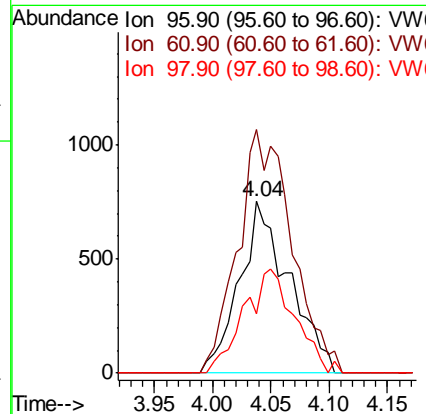
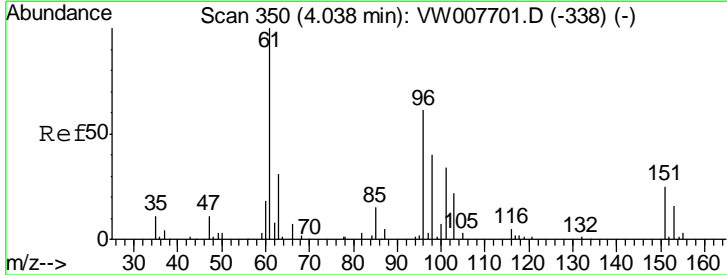
Instrument :
 MSVOA_W
 ClientSampleId :
 P001-SS013C-1824-01

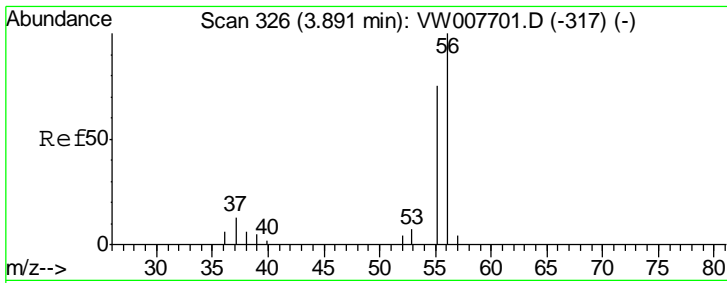
Tgt Ion	Resp	Lower	Upper
59	100		
57	0.0	7.8	11.8#



#12
 1,1-Dichloroethene
 Concen: 9.827 ug/l
 RT: 4.04 min Scan# 350
 Delta R.T. -0.00 min
 Lab File: VW007834.D
 Acq: 22 Dec 2018 10:58

Tgt Ion	Resp	Lower	Upper
96	100		
61	141.9	130.6	195.8
98	34.4	52.3	78.5#

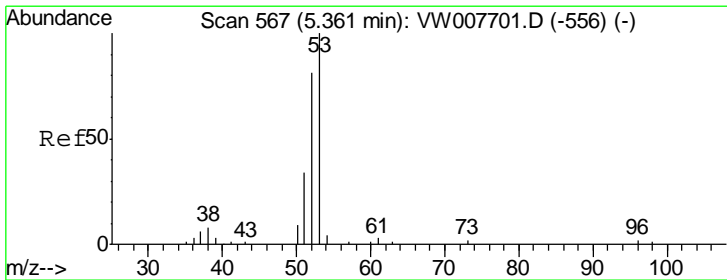
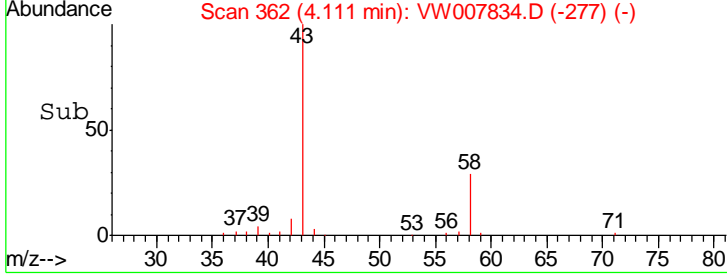
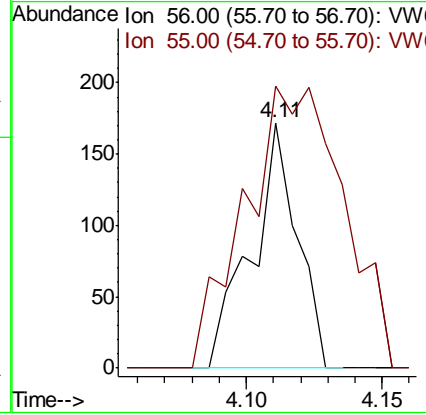
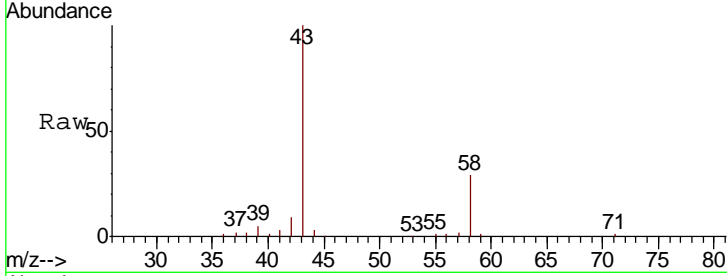




#13
 Acrolein
 Concen: 14.775 ug/l
 RT: 4.11 min Scan# 362
 Delta R.T. 0.22 min
 Lab File: VW007834.D
 Acq: 22 Dec 2018 10:58

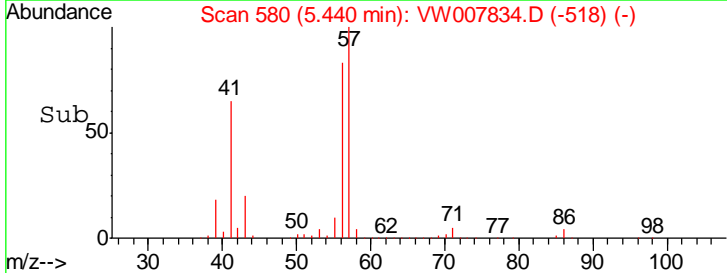
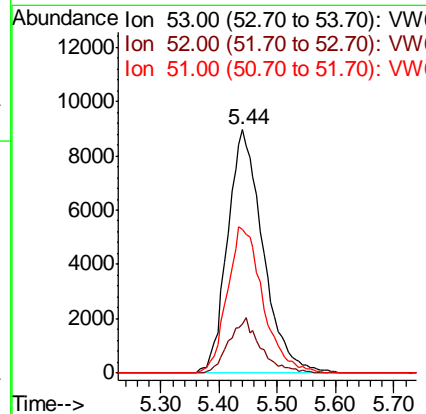
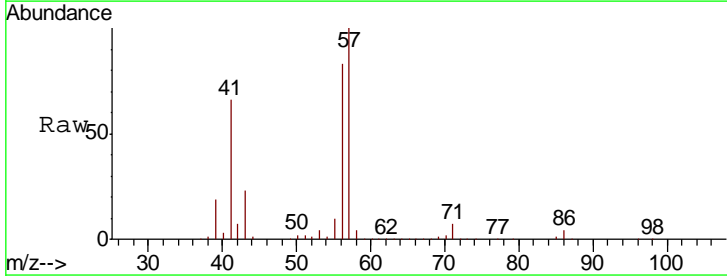
Instrument :
 MSVOA_W
 ClientSampleId :
 P001-SS013C-1824-01

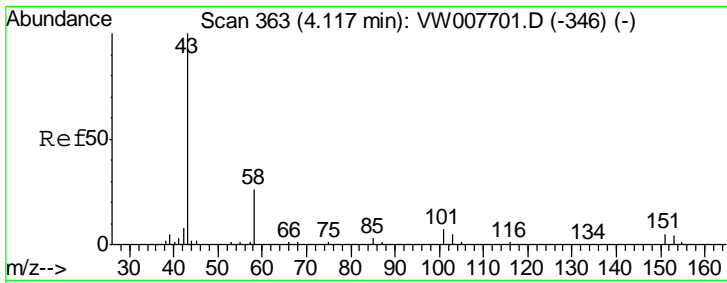
Tgt Ion: 56 Resp: 199
 Ion Ratio Lower Upper
 56 100
 55 248.7 57.7 86.5#



#15
 Acrylonitrile
 Concen: 879.491 ug/l
 RT: 5.44 min Scan# 580
 Delta R.T. 0.08 min
 Lab File: VW007834.D
 Acq: 22 Dec 2018 10:58

Tgt Ion: 53 Resp: 37875
 Ion Ratio Lower Upper
 53 100
 52 20.2 67.0 100.4#
 51 60.5 30.2 45.2#

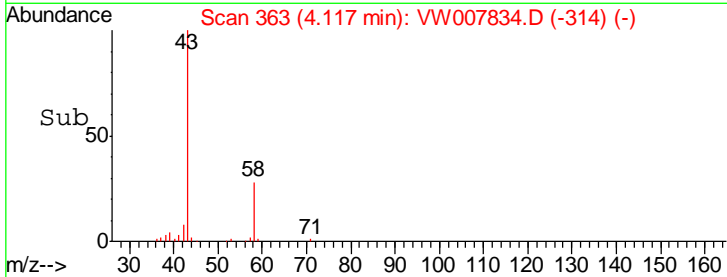
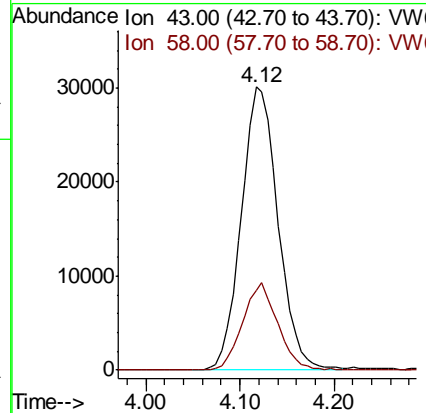
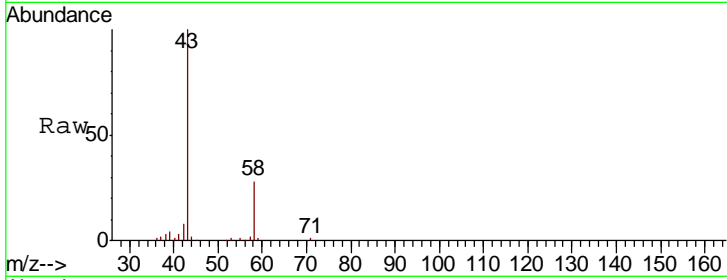




#16
 Acetone
 Concen: 1758.412 ug/l
 RT: 4.12 min Scan# 363
 Delta R.T. -0.00 min
 Lab File: VW007834.D
 Acq: 22 Dec 2018 10:58

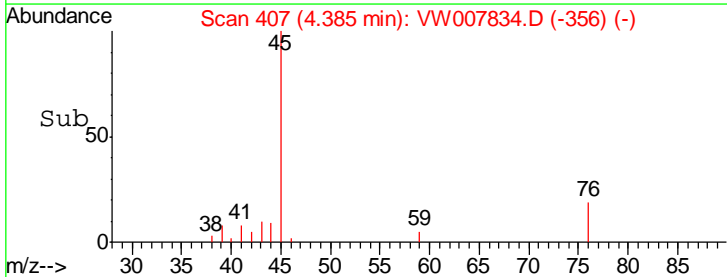
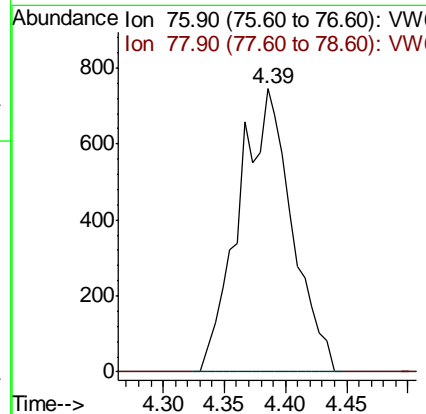
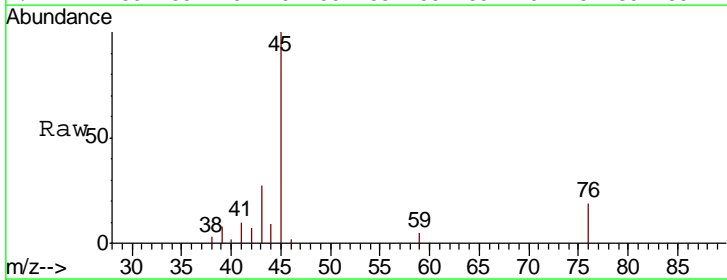
Instrument :
 MSVOA_W
ClientSampled :
 P001-SS013C-1824-01

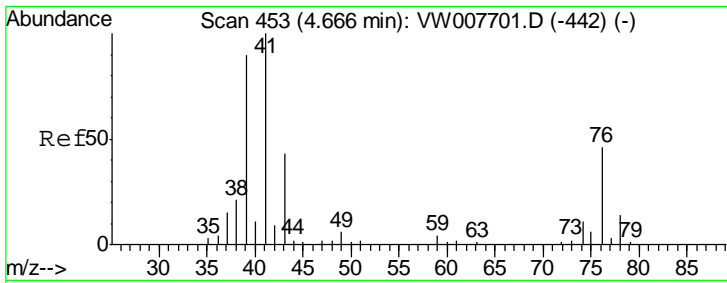
Tgt Ion	Resp	Lower	Upper
43	100		
58	28.4	21.2	31.8



#17
 Carbon Disulfide
 Concen: 3.243 ug/l
 RT: 4.39 min Scan# 407
 Delta R.T. 0.01 min
 Lab File: VW007834.D
 Acq: 22 Dec 2018 10:58

Tgt Ion	Resp	Lower	Upper
76	100		
78	0.0	7.3	10.9#

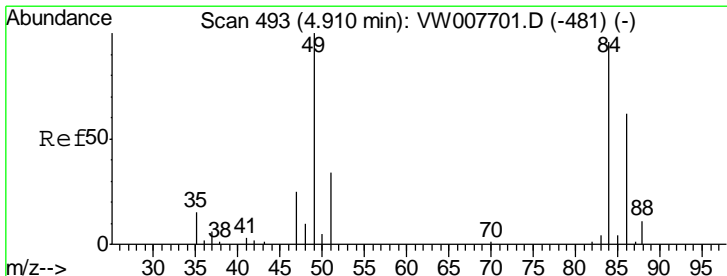
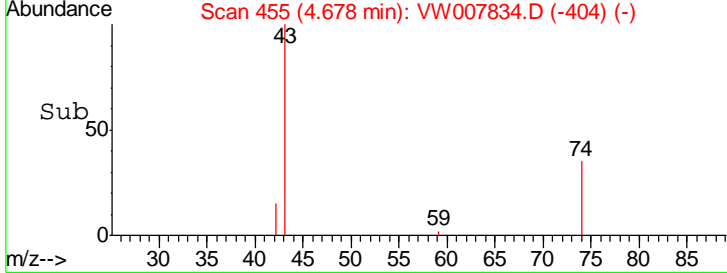
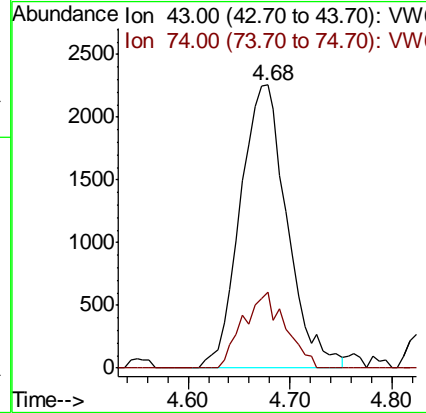
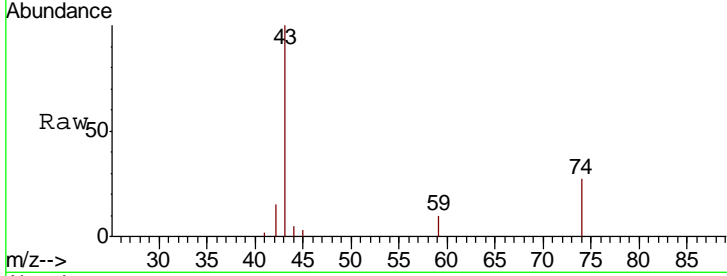




#18
 Methyl Acetate
 Concen: 64.942 ug/l
 RT: 4.68 min Scan# 455
 Delta R.T. 0.01 min
 Lab File: VW007834.D
 Acq: 22 Dec 2018 10:58

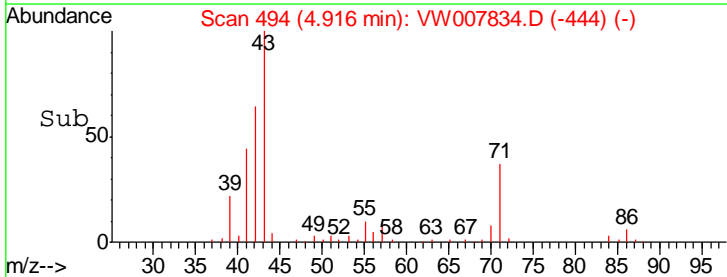
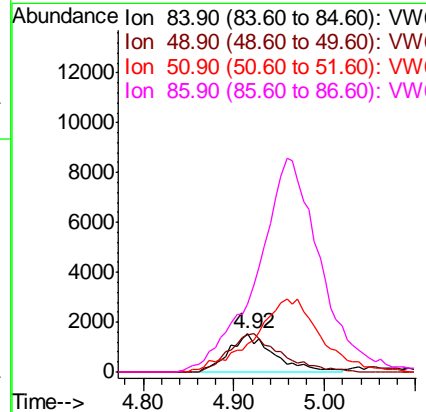
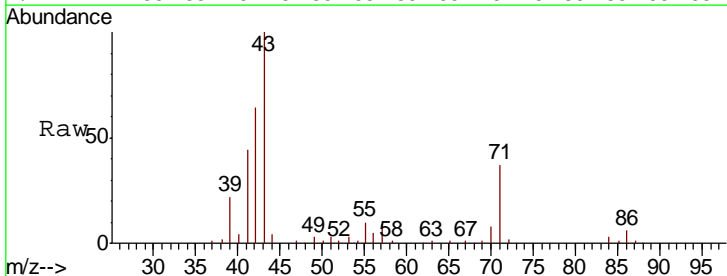
Instrument : MSVOA_W
 ClientSampleID : P001-SS013C-1824-01

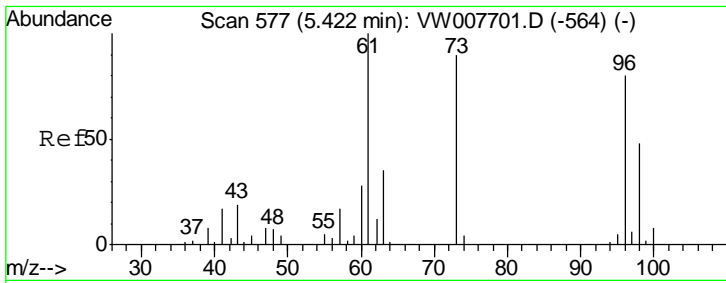
Tgt Ion: 43 Resp: 7222
 Ion Ratio Lower Upper
 43 100
 74 24.1 22.7 34.1



#20
 Methylene Chloride
 Concen: 18.621 ug/l
 RT: 4.92 min Scan# 494
 Delta R.T. 0.01 min
 Lab File: VW007834.D
 Acq: 22 Dec 2018 10:58

Tgt Ion: 84 Resp: 5280
 Ion Ratio Lower Upper
 84 100
 49 96.0 83.7 125.5
 51 67.6 28.2 42.2#
 86 161.1 52.2 78.2#

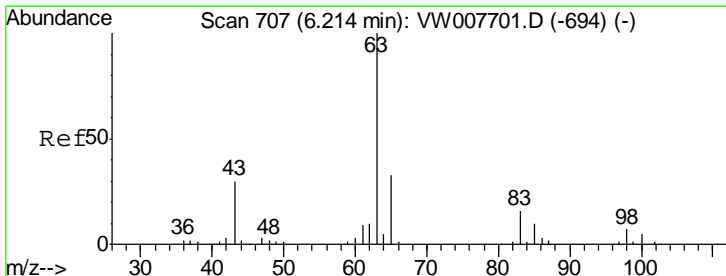
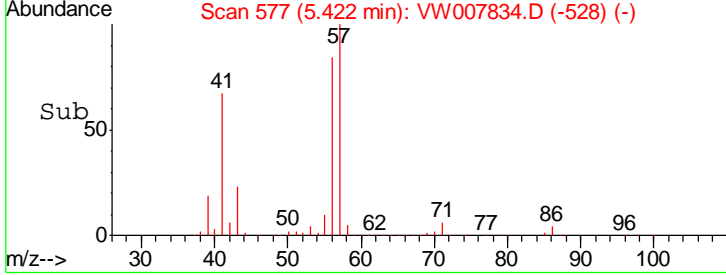
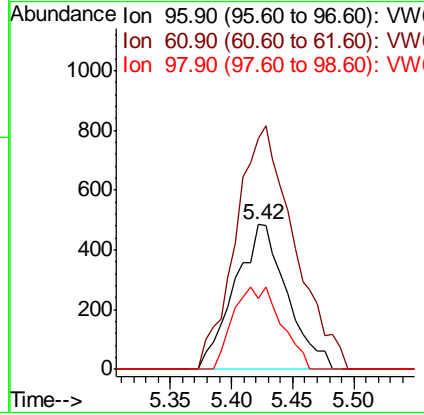
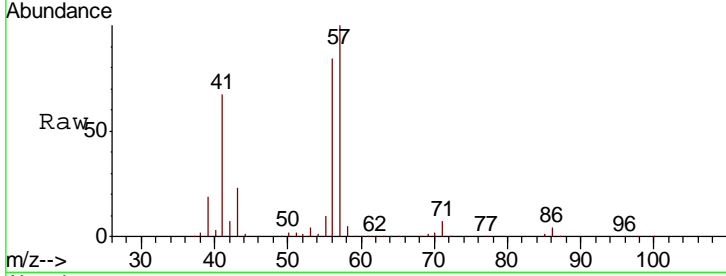




#21
 trans-1,2-Dichloroethene
 Concen: 5.857 ug/l
 RT: 5.42 min Scan# 577
 Delta R.T. -0.00 min
 Lab File: VW007834.D
 Acq: 22 Dec 2018 10:58

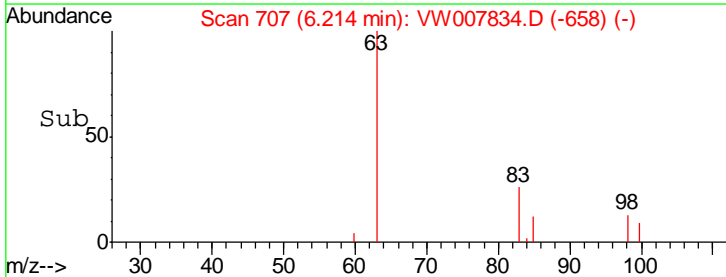
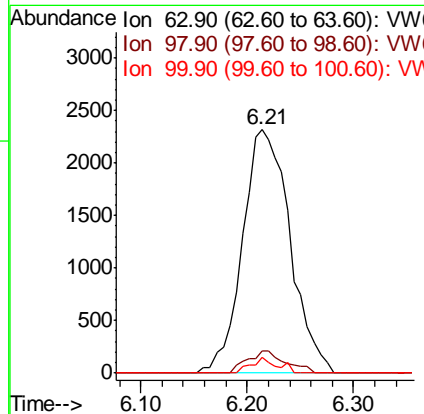
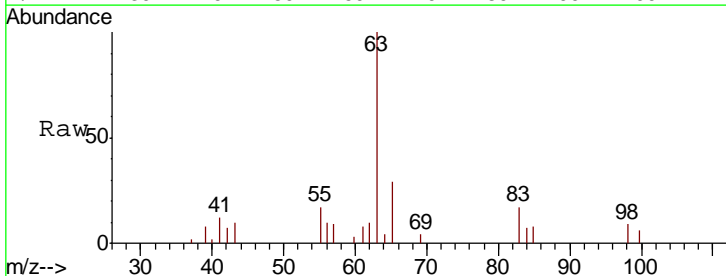
Instrument :
 MSVOA_W
ClientSampled :
 P001-SS013C-1824-01

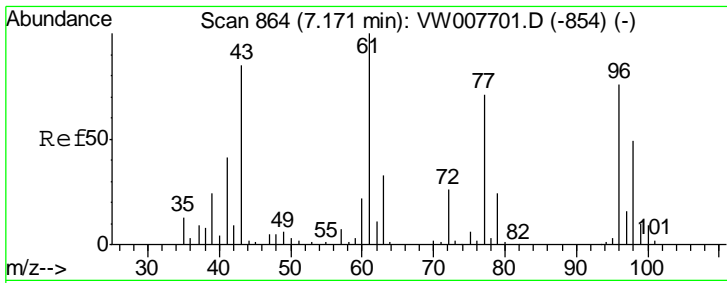
Tgt Ion	Resp	Lower	Upper
96	1448		
61	159.5	100.1	150.1#
98	49.4	48.5	72.7



#24
 1,1-Dichloroethane
 Concen: 17.806 ug/l
 RT: 6.21 min Scan# 707
 Delta R.T. -0.00 min
 Lab File: VW007834.D
 Acq: 22 Dec 2018 10:58

Tgt Ion	Resp	Lower	Upper
63	7230		
98	8.9	3.6	10.9
100	6.3	2.5	7.5

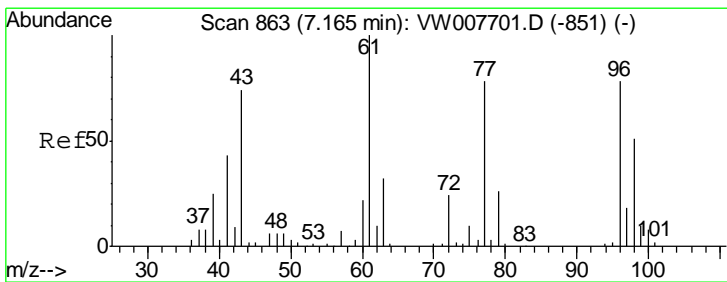
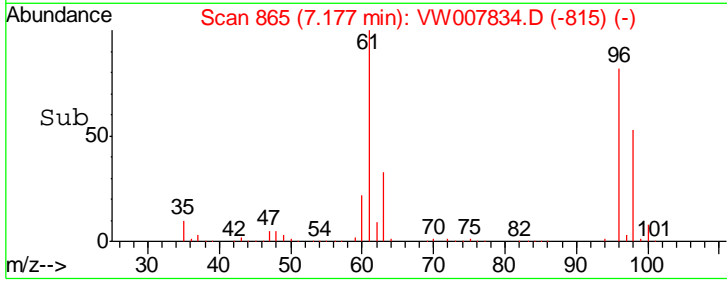
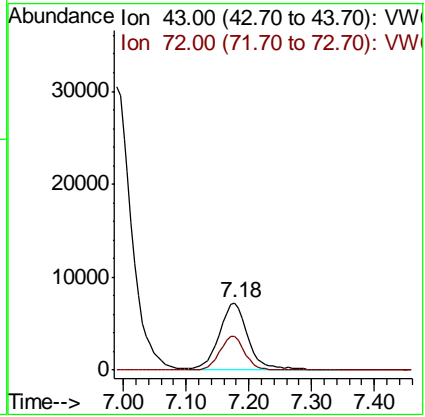
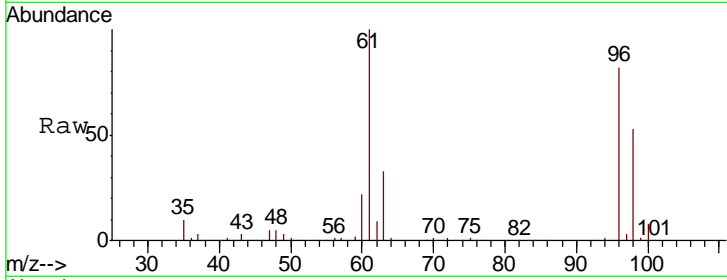




#25
 2-Butanone
 Concen: 427.071 ug/l
 RT: 7.18 min Scan# 865
 Delta R.T. 0.01 min
 Lab File: VW007834.D
 Acq: 22 Dec 2018 10:58

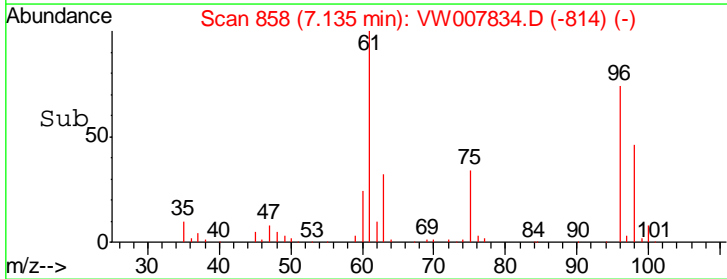
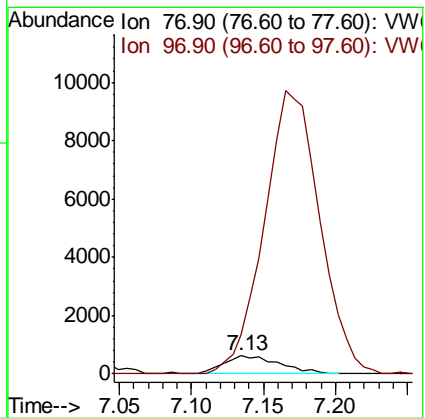
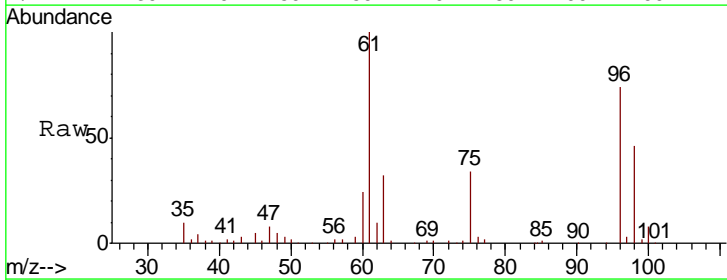
Instrument :
 MSVOA_W
ClientSampled :
 P001-SS013C-1824-01

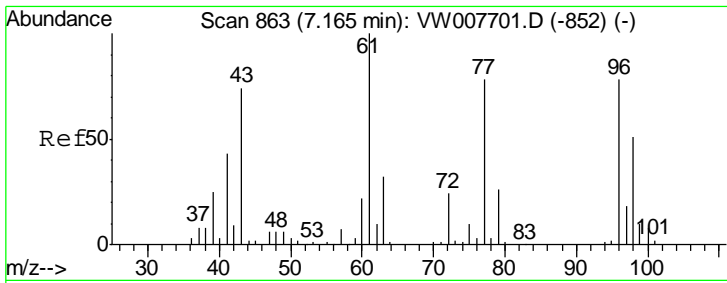
Tgt Ion	Resp	Lower	Upper
43	100		
72	49.5	24.5	36.7#



#26
 2,2-Dichloropropane
 Concen: 5.594 ug/l
 RT: 7.13 min Scan# 858
 Delta R.T. -0.03 min
 Lab File: VW007834.D
 Acq: 22 Dec 2018 10:58

Tgt Ion	Resp	Lower	Upper
77	100		
97	0.0	11.3	33.9#

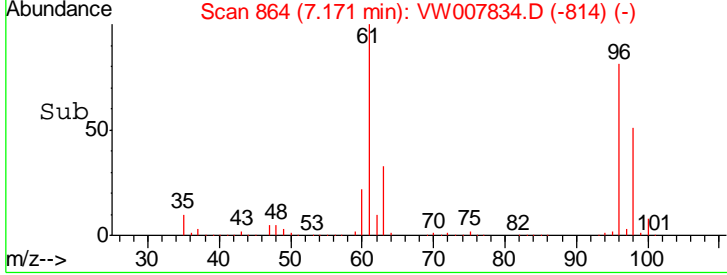
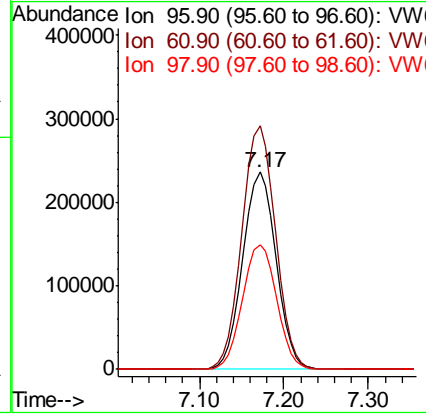
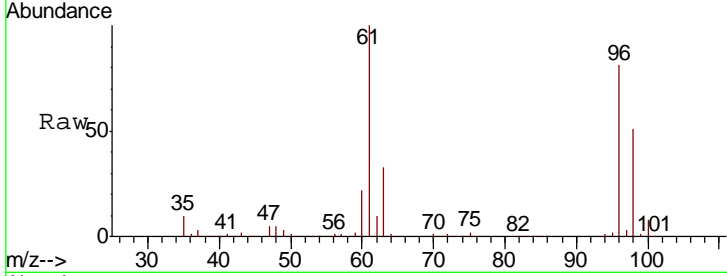




#27
 cis-1,2-Dichloroethene
 Concen: 2409.214 ug/l
 RT: 7.17 min Scan# 864
 Delta R.T. 0.01 min
 Lab File: VW007834.D
 Acq: 22 Dec 2018 10:58

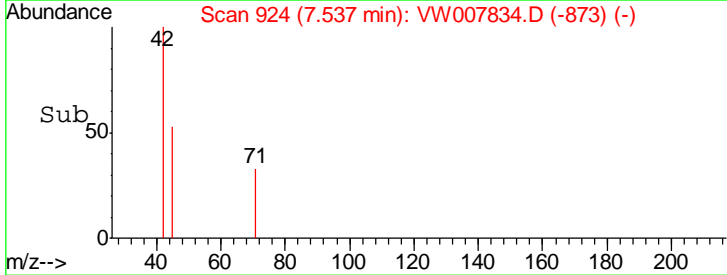
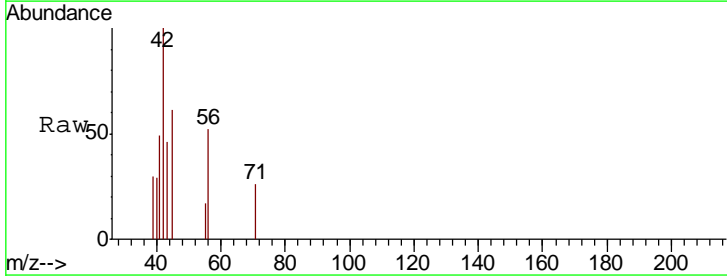
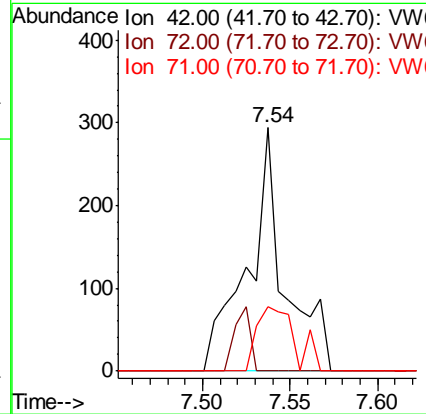
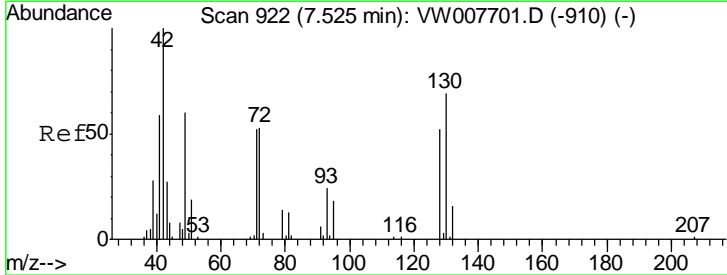
Instrument :
 MSVOA_W
ClientSampled :
 P001-SS013C-1824-01

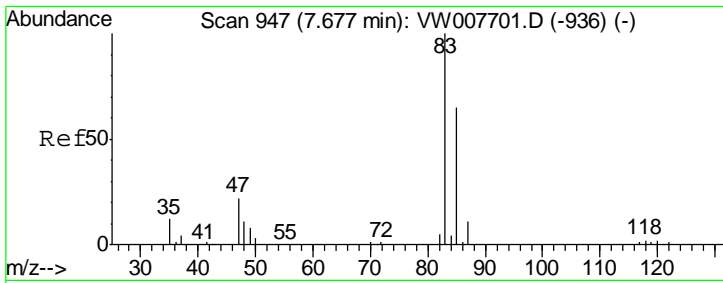
Tgt Ion	Resp	Lower	Upper
96	634549		
Ion Ratio			
96	100		
61	124.4	0.0	271.6
98	64.7	0.0	131.2



#29
 Tetrahydrofuran
 Concen: 13.131 ug/l
 RT: 7.54 min Scan# 924
 Delta R.T. 0.01 min
 Lab File: VW007834.D
 Acq: 22 Dec 2018 10:58

Tgt Ion	Resp	Lower	Upper
42	429		
Ion Ratio			
42	100		
72	11.4	41.7	62.5#
71	27.5	39.0	58.6#

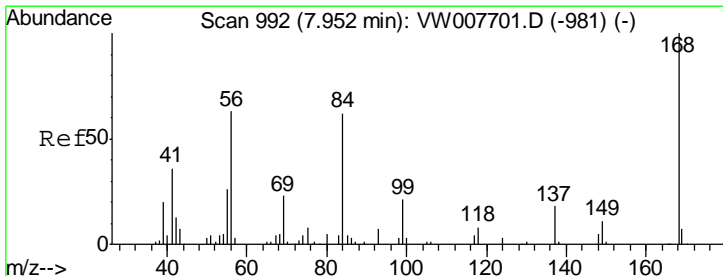
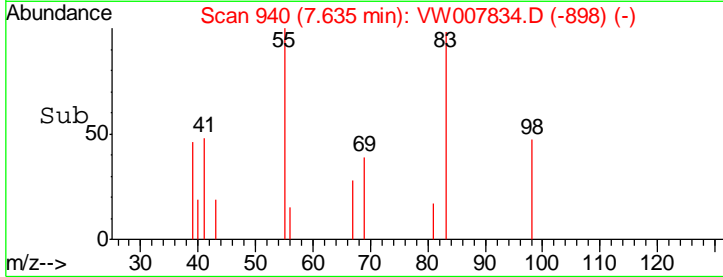
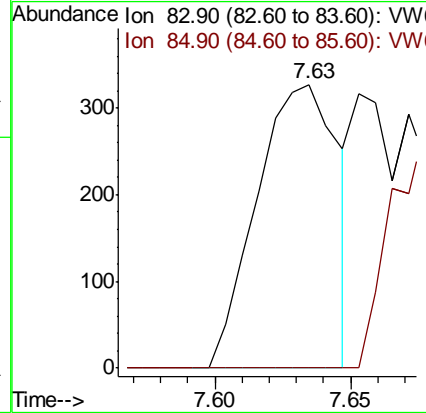
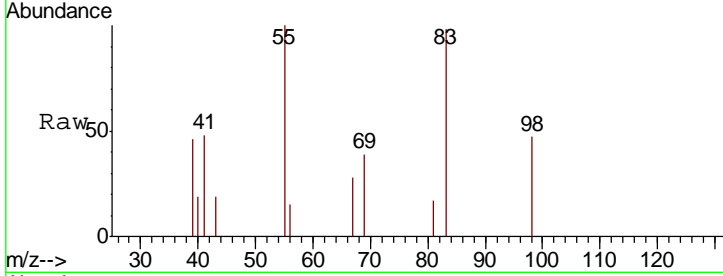




#30
 Chloroform
 Concen: 1.473 ug/l
 RT: 7.63 min Scan# 940
 Delta R.T. -0.04 min
 Lab File: VW007834.D
 Acq: 22 Dec 2018 10:58

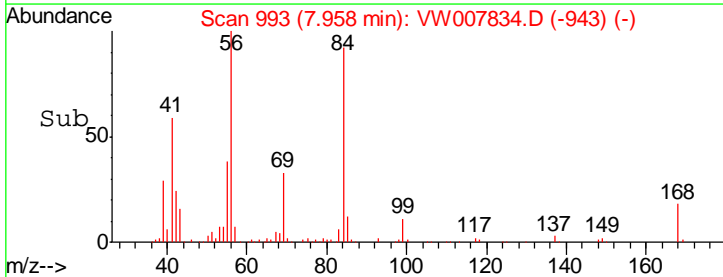
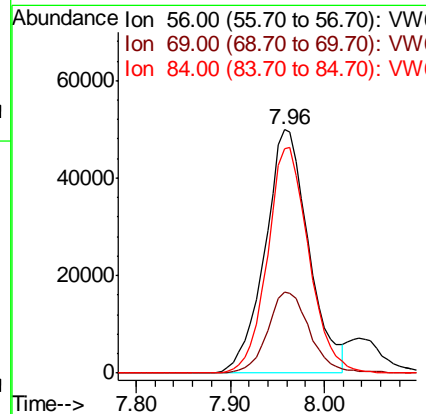
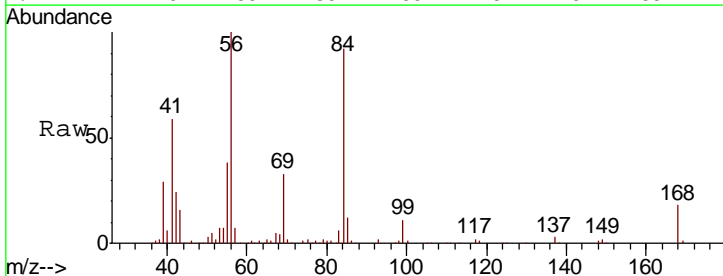
Instrument :
 MSVOA_W
ClientSampled :
 P001-SS013C-1824-01

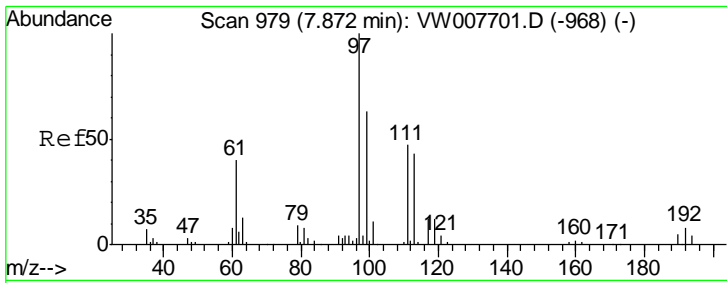
Tgt Ion: 83 Resp: 677
 Ion Ratio Lower Upper
 83 100
 85 0.0 52.2 78.2#



#31
 Cyclohexane
 Concen: 435.388 ug/l
 RT: 7.96 min Scan# 993
 Delta R.T. 0.01 min
 Lab File: VW007834.D
 Acq: 22 Dec 2018 10:58

Tgt Ion: 56 Resp: 161845
 Ion Ratio Lower Upper
 56 100
 69 33.0 29.7 44.5
 84 92.3 78.9 118.3

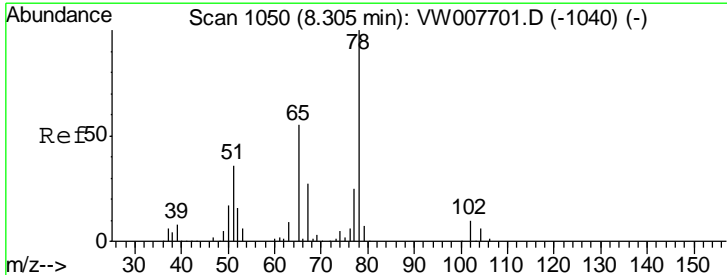
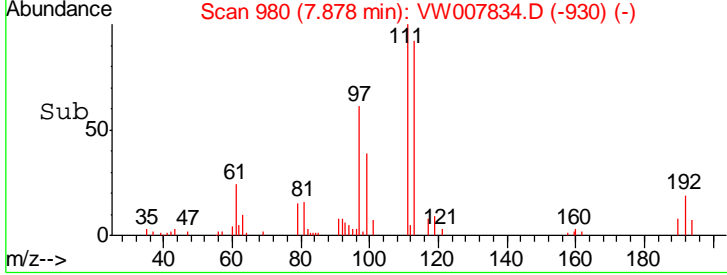
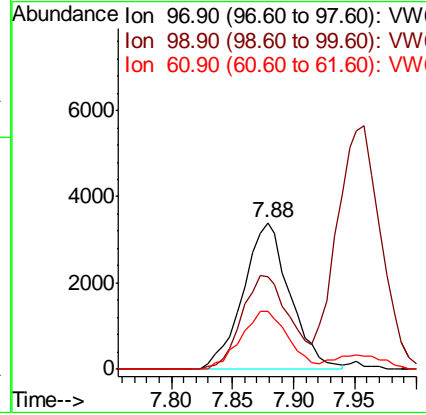
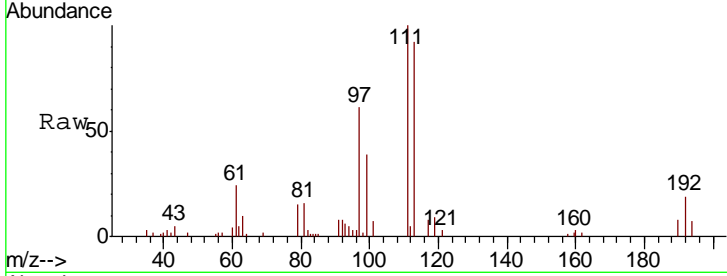




#32
 1,1,1-Trichloroethane
 Concen: 21.577 ug/l
 RT: 7.88 min Scan# 980
 Delta R.T. 0.01 min
 Lab File: VW007834.D
 Acq: 22 Dec 2018 10:58

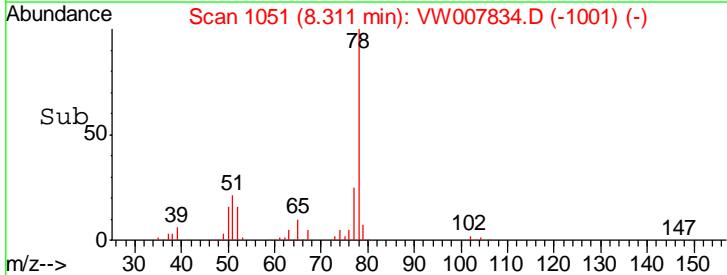
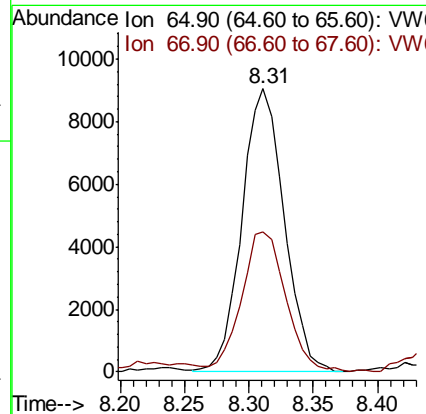
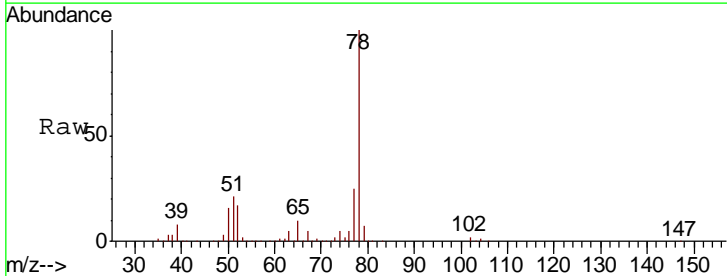
Instrument : MSVOA_W
 ClientSampleId : P001-SS013C-1824-01

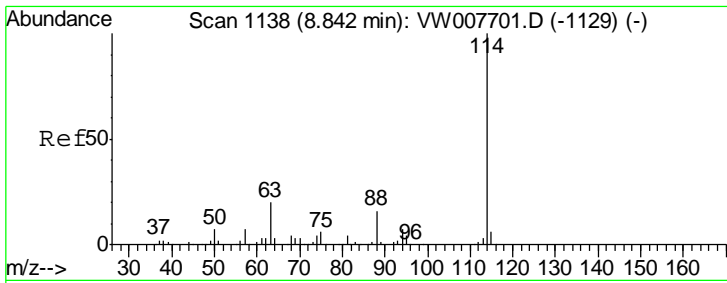
Tgt Ion	Resp	Lower	Upper
97	100		
99	65.9	50.6	76.0
61	40.1	32.3	48.5



#33
 1,2-Dichloroethane-d4
 Concen: 82.443 ug/l
 RT: 8.31 min Scan# 1051
 Delta R.T. 0.01 min
 Lab File: VW007834.D
 Acq: 22 Dec 2018 10:58

Tgt Ion	Resp	Lower	Upper
65	100		
67	51.5	0.0	100.6

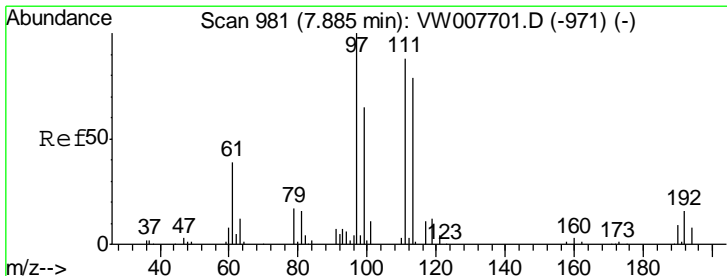
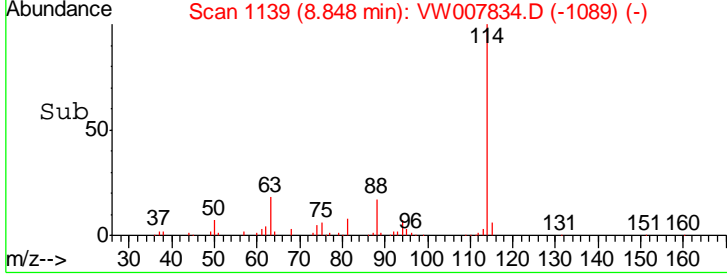
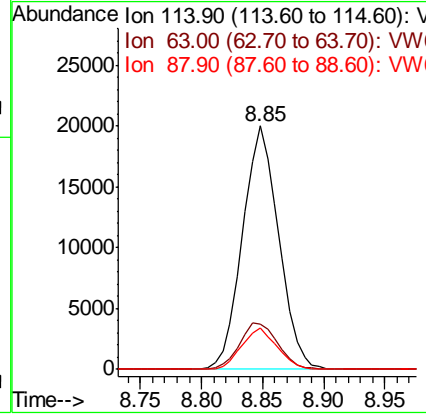
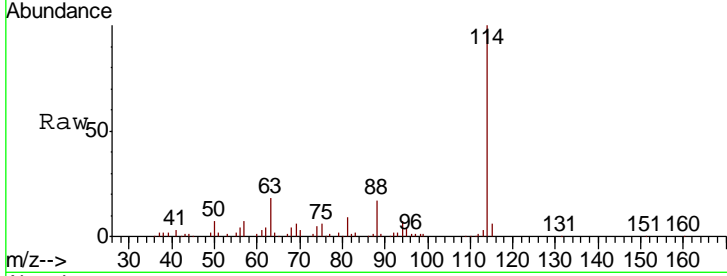




#34
 1,4-Difluorobenzene
 Concen: 50.000 ug/l
 RT: 8.85 min Scan# 1139
 Delta R.T. 0.01 min
 Lab File: VW007834.D
 Acq: 22 Dec 2018 10:58

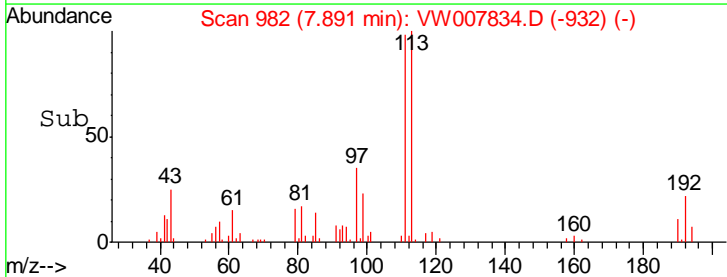
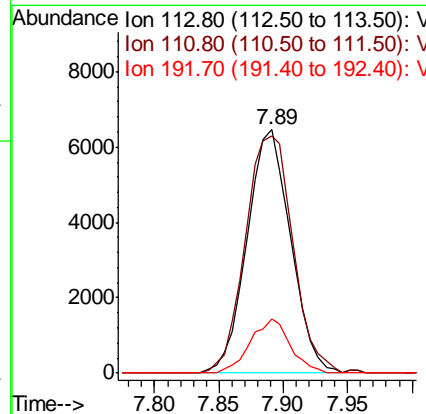
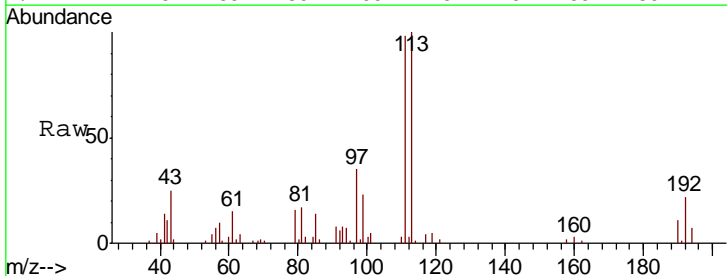
Instrument : MSVOA_W
 ClientSampled : P001-SS013C-1824-01

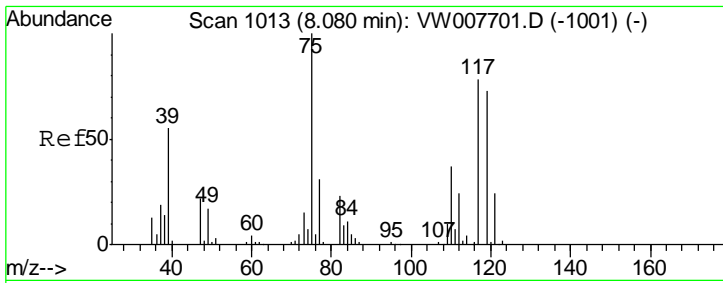
Tgt Ion	Resp	Lower	Upper
114	41066		
63	18.3	0.0	40.0
88	16.7	0.0	32.6



#35
 Dibromofluoromethane
 Concen: 60.465 ug/l
 RT: 7.89 min Scan# 982
 Delta R.T. 0.01 min
 Lab File: VW007834.D
 Acq: 22 Dec 2018 10:58

Tgt Ion	Resp	Lower	Upper
113	15148		
111	106.7	82.6	124.0
192	20.3	15.5	23.3

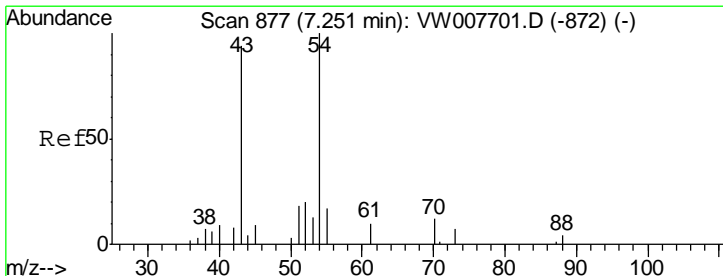
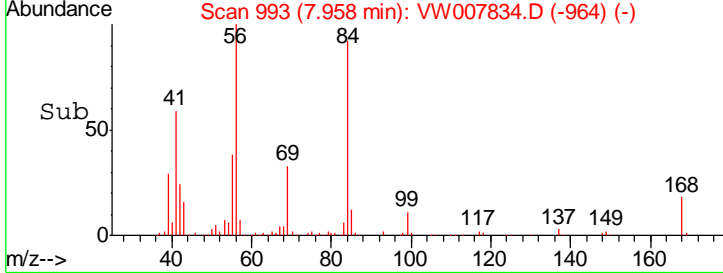
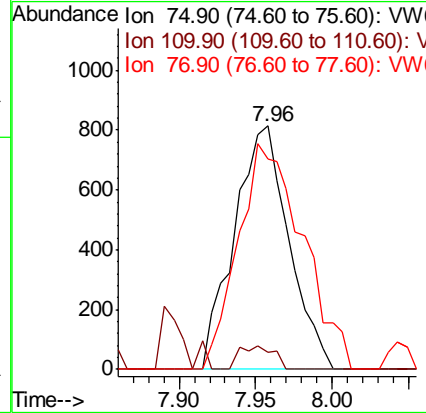
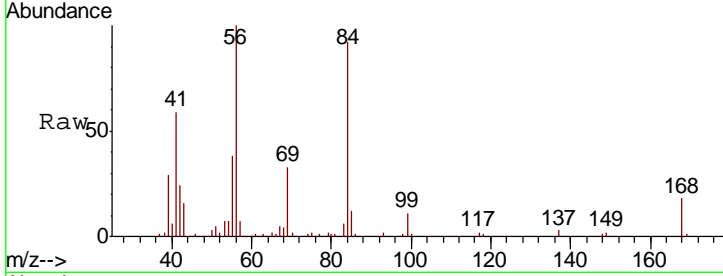




#36
 1,1-Dichloropropene
 Concen: 5.091 ug/l
 RT: 7.96 min Scan# 993
 Delta R.T. -0.12 min
 Lab File: VW007834.D
 Acq: 22 Dec 2018 10:58

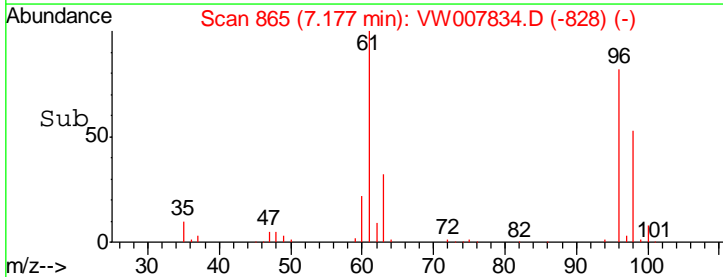
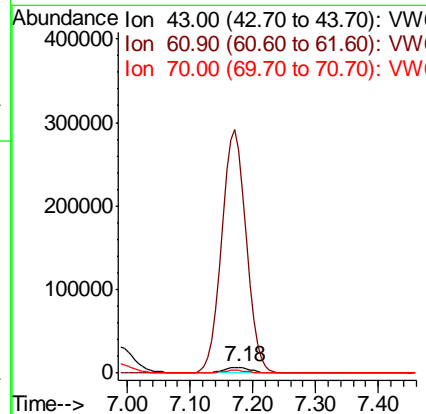
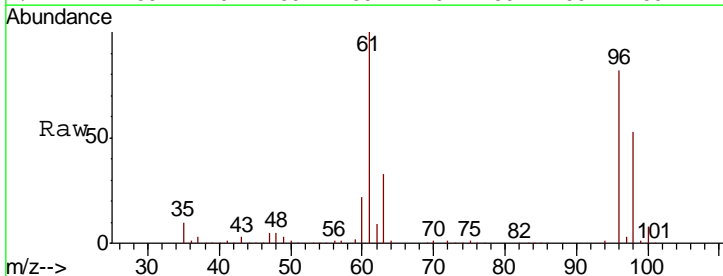
Instrument :
 MSVOA_W
 ClientSampleId :
 P001-SS013C-1824-01

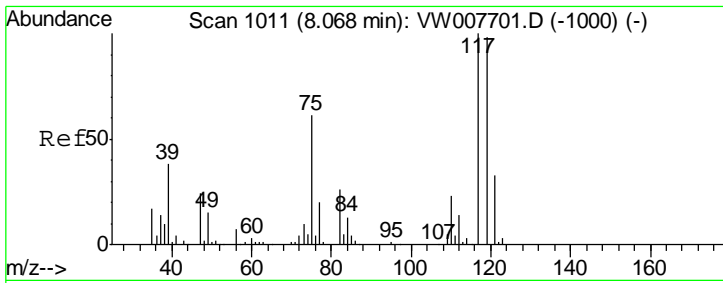
Tgt Ion	Resp	Lower	Upper
75	100		
110	6.1	18.6	55.8#
77	0.0	25.0	37.4#



#37
 Ethyl Acetate
 Concen: 171.000 ug/l
 RT: 7.18 min Scan# 865
 Delta R.T. -0.07 min
 Lab File: VW007834.D
 Acq: 22 Dec 2018 10:58

Tgt Ion	Resp	Lower	Upper
43	100		
61	3374.0	11.2	16.8#
70	36.6	9.3	13.9#

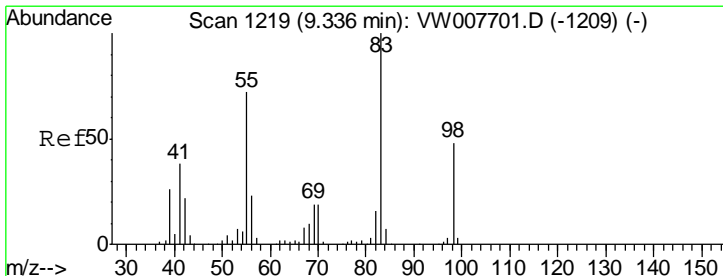
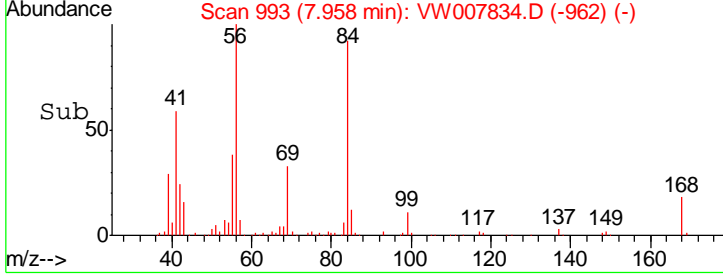
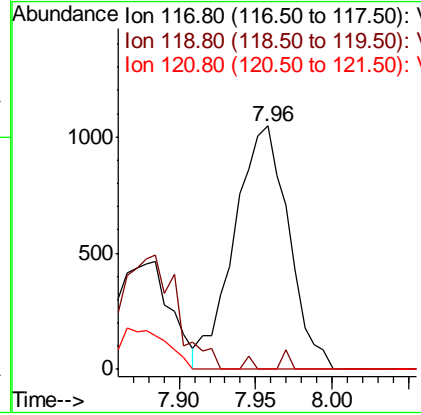
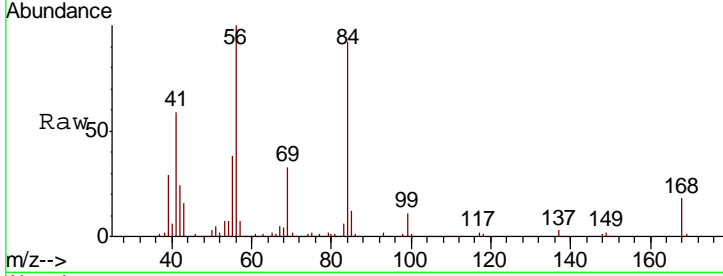




#38
 Carbon Tetrachloride
 Concen: 5.544 ug/l
 RT: 7.96 min Scan# 993
 Delta R.T. -0.11 min
 Lab File: VW007834.D
 Acq: 22 Dec 2018 10:58

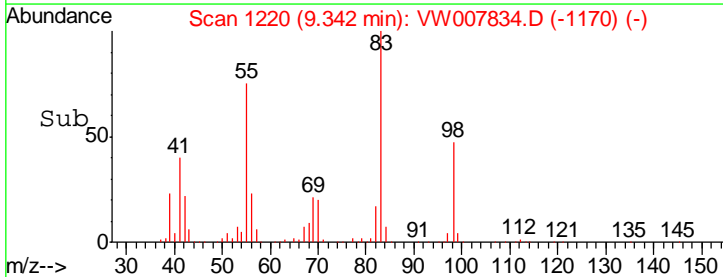
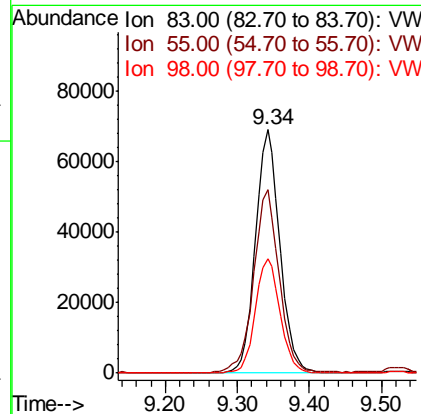
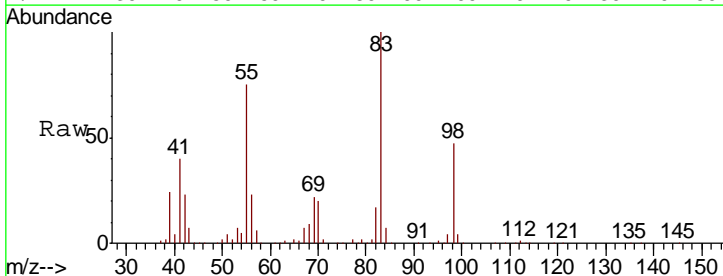
Instrument :
 MSVOA_W
ClientSampled :
 P001-SS013C-1824-01

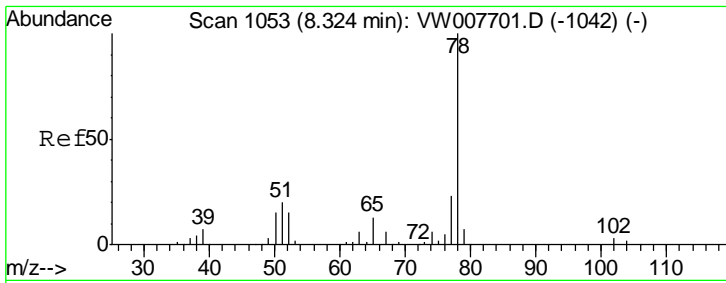
Tgt Ion	Resp	Lower	Upper
117	100		
119	0.0	78.2	117.2#
121	0.0	26.1	39.1#



#39
 Methylcyclohexane
 Concen: 328.110 ug/l
 RT: 9.34 min Scan# 1220
 Delta R.T. 0.01 min
 Lab File: VW007834.D
 Acq: 22 Dec 2018 10:58

Tgt Ion	Resp	Lower	Upper
83	100		
55	75.0	57.2	85.8
98	47.0	38.6	58.0

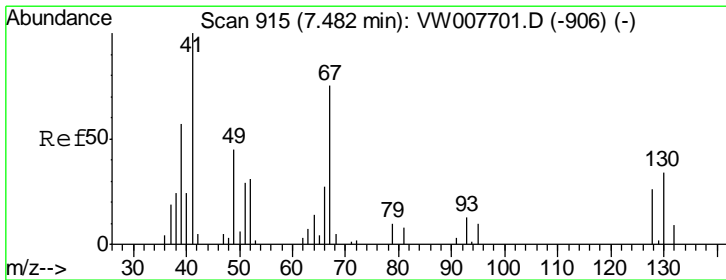
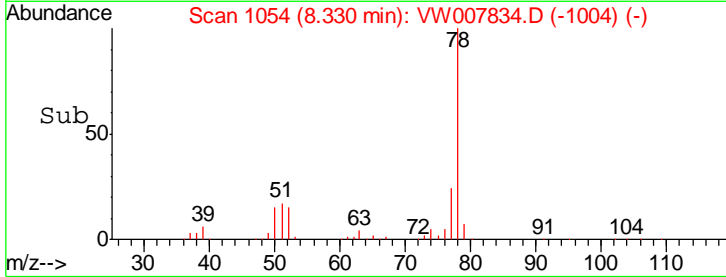
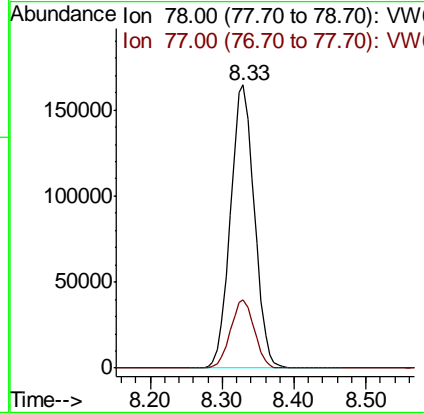
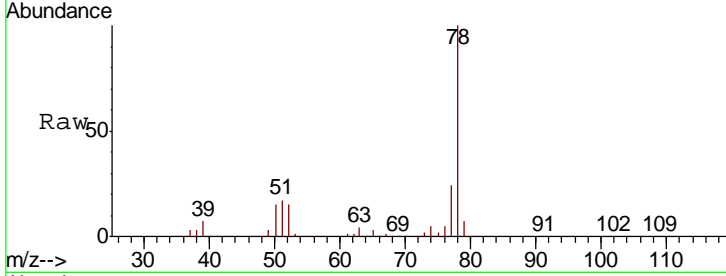




#40
Benzene
Concen: 358.499 ug/l
RT: 8.33 min Scan# 1054
Delta R.T. 0.01 min
Lab File: VW007834.D
Acq: 22 Dec 2018 10:58

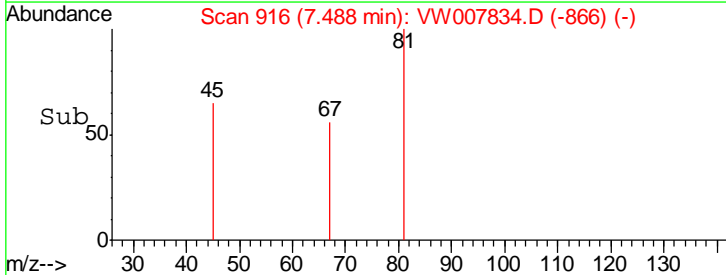
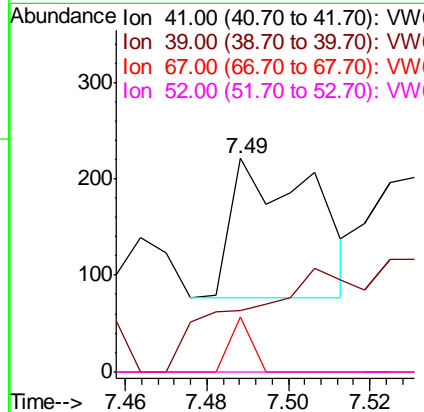
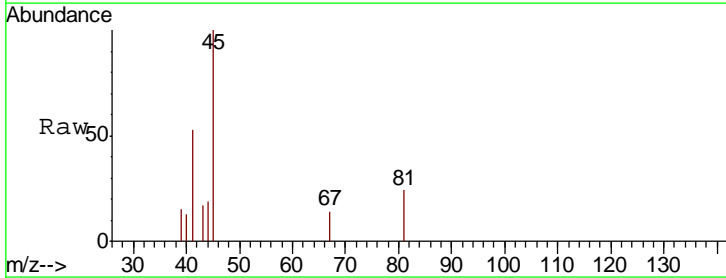
Instrument : MSVOA_W
ClientSampleId : P001-SS013C-1824-01

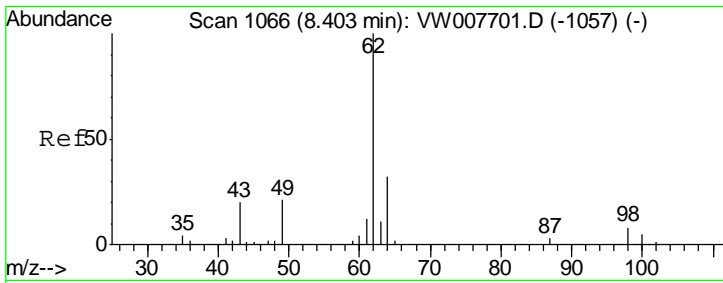
Tgt Ion: 78 Resp: 379178
Ion Ratio Lower Upper
78 100
77 24.3 18.7 28.1



#41
Methacrylonitrile
Concen: 2.562 ug/l
RT: 7.49 min Scan# 916
Delta R.T. 0.01 min
Lab File: VW007834.D
Acq: 22 Dec 2018 10:58

Tgt Ion: 41 Resp: 199
Ion Ratio Lower Upper
41 100
39 0.0 54.2 81.4#
67 0.0 65.7 98.5#
52 0.0 26.2 39.4#

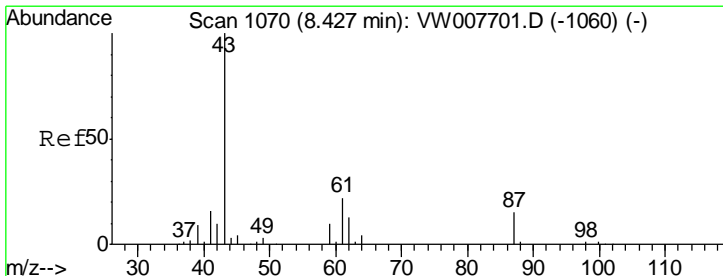
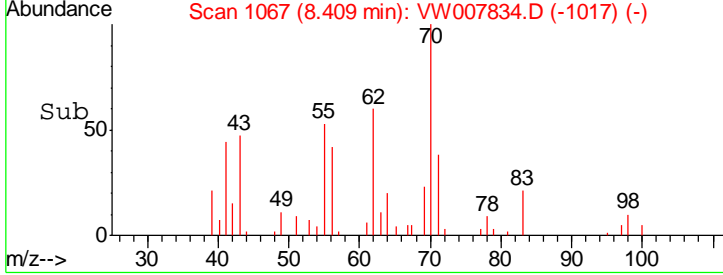
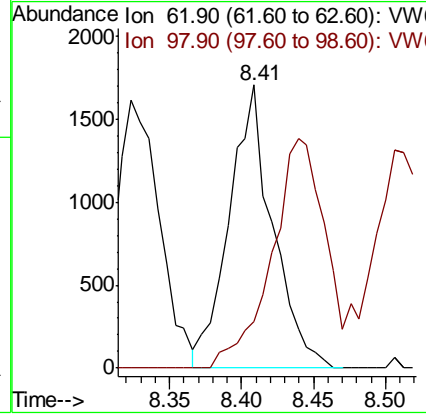
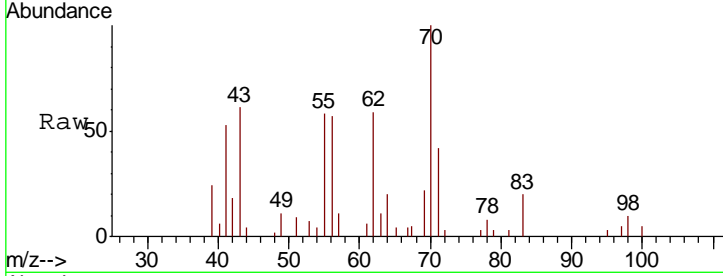




#42
 1,2-Dichloroethane
 Concen: 10.078 ug/l
 RT: 8.41 min Scan# 1067
 Delta R.T. 0.01 min
 Lab File: VW007834.D
 Acq: 22 Dec 2018 10:58

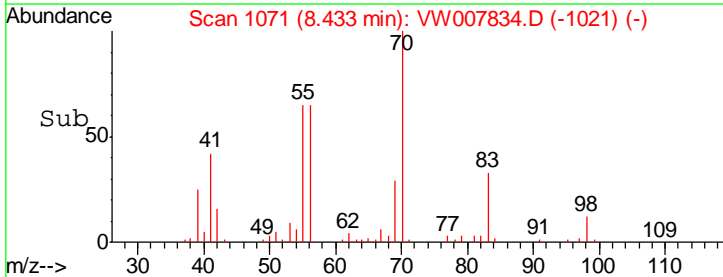
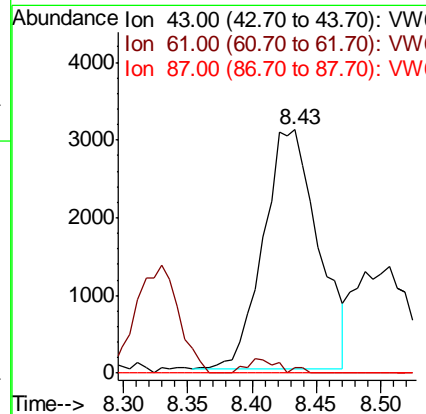
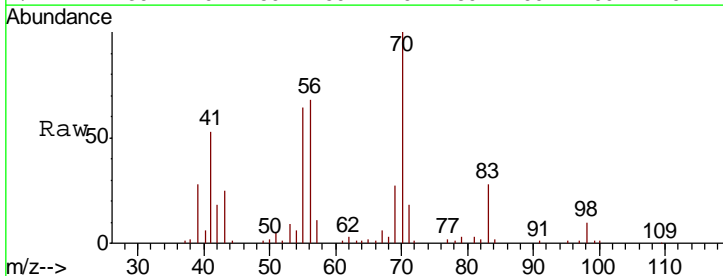
Instrument : MSVOA_W
 ClientSampled : P001-SS013C-1824-01

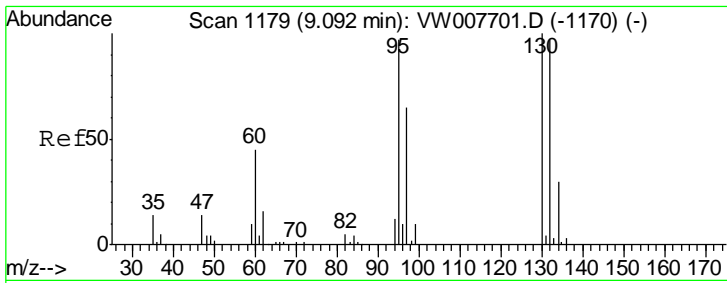
Tgt Ion	Resp	Ion Ratio	Lower	Upper
62	3572	100		
98		0.0	0.0	16.6



#43
 Isopropyl Acetate
 Concen: 33.238 ug/l
 RT: 8.43 min Scan# 1071
 Delta R.T. 0.01 min
 Lab File: VW007834.D
 Acq: 22 Dec 2018 10:58

Tgt Ion	Resp	Ion Ratio	Lower	Upper
43	9109	100		
61		0.0	26.3	39.5#
87		0.0	12.0	18.0#

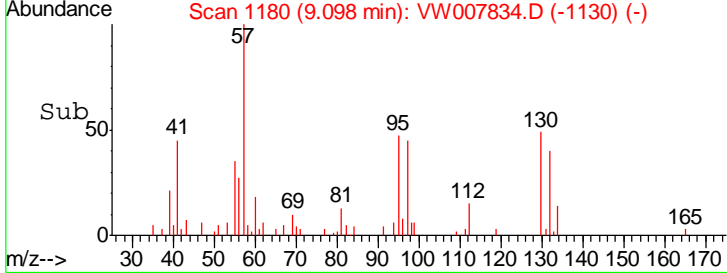
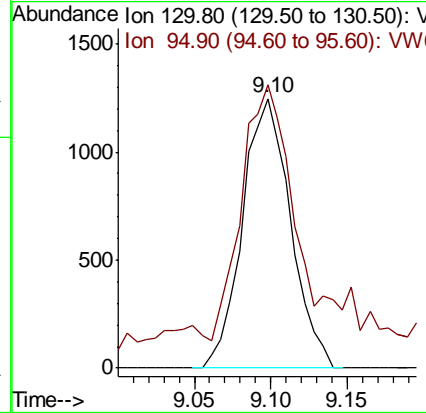
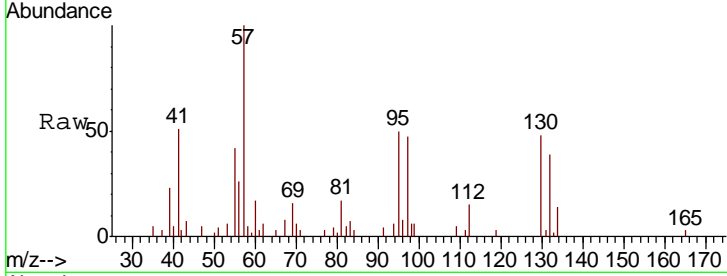




#44
 Trichloroethene
 Concen: 8.501 ug/l
 RT: 9.10 min Scan# 1180
 Delta R.T. 0.01 min
 Lab File: VW007834.D
 Acq: 22 Dec 2018 10:58

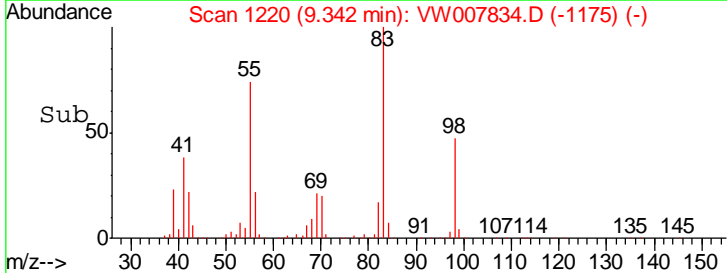
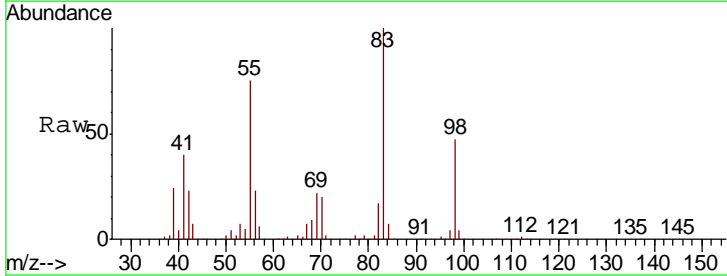
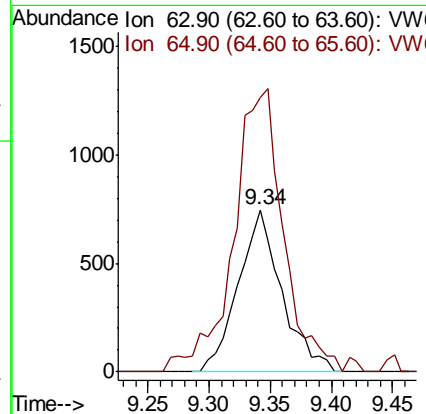
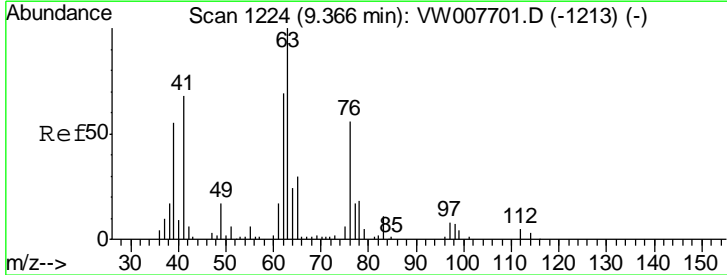
Instrument : MSVOA_W
 ClientSampled : P001-SS013C-1824-01

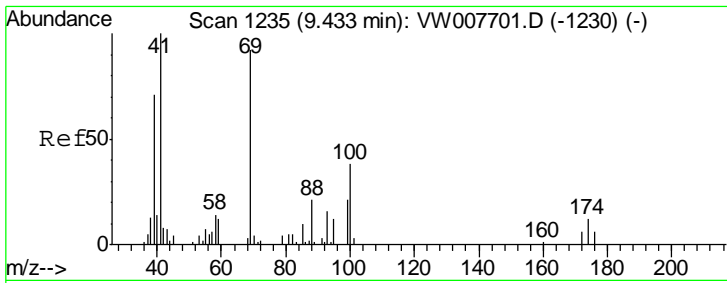
Tgt Ion: 130 Resp: 2719
 Ion Ratio Lower Upper
 130 100
 95 88.9 0.0 194.8



#45
 1,2-Dichloropropane
 Concen: 7.840 ug/l
 RT: 9.34 min Scan# 1220
 Delta R.T. -0.02 min
 Lab File: VW007834.D
 Acq: 22 Dec 2018 10:58

Tgt Ion: 63 Resp: 1840
 Ion Ratio Lower Upper
 63 100
 65 169.4 23.8 35.8#

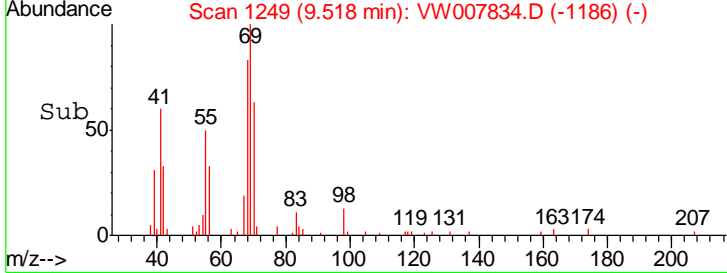
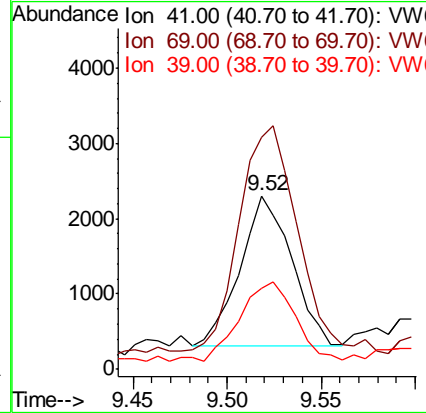
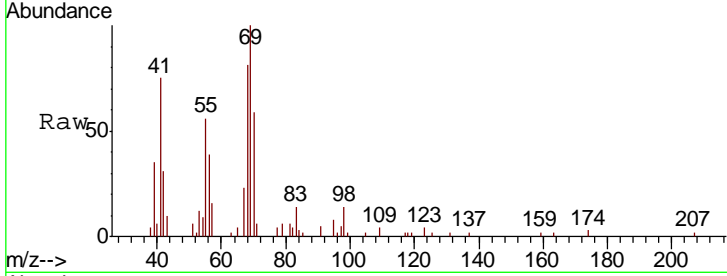




#48
 Methyl methacrylate
 Concen: 27.896 ug/l
 RT: 9.52 min Scan# 1249
 Delta R.T. 0.09 min
 Lab File: VW007834.D
 Acq: 22 Dec 2018 10:58

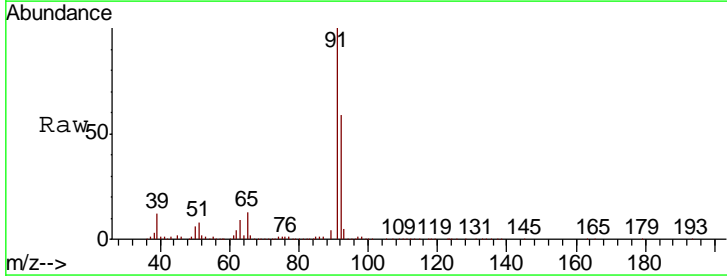
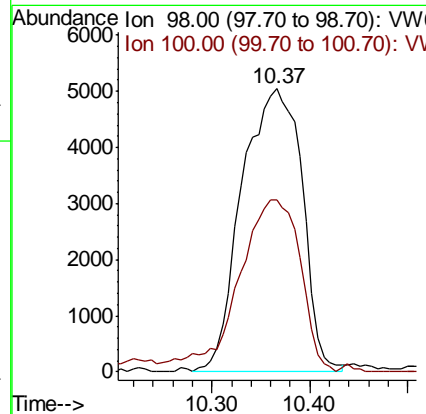
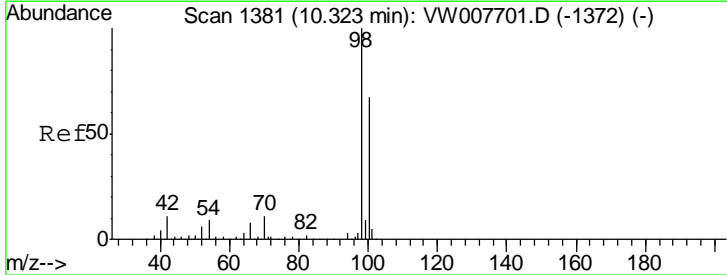
Instrument :
 MSVOA_W
ClientSampled :
 P001-SS013C-1824-01

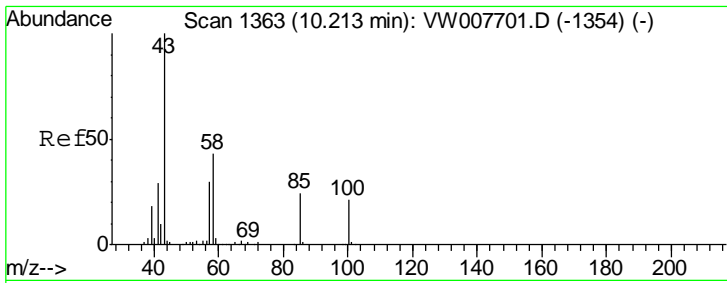
Tgt Ion	Resp	Lower	Upper
41	100		
69	171.3	74.2	111.2#
39	54.1	53.9	80.9



#50
 Toluene-d8
 Concen: 22.869 ug/l
 RT: 10.37 min Scan# 1388
 Delta R.T. 0.04 min
 Lab File: VW007834.D
 Acq: 22 Dec 2018 10:58

Tgt Ion	Resp	Lower	Upper
98	100		
100	62.5	52.2	78.2

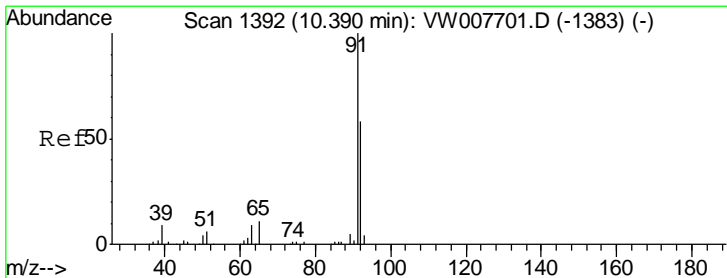
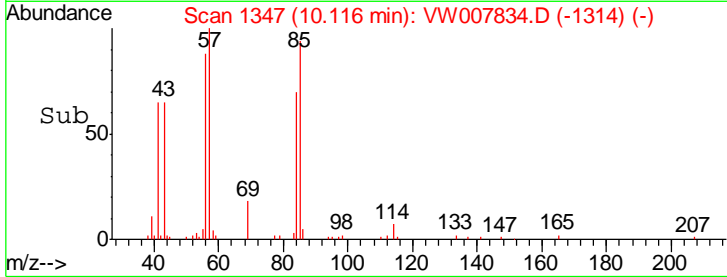
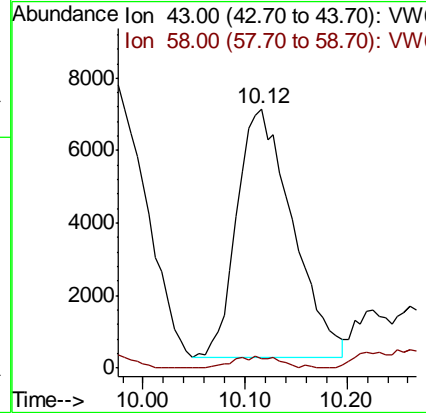
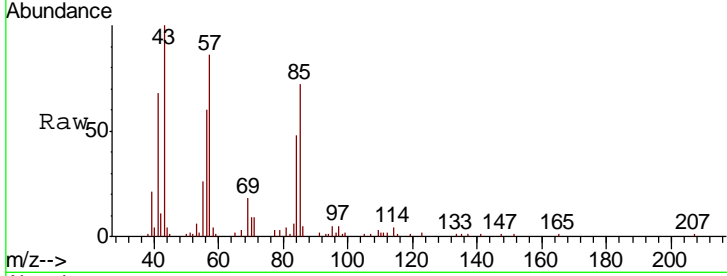




#51
 4-Methyl-2-Pentanone
 Concen: 200.948 ug/l
 RT: 10.12 min Scan# 1347
 Delta R.T. -0.10 min
 Lab File: VW007834.D
 Acq: 22 Dec 2018 10:58

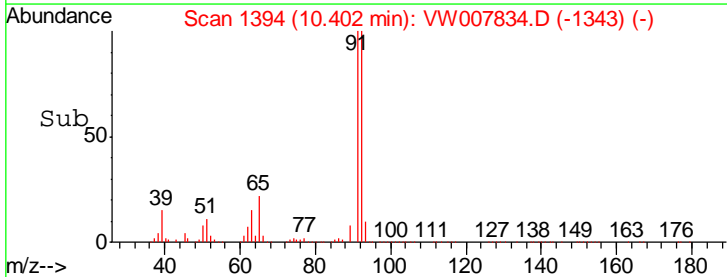
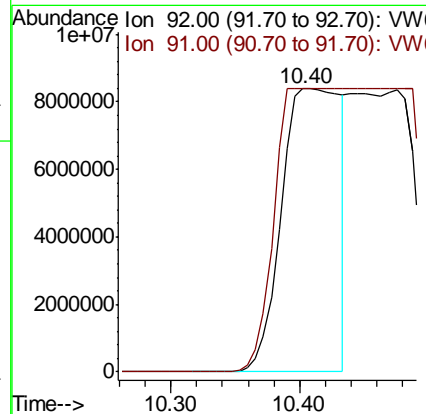
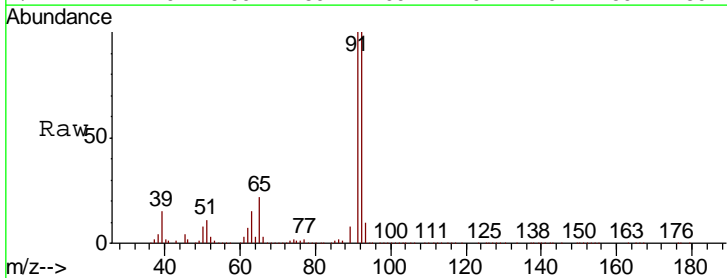
Instrument :
 MSVOA_W
 ClientSampled :
 P001-SS013C-1824-01

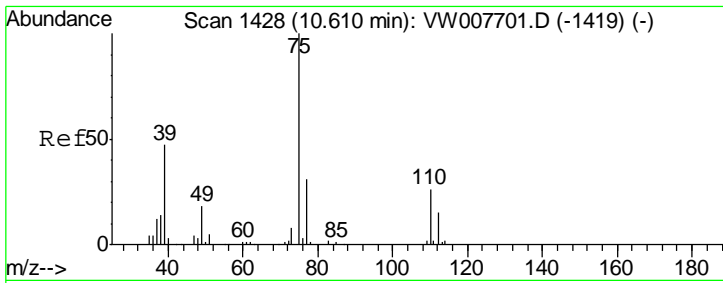
Tgt Ion: 43 Resp: 26026
 Ion Ratio Lower Upper
 43 100
 58 3.8 33.2 49.8#



#52
 Toluene
 Concen: 37459.765 ug/l
 RT: 10.40 min Scan# 1394
 Delta R.T. 0.01 min
 Lab File: VW007834.D
 Acq: 22 Dec 2018 10:58

Tgt Ion: 92 Resp: 26582692
 Ion Ratio Lower Upper
 92 100
 91 0.0 137.0 205.4#



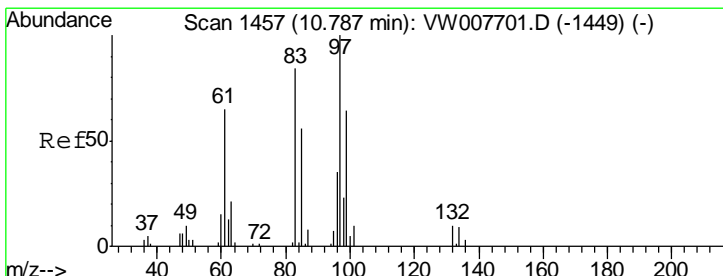
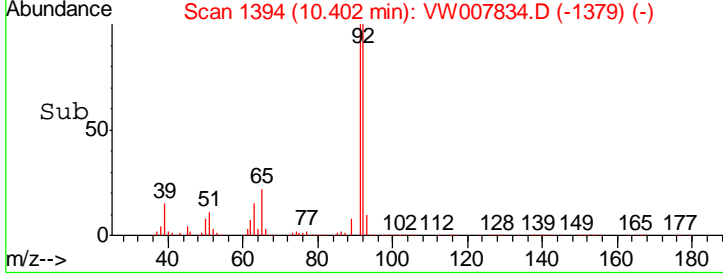
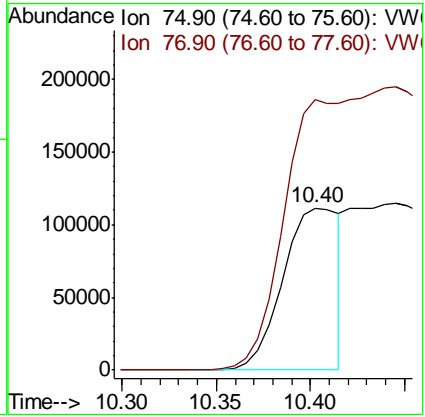
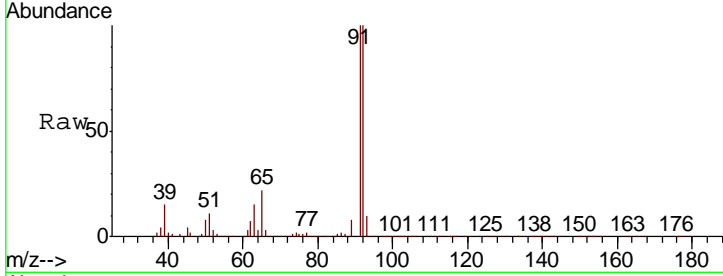


#53
 t-1,3-Dichloropropene
 Concen: 613.314 ug/l
 RT: 10.40 min Scan# 1394
 Delta R.T. -0.21 min
 Lab File: VW007834.D
 Acq: 22 Dec 2018 10:58

Instrument :
 MSVOA_W
ClientSampled :
 P001-SS013C-1824-01

Tgt Ion: 75 Resp: 231692

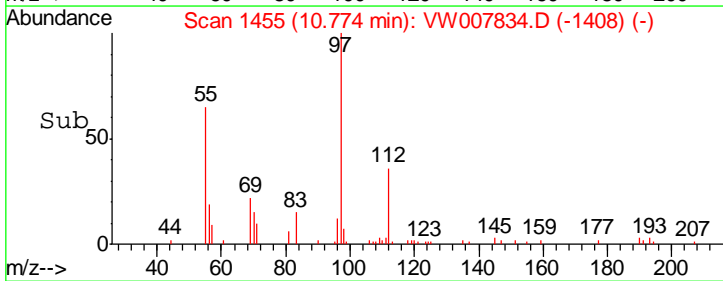
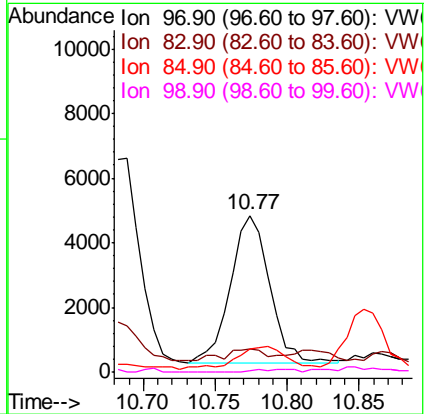
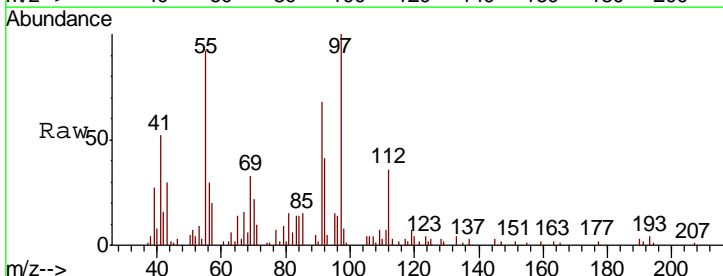
Ion	Ratio	Lower	Upper
75	100		
77	167.2	25.2	37.8#

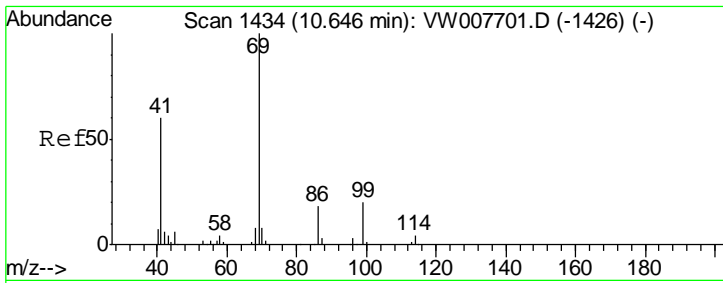


#55
 1,1,2-Trichloroethane
 Concen: 43.251 ug/l
 RT: 10.77 min Scan# 1455
 Delta R.T. -0.01 min
 Lab File: VW007834.D
 Acq: 22 Dec 2018 10:58

Tgt Ion: 97 Resp: 8614

Ion	Ratio	Lower	Upper
97	100		
83	7.9	67.5	101.3#
85	12.0	44.8	67.2#
99	1.3	51.0	76.4#

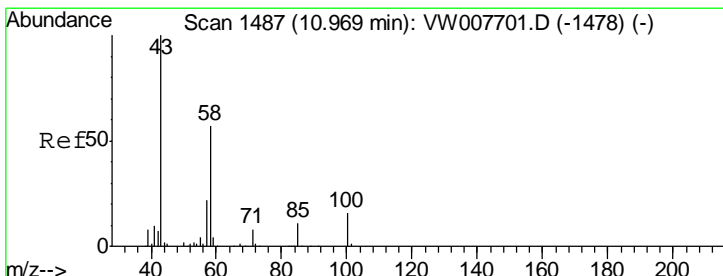
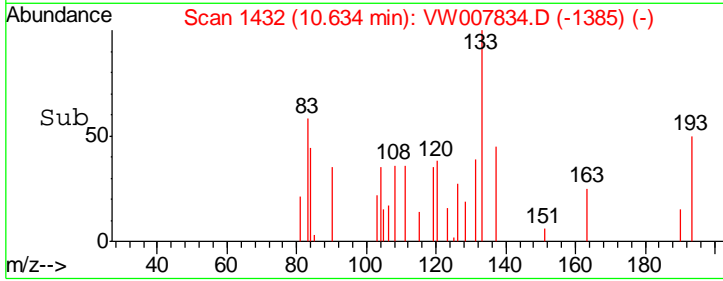
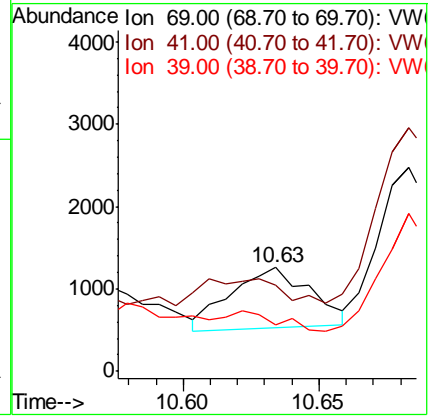
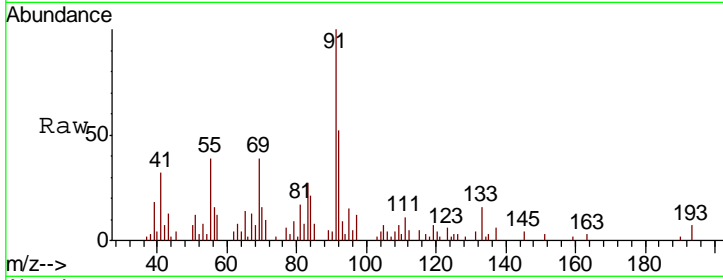




#56
 Ethyl methacrylate
 Concen: 6.341 ug/l
 RT: 10.63 min Scan# 1432
 Delta R.T. -0.01 min
 Lab File: VW007834.D
 Acq: 22 Dec 2018 10:58

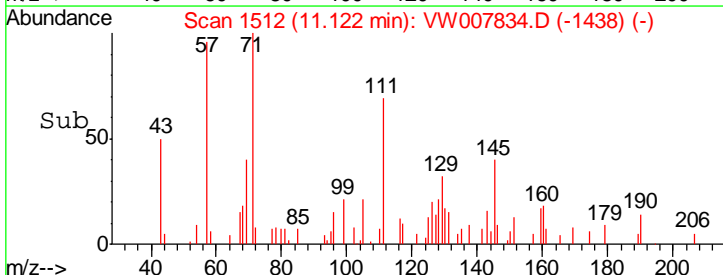
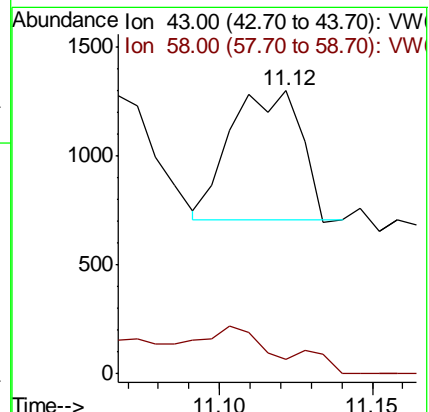
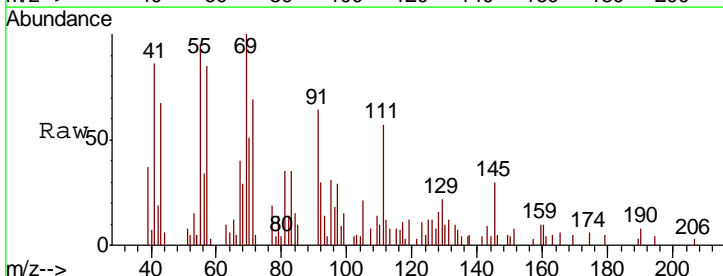
Instrument : MSVOA_W
 ClientSampled : P001-SS013C-1824-01

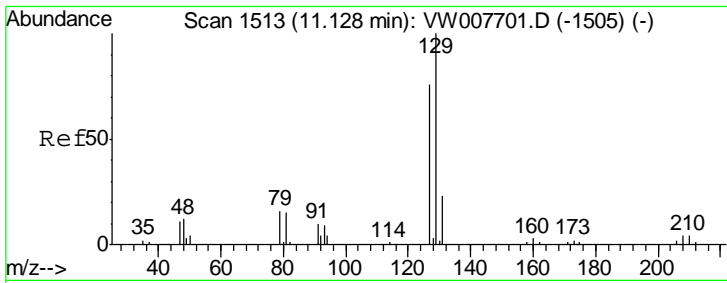
Tgt Ion	Resp	Lower	Upper
69	100		
41	0.0	48.9	73.3#
39	0.0	31.3	46.9#



#59
 2-Hexanone
 Concen: 10.364 ug/l
 RT: 11.12 min Scan# 1512
 Delta R.T. 0.15 min
 Lab File: VW007834.D
 Acq: 22 Dec 2018 10:58

Tgt Ion	Resp	Lower	Upper
43	100		
58	41.8	27.7	83.1

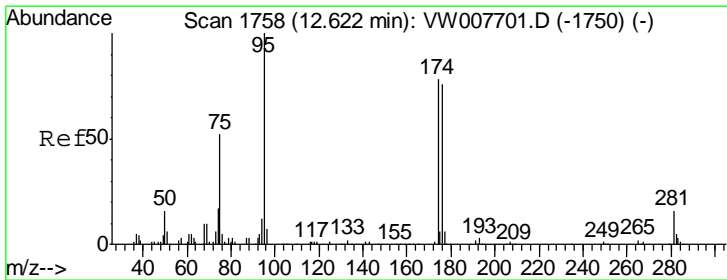
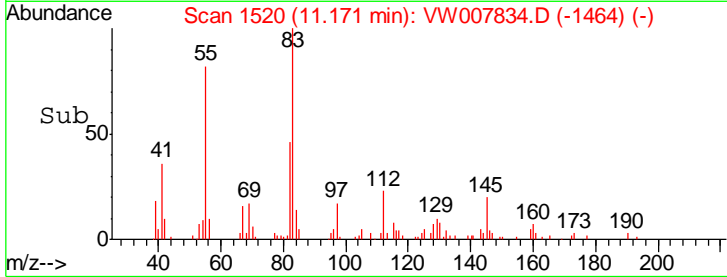
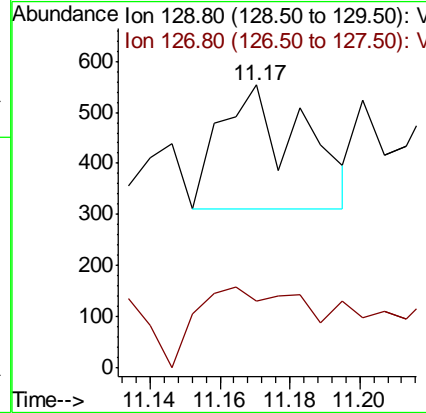
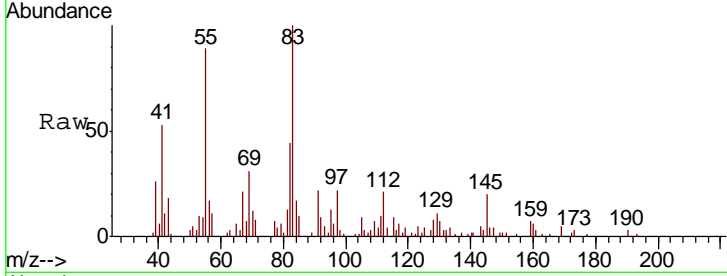




#60
 Dibromochloromethane
 Concen: 1.490 ug/l
 RT: 11.17 min Scan# 1520
 Delta R.T. 0.04 min
 Lab File: VW007834.D
 Acq: 22 Dec 2018 10:58

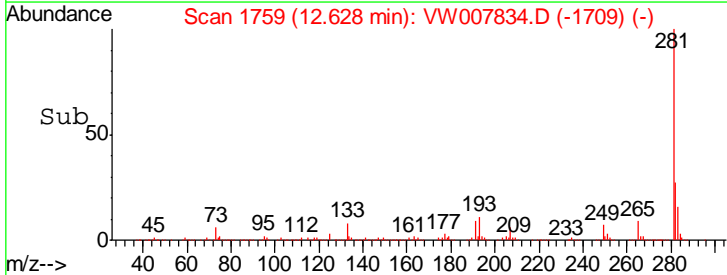
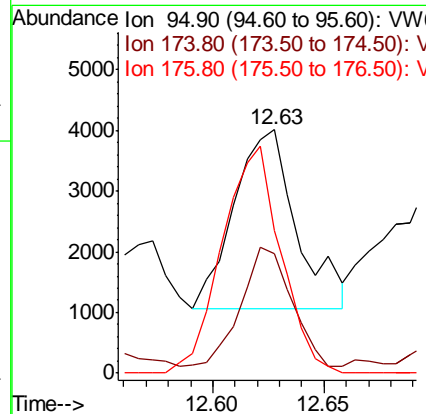
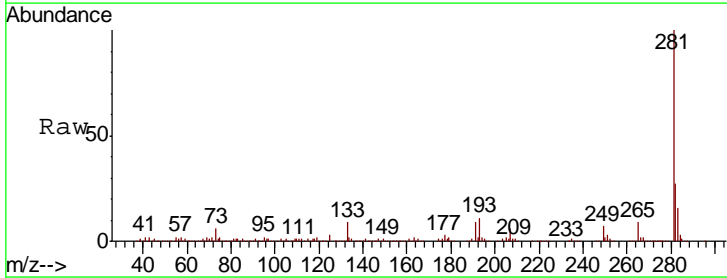
Instrument :
 MSVOA_W
 ClientSampled :
 P001-SS013C-1824-01

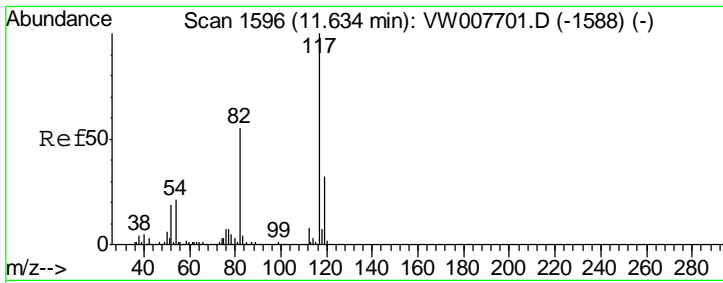
Tgt Ion: 129 Resp: 393
 Ion Ratio Lower Upper
 129 100
 127 85.0 38.3 114.9



#62
 4-Bromofluorobenzene
 Concen: 15.880 ug/l
 RT: 12.63 min Scan# 1759
 Delta R.T. 0.01 min
 Lab File: VW007834.D
 Acq: 22 Dec 2018 10:58

Tgt Ion: 95 Resp: 5794
 Ion Ratio Lower Upper
 95 100
 174 53.0 0.0 152.2
 176 118.0 0.0 146.8

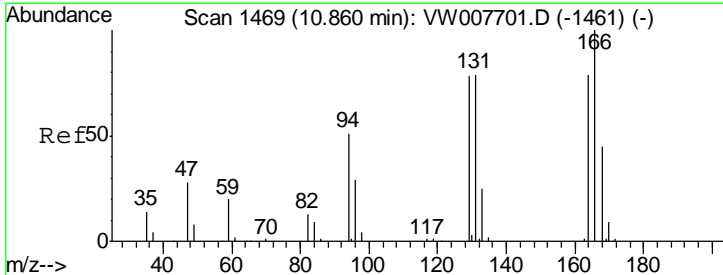
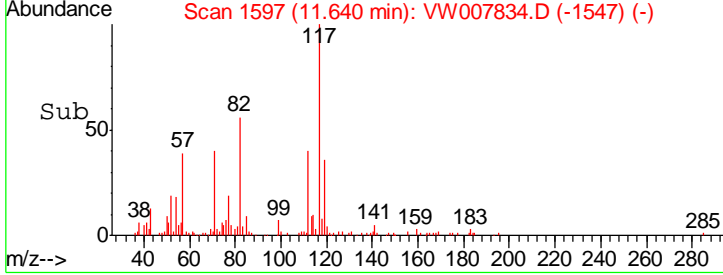
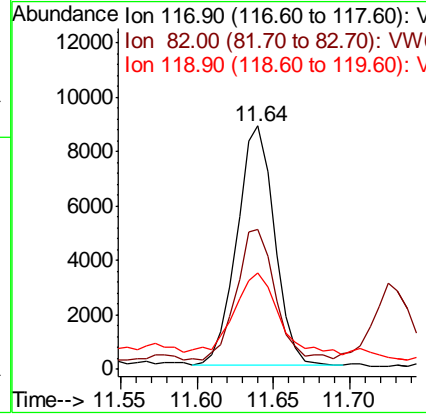
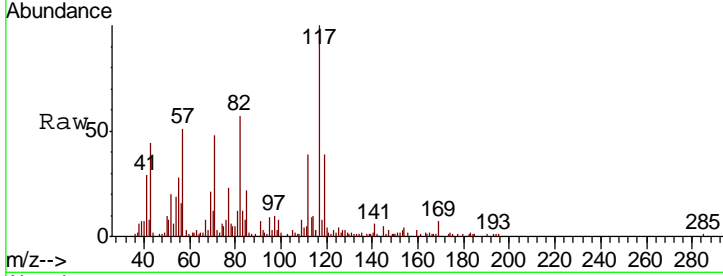




#63
 Chlorobenzene-d5
 Concen: 50.000 ug/l
 RT: 11.64 min Scan# 1597
 Delta R.T. 0.01 min
 Lab File: VW007834.D
 Acq: 22 Dec 2018 10:58

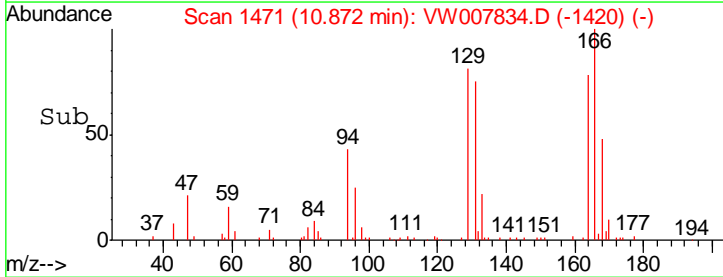
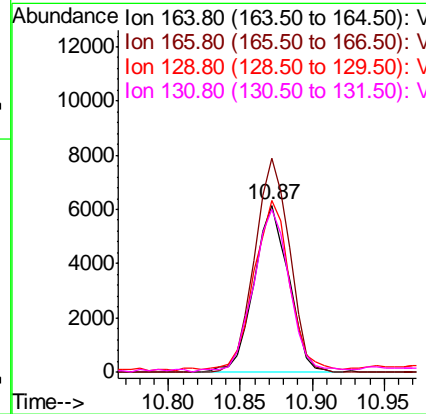
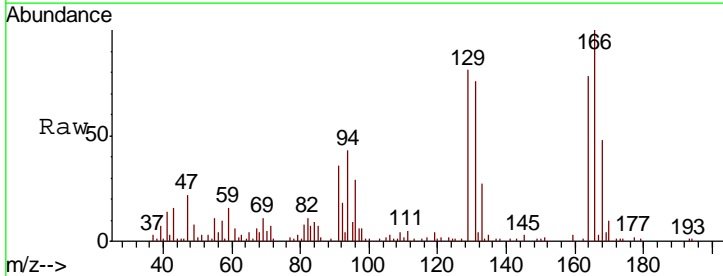
Instrument : MSVOA_W
 ClientSampleId : P001-SS013C-1824-01

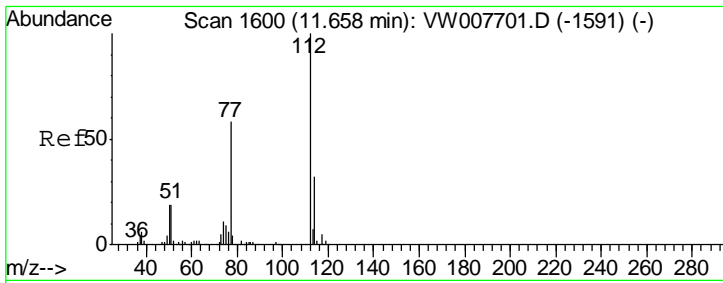
Tgt Ion	Resp	Lower	Upper
117	14938		
82	54.3	44.3	66.5
119	34.3	25.7	38.5



#64
 Tetrachloroethene
 Concen: 96.105 ug/l
 RT: 10.87 min Scan# 1471
 Delta R.T. 0.01 min
 Lab File: VW007834.D
 Acq: 22 Dec 2018 10:58

Tgt Ion	Resp	Lower	Upper
164	10166		
166	128.2	101.0	151.6
129	102.0	78.7	118.1
131	97.3	79.4	119.0

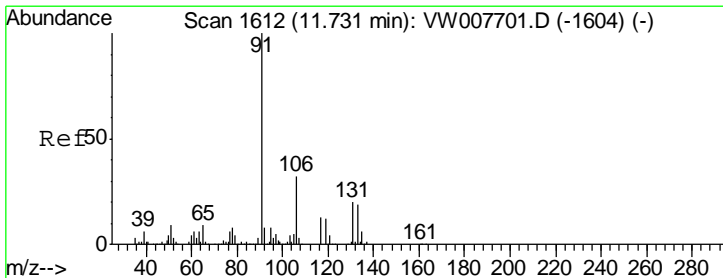
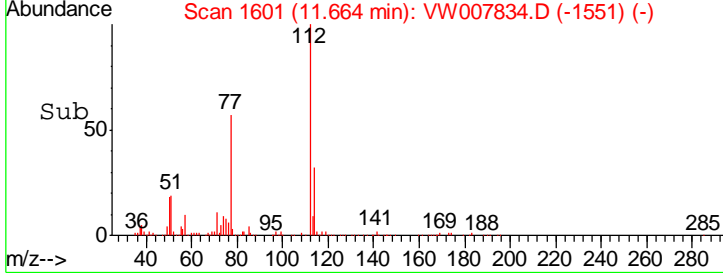
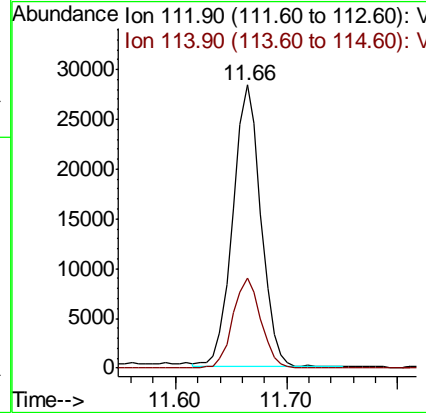
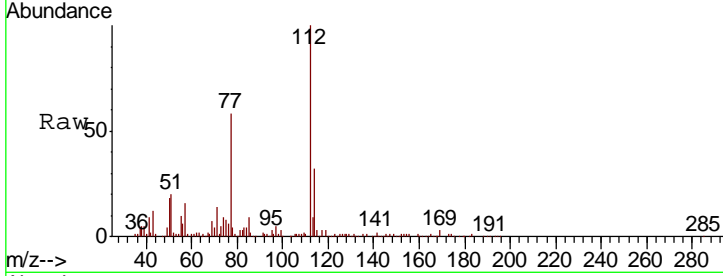




#65
 Chlorobenzene
 Concen: 153.061 ug/l
 RT: 11.66 min Scan# 1601
 Delta R.T. 0.01 min
 Lab File: VW007834.D
 Acq: 22 Dec 2018 10:58

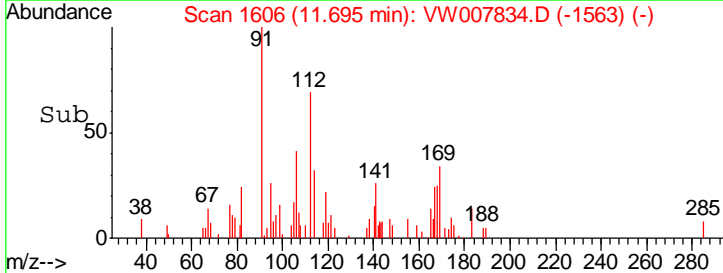
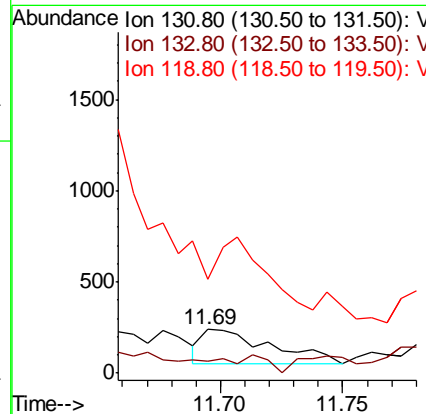
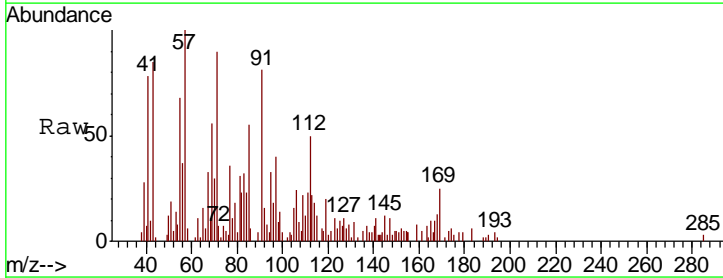
Instrument : MSVOA_W
 ClientSampleId : P001-SS013C-1824-01

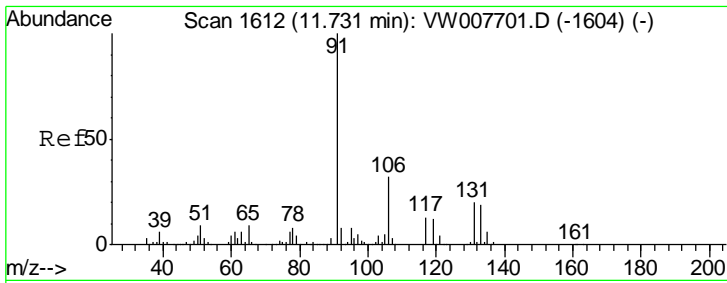
Tgt Ion	Resp	Lower	Upper
112	49488		
114	32.1	25.2	37.8



#66
 1,1,1,2-Tetrachloroethane
 Concen: 3.125 ug/l
 RT: 11.69 min Scan# 1606
 Delta R.T. -0.04 min
 Lab File: VW007834.D
 Acq: 22 Dec 2018 10:58

Tgt Ion	Resp	Lower	Upper
131	361		
133	0.0	47.5	142.5#
119	144.3	30.2	90.6#

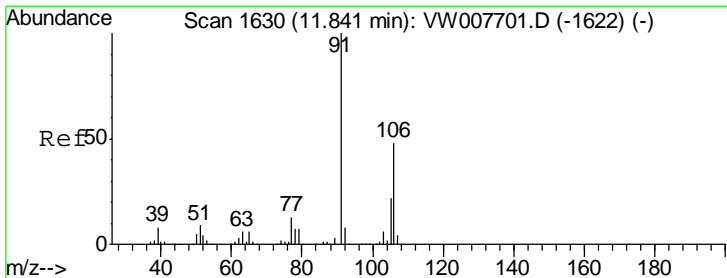
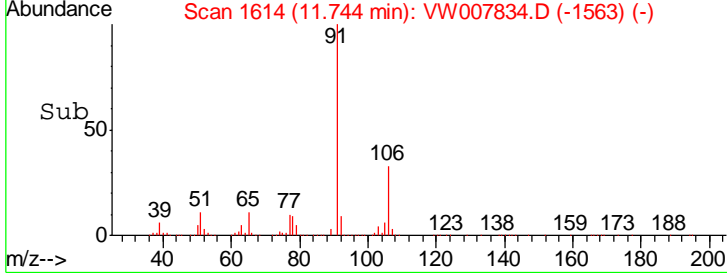
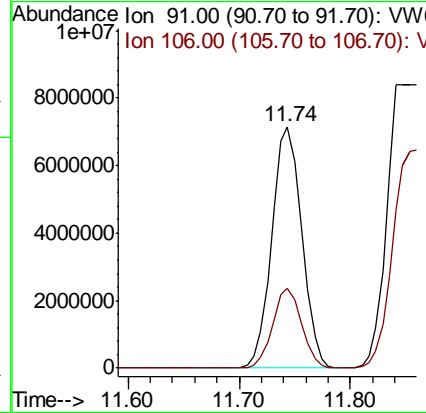
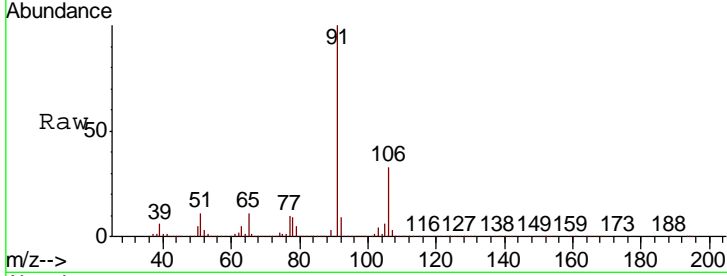




#67
 Ethyl Benzene
 Concen: 24147.866 ug/l
 RT: 11.74 min Scan# 1614
 Delta R.T. 0.01 min
 Lab File: VW007834.D
 Acq: 22 Dec 2018 10:58

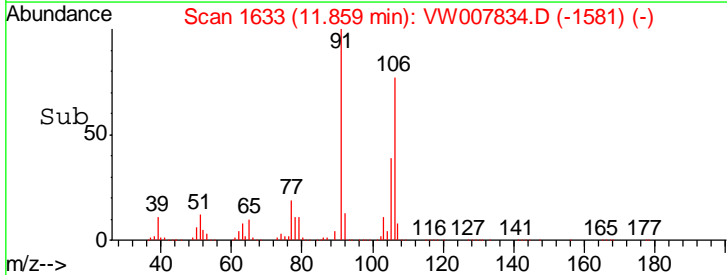
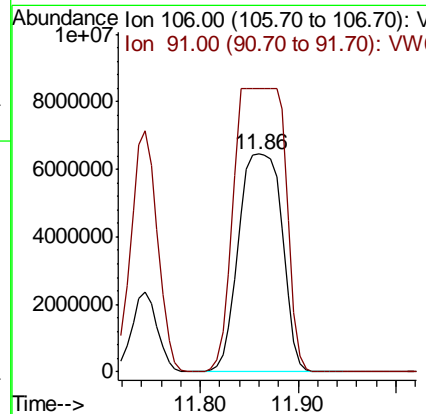
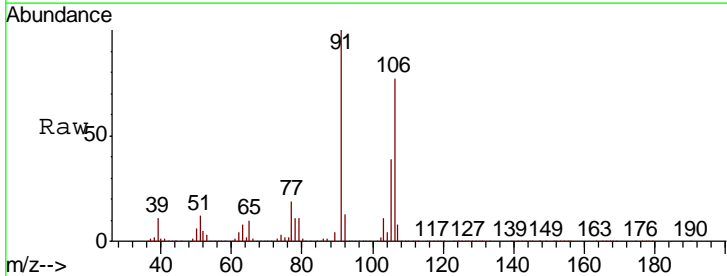
Instrument :
 MSVOA_W
ClientSampled :
 P001-SS013C-1824-01

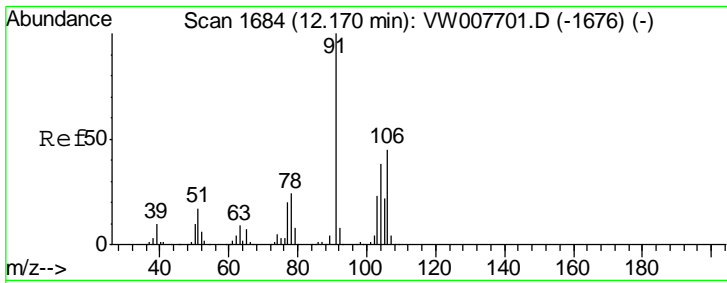
Tgt Ion: 91 Resp:13397700
 Ion Ratio Lower Upper
 91 100
 106 33.3 25.8 38.8



#68
 m/p-Xylenes
 Concen: 92778.824 ug/l
 RT: 11.86 min Scan# 1633
 Delta R.T. 0.02 min
 Lab File: VW007834.D
 Acq: 22 Dec 2018 10:58

Tgt Ion:106 Resp:19968088
 Ion Ratio Lower Upper
 106 100
 91 0.0 165.2 247.8#

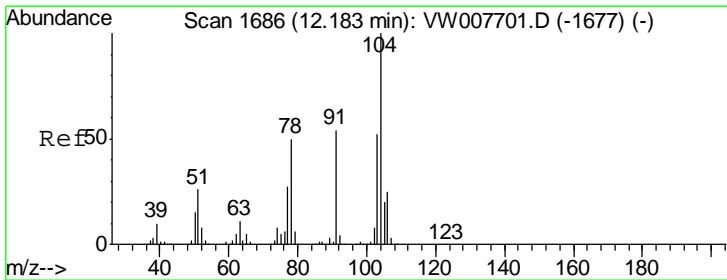
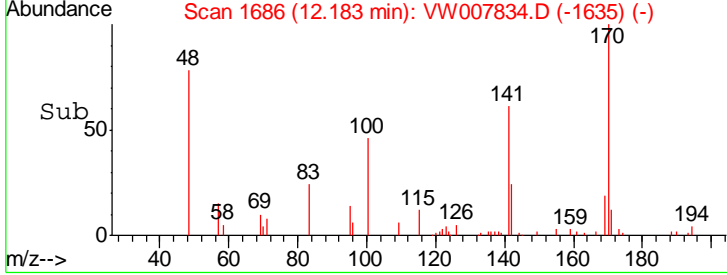
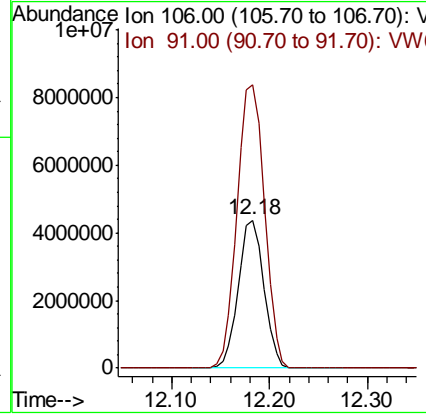
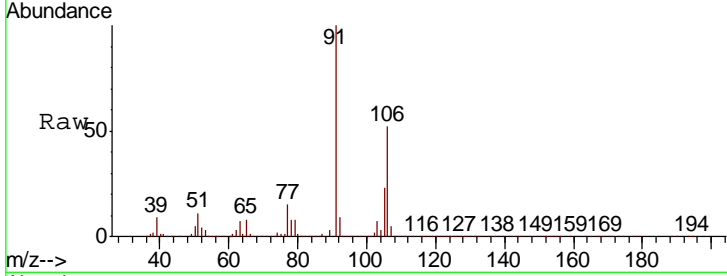




#69
 o-Xylene
 Concen: 39489.562 ug/l
 RT: 12.18 min Scan# 1686
 Delta R.T. 0.01 min
 Lab File: VW007834.D
 Acq: 22 Dec 2018 10:58

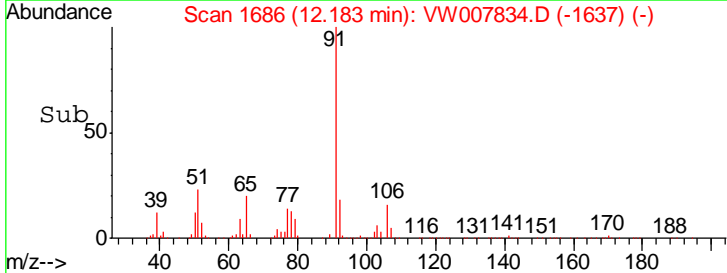
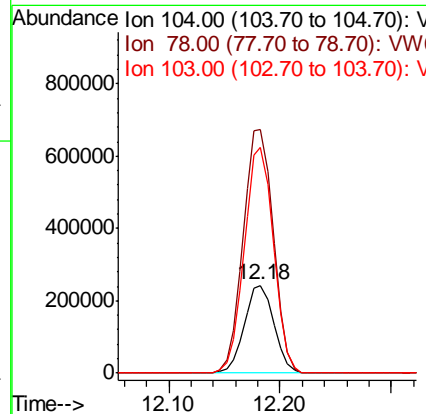
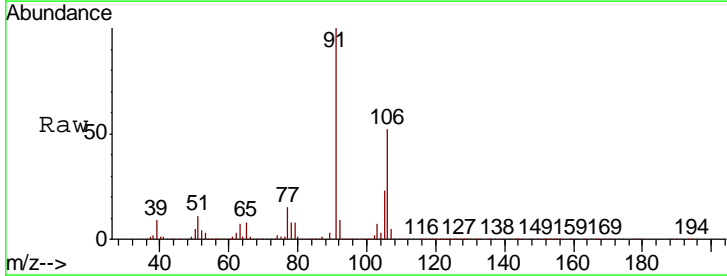
Instrument :
 MSVOA_W
Client Sampled :
 P001-SS013C-1824-01

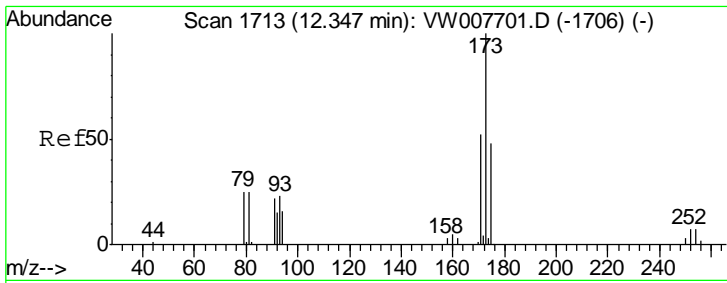
Tgt Ion:106 Resp: 7966761
 Ion Ratio Lower Upper
 106 100
 91 205.5 110.5 331.4



#70
 Styrene
 Concen: 1348.802 ug/l
 RT: 12.18 min Scan# 1686
 Delta R.T. -0.00 min
 Lab File: VW007834.D
 Acq: 22 Dec 2018 10:58

Tgt Ion:104 Resp: 447298
 Ion Ratio Lower Upper
 104 100
 78 282.9 43.4 65.0#
 103 254.8 44.5 66.7#

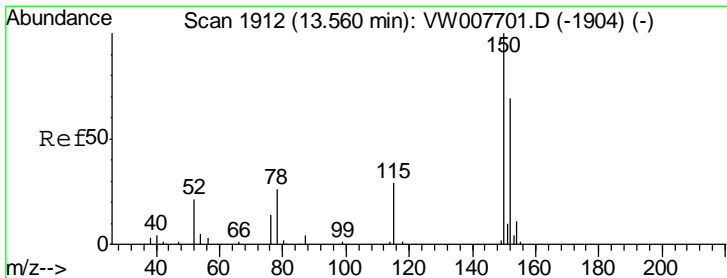
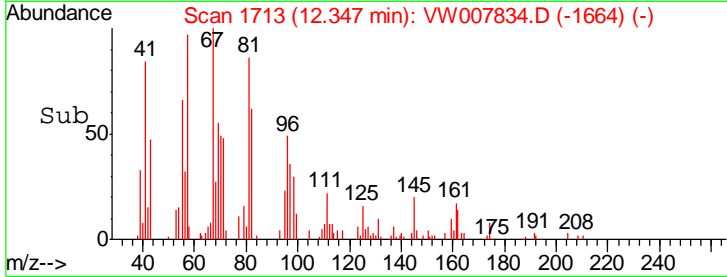
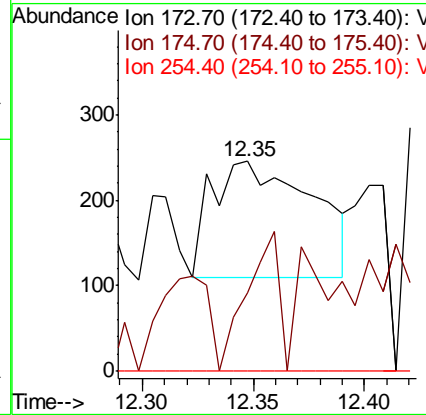
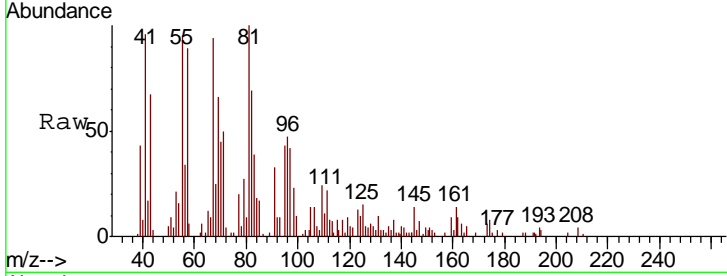




#71
 Bromoform
 Concen: 7.153 ug/l
 RT: 12.35 min Scan# 1713
 Delta R.T. -0.00 min
 Lab File: VW007834.D
 Acq: 22 Dec 2018 10:58

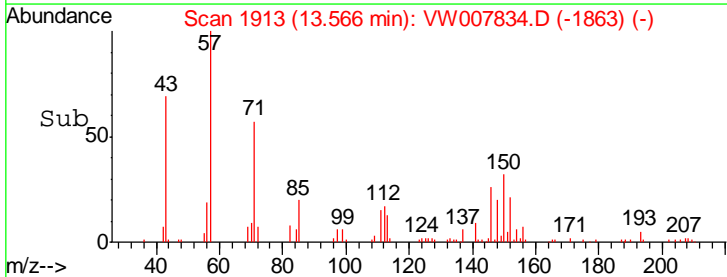
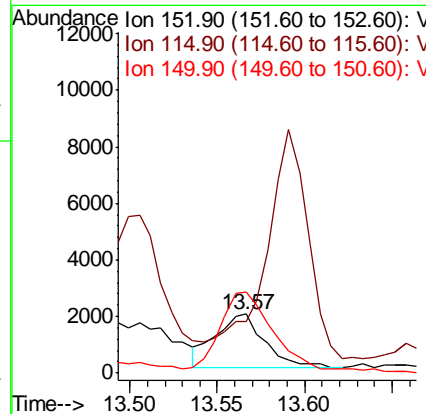
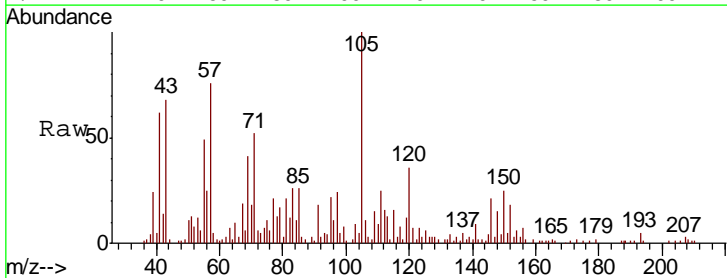
Instrument :
 MSVOA_W
 ClientSampled :
 P001-SS013C-1824-01

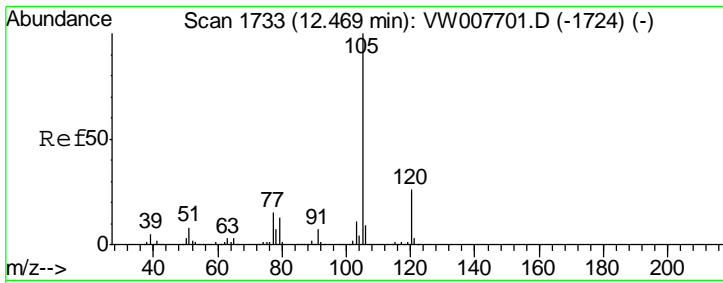
Tgt Ion	Resp	Lower	Upper
173	100		
175	38.0	23.9	71.7
254	0.0	0.0	0.0



#72
 1,4-Dichlorobenzene-d4
 Concen: 50.000 ug/l
 RT: 13.57 min Scan# 1913
 Delta R.T. 0.01 min
 Lab File: VW007834.D
 Acq: 22 Dec 2018 10:58

Tgt Ion	Resp	Lower	Upper
152	100		
115	0.0	31.8	95.4#
150	142.0	0.0	350.8

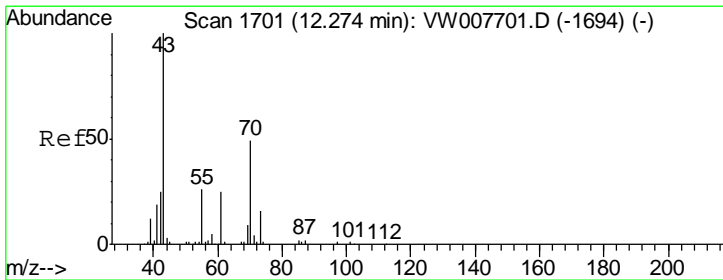
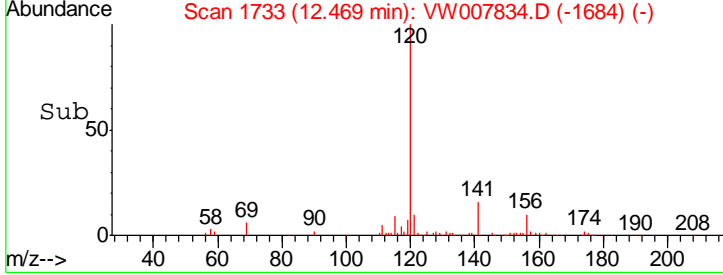
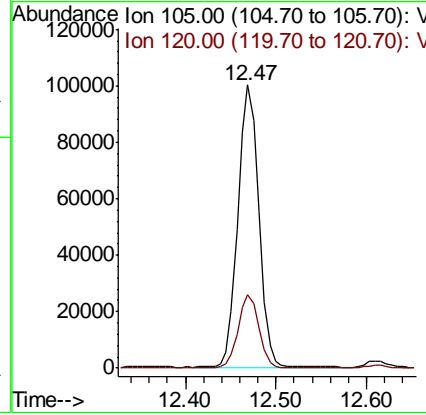
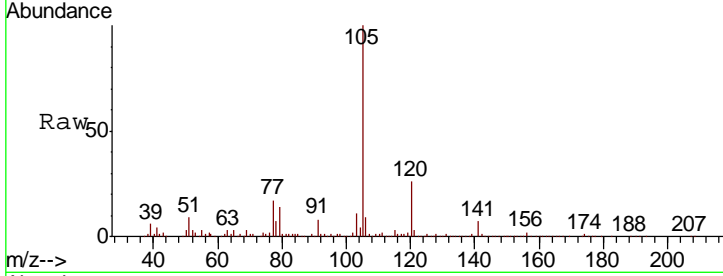




#73
 Isopropylbenzene
 Concen: 561.716 ug/l
 RT: 12.47 min Scan# 1733
 Delta R.T. -0.00 min
 Lab File: VW007834.D
 Acq: 22 Dec 2018 10:58

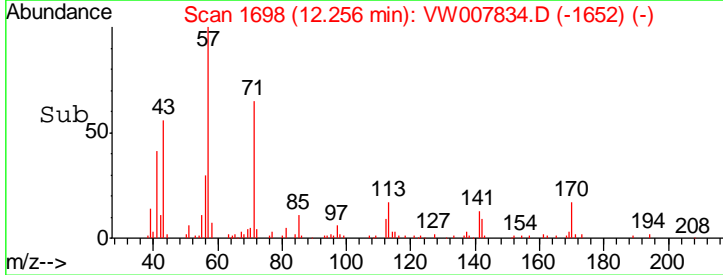
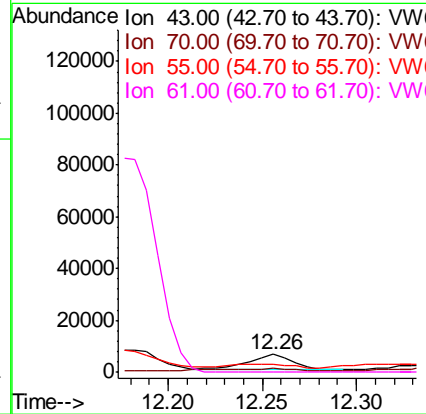
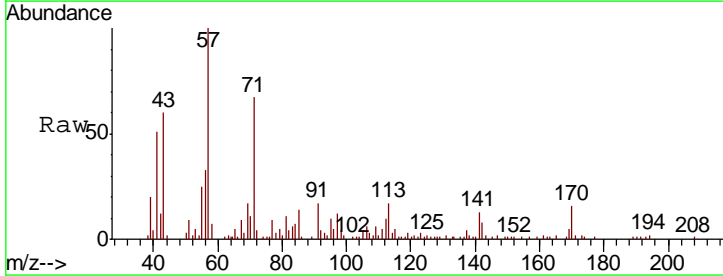
Instrument : MSVOA_W
 ClientSampleId : P001-SS013C-1824-01

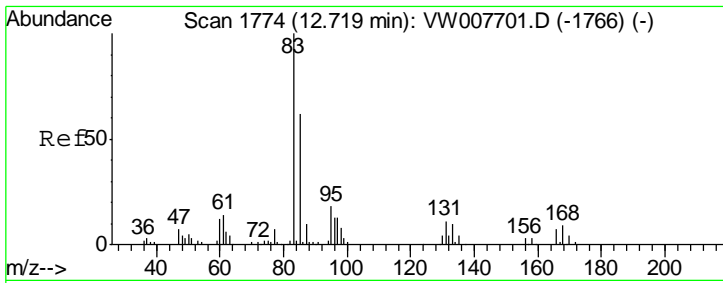
Tgt Ion	Resp	Lower	Upper
105	100		
120	26.1	13.1	39.3



#74
 N-nyl acetate
 Concen: 194.018 ug/l
 RT: 12.26 min Scan# 1698
 Delta R.T. -0.02 min
 Lab File: VW007834.D
 Acq: 22 Dec 2018 10:58

Tgt Ion	Resp	Lower	Upper
43	100		
70	25.1	37.6	56.4#
55	34.0	21.7	32.5#
61	0.0	20.1	30.1#

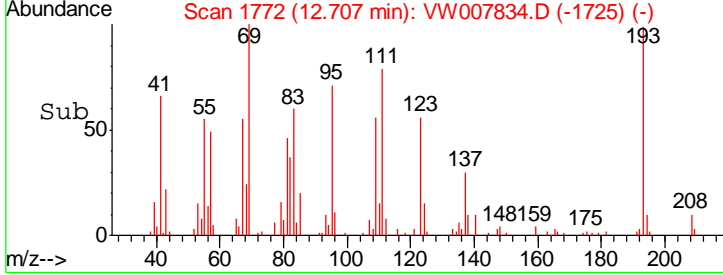
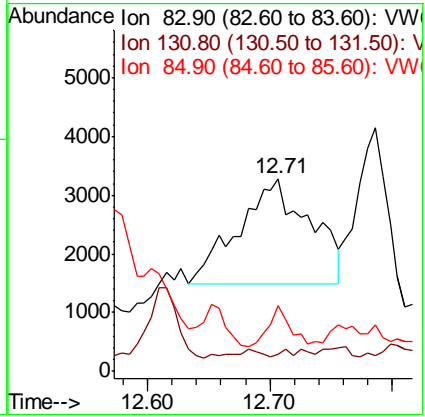
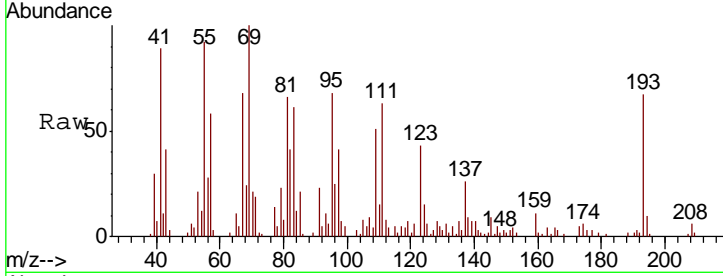




#75
 1,1,2,2-Tetrachloroethane
 Concen: 167.565 ug/l
 RT: 12.71 min Scan# 1772
 Delta R.T. -0.01 min
 Lab File: VW007834.D
 Acq: 22 Dec 2018 10:58

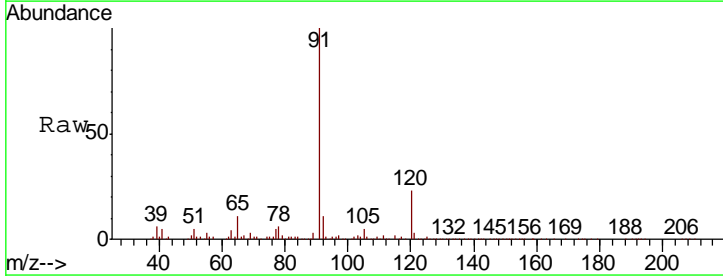
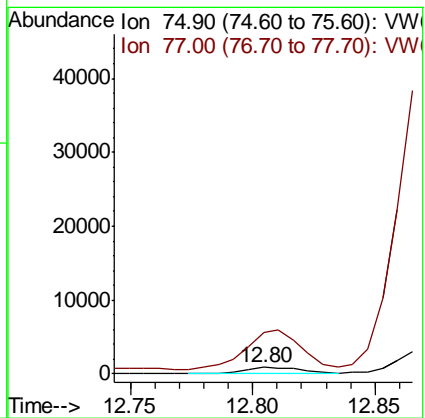
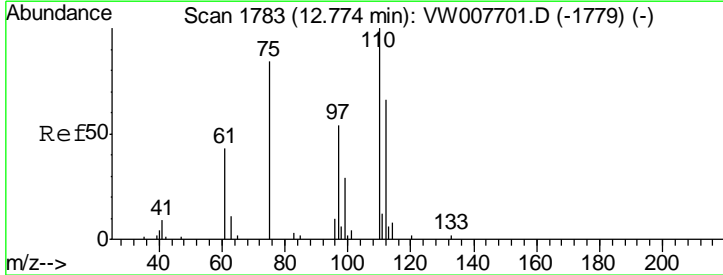
Instrument :
 MSVOA_W
ClientSampleId :
 P001-SS013C-1824-01

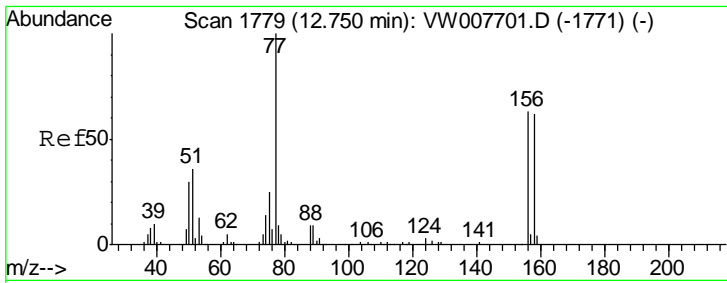
Tgt Ion	Resp	Lower	Upper
83	100		
131	0.0	6.3	18.8#
85	12.0	32.3	96.8#



#76
 1,2,3-Trichloropropane
 Concen: 48.813 ug/l
 RT: 12.80 min Scan# 1788
 Delta R.T. 0.03 min
 Lab File: VW007834.D
 Acq: 22 Dec 2018 10:58

Tgt Ion	Resp	Lower	Upper
75	100		
77	589.9	0.0	0.0#

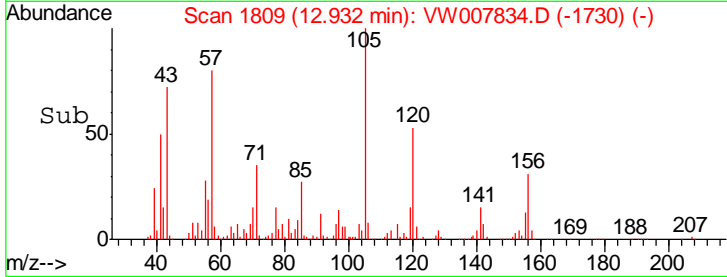
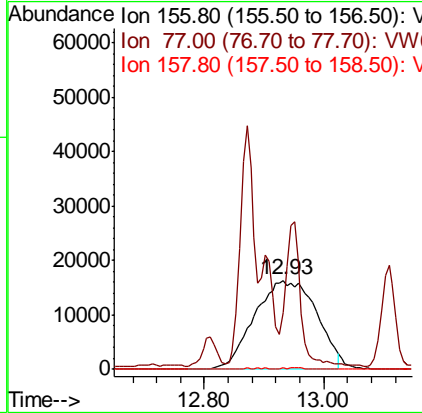
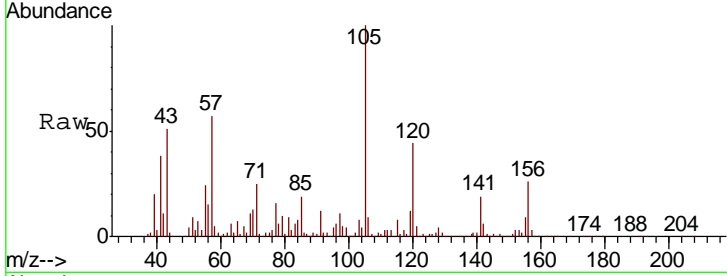




#77
 Bromobenzene
 Concen: 1792.037 ug/l
 RT: 12.93 min Scan# 1809
 Delta R.T. 0.18 min
 Lab File: VW007834.D
 Acq: 22 Dec 2018 10:58

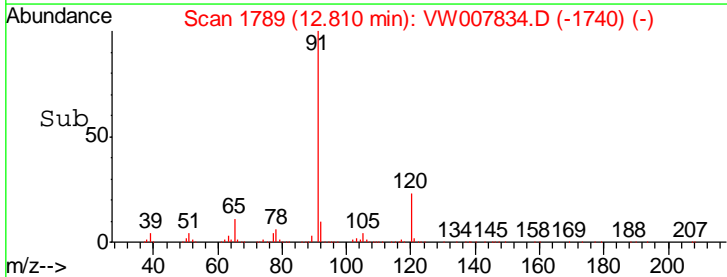
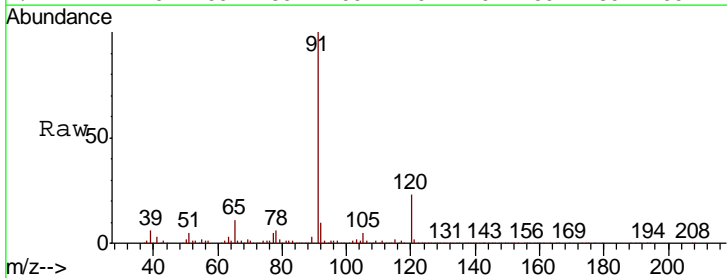
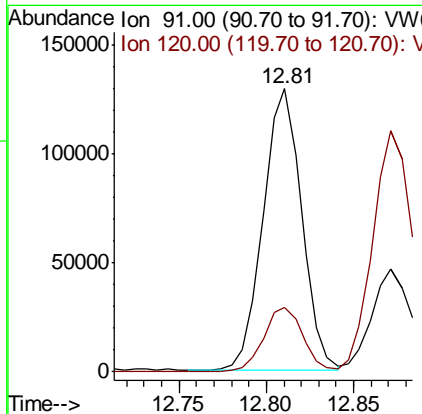
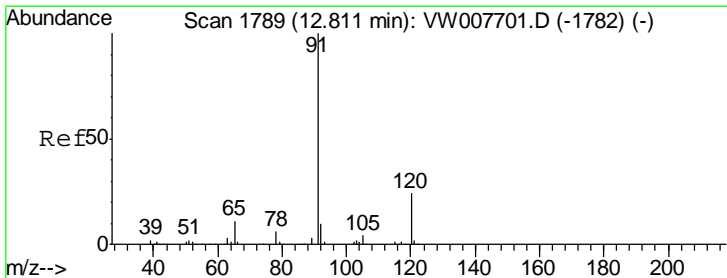
Instrument : MSVOA_W
 ClientSampleId : P001-SS013C-1824-01

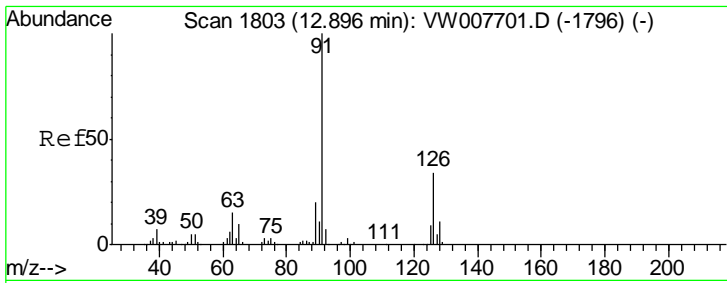
Tgt Ion	Resp	Lower	Upper
156	117500		
77	0.0	87.4	262.1#
158	0.0	48.4	145.0#



#78
 n-propylbenzene
 Concen: 595.178 ug/l
 RT: 12.81 min Scan# 1789
 Delta R.T. -0.00 min
 Lab File: VW007834.D
 Acq: 22 Dec 2018 10:58

Tgt Ion	Resp	Lower	Upper
91	198220		
120	23.3	11.9	35.7

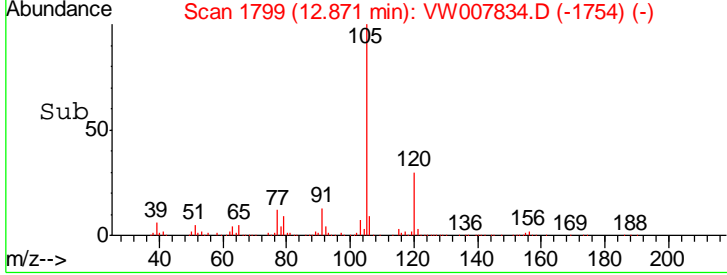
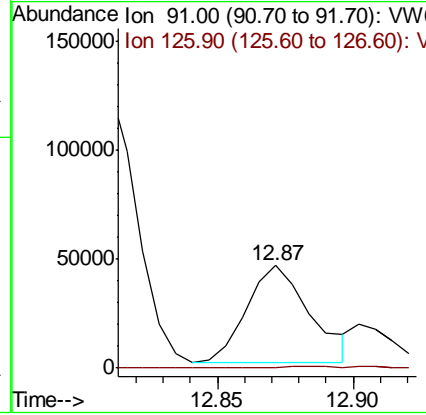
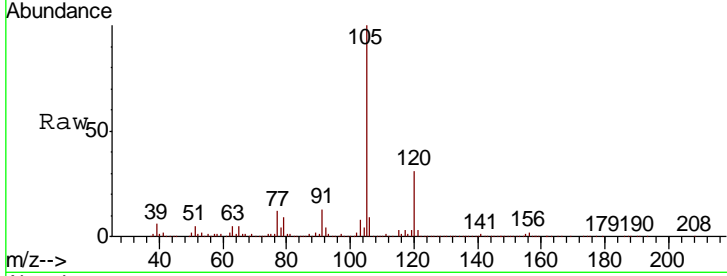




#79
 2-Chlorotoluene
 Concen: 369.794 ug/l
 RT: 12.87 min Scan# 1799
 Delta R.T. -0.02 min
 Lab File: VW007834.D
 Acq: 22 Dec 2018 10:58

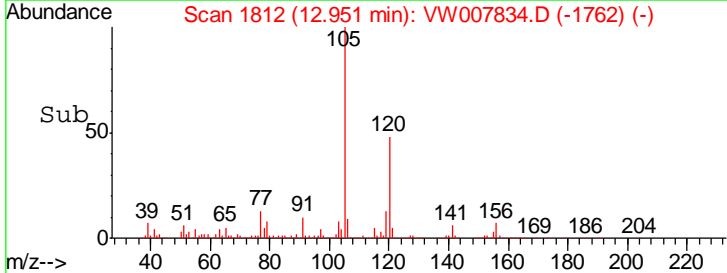
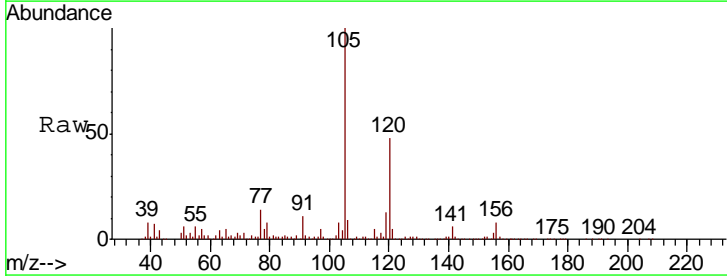
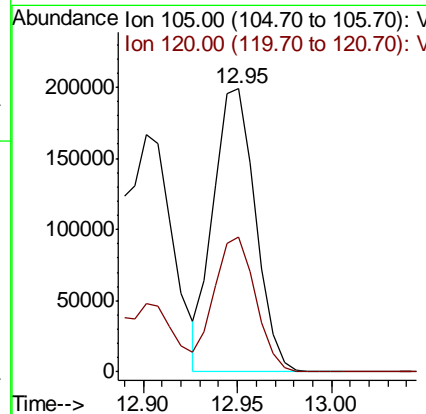
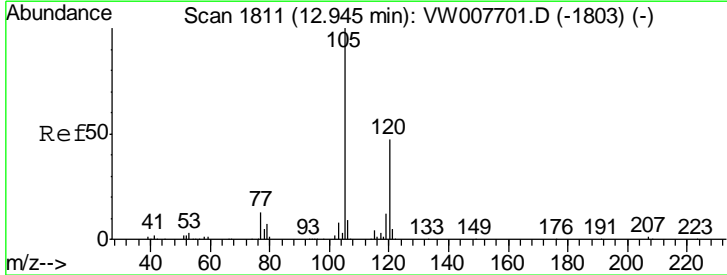
Instrument : MSVOA_W
 ClientSampled : P001-SS013C-1824-01

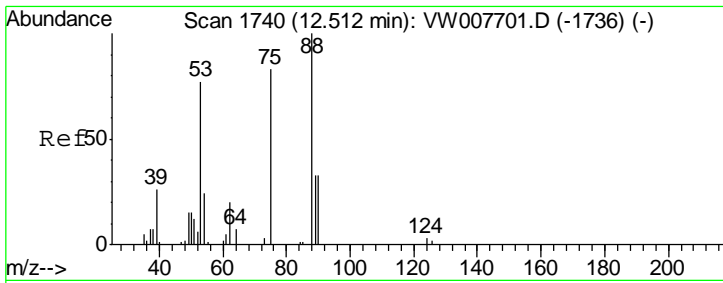
Tgt Ion: 91 Resp: 71745
 Ion Ratio Lower Upper
 91 100
 126 2.1 17.0 51.0#



#80
 1,3,5-Trimethylbenzene
 Concen: 1243.965 ug/l
 RT: 12.95 min Scan# 1812
 Delta R.T. 0.01 min
 Lab File: VW007834.D
 Acq: 22 Dec 2018 10:58

Tgt Ion: 105 Resp: 306992
 Ion Ratio Lower Upper
 105 100
 120 47.1 23.6 70.8

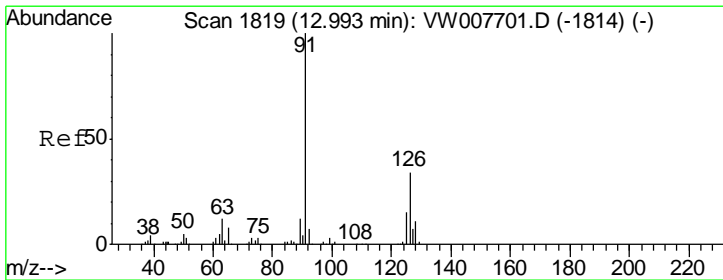
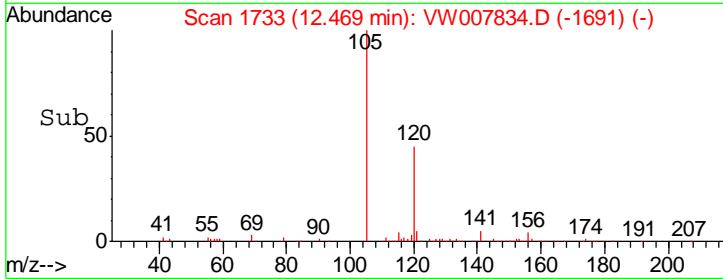
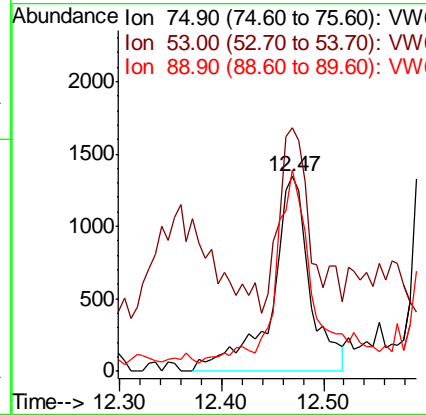
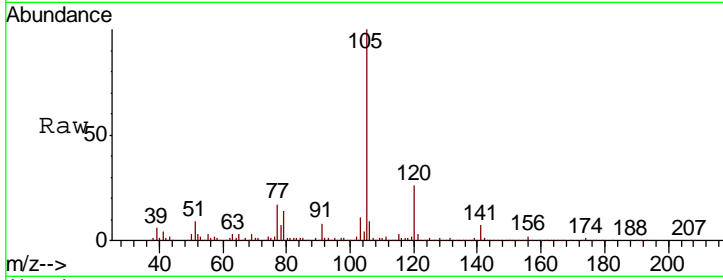




#81
 trans-1,4-Dichloro-2-butene
 Concen: 249.052 ug/l
 RT: 12.47 min Scan# 1733
 Delta R.T. -0.04 min
 Lab File: VW007834.D
 Acq: 22 Dec 2018 10:58

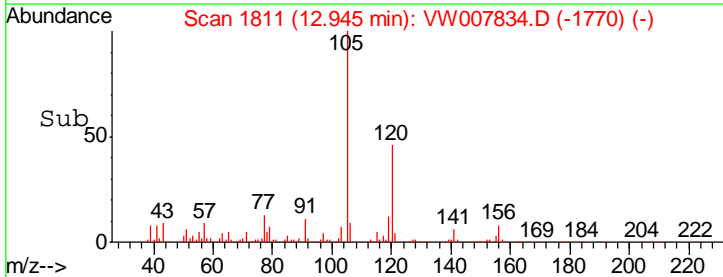
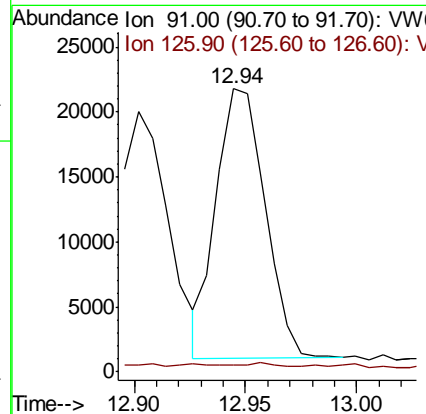
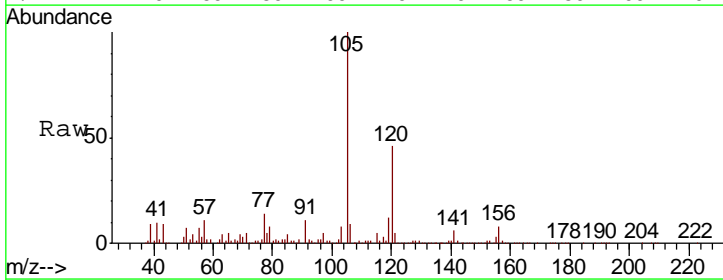
Instrument : MSVOA_W
 ClientSampled : P001-SS013C-1824-01

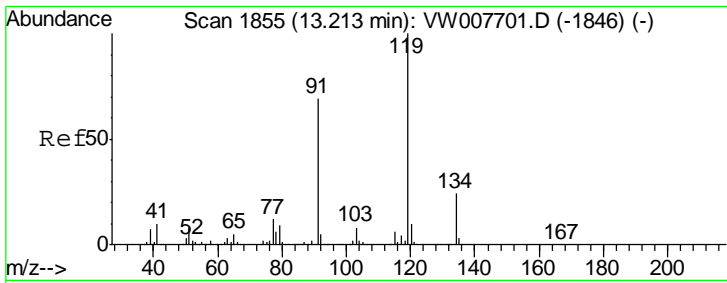
Tgt Ion	Resp	Lower	Upper
75	100		
53	70.5	80.2	120.2#
89	90.5	39.2	58.8#



#82
 4-Chlorotoluene
 Concen: 153.346 ug/l
 RT: 12.94 min Scan# 1811
 Delta R.T. -0.05 min
 Lab File: VW007834.D
 Acq: 22 Dec 2018 10:58

Tgt Ion	Resp	Lower	Upper
91	100		
126	0.3	16.5	49.5#

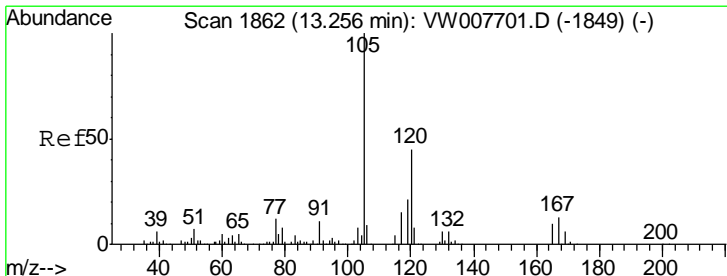
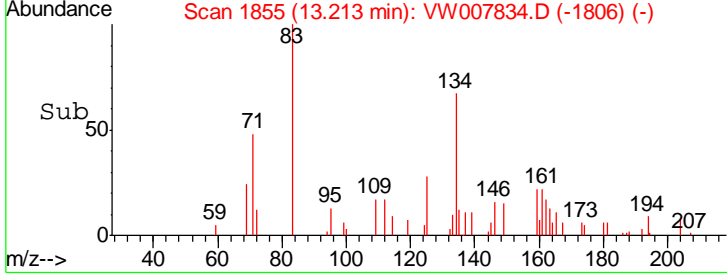
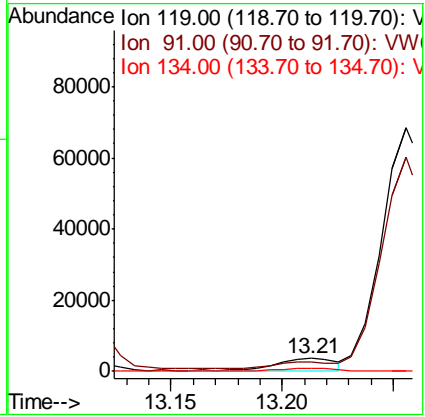
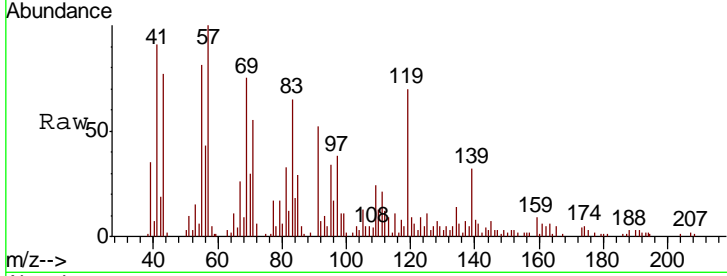




#83
 tert-Butylbenzene
 Concen: 28.573 ug/l
 RT: 13.21 min Scan# 1855
 Delta R.T. -0.00 min
 Lab File: VW007834.D
 Acq: 22 Dec 2018 10:58

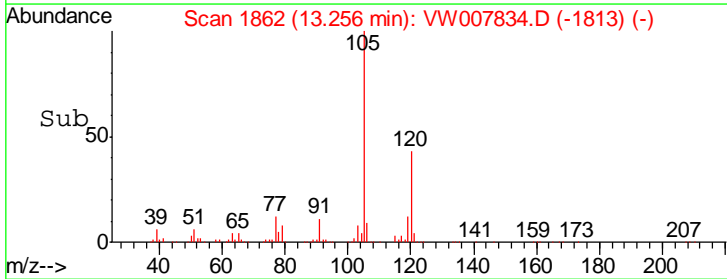
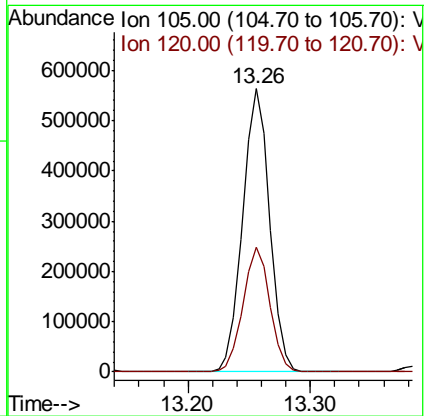
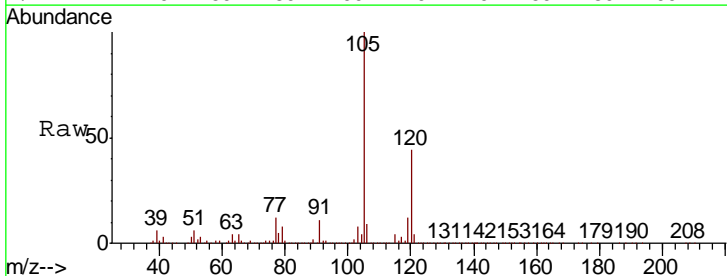
Instrument : MSVOA_W
 ClientSampled : P001-SS013C-1824-01

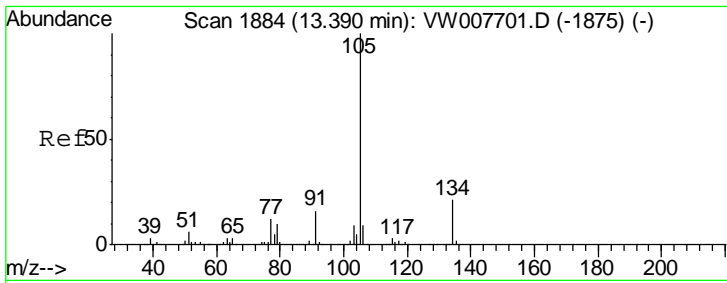
Tgt Ion	Resp	Lower	Upper
119	100		
91	0.0	34.2	102.5#
134	18.9	12.8	38.4



#84
 1,2,4-Trimethylbenzene
 Concen: 3445.812 ug/l
 RT: 13.26 min Scan# 1862
 Delta R.T. -0.00 min
 Lab File: VW007834.D
 Acq: 22 Dec 2018 10:58

Tgt Ion	Resp	Lower	Upper
105	100		
120	43.9	22.0	66.0

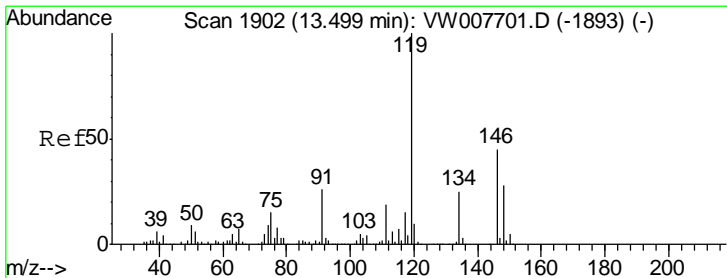
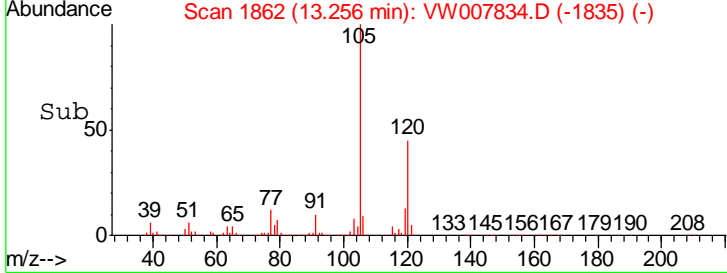
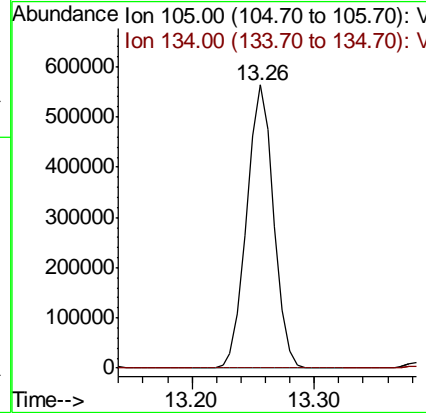
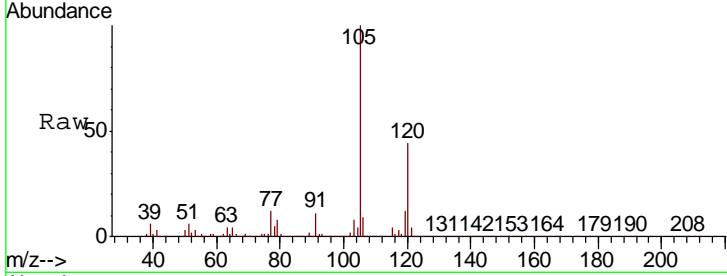




#85
 sec-Butylbenzene
 Concen: 2875.355 ug/l
 RT: 13.26 min Scan# 1862
 Delta R.T. -0.13 min
 Lab File: VW007834.D
 Acq: 22 Dec 2018 10:58

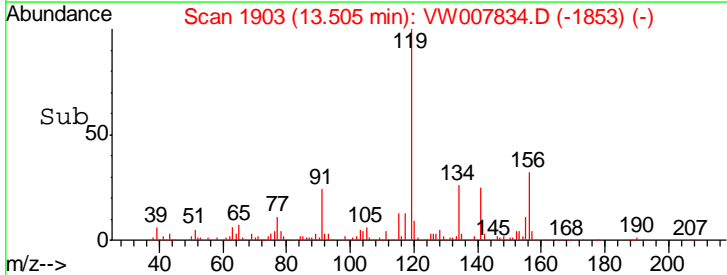
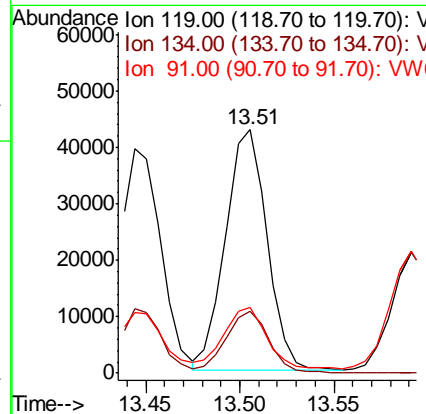
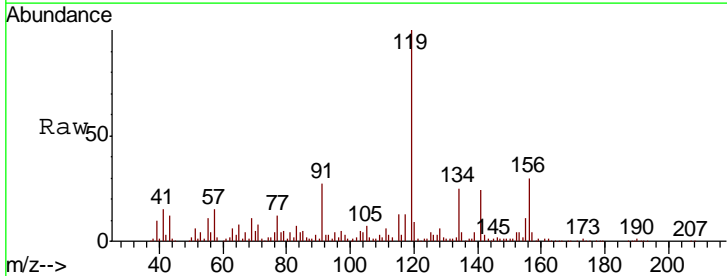
Instrument : MSVOA_W
 ClientSampleId : P001-SS013C-1824-01

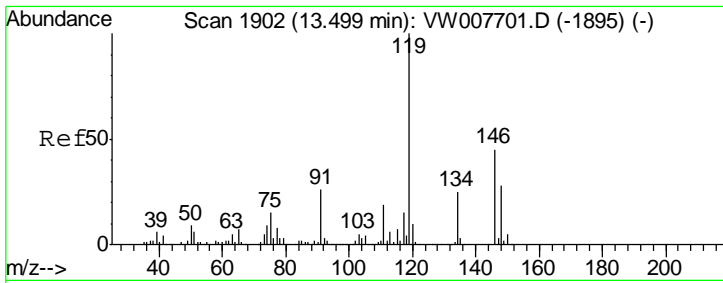
Tgt Ion	Resp	Lower	Upper
105	100		
134	0.0	10.2	30.4#



#86
 p-Isopropyltoluene
 Concen: 238.818 ug/l
 RT: 13.51 min Scan# 1903
 Delta R.T. 0.01 min
 Lab File: VW007834.D
 Acq: 22 Dec 2018 10:58

Tgt Ion	Resp	Lower	Upper
119	100		
134	26.1	13.0	39.0
91	25.1	12.8	38.4

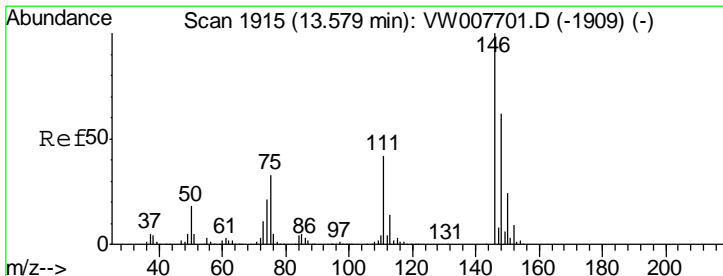
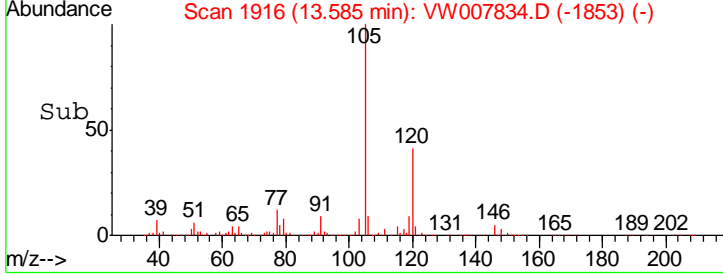
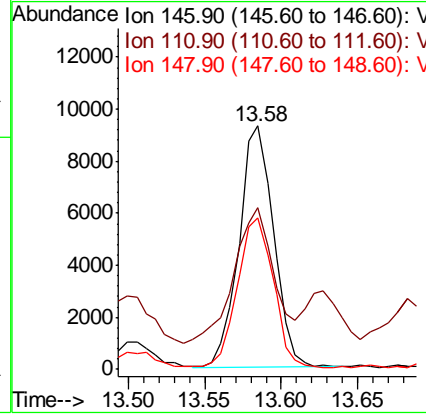
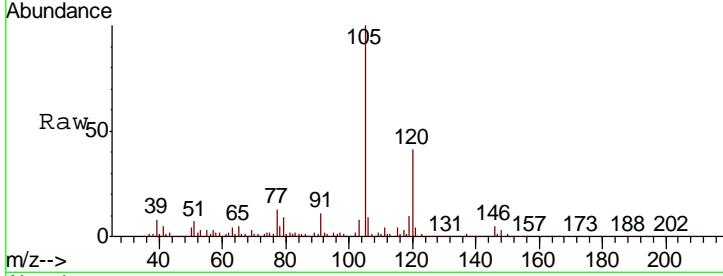




#87
 1,3-Dichlorobenzene
 Concen: 112.387 ug/l
 RT: 13.58 min Scan# 1916
 Delta R.T. 0.09 min
 Lab File: VW007834.D
 Acq: 22 Dec 2018 10:58

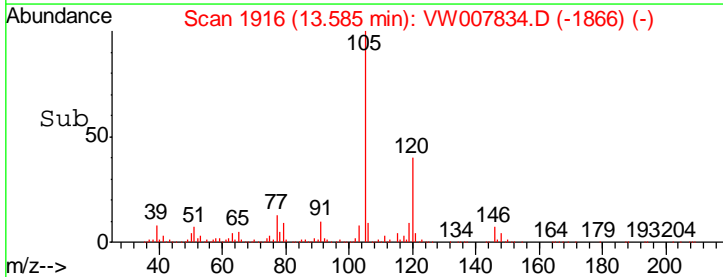
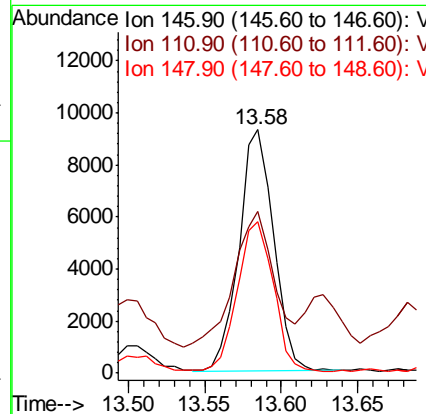
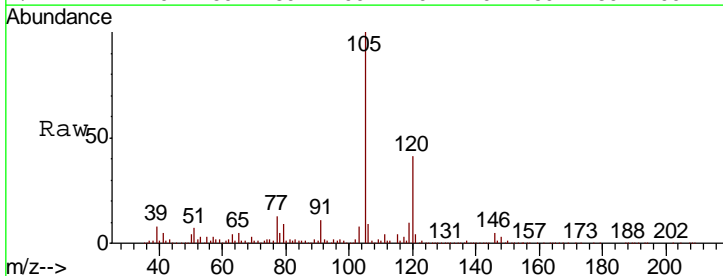
Instrument :
 MSVOA_W
 ClientSampled :
 P001-SS013C-1824-01

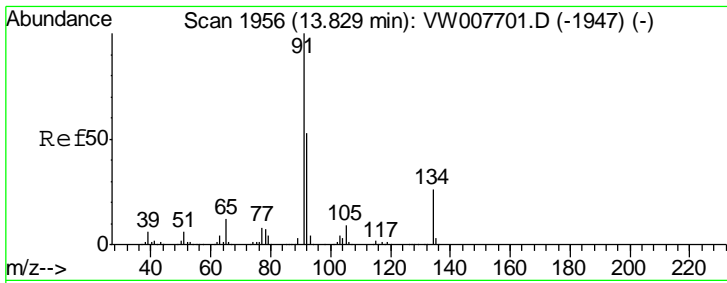
Tgt Ion	Resp	Lower	Upper
146	100		
111	63.3	21.1	63.4
148	64.8	32.1	96.5



#88
 1,4-Dichlorobenzene
 Concen: 112.354 ug/l
 RT: 13.58 min Scan# 1916
 Delta R.T. 0.01 min
 Lab File: VW007834.D
 Acq: 22 Dec 2018 10:58

Tgt Ion	Resp	Lower	Upper
146	100		
111	63.3	21.0	63.0#
148	64.8	31.8	95.4

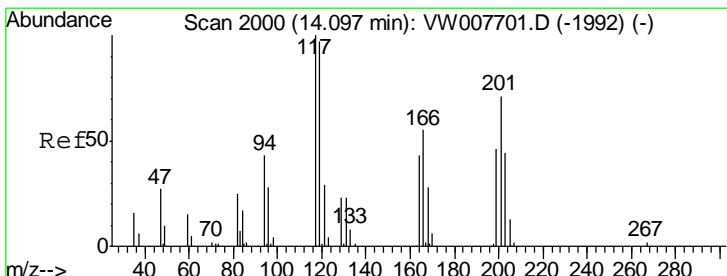
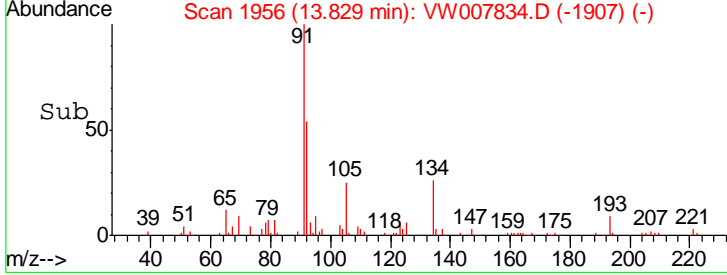
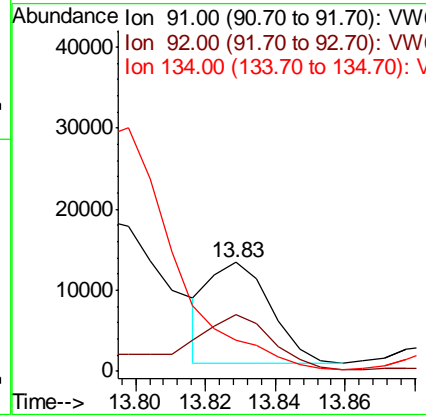
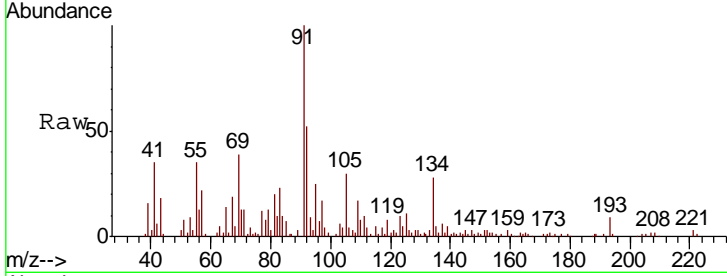




#89
 n-Butylbenzene
 Concen: 60.807 ug/l
 RT: 13.83 min Scan# 1956
 Delta R.T. -0.00 min
 Lab File: VW007834.D
 Acq: 22 Dec 2018 10:58

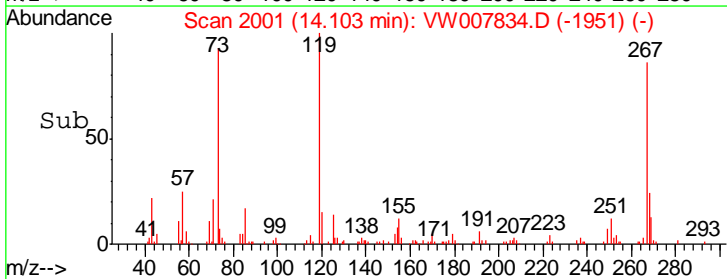
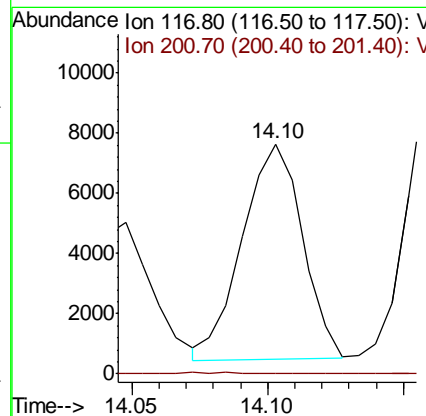
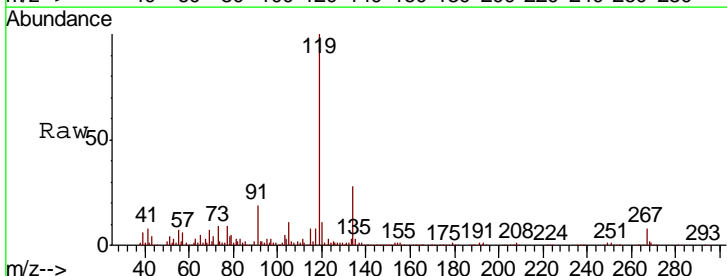
Instrument : MSVOA_W
 ClientSampleId : P001-SS013C-1824-01

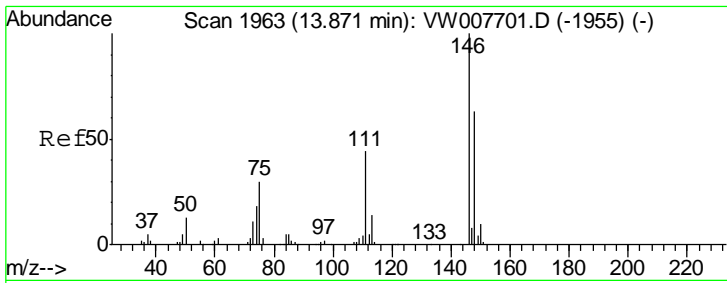
Tgt Ion	Resp	Lower	Upper
91	15129		
92	83.5	26.4	79.2#
134	0.0	13.7	41.0#



#90
 Hexachloroethane
 Concen: 229.301 ug/l
 RT: 14.10 min Scan# 2001
 Delta R.T. 0.01 min
 Lab File: VW007834.D
 Acq: 22 Dec 2018 10:58

Tgt Ion	Resp	Lower	Upper
117	10924		
201	0.0	36.2	108.6#

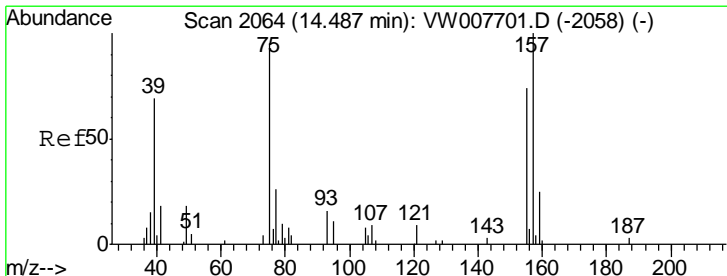
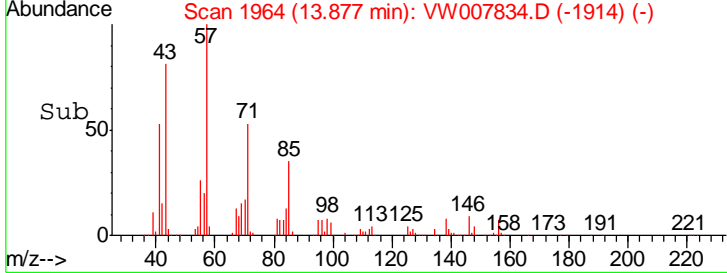
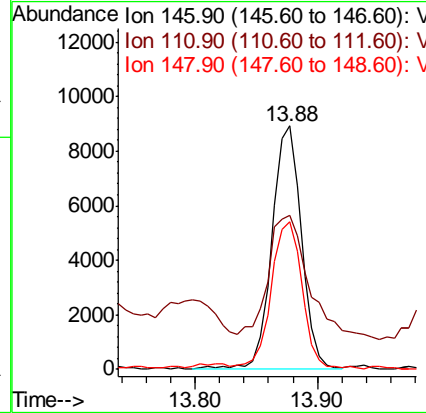
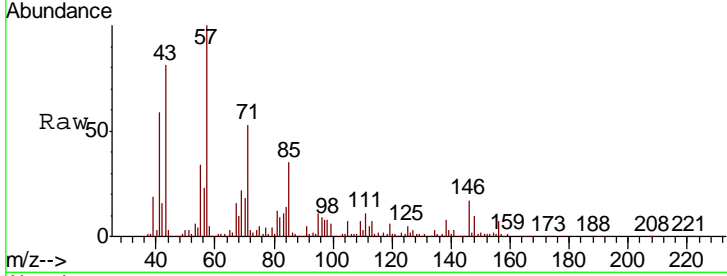




#91
 1,2-Dichlorobenzene
 Concen: 128.793 ug/l
 RT: 13.88 min Scan# 1964
 Delta R.T. 0.01 min
 Lab File: VW007834.D
 Acq: 22 Dec 2018 10:58

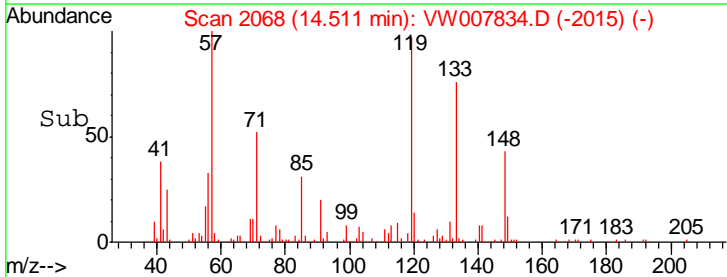
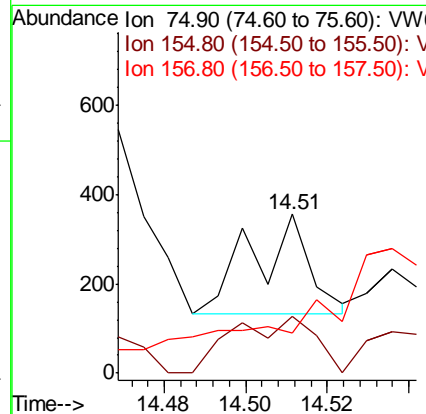
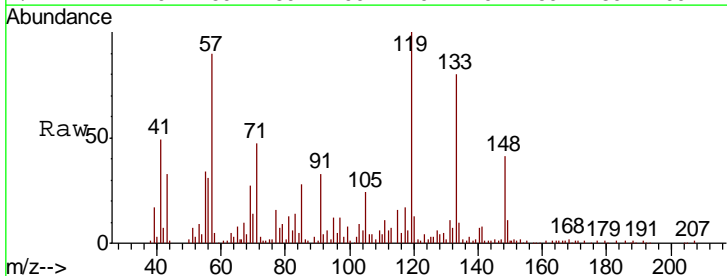
Instrument : MSVOA_W
 ClientSampleId : P001-SS013C-1824-01

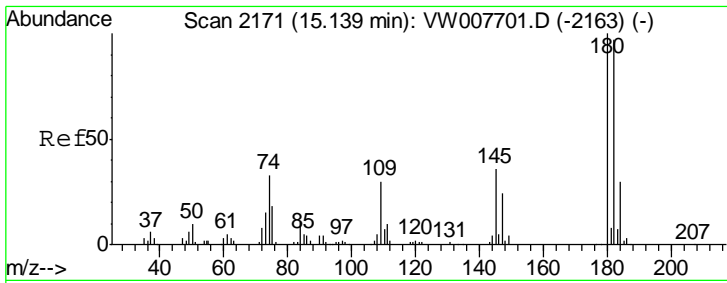
Tgt Ion	Resp	Lower	Upper
146	15012		
111	71.9	21.7	65.1#
148	63.9	32.1	96.5



#92
 1,2-Dibromo-3-Chloropropane
 Concen: 25.427 ug/l
 RT: 14.51 min Scan# 2068
 Delta R.T. 0.02 min
 Lab File: VW007834.D
 Acq: 22 Dec 2018 10:58

Tgt Ion	Resp	Lower	Upper
75	224		
75	100		
155	78.1	39.4	118.1
157	0.0	52.0	156.0#

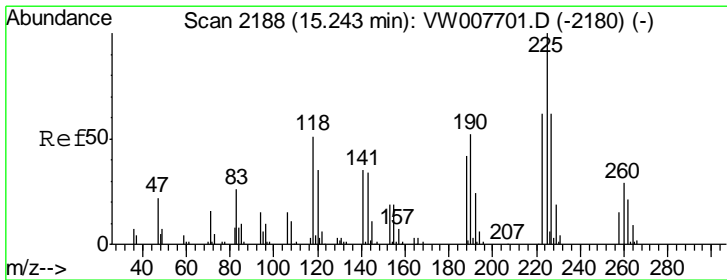
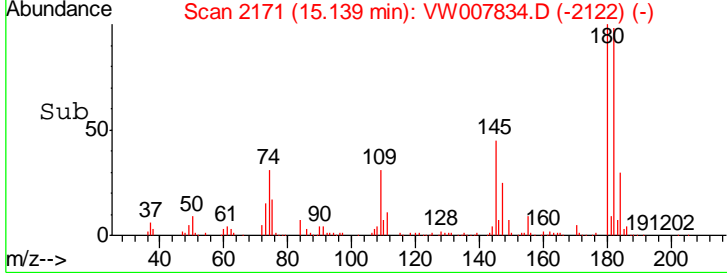
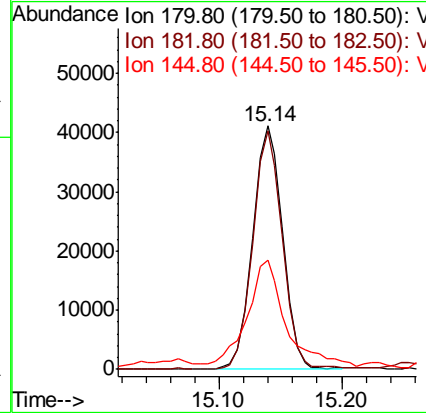
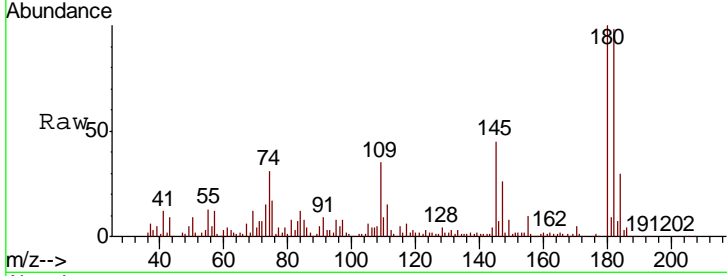




#93
 1,2,4-Trichlorobenzene
 Concen: 858.643 ug/l
 RT: 15.14 min Scan# 2171
 Delta R.T. -0.00 min
 Lab File: VW007834.D
 Acq: 22 Dec 2018 10:58

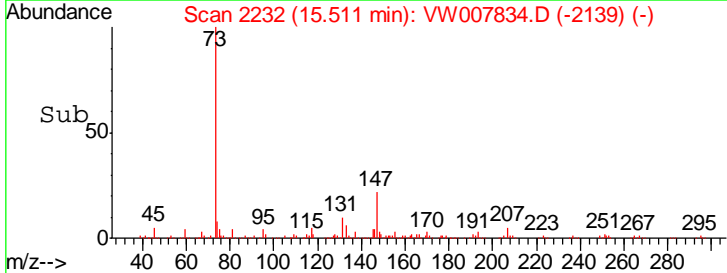
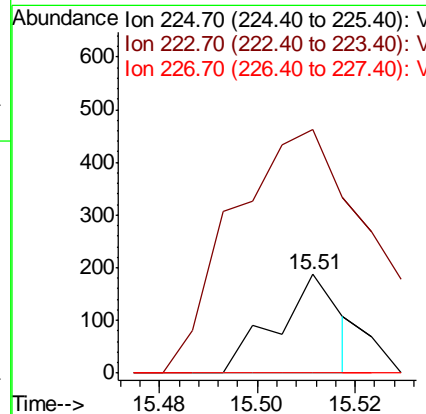
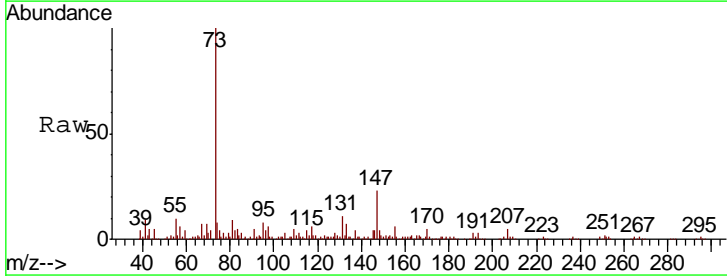
Instrument : MSVOA_W
 ClientSampled : P001-SS013C-1824-01

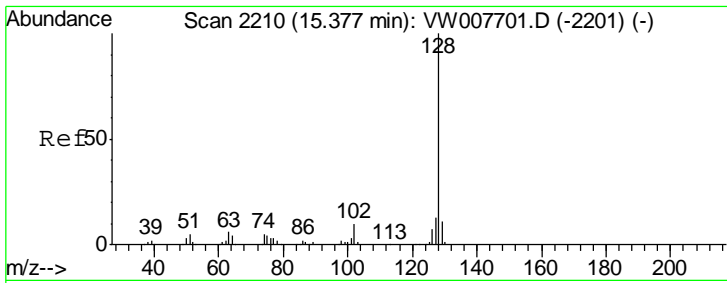
Tgt Ion	Resp	Lower	Upper
180	100		
182	97.0	47.5	142.6
145	58.9	17.5	52.5#



#94
 Hexachlorobutadiene
 Concen: 3.885 ug/l
 RT: 15.51 min Scan# 2232
 Delta R.T. 0.27 min
 Lab File: VW007834.D
 Acq: 22 Dec 2018 10:58

Tgt Ion	Resp	Lower	Upper
225	100		
223	423.2	31.6	94.8#
227	0.0	32.1	96.3#

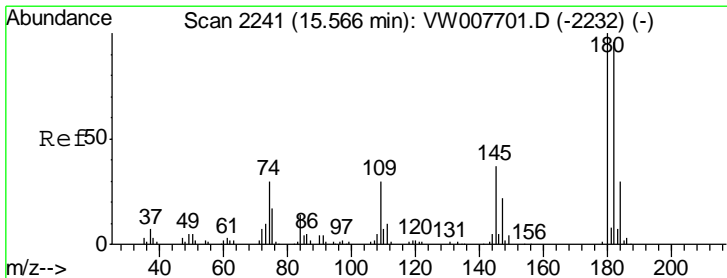
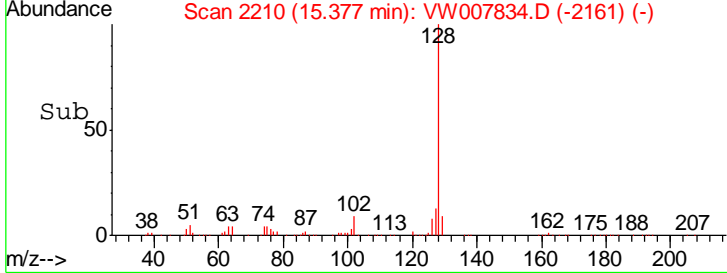
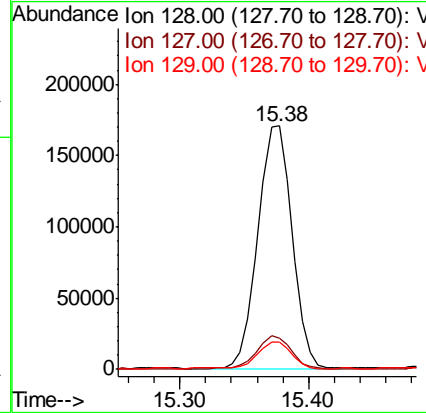
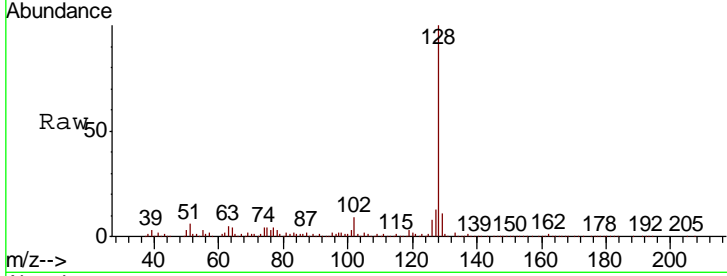




#95
 Naphthalene
 Concen: 2083.218 ug/l
 RT: 15.38 min Scan# 2210
 Delta R.T. -0.00 min
 Lab File: VW007834.D
 Acq: 22 Dec 2018 10:58

Instrument : MSVOA_W
 ClientSampled : P001-SS013C-1824-01

Tgt Ion	Resp	Lower	Upper
128	311623		
127	13.6	10.7	16.1
129	10.9	8.8	13.2



#96
 1,2,3-Trichlorobenzene
 Concen: 229.286 ug/l
 RT: 15.57 min Scan# 2241
 Delta R.T. -0.00 min
 Lab File: VW007834.D
 Acq: 22 Dec 2018 10:58

Tgt Ion	Resp	Lower	Upper
180	15880		
182	87.8	47.4	142.2
145	142.7	18.4	55.0#

