

Data Path : Z:\VOASRV\HPCHEM1\MSVOA W\DATA\VW122318\
 Data File : VW007805.D
 Acq On : 21 Dec 2018 19:49
 Operator : SY/AP
 Sample : J6392-05RE
 Misc : 6.55G/5ML/MSVOA W/SOIL
 ALS Vial : 10 Sample Multiplier: 1

Instrument :
 MSVOA_W
ClientSampleId :
 KY001SB103-121118-(7-9)RE

Manual Integrations
APPROVED
 MMDadoda
 12/26/2018 10:59:12 AM

Quant Time: Dec 22 02:49:25 2018
 Quant Method : Z:\VOASRV\HPCHEM1\MSVOA_W\METHOD\82W122118S.M
 Quant Title : SW846 8260
 QLast Update : Thu Dec 20 06:30:23 2018
 Response via : Initial Calibration

Internal Standards	R.T.	QIon	Response	Conc	Units	Dev(Min)
1) Pentafluorobenzene	7.95	168	44076	50.00	ug/l	0.00
34) 1,4-Difluorobenzene	8.84	114	56576	50.00	ug/l	0.00
63) Chlorobenzene-d5	11.63	117	28660	50.00	ug/l	0.00
72) 1,4-Dichlorobenzene-d4	13.57	152	8111	50.00	ug/l	0.00
System Monitoring Compounds						
33) 1,2-Dichloroethane-d4	8.31	65	21506	44.52	ug/l	0.00
Spiked Amount	50.000		Recovery	=	89.04%	
35) Dibromofluoromethane	7.88	113	19511	56.53	ug/l	0.00
Spiked Amount	50.000		Recovery	=	113.06%	
50) Toluene-d8	10.32	98	57065	43.86	ug/l	0.00
Spiked Amount	50.000		Recovery	=	87.72%	
62) 4-Bromofluorobenzene	12.62	95	12415	24.70	ug/l	0.00
Spiked Amount	50.000		Recovery	=	49.40%	
Target Compounds						
16) Acetone	4.12	43	7157	79.115	ug/l	99
19) Methyl tert-butyl Ether	5.41	73	1849m	2.962	ug/l	
68) m/p-Xylenes	11.84	106	930	2.252	ug/l	85
84) 1,2,4-Trimethylbenzene	13.26	105	1617	3.030	ug/l	97

(#) = qualifier out of range (m) = manual integration (+) = signals summed

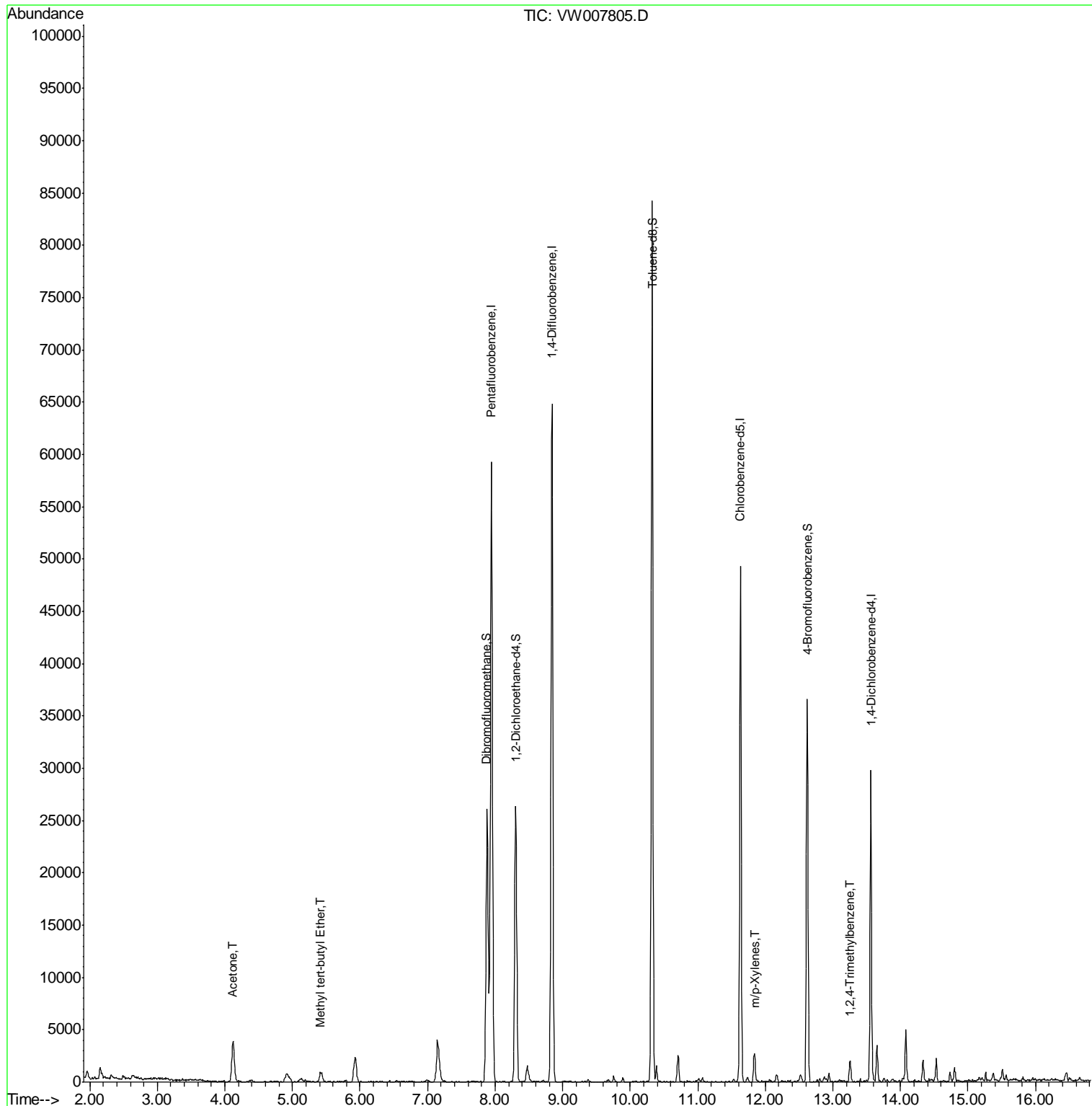
Data Path : Z:\VOASRV\HPCHEM1\MSVOA W\DATA\VW122318\
 Data File : VW007805.D
 Acq On : 21 Dec 2018 19:49
 Operator : SY/AP
 Sample : J6392-05RE
 Misc : 6.55G/5ML/MSVOA W/SOIL
 ALS Vial : 10 Sample Multiplier: 1

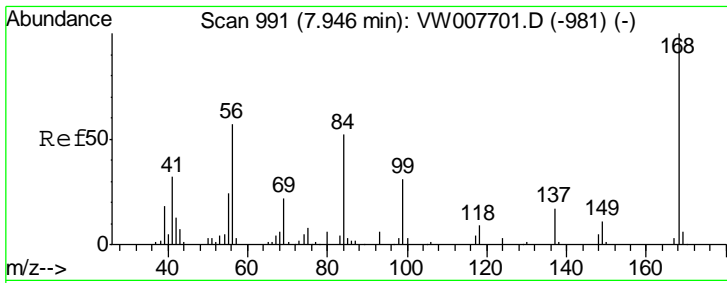
Instrument :
 MSVOA_W
ClientSampleId :
 KY001SB103-121118-(7-9)RE

Manual Integrations
APPROVED

MMDadoda
 12/26/2018 10:59:12 AM

Quant Time: Dec 22 02:49:25 2018
 Quant Method : Z:\VOASRV\HPCHEM1\MSVOA_W\METHOD\82W122118S.M
 Quant Title : SW846 8260
 QLast Update : Thu Dec 20 06:30:23 2018
 Response via : Initial Calibration





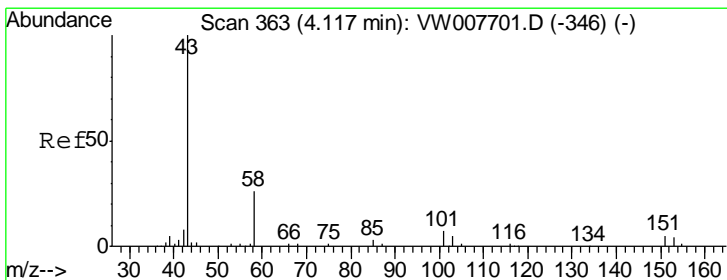
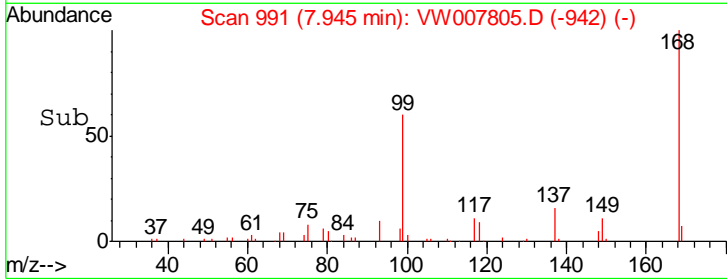
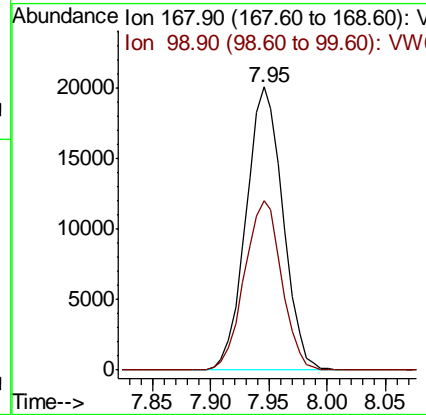
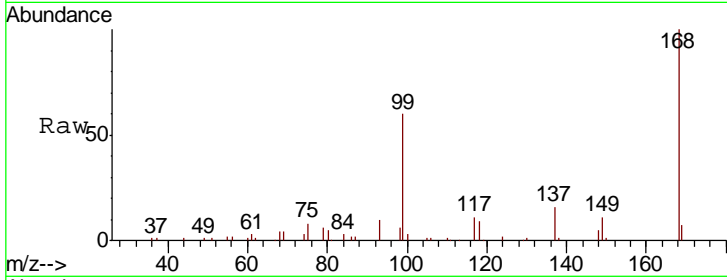
#1
 Pentafluorobenzene
 Concen: 50.000 ug/l
 RT: 7.95 min Scan# 991
 Delta R.T. -0.00 min
 Lab File: VW007805.D
 Acq: 21 Dec 2018 19:49

Instrument :
 MSVOA_W
 ClientSampled :
 KY001SB103-121118-(7-9)RE

Tgt Ion	Resp	Lower	Upper
168	100		
99	60.0	54.0	81.0

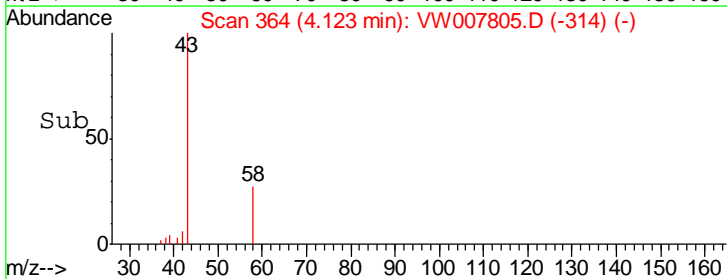
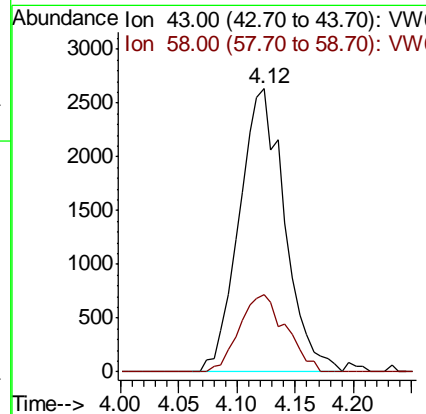
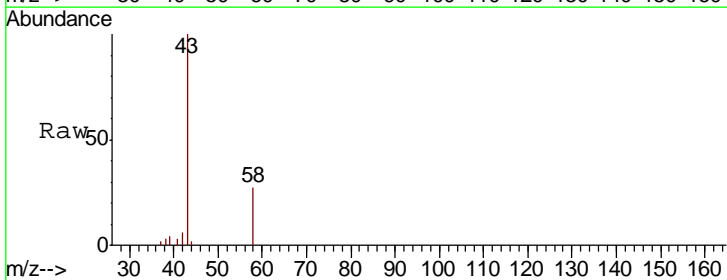
Manual Integrations
 APPROVED

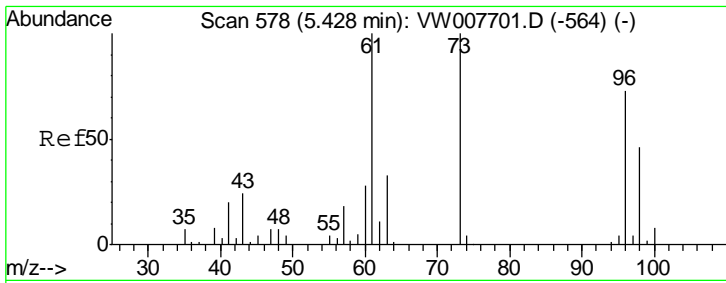
MMDadoda
 12/26/2018 10:59:12 AM



#16
 Acetone
 Concen: 79.115 ug/l
 RT: 4.12 min Scan# 364
 Delta R.T. 0.01 min
 Lab File: VW007805.D
 Acq: 21 Dec 2018 19:49

Tgt Ion	Resp	Lower	Upper
43	100		
58	27.2	21.2	31.8





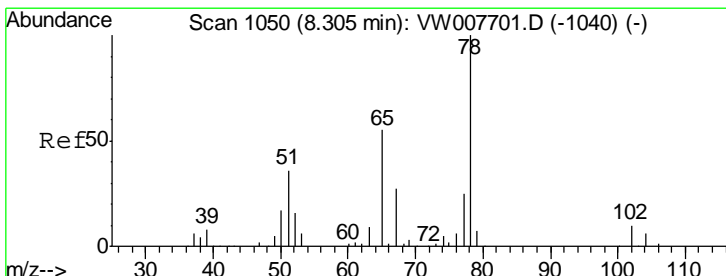
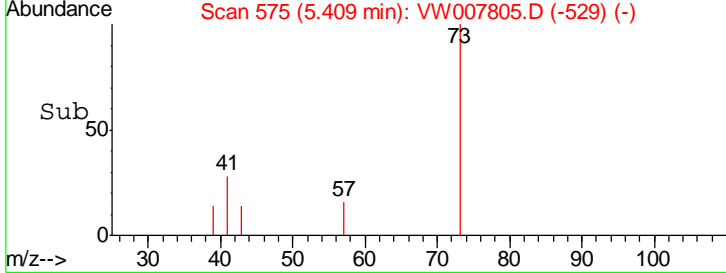
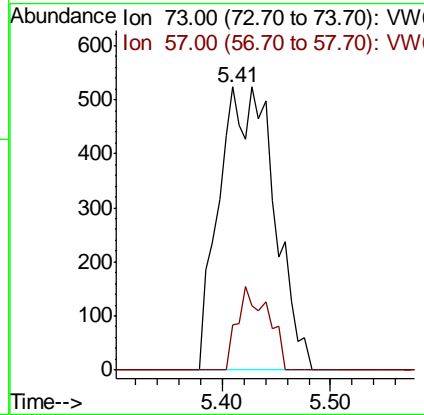
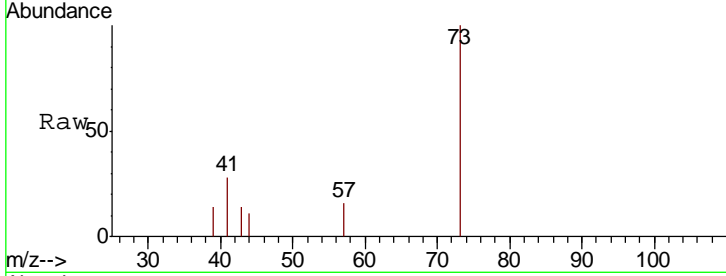
#19
 Methyl tert-butyl Ether
 Concen: 2.962 ug/l m
 RT: 5.41 min Scan# 575
 Delta R.T. -0.02 min
 Lab File: VW007805.D
 Acq: 21 Dec 2018 19:49

Instrument :
 MSVOA_W
ClientSampled :
 KY001SB103-121118-(7-9)RE

Tgt Ion: 73 Resp: 1849

Ion	Ratio	Lower	Upper
73	100		
57	16.1	14.7	22.1

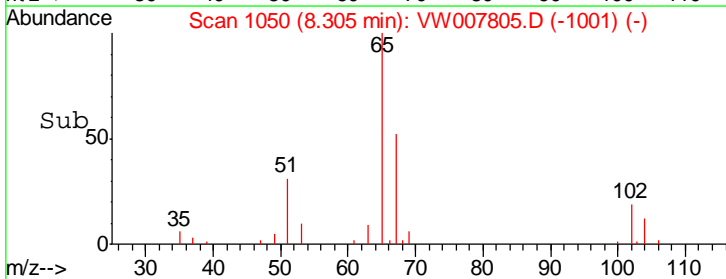
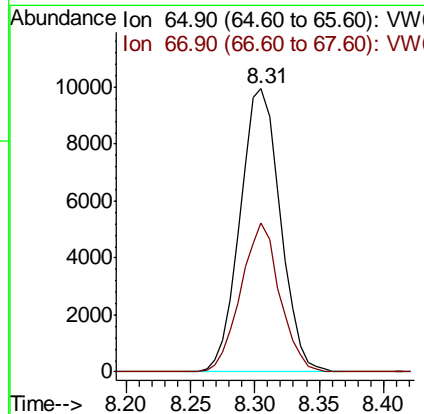
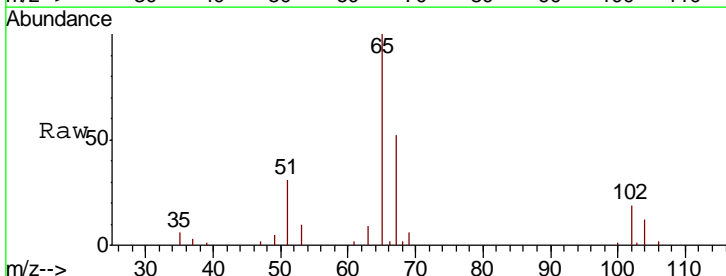
Manual Integrations
APPROVED
 MMDadoda
 12/26/2018 10:59:12 AM

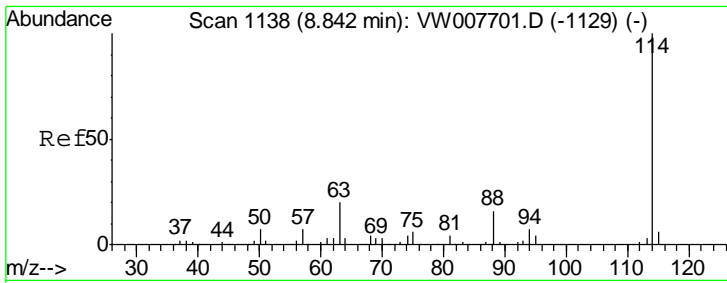


#33
 1,2-Dichloroethane-d4
 Concen: 44.517 ug/l
 RT: 8.31 min Scan# 1050
 Delta R.T. -0.00 min
 Lab File: VW007805.D
 Acq: 21 Dec 2018 19:49

Tgt Ion: 65 Resp: 21506

Ion	Ratio	Lower	Upper
65	100		
67	50.8	0.0	100.6



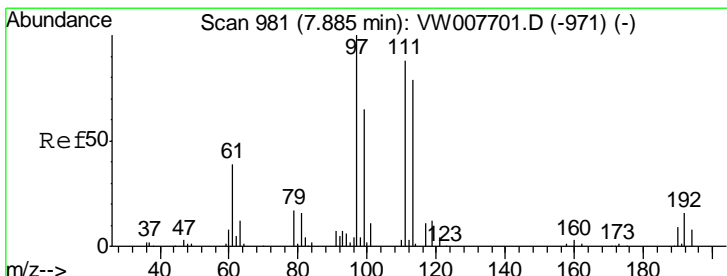
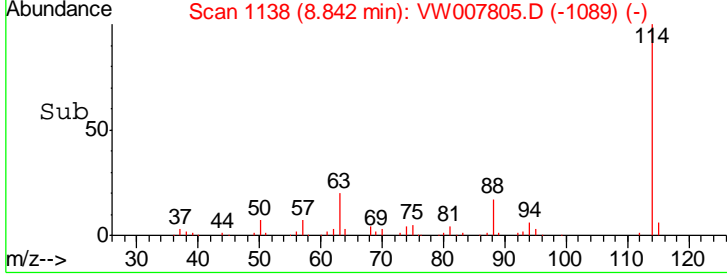
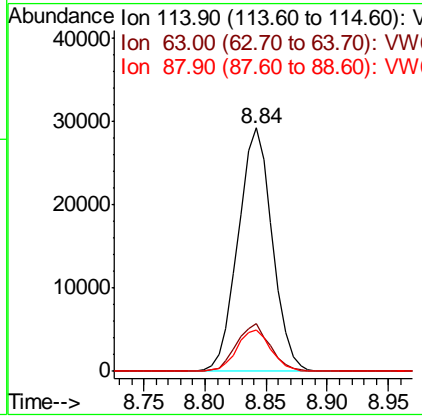
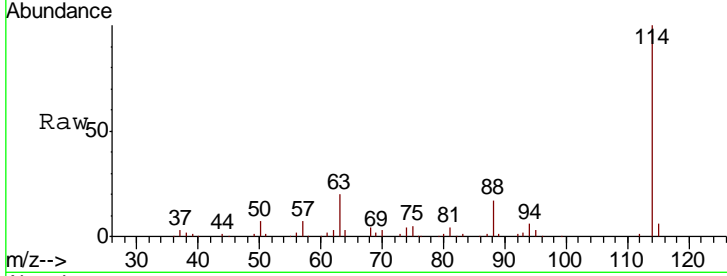


#34
 1,4-Difluorobenzene
 Concen: 50.000 ug/l
 RT: 8.84 min Scan# 1138
 Delta R.T. -0.00 min
 Lab File: VW007805.D
 Acq: 21 Dec 2018 19:49

Instrument : MSVOA_W
 ClientSampled : KY001SB103-121118-(7-9)RE

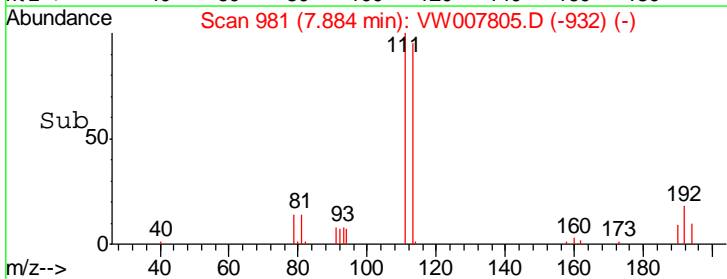
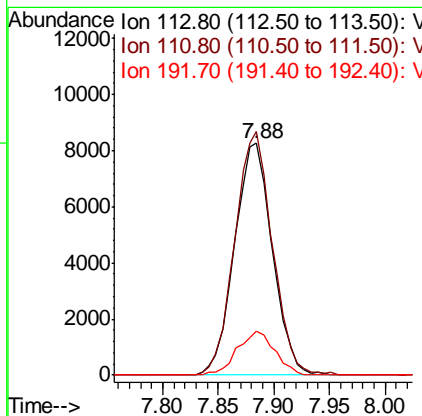
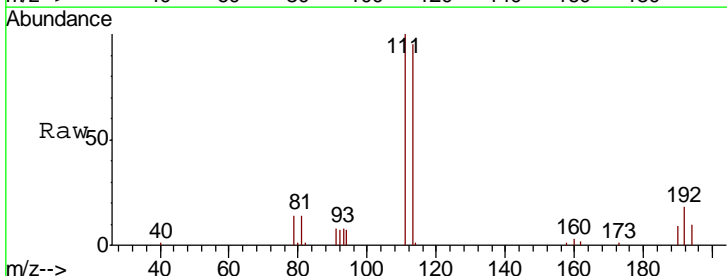
Tgt Ion	Resp	Lower	Upper
114	100		
63	19.8	0.0	40.0
88	16.8	0.0	32.6

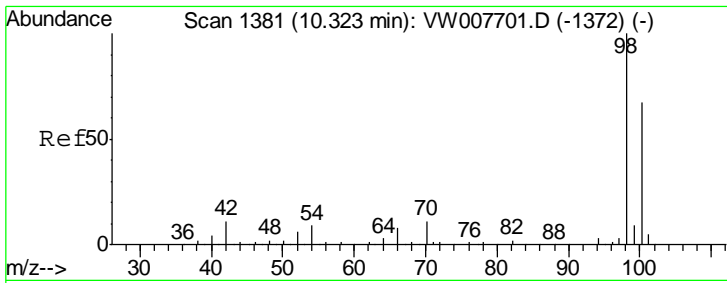
Manual Integrations
APPROVED
 MMDadoda
 12/26/2018 10:59:12 AM



#35
 Dibromofluoromethane
 Concen: 56.530 ug/l
 RT: 7.88 min Scan# 981
 Delta R.T. -0.00 min
 Lab File: VW007805.D
 Acq: 21 Dec 2018 19:49

Tgt Ion	Resp	Lower	Upper
113	100		
111	104.0	82.6	124.0
192	18.6	15.5	23.3





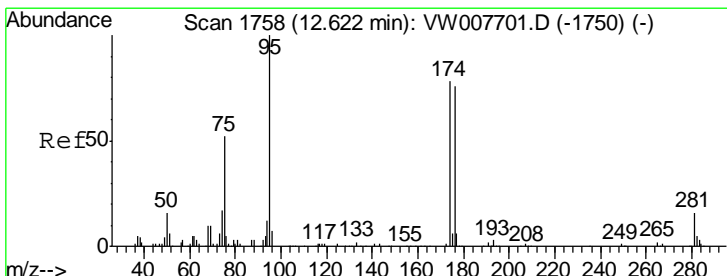
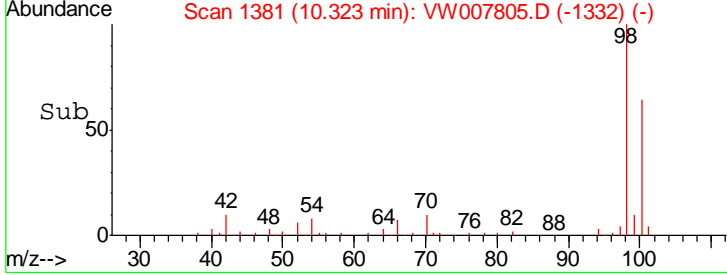
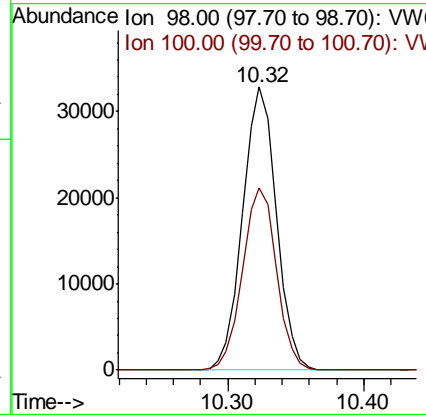
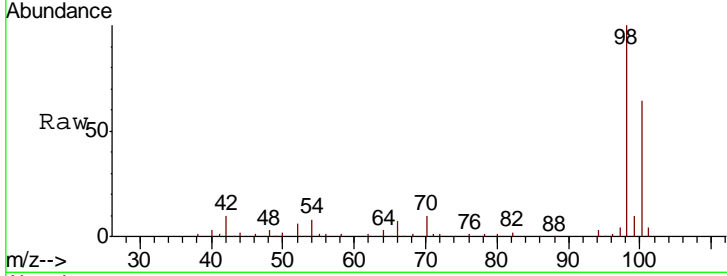
#50
 Toluene-d8
 Concen: 43.858 ug/l
 RT: 10.32 min Scan# 1381
 Delta R.T. -0.00 min
 Lab File: VW007805.D
 Acq: 21 Dec 2018 19:49

Instrument : MSVOA_W
 ClientSampled : KY001SB103-121118-(7-9)RE

Tgt Ion: 98 Resp: 57065

Ion	Ratio	Lower	Upper
98	100		
100	64.4	52.2	78.2

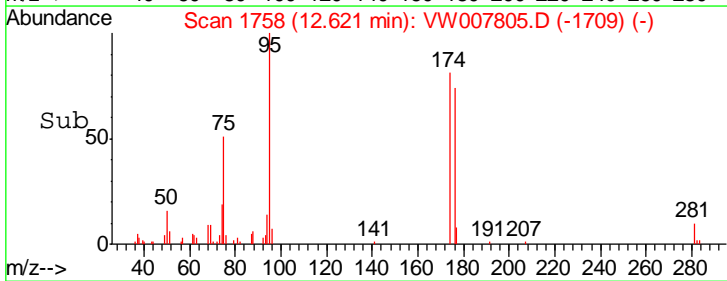
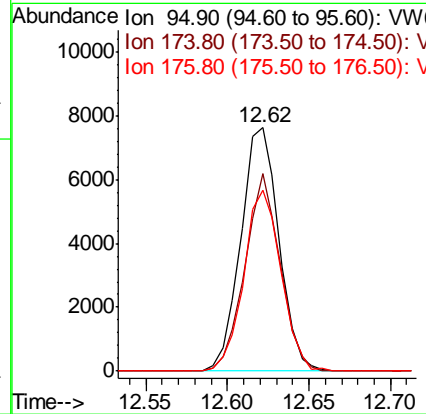
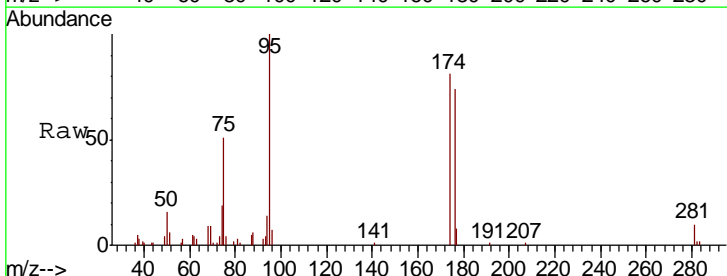
Manual Integrations
APPROVED
 MMDadoda
 12/26/2018 10:59:12 AM

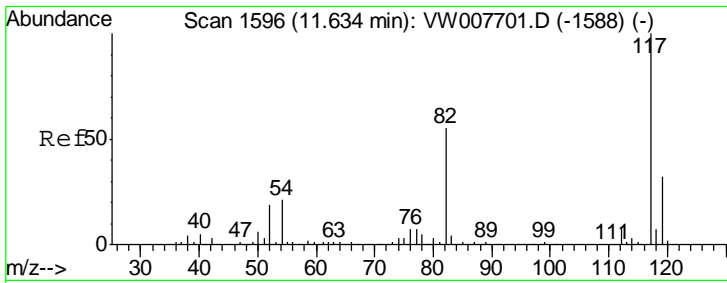


#62
 4-Bromofluorobenzene
 Concen: 24.699 ug/l
 RT: 12.62 min Scan# 1758
 Delta R.T. -0.00 min
 Lab File: VW007805.D
 Acq: 21 Dec 2018 19:49

Tgt Ion: 95 Resp: 12415

Ion	Ratio	Lower	Upper
95	100		
174	74.7	0.0	152.2
176	72.6	0.0	146.8



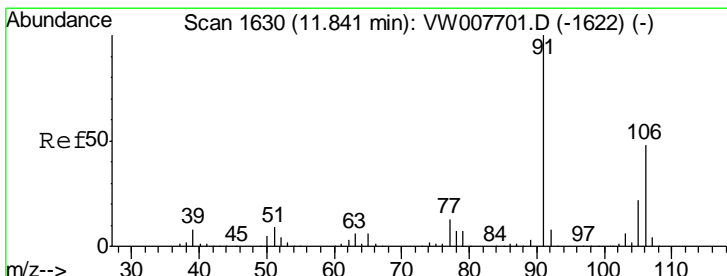
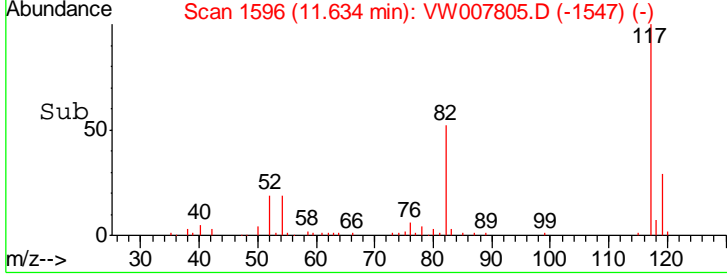
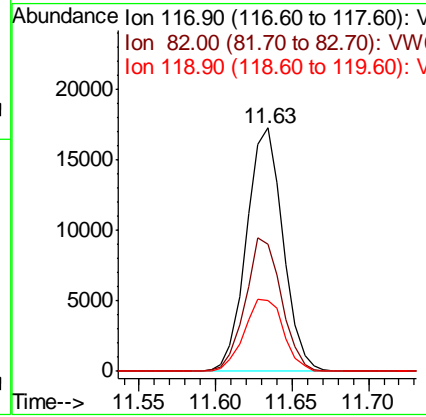
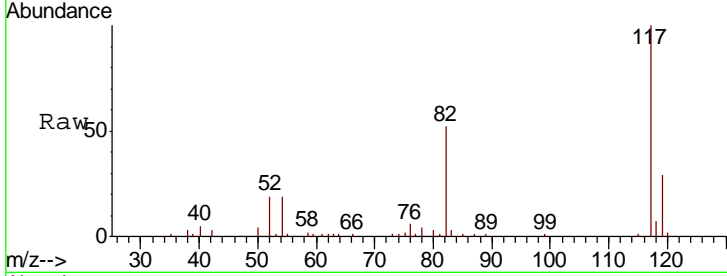


#63
 Chlorobenzene-d5
 Concen: 50.000 ug/l
 RT: 11.63 min Scan# 1596
 Delta R.T. -0.00 min
 Lab File: VW007805.D
 Acq: 21 Dec 2018 19:49

Instrument : MSVOA_W
 Client Sampled : KY001SB103-121118-(7-9)RE

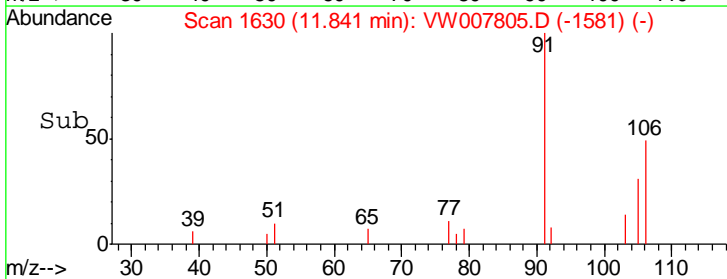
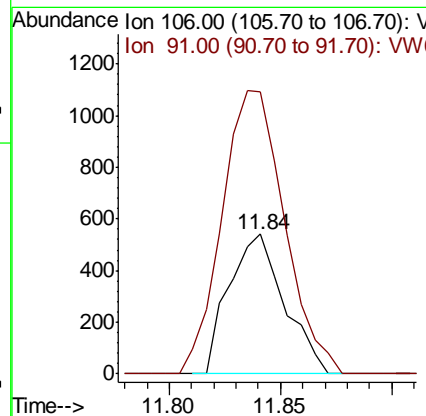
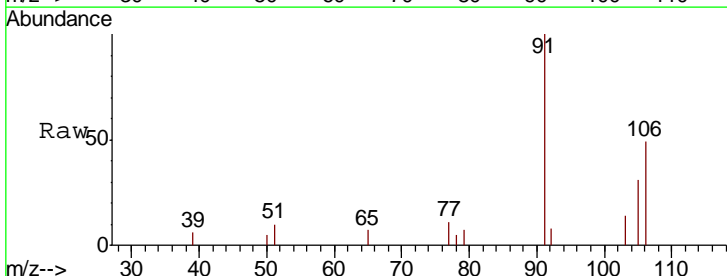
Tgt Ion	Resp	Lower	Upper
117	100		
82	52.4	44.3	66.5
119	29.3	25.7	38.5

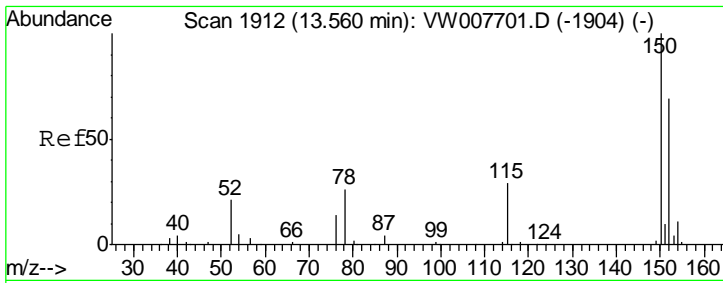
Manual Integrations
APPROVED
 MMDadoda
 12/26/2018 10:59:12 AM



#68
 m/p-Xylenes
 Concen: 2.252 ug/l
 RT: 11.84 min Scan# 1630
 Delta R.T. -0.00 min
 Lab File: VW007805.D
 Acq: 21 Dec 2018 19:49

Tgt Ion	Resp	Lower	Upper
106	100		
91	230.0	165.2	247.8



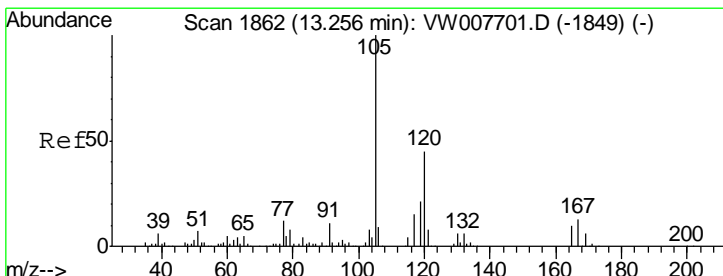
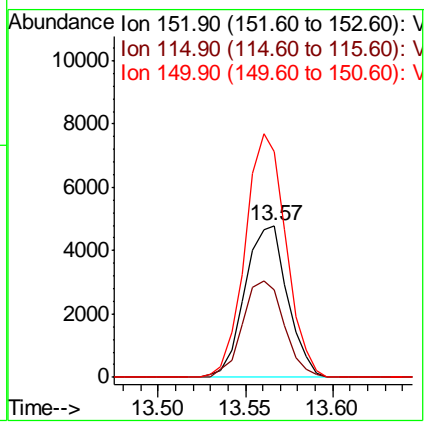
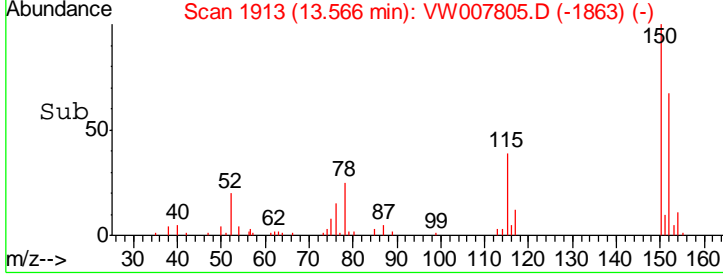
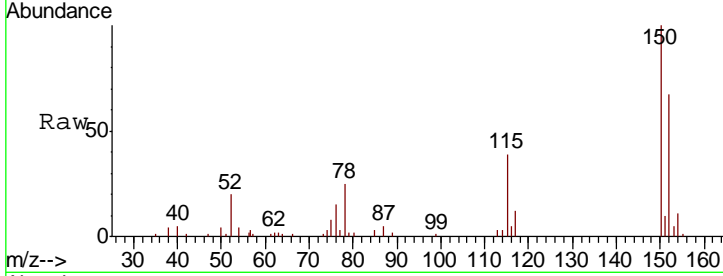


#72
 1,4-Dichlorobenzene-d4
 Concen: 50.000 ug/l
 RT: 13.57 min Scan# 1913
 Delta R.T. 0.01 min
 Lab File: VW007805.D
 Acq: 21 Dec 2018 19:49

Instrument : MSVOA_W
 ClientSampled : KY001SB103-121118-(7-9)RE

Tgt Ion	Resp	Lower	Upper
152	100		
115	61.6	31.8	95.4
150	153.3	0.0	350.8

Manual Integrations
APPROVED
 MMDadoda
 12/26/2018 10:59:12 AM



#84
 1,2,4-Trimethylbenzene
 Concen: 3.030 ug/l
 RT: 13.26 min Scan# 1862
 Delta R.T. -0.00 min
 Lab File: VW007805.D
 Acq: 21 Dec 2018 19:49

Tgt Ion	Resp	Lower	Upper
105	100		
120	42.1	22.0	66.0

