

Data Path : Z:\VOASRV\HPCHEM1\MSVOA_W\DATA\VW122418\
 Data File : VW007866.D
 Acq On : 23 Dec 2018 01:23
 Operator : SY/AP
 Sample : J6511-08
 Misc : 6.06G/5ML/MSVOA_W/SOIL
 ALS Vial : 25 Sample Multiplier: 1

Instrument :
 MSVOA_W
 ClientSampleId :
 SB-64(0-5)-GRAB

Quant Time: Dec 24 04:03:06 2018
 Quant Method : Z:\VOASRV\HPCHEM1\MSVOA_W\METHOD\82W122118S.M
 Quant Title : SW846 8260
 QLast Update : Thu Dec 20 06:30:23 2018
 Response via : Initial Calibration

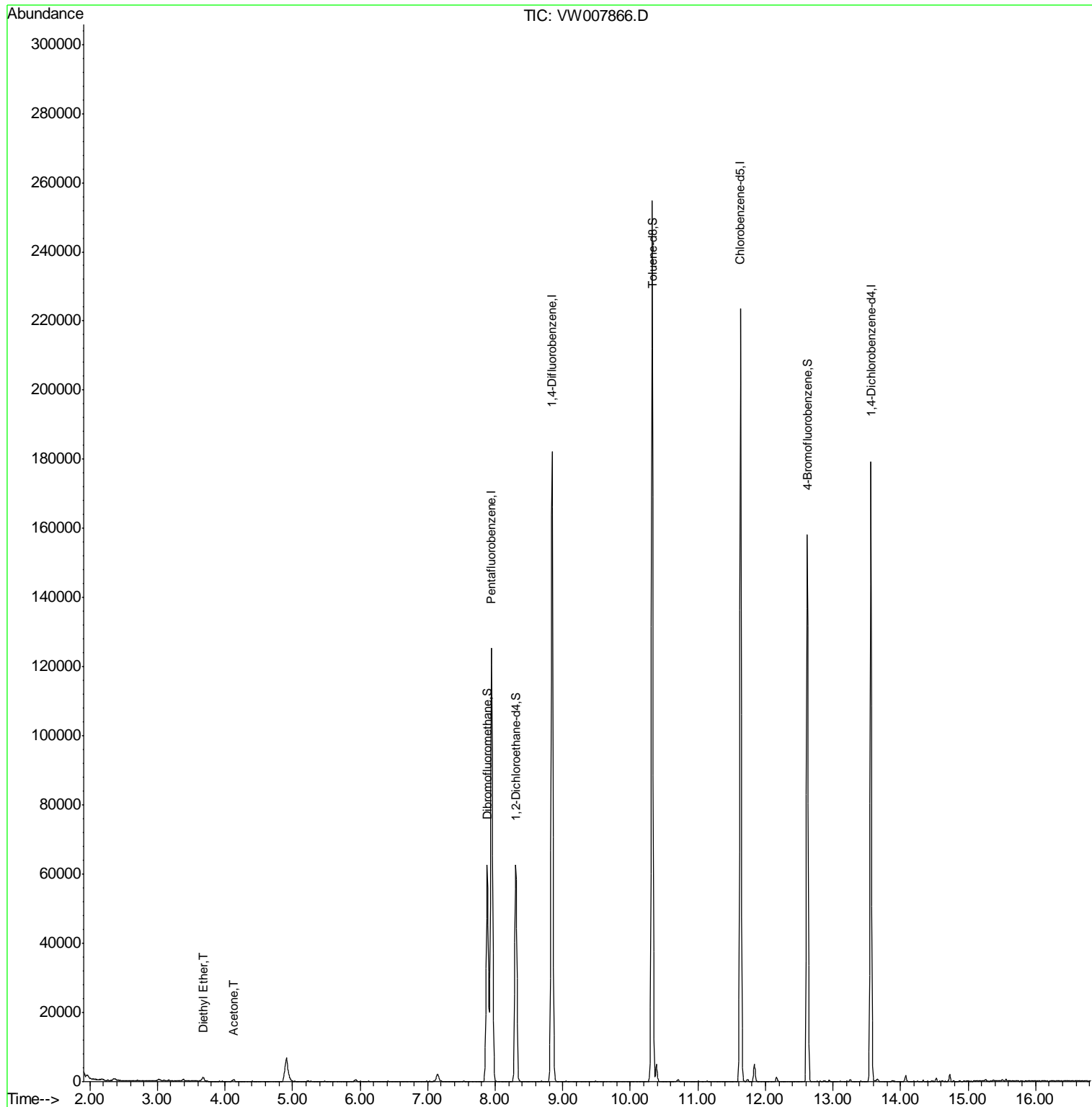
Internal Standards	R.T.	QIon	Response	Conc	Units	Dev(Min)
1) Pentafluorobenzene	7.95	168	92803	50.00	ug/l	0.00
34) 1,4-Difluorobenzene	8.84	114	157309	50.00	ug/l	0.00
63) Chlorobenzene-d5	11.63	117	124340	50.00	ug/l	0.00
72) 1,4-Dichlorobenzene-d4	13.56	152	47101	50.00	ug/l	0.00
System Monitoring Compounds						
33) 1,2-Dichloroethane-d4	8.31	65	51162	50.30	ug/l	0.00
Spiked Amount	50.000		Recovery	=	100.60%	
35) Dibromofluoromethane	7.88	113	46368	48.32	ug/l	0.00
Spiked Amount	50.000		Recovery	=	96.64%	
50) Toluene-d8	10.32	98	174189	48.15	ug/l	0.00
Spiked Amount	50.000		Recovery	=	96.30%	
62) 4-Bromofluorobenzene	12.62	95	55034	39.38	ug/l	0.00
Spiked Amount	50.000		Recovery	=	78.76%	
Target Compounds						
8) Diethyl Ether	3.67	74	730	1.775	ug/l	92
16) Acetone	4.13	43	951	4.993	ug/l	98

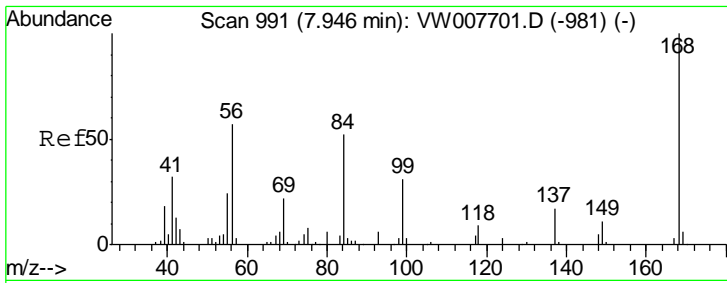
(#) = qualifier out of range (m) = manual integration (+) = signals summed

Data Path : Z:\VOASRV\HPCHEM1\MSVOA_W\DATA\VW122418\
 Data File : VW007866.D
 Acq On : 23 Dec 2018 01:23
 Operator : SY/AP
 Sample : J6511-08
 Misc : 6.06G/5ML/MSVOA_W/SOIL
 ALS Vial : 25 Sample Multiplier: 1

Instrument :
 MSVOA_W
 ClientSampleId :
 SB-64(0-5)-GRAB

Quant Time: Dec 24 04:03:06 2018
 Quant Method : Z:\VOASRV\HPCHEM1\MSVOA_W\METHOD\82W122118S.M
 Quant Title : SW846 8260
 QLast Update : Thu Dec 20 06:30:23 2018
 Response via : Initial Calibration

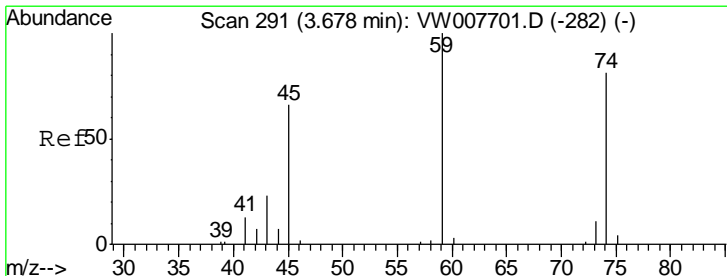
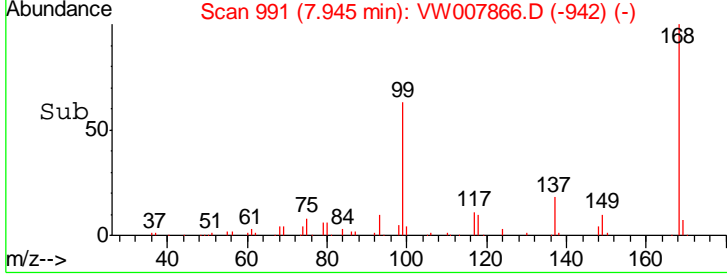
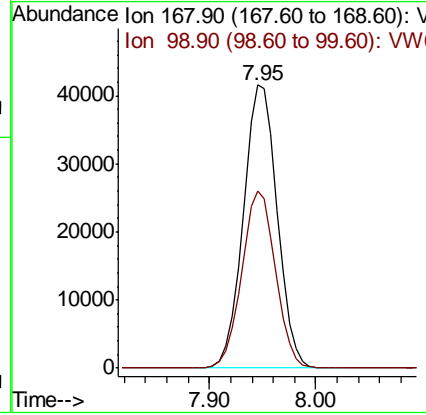
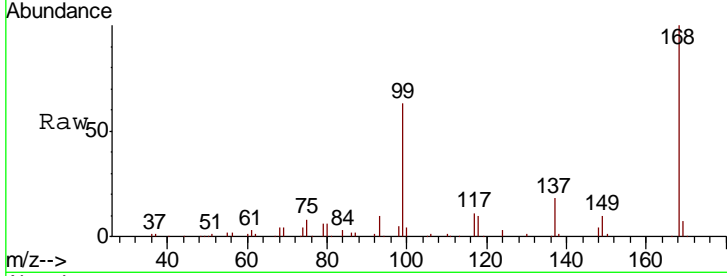




#1
 Pentafluorobenzene
 Concen: 50.000 ug/l
 RT: 7.95 min Scan# 991
 Delta R.T. -0.00 min
 Lab File: VW007866.D
 Acq: 23 Dec 2018 01:23

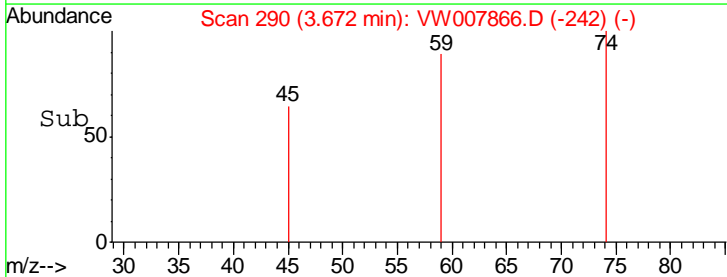
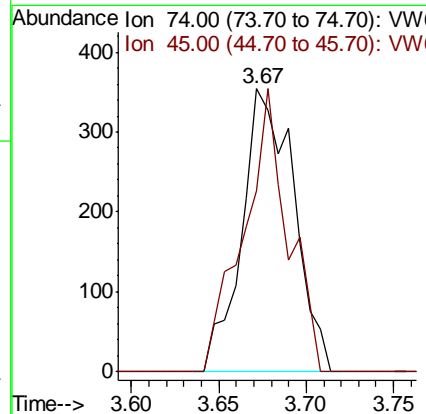
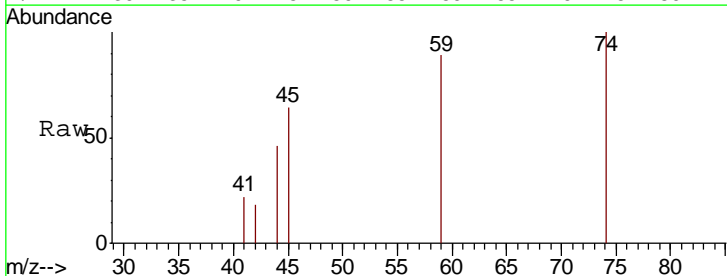
Instrument :
 MSVOA_W
ClientSampleId :
 SB-64(0-5)-GRAB

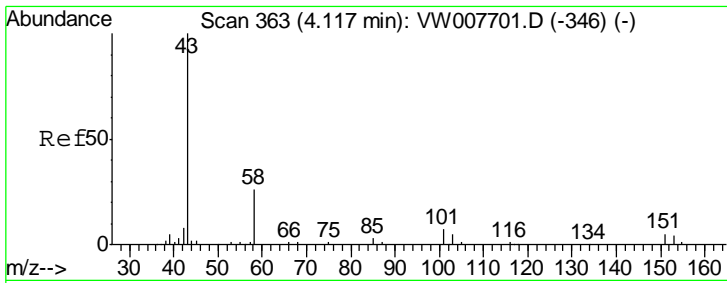
Tgt Ion: 168 Resp: 92803
 Ion Ratio Lower Upper
 168 100
 99 62.7 54.0 81.0



#8
 Diethyl Ether
 Concen: 1.775 ug/l
 RT: 3.67 min Scan# 290
 Delta R.T. -0.01 min
 Lab File: VW007866.D
 Acq: 23 Dec 2018 01:23

Tgt Ion: 74 Resp: 730
 Ion Ratio Lower Upper
 74 100
 45 85.6 39.4 118.1

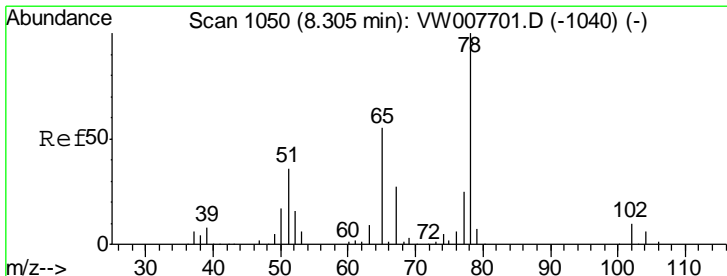
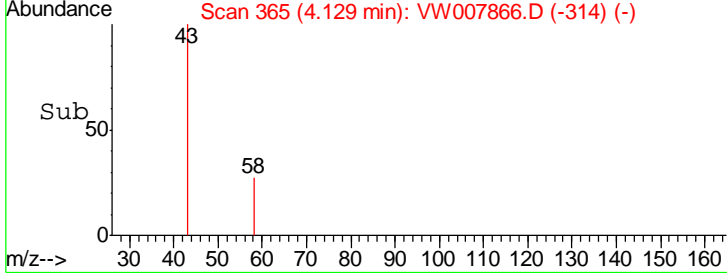
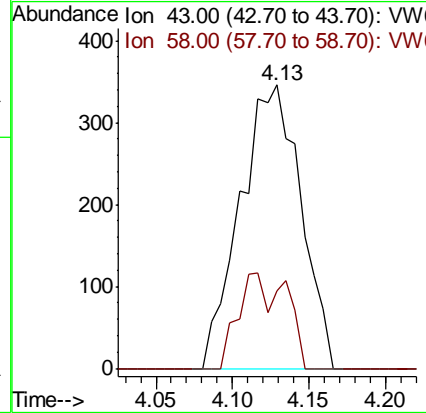
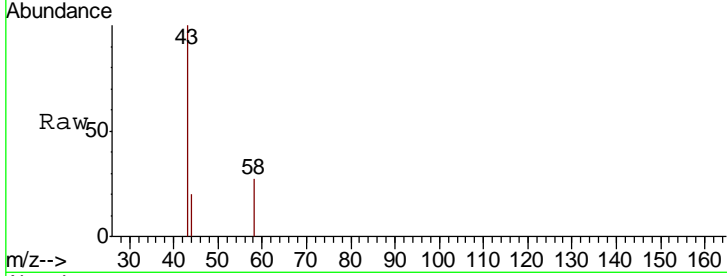




#16
 Acetone
 Concen: 4.993 ug/l
 RT: 4.13 min Scan# 365
 Delta R.T. 0.01 min
 Lab File: VW007866.D
 Acq: 23 Dec 2018 01:23

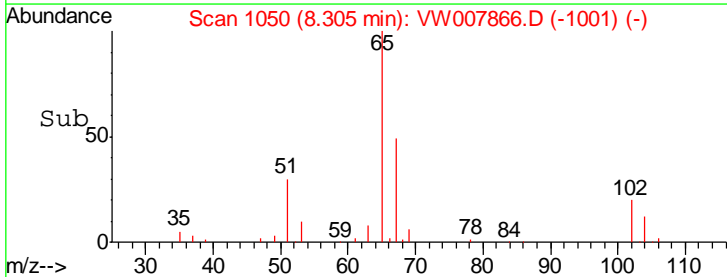
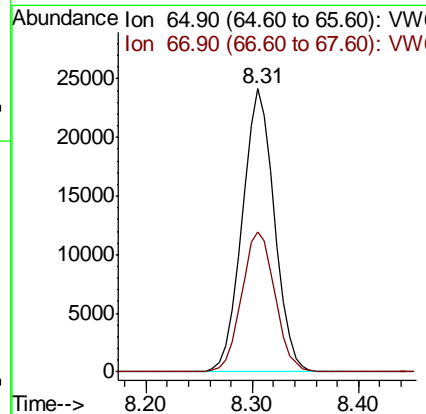
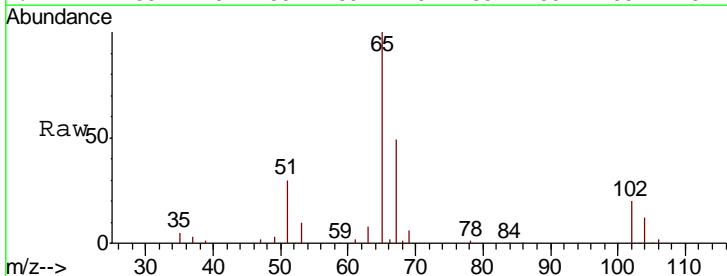
Instrument :
 MSVOA_W
ClientSampled :
 SB-64(0-5)-GRAB

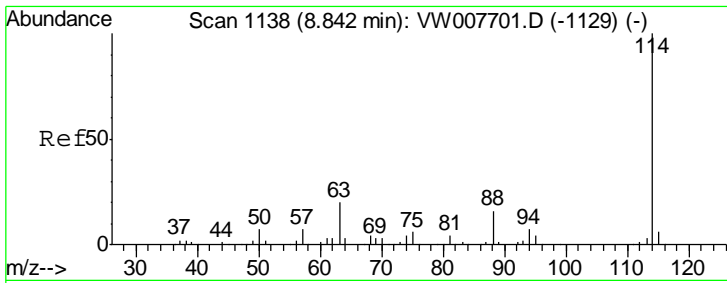
Tgt Ion: 43 Resp: 951
 Ion Ratio Lower Upper
 43 100
 58 27.5 21.2 31.8



#33
 1,2-Dichloroethane-d4
 Concen: 50.299 ug/l
 RT: 8.31 min Scan# 1050
 Delta R.T. -0.00 min
 Lab File: VW007866.D
 Acq: 23 Dec 2018 01:23

Tgt Ion: 65 Resp: 51162
 Ion Ratio Lower Upper
 65 100
 67 51.0 0.0 100.6

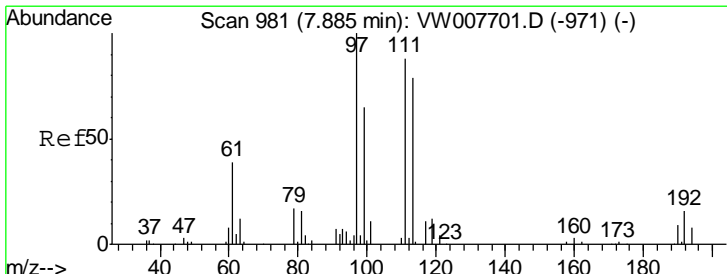
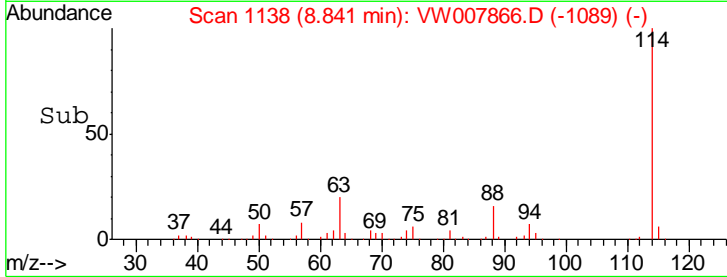
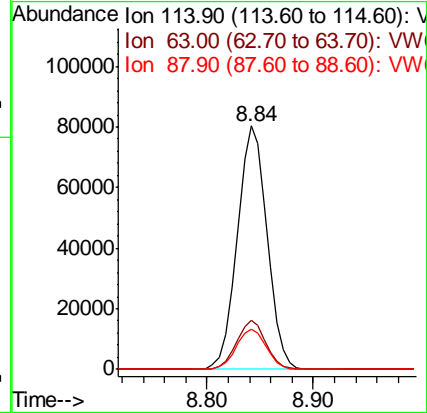
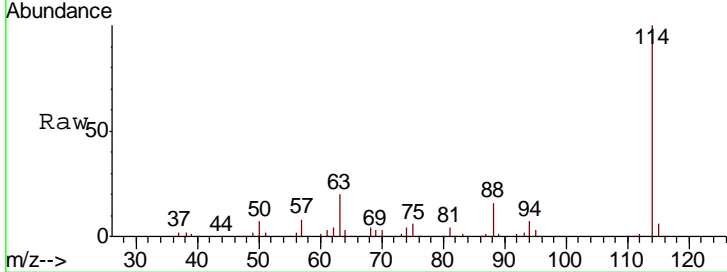




#34
 1,4-Difluorobenzene
 Concen: 50.000 ug/l
 RT: 8.84 min Scan# 1138
 Delta R.T. -0.00 min
 Lab File: VW007866.D
 Acq: 23 Dec 2018 01:23

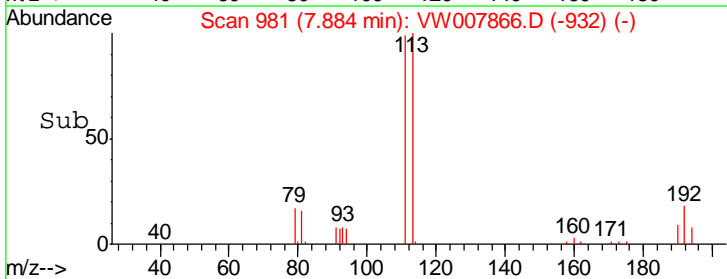
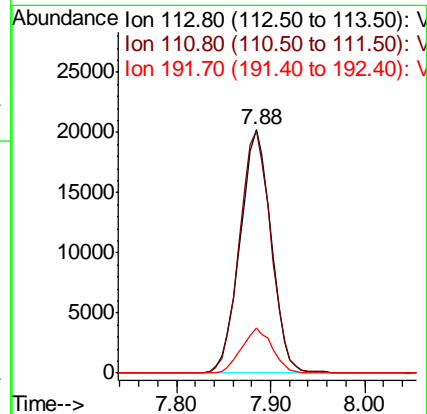
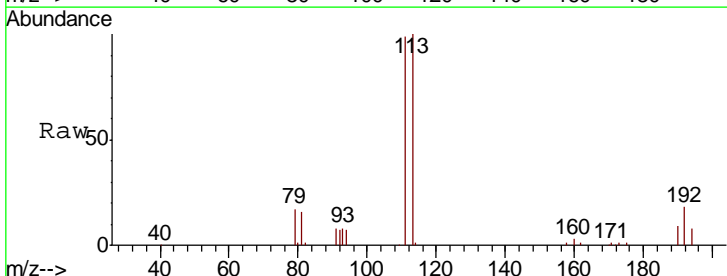
Instrument :
 MSVOA_W
 ClientSampled :
 SB-64(0-5)-GRAB

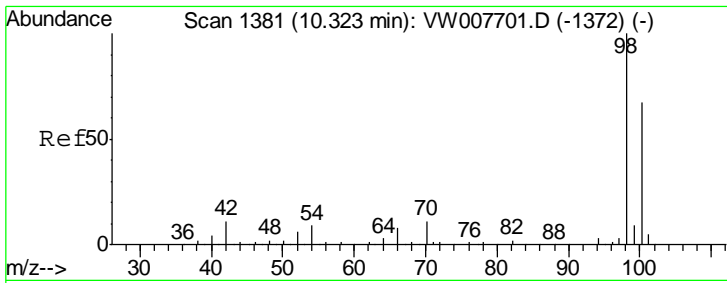
Tgt Ion	Resp	Lower	Upper
114	157309		
63	20.1	0.0	40.0
88	16.5	0.0	32.6



#35
 Dibromofluoromethane
 Concen: 48.317 ug/l
 RT: 7.88 min Scan# 981
 Delta R.T. -0.00 min
 Lab File: VW007866.D
 Acq: 23 Dec 2018 01:23

Tgt Ion	Resp	Lower	Upper
113	46368		
111	100.8	82.6	124.0
192	18.2	15.5	23.3

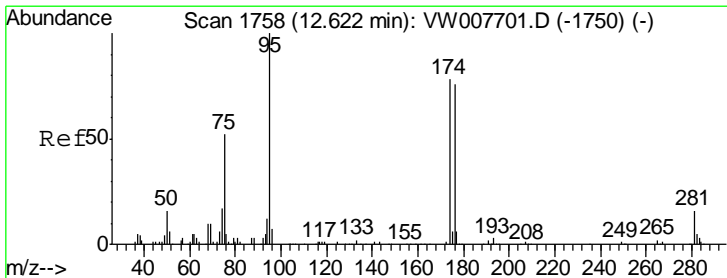
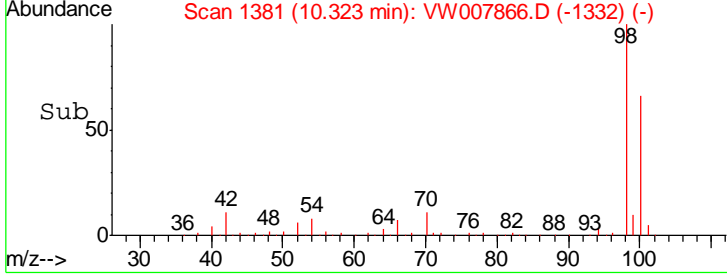
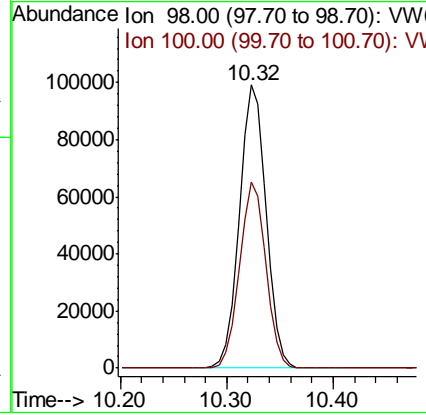
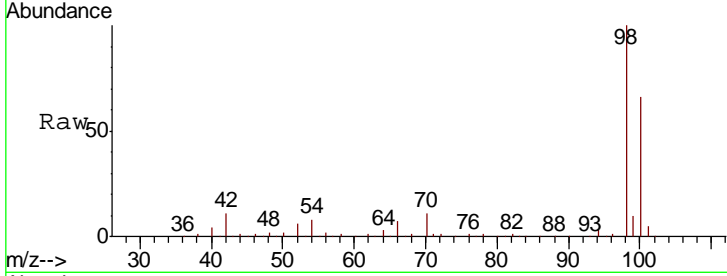




#50
 Toluene-d8
 Concen: 48.148 ug/l
 RT: 10.32 min Scan# 1381
 Delta R.T. -0.00 min
 Lab File: VW007866.D
 Acq: 23 Dec 2018 01:23

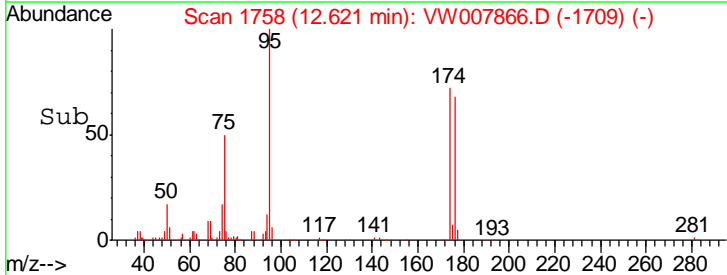
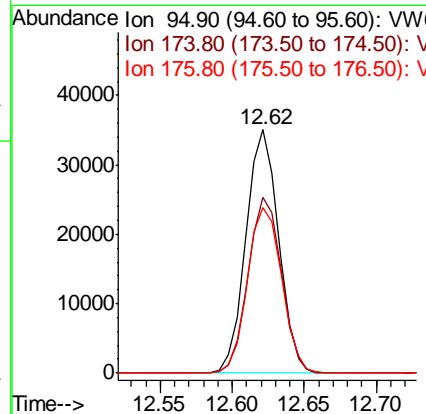
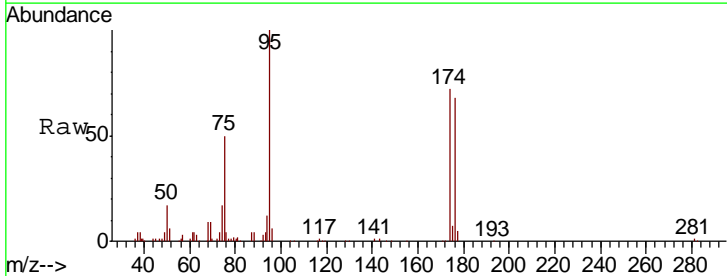
Instrument :
 MSVOA_W
ClientSampled :
 SB-64(0-5)-GRAB

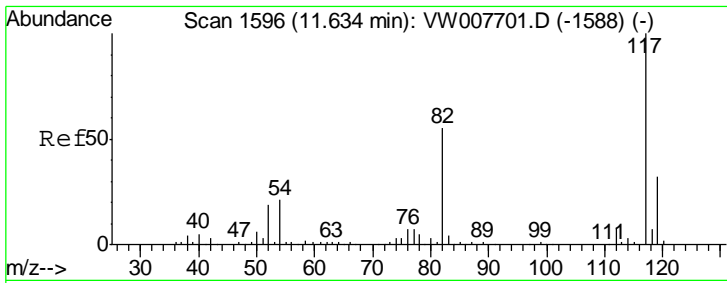
Tgt Ion: 98 Resp: 174189
 Ion Ratio Lower Upper
 98 100
 100 64.9 52.2 78.2



#62
 4-Bromofluorobenzene
 Concen: 39.377 ug/l
 RT: 12.62 min Scan# 1758
 Delta R.T. -0.00 min
 Lab File: VW007866.D
 Acq: 23 Dec 2018 01:23

Tgt Ion: 95 Resp: 55034
 Ion Ratio Lower Upper
 95 100
 174 73.7 0.0 152.2
 176 71.1 0.0 146.8

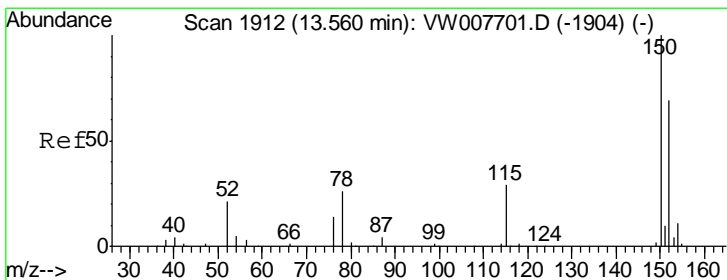
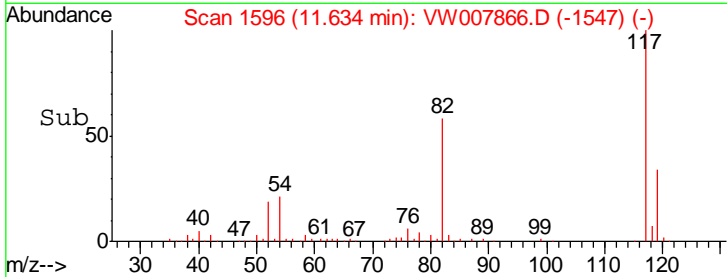
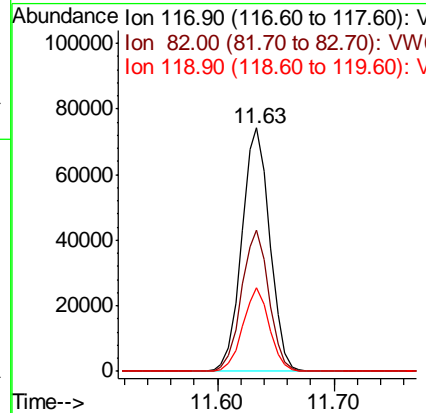
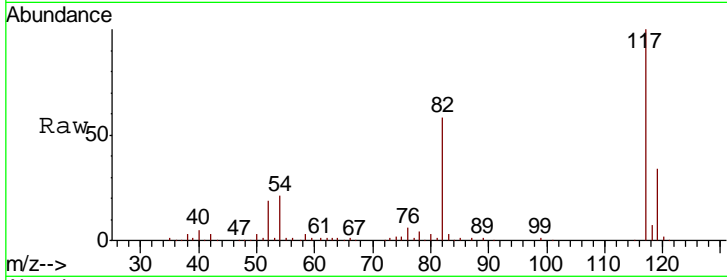




#63
 Chlorobenzene-d5
 Concen: 50.000 ug/l
 RT: 11.63 min Scan# 1596
 Delta R.T. -0.00 min
 Lab File: VW007866.D
 Acq: 23 Dec 2018 01:23

Instrument :
 MSVOA_W
 ClientSampled :
 SB-64(0-5)-GRAB

Tgt Ion	Resp	Lower	Upper
117	124340		
82	58.1	44.3	66.5
119	34.1	25.7	38.5



#72
 1,4-Dichlorobenzene-d4
 Concen: 50.000 ug/l
 RT: 13.56 min Scan# 1912
 Delta R.T. -0.00 min
 Lab File: VW007866.D
 Acq: 23 Dec 2018 01:23

Tgt Ion	Resp	Lower	Upper
152	47101		
115	62.3	31.8	95.4
150	157.7	0.0	350.8

