

Data Path : Z:\voasrv\HPCHEM1\MSVOA\_W\Data\VW122521\  
 Data File : VW021654.D  
 Acq On : 25 Dec 2021 18:33  
 Operator : SY/VA  
 Sample : M5213-12RE  
 Misc : 5.60g/10.0mL/MSVOA\_W/SOIL  
 ALS Vial : 1 Sample Multiplier: 1

Instrument :  
 MSVOA\_W  
 ClientSampleId :

Quant Time: Dec 27 00:42:17 2021  
 Quant Method : Z:\voasrv\HPCHEM1\MSVOA\_W\Method\SFAMWLM120921SMA.M  
 Quant Title : SFAM01.0  
 QLast Update : Fri Dec 24 01:43:02 2021  
 Response via : Initial Calibration

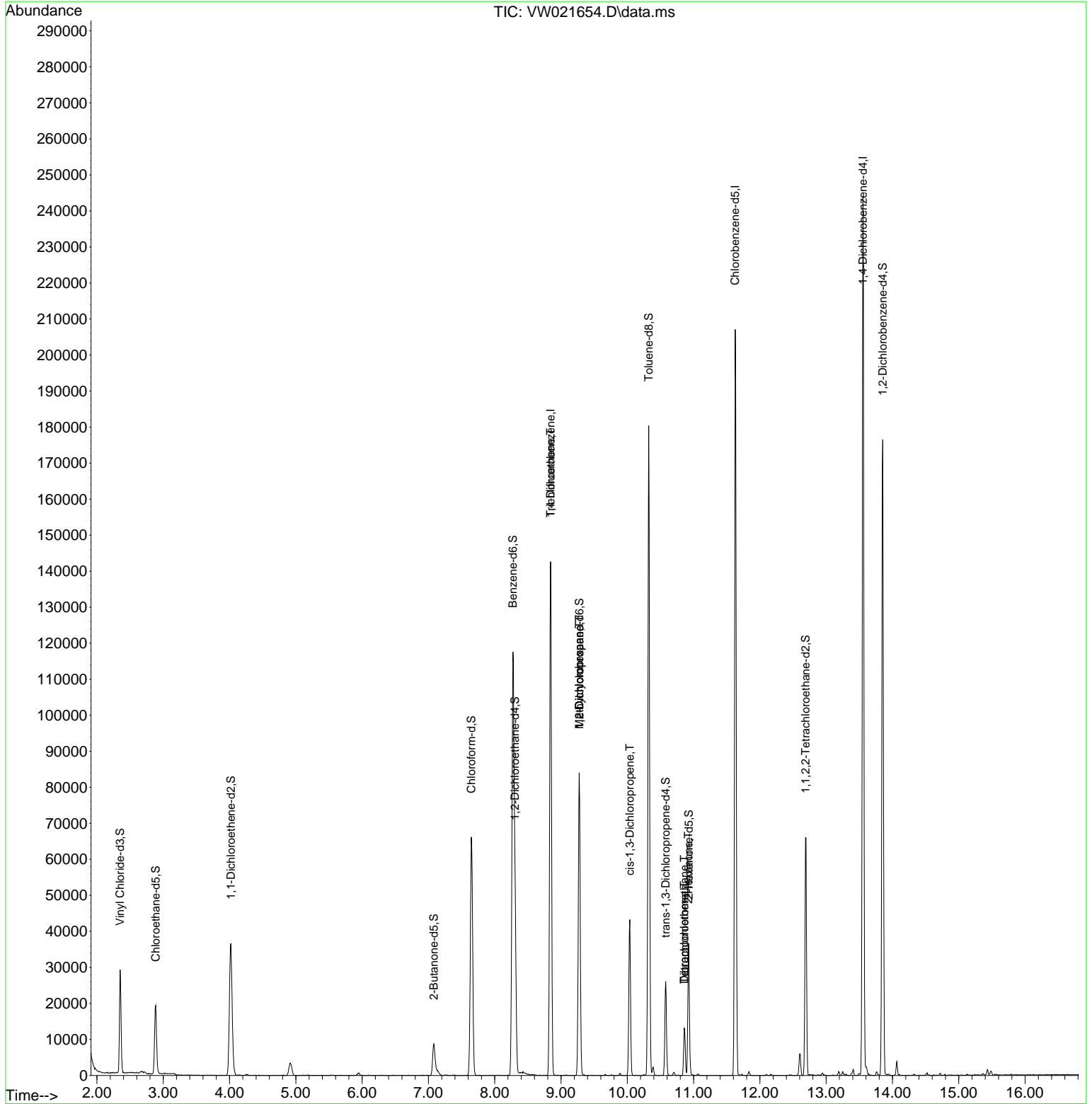
Compound	R.T.	QIon	Response	Conc	Units	Dev(Min)
Internal Standards						
1) 1,4-Difluorobenzene	8.842	114	120654	25.000	ug/L	# 0.00
28) Chlorobenzene-d5	11.628	117	116382	25.000	ug/L	0.00
58) 1,4-Dichlorobenzene-d4	13.554	152	64229	25.000	ug/L	0.00
System Monitoring Compounds						
4) Vinyl Chloride-d3	2.349	65	28137	12.805	ug/L	0.00
Spiked Amount	25.000	Range 30 - 150	Recovery =	51.200%		
7) Chloroethane-d5	2.886	69	22249	15.316	ug/L	0.00
Spiked Amount	25.000	Range 30 - 150	Recovery =	61.280%		
11) 1,1-Dichloroethene-d2	4.019	63	35047	11.963	ug/L	0.00
Spiked Amount	25.000	Range 45 - 110	Recovery =	47.840%		
21) 2-Butanone-d5	7.080	46	14659	47.325	ug/L	-0.02
Spiked Amount	50.000	Range 20 - 135	Recovery =	94.660%		
24) Chloroform-d	7.647	84	66514	19.782	ug/L	0.00
Spiked Amount	25.000	Range 40 - 150	Recovery =	79.120%		
26) 1,2-Dichloroethane-d4	8.305	65	36477	20.395	ug/L	0.00
Spiked Amount	25.000	Range 70 - 130	Recovery =	81.560%		
32) Benzene-d6	8.275	84	120270	18.853	ug/L	0.00
Spiked Amount	25.000	Range 20 - 135	Recovery =	75.400%		
36) 1,2-Dichloropropane-d6	9.275	67	35807	20.929	ug/L	0.00
Spiked Amount	25.000	Range 70 - 120	Recovery =	83.720%		
41) Toluene-d8	10.323	98	113956	17.483	ug/L	0.00
Spiked Amount	25.000	Range 30 - 130	Recovery =	69.920%		
43) trans-1,3-Dichloroprop...	10.579	79	14166	17.983	ug/L	0.00
Spiked Amount	25.000	Range 30 - 135	Recovery =	71.920%		
47) 2-Hexanone-d5	10.927	63	12370	48.895	ug/L	0.00
Spiked Amount	50.000	Range 20 - 135	Recovery =	97.800%		
56) 1,1,2,2-Tetrachloroeth...	12.689	84	30098	20.465	ug/L	0.00
Spiked Amount	25.000	Range 45 - 120	Recovery =	81.840%		
66) 1,2-Dichlorobenzene-d4	13.853	152	49333	19.819	ug/L	0.00
Spiked Amount	25.000	Range 75 - 120	Recovery =	79.280%		
Target Compounds						
34) Trichloroethene	8.842	95	3656	2.054	ug/L #	5
35) Methylcyclohexane	9.275	83	9820	3.345	ug/L #	15
37) 1,2-Dichloropropane	9.275	63	4578	3.237	ug/L #	88
39) cis-1,3-Dichloropropene	10.037	75	1263	0.567	ug/L #	66
46) Tetrachloroethene	10.860	164	3081	1.822	ug/L	97
48) 2-Hexanone	10.921	43	1717	3.073	ug/L #	68
49) Dibromochloromethane	10.860	129	2546	1.784	ug/L #	10

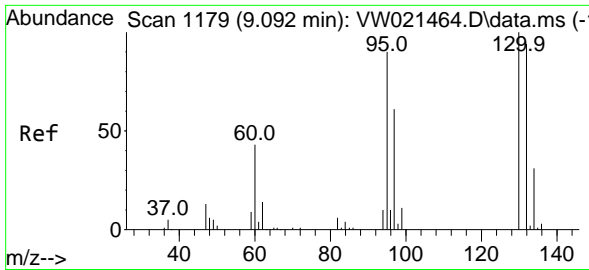
(#) = qualifier out of range (m) = manual integration (+) = signals summed

Data Path : Z:\voasrv\HPCHEM1\MSVOA\_W\Data\VW122521\  
 Data File : VW021654.D  
 Acq On : 25 Dec 2021 18:33  
 Operator : SY/VA  
 Sample : M5213-12RE  
 Misc : 5.60g/10.0mL/MSVOA\_W/SOIL  
 ALS Vial : 1 Sample Multiplier: 1

Instrument :  
 MSVOA\_W  
 ClientSampleId :

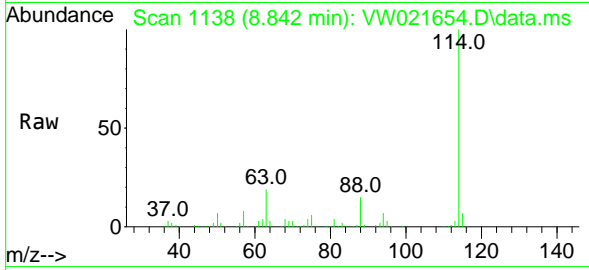
Quant Time: Dec 27 00:42:17 2021  
 Quant Method : Z:\voasrv\HPCHEM1\MSVOA\_W\Method\SFAMWLM120921SMA.M  
 Quant Title : SFAM01.0  
 QLast Update : Fri Dec 24 01:43:02 2021  
 Response via : Initial Calibration



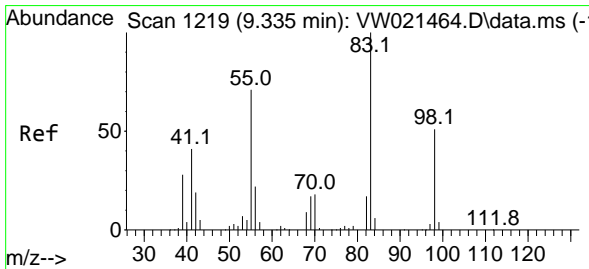
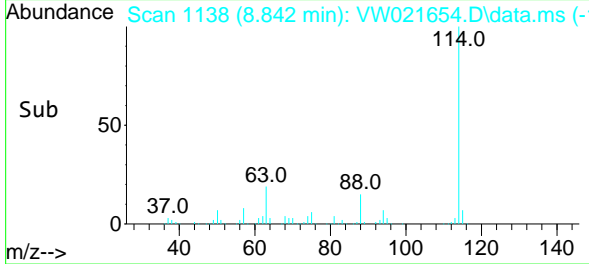
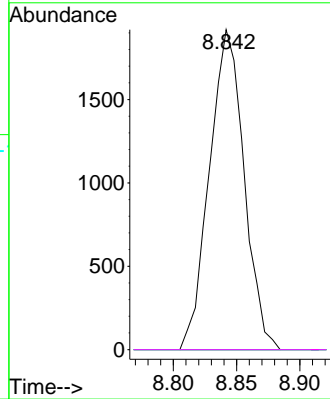


#34  
 Trichloroethene  
 Concen: 2.054 ug/L  
 RT: 8.842 min Scan# 1179  
 Delta R.T. -0.250 min  
 Lab File: VW021654.D  
 Acq: 25 Dec 2021 18:33

Instrument : MSVOA\_W  
 ClientSampleId :

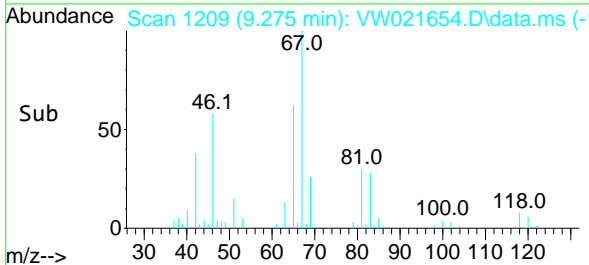
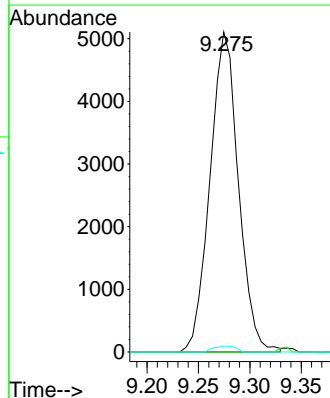
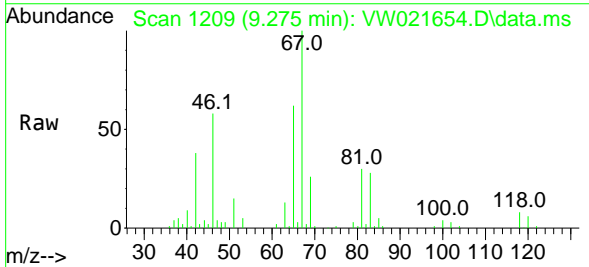


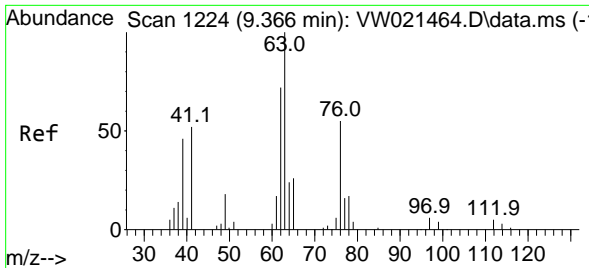
Tgt Ion: 95 Resp: 3656  
 Ion Ratio Lower Upper  
 95 100  
 97 0.0 47.0 87.2#  
 132 0.0 65.5 121.6#  
 130 0.0 69.4 128.8#



#35  
 Methylcyclohexane  
 Concen: 3.345 ug/L  
 RT: 9.275 min Scan# 1209  
 Delta R.T. -0.061 min  
 Lab File: VW021654.D  
 Acq: 25 Dec 2021 18:33

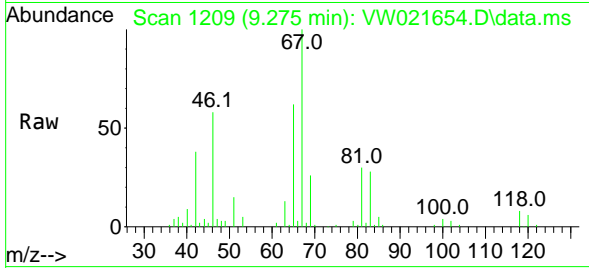
Tgt Ion: 83 Resp: 9820  
 Ion Ratio Lower Upper  
 83 100  
 55 0.5 70.8 106.2#  
 98 1.4 37.7 56.5#



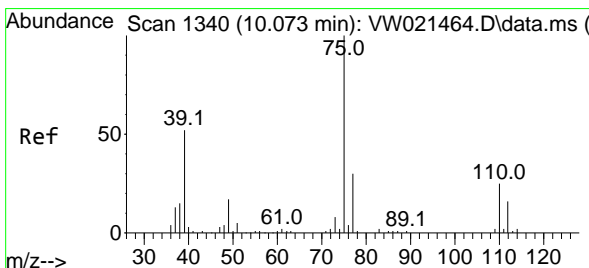
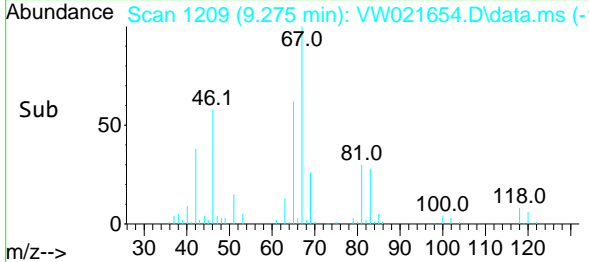
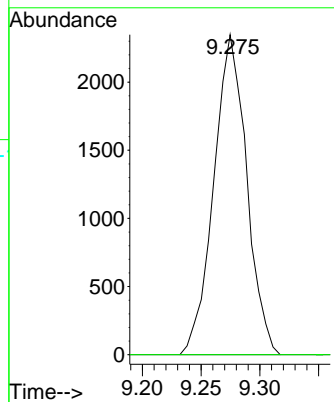


#37  
 1,2-Dichloropropane  
 Concen: 3.237 ug/L  
 RT: 9.275 min Scan# 1111  
 Delta R.T. -0.097 min  
 Lab File: VW021654.D  
 Acq: 25 Dec 2021 18:33

Instrument : MSVOA\_W  
 ClientSampled :

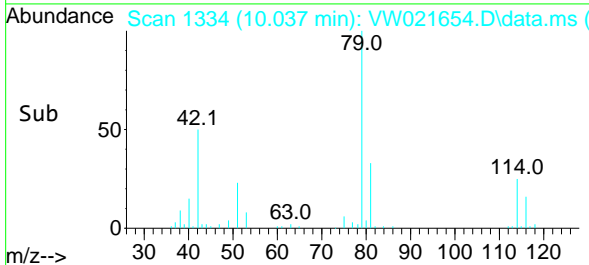
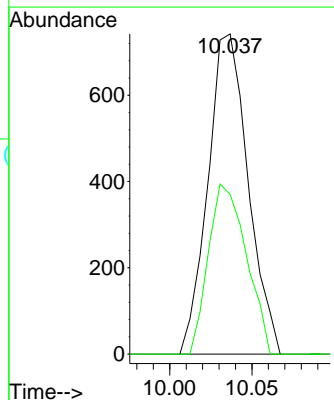
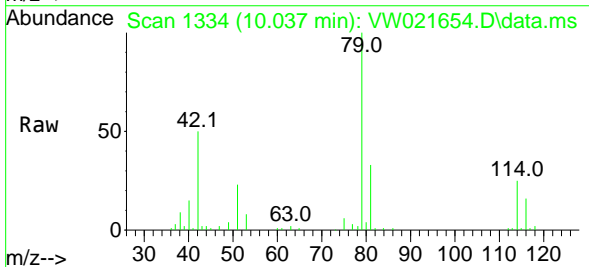


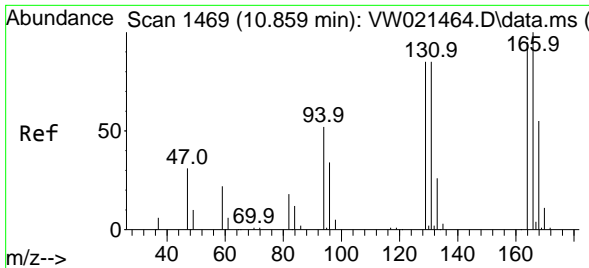
Tgt Ion: 63 Resp: 4578  
 Ion Ratio Lower Upper  
 63 100  
 112 0.0 3.2 4.8#



#39  
 cis-1,3-Dichloropropene  
 Concen: 0.567 ug/L  
 RT: 10.037 min Scan# 1334  
 Delta R.T. -0.036 min  
 Lab File: VW021654.D  
 Acq: 25 Dec 2021 18:33

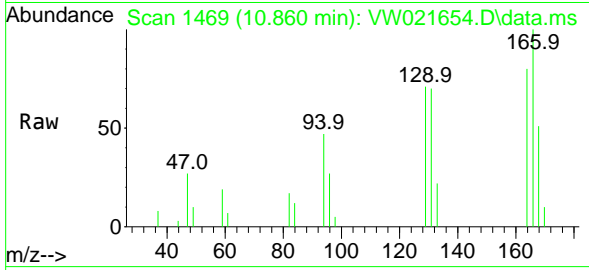
Tgt Ion: 75 Resp: 1263  
 Ion Ratio Lower Upper  
 75 100  
 77 49.9 21.8 40.6#



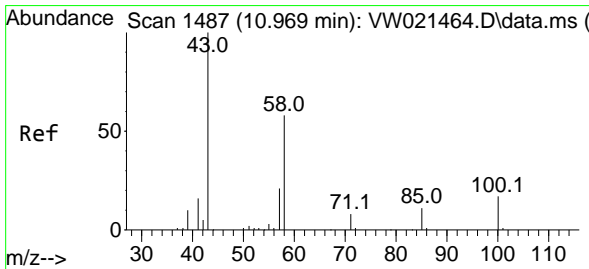
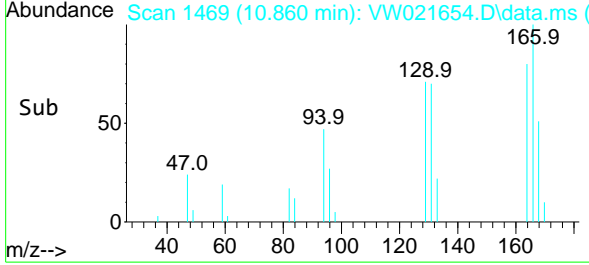
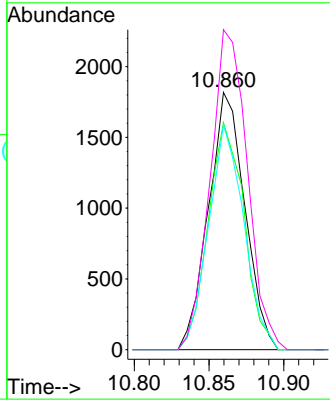


#46  
 Tetrachloroethene  
 Concen: 1.822 ug/L  
 RT: 10.860 min Scan# 1469  
 Delta R.T. 0.000 min  
 Lab File: VW021654.D  
 Acq: 25 Dec 2021 18:33

Instrument : MSVOA\_W  
 ClientSampled :

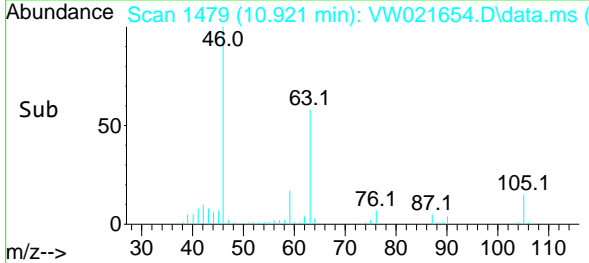
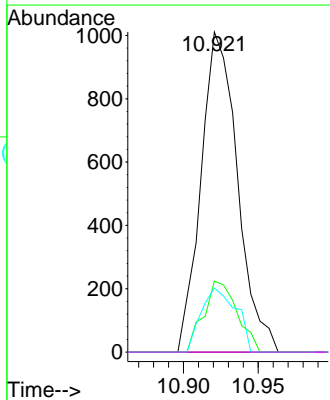
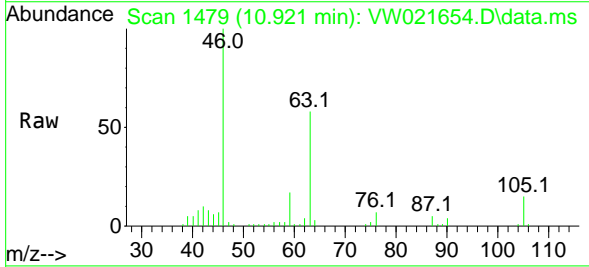


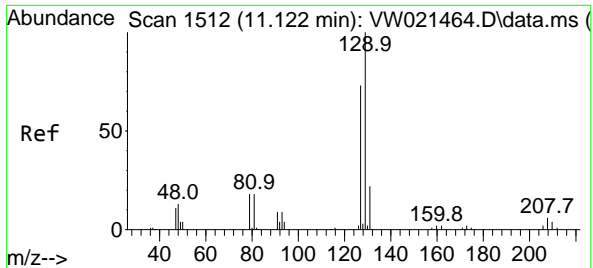
Tgt Ion:164 Resp: 3081  
 Ion Ratio Lower Upper  
 164 100  
 129 88.2 65.5 121.7  
 131 87.5 59.7 110.9  
 166 124.4 88.7 164.7



#48  
 2-Hexanone  
 Concen: 3.073 ug/L  
 RT: 10.921 min Scan# 1479  
 Delta R.T. -0.049 min  
 Lab File: VW021654.D  
 Acq: 25 Dec 2021 18:33

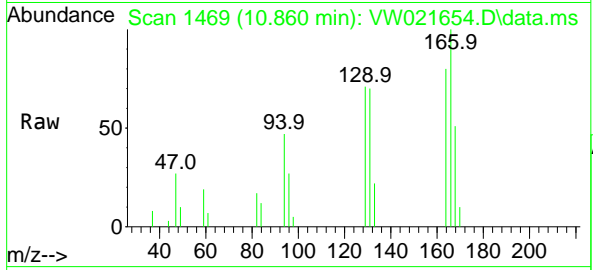
Tgt Ion: 43 Resp: 1717  
 Ion Ratio Lower Upper  
 43 100  
 58 20.3 40.2 60.2#  
 57 19.1 14.3 21.5  
 100 0.0 8.0 12.0#





#49  
 Dibromochloromethane  
 Concen: 1.784 ug/L  
 RT: 10.860 min Scan# 14  
 Delta R.T. -0.268 min  
 Lab File: VW021654.D  
 Acq: 25 Dec 2021 18:33

Instrument :  
 MSVOA\_W  
 ClientSampleId :



Tgt Ion:129 Resp: 2546  
 Ion Ratio Lower Upper  
 129 100  
 127 0.0 55.7 103.5#

