

Data Path : Z:\VOASRV\HPCHEM1\MSVOA W\DATA\VW122718\  
 Data File : VW007956.D  
 Acq On : 27 Dec 2018 07:36  
 Operator : SY/AP  
 Sample : J6507-03  
 Misc : 5.72G/10ML/MSVOA W/SOIL  
 ALS Vial : 1 Sample Multiplier: 1

Instrument :  
 MSVOA\_W  
 ClientSampleId :  
 BF000

## Integration Parameters: LSCINT.P

Integrator: RTE  
 Smoothing : OFF  
 Sampling : 1  
 Start Thrs: 0.2  
 Stop Thrs : 0

Filtering: 5  
 Min Area: 0 % of largest Peak  
 Max Peaks: 100  
 Peak Location: TOP

If leading or trailing edge < 100 prefer < Baseline drop else tangent >  
 Peak separation: 5

Method : Z:\VOASRV\HPCHEM1\MSVOA\_W\METHOD\SOM2WLM122618S.M  
 Title : VOC Analysis

Signal : TIC

peak #	R.T. min	first scan	max scan	last scan	PK TY	peak height	corr. area	corr. % max.	% of total
1	2.056	23	25	29	rVV2	99	120	0.01%	0.003%
2	2.160	39	42	49	rVV3	1207	2323	0.13%	0.062%
3	2.361	68	75	88	rBV	15667	35690	1.95%	0.957%
4	2.471	91	93	94	rBV	118	121	0.01%	0.003%
5	2.501	94	98	100	rVB2	196	262	0.01%	0.007%
6	2.532	100	103	105	rBV	164	211	0.01%	0.006%
7	2.806	147	148	151	rBV	111	129	0.01%	0.003%
8	2.898	153	163	176	rBV	10152	28456	1.55%	0.763%
9	2.983	176	177	179	rVV	393	217	0.01%	0.006%
10	3.007	179	181	183	rVV2	136	124	0.01%	0.003%
11	3.026	183	184	186	rVB	156	111	0.01%	0.003%
12	3.062	186	190	192	rBV	132	200	0.01%	0.005%
13	3.087	192	194	197	rVB2	119	116	0.01%	0.003%
14	3.129	197	201	202	rBV2	152	170	0.01%	0.005%
15	3.178	207	209	212	rBV2	138	181	0.01%	0.005%
16	3.312	229	231	234	rVB	99	125	0.01%	0.003%
17	3.404	244	246	249	rVB	155	150	0.01%	0.004%
18	3.446	249	253	254	rBV	124	187	0.01%	0.005%
19	3.550	267	270	273	rVB	112	170	0.01%	0.005%
20	3.855	315	320	326	rVB2	341	647	0.04%	0.017%
21	4.013	336	346	358	rBV2	36248	113848	6.21%	3.051%
22	4.123	358	364	374	rVB	3304	9144	0.50%	0.245%
23	4.909	486	493	494	rBV3	584	1005	0.05%	0.027%
24	7.080	841	849	855	rBV	6577	20151	1.10%	0.540%
25	7.135	855	858	859	rBV3	1349	1591	0.09%	0.043%
26	7.647	931	942	953	rBB	55555	135558	7.39%	3.633%
27	8.275	1034	1045	1060	rBB2	102714	319311	17.41%	8.558%
28	8.842	1129	1138	1148	rBV	106351	204394	11.14%	5.478%
29	9.037	1166	1170	1174	rBB	479	604	0.03%	0.016%
30	9.092	1175	1179	1183	rBB3	633	997	0.05%	0.027%
31	9.274	1200	1209	1218	rBB	67110	132061	7.20%	3.540%
32	9.890	1306	1310	1313	rBB	466	658	0.04%	0.018%
33	10.037	1327	1334	1341	rBV	36993	67378	3.67%	1.806%
34	10.250	1367	1369	1372	rBB	123	117	0.01%	0.003%

Data Path : Z:\VOASRV\HPCHEM1\MSVOA W\DATA\VW122718\  
 Data File : VW007956.D  
 Acq On : 27 Dec 2018 07:36  
 Operator : SY/AP  
 Sample : J6507-03  
 Misc : 5.72G/10ML/MSVOA W/SOIL  
 ALS Vial : 1 Sample Multiplier: 1

Instrument :  
 MSVOA\_W  
 ClientSampleId :  
 BF000

## Integration Parameters: LSCINT.P

Integrator: RTE  
 Smoothing : OFF  
 Sampling : 1  
 Start Thrs: 0.2  
 Stop Thrs : 0

Filtering: 5  
 Min Area: 0 % of largest Peak  
 Max Peaks: 100  
 Peak Location: TOP

If leading or trailing edge < 100 prefer < Baseline drop else tangent >  
 Peak separation: 5

Method : Z:\VOASRV\HPCHEM1\MSVOA\_W\METHOD\SOM2WLM122618S.M  
 Title : VOC Analysis

35	10.323	1373	1381	1389	rBV	125636	222944	12.15%	5.975%
36	10.390	1389	1392	1397	rVB2	1047	1581	0.09%	0.042%
37	10.579	1416	1423	1430	rBB	26156	44060	2.40%	1.181%
38	10.707	1439	1444	1450	rBB	894	1368	0.07%	0.037%
39	10.866	1461	1470	1476	rBV	1029510	1834529	100.00%	49.170%
40	10.927	1476	1480	1492	rVB3	30516	58661	3.20%	1.572%
41	11.067	1498	1503	1509	rBB2	1683	2693	0.15%	0.072%
42	11.445	1560	1565	1570	rBB2	1398	1922	0.10%	0.052%
43	11.634	1589	1596	1605	rBB	114249	193542	10.55%	5.187%
44	11.713	1607	1609	1614	rVB2	158	226	0.01%	0.006%
45	11.847	1626	1631	1634	rBB	428	711	0.04%	0.019%
46	12.170	1682	1684	1685	rBB	191	124	0.01%	0.003%
47	12.615	1752	1757	1763	rBB3	3071	4624	0.25%	0.124%
48	12.695	1764	1770	1777	rBB	45021	70654	3.85%	1.894%
49	12.768	1779	1782	1785	rBB	124	162	0.01%	0.004%
50	12.938	1806	1810	1815	rBB	983	1057	0.06%	0.028%
51	13.298	1867	1869	1874	rBB3	529	796	0.04%	0.021%
52	13.560	1906	1912	1920	rVB	68017	108818	5.93%	2.917%
53	13.640	1920	1925	1926	rBV	200	297	0.02%	0.008%
54	13.652	1926	1927	1933	rVV	364	561	0.03%	0.015%
55	13.707	1933	1936	1940	rVB	237	358	0.02%	0.010%
56	13.816	1951	1954	1955	rBV	628	609	0.03%	0.016%
57	13.859	1955	1961	1969	rVV	51355	87228	4.75%	2.338%
58	13.914	1969	1970	1972	rVV	858	687	0.04%	0.018%
59	13.950	1975	1976	1980	rVB	421	360	0.02%	0.010%
60	13.999	1980	1984	1986	rBV3	645	891	0.05%	0.024%
61	14.036	1986	1990	1992	rVV2	629	1103	0.06%	0.030%
62	14.085	1992	1998	2003	rVV2	2021	4200	0.23%	0.113%
63	14.121	2003	2004	2007	rVB2	270	233	0.01%	0.006%
64	14.200	2012	2017	2022	rBB4	729	1369	0.07%	0.037%
65	14.255	2023	2026	2029	rBB	141	179	0.01%	0.005%
66	14.347	2038	2041	2045	rBV	219	295	0.02%	0.008%
67	14.731	2099	2104	2109	rBB3	1051	1454	0.08%	0.039%
68	15.139	2168	2171	2174	rBB	143	173	0.01%	0.005%
69	15.261	2188	2191	2192	rBV	154	176	0.01%	0.005%
70	15.450	2218	2222	2225	rBB	217	386	0.02%	0.010%
71	15.505	2228	2231	2233	rVV	200	271	0.01%	0.007%

Data Path : Z:\VOASRV\HPCHEM1\MSVOA W\DATA\VW122718\  
 Data File : VW007956.D  
 Acq On : 27 Dec 2018 07:36  
 Operator : SY/AP  
 Sample : J6507-03  
 Misc : 5.72G/10ML/MSVOA W/SOIL  
 ALS Vial : 1 Sample Multiplier: 1

Instrument :  
 MSVOA\_W  
 ClientSampleId :  
 BF000

## Integration Parameters: LSCINT.P

Integrator: RTE  
 Smoothing : OFF  
 Sampling : 1  
 Start Thrs: 0.2  
 Stop Thrs : 0

Filtering: 5  
 Min Area: 0 % of largest Peak  
 Max Peaks: 100  
 Peak Location: TOP

If leading or trailing edge < 100 prefer < Baseline drop else tangent >  
 Peak separation: 5

Method : Z:\VOASRV\HPCHEM1\MSVOA\_W\METHOD\SOM2WLM122618S.M  
 Title : VOC Analysis

72	15.536	2235	2236	2238	rVV	198	163	0.01%	0.004%
73	15.560	2238	2240	2242	rVB	164	126	0.01%	0.003%
74	15.596	2242	2246	2248	rBV	85	138	0.01%	0.004%
75	15.694	2259	2262	2263	rVV	117	113	0.01%	0.003%
76	15.773	2272	2275	2276	rBV	140	145	0.01%	0.004%
77	15.828	2281	2284	2287	rBV	131	241	0.01%	0.006%
78	15.859	2287	2289	2290	rVV	212	142	0.01%	0.004%
79	15.920	2296	2299	2301	rBV	150	147	0.01%	0.004%
80	15.944	2301	2303	2304	rVV	107	113	0.01%	0.003%
81	15.987	2308	2310	2311	rVV	171	150	0.01%	0.004%
82	16.023	2311	2316	2317	rVV	195	245	0.01%	0.007%
83	16.048	2317	2320	2324	rVV	109	220	0.01%	0.006%
84	16.090	2324	2327	2329	rVV	201	226	0.01%	0.006%
85	16.145	2335	2336	2340	rVV	162	178	0.01%	0.005%
86	16.194	2343	2344	2347	rVV	169	184	0.01%	0.005%
87	16.237	2347	2351	2353	rVB	174	194	0.01%	0.005%
88	16.267	2353	2356	2357	rBV	113	121	0.01%	0.003%
89	16.291	2357	2360	2363	rVB	108	157	0.01%	0.004%
90	16.334	2364	2367	2370	rBB	218	242	0.01%	0.006%
91	16.389	2373	2376	2380	rVB	184	264	0.01%	0.007%
92	16.456	2383	2387	2388	rBV	147	173	0.01%	0.005%
93	16.487	2390	2392	2394	rVV	174	183	0.01%	0.005%
94	16.511	2394	2396	2398	rVB	195	170	0.01%	0.005%
95	16.566	2401	2405	2406	rBV	158	171	0.01%	0.005%
96	16.615	2410	2413	2416	rBB	126	176	0.01%	0.005%
97	16.645	2416	2418	2421	rBB	171	208	0.01%	0.006%
98	16.700	2421	2427	2428	rBV	153	253	0.01%	0.007%
99	16.712	2428	2429	2432	rVV	116	128	0.01%	0.003%
100	16.767	2434	2438	2439	rVB	145	186	0.01%	0.005%

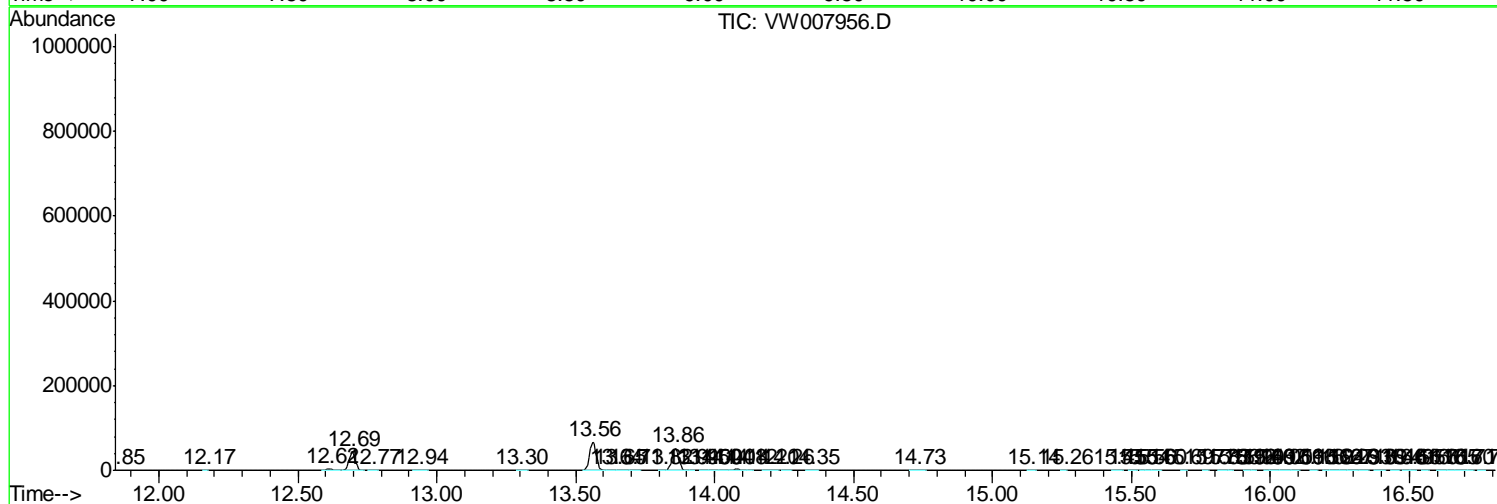
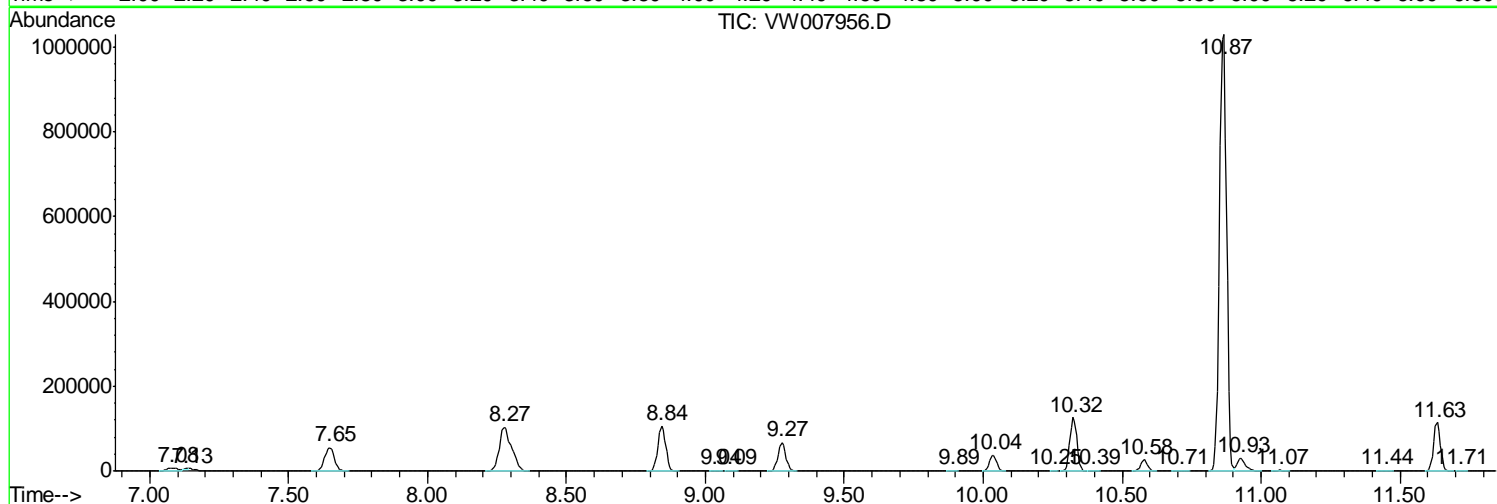
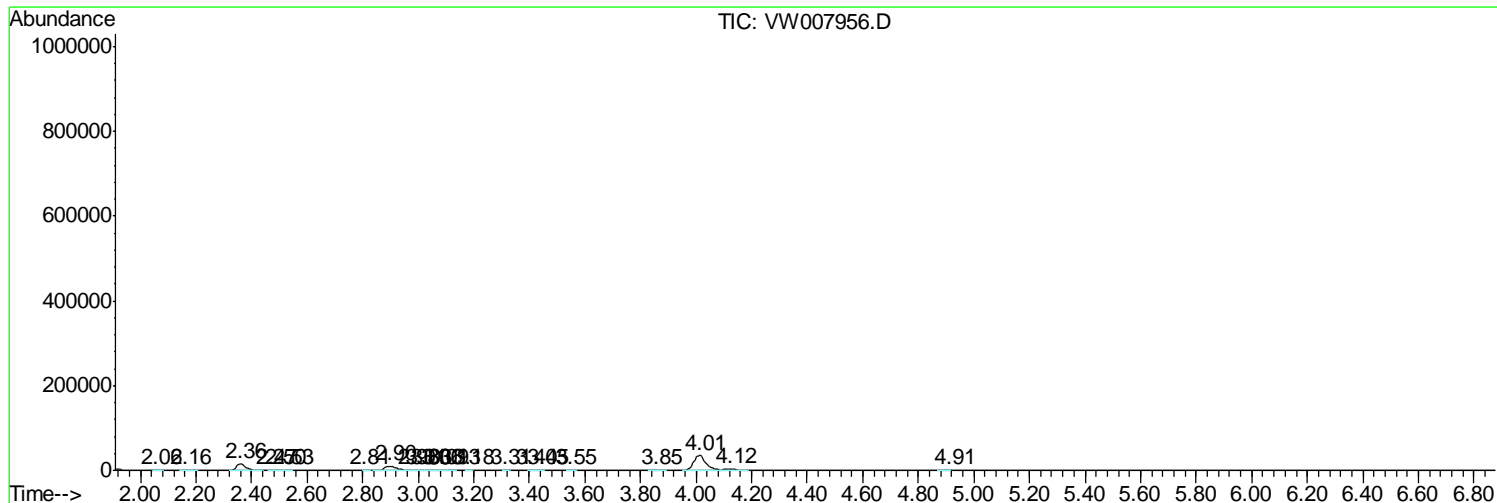
Sum of corrected areas: 3730986

Data Path : Z:\VOASRV\HPCHEM1\MSVOA W\DATA\VW122718\  
 Data File : VW007956.D  
 Acq On : 27 Dec 2018 07:36  
 Operator : SY/AP  
 Sample : J6507-03  
 Misc : 5.72G/10ML/MSVOA W/SOIL  
 ALS Vial : 1 Sample Multiplier: 1

**Instrument :**  
 MSVOA\_W  
**ClientSampleId :**  
 BF000

Quant Method : Z:\VOASRV\HPCHEM1\MSVOA\_W\METHOD\SOM2WLM122618S.M  
 Quant Title : VOC Analysis

TIC Library : C:\DATABASE\NIST11.L  
 TIC Integration Parameters: LSCINT.P



Data Path : Z:\VOASRV\HPCHEM1\MSVOA\_W\DATA\VW122718\  
Data File : VW007956.D  
Acq On : 27 Dec 2018 07:36  
Operator : SY/AP  
Sample : J6507-03  
Misc : 5.72G/10ML/MSVOA\_W/SOIL  
ALS Vial : 1 Sample Multiplier: 1

Instrument :  
MSVOA\_W  
ClientSampleId :  
BF000

Quant Method : Z:\VOASRV\HPCHEM1\MSVOA\_W\METHOD\SOM2WLM122618S.M  
Quant Title : VOC Analysis

TIC Library : C:\DATABASE\NIST11.L  
TIC Integration Parameters: LSCINT.P

No Library Search Compounds Detected

\*\*\*\*\*

Data Path : Z:\VOASRV\HPCHEM1\MSVOA\_W\DATA\VW122718\  
Data File : VW007956.D  
Acq On : 27 Dec 2018 07:36  
Operator : SY/AP  
Sample : J6507-03  
Misc : 5.72G/10ML/MSVOA\_W/SOIL  
ALS Vial : 1 Sample Multiplier: 1

Instrument :  
MSVOA\_W  
ClientSampleId :  
BF000

Quant Method : Z:\VOASRV\HPCHEM1\MSVOA\_W\METHOD\SOM2WLM122618S.M  
Quant Title : VOC Analysis

TIC Library : C:\DATABASE\NIST11.L  
TIC Integration Parameters: LSCINT.P

TIC Top Hit name	RT	EstConc	Units	Response	--Internal Standard--			
					#	RT	Resp	Conc

---