

Data Path : Z:\VOASRV\HPCHEM1\MSVOA W\DATA\VW011521\
 Data File : VW017907.D
 Acq On : 15 Jan 2021 18:56
 Operator : SY/VA
 Sample : M1099-17
 Misc : 7.50G/10ML/MSVOA W/SOIL
 ALS Vial : 1 Sample Multiplier: 1

Instrument :
 MSVOA_W
 ClientSampleId :
 F1C13

Integration Parameters: LSCINT.P

Integrator: RTE
 Smoothing : OFF
 Sampling : 1
 Start Thrs: 0.2
 Stop Thrs : 0

Filtering: 5
 Min Area: 0 % of largest Peak
 Max Peaks: 100
 Peak Location: TOP

If leading or trailing edge < 100 prefer < Baseline drop else tangent >
 Peak separation: 5

Method : Z:\VOASRV\HPCHEM1\MSVOA_W\METHOD\SOM2WLM122420S.M
 Title : VOC Analysis

Signal : TIC

| peak # | R.T. min | first scan | max scan | last scan | PK TY | peak height | corr. area | corr. % max. | % of total |
|--------|----------|------------|----------|-----------|-------|-------------|------------|--------------|------------|
| 1 | 2.349 | 68 | 73 | 83 | rVB | 115895 | 205539 | 14.01% | 2.269% |
| 2 | 2.885 | 155 | 161 | 170 | rVB | 91342 | 198237 | 13.51% | 2.189% |
| 3 | 3.355 | 237 | 238 | 241 | rBV3 | 594 | 628 | 0.04% | 0.007% |
| 4 | 3.489 | 258 | 260 | 261 | rBV2 | 986 | 736 | 0.05% | 0.008% |
| 5 | 3.745 | 300 | 302 | 307 | rVB4 | 851 | 1145 | 0.08% | 0.013% |
| 6 | 3.849 | 318 | 319 | 322 | rBV2 | 520 | 347 | 0.02% | 0.004% |
| 7 | 3.910 | 328 | 329 | 332 | rVB3 | 720 | 542 | 0.04% | 0.006% |
| 8 | 4.019 | 336 | 347 | 359 | rVV | 148413 | 446608 | 30.44% | 4.931% |
| 9 | 4.324 | 395 | 397 | 399 | rBV3 | 528 | 447 | 0.03% | 0.005% |
| 10 | 4.385 | 399 | 407 | 408 | rBV4 | 1743 | 3295 | 0.22% | 0.036% |
| 11 | 4.525 | 427 | 430 | 432 | rVB2 | 512 | 462 | 0.03% | 0.005% |
| 12 | 4.556 | 432 | 435 | 436 | rBV2 | 304 | 309 | 0.02% | 0.003% |
| 13 | 4.623 | 439 | 446 | 451 | rBV5 | 738 | 1365 | 0.09% | 0.015% |
| 14 | 4.672 | 452 | 454 | 457 | rBV4 | 422 | 361 | 0.02% | 0.004% |
| 15 | 4.812 | 474 | 477 | 478 | rBV2 | 611 | 408 | 0.03% | 0.005% |
| 16 | 4.915 | 481 | 494 | 508 | rBV4 | 15811 | 56730 | 3.87% | 0.626% |
| 17 | 5.019 | 508 | 511 | 514 | rVB3 | 604 | 526 | 0.04% | 0.006% |
| 18 | 5.050 | 514 | 516 | 518 | rBV2 | 541 | 434 | 0.03% | 0.005% |
| 19 | 5.129 | 528 | 529 | 533 | rVB3 | 529 | 376 | 0.03% | 0.004% |
| 20 | 5.159 | 533 | 534 | 536 | rBV2 | 463 | 398 | 0.03% | 0.004% |
| 21 | 5.245 | 547 | 548 | 551 | rVB2 | 550 | 392 | 0.03% | 0.004% |
| 22 | 5.281 | 551 | 554 | 555 | rBV2 | 404 | 504 | 0.03% | 0.006% |
| 23 | 5.367 | 565 | 568 | 570 | rBV4 | 346 | 446 | 0.03% | 0.005% |
| 24 | 5.403 | 572 | 574 | 575 | rBV | 865 | 560 | 0.04% | 0.006% |
| 25 | 5.531 | 593 | 595 | 597 | rVB2 | 371 | 346 | 0.02% | 0.004% |
| 26 | 5.684 | 618 | 620 | 622 | rBV3 | 613 | 522 | 0.04% | 0.006% |
| 27 | 5.793 | 636 | 638 | 642 | rVB3 | 991 | 1304 | 0.09% | 0.014% |
| 28 | 5.830 | 642 | 644 | 646 | rBV2 | 617 | 707 | 0.05% | 0.008% |
| 29 | 5.940 | 658 | 662 | 670 | rVB7 | 2808 | 6776 | 0.46% | 0.075% |
| 30 | 6.116 | 686 | 691 | 693 | rBV5 | 759 | 993 | 0.07% | 0.011% |
| 31 | 6.153 | 696 | 697 | 700 | rBV2 | 386 | 459 | 0.03% | 0.005% |
| 32 | 6.214 | 705 | 707 | 708 | rVB2 | 585 | 323 | 0.02% | 0.004% |
| 33 | 6.244 | 710 | 712 | 713 | rBV2 | 416 | 312 | 0.02% | 0.003% |
| 34 | 6.263 | 713 | 715 | 716 | rBV2 | 349 | 293 | 0.02% | 0.003% |

Data Path : Z:\VOASRV\HPCHEM1\MSVOA W\DATA\VW011521\
 Data File : VW017907.D
 Acq On : 15 Jan 2021 18:56
 Operator : SY/VA
 Sample : M1099-17
 Misc : 7.50G/10ML/MSVOA W/SOIL
 ALS Vial : 1 Sample Multiplier: 1

Instrument :
 MSVOA_W
 ClientSampleId :
 F1C13

Integration Parameters: LSCINT.P

Integrator: RTE
 Smoothing : OFF
 Sampling : 1
 Start Thrs: 0.2
 Stop Thrs : 0

Filtering: 5
 Min Area: 0 % of largest Peak
 Max Peaks: 100
 Peak Location: TOP

If leading or trailing edge < 100 prefer < Baseline drop else tangent >
 Peak separation: 5

Method : Z:\VOASRV\HPCHEM1\MSVOA_W\METHOD\SOM2WLM122420S.M
 Title : VOC Analysis

| | | | | | | | | | |
|----|-------|------|------|------|------|--------|---------|--------|---------|
| 35 | 6.275 | 716 | 717 | 718 | rBV | 985 | 565 | 0.04% | 0.006% |
| 36 | 6.482 | 749 | 751 | 753 | rVB3 | 512 | 327 | 0.02% | 0.004% |
| 37 | 6.531 | 758 | 759 | 762 | rVB3 | 440 | 407 | 0.03% | 0.004% |
| 38 | 6.555 | 762 | 763 | 765 | rBV2 | 594 | 395 | 0.03% | 0.004% |
| 39 | 6.586 | 767 | 768 | 772 | rVB3 | 835 | 669 | 0.05% | 0.007% |
| 40 | 6.622 | 772 | 774 | 775 | rBV | 526 | 371 | 0.03% | 0.004% |
| 41 | 6.641 | 775 | 777 | 780 | rVB3 | 688 | 628 | 0.04% | 0.007% |
| 42 | 6.696 | 784 | 786 | 789 | rVB2 | 437 | 350 | 0.02% | 0.004% |
| 43 | 6.720 | 789 | 790 | 793 | rBV3 | 456 | 556 | 0.04% | 0.006% |
| 44 | 6.836 | 805 | 809 | 810 | rVB2 | 403 | 424 | 0.03% | 0.005% |
| 45 | 6.872 | 814 | 815 | 817 | rBV2 | 472 | 314 | 0.02% | 0.003% |
| 46 | 6.946 | 822 | 827 | 828 | rBV3 | 423 | 597 | 0.04% | 0.007% |
| 47 | 7.080 | 840 | 849 | 858 | rBV | 27842 | 82349 | 5.61% | 0.909% |
| 48 | 7.342 | 890 | 892 | 895 | rVB4 | 679 | 762 | 0.05% | 0.008% |
| 49 | 7.372 | 895 | 897 | 898 | rBV | 732 | 525 | 0.04% | 0.006% |
| 50 | 7.500 | 916 | 918 | 919 | rBV2 | 455 | 355 | 0.02% | 0.004% |
| 51 | 7.647 | 931 | 942 | 953 | rBV | 220416 | 545535 | 37.18% | 6.023% |
| 52 | 7.939 | 988 | 990 | 992 | rVV3 | 597 | 658 | 0.04% | 0.007% |
| 53 | 7.964 | 992 | 994 | 998 | rVB3 | 869 | 821 | 0.06% | 0.009% |
| 54 | 8.092 | 1012 | 1015 | 1017 | rBV3 | 333 | 452 | 0.03% | 0.005% |
| 55 | 8.165 | 1024 | 1027 | 1028 | rBV | 616 | 539 | 0.04% | 0.006% |
| 56 | 8.275 | 1032 | 1045 | 1062 | rBV2 | 425812 | 1266025 | 86.28% | 13.979% |
| 57 | 8.525 | 1084 | 1086 | 1090 | rBV3 | 1349 | 1262 | 0.09% | 0.014% |
| 58 | 8.561 | 1090 | 1092 | 1095 | rBV3 | 801 | 749 | 0.05% | 0.008% |
| 59 | 8.622 | 1098 | 1102 | 1106 | rVB6 | 594 | 1084 | 0.07% | 0.012% |
| 60 | 8.665 | 1107 | 1109 | 1110 | rBV2 | 476 | 326 | 0.02% | 0.004% |
| 61 | 8.689 | 1111 | 1113 | 1117 | rVB3 | 837 | 769 | 0.05% | 0.008% |
| 62 | 8.842 | 1129 | 1138 | 1149 | rBV | 398539 | 786405 | 53.60% | 8.683% |
| 63 | 9.049 | 1167 | 1172 | 1173 | rBV4 | 746 | 1254 | 0.09% | 0.014% |
| 64 | 9.085 | 1173 | 1178 | 1183 | rVB5 | 2866 | 4907 | 0.33% | 0.054% |
| 65 | 9.183 | 1192 | 1194 | 1196 | rBV2 | 381 | 414 | 0.03% | 0.005% |
| 66 | 9.207 | 1196 | 1198 | 1200 | rVB3 | 650 | 565 | 0.04% | 0.006% |
| 67 | 9.274 | 1200 | 1209 | 1225 | rBV | 287538 | 586793 | 39.99% | 6.479% |
| 68 | 9.463 | 1238 | 1240 | 1241 | rBV2 | 382 | 292 | 0.02% | 0.003% |
| 69 | 9.506 | 1244 | 1247 | 1248 | rBV3 | 674 | 546 | 0.04% | 0.006% |
| 70 | 9.585 | 1257 | 1260 | 1262 | rVB | 809 | 672 | 0.05% | 0.007% |
| 71 | 9.604 | 1262 | 1263 | 1265 | rBV2 | 463 | 481 | 0.03% | 0.005% |

Data Path : Z:\VOASRV\HPCHEM1\MSVOA W\DATA\VW011521\
 Data File : VW017907.D
 Acq On : 15 Jan 2021 18:56
 Operator : SY/VA
 Sample : M1099-17
 Misc : 7.50G/10ML/MSVOA W/SOIL
 ALS Vial : 1 Sample Multiplier: 1

Instrument :
 MSVOA_W
 ClientSampleId :
 F1C13

Integration Parameters: LSCINT.P

Integrator: RTE
 Smoothing : OFF
 Sampling : 1
 Start Thrs: 0.2
 Stop Thrs : 0

Filtering: 5
 Min Area: 0 % of largest Peak
 Max Peaks: 100
 Peak Location: TOP

If leading or trailing edge < 100 prefer < Baseline drop else tangent >
 Peak separation: 5

Method : Z:\VOASRV\HPCHEM1\MSVOA_W\METHOD\SOM2WLM122420S.M
 Title : VOC Analysis

| | | | | | | | | | |
|-----|--------|------|------|------|------|--------|---------|---------|---------|
| 72 | 9.622 | 1265 | 1266 | 1269 | rVB3 | 624 | 422 | 0.03% | 0.005% |
| 73 | 9.665 | 1272 | 1273 | 1275 | rBV2 | 936 | 628 | 0.04% | 0.007% |
| 74 | 9.768 | 1288 | 1290 | 1292 | rBV3 | 621 | 436 | 0.03% | 0.005% |
| 75 | 9.854 | 1302 | 1304 | 1307 | rVB2 | 566 | 600 | 0.04% | 0.007% |
| 76 | 9.896 | 1307 | 1311 | 1316 | rBV4 | 1360 | 3047 | 0.21% | 0.034% |
| 77 | 10.036 | 1326 | 1334 | 1341 | rBV | 140832 | 253870 | 17.30% | 2.803% |
| 78 | 10.177 | 1356 | 1357 | 1359 | rVB2 | 486 | 316 | 0.02% | 0.003% |
| 79 | 10.238 | 1359 | 1367 | 1368 | rBV6 | 862 | 1566 | 0.11% | 0.017% |
| 80 | 10.323 | 1373 | 1381 | 1389 | rBV | 587863 | 1010777 | 68.89% | 11.160% |
| 81 | 10.579 | 1416 | 1423 | 1430 | rBV | 85580 | 145458 | 9.91% | 1.606% |
| 82 | 10.658 | 1433 | 1436 | 1438 | rBV4 | 1111 | 1360 | 0.09% | 0.015% |
| 83 | 10.744 | 1447 | 1450 | 1452 | rBV4 | 864 | 1306 | 0.09% | 0.014% |
| 84 | 10.792 | 1455 | 1458 | 1461 | rBV5 | 1007 | 1408 | 0.10% | 0.016% |
| 85 | 10.841 | 1462 | 1466 | 1471 | rVB4 | 2252 | 3679 | 0.25% | 0.041% |
| 86 | 10.927 | 1474 | 1480 | 1495 | rBV | 94560 | 182970 | 12.47% | 2.020% |
| 87 | 11.512 | 1573 | 1576 | 1580 | rBV5 | 907 | 1461 | 0.10% | 0.016% |
| 88 | 11.634 | 1588 | 1596 | 1608 | rBV2 | 543309 | 1467304 | 100.00% | 16.201% |
| 89 | 11.829 | 1623 | 1628 | 1639 | rBV2 | 8987 | 20412 | 1.39% | 0.225% |
| 90 | 11.987 | 1653 | 1654 | 1656 | rBV2 | 669 | 542 | 0.04% | 0.006% |
| 91 | 12.408 | 1722 | 1723 | 1727 | rVB4 | 945 | 787 | 0.05% | 0.009% |
| 92 | 12.609 | 1752 | 1756 | 1762 | rVB3 | 3179 | 5826 | 0.40% | 0.064% |
| 93 | 12.695 | 1762 | 1770 | 1778 | rBV | 181487 | 308409 | 21.02% | 3.405% |
| 94 | 12.859 | 1793 | 1797 | 1801 | rBV5 | 1645 | 2743 | 0.19% | 0.030% |
| 95 | 13.249 | 1858 | 1861 | 1865 | rBV5 | 2886 | 4456 | 0.30% | 0.049% |
| 96 | 13.499 | 1896 | 1902 | 1906 | rBV | 64423 | 108365 | 7.39% | 1.197% |
| 97 | 13.560 | 1906 | 1912 | 1922 | rVB2 | 390317 | 708571 | 48.29% | 7.824% |
| 98 | 13.749 | 1939 | 1943 | 1946 | rBV5 | 2362 | 4050 | 0.28% | 0.045% |
| 99 | 13.853 | 1953 | 1960 | 1972 | rVB | 345363 | 563084 | 38.38% | 6.217% |
| 100 | 14.066 | 1991 | 1995 | 2004 | rVB | 17915 | 30002 | 2.04% | 0.331% |

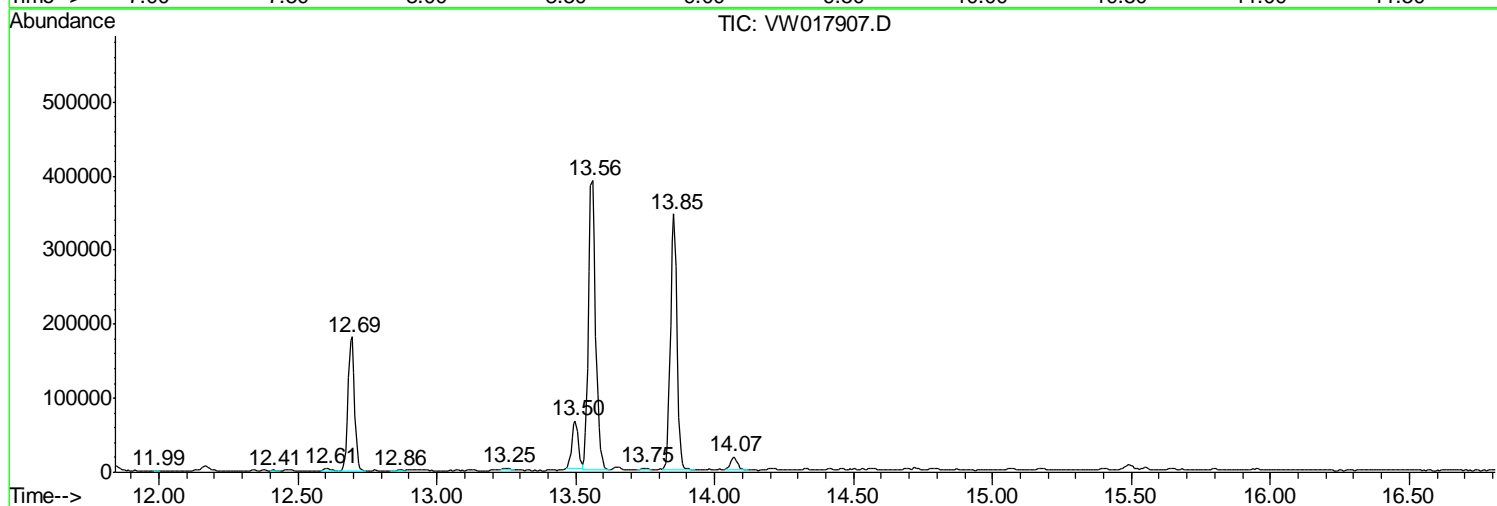
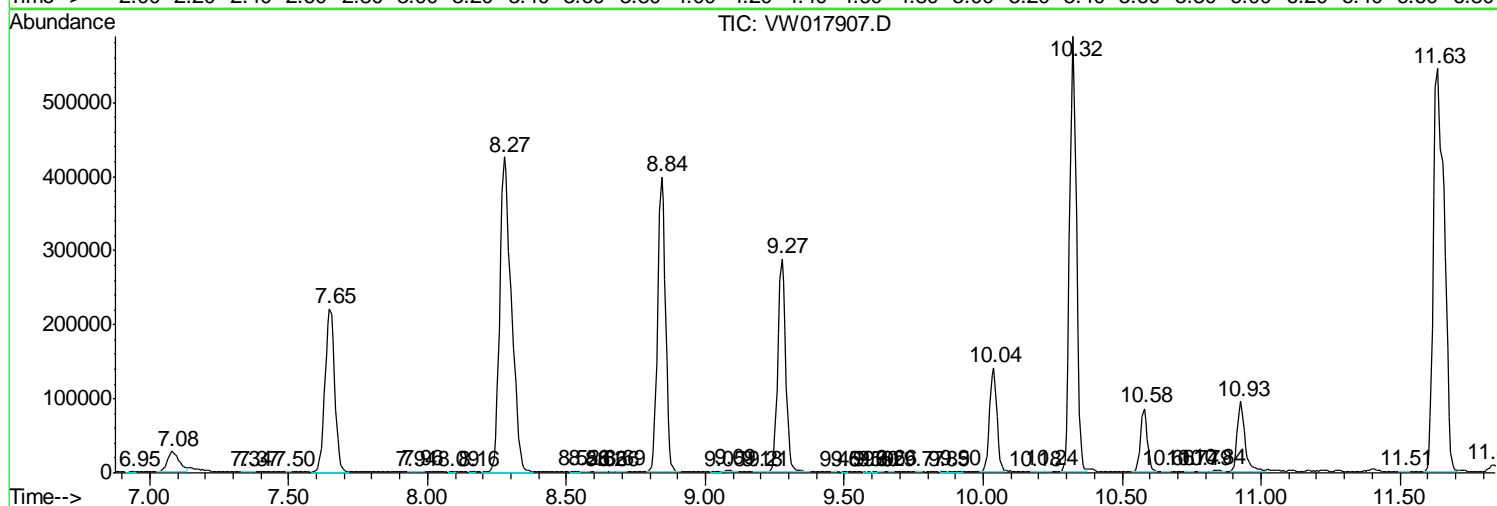
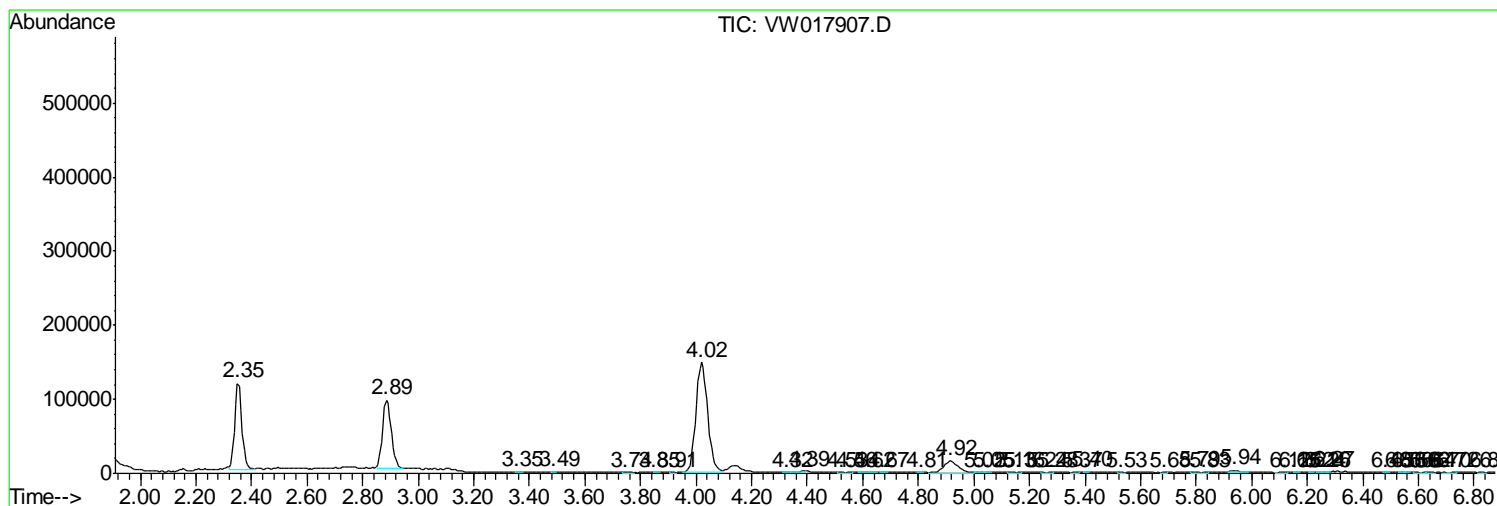
Sum of corrected areas: 9056828

Data Path : Z:\VOASRV\HPCHEM1\MSVOA W\DATA\VW011521\
 Data File : VW017907.D
 Acq On : 15 Jan 2021 18:56
 Operator : SY/VA
 Sample : M1099-17
 Misc : 7.50G/10ML/MSVOA W/SOIL
 ALS Vial : 1 Sample Multiplier: 1

Instrument :
 MSVOA_W
 ClientSampleId :
 F1C13

Quant Method : Z:\VOASRV\HPCHEM1\MSVOA_W\METHOD\SOM2WLM122420S.M
 Quant Title : VOC Analysis

TIC Library : C:\DATABASE\NIST11.L
 TIC Integration Parameters: LSCINT.P



Data Path : Z:\VOASRV\HPCHEM1\MSVOA_W\DATA\VW011521\
Data File : VW017907.D
Acq On : 15 Jan 2021 18:56
Operator : SY/VA
Sample : M1099-17
Misc : 7.50G/10ML/MSVOA_W/SOIL
ALS Vial : 1 Sample Multiplier: 1

Instrument :
MSVOA_W
ClientSampleId :
F1C13

Quant Method : Z:\VOASRV\HPCHEM1\MSVOA_W\METHOD\SOM2WLM122420S.M
Quant Title : VOC Analysis

TIC Library : C:\DATABASE\NIST11.L
TIC Integration Parameters: LSCINT.P

No Library Search Compounds Detected

Data Path : Z:\VOASRV\HPCHEM1\MSVOA_W\DATA\VW011521\
Data File : VW017907.D
Acq On : 15 Jan 2021 18:56
Operator : SY/VA
Sample : M1099-17
Misc : 7.50G/10ML/MSVOA_W/SOIL
ALS Vial : 1 Sample Multiplier: 1

Instrument :
MSVOA_W
ClientSampleId :
F1C13

Quant Method : Z:\VOASRV\HPCHEM1\MSVOA_W\METHOD\SOM2WLM122420S.M
Quant Title : VOC Analysis

TIC Library : C:\DATABASE\NIST11.L
TIC Integration Parameters: LSCINT.P

| TIC Top Hit name | RT | EstConc | Units | Response | --Internal Standard-- | | | |
|------------------|----|---------|-------|----------|-----------------------|----|------|------|
| | | | | | # | RT | Resp | Conc |
