

Data Path : Z:\voasrv\HPCHEM1\MSVOA\_W\Data\VW011821\  
 Data File : VW017931.D  
 Acq On : 18 Jan 2021 16:19  
 Operator : SY/VA  
 Sample : M1099-21  
 Misc : 8.10G/10ML/MSVOA\_W/SOIL  
 ALS Vial : 18 Sample Multiplier: 1

**Instrument :**  
 MSVOA\_W  
**ClientSampled :**  
 F1C17

**Manual Integrations**  
**APPROVED**  
 MMDadoda  
 1/20/2021 4:58:00 PM

Quant Time: Jan 19 06:57:37 2021  
 Quant Method : Z:\VOASRV\HPCHEM1\MSVOA\_W\METHOD\SOM2WLM011821S.M  
 Quant Title : VOC Analysis  
 QLast Update : Tue Jan 19 06:55:11 2021  
 Response via : Initial Calibration

Compound	R.T.	QIon	Response	Conc	Units	Dev(Min)
<b>Internal Standards</b>						
1) 1,4-Difluorobenzene	8.841	114	375197	25.00	ug/L	0.00
28) Chlorobenzene-d5	11.634	117	308802	25.00	ug/L	0.00
60) 1,4-Dichlorobenzene-d4	13.560	152	102444	25.00	ug/L	0.00
<b>System Monitoring Compounds</b>						
4) Vinyl Chloride-d3	2.355	65	153764	26.11	ug/L	0.00
Spiked Amount	25.000	Range 30 - 150	Recovery =	104.44%		
7) Chloroethane-d5	2.891	69	123488	25.40	ug/L	0.00
Spiked Amount	25.000	Range 30 - 150	Recovery =	101.60%		
10) 1,1-Dichloroethene-d2	4.019	63	193096	18.15	ug/L	0.00
Spiked Amount	25.000	Range 45 - 110	Recovery =	72.60%		
20) 2-Butanone-d5	7.080	46	66928	47.00	ug/L	0.00
Spiked Amount	50.000	Range 20 - 135	Recovery =	94.00%		
24) Chloroform-d	7.647	84	253228	24.73	ug/L	0.00
Spiked Amount	25.000	Range 40 - 150	Recovery =	98.92%		
26) 1,2-Dichloroethane-d4	8.305	65	152507m	26.33	ug/L	0.00
Spiked Amount	25.000	Range 70 - 130	Recovery =	105.32%		
29) Benzene-d6	8.275	84	497011	28.12	ug/L	0.00
Spiked Amount	25.000	Range 20 - 135	Recovery =	112.48%		
33) 1,2-Dichloropropane-d6	9.274	67	144593	28.75	ug/L	0.00
Spiked Amount	25.000	Range 70 - 120	Recovery =	115.00%		
37) Toluene-d8	10.323	98	437480	26.36	ug/L	0.00
Spiked Amount	25.000	Range 30 - 130	Recovery =	105.44%		
38) trans-1,3-Dichloroprop...	10.579	79	58472	25.45	ug/L	0.00
Spiked Amount	25.000	Range 30 - 135	Recovery =	101.80%		
39) 2-Hexanone-d5	10.927	63	48803	54.13	ug/L	0.00
Spiked Amount	50.000	Range 20 - 135	Recovery =	108.26%		
48) 1,1,2,2-Tetrachloroeth...	12.694	84	109372	24.45	ug/L	0.00
Spiked Amount	25.000	Range 45 - 120	Recovery =	97.80%		
61) 1,2-Dichlorobenzene-d4	13.853	152	95332	26.74	ug/L	0.00
Spiked Amount	25.000	Range 75 - 120	Recovery =	106.96%		
<b>Target Compounds</b>						
13) Acetone	4.123	43	53760	53.60	ug/L	95
14) Carbon disulfide	4.391	76	16823	1.10	ug/L	96
16) Methylene chloride	4.915	84	7849m	1.44	ug/L	
22) cis-1,2-Dichloroethene	7.171	96	4363	0.78	ug/L #	80
34) Benzene	8.323	78	21607	1.18	ug/L	100
35) Trichloroethene	9.091	95	17146	3.41	ug/L	92
36) Methylcyclohexane	9.329	83	5041	0.58	ug/L #	68
44) Toluene	10.384	91	14703	0.73	ug/L	89
47) Tetrachloroethene	10.859	164	46958	11.89	ug/L	97
52) Chlorobenzene	11.658	112	402115	30.91	ug/L	95
53) Ethylbenzene	11.731	91	5802	0.25	ug/L	96
54) m,p-Xylene	11.835	106	7895	0.90	ug/L	93
55) o-xylene	12.158	106	3258	0.40	ug/L	64
57) Isopropylbenzene	12.463	105	87768	3.86	ug/L	98
63) 1,3-Dichlorobenzene	13.499	146	43322	6.75	ug/L	95
64) 1,4-Dichlorobenzene	13.578	146	105614	16.38	ug/L	92

(#) = qualifier out of range (m) = manual integration (+) = signals summed

**Instrument :**  
MSVOA\_W  
**ClientSampleId :**  
F1C17

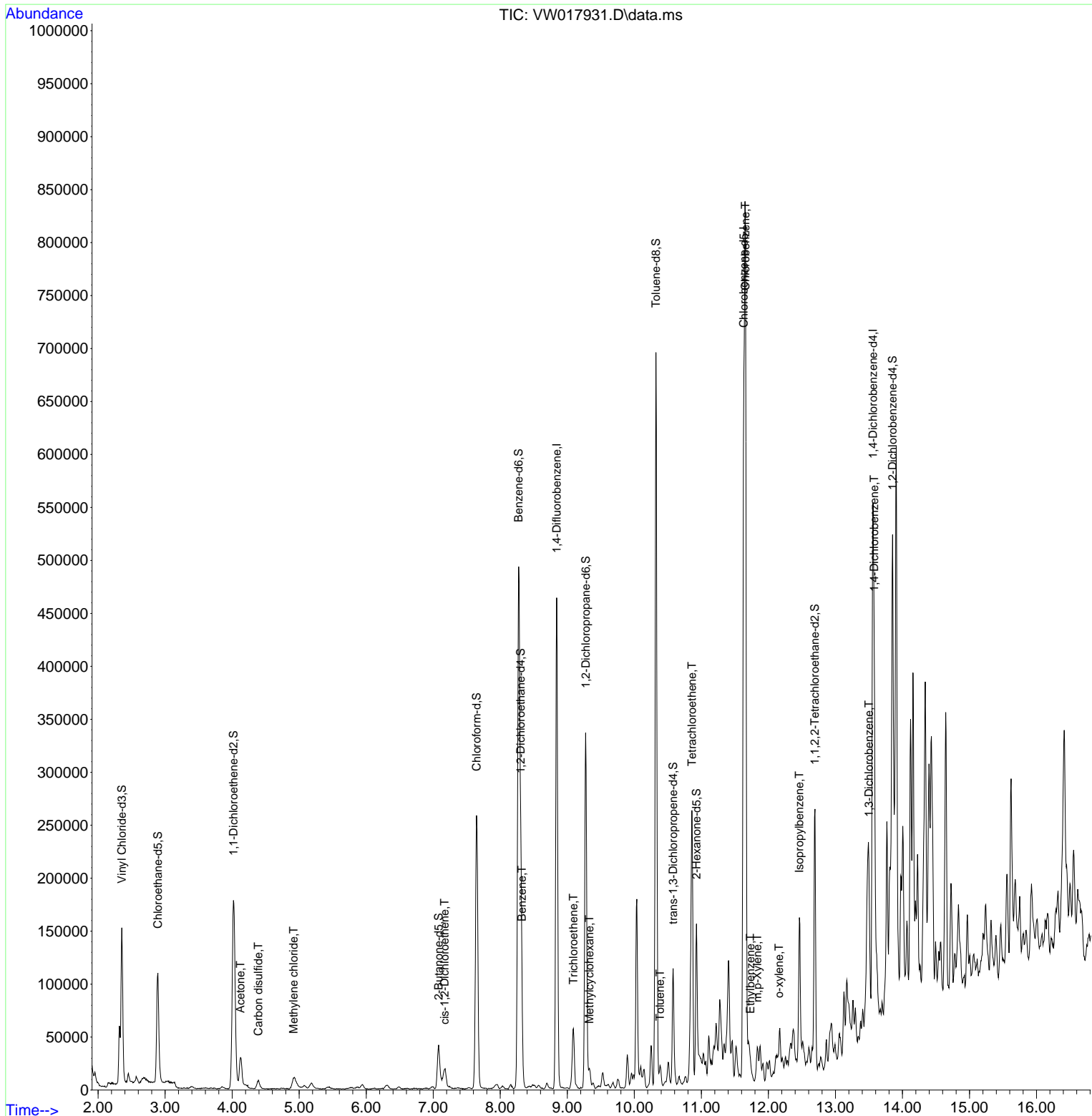
**Manual Integrations**  
**APPROVED**  
MMDadoda  
1/20/2021 4:58:00 PM

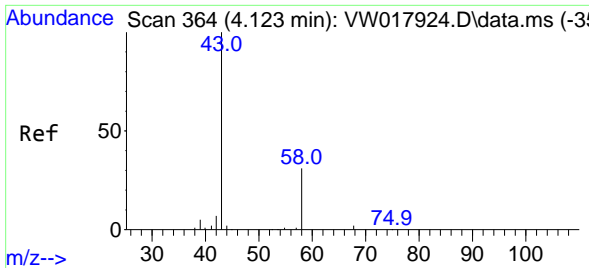
Data Path : Z:\voasrv\HPCHEM1\MSVOA\_W\Data\VW011821\  
 Data File : VW017931.D  
 Acq On : 18 Jan 2021 16:19  
 Operator : SY/VA  
 Sample : M1099-21  
 Misc : 8.10G/10ML/MSVOA\_W/SOIL  
 ALS Vial : 18 Sample Multiplier: 1

Instrument :  
 MSVOA\_W  
 Client Sampled :  
 F1C17

Quant Time: Jan 19 06:57:37 2021  
 Quant Method : Z:\VOASRV\HPCHEM1\MSVOA\_W\METHOD\SOM2WLM011821S.M  
 Quant Title : VOC Analysis  
 QLast Update : Tue Jan 19 06:55:11 2021  
 Response via : Initial Calibration

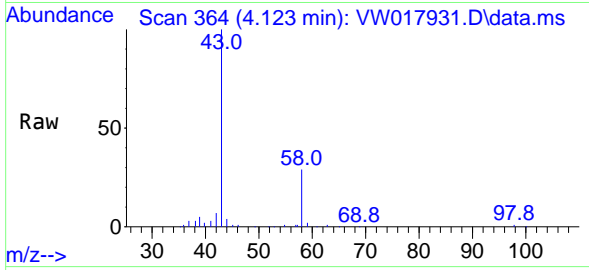
Manual Integrations  
 APPROVED  
 MMDadoda  
 1/20/2021 4:58:00 PM





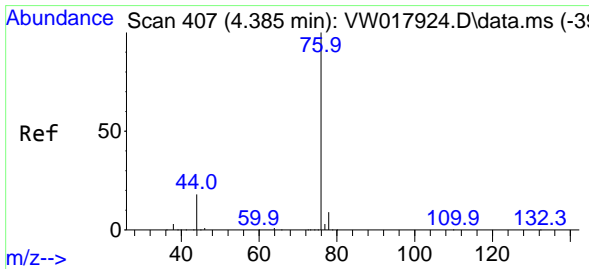
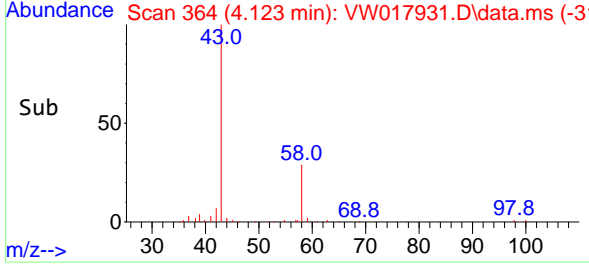
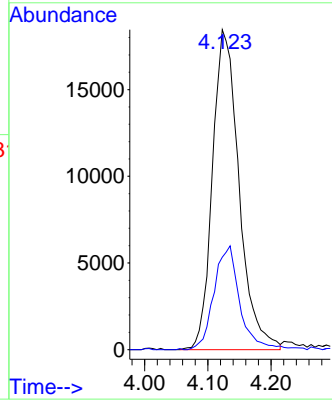
#13  
 Acetone  
 Concen: 53.60 ug/L  
 RT: 4.123 min Scan# 364  
 Delta R.T. -0.000 min  
 Lab File: VW017931.D  
 Acq: 18 Jan 2021 16:19

**Instrument :**  
 MSVOA\_W  
**ClientSampled :**  
 F1C17

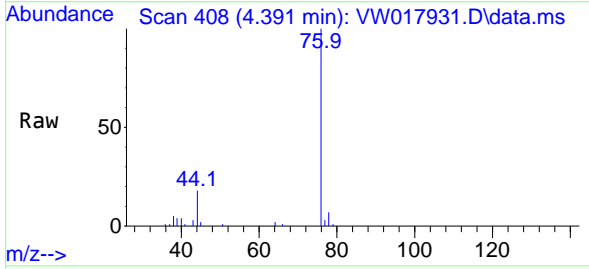


Tgt Ion: 43 Resp: 53760  
 Ion Ratio Lower Upper  
 43 100  
 58 31.3 0.0 68.4

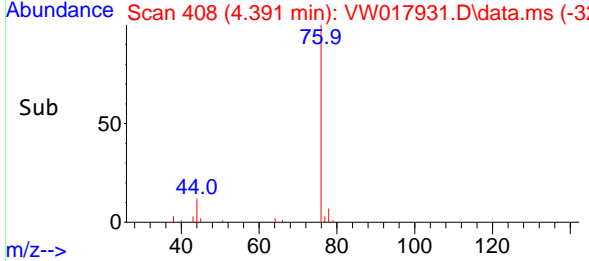
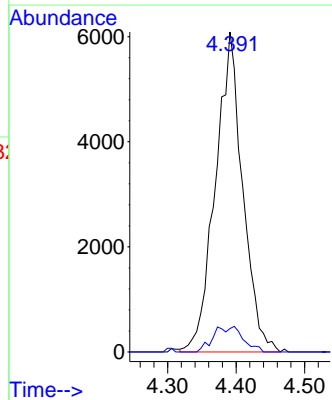
**Manual Integrations**  
**APPROVED**  
 MMDadoda  
 1/20/2021 4:58:00 PM

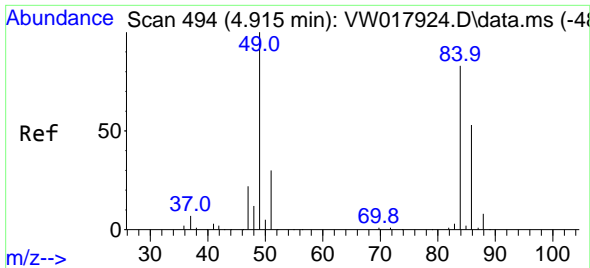


#14  
 Carbon disulfide  
 Concen: 1.10 ug/L  
 RT: 4.391 min Scan# 408  
 Delta R.T. 0.006 min  
 Lab File: VW017931.D  
 Acq: 18 Jan 2021 16:19



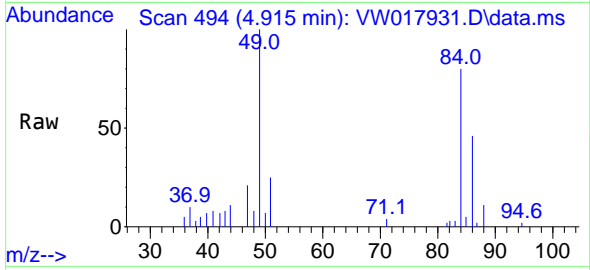
Tgt Ion: 76 Resp: 16823  
 Ion Ratio Lower Upper  
 76 100  
 78 7.3 7.0 10.4





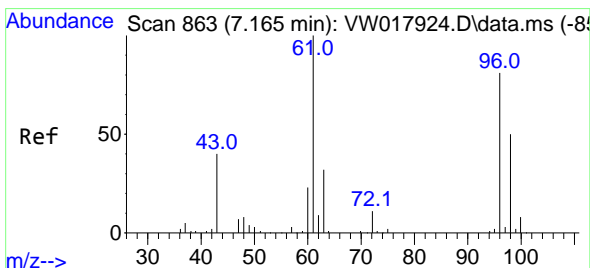
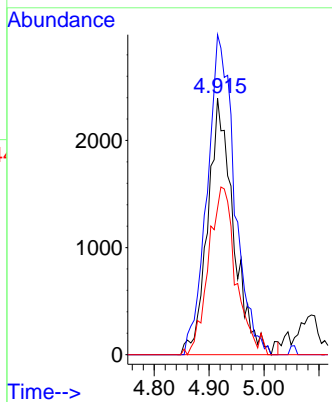
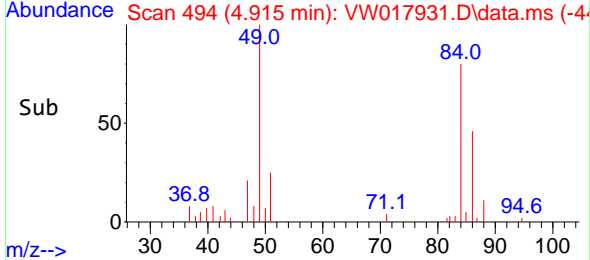
#16  
Methylene chloride  
Concen: 1.44 ug/L m  
RT: 4.915 min Scan# 494  
Delta R.T. -0.000 min  
Lab File: VW017931.D  
Acq: 18 Jan 2021 16:19

**Instrument :**  
MSVOA\_W  
**Client Sampled :**  
F1C17

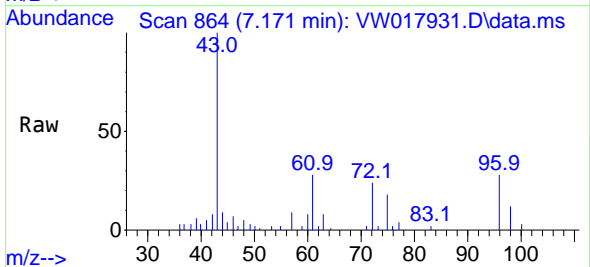


Tgt Ion: 84 Resp: 7849  
Ion Ratio Lower Upper  
84 100  
49 124.7 81.2 150.8  
86 57.1 44.5 82.7

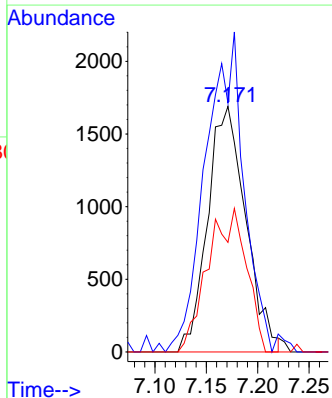
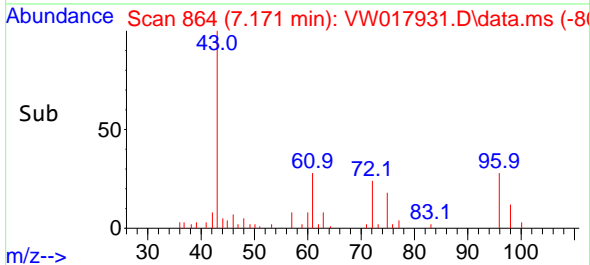
**Manual Integrations**  
**APPROVED**  
MMDadoda  
1/20/2021 4:58:00 PM

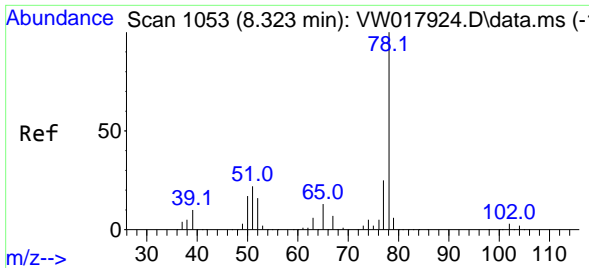


#22  
cis-1,2-Dichloroethene  
Concen: 0.78 ug/L  
RT: 7.171 min Scan# 864  
Delta R.T. 0.006 min  
Lab File: VW017931.D  
Acq: 18 Jan 2021 16:19



Tgt Ion: 96 Resp: 4363  
Ion Ratio Lower Upper  
96 100  
61 101.4 84.6 157.2  
98 44.6 44.7 82.9#





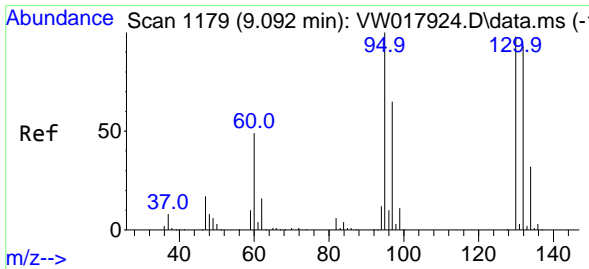
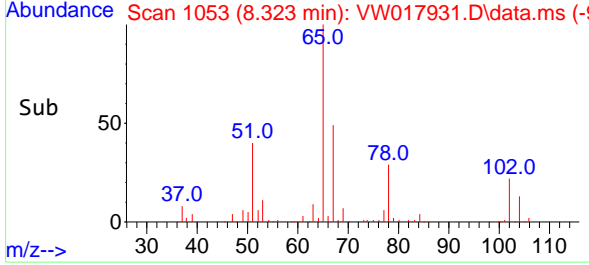
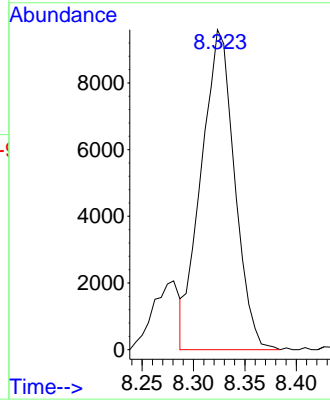
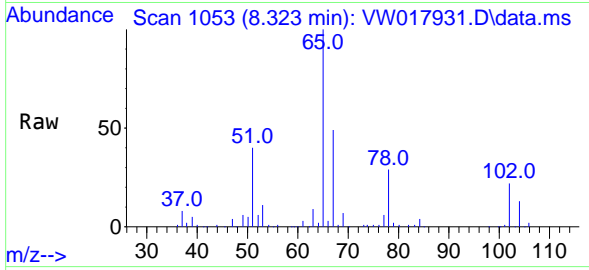
#34  
Benzene  
Concen: 1.18 ug/L  
RT: 8.323 min Scan# 1053  
Delta R.T. -0.000 min  
Lab File: VW017931.D  
Acq: 18 Jan 2021 16:19

Instrument :  
MSVOA\_W  
ClientSampled :  
F1C17

Tgt Ion: 78 Resp: 21607

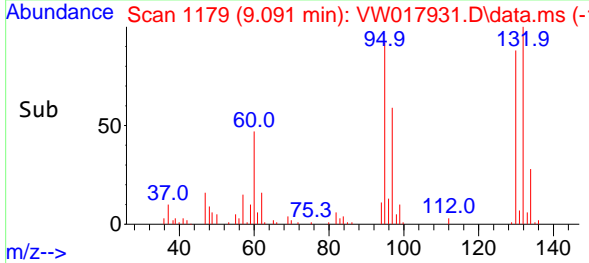
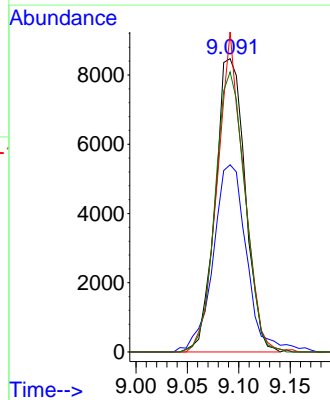
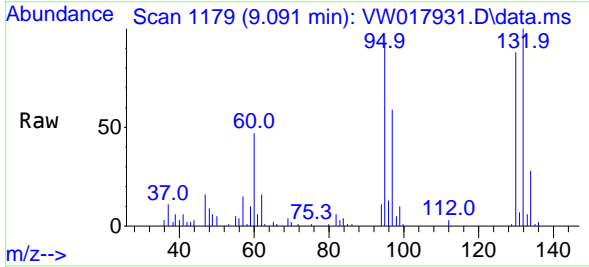
Manual Integrations  
APPROVED

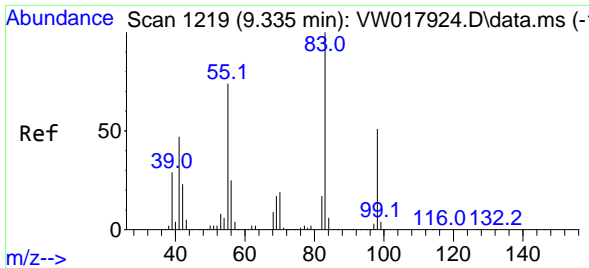
MMDadoda  
1/20/2021 4:58:00 PM



#35  
Trichloroethene  
Concen: 3.41 ug/L  
RT: 9.091 min Scan# 1179  
Delta R.T. -0.000 min  
Lab File: VW017931.D  
Acq: 18 Jan 2021 16:19

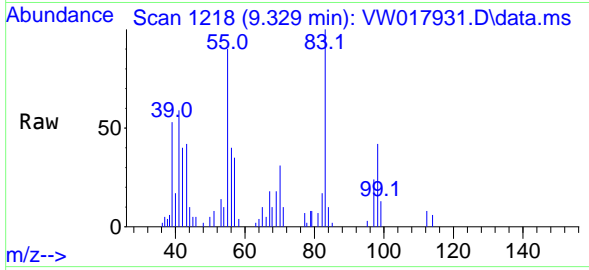
Tgt Ion: 95 Resp: 17146  
Ion Ratio Lower Upper  
95 100  
97 70.3 45.0 83.6  
132 97.1 71.0 131.8  
130 95.7 75.6 140.4





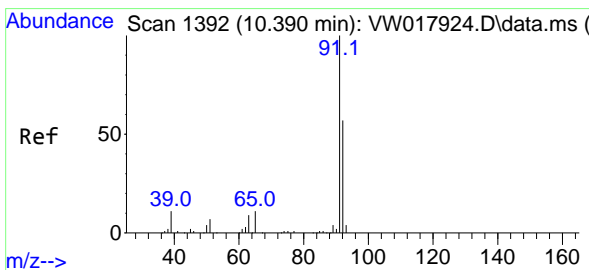
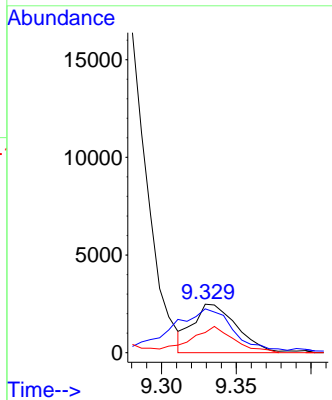
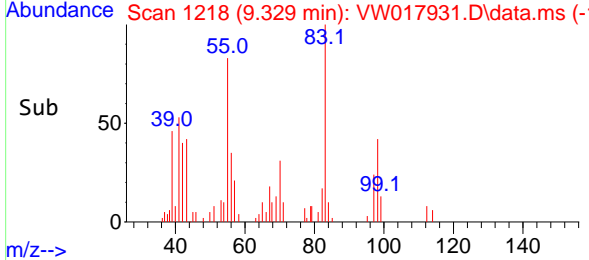
#36  
 Methylcyclohexane  
 Concen: 0.58 ug/L  
 RT: 9.329 min Scan# 1218  
 Delta R.T. -0.006 min  
 Lab File: VW017931.D  
 Acq: 18 Jan 2021 16:19

Instrument :  
 MSVOA\_W  
 ClientSampled :  
 F1C17

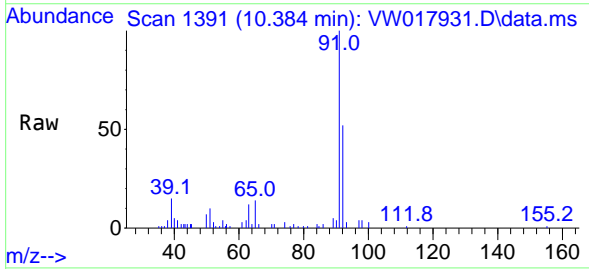


Tgt Ion: 83 Resp: 5041  
 Ion Ratio Lower Upper  
 83 100  
 55 118.8 59.4 89.0#  
 98 52.8 40.7 61.1

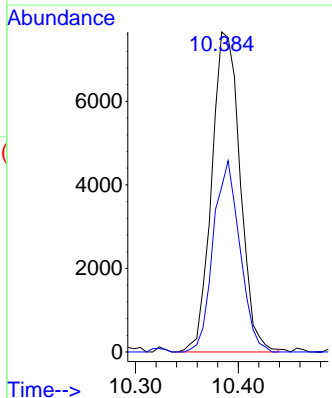
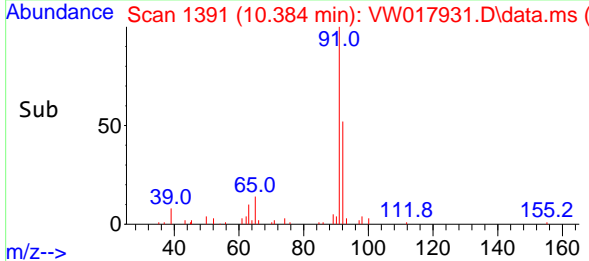
Manual Integrations  
**APPROVED**  
 MMDadoda  
 1/20/2021 4:58:00 PM

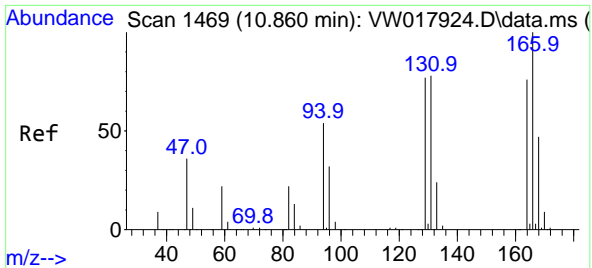


#44  
 Toluene  
 Concen: 0.73 ug/L  
 RT: 10.384 min Scan# 1391  
 Delta R.T. -0.006 min  
 Lab File: VW017931.D  
 Acq: 18 Jan 2021 16:19



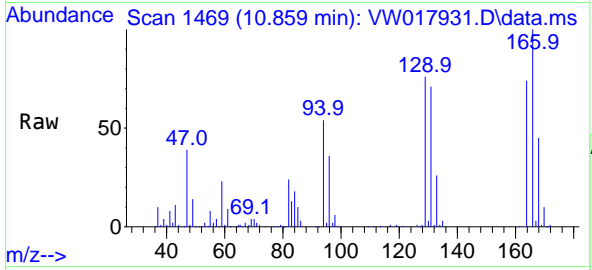
Tgt Ion: 91 Resp: 14703  
 Ion Ratio Lower Upper  
 91 100  
 92 51.6 41.6 77.3





#47  
 Tetrachloroethene  
 Concen: 11.89 ug/L  
 RT: 10.859 min Scan# 1469  
 Delta R.T. -0.000 min  
 Lab File: VW017931.D  
 Acq: 18 Jan 2021 16:19

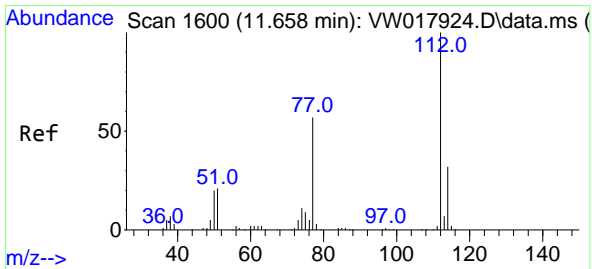
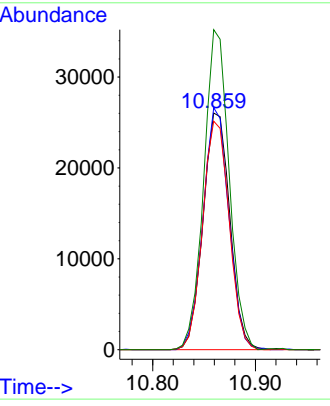
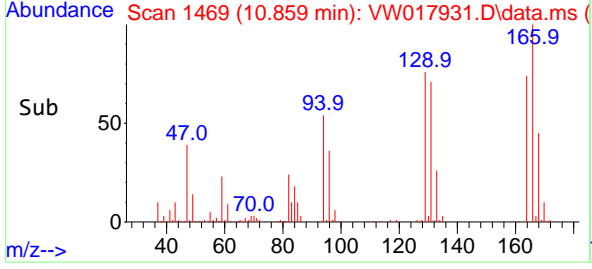
Instrument :  
 MSVOA\_W  
 ClientSampled :  
 F1C17



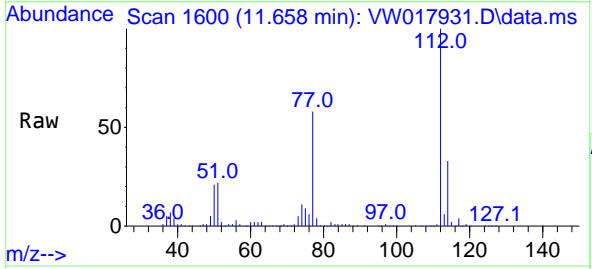
Tgt Ion:164 Resp: 46958

Ion	Ratio	Lower	Upper
164	100		
129	102.2	67.6	125.6
131	96.5	65.2	121.2
166	135.2	93.2	173.2

Manual Integrations  
**APPROVED**  
 MMDadoda  
 1/20/2021 4:58:00 PM

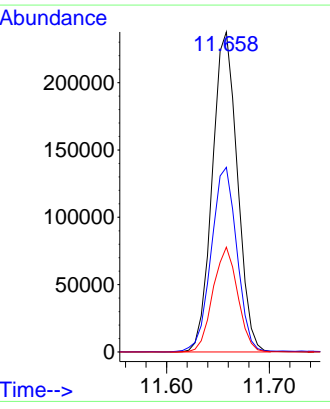
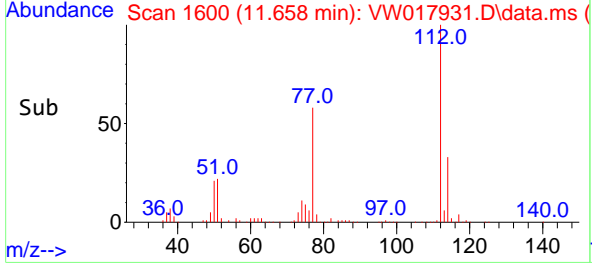


#52  
 Chlorobenzene  
 Concen: 30.91 ug/L  
 RT: 11.658 min Scan# 1600  
 Delta R.T. -0.000 min  
 Lab File: VW017931.D  
 Acq: 18 Jan 2021 16:19

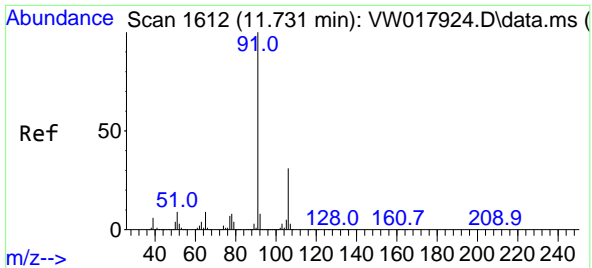


Tgt Ion:112 Resp: 402115

Ion	Ratio	Lower	Upper
112	100		
77	57.7	42.6	64.0
114	32.8	21.6	40.2

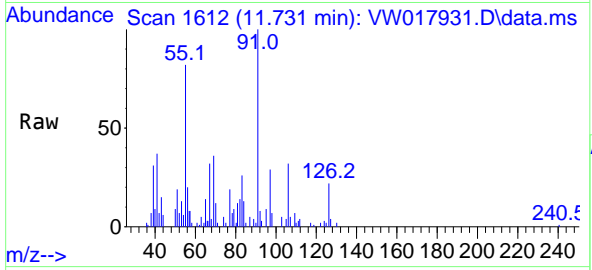






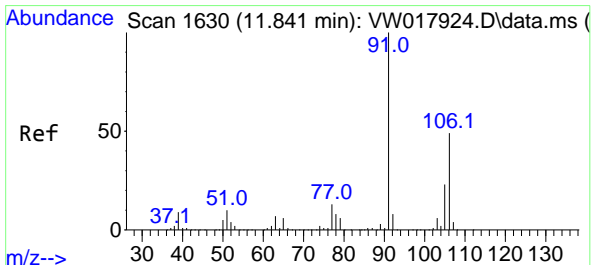
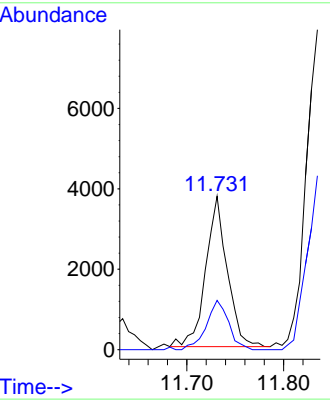
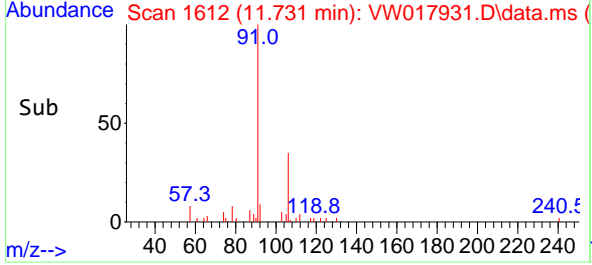
#53  
 Ethylbenzene  
 Concen: 0.25 ug/L  
 RT: 11.731 min Scan# 1612  
 Delta R.T. -0.000 min  
 Lab File: VW017931.D  
 Acq: 18 Jan 2021 16:19

**Instrument :**  
 MSVOA\_W  
**ClientSampled :**  
 F1C17

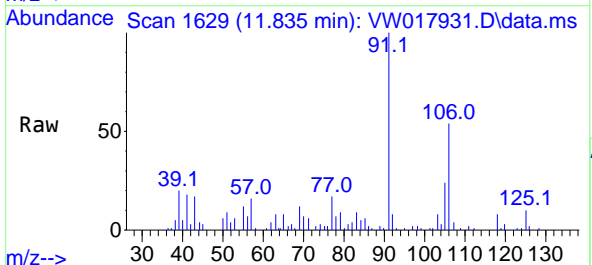


Tgt Ion: 91 Resp: 5802  
 Ion Ratio Lower Upper  
 91 100  
 106 32.1 21.1 39.1

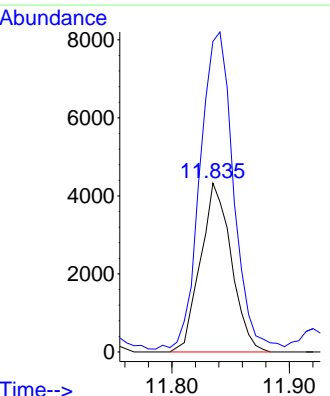
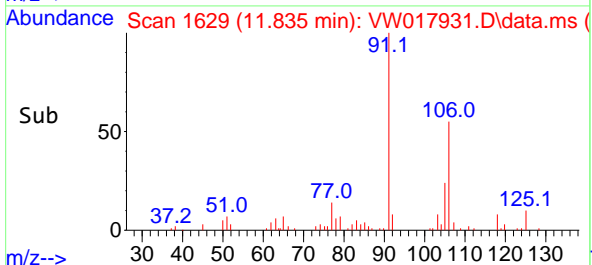
**Manual Integrations**  
**APPROVED**  
 MMDadoda  
 1/20/2021 4:58:00 PM

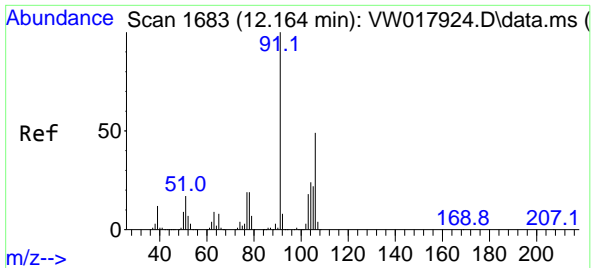


#54  
 m,p-Xylene  
 Concen: 0.90 ug/L  
 RT: 11.835 min Scan# 1629  
 Delta R.T. -0.006 min  
 Lab File: VW017931.D  
 Acq: 18 Jan 2021 16:19



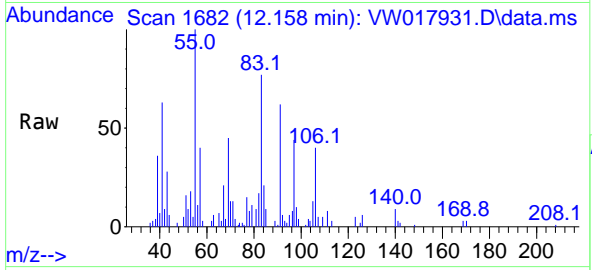
Tgt Ion: 106 Resp: 7895  
 Ion Ratio Lower Upper  
 106 100  
 91 184.0 136.4 253.4





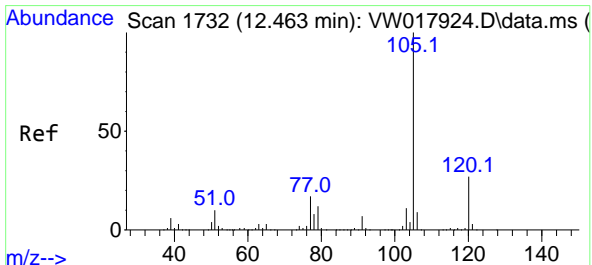
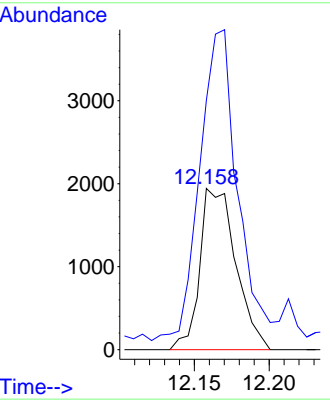
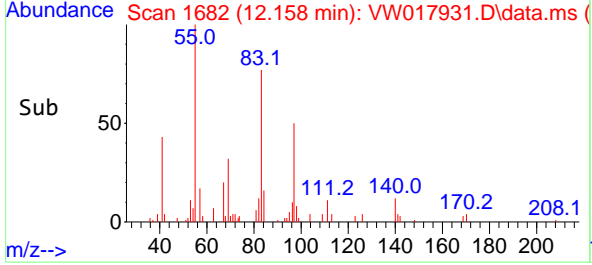
#55  
 o-xylene  
 Concen: 0.40 ug/L  
 RT: 12.158 min Scan# 1682  
 Delta R.T. -0.006 min  
 Lab File: VW017931.D  
 Acq: 18 Jan 2021 16:19

**Instrument :**  
 MSVOA\_W  
**ClientSampled :**  
 F1C17

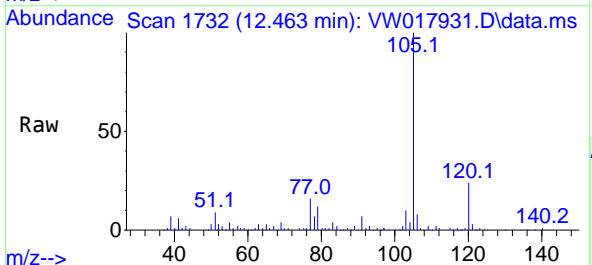


Tgt Ion:106 Resp: 3258  
 Ion Ratio Lower Upper  
 106 100  
 91 154.7 147.6 274.2

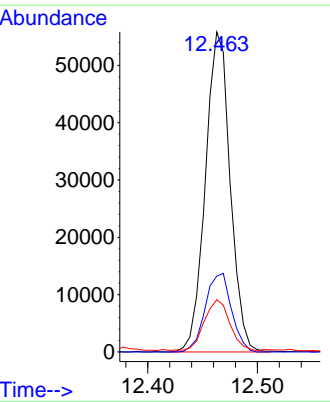
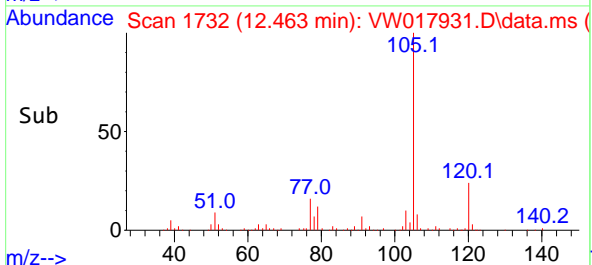
**Manual Integrations**  
**APPROVED**  
 MMDadoda  
 1/20/2021 4:58:00 PM

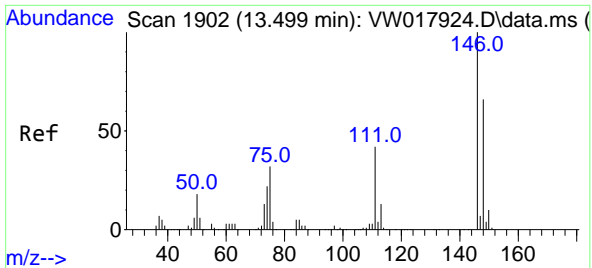


#57  
 Isopropylbenzene  
 Concen: 3.86 ug/L  
 RT: 12.463 min Scan# 1732  
 Delta R.T. -0.000 min  
 Lab File: VW017931.D  
 Acq: 18 Jan 2021 16:19



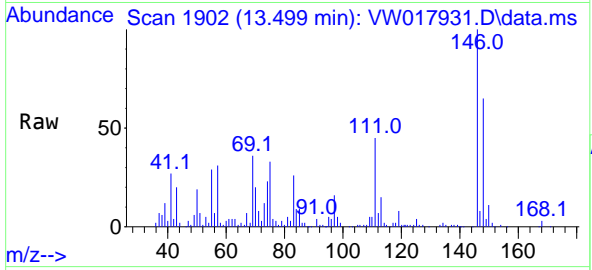
Tgt Ion:105 Resp: 87768  
 Ion Ratio Lower Upper  
 105 100  
 120 25.9 21.4 32.2  
 77 16.5 12.1 18.1





#63  
 1,3-Dichlorobenzene  
 Concen: 6.75 ug/L  
 RT: 13.499 min Scan# 1902  
 Delta R.T. -0.000 min  
 Lab File: VW017931.D  
 Acq: 18 Jan 2021 16:19

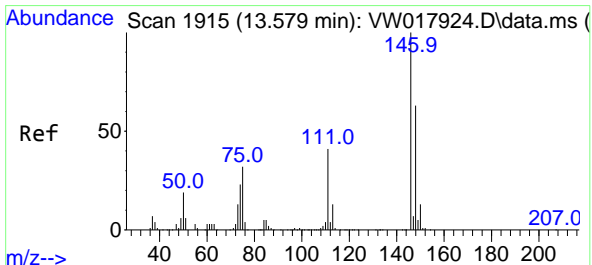
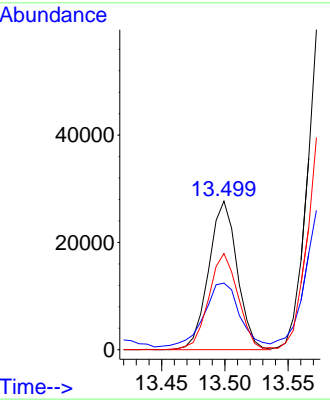
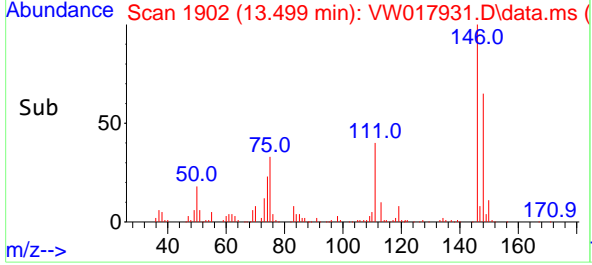
Instrument : MSVOA\_W  
 ClientSampled : F1C17



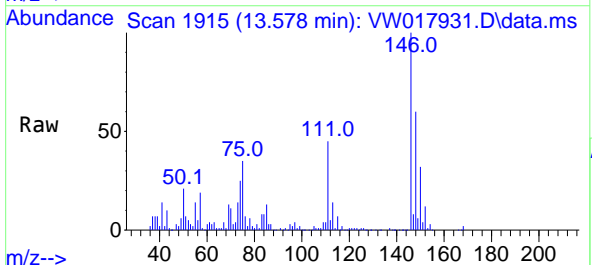
Tgt Ion:146 Resp: 43322

Ion	Ratio	Lower	Upper
146	100		
111	44.8	28.5	52.9
148	64.8	47.8	88.8

Manual Integrations  
**APPROVED**  
 MMDadoda  
 1/20/2021 4:58:00 PM



#64  
 1,4-Dichlorobenzene  
 Concen: 16.38 ug/L  
 RT: 13.578 min Scan# 1915  
 Delta R.T. -0.000 min  
 Lab File: VW017931.D  
 Acq: 18 Jan 2021 16:19



Tgt Ion:146 Resp: 105614

Ion	Ratio	Lower	Upper
146	100		
111	44.6	27.7	51.5
148	60.4	47.0	87.2

