

Data Path : Z:\VOASRV\HPCHEM1\MSVOA W\DATA\VW022819\
 Data File : VW008908.D
 Acq On : 01 Mar 2019 02:16
 Operator : SY/VA
 Sample : K1643-01
 Misc : 5.10G/5ML/MSVOA W/SOIL
 ALS Vial : 36 Sample Multiplier: 1

Instrument :
 MSVOA_W
 ClientSampled :
 INTERIOR-WALL

Quant Time: Mar 01 07:07:10 2019
 Quant Method : Z:\VOASRV\HPCHEM1\MSVOA_W\METHOD\82W022119S.M
 Quant Title : SW846 8260
 QLast Update : Fri Feb 22 00:38:32 2019
 Response via : Initial Calibration

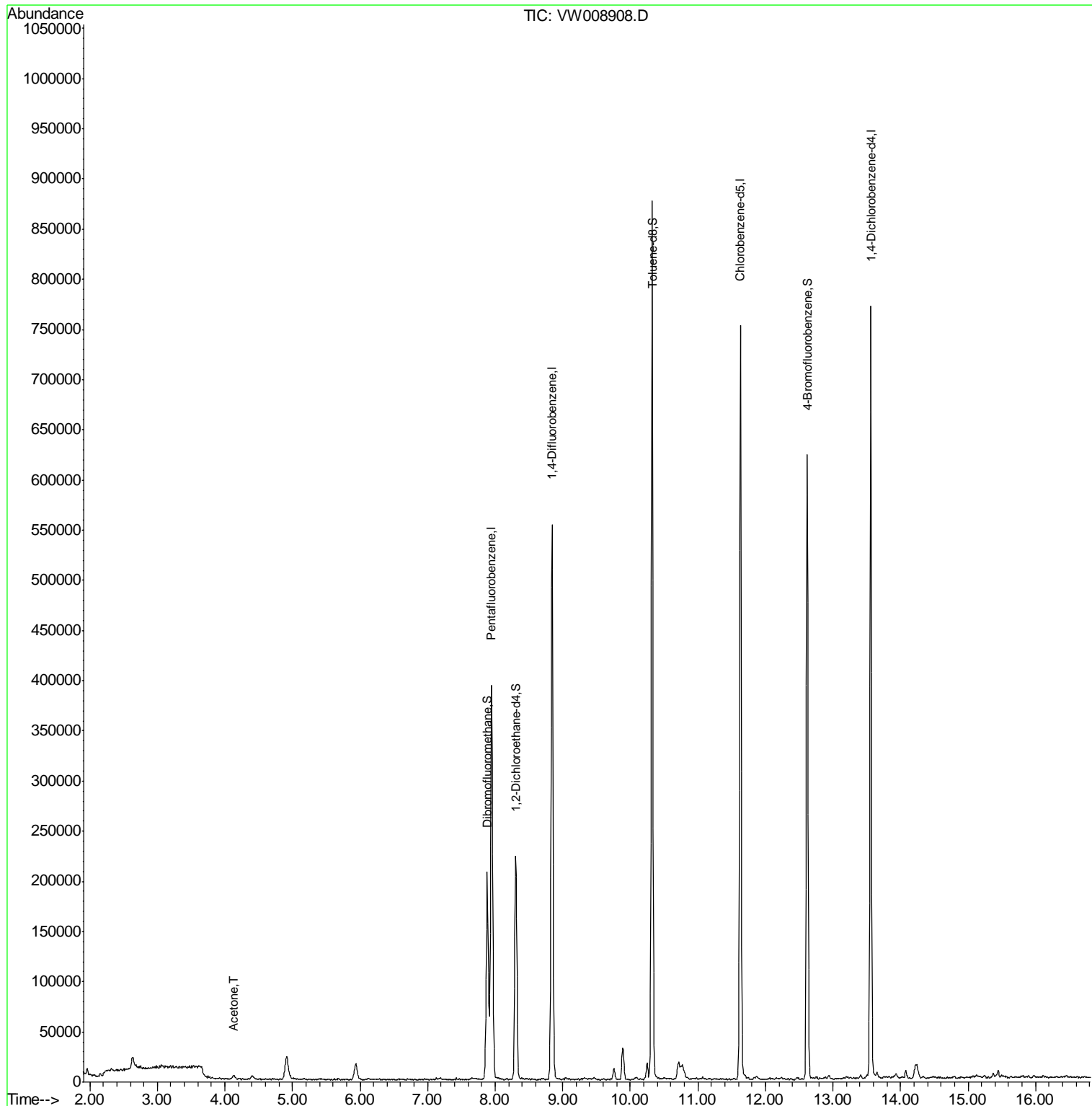
Internal Standards	R.T.	QIon	Response	Conc	Units	Dev(Min)
1) Pentafluorobenzene	7.95	168	295970	50.00	ug/l	0.00
34) 1,4-Difluorobenzene	8.84	114	460504	50.00	ug/l	0.00
63) Chlorobenzene-d5	11.63	117	407302	50.00	ug/l	0.00
72) 1,4-Dichlorobenzene-d4	13.56	152	193263	50.00	ug/l	0.00
System Monitoring Compounds						
33) 1,2-Dichloroethane-d4	8.31	65	164793	59.36	ug/l	0.00
Spiked Amount	50.000		Recovery	=	118.72%	
35) Dibromofluoromethane	7.88	113	139609	50.49	ug/l	0.00
Spiked Amount	50.000		Recovery	=	100.98%	
50) Toluene-d8	10.32	98	548830	51.42	ug/l	0.00
Spiked Amount	50.000		Recovery	=	102.84%	
62) 4-Bromofluorobenzene	12.62	95	187734	44.92	ug/l	0.00
Spiked Amount	50.000		Recovery	=	89.84%	
Target Compounds						
16) Acetone	4.14	43	5966	9.272	ug/l #	84

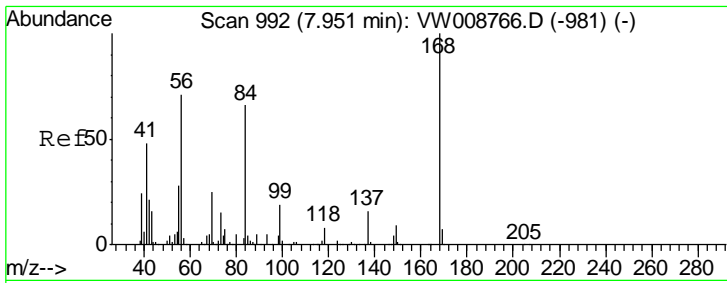
(#) = qualifier out of range (m) = manual integration (+) = signals summed

Data Path : Z:\VOASRV\HPCHEM1\MSVOA W\DATA\VW022819\
 Data File : VW008908.D
 Acq On : 01 Mar 2019 02:16
 Operator : SY/VA
 Sample : K1643-01
 Misc : 5.10G/5ML/MSVOA W/SOIL
 ALS Vial : 36 Sample Multiplier: 1

Instrument :
 MSVOA_W
 ClientSampled :
 INTERIOR-WALL

Quant Time: Mar 01 07:07:10 2019
 Quant Method : Z:\VOASRV\HPCHEM1\MSVOA_W\METHOD\82W022119S.M
 Quant Title : SW846 8260
 QLast Update : Fri Feb 22 00:38:32 2019
 Response via : Initial Calibration

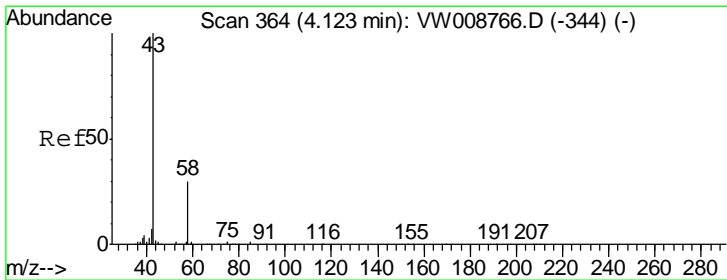
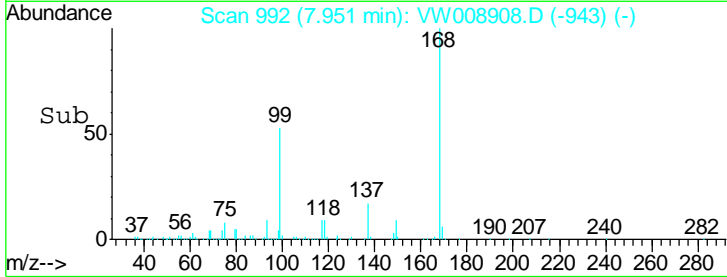
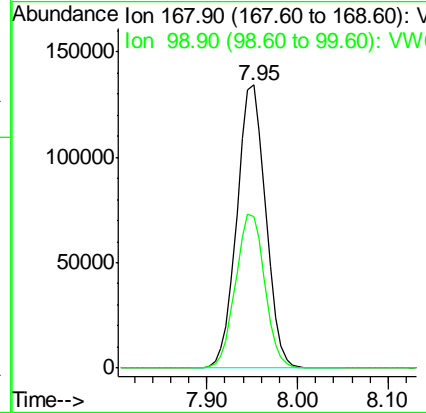
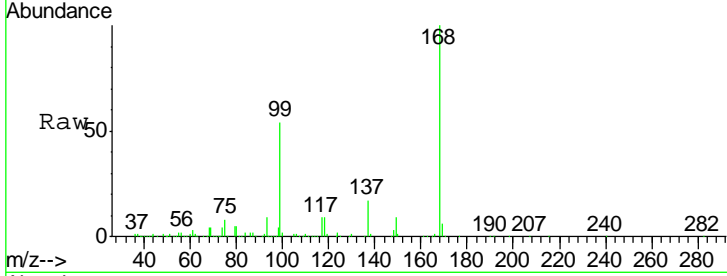




#1
 Pentafluorobenzene
 Concen: 50.000 ug/l
 RT: 7.95 min Scan# 992
 Delta R.T. 0.00 min
 Lab File: VW008908.D
 Acq: 01 Mar 2019 02:16

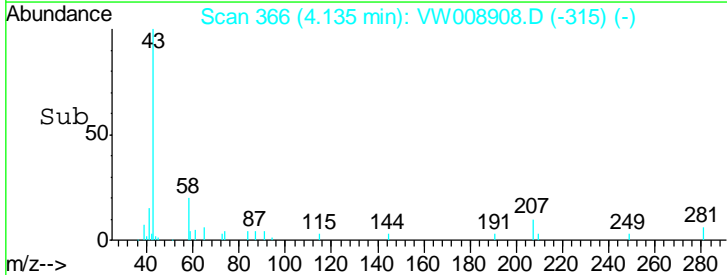
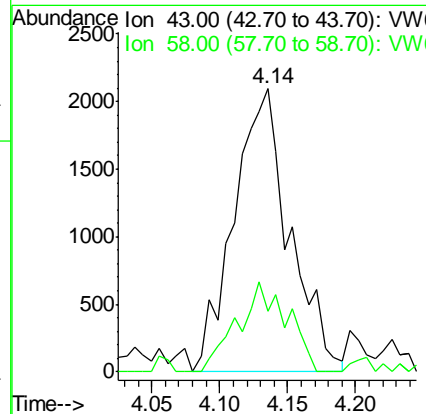
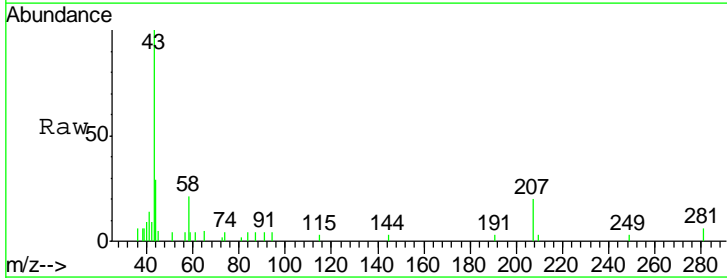
Instrument :
 MSVOA_W
ClientSampled :
 INTERIOR-WALL

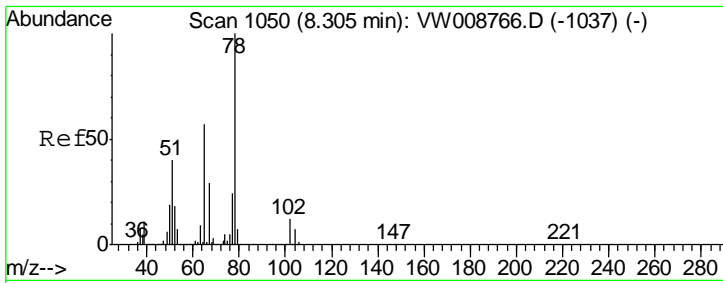
Tgt Ion	Resp	Lower	Upper
168	100		
99	53.5	42.2	63.2



#16
 Acetone
 Concen: 9.272 ug/l
 RT: 4.14 min Scan# 366
 Delta R.T. 0.01 min
 Lab File: VW008908.D
 Acq: 01 Mar 2019 02:16

Tgt Ion	Resp	Lower	Upper
43	100		
58	21.2	23.8	35.6#

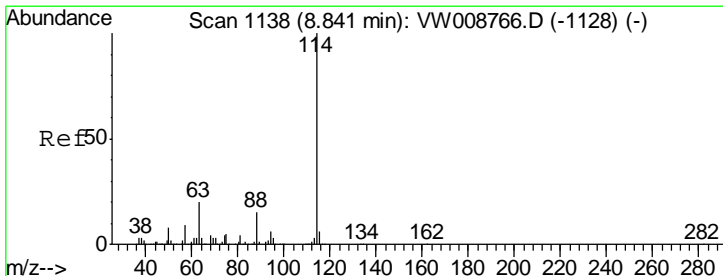
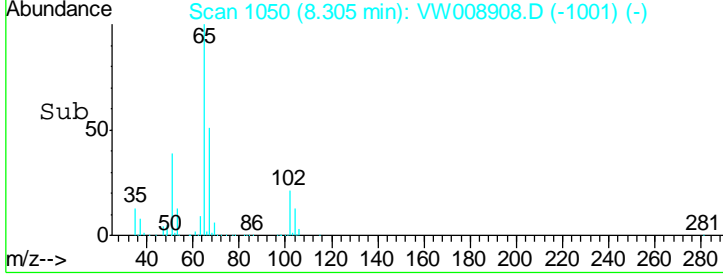
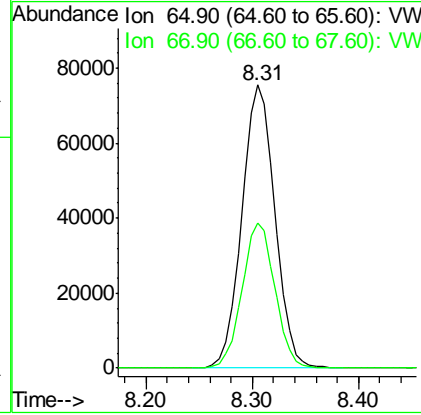
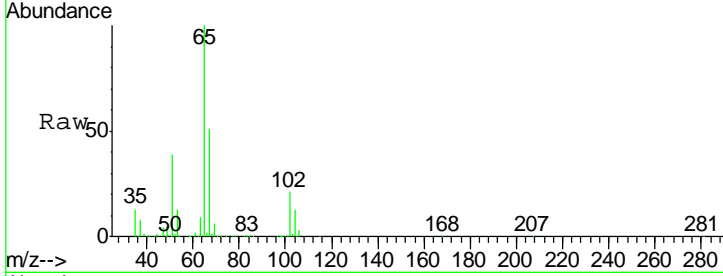




#33
 1,2-Dichloroethane-d4
 Concen: 59.365 ug/l
 RT: 8.31 min Scan# 1050
 Delta R.T. 0.00 min
 Lab File: VW008908.D
 Acq: 01 Mar 2019 02:16

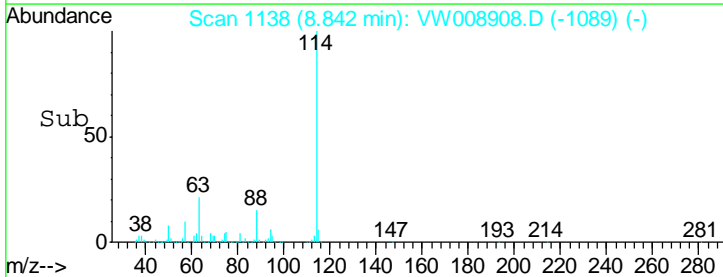
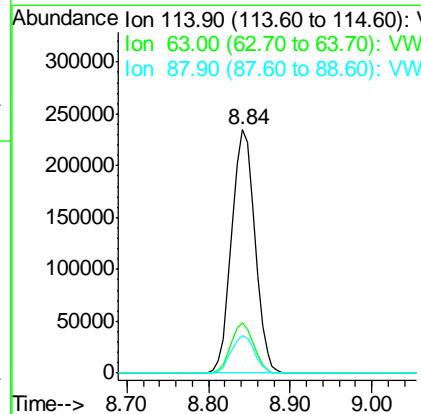
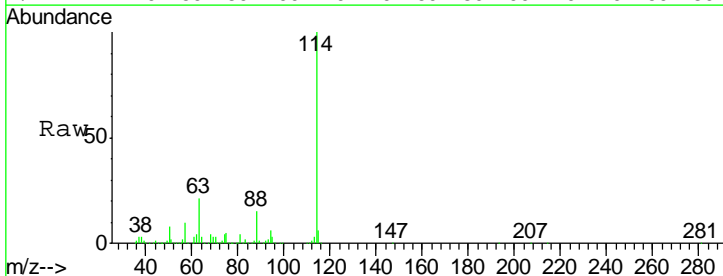
Instrument :
 MSVOA_W
ClientSampled :
 INTERIOR-WALL

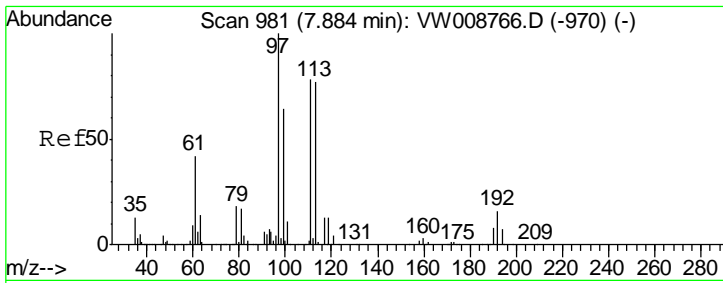
Tgt Ion	Resp	Lower	Upper
65	100		
67	51.1	0.0	101.4



#34
 1,4-Difluorobenzene
 Concen: 50.000 ug/l
 RT: 8.84 min Scan# 1138
 Delta R.T. 0.00 min
 Lab File: VW008908.D
 Acq: 01 Mar 2019 02:16

Tgt Ion	Resp	Lower	Upper
114	100		
63	20.8	0.0	40.8
88	15.3	0.0	30.4

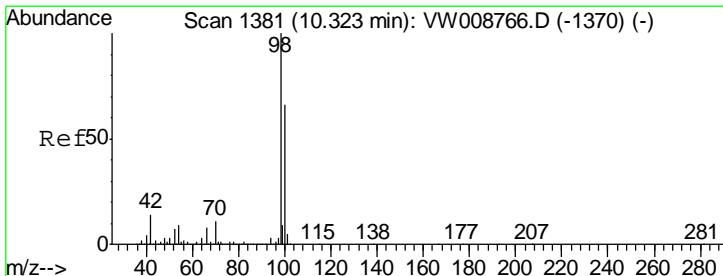
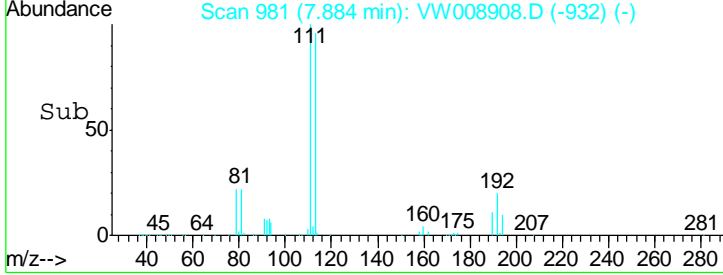
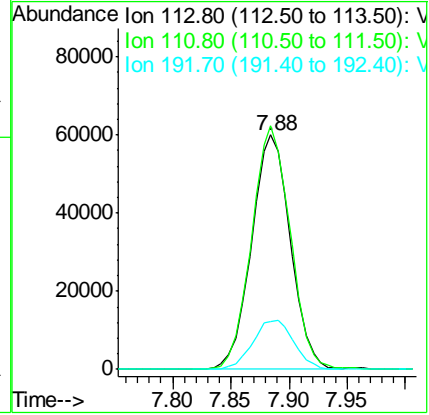
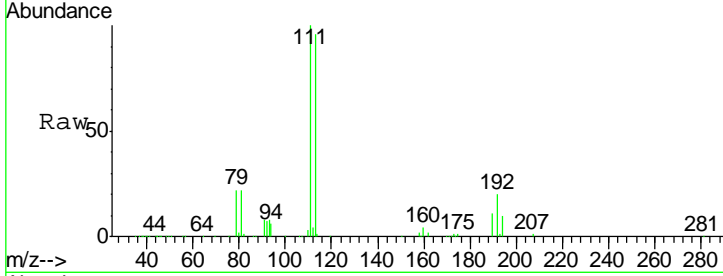




#35
 Dibromofluoromethane
 Concen: 50.493 ug/l
 RT: 7.88 min Scan# 981
 Delta R.T. 0.00 min
 Lab File: VW008908.D
 Acq: 01 Mar 2019 02:16

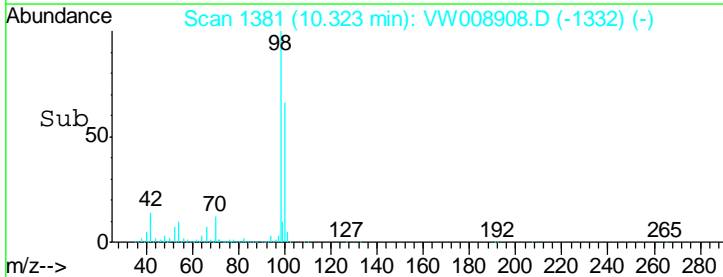
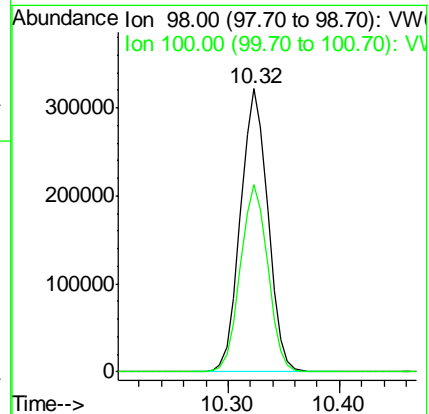
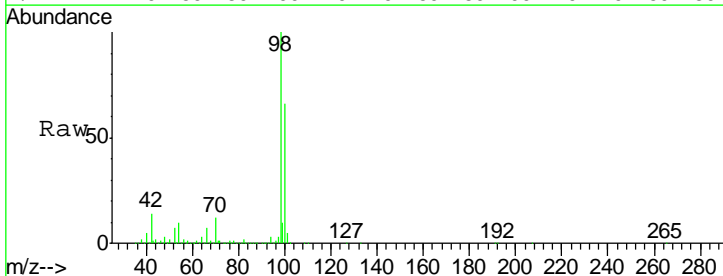
Instrument :
 MSVOA_W
ClientSampled :
 INTERIOR-WALL

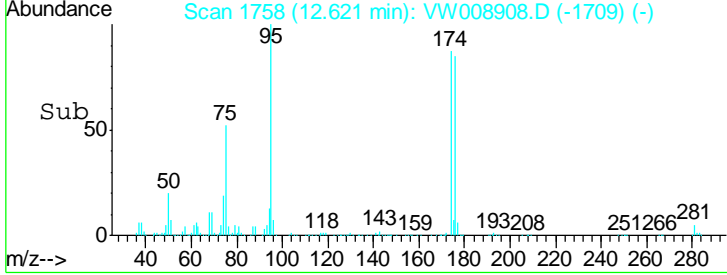
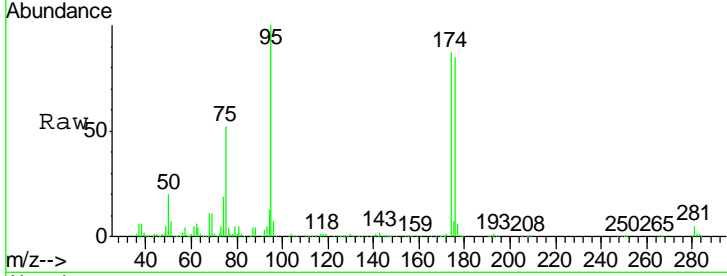
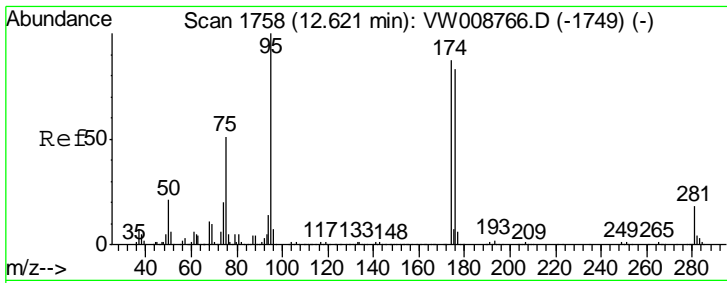
Tgt Ion	Resp	Lower	Upper
113	139609		
111	103.2	81.9	122.9
192	22.2	17.1	25.7



#50
 Toluene-d8
 Concen: 51.420 ug/l
 RT: 10.32 min Scan# 1381
 Delta R.T. 0.00 min
 Lab File: VW008908.D
 Acq: 01 Mar 2019 02:16

Tgt Ion	Resp	Lower	Upper
98	548830		
100	66.2	52.4	78.6

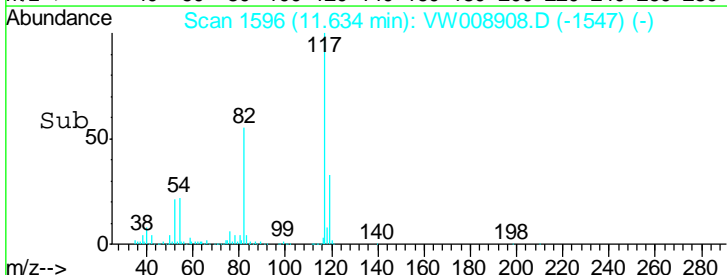
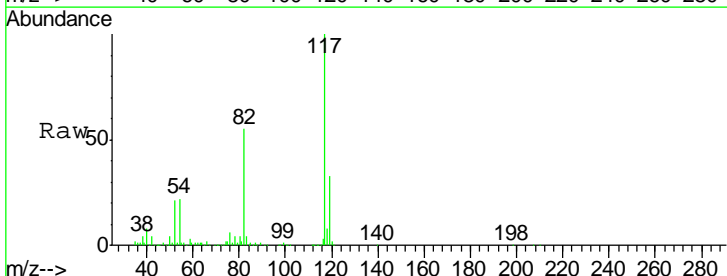
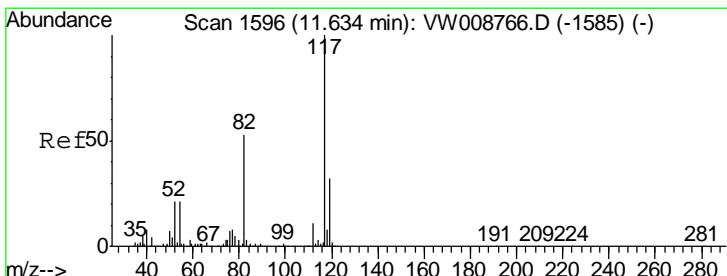
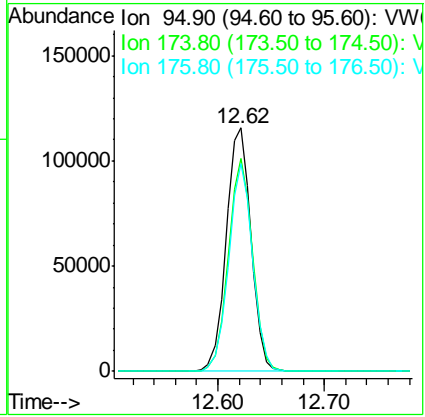




#62
 4-Bromofluorobenzene
 Concen: 44.922 ug/l
 RT: 12.62 min Scan# 1758
 Delta R.T. 0.00 min
 Lab File: VW008908.D
 Acq: 01 Mar 2019 02:16

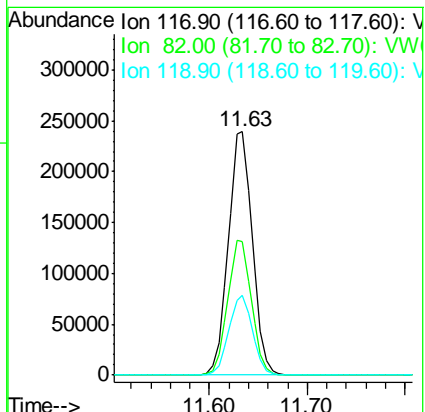
Instrument : MSVOA_W
 ClientSampled : INTERIOR-WALL

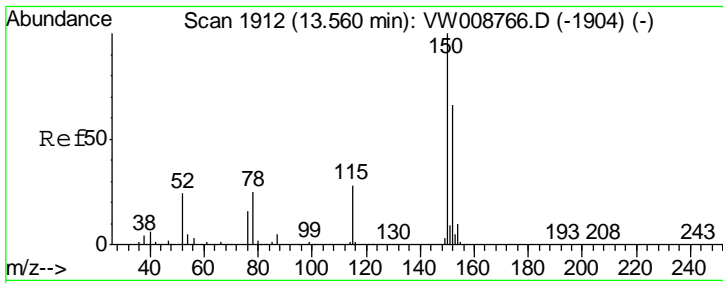
Tgt Ion	Resp	Lower	Upper
95	187734		
174	85.9	0.0	169.2
176	83.0	0.0	163.6



#63
 Chlorobenzene-d5
 Concen: 50.000 ug/l
 RT: 11.63 min Scan# 1596
 Delta R.T. 0.00 min
 Lab File: VW008908.D
 Acq: 01 Mar 2019 02:16

Tgt Ion	Resp	Lower	Upper
117	407302		
82	54.8	42.2	63.4
119	32.8	25.9	38.9





#72
 1,4-Dichlorobenzene-d4
 Concen: 50.000 ug/l
 RT: 13.56 min Scan# 1912
 Delta R.T. 0.00 min
 Lab File: VW008908.D
 Acq: 01 Mar 2019 02:16

Instrument : MSVOA_W
 ClientSampled : INTERIOR-WALL

Tot Ion:152 Resp: 193263

Ion	Ratio	Lower	Upper
152	100		
115	57.3	28.6	85.8
150	158.2	0.0	348.0

