

Data Path : Z:\voasrv\HPCHEM1\MSVOA_W\Data\VW032621\
 Data File : VW018464.D
 Acq On : 26 Mar 2021 12:05
 Operator : SY/VA
 Sample : M1784-17
 Misc : 5.81G/10ML/MSVOA_W/SOIL
 ALS Vial : 6 Sample Multiplier: 1

Instrument :
 MSVOA_W
 ClientSampleId :
 BG4X8

Integration Parameters: LSCINT.P

Integrator: RTE
 Smoothing : OFF Filtering: 5
 Sampling : 1 Min Area: 0 % of largest Peak
 Start Thrs: 0.2 Max Peaks: 100
 Stop Thrs : 0 Peak Location: TOP

If leading or trailing edge < 100 prefer < Baseline drop else tangent >
 Peak separation: 5

Method : Z:\voasrv\HPCHEM1\MSVOA_W\Method\SOM2WLM031921S.M
 Title : VOC Analysis

Signal : TIC: VW018464.D\data.ms

peak #	R.T. min	first scan	max scan	last scan	PK TY	peak height	corr. area	corr. % max.	% of total
1	2.361	70	75	86	rVB	103039	206053	15.45%	1.988%
2	2.898	157	163	175	rVB	84675	207283	15.54%	2.000%
3	3.501	260	262	268	rVB3	867	1039	0.08%	0.010%
4	3.556	268	271	272	rBV	599	709	0.05%	0.007%
5	3.611	276	280	285	rBV5	833	1941	0.15%	0.019%
6	3.782	306	308	309	rVB	523	318	0.02%	0.003%
7	3.800	309	311	312	rBV2	493	453	0.03%	0.004%
8	3.836	316	317	320	rVV2	780	576	0.04%	0.006%
9	4.025	337	348	365	rBV2	144206	466001	34.95%	4.496%
10	4.336	396	399	403	rVB2	628	827	0.06%	0.008%
11	4.367	403	404	407	rBV2	549	650	0.05%	0.006%
12	4.403	408	410	412	rBV3	446	380	0.03%	0.004%
13	4.623	442	446	447	rBV	296	331	0.02%	0.003%
14	4.653	447	451	452	rBV2	463	619	0.05%	0.006%
15	4.690	452	457	458	rBV3	541	703	0.05%	0.007%
16	4.922	487	495	509	rVV5	9706	35528	2.66%	0.343%
17	5.031	511	513	516	rVB2	506	346	0.03%	0.003%
18	5.129	526	529	530	rBV2	770	661	0.05%	0.006%
19	5.275	551	553	555	rBV3	411	420	0.03%	0.004%
20	5.354	564	566	567	rBV	580	545	0.04%	0.005%
21	5.543	595	597	600	rBV	497	480	0.04%	0.005%
22	5.647	611	614	616	rBV3	434	614	0.05%	0.006%
23	5.952	653	664	675	rVB4	6543	21733	1.63%	0.210%
24	6.037	675	678	679	rBV3	451	532	0.04%	0.005%
25	6.184	700	702	705	rBV3	580	606	0.05%	0.006%
26	6.476	747	750	751	rBV2	460	448	0.03%	0.004%
27	6.665	778	781	782	rBV	511	567	0.04%	0.005%
28	6.738	791	793	795	rBV	560	459	0.03%	0.004%
29	6.799	802	803	807	rVB2	736	493	0.04%	0.005%
30	6.848	807	811	812	rBV2	513	537	0.04%	0.005%
31	7.086	841	850	868	rBV2	39218	128481	9.63%	1.240%
32	7.275	879	881	884	rBV3	840	907	0.07%	0.009%
33	7.385	897	899	901	rVV2	563	492	0.04%	0.005%
34	7.427	905	906	910	rVB2	466	480	0.04%	0.005%
35	7.531	920	923	924	rBV	556	624	0.05%	0.006%
36	7.653	931	943	956	rBV	232543	571046	42.82%	5.510%

Data Path : Z:\voasrv\HPCHEM1\MSVOA_W\Data\VW032621\
 Data File : VW018464.D
 Acq On : 26 Mar 2021 12:05
 Operator : SY/VA
 Sample : M1784-17
 Misc : 5.81G/10ML/MSVOA_W/SOIL
 ALS Vial : 6 Sample Multiplier: 1

Instrument :
 MSVOA_W
 ClientSampleId :
 BG4X8

Integration Parameters: LSCINT.P

Integrator: RTE
 Smoothing : OFF Filtering: 5
 Sampling : 1 Min Area: 0 % of largest Peak
 Start Thrs: 0.2 Max Peaks: 100
 Stop Thrs : 0 Peak Location: TOP

If leading or trailing edge < 100 prefer < Baseline drop else tangent >
 Peak separation: 5

Method : Z:\voasrv\HPCHEM1\MSVOA_W\Method\SOM2WLM031921S.M
 Title : VOC Analysis

37	7.878	976	980	981	rBV2	1004	1214	0.09%	0.012%
38	7.921	985	987	988	rBV	717	599	0.04%	0.006%
39	7.952	988	992	999	rVB5	3173	7290	0.55%	0.070%
40	8.043	1005	1007	1008	rBV	555	393	0.03%	0.004%
41	8.067	1009	1011	1012	rVV	697	373	0.03%	0.004%
42	8.141	1021	1023	1027	rBV2	417	390	0.03%	0.004%
43	8.281	1035	1046	1063	rBV2	435370	1333518	100.00%	12.867%
44	8.506	1080	1083	1085	rBV	418	421	0.03%	0.004%
45	8.567	1089	1093	1094	rVB2	750	479	0.04%	0.005%
46	8.604	1096	1099	1101	rBV	726	639	0.05%	0.006%
47	8.622	1101	1102	1105	rBV2	432	367	0.03%	0.004%
48	8.683	1108	1112	1116	rBV3	552	616	0.05%	0.006%
49	8.842	1129	1138	1149	rBV	456397	924603	69.34%	8.921%
50	9.079	1171	1177	1183	rVB7	2664	6062	0.45%	0.058%
51	9.153	1187	1189	1190	rBV	770	400	0.03%	0.004%
52	9.207	1193	1198	1199	rBV3	279	491	0.04%	0.005%
53	9.275	1199	1209	1218	rBV	299053	602114	45.15%	5.810%
54	9.439	1233	1236	1238	rBV3	492	643	0.05%	0.006%
55	9.555	1253	1255	1258	rVB2	753	727	0.05%	0.007%
56	9.592	1258	1261	1263	rVB2	479	383	0.03%	0.004%
57	9.659	1263	1272	1282	rBV8	2194	6026	0.45%	0.058%
58	9.787	1291	1293	1294	rBV2	657	455	0.03%	0.004%
59	9.927	1311	1316	1323	rVB	20308	33938	2.54%	0.327%
60	10.037	1326	1334	1346	rVV	168321	303495	22.76%	2.928%
61	10.134	1346	1350	1354	rVB4	1735	2764	0.21%	0.027%
62	10.213	1359	1363	1368	rBV5	1908	3337	0.25%	0.032%
63	10.323	1371	1381	1389	rBV	622261	1103094	82.72%	10.643%
64	10.579	1417	1423	1430	rBV2	108927	186038	13.95%	1.795%
65	10.707	1439	1444	1449	rVB3	6171	10961	0.82%	0.106%
66	10.793	1450	1458	1460	rBV7	5038	10810	0.81%	0.104%
67	10.927	1474	1480	1499	rVB	156745	277418	20.80%	2.677%
68	11.634	1588	1596	1607	rBV	655167	1125609	84.41%	10.861%
69	11.731	1607	1612	1618	rVB3	4705	9072	0.68%	0.088%
70	11.780	1618	1620	1623	rVB3	939	908	0.07%	0.009%
71	11.841	1625	1630	1639	rVB4	6159	12956	0.97%	0.125%
72	11.908	1639	1641	1644	rBV2	685	707	0.05%	0.007%
73	12.170	1680	1684	1693	rVB5	5587	11377	0.85%	0.110%
74	12.463	1727	1732	1739	rVB2	6757	11594	0.87%	0.112%
75	12.536	1742	1744	1745	rBV2	439	317	0.02%	0.003%
76	12.609	1750	1756	1762	rVB2	23753	38760	2.91%	0.374%

Data Path : Z:\voasrv\HPCHEM1\MSVOA_W\Data\VW032621\
 Data File : VW018464.D
 Acq On : 26 Mar 2021 12:05
 Operator : SY/VA
 Sample : M1784-17
 Misc : 5.81G/10ML/MSVOA_W/SOIL
 ALS Vial : 6 Sample Multiplier: 1

Instrument :
 MSVOA_W
 ClientSampleId :
 BG4X8

Integration Parameters: LSCINT.P

Integrator: RTE
 Smoothing : OFF Filtering: 5
 Sampling : 1 Min Area: 0 % of largest Peak
 Start Thrs: 0.2 Max Peaks: 100
 Stop Thrs : 0 Peak Location: TOP

If leading or trailing edge < 100 prefer < Baseline drop else tangent >
 Peak separation: 5

Method : Z:\voasrv\HPCHEM1\MSVOA_W\Method\SOM2WLM031921S.M
 Title : VOC Analysis

77	12.695	1762	1770	1777	rBV	254959	426766	32.00%	4.118%
78	12.804	1784	1788	1796	rVB	5828	9710	0.73%	0.094%
79	12.890	1796	1802	1806	rBV3	4288	7423	0.56%	0.072%
80	12.945	1806	1811	1815	rVV	8268	12891	0.97%	0.124%
81	12.987	1815	1818	1823	rVB	2996	4153	0.31%	0.040%
82	13.079	1830	1833	1836	rBV4	1063	1350	0.10%	0.013%
83	13.201	1849	1853	1857	rBV3	8419	13067	0.98%	0.126%
84	13.249	1857	1861	1866	rVB2	8321	13311	1.00%	0.128%
85	13.384	1877	1883	1892	rVB5	6968	15227	1.14%	0.147%
86	13.493	1894	1901	1905	rBV3	12122	21699	1.63%	0.209%
87	13.554	1905	1911	1924	rVB	671747	1105420	82.90%	10.666%
88	13.762	1939	1945	1948	rBV5	1683	3408	0.26%	0.033%
89	13.853	1951	1960	1972	rVB	567270	937821	70.33%	9.049%
90	14.066	1990	1995	2006	rVB2	18178	37876	2.84%	0.365%
91	14.146	2006	2008	2011	rVB3	1027	666	0.05%	0.006%
92	14.329	2030	2038	2044	rBV8	4050	9301	0.70%	0.090%
93	14.627	2084	2087	2091	rBV5	2353	3009	0.23%	0.029%
94	14.792	2109	2114	2119	rVB2	7143	10479	0.79%	0.101%
95	15.127	2163	2169	2174	rBV6	6528	13120	0.98%	0.127%
96	15.365	2204	2208	2213	rBV3	3731	6490	0.49%	0.063%
97	15.493	2223	2229	2233	rBV	5649	11137	0.84%	0.107%
98	15.548	2234	2238	2244	rVB3	7531	12929	0.97%	0.125%
99	15.914	2296	2298	2300	rBV3	1300	1077	0.08%	0.010%
100	16.005	2311	2313	2314	rBV	992	558	0.04%	0.005%

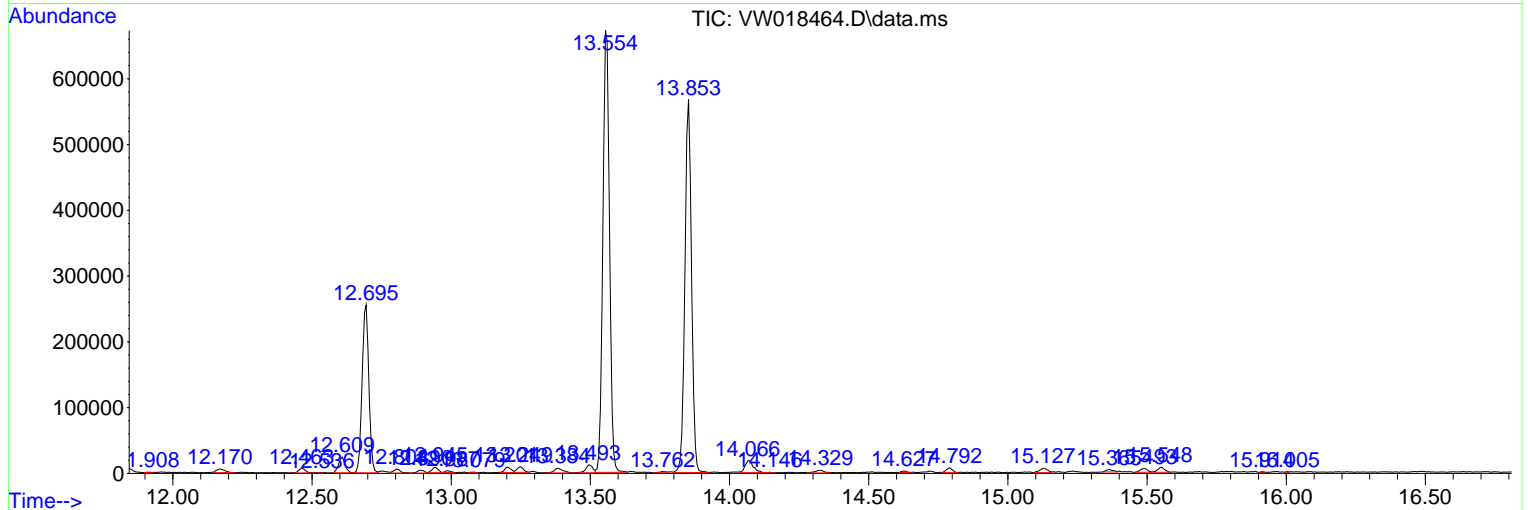
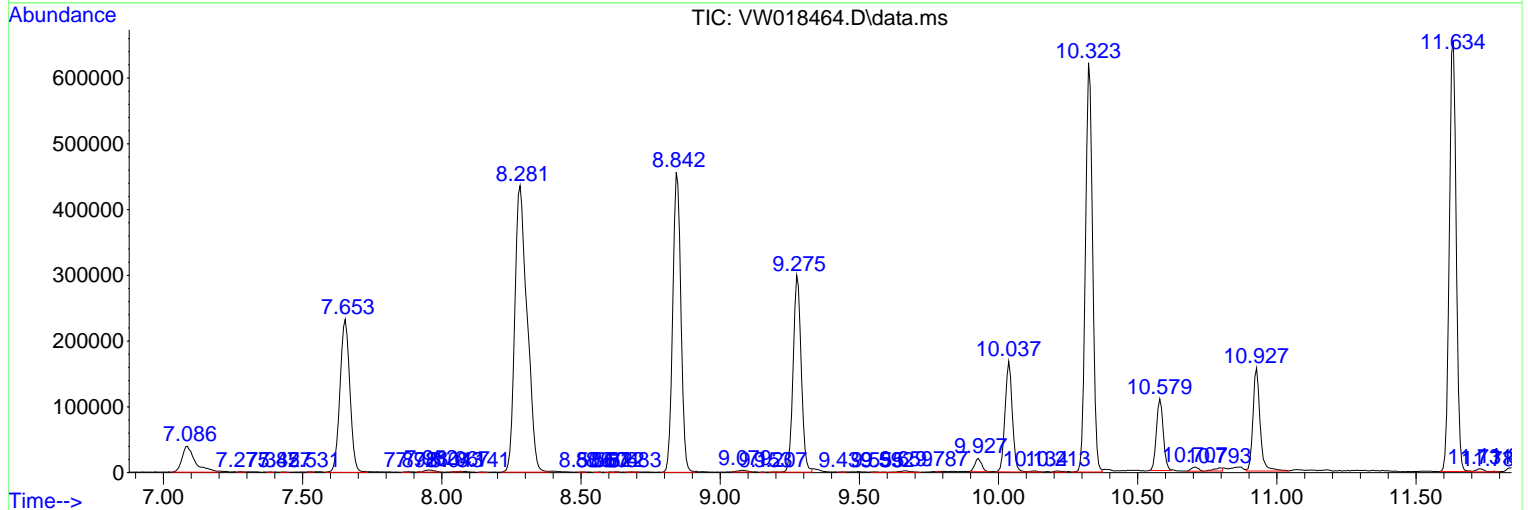
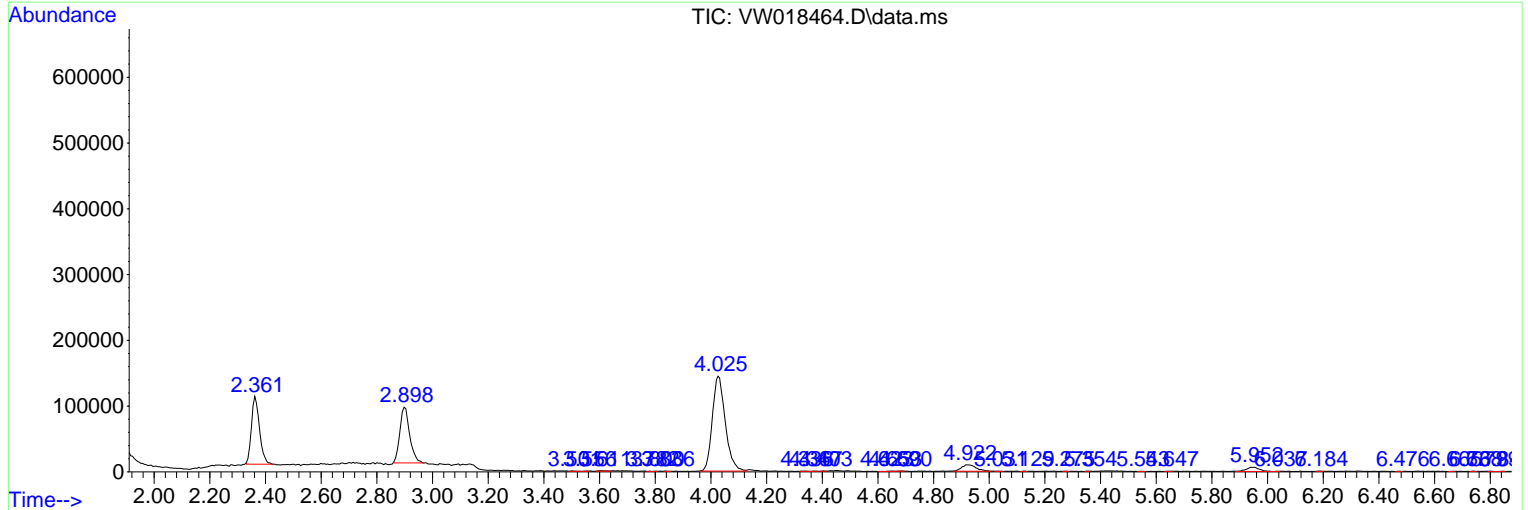
Sum of corrected areas: 10364128

Data Path : Z:\voasrv\HPCHEM1\MSVOA_W\Data\VW032621\
 Data File : VW018464.D
 Acq On : 26 Mar 2021 12:05
 Operator : SY/VA
 Sample : M1784-17
 Misc : 5.81G/10ML/MSVOA_W/SOIL
 ALS Vial : 6 Sample Multiplier: 1

Instrument :
 MSVOA_W
 ClientSampleId :
 BG4X8

Quant Method : Z:\voasrv\HPCHEM1\MSVOA_W\Method\SOM2WLM031921S.M
 Quant Title : VOC Analysis

TIC Library : C:\DATABASE\NIST11.L
 TIC Integration Parameters: LSCINT.P



Data Path : Z:\voasrv\HPCHEM1\MSVOA_W\Data\VW032621\
Data File : VW018464.D
Acq On : 26 Mar 2021 12:05
Operator : SY/VA
Sample : M1784-17
Misc : 5.81G/10ML/MSVOA_W/SOIL
ALS Vial : 6 Sample Multiplier: 1

Instrument :
MSVOA_W
ClientSampleId :
BG4X8

Quant Method : Z:\voasrv\HPCHEM1\MSVOA_W\Method\SOM2WLM031921S.M
Quant Title : VOC Analysis

TIC Library : C:\DATABASE\NIST11.L
TIC Integration Parameters: LSCINT.P

No Library Search Compounds Detected

Data Path : Z:\voasrv\HPCHEM1\MSVOA_W\Data\VW032621\
Data File : VW018464.D
Acq On : 26 Mar 2021 12:05
Operator : SY/VA
Sample : M1784-17
Misc : 5.81G/10ML/MSVOA_W/SOIL
ALS Vial : 6 Sample Multiplier: 1

Instrument :
MSVOA_W
ClientSampleId :
BG4X8

Quant Method : Z:\voasrv\HPCHEM1\MSVOA_W\Method\SOM2WLM031921S.M
Quant Title : VOC Analysis

TIC Library : C:\DATABASE\NIST11.L
TIC Integration Parameters: LSCINT.P

TIC Top Hit name	RT	EstConc	Units	Response	#	RT	Resp	Conc
------------------	----	---------	-------	----------	---	----	------	------

|--Internal Standard--|