

Data Path : Z:\voasrv\HPCHEM1\MSVOA_W\Data\VW062521\
 Data File : VW019326.D
 Acq On : 25 Jun 2021 14:11
 Operator : SY/VA
 Sample : M2808-18
 Misc : 4.19G/10ML/MSVOA_W/SOIL
 ALS Vial : 9 Sample Multiplier: 1

Instrument :
 MSVOA_W
 ClientSampleId :
 BGD7

Integration Parameters: LSCINT.P

Integrator: RTE
 Smoothing : OFF Filtering: 5
 Sampling : 1 Min Area: 0 % of largest Peak
 Start Thrs: 0.2 Max Peaks: 100
 Stop Thrs : 0 Peak Location: TOP

If leading or trailing edge < 100 prefer < Baseline drop else tangent >
 Peak separation: 5

Method : Z:\voasrv\HPCHEM1\MSVOA_W\Method\SFAMWLM060221SMA.M
 Title : SFAM01.0

Signal : TIC: VW019326.D\data.ms

peak #	R.T. min	first scan	max scan	last scan	PK TY	peak height	corr. area	corr. % max.	% of total
1	2.355	65	74	88	rBV	94954	206724	15.17%	2.235%
2	2.898	156	163	175	rVB	71394	174425	12.80%	1.886%
3	3.617	278	281	283	rVB2	431	402	0.03%	0.004%
4	3.635	283	284	287	rVB3	305	261	0.02%	0.003%
5	3.696	292	294	296	rBV2	390	353	0.03%	0.004%
6	4.025	336	348	361	rBV	140001	444783	32.63%	4.808%
7	4.391	400	408	416	rBV2	4235	12568	0.92%	0.136%
8	4.525	428	430	431	rBV	455	250	0.02%	0.003%
9	4.653	449	451	452	rVV2	295	204	0.01%	0.002%
10	4.745	463	466	468	rVB2	353	325	0.02%	0.004%
11	4.922	485	495	510	rBV2	12069	43385	3.18%	0.469%
12	5.092	521	523	525	rBV	231	222	0.02%	0.002%
13	5.202	530	541	543	rBV5	1302	3567	0.26%	0.039%
14	5.336	561	563	566	rBV	252	209	0.02%	0.002%
15	5.379	566	570	572	rBV3	313	416	0.03%	0.004%
16	5.422	576	577	579	rBV	310	229	0.02%	0.002%
17	5.525	590	594	597	rBV2	320	364	0.03%	0.004%
18	5.617	608	609	612	rVV	292	223	0.02%	0.002%
19	5.757	628	632	633	rBV2	692	653	0.05%	0.007%
20	5.885	649	653	655	rBV3	267	343	0.03%	0.004%
21	5.940	655	662	671	rBV5	1861	5399	0.40%	0.058%
22	6.056	679	681	683	rBV	277	211	0.02%	0.002%
23	6.171	698	700	703	rVB	348	199	0.01%	0.002%
24	6.257	710	714	716	rBV2	269	379	0.03%	0.004%
25	6.360	729	731	734	rVB2	295	209	0.02%	0.002%
26	6.488	747	752	755	rBV2	257	522	0.04%	0.006%
27	6.562	762	764	767	rVB2	240	242	0.02%	0.003%
28	6.586	767	768	770	rBV	282	265	0.02%	0.003%
29	6.684	782	784	785	rBV	316	305	0.02%	0.003%
30	6.769	797	798	799	rBV	349	227	0.02%	0.002%
31	6.860	810	813	816	rBV2	261	279	0.02%	0.003%
32	7.086	840	850	858	rBV	30715	90660	6.65%	0.980%
33	7.409	901	903	905	rBV	334	236	0.02%	0.003%
34	7.482	913	915	917	rVB2	219	176	0.01%	0.002%
35	7.543	923	925	927	rVV2	417	263	0.02%	0.003%
36	7.653	933	943	959	rVB	250381	602891	44.23%	6.518%

Data Path : Z:\voasrv\HPCHEM1\MSVOA_W\Data\VW062521\
 Data File : VW019326.D
 Acq On : 25 Jun 2021 14:11
 Operator : SY/VA
 Sample : M2808-18
 Misc : 4.19G/10ML/MSVOA_W/SOIL
 ALS Vial : 9 Sample Multiplier: 1

Instrument :
 MSVOA_W
 ClientSampleId :
 BGD7

Integration Parameters: LSCINT.P

Integrator: RTE
 Smoothing : OFF
 Sampling : 1
 Start Thrs : 0.2
 Stop Thrs : 0

Filtering: 5
 Min Area: 0 % of largest Peak
 Max Peaks: 100
 Peak Location: TOP

If leading or trailing edge < 100 prefer < Baseline drop else tangent >
 Peak separation: 5

Method : Z:\voasrv\HPCHEM1\MSVOA_W\Method\SFAMWLM060221SMA.M
 Title : SFAM01.0

37	7.872	977	979	980	rBV	248	220	0.02%	0.002%
38	8.074	1010	1012	1015	rVB2	229	194	0.01%	0.002%
39	8.281	1035	1046	1062	rBV2	461496	1362960	100.00%	14.734%
40	8.519	1081	1085	1086	rBV	214	184	0.01%	0.002%
41	8.573	1087	1094	1100	rVB4	810	2022	0.15%	0.022%
42	8.677	1109	1111	1112	rBV	309	192	0.01%	0.002%
43	8.695	1112	1114	1120	rBV4	699	950	0.07%	0.010%
44	8.848	1130	1139	1150	rBV	497926	998393	73.25%	10.793%
45	9.073	1173	1176	1177	rBV	802	855	0.06%	0.009%
46	9.201	1194	1197	1199	rBV2	189	239	0.02%	0.003%
47	9.275	1201	1209	1219	rBV	314915	643684	47.23%	6.959%
48	9.427	1232	1234	1238	rBV3	289	472	0.03%	0.005%
49	9.476	1241	1242	1245	rVV2	499	380	0.03%	0.004%
50	9.506	1245	1247	1252	rVB3	291	404	0.03%	0.004%
51	9.628	1264	1267	1268	rBV	254	252	0.02%	0.003%
52	9.659	1270	1272	1279	rVV3	802	1310	0.10%	0.014%
53	9.781	1289	1292	1295	rBV2	312	370	0.03%	0.004%
54	9.890	1308	1310	1314	rVB2	224	304	0.02%	0.003%
55	9.951	1317	1320	1322	rBV2	434	413	0.03%	0.004%
56	10.037	1325	1334	1343	rBV	154756	280156	20.55%	3.029%
57	10.134	1349	1350	1352	rBV2	471	312	0.02%	0.003%
58	10.323	1374	1381	1387	rBV	603224	1052118	77.19%	11.374%
59	10.390	1387	1392	1401	rVB	131161	230454	16.91%	2.491%
60	10.506	1407	1411	1415	rVB3	934	1462	0.11%	0.016%
61	10.579	1416	1423	1432	rBV	94916	167129	12.26%	1.807%
62	10.707	1438	1444	1449	rVB3	2797	4650	0.34%	0.050%
63	10.841	1464	1466	1470	rVB	400	334	0.02%	0.004%
64	10.927	1473	1480	1493	rBV	119505	206565	15.16%	2.233%
65	11.183	1517	1522	1524	rBV2	472	599	0.04%	0.006%
66	11.244	1531	1532	1534	rVB	303	213	0.02%	0.002%
67	11.274	1534	1537	1538	rBV2	380	300	0.02%	0.003%
68	11.292	1538	1540	1542	rBV	245	200	0.01%	0.002%
69	11.408	1557	1559	1561	rBV	238	184	0.01%	0.002%
70	11.561	1582	1584	1586	rVB	267	220	0.02%	0.002%
71	11.634	1588	1596	1606	rBV	604734	1033107	75.80%	11.168%
72	11.841	1624	1630	1637	rVB3	2037	3469	0.25%	0.038%
73	12.042	1661	1663	1666	rVB2	349	415	0.03%	0.004%
74	12.244	1693	1696	1700	rVB3	520	797	0.06%	0.009%
75	12.347	1707	1713	1715	rBV5	638	1071	0.08%	0.012%
76	12.475	1730	1734	1739	rBV4	705	1053	0.08%	0.011%

Data Path : Z:\voasrv\HPCHEM1\MSVOA_W\Data\VW062521\
 Data File : VW019326.D
 Acq On : 25 Jun 2021 14:11
 Operator : SY/VA
 Sample : M2808-18
 Misc : 4.19G/10ML/MSVOA_W/SOIL
 ALS Vial : 9 Sample Multiplier: 1

Instrument :
 MSVOA_W
 ClientSampleId :
 BGD7

Integration Parameters: LSCINT.P

Integrator: RTE
 Smoothing : OFF Filtering: 5
 Sampling : 1 Min Area: 0 % of largest Peak
 Start Thrs: 0.2 Max Peaks: 100
 Stop Thrs : 0 Peak Location: TOP

If leading or trailing edge < 100 prefer < Baseline drop else tangent >
 Peak separation: 5

Method : Z:\voasrv\HPCHEM1\MSVOA_W\Method\SFAMWLM060221SMA.M
 Title : SFAM01.0

77	12.518	1739	1741	1743	rVB2	560	297	0.02%	0.003%
78	12.536	1743	1744	1746	rBV2	243	227	0.02%	0.002%
79	12.603	1749	1755	1761	rBV3	3810	6535	0.48%	0.071%
80	12.695	1763	1770	1777	rBV	188544	303080	22.24%	3.276%
81	12.823	1790	1791	1793	rBV	225	214	0.02%	0.002%
82	12.890	1795	1802	1806	rVV2	6870	11304	0.83%	0.122%
83	12.932	1807	1809	1816	rVB6	3214	4856	0.36%	0.052%
84	13.036	1824	1826	1827	rVB	415	268	0.02%	0.003%
85	13.188	1848	1851	1857	rVB3	689	1286	0.09%	0.014%
86	13.243	1858	1860	1861	rBV	521	274	0.02%	0.003%
87	13.402	1881	1886	1890	rBV5	1762	3349	0.25%	0.036%
88	13.560	1904	1912	1921	rBV	415361	668828	49.07%	7.230%
89	13.646	1921	1926	1939	rVB	51360	84410	6.19%	0.913%
90	13.853	1953	1960	1967	rBV	326556	532314	39.06%	5.755%
91	14.012	1983	1986	1989	rBV4	765	1119	0.08%	0.012%
92	14.066	1991	1995	2000	rVB	8224	12857	0.94%	0.139%
93	14.322	2031	2037	2044	rBV7	4259	7831	0.57%	0.085%
94	14.457	2056	2059	2063	rVB3	1824	2793	0.20%	0.030%
95	14.627	2083	2087	2088	rBV3	773	1009	0.07%	0.011%
96	14.749	2105	2107	2110	rVB4	611	429	0.03%	0.005%
97	14.926	2133	2136	2137	rBV2	1124	1045	0.08%	0.011%
98	15.487	2224	2228	2237	rVB	7306	13265	0.97%	0.143%
99	15.725	2265	2267	2273	rBV5	646	1123	0.08%	0.012%
100	16.712	2427	2429	2430	rBV	569	604	0.04%	0.007%

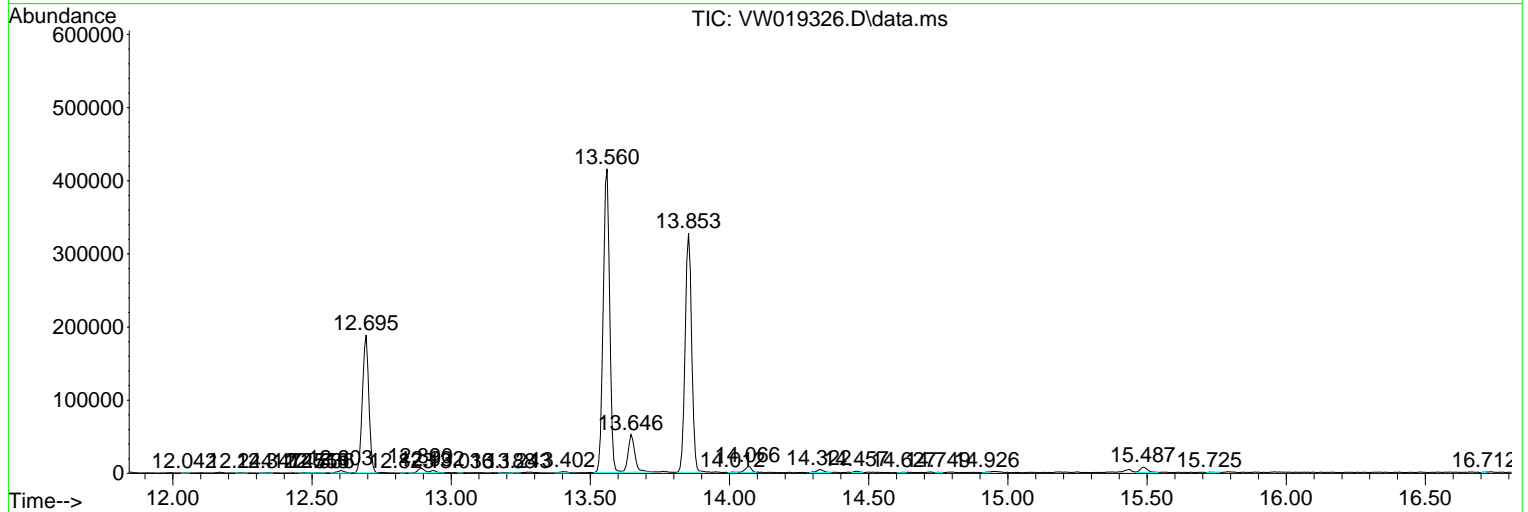
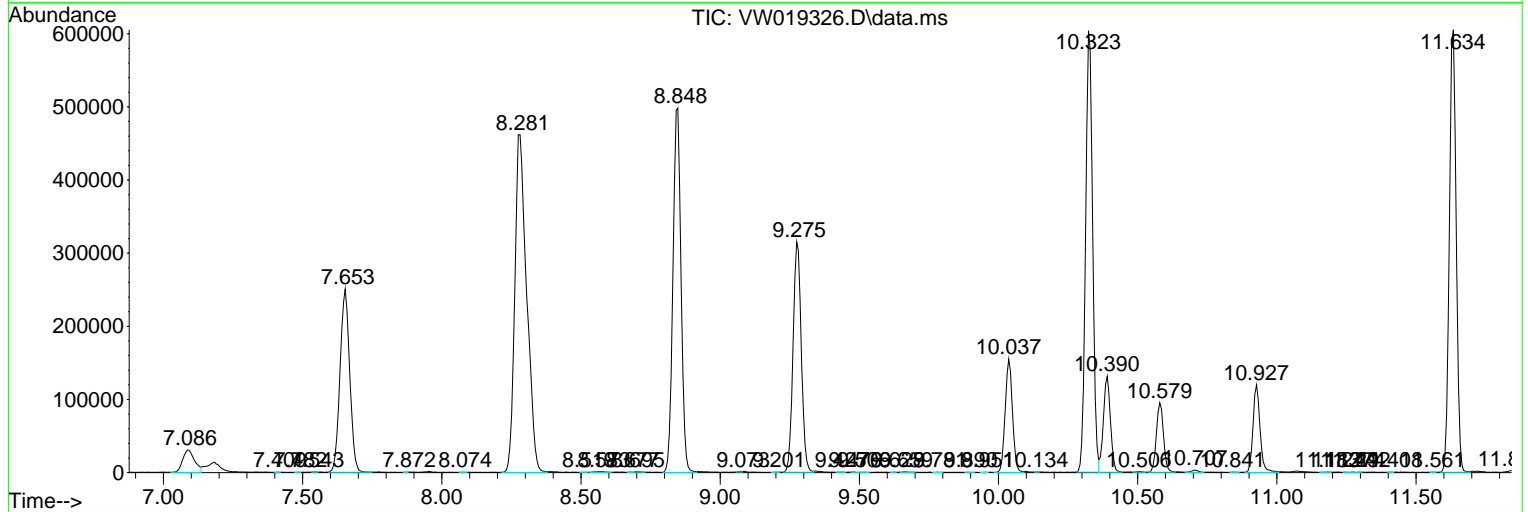
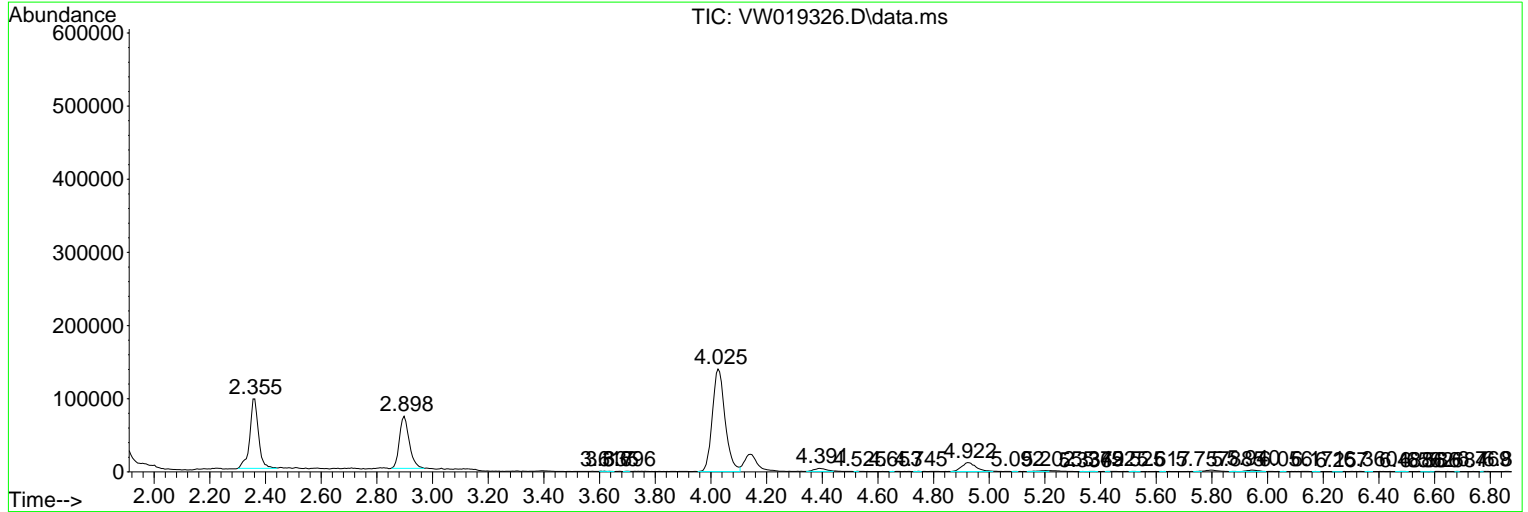
Sum of corrected areas: 9250292

Data Path : Z:\voasrv\HPCHEM1\MSVOA_W\Data\VW062521\
 Data File : VW019326.D
 Acq On : 25 Jun 2021 14:11
 Operator : SY/VA
 Sample : M2808-18
 Misc : 4.19G/10ML/MSVOA_W/SOIL
 ALS Vial : 9 Sample Multiplier: 1

Instrument :
 MSVOA_W
 ClientSampleId :
 BGD7

Quant Method : Z:\voasrv\HPCHEM1\MSVOA_W\Method\SFAMWLM060221SMA.M
 Quant Title : SFAM01.0

TIC Library : C:\DATABASE\NIST11.L
 TIC Integration Parameters: LSCINT.P



Data Path : Z:\voasrv\HPCHEM1\MSVOA_W\Data\VW062521\
 Data File : VW019326.D
 Acq On : 25 Jun 2021 14:11
 Operator : SY/VA
 Sample : M2808-18
 Misc : 4.19G/10ML/MSVOA_W/SOIL
 ALS Vial : 9 Sample Multiplier: 1

Instrument :
 MSVOA_W
 ClientSampled :
 BGD7

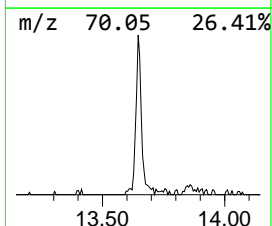
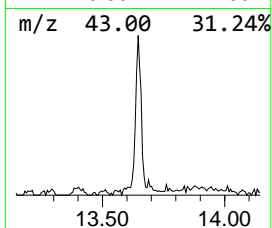
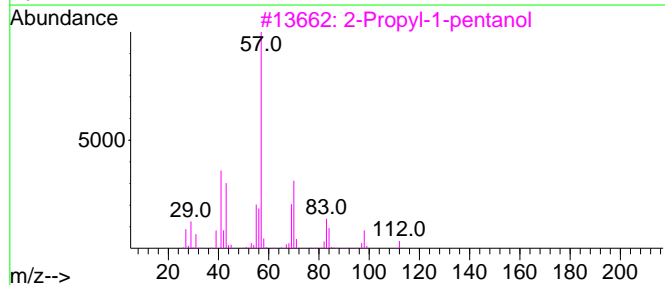
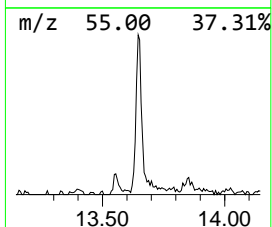
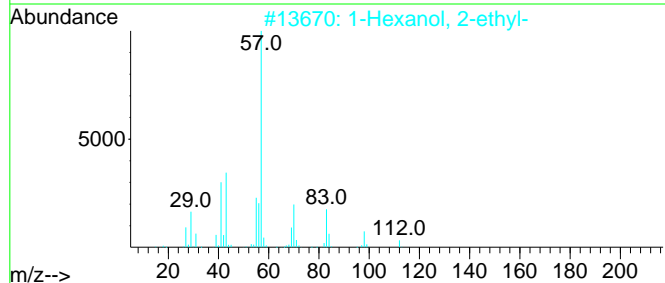
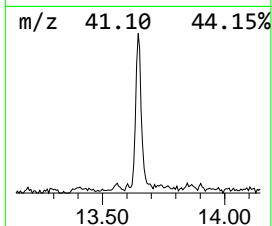
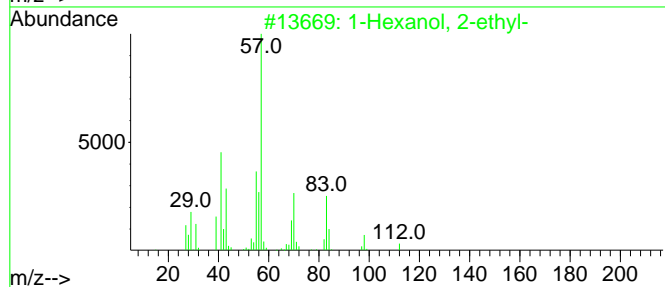
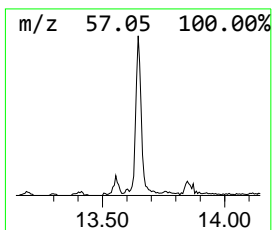
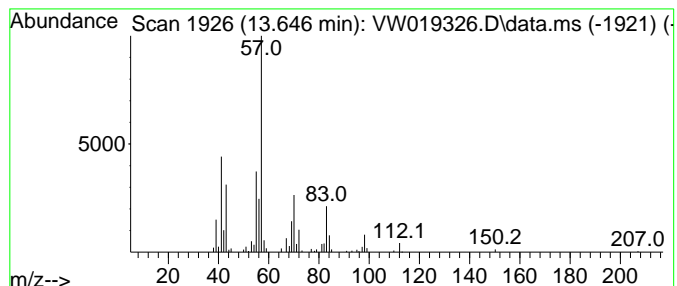
Quant Method : Z:\voasrv\HPCHEM1\MSVOA_W\Method\SFAMWLM060221SMA.M
 Quant Title : SFAM01.0

TIC Library : C:\DATABASE\NIST11.L
 TIC Integration Parameters: LSCINT.P

 Peak Number 2 1-Hexanol, 2-ethyl- Concentration Rank 2

R.T.	EstConc	Area	Relative to ISTD	R.T.
13.646	3.16 ug/L	84410	1,4-Dichlorobenzene-d4	13.560

Hit#	of 5	Tentative ID	MW	MolForm	CAS#	Qual
1		1-Hexanol, 2-ethyl-	130	C8H18O	000104-76-7	86
2		1-Hexanol, 2-ethyl-	130	C8H18O	000104-76-7	72
3		2-Propyl-1-pentanol	130	C8H18O	058175-57-8	59
4		2-Propyl-1-pentanol	130	C8H18O	058175-57-8	53
5		Heptane, 1,1'-oxybis-	214	C14H30O	000629-64-1	50



Data Path : Z:\voasrv\HPCHEM1\MSVOA_W\Data\VW062521\
Data File : VW019326.D
Acq On : 25 Jun 2021 14:11
Operator : SY/VA
Sample : M2808-18
Misc : 4.19G/10ML/MSVOA_W/SOIL
ALS Vial : 9 Sample Multiplier: 1

Instrument :
MSVOA_W
ClientSampleId :
BGDP7

Quant Method : Z:\voasrv\HPCHEM1\MSVOA_W\Method\SFAMWLM060221SMA.M
Quant Title : SFAM01.0

TIC Library : C:\DATABASE\NIST11.L
TIC Integration Parameters: LSCINT.P

TIC Top Hit name	RT	EstConc	Units	Response	--Internal Standard--			
					#	RT	Resp	Conc
1-Hexanol, 2-et...	13.646	3.2	ug/L	84410	3	13.560	668828	25.0