

Data Path : Z:\voasrv\HPCHEM1\MSVOA_W\Data\VW080922\
 Data File : VW024214.D
 Acq On : 09 Aug 2022 17:35
 Operator : SY/VA
 Sample : VIBLK
 Misc : 5.00g/10mL/MSVOA_W/SOIL
 ALS Vial : 1 Sample Multiplier: 1

Instrument :
 MSVOA_W
 ClientSampleId :
 VIBLK531

Quant Time: Aug 10 01:11:23 2022
 Quant Method : Z:\voasrv\HPCHEM1\MSVOA_W\Method\SFAMWLM080422SMA.M
 Quant Title : SFAM01.0
 QLast Update : Wed Aug 10 01:09:21 2022
 Response via : Initial Calibration

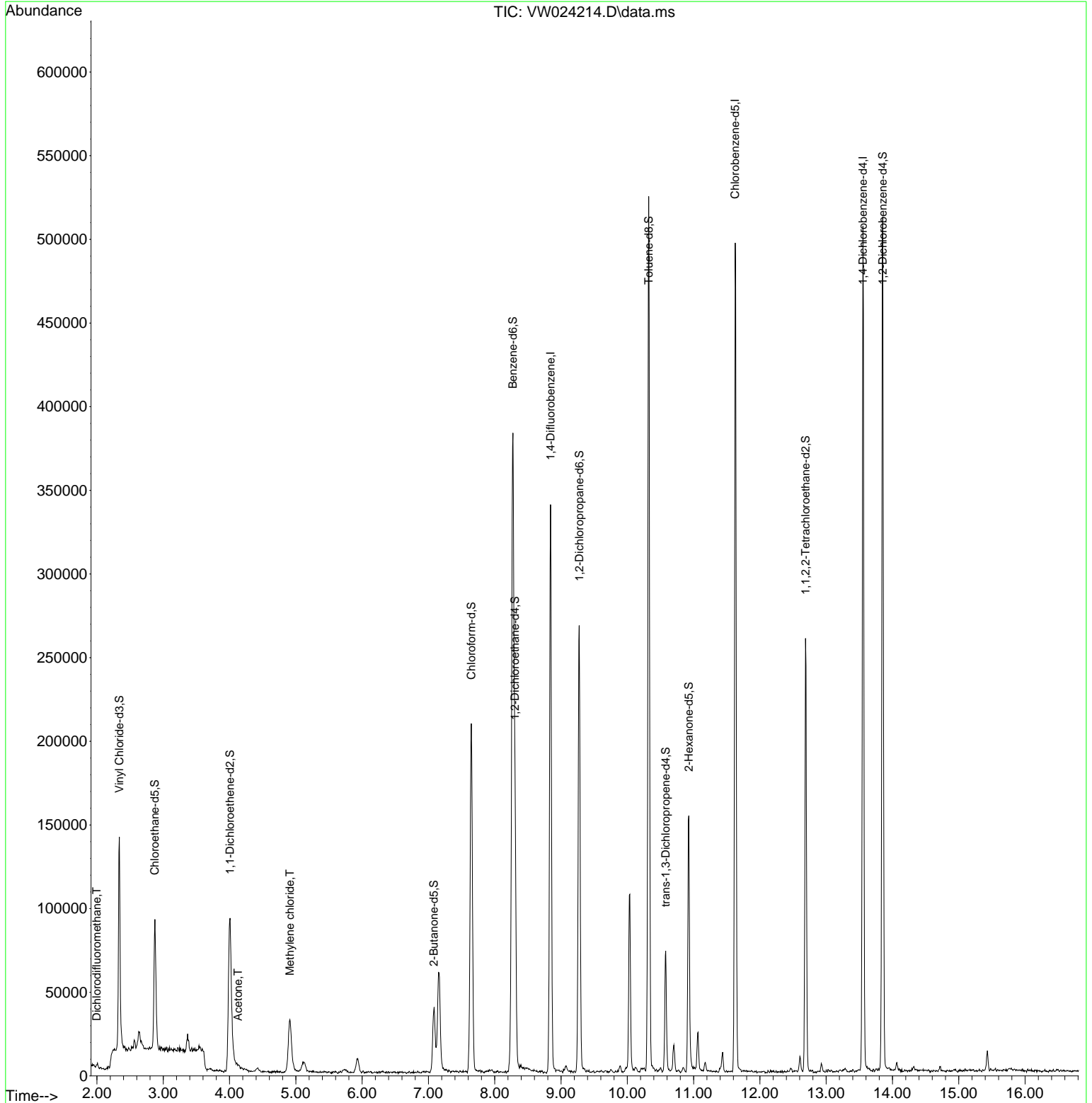
Compound	R.T.	QIon	Response	Conc	Units	Dev(Min)
Internal Standards						
1) 1,4-Difluorobenzene	8.842	114	271330	25.000	ug/L	0.00
28) Chlorobenzene-d5	11.628	117	273769	25.000	ug/L	0.00
58) 1,4-Dichlorobenzene-d4	13.554	152	125007	25.000	ug/L	0.00
System Monitoring Compounds						
4) Vinyl Chloride-d3	2.337	65	136971	24.151	ug/L	0.00
Spiked Amount	25.000	Range 30 - 150	Recovery =	96.600%		
7) Chloroethane-d5	2.873	69	87978	24.902	ug/L	0.00
Spiked Amount	25.000	Range 30 - 150	Recovery =	99.600%		
11) 1,1-Dichloroethene-d2	4.007	63	103814	16.062	ug/L	0.00
Spiked Amount	25.000	Range 45 - 110	Recovery =	64.240%		
21) 2-Butanone-d5	7.080	46	61925	58.688	ug/L	0.00
Spiked Amount	50.000	Range 20 - 135	Recovery =	117.380%		
24) Chloroform-d	7.647	84	206587	25.163	ug/L	0.00
Spiked Amount	25.000	Range 40 - 150	Recovery =	100.640%		
26) 1,2-Dichloroethane-d4	8.305	65	120077	26.344	ug/L	0.00
Spiked Amount	25.000	Range 70 - 130	Recovery =	105.360%		
32) Benzene-d6	8.275	84	386587	23.943	ug/L	0.00
Spiked Amount	25.000	Range 20 - 135	Recovery =	95.760%		
36) 1,2-Dichloropropane-d6	9.275	67	118421	24.841	ug/L	0.00
Spiked Amount	25.000	Range 70 - 120	Recovery =	99.360%		
41) Toluene-d8	10.323	98	344806	22.848	ug/L	0.00
Spiked Amount	25.000	Range 30 - 130	Recovery =	91.400%		
43) trans-1,3-Dichloroprop...	10.579	79	37220	17.826	ug/L	0.00
Spiked Amount	25.000	Range 30 - 135	Recovery =	71.320%		
47) 2-Hexanone-d5	10.927	63	49191	55.866	ug/L	0.00
Spiked Amount	50.000	Range 20 - 135	Recovery =	111.740%		
56) 1,1,2,2-Tetrachloroeth...	12.689	84	121240	26.213	ug/L	0.00
Spiked Amount	25.000	Range 45 - 120	Recovery =	104.840%		
66) 1,2-Dichlorobenzene-d4	13.853	152	132473	28.959	ug/L	0.00
Spiked Amount	25.000	Range 75 - 120	Recovery =	115.840%		
Target Compounds						
2) Dichlorodifluoromethane	1.995	85	1631	0.683	ug/L	92
13) Acetone	4.129	43	3880	4.995	ug/L	63
16) Methylene chloride	4.909	84	26969	5.636	ug/L	100

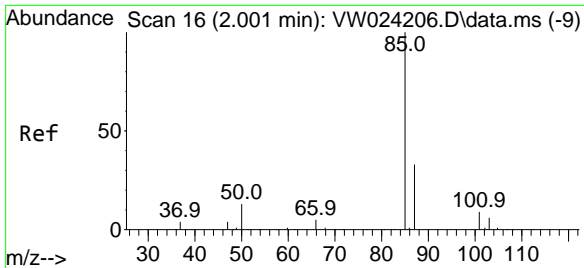
(#) = qualifier out of range (m) = manual integration (+) = signals summed

Data Path : Z:\voasrv\HPCHEM1\MSVOA_W\Data\VW080922\
 Data File : VW024214.D
 Acq On : 09 Aug 2022 17:35
 Operator : SY/VA
 Sample : VIBLK
 Misc : 5.00g/10mL/MSVOA_W/SOIL
 ALS Vial : 1 Sample Multiplier: 1

Instrument :
 MSVOA_W
 ClientSampleId :
 VIBLK531

Quant Time: Aug 10 01:11:23 2022
 Quant Method : Z:\voasrv\HPCHEM1\MSVOA_W\Method\SFAMWLM080422SMA.M
 Quant Title : SFAM01.0
 QLast Update : Wed Aug 10 01:09:21 2022
 Response via : Initial Calibration

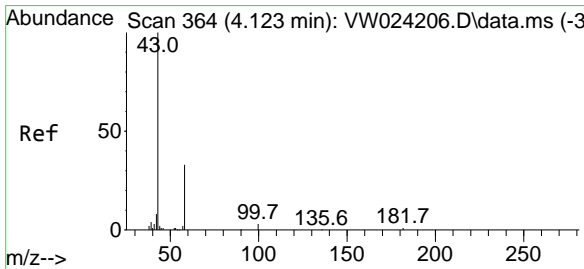
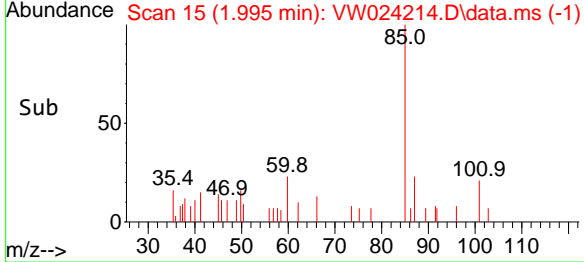
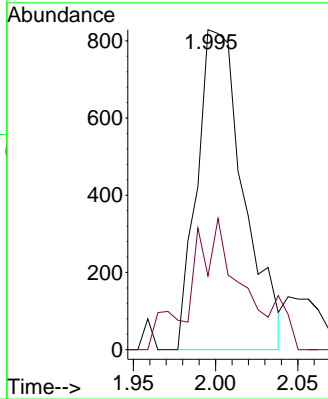
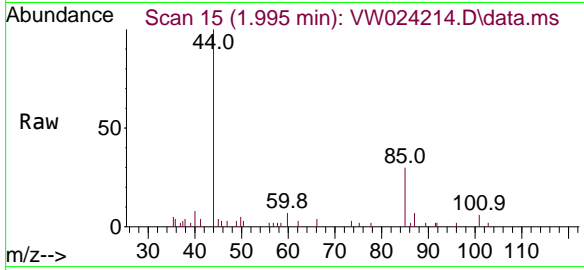




#2
 Dichlorodifluoromethane
 Concen: 0.683 ug/L
 RT: 1.995 min Scan# 11
 Delta R.T. -0.006 min
 Lab File: VW024214.D
 Acq: 09 Aug 2022 17:35

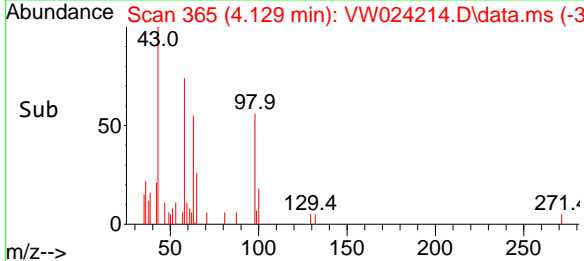
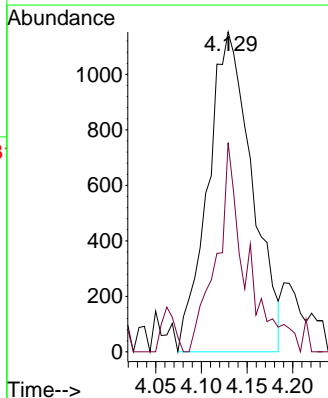
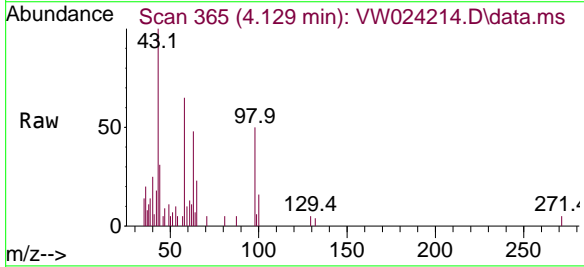
Instrument : MSVOA_W
 ClientSampleId : VIBLK531

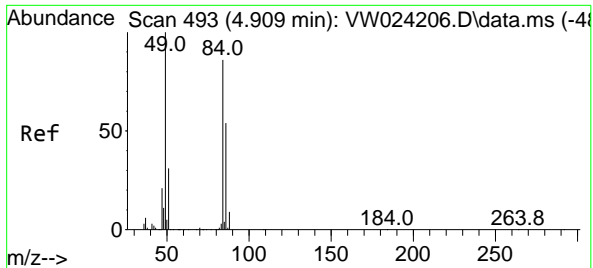
Tgt Ion: 85 Resp: 1631
 Ion Ratio Lower Upper
 85 100
 87 35.0 24.5 36.7



#13
 Acetone
 Concen: 4.995 ug/L
 RT: 4.129 min Scan# 365
 Delta R.T. 0.006 min
 Lab File: VW024214.D
 Acq: 09 Aug 2022 17:35

Tgt Ion: 43 Resp: 3880
 Ion Ratio Lower Upper
 43 100
 58 31.6 0.0 31.8





#16
 Methylene chloride
 Concen: 5.636 ug/L
 RT: 4.909 min Scan# 493
 Delta R.T. 0.000 min
 Lab File: VW024214.D
 Acq: 09 Aug 2022 17:35

Instrument : MSVOA_W
 ClientSampleId : VIBLK531

Tgt Ion: 84 Resp: 26969

Ion	Ratio	Lower	Upper
84	100		
86	62.0	42.8	79.6
49	121.5	85.3	158.3

