

Data Path : Z:\VOASRV\HPCHEM1\MSVOA_W\DATA\VW081019\
 Data File : VW011790.D
 Acq On : 09 Aug 2019 01:30
 Operator : SY/VA
 Sample : K4228-09
 Misc : 5.93G/5ML/MSVOA_W/SOIL
 ALS Vial : 34 Sample Multiplier: 1

Instrument :
 MSVOA_W
 ClientSampleId :
 2S-F2-(1)

Quant Time: Aug 09 05:38:57 2019
 Quant Method : Z:\VOASRV\HPCHEM1\MSVOA_W\METHOD\82W072719S.M
 Quant Title : SW846 8260
 QLast Update : Sat Jul 27 00:23:30 2019
 Response via : Initial Calibration

Internal Standards	R.T.	QIon	Response	Conc	Units	Dev(Min)
1) Pentafluorobenzene	7.95	168	211699	50.00	ug/l	0.00
34) 1,4-Difluorobenzene	8.84	114	350872	50.00	ug/l	0.00
63) Chlorobenzene-d5	11.63	117	289985	50.00	ug/l	0.00
72) 1,4-Dichlorobenzene-d4	13.56	152	114951	50.00	ug/l	0.00

System Monitoring Compounds

33) 1,2-Dichloroethane-d4	8.31	65	140664	57.87	ug/l	0.00
Spiked Amount	50.000		Recovery	=	115.74%	
35) Dibromofluoromethane	7.88	113	110258	56.01	ug/l	0.00
Spiked Amount	50.000		Recovery	=	112.02%	
50) Toluene-d8	10.32	98	434828	53.95	ug/l	0.00
Spiked Amount	50.000		Recovery	=	107.90%	
62) 4-Bromofluorobenzene	12.62	95	134517	46.82	ug/l	0.00
Spiked Amount	50.000		Recovery	=	93.64%	

Target Compounds

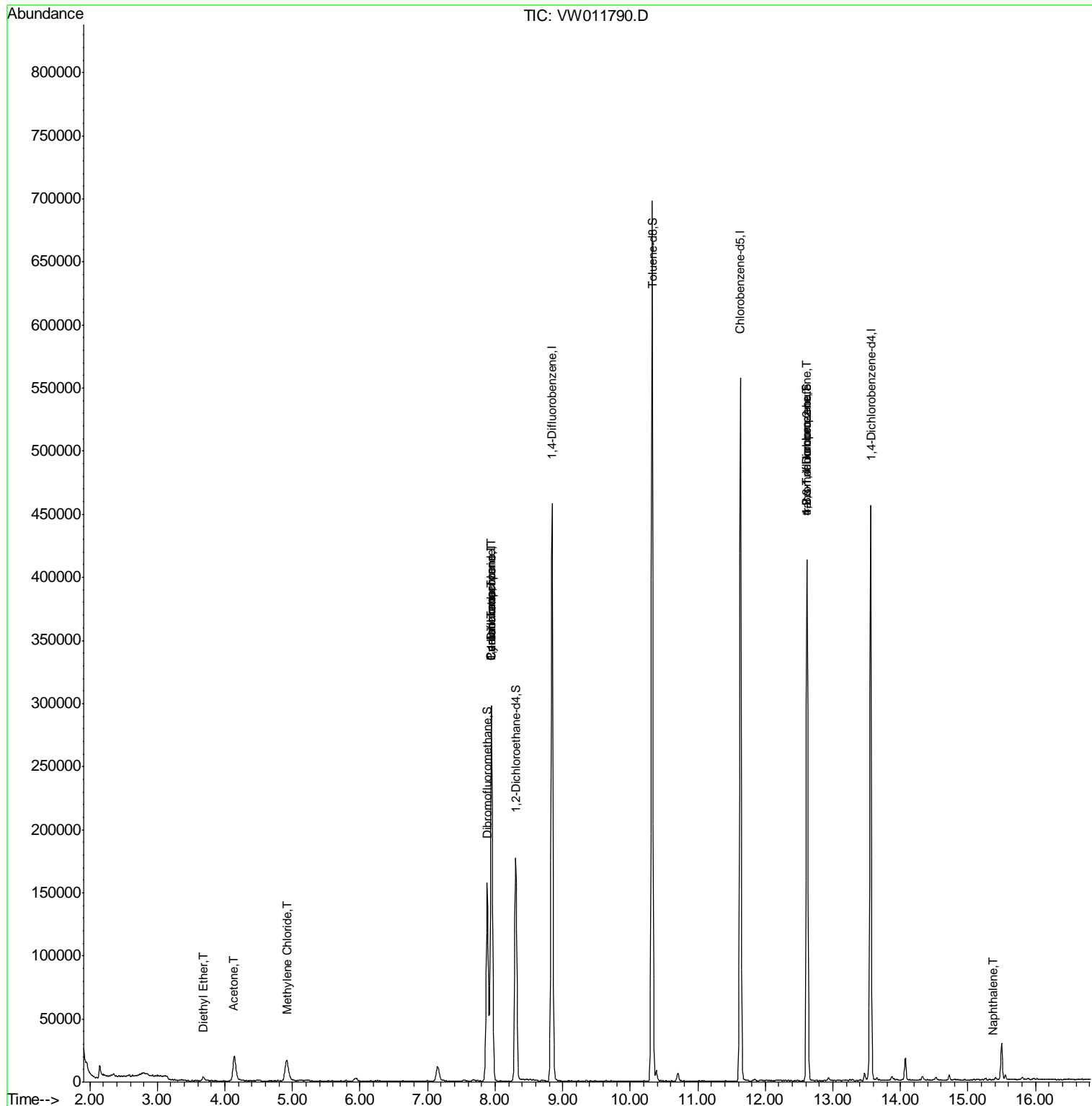
					Qvalue
8) Diethyl Ether	3.69	74	1468	1.176 ug/l	71
11) Tert butyl alcohol	5.20	59	441	Below Cal	100
16) Acetone	4.14	43	42086	54.427 ug/l	95
20) Methylene Chloride	4.92	84	13355	5.008 ug/l	97
31) Cyclohexane	7.95	56	5388	1.185 ug/l #	1
36) 1,1-Dichloropropene	7.95	75	19356	5.305 ug/l #	52
38) Carbon Tetrachloride	7.95	117	21631	6.926 ug/l #	16
76) 1,2,3-Trichloropropane	12.62	75	72581	59.673 ug/l #	100
81) trans-1,4-Dichloro-2-buten	12.62	75	72581	137.525 ug/l #	6
95) Naphthalene	15.37	128	312	2.132 ug/l #	69

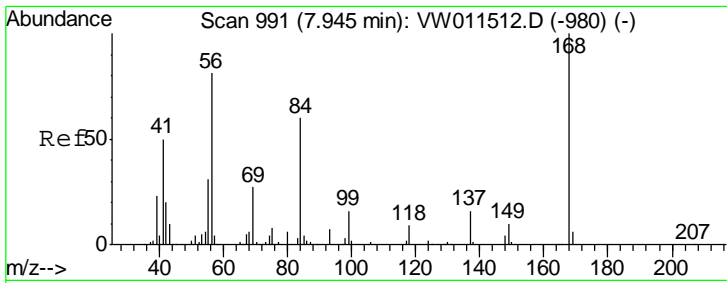
(#) = qualifier out of range (m) = manual integration (+) = signals summed

Data Path : Z:\VOASRV\HPCHEM1\MSVOA_W\DATA\VW081019\
 Data File : VW011790.D
 Acq On : 09 Aug 2019 01:30
 Operator : SY/VA
 Sample : K4228-09
 Misc : 5.93G/5ML/MSVOA_W/SOIL
 ALS Vial : 34 Sample Multiplier: 1

Instrument :
 MSVOA_W
 ClientSampleId :
 2S-F2-(1)

Quant Time: Aug 09 05:38:57 2019
 Quant Method : Z:\VOASRV\HPCHEM1\MSVOA_W\METHOD\82W072719S.M
 Quant Title : SW846 8260
 QLast Update : Sat Jul 27 00:23:30 2019
 Response via : Initial Calibration

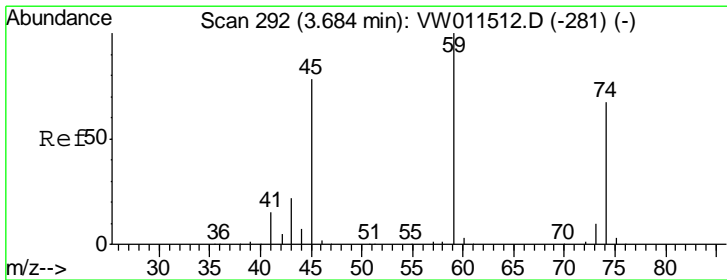
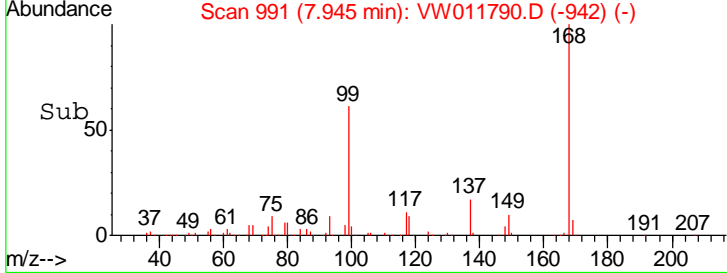
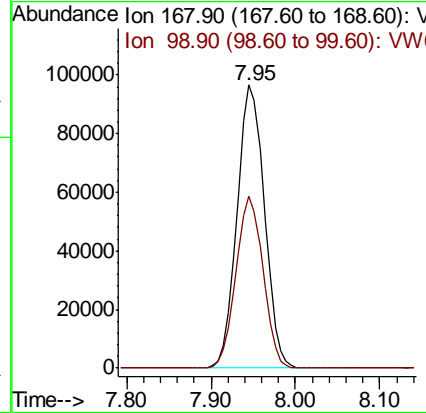
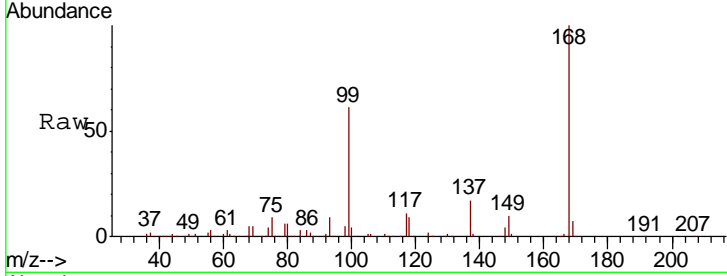




#1
 Pentafluorobenzene
 Concen: 50.000 ug/l
 RT: 7.95 min Scan# 991
 Delta R.T. -0.00 min
 Lab File: VW011790.D
 Acq: 09 Aug 2019 01:30

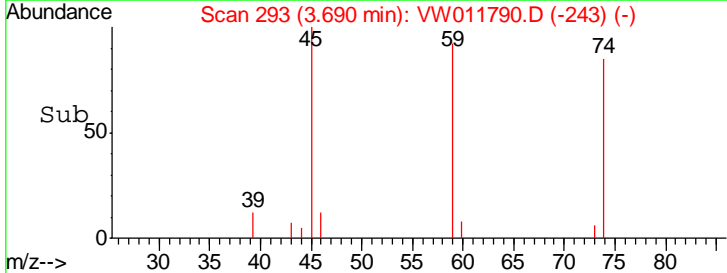
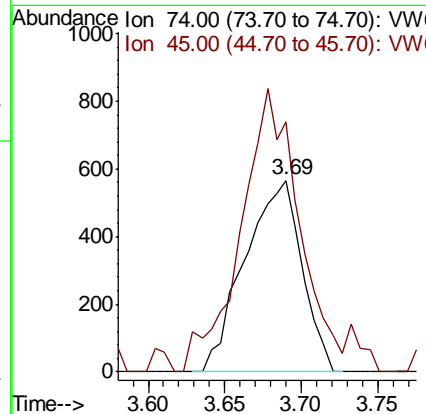
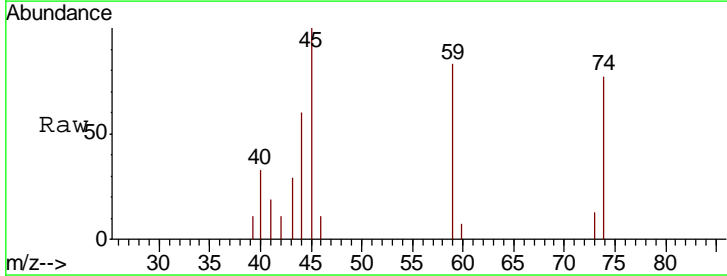
Instrument :
 MSVOA_W
 ClientSampled :
 2S-F2-(1)

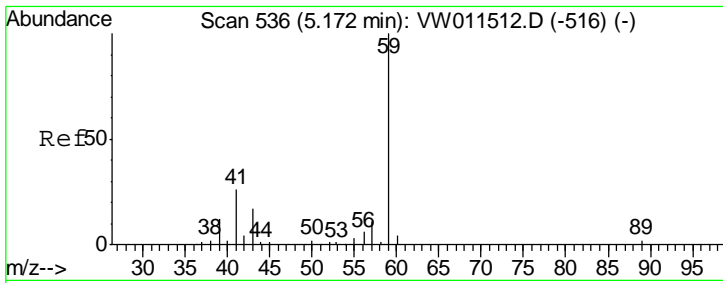
Tgt Ion: 168 Resp: 211699
 Ion Ratio Lower Upper
 168 100
 99 60.8 48.2 72.4



#8
 Diethyl Ether
 Concen: 1.176 ug/l
 RT: 3.69 min Scan# 293
 Delta R.T. 0.01 min
 Lab File: VW011790.D
 Acq: 09 Aug 2019 01:30

Tgt Ion: 74 Resp: 1468
 Ion Ratio Lower Upper
 74 100
 45 151.0 59.6 178.8

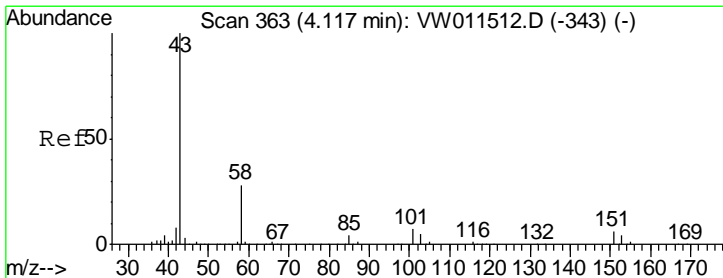
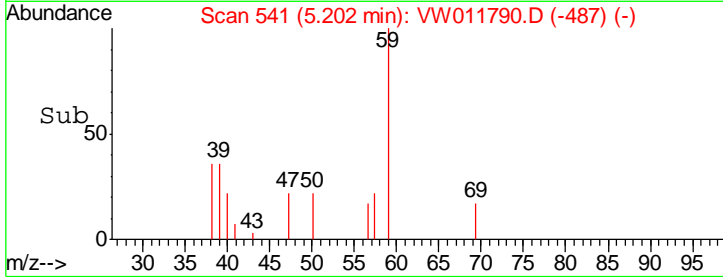
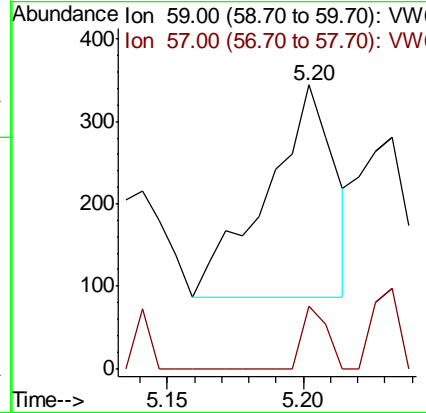
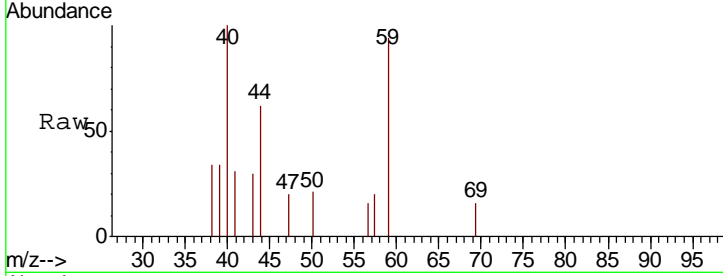




#11
 Tert butyl alcohol
 Concen: Below Cal
 RT: 5.20 min Scan# 541
 Delta R.T. 0.03 min
 Lab File: VW011790.D
 Acq: 09 Aug 2019 01:30

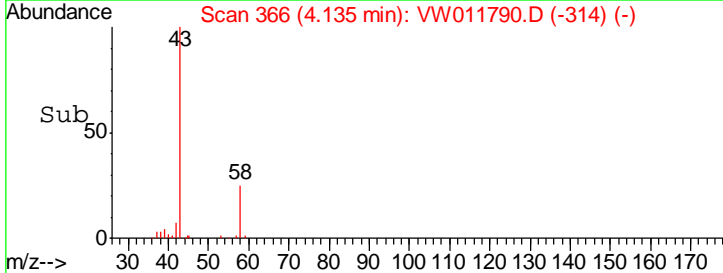
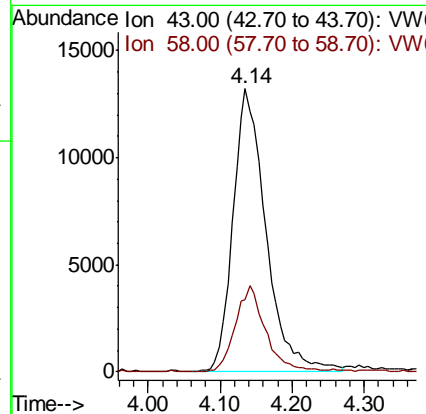
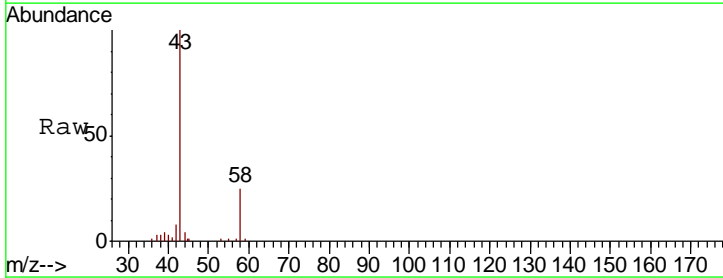
Instrument :
 MSVOA_W
ClientSampled :
 2S-F2-(1)

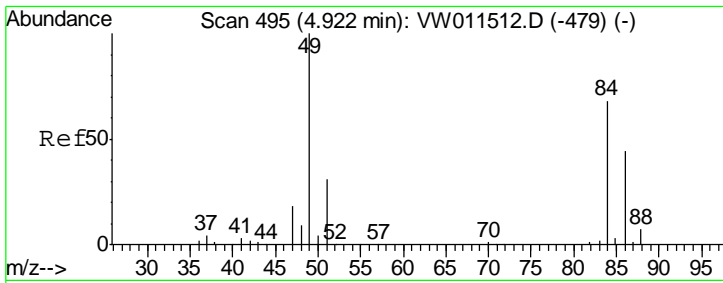
Tgt Ion	Resp	Lower	Upper
59	100		
57	10.7	8.5	12.7



#16
 Acetone
 Concen: 54.427 ug/l
 RT: 4.14 min Scan# 366
 Delta R.T. 0.02 min
 Lab File: VW011790.D
 Acq: 09 Aug 2019 01:30

Tgt Ion	Resp	Lower	Upper
43	100		
58	25.4	22.3	33.5

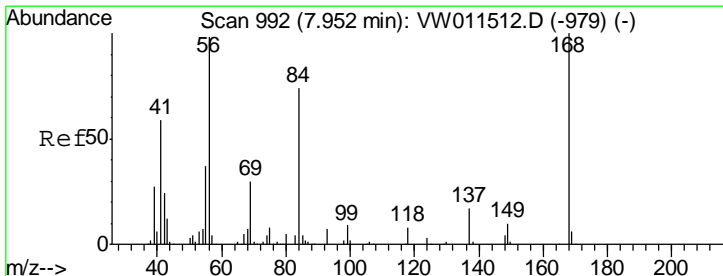
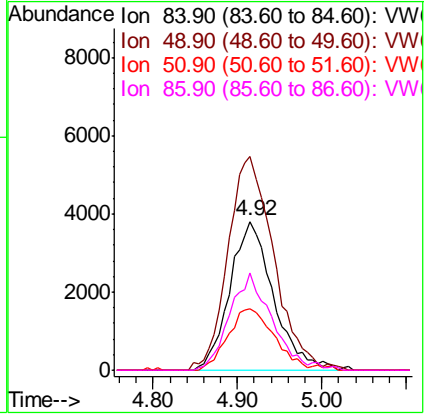
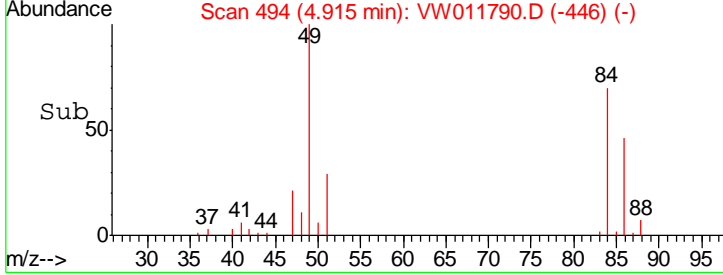
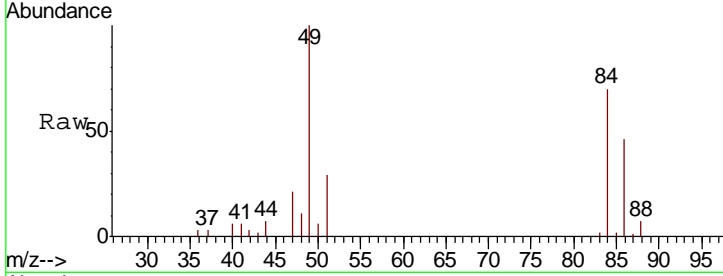




#20
 Methylene Chloride
 Concen: 5.008 ug/l
 RT: 4.92 min Scan# 494
 Delta R.T. -0.01 min
 Lab File: VW011790.D
 Acq: 09 Aug 2019 01:30

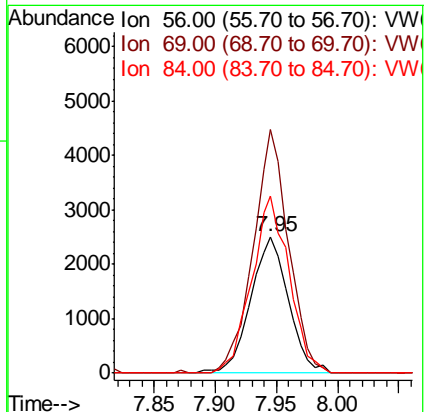
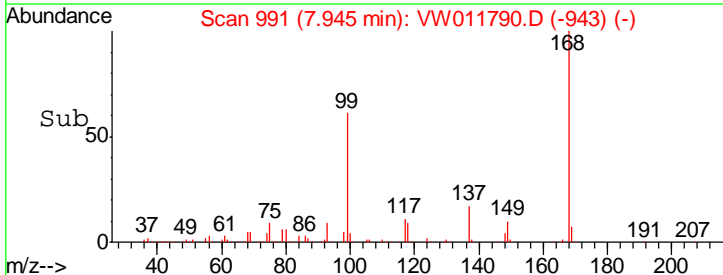
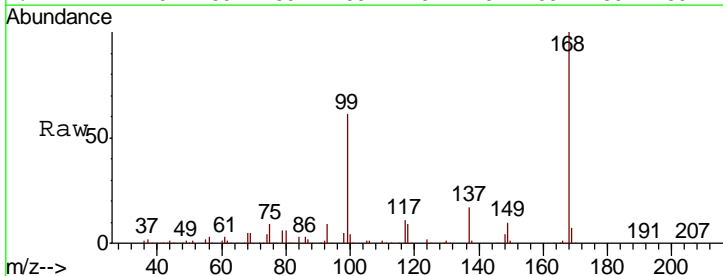
Instrument :
 MSVOA_W
 ClientSampled :
 2S-F2-(1)

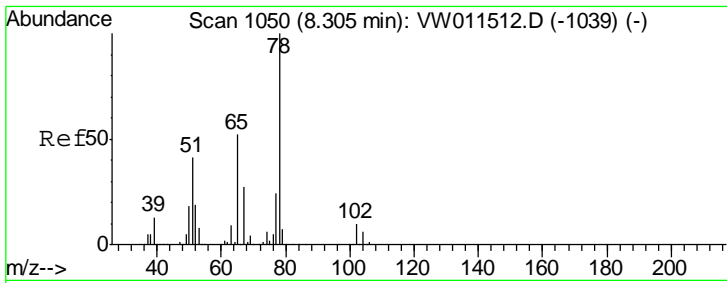
Tgt Ion	Resp	Lower	Upper
84	13355		
49	143.3	117.8	176.6
51	41.3	37.0	55.4
86	65.4	51.8	77.8



#31
 Cyclohexane
 Concen: 1.185 ug/l
 RT: 7.95 min Scan# 991
 Delta R.T. -0.01 min
 Lab File: VW011790.D
 Acq: 09 Aug 2019 01:30

Tgt Ion	Resp	Lower	Upper
56	5388		
69	178.6	24.3	36.5#
84	130.0	60.4	90.6#

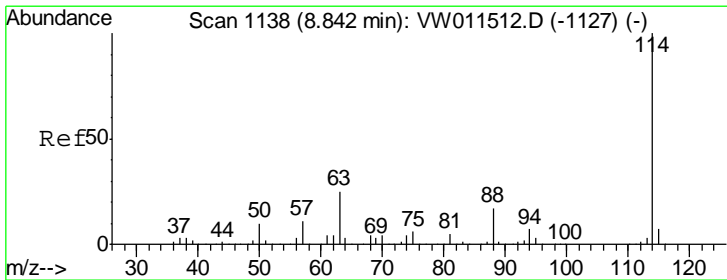
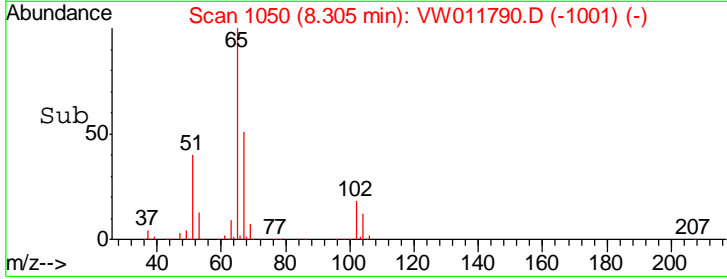
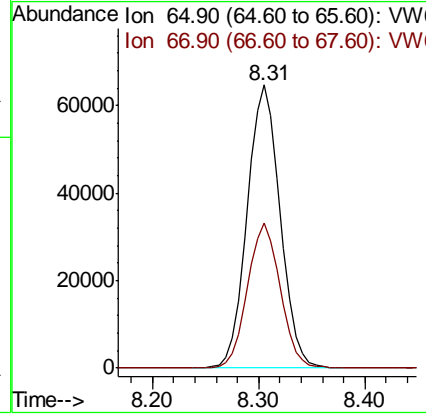
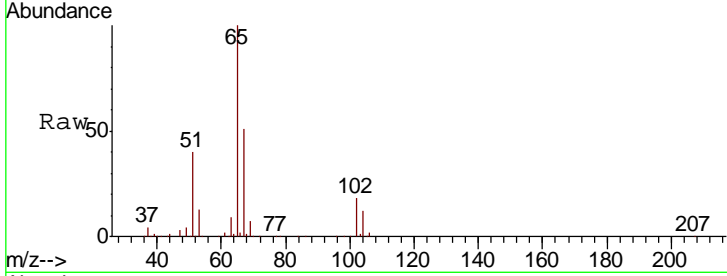




#33
 1,2-Dichloroethane-d4
 Concen: 57.865 ug/l
 RT: 8.31 min Scan# 1050
 Delta R.T. -0.00 min
 Lab File: VW011790.D
 Acq: 09 Aug 2019 01:30

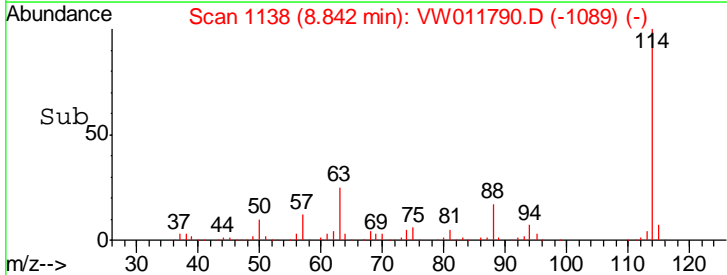
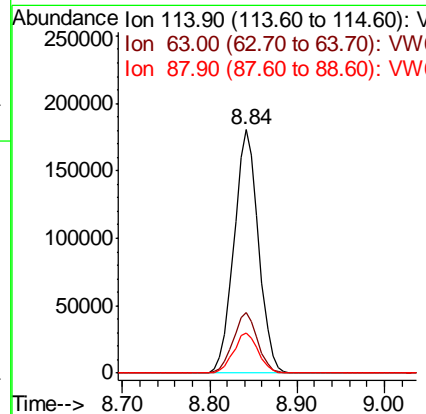
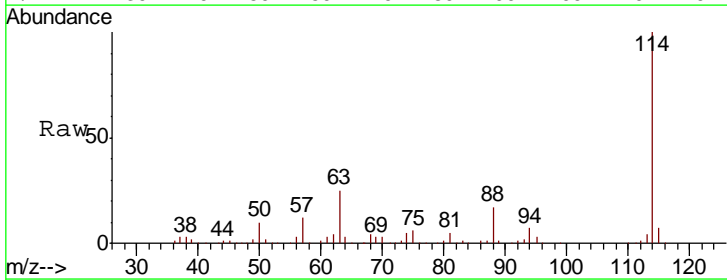
Instrument :
 MSVOA_W
 ClientSampled :
 2S-F2-(1)

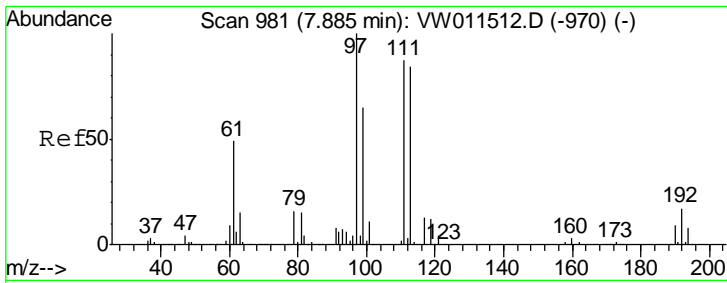
Tgt Ion: 65 Resp: 140664
 Ion Ratio Lower Upper
 65 100
 67 51.1 0.0 105.2



#34
 1,4-Difluorobenzene
 Concen: 50.000 ug/l
 RT: 8.84 min Scan# 1138
 Delta R.T. -0.00 min
 Lab File: VW011790.D
 Acq: 09 Aug 2019 01:30

Tgt Ion: 114 Resp: 350872
 Ion Ratio Lower Upper
 114 100
 63 25.0 0.0 49.2
 88 16.6 0.0 33.8

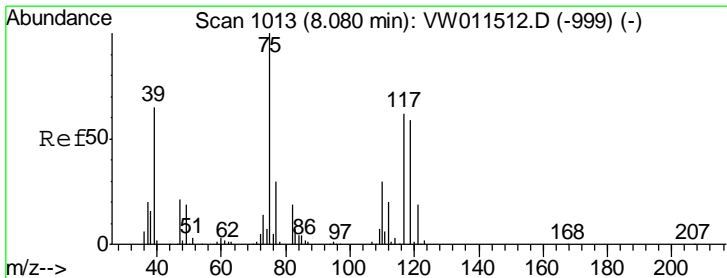
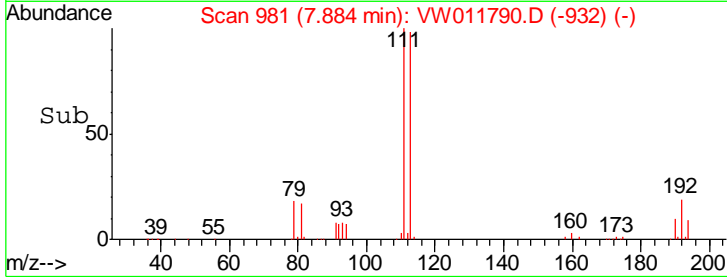
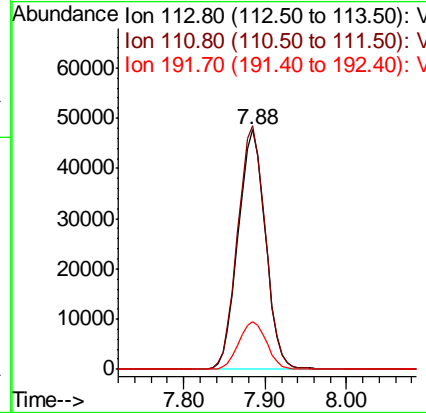
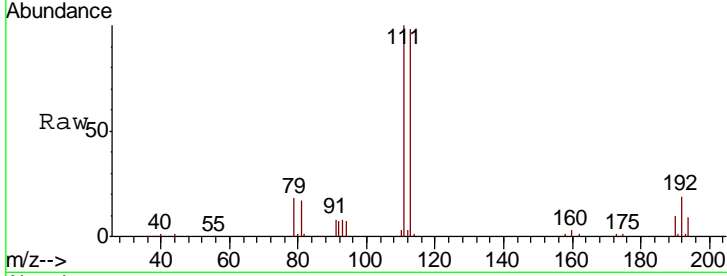




#35
 Dibromofluoromethane
 Concen: 56.012 ug/l
 RT: 7.88 min Scan# 981
 Delta R.T. -0.00 min
 Lab File: VW011790.D
 Acq: 09 Aug 2019 01:30

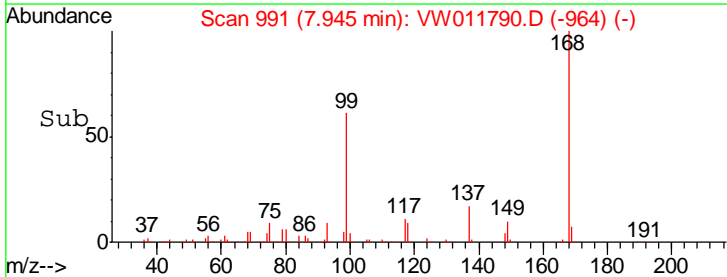
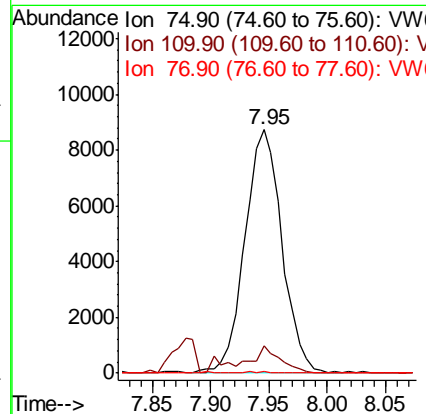
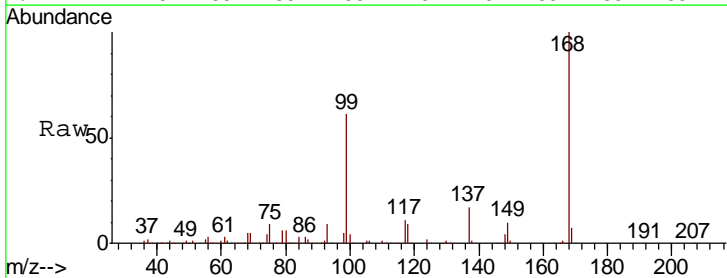
Instrument :
 MSVOA_W
 ClientSampled :
 2S-F2-(1)

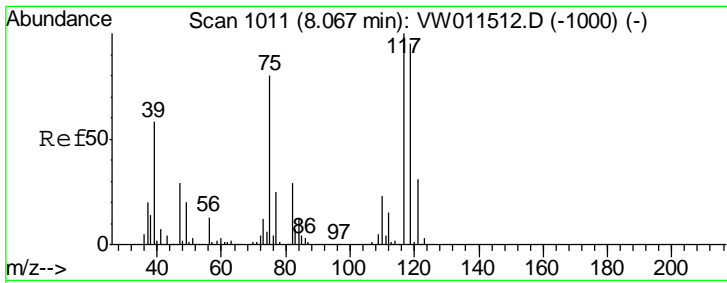
Tgt Ion	Resp	Lower	Upper
113	110258		
111	102.7	82.7	124.1
192	19.9	16.1	24.1



#36
 1,1-Dichloropropene
 Concen: 5.305 ug/l
 RT: 7.95 min Scan# 991
 Delta R.T. -0.13 min
 Lab File: VW011790.D
 Acq: 09 Aug 2019 01:30

Tgt Ion	Resp	Lower	Upper
75	19356		
75	100		
110	8.4	15.6	46.8#
77	0.2	24.3	36.5#

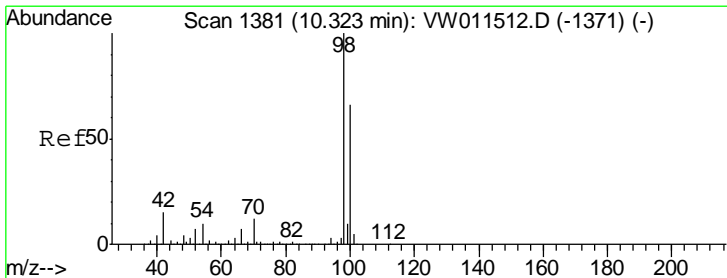
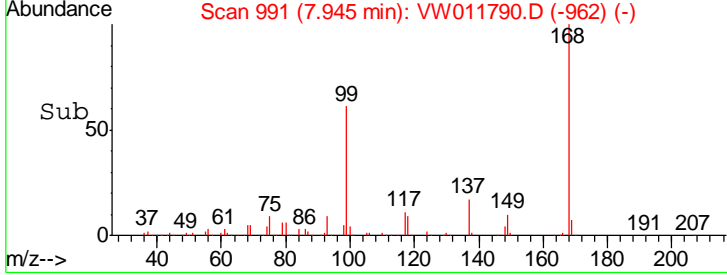
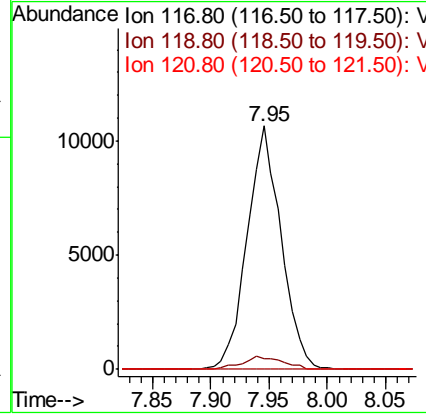
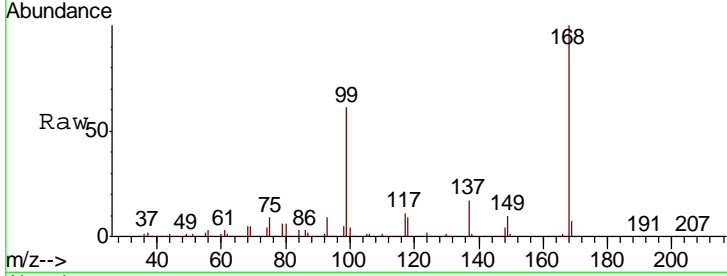




#38
 Carbon Tetrachloride
 Concen: 6.926 ug/l
 RT: 7.95 min Scan# 991
 Delta R.T. -0.12 min
 Lab File: VW011790.D
 Acq: 09 Aug 2019 01:30

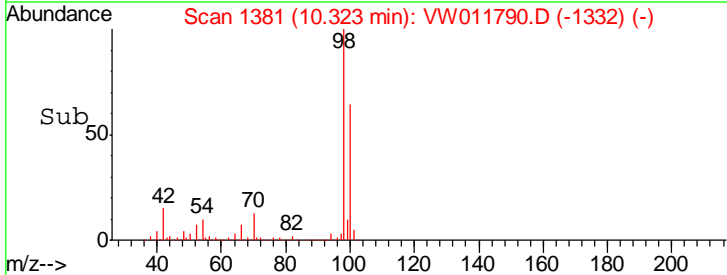
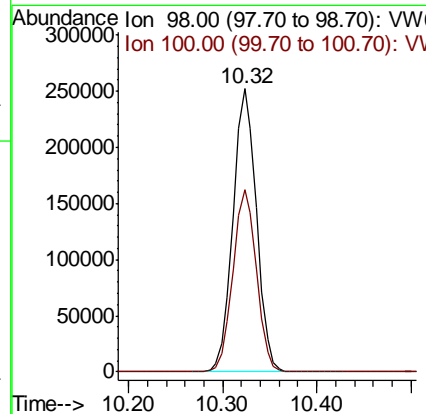
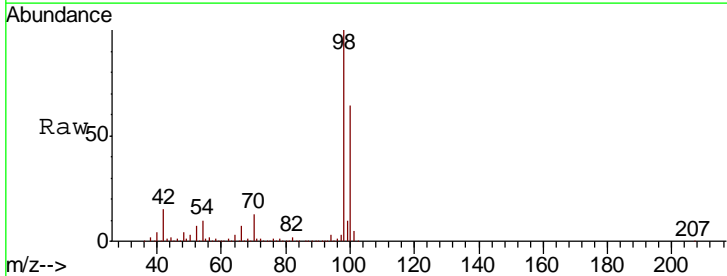
Instrument :
 MSVOA_W
 ClientSampled :
 2S-F2-(1)

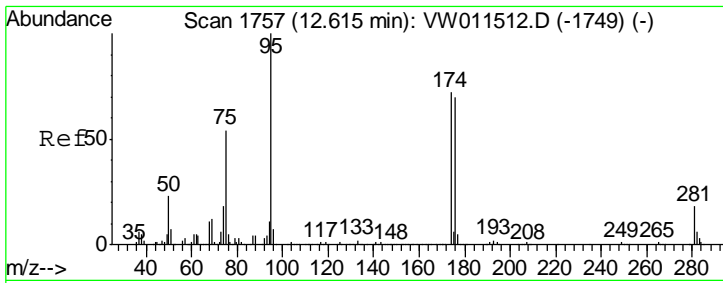
Tgt Ion	Resp	Lower	Upper
117	21631		
117	100		
119	4.4	75.8	113.6#
121	0.0	24.7	37.1#



#50
 Toluene-d8
 Concen: 53.953 ug/l
 RT: 10.32 min Scan# 1381
 Delta R.T. -0.00 min
 Lab File: VW011790.D
 Acq: 09 Aug 2019 01:30

Tgt Ion	Resp	Lower	Upper
98	434828		
98	100		
100	64.5	52.7	79.1

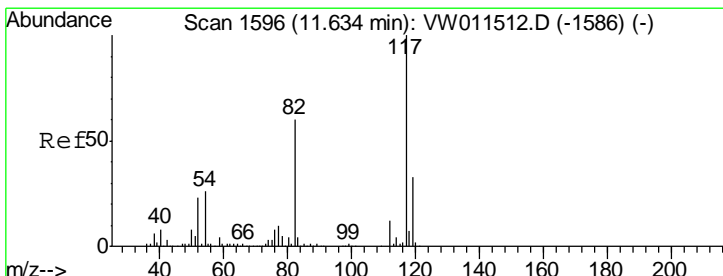
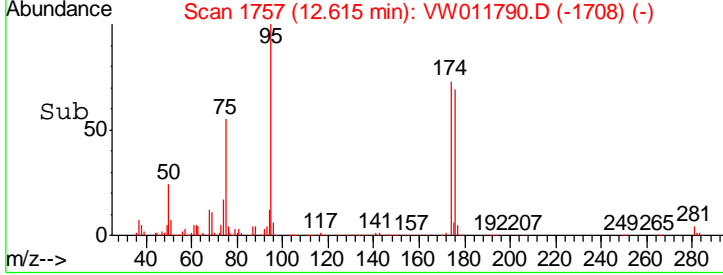
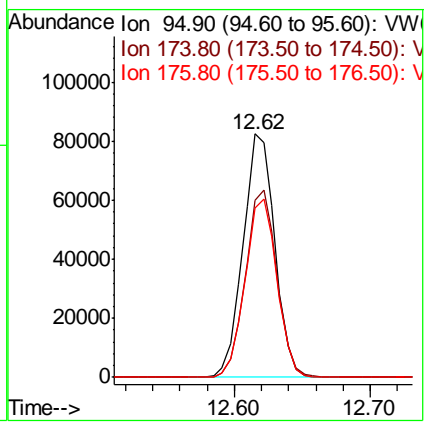
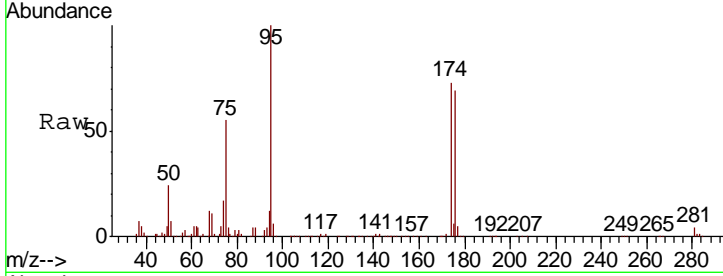




#62
 4-Bromofluorobenzene
 Concen: 46.815 ug/l
 RT: 12.62 min Scan# 1757
 Delta R.T. -0.00 min
 Lab File: VW011790.D
 Acq: 09 Aug 2019 01:30

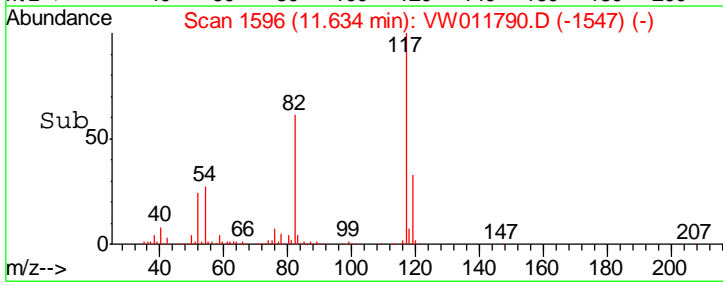
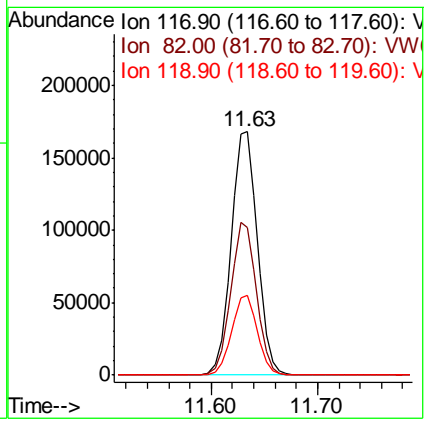
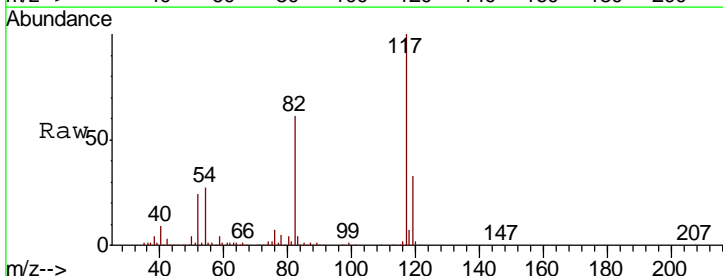
Instrument : MSVOA_W
 ClientSampled : 2S-F2-(1)

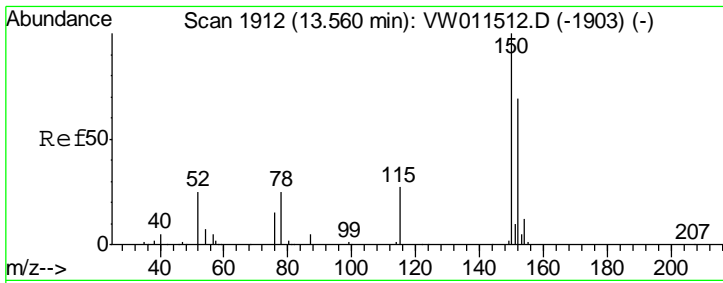
Tgt Ion	Resp	Lower	Upper
95	134517		
174	76.5	0.0	150.2
176	73.8	0.0	144.4



#63
 Chlorobenzene-d5
 Concen: 50.000 ug/l
 RT: 11.63 min Scan# 1596
 Delta R.T. -0.00 min
 Lab File: VW011790.D
 Acq: 09 Aug 2019 01:30

Tgt Ion	Resp	Lower	Upper
117	289985		
82	60.8	47.9	71.9
119	32.7	26.2	39.2

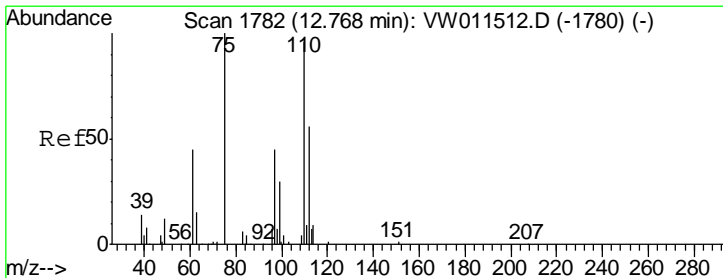
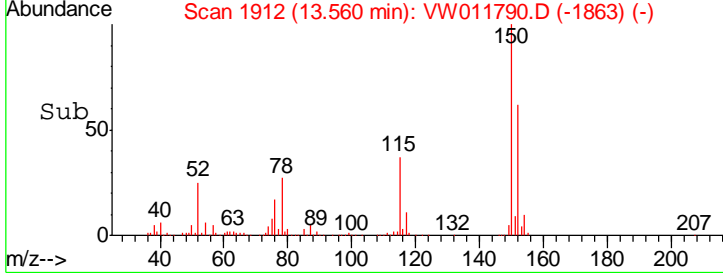
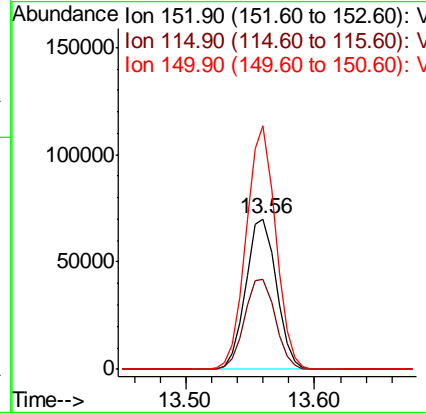
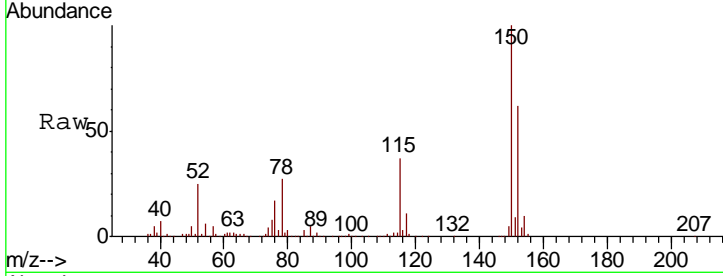




#72
 1,4-Dichlorobenzene-d4
 Concen: 50.000 ug/l
 RT: 13.56 min Scan# 1912
 Delta R.T. -0.00 min
 Lab File: VW011790.D
 Acq: 09 Aug 2019 01:30

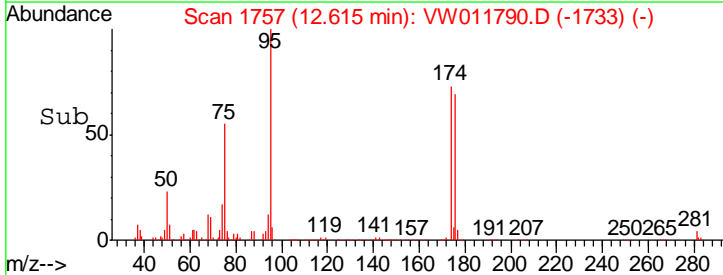
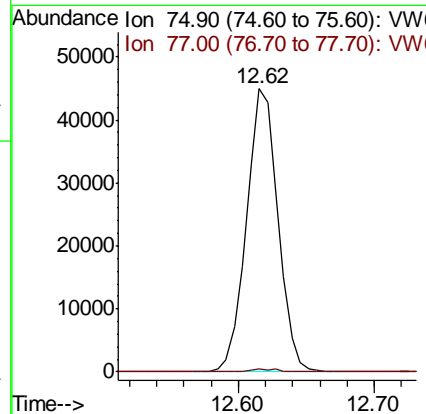
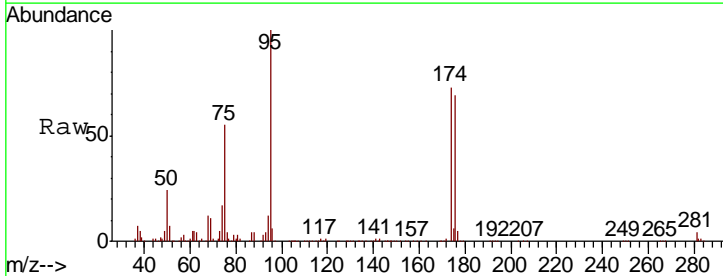
Instrument :
 MSVOA_W
 ClientSampled :
 2S-F2-(1)

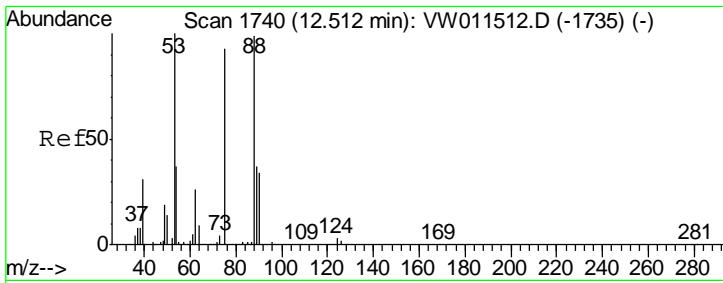
Tgt Ion	Resp	Lower	Upper
152	114951		
152	100		
115	60.6	30.5	91.5
150	155.9	0.0	352.6



#76
 1,2,3-Trichloropropane
 Concen: 59.673 ug/l
 RT: 12.62 min Scan# 1757
 Delta R.T. -0.15 min
 Lab File: VW011790.D
 Acq: 09 Aug 2019 01:30

Tgt Ion	Resp	Lower	Upper
75	72581		
75	100		
77	1.1	0.0	0.0#

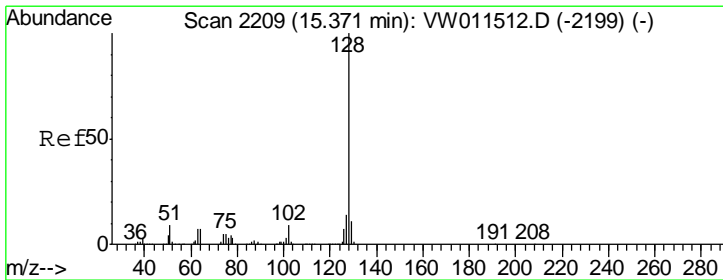
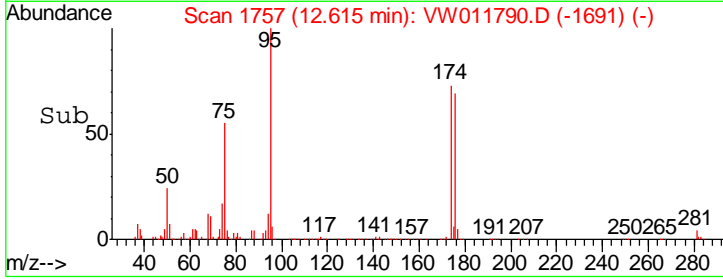
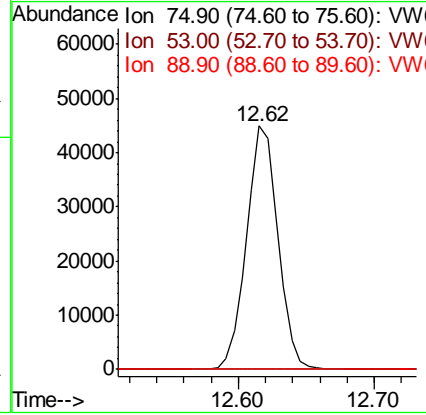
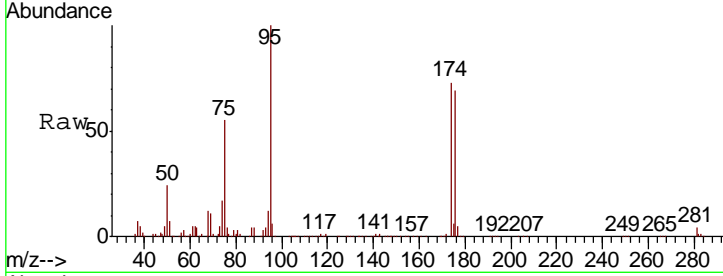




#81
 trans-1,4-Dichloro-2-butene
 Concen: 137.525 ug/l
 RT: 12.62 min Scan# 1757
 Delta R.T. 0.10 min
 Lab File: VW011790.D
 Acq: 09 Aug 2019 01:30

Instrument :
 MSVOA_W
 ClientSampled :
 2S-F2-(1)

Tgt Ion	Resp	Lower	Upper
75	100		
53	0.2	88.0	132.0#
89	0.0	35.3	52.9#



#95
 Naphthalene
 Concen: 2.132 ug/l
 RT: 15.37 min Scan# 2209
 Delta R.T. 0.00 min
 Lab File: VW011790.D
 Acq: 09 Aug 2019 01:30

Tgt Ion	Resp	Lower	Upper
128	100		
127	0.0	10.6	16.0#
129	0.0	8.6	13.0#

