

Data Path : Z:\VOASRV\HPCHEM1\MSVOA W\DATA\VW081020\
 Data File : VW016116.D
 Acq On : 10 Aug 2020 21:53
 Operator : SY/VA
 Sample : L3598-07MS
 Misc : 5.53G/10ML/MSVOA W/SOIL
 ALS Vial : 1 Sample Multiplier: 1

Instrument :
 MSVOA_W
 ClientSampleId :

Quant Time: Aug 11 02:00:10 2020
 Quant Method : Z:\VOASRV\HPCHEM1\MSVOA_W\METHOD\SOM2WLM081020S.M
 Quant Title : VOC Analysis
 QLast Update : Tue Aug 11 01:19:31 2020
 Response via : Initial Calibration

Internal Standards	R.T.	QIon	Response	Conc	Units	Dev(Min)
1) 1,4-Difluorobenzene	8.85	114	312791	25.00	ug/L	0.00
28) Chlorobenzene-d5	11.63	117	252809	25.00	ug/L	0.00
60) 1,4-Dichlorobenzene-d4	13.56	152	69432	25.00	ug/L	0.00

System Monitoring Compounds

4) Vinyl Chloride-d3	2.36	65	111052	28.64	ug/L	0.00
Spiked Amount	25.000	Range	30 - 150	Recovery	=	114.56%
7) Chloroethane-d5	2.89	69	80747	27.43	ug/L	0.00
Spiked Amount	25.000	Range	30 - 150	Recovery	=	109.72%
10) 1,1-Dichloroethene-d2	4.01	63	211302	25.65	ug/L	0.00
Spiked Amount	25.000	Range	45 - 110	Recovery	=	102.60%
20) 2-Butanone-d5	7.09	46	81808	80.17	ug/L	0.00
Spiked Amount	50.000	Range	20 - 135	Recovery	=	160.34%#
24) Chloroform-d	7.65	84	228653	27.24	ug/L	0.00
Spiked Amount	25.000	Range	40 - 150	Recovery	=	108.96%
26) 1,2-Dichloroethane-d4	8.31	65	141649	31.77	ug/L	0.00
Spiked Amount	25.000	Range	70 - 130	Recovery	=	127.08%
29) Benzene-d6	8.27	84	426206	30.99	ug/L	0.00
Spiked Amount	25.000	Range	20 - 135	Recovery	=	123.96%
33) 1,2-Dichloropropane-d6	9.27	67	131026	32.40	ug/L	0.00
Spiked Amount	25.000	Range	70 - 120	Recovery	=	129.60%#
37) Toluene-d8	10.32	98	344666	27.33	ug/L	0.00
Spiked Amount	25.000	Range	30 - 130	Recovery	=	109.32%
38) trans-1,3-Dichloropropene-	10.58	79	58629	32.26	ug/L	0.00
Spiked Amount	25.000	Range	30 - 135	Recovery	=	129.04%
39) 2-Hexanone-d5	10.93	63	64202	92.02	ug/L	0.00
Spiked Amount	50.000	Range	20 - 135	Recovery	=	184.04%#
48) 1,1,2,2-Tetrachloroethane-	12.69	84	115639	35.12	ug/L	0.00
Spiked Amount	25.000	Range	45 - 120	Recovery	=	140.48%#
61) 1,2-Dichlorobenzene-d4	13.86	152	67642	27.48	ug/L	0.00
Spiked Amount	25.000	Range	75 - 120	Recovery	=	109.92%

Target Compounds

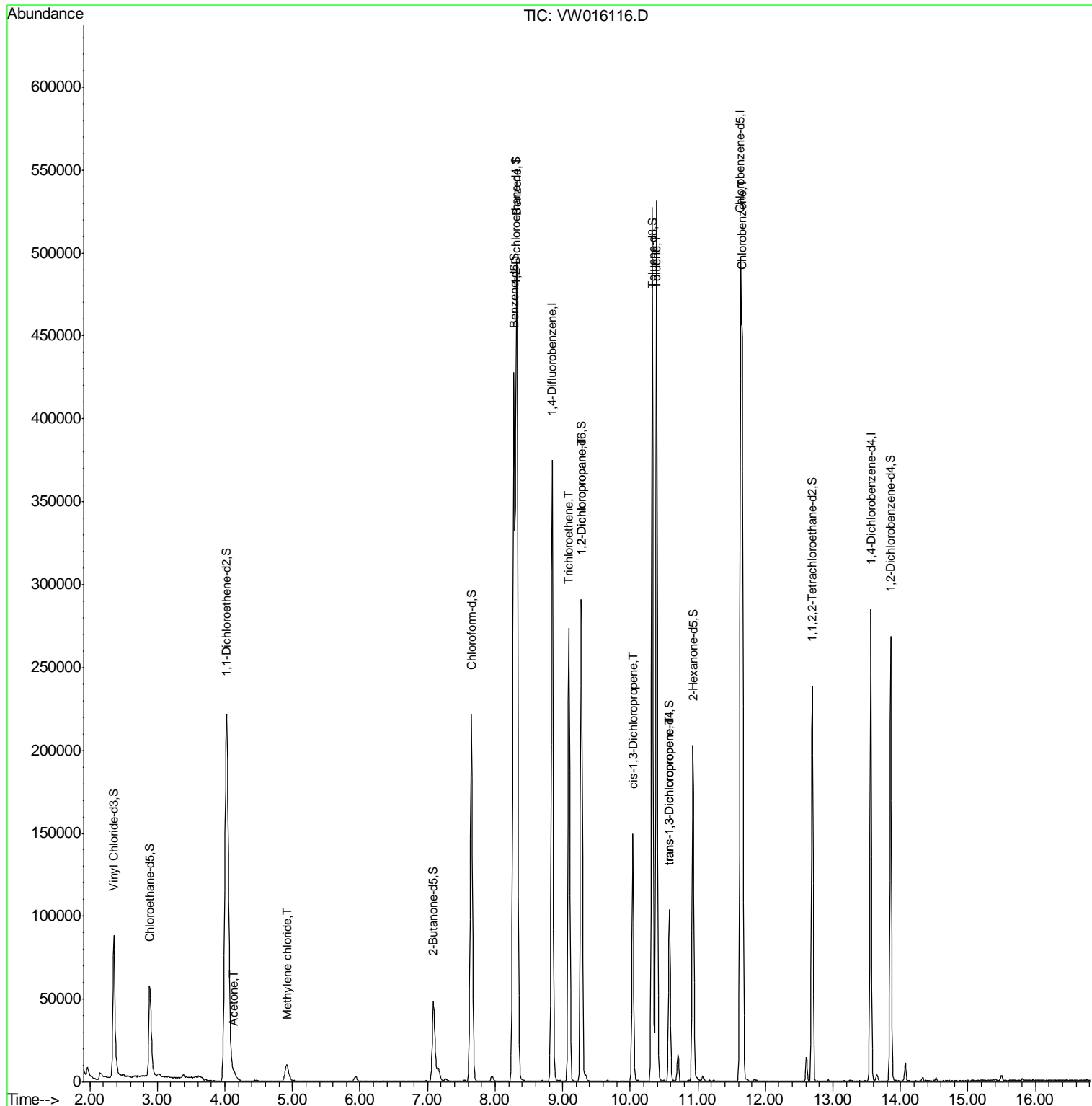
Target Compounds	R.T.	QIon	Response	Conc	Units	Ovalue
13) Acetone	4.14	43	6691	8.668	ug/L	99
16) Methylene chloride	4.92	84	9662	1.956	ug/L	94
34) Benzene	8.32	78	401753	27.558	ug/L	100
35) Trichloroethene	9.09	95	94462	24.097	ug/L	99
40) 1,2-Dichloropropane	9.27	63	15126	4.225	ug/L #	85
42) cis-1,3-Dichloropropene	10.04	75	3960	0.726	ug/L #	52
44) Toluene	10.39	91	384131	24.961	ug/L	97
45) trans-1,3-Dichloropropene	10.57	75	2633	0.538	ug/L	85
52) Chlorobenzene	11.66	112	224573	22.055	ug/L	98

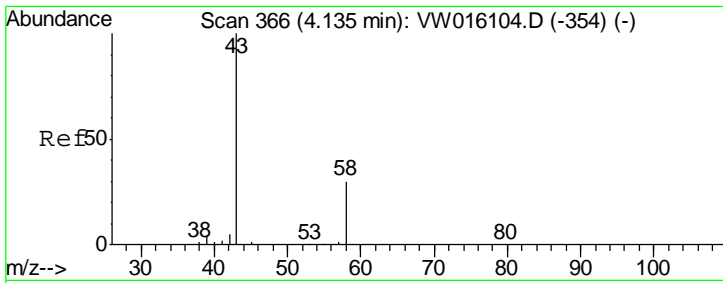
(#) = qualifier out of range (m) = manual integration (+) = signals summed

Data Path : Z:\VOASRV\HPCHEM1\MSVOA W\DATA\VW081020\
 Data File : VW016116.D
 Acq On : 10 Aug 2020 21:53
 Operator : SY/VA
 Sample : L3598-07MS
 Misc : 5.53G/10ML/MSVOA W/SOIL
 ALS Vial : 1 Sample Multiplier: 1

Instrument :
 MSVOA_W
 ClientSampled :

Quant Time: Aug 11 02:00:10 2020
 Quant Method : Z:\VOASRV\HPCHEM1\MSVOA_W\METHOD\SOM2WLM081020S.M
 Quant Title : VOC Analysis
 QLast Update : Tue Aug 11 01:19:31 2020
 Response via : Initial Calibration

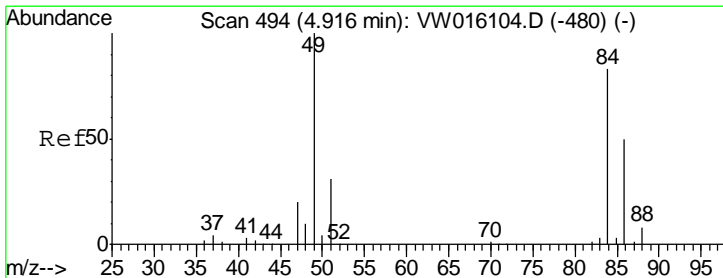
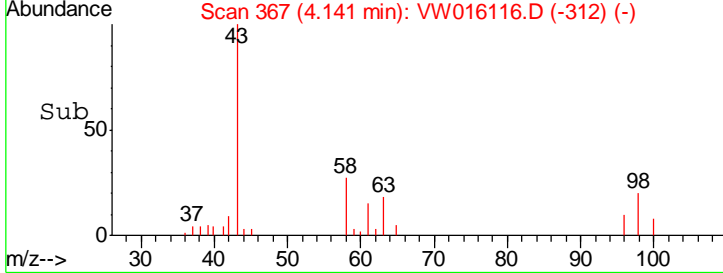
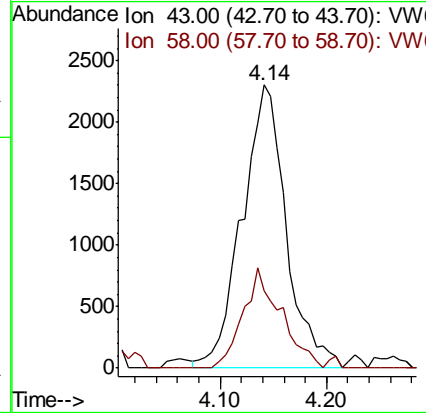
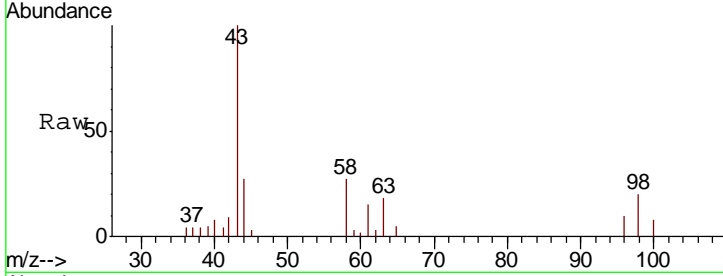




#13
 Acetone
 Concen: 8.668 ug/L
 RT: 4.14 min Scan# 367
 Delta R.T. 0.01 min
 Lab File: VW016116.D
 Acq: 10 Aug 2020 21:53

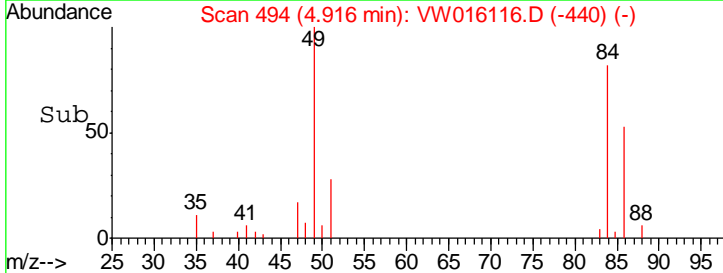
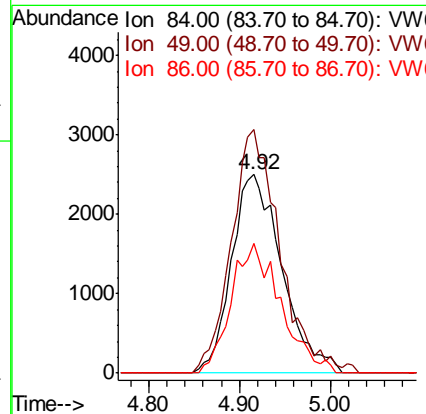
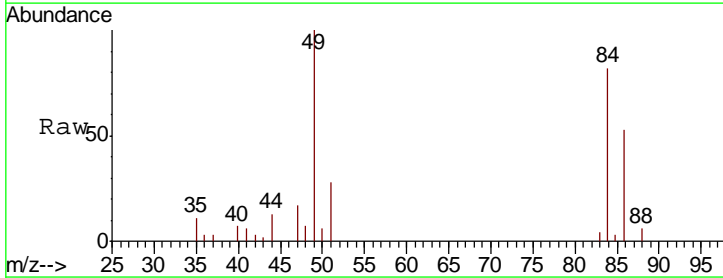
Instrument :
 MSVOA_W
 ClientSampled :

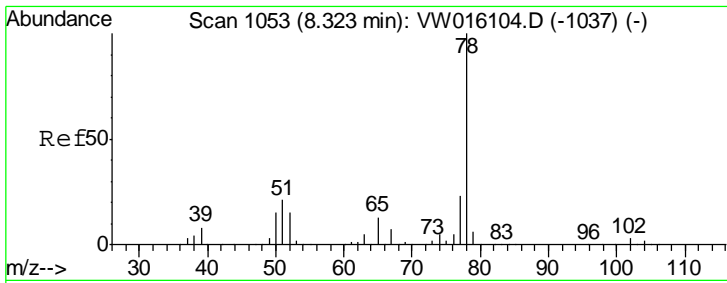
Tgt Ion	Resp	Lower	Upper
43	100		
58	30.3	0.0	59.4



#16
 Methylene chloride
 Concen: 1.956 ug/L
 RT: 4.92 min Scan# 494
 Delta R.T. -0.00 min
 Lab File: VW016116.D
 Acq: 10 Aug 2020 21:53

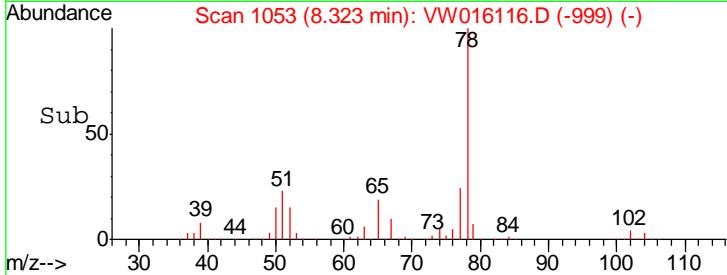
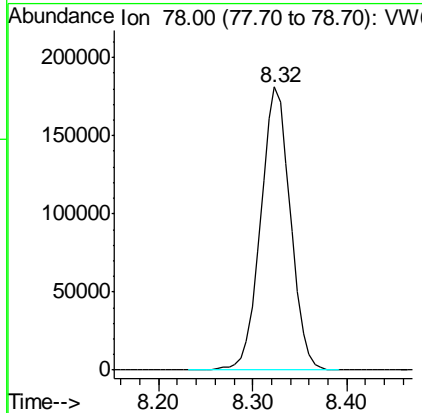
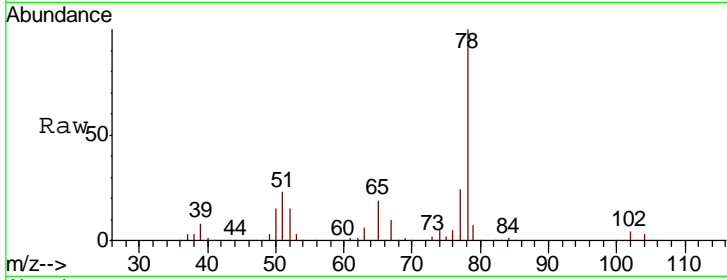
Tgt Ion	Resp	Lower	Upper
84	100		
49	122.5	80.4	149.4
86	65.4	43.8	81.3





#34
 Benzene
 Concen: 27.558 ug/L
 RT: 8.32 min Scan# 1053
 Delta R.T. -0.00 min
 Lab File: VW016116.D
 Acq: 10 Aug 2020 21:53
 Tgt Ion: 78 Resp: 401753

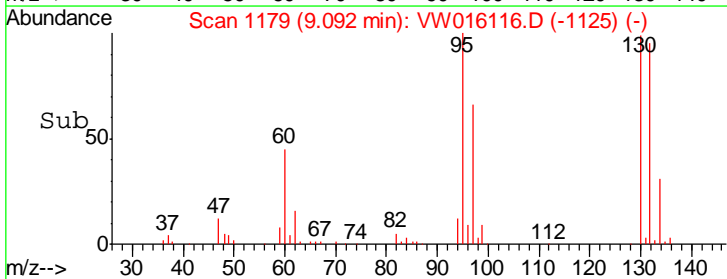
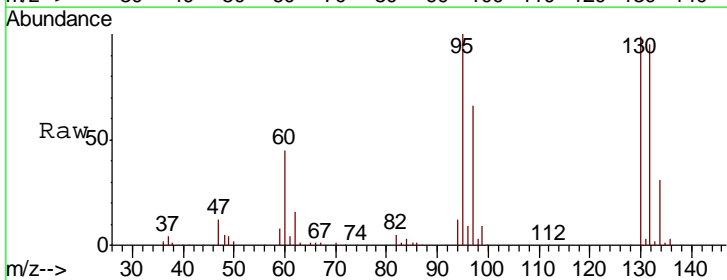
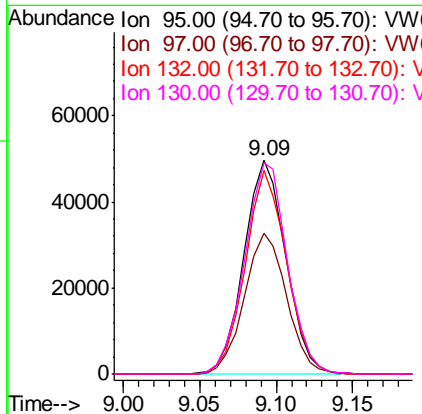
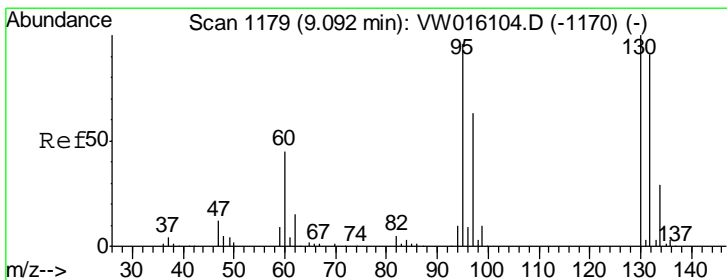
Instrument :
 MSVOA_W
 ClientSampled :

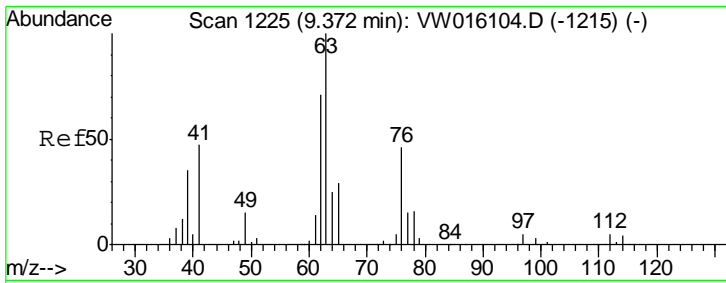


#35
 Trichloroethene
 Concen: 24.097 ug/L
 RT: 9.09 min Scan# 1179
 Delta R.T. -0.00 min
 Lab File: VW016116.D
 Acq: 10 Aug 2020 21:53

Tgt Ion: 95 Resp: 94462

Ion	Ratio	Lower	Upper
95	100		
97	66.5	44.9	83.3
132	93.8	65.8	122.2
130	100.9	69.5	129.1

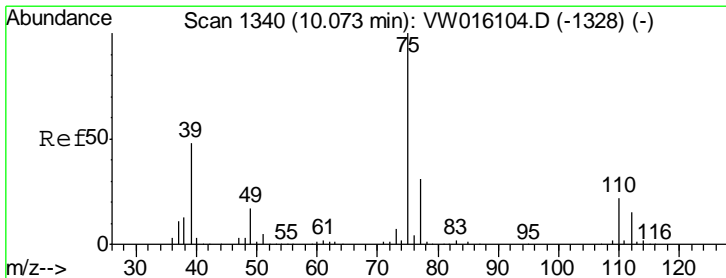
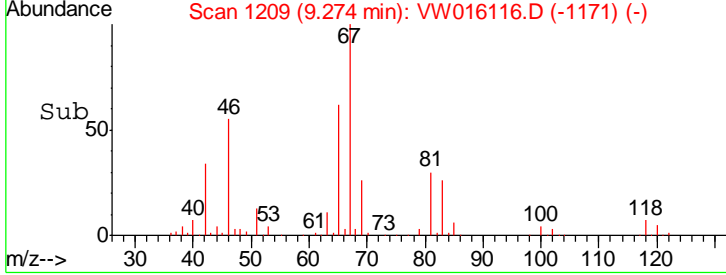
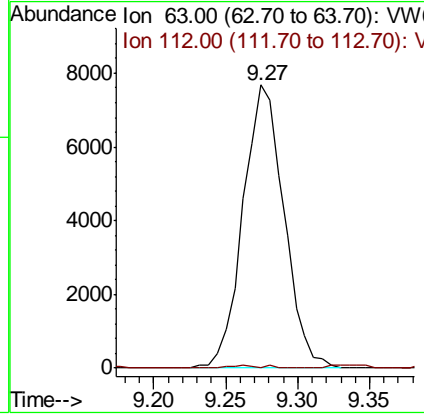
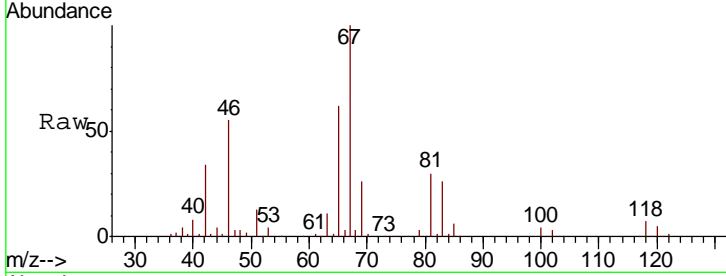




#40
 1,2-Dichloropropane
 Concen: 4.225 ug/L
 RT: 9.27 min Scan# 1209
 Delta R.T. -0.10 min
 Lab File: VW016116.D
 Acq: 10 Aug 2020 21:53

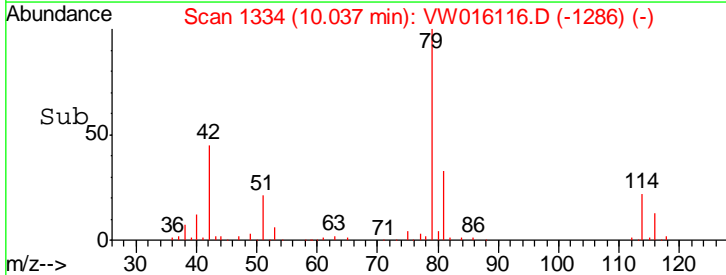
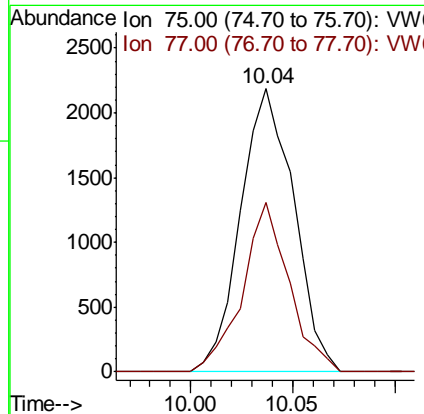
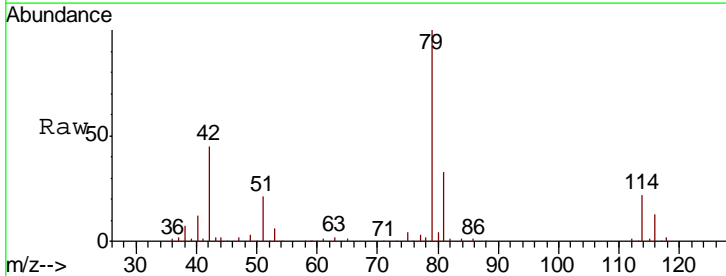
Instrument : MSVOA_W
 ClientSampled :

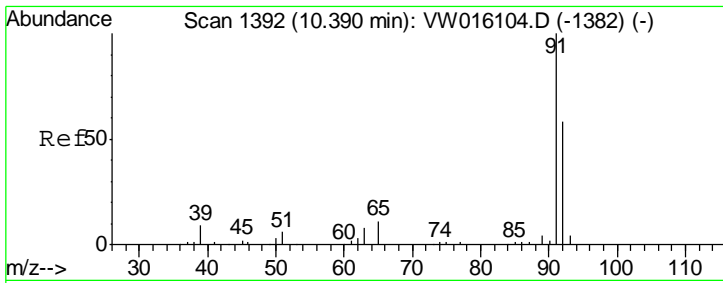
Tgt Ion	Resp	Lower	Upper
63	15126		
112	0.2	4.0	6.0#



#42
 cis-1,3-Dichloropropene
 Concen: 0.726 ug/L
 RT: 10.04 min Scan# 1334
 Delta R.T. -0.04 min
 Lab File: VW016116.D
 Acq: 10 Aug 2020 21:53

Tgt Ion	Resp	Lower	Upper
75	3960		
77	59.9	22.9	42.5#

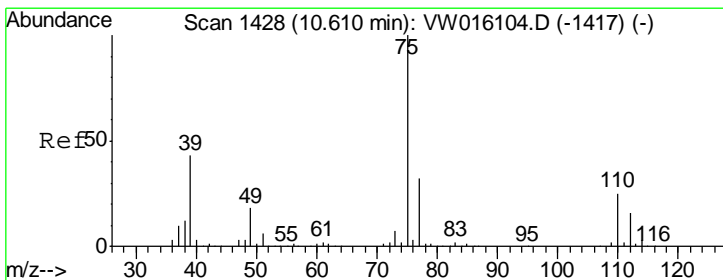
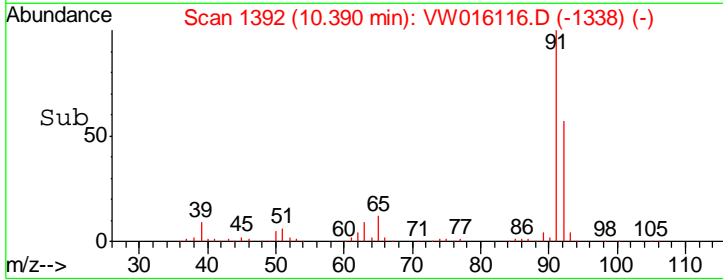
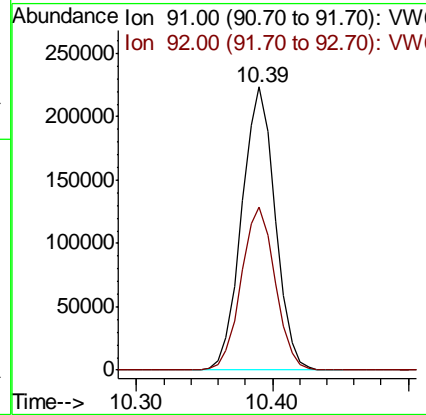
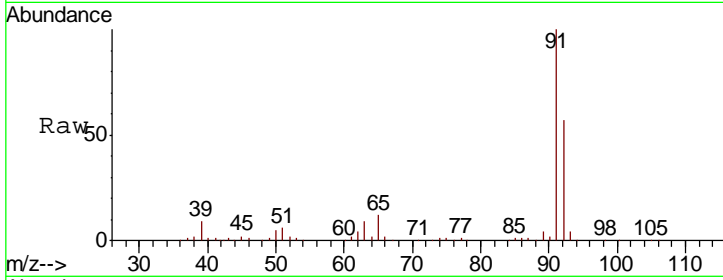




#44
 Toluene
 Concen: 24.961 ug/L
 RT: 10.39 min Scan# 1392
 Delta R.T. -0.00 min
 Lab File: VW016116.D
 Acq: 10 Aug 2020 21:53

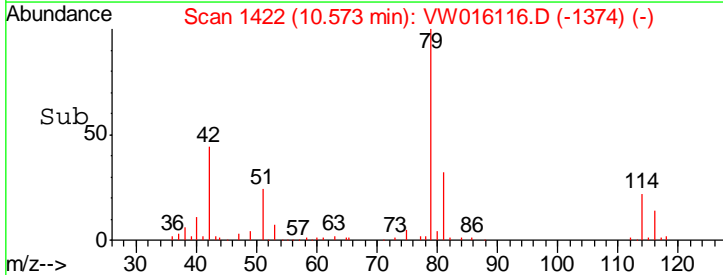
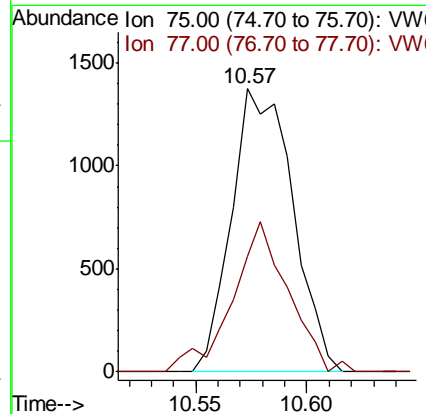
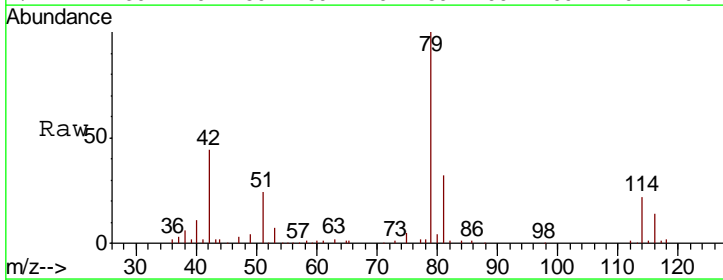
Instrument : MSVOA_W
 ClientSampled :

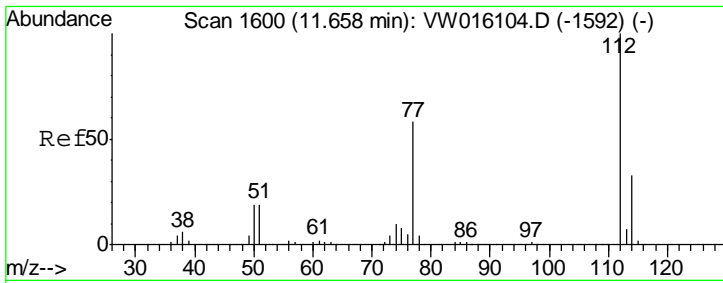
Tgt Ion: 91 Resp: 384131
 Ion Ratio Lower Upper
 91 100
 92 57.4 41.8 77.6



#45
 trans-1,3-Dichloropropene
 Concen: 0.538 ug/L
 RT: 10.57 min Scan# 1422
 Delta R.T. -0.04 min
 Lab File: VW016116.D
 Acq: 10 Aug 2020 21:53

Tgt Ion: 75 Resp: 2633
 Ion Ratio Lower Upper
 75 100
 77 40.7 22.7 42.1





#52
 Chlorobenzene
 Concen: 22.055 ug/L
 RT: 11.66 min Scan# 1600
 Delta R.T. -0.00 min
 Lab File: VW016116.D
 Acq: 10 Aug 2020 21:53

Instrument :
 MSVOA_W
 ClientSampled :

Tot Ion: 112 Resp: 224573

Ion	Ratio	Lower	Upper
112	100		
77	59.9	49.1	73.7
114	31.9	23.5	43.7

