

Data Path : Z:\VOASRV\HPCHEM1\MSVOA W\DATA\VW082120\  
 Data File : VW016290.D  
 Acq On : 21 Aug 2020 04:08  
 Operator : SY/VA  
 Sample : L3720-04  
 Misc : 6.64G/5ML/MSVOA W/SOIL  
 ALS Vial : 28 Sample Multiplier: 1

Instrument :  
 MSVOA\_W  
 ClientSampleId :  
 MP-081920-B11-0-2-GRAB

Quant Time: Aug 21 04:40:17 2020  
 Quant Method : Z:\VOASRV\HPCHEM1\MSVOA\_W\METHOD\82W081420S.M  
 Quant Title : SW846 8260  
 QLast Update : Mon Aug 17 08:01:41 2020  
 Response via : Initial Calibration

Internal Standards	R.T.	QIon	Response	Conc	Units	Dev(Min)
1) Pentafluorobenzene	7.95	168	216058	50.00	ug/l	0.00
34) 1,4-Difluorobenzene	8.84	114	394930	50.00	ug/l	0.00
63) Chlorobenzene-d5	11.63	117	376083	50.00	ug/l	0.00
72) 1,4-Dichlorobenzene-d4	13.56	152	146973	50.00	ug/l	0.00

## System Monitoring Compounds

33) 1,2-Dichloroethane-d4	8.31	65	111743	53.03	ug/l	0.00
Spiked Amount				50.000		
			Recovery	=	106.06%	
35) Dibromofluoromethane	7.88	113	119689	49.12	ug/l	0.00
Spiked Amount				50.000		
			Recovery	=	98.24%	
50) Toluene-d8	10.32	98	496417	52.63	ug/l	0.00
Spiked Amount				50.000		
			Recovery	=	105.26%	
62) 4-Bromofluorobenzene	12.62	95	169400	50.24	ug/l	0.00
Spiked Amount				50.000		
			Recovery	=	100.48%	

## Target Compounds

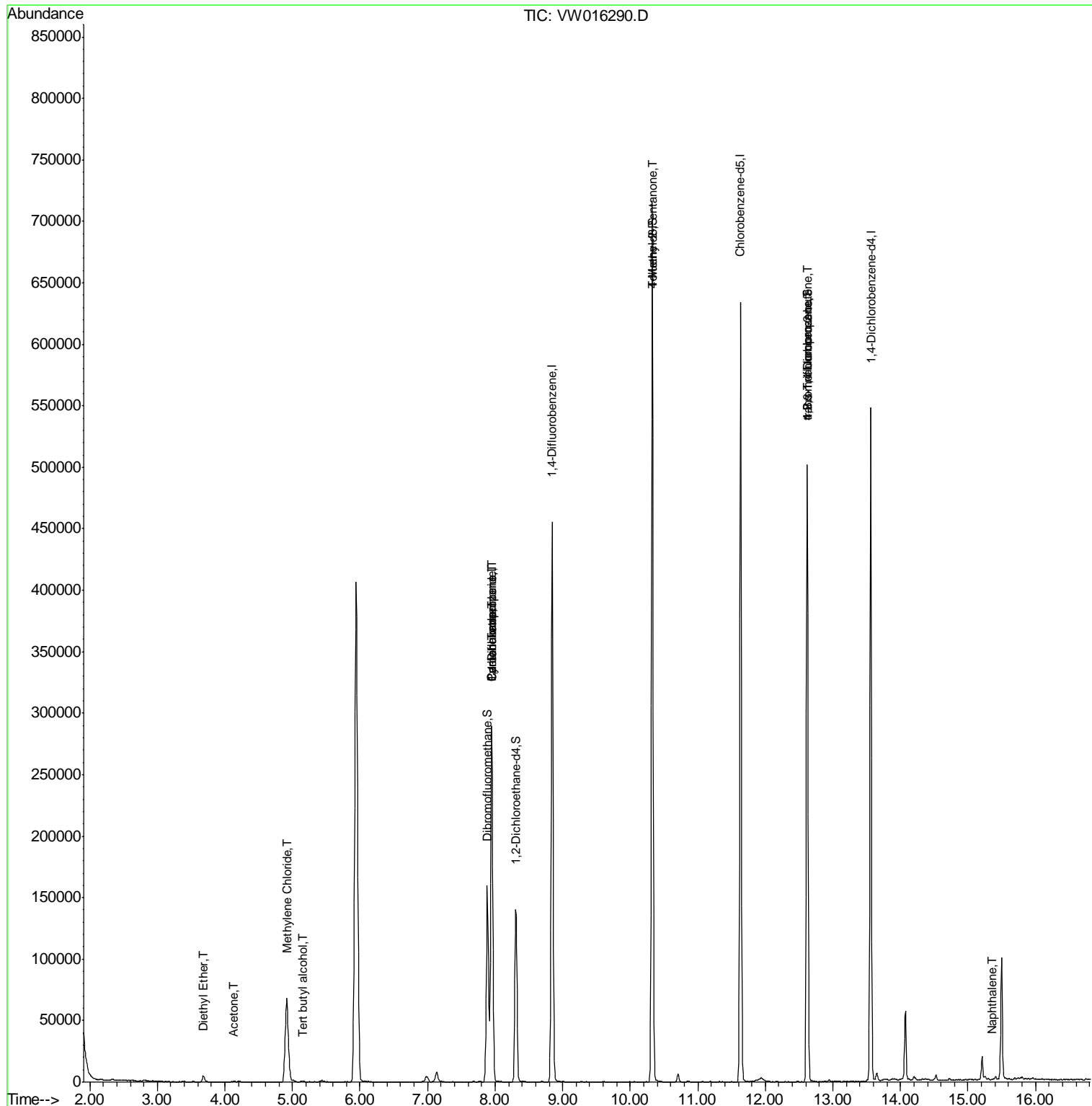
						Qvalue
8) Diethyl Ether	3.68	74	2853	2.565	ug/l	94
11) Tert butyl alcohol	5.16	59	549	4.896	ug/l #	70
16) Acetone	4.14	43	1024	2.537	ug/l	93
20) Methylene Chloride	4.92	84	58342	20.337	ug/l	93
31) Cyclohexane	7.95	56	4604	1.197	ug/l #	1
36) 1,1-Dichloropropene	7.95	75	16412	4.218	ug/l #	49
38) Carbon Tetrachloride	7.95	117	21619	5.568	ug/l #	17
51) 4-Methyl-2-Pentanone	10.33	43	1744	1.374	ug/l #	1
76) 1,2,3-Trichloropropane	12.62	75	79630	58.912	ug/l #	1
81) trans-1,4-Dichloro-2-buten	12.62	75	79630	141.309	ug/l #	12
95) Naphthalene	15.36	128	1065	3.760	ug/l #	81

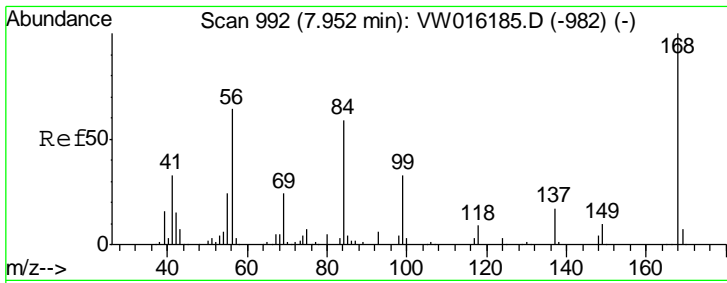
(#) = qualifier out of range (m) = manual integration (+) = signals summed

Data Path : Z:\VOASRV\HPCHEM1\MSVOA W\DATA\VW082120\  
 Data File : VW016290.D  
 Acq On : 21 Aug 2020 04:08  
 Operator : SY/VA  
 Sample : L3720-04  
 Misc : 6.64G/5ML/MSVOA W/SOIL  
 ALS Vial : 28 Sample Multiplier: 1

**Instrument :**  
 MSVOA\_W  
**Client Sampled :**  
 MP-081920-B11-0-2-GRAB

Quant Time: Aug 21 04:40:17 2020  
 Quant Method : Z:\VOASRV\HPCHEM1\MSVOA\_W\METHOD\82W081420S.M  
 Quant Title : SW846 8260  
 QLast Update : Mon Aug 17 08:01:41 2020  
 Response via : Initial Calibration

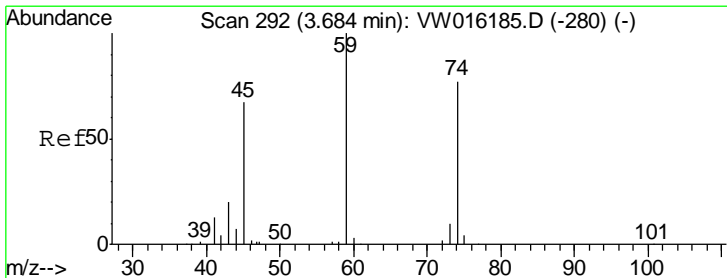
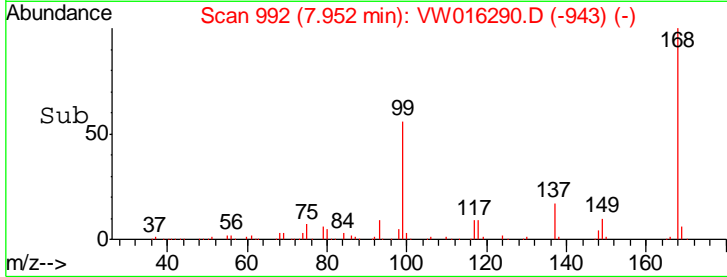
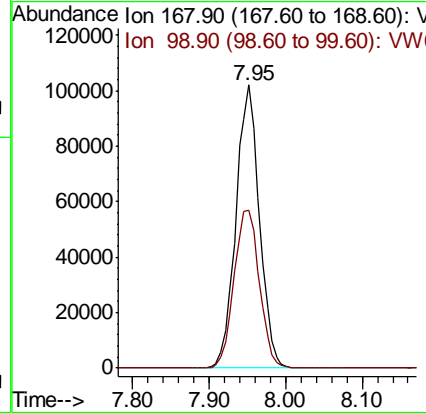
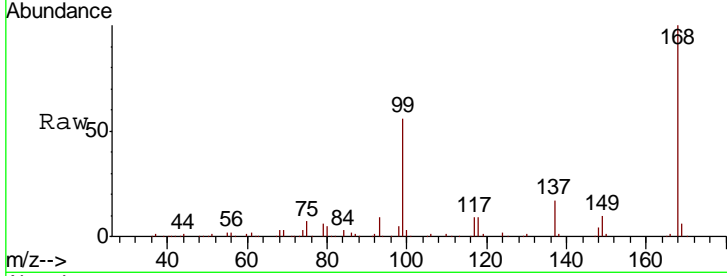




#1  
 Pentafluorobenzene  
 Concen: 50.000 ug/l  
 RT: 7.95 min Scan# 992  
 Delta R.T. 0.00 min  
 Lab File: VW016290.D  
 Acq: 21 Aug 2020 04:08

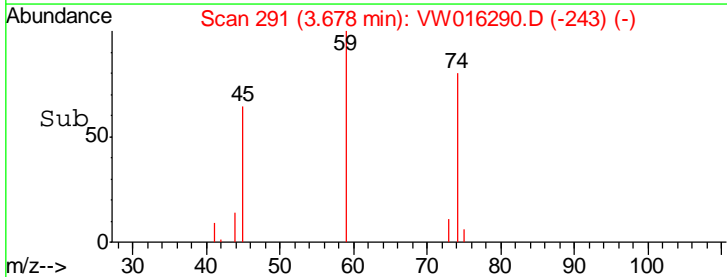
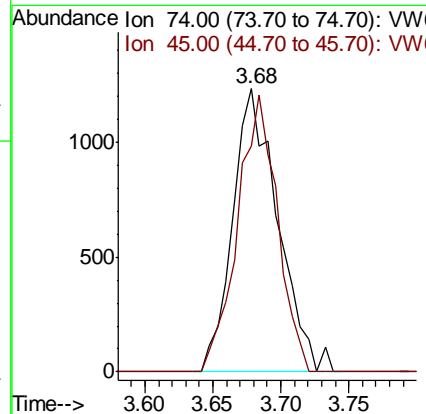
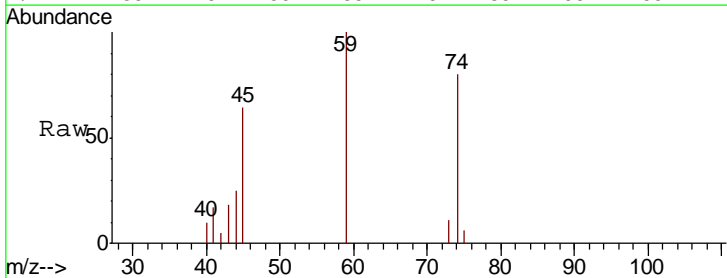
**Instrument :**  
 MSVOA\_W  
**ClientSampleId :**  
 MP-081920-B11-0-2-GRAB

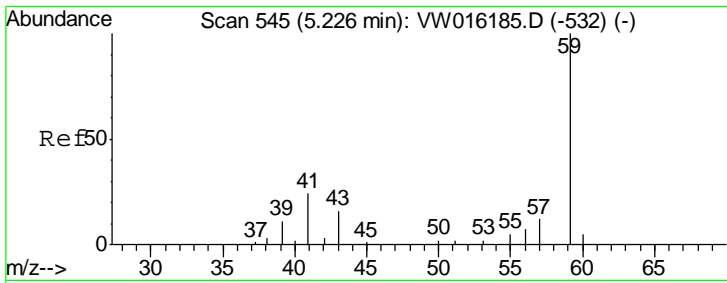
Tgt Ion: 168 Resp: 216058  
 Ion Ratio Lower Upper  
 168 100  
 99 55.9 48.3 72.5



#8  
 Diethyl Ether  
 Concen: 2.565 ug/l  
 RT: 3.68 min Scan# 291  
 Delta R.T. -0.01 min  
 Lab File: VW016290.D  
 Acq: 21 Aug 2020 04:08

Tgt Ion: 74 Resp: 2853  
 Ion Ratio Lower Upper  
 74 100  
 45 86.5 45.9 137.7

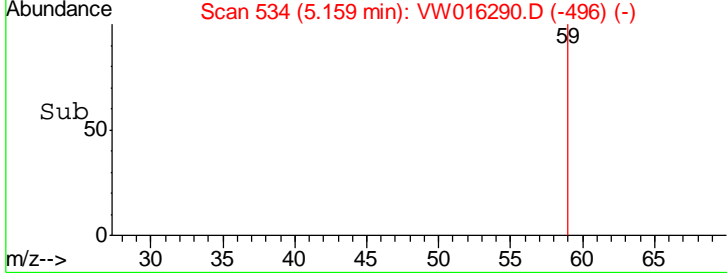
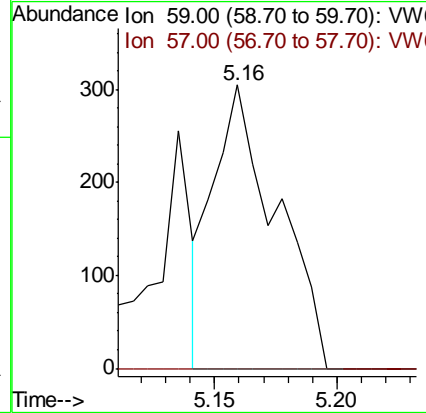
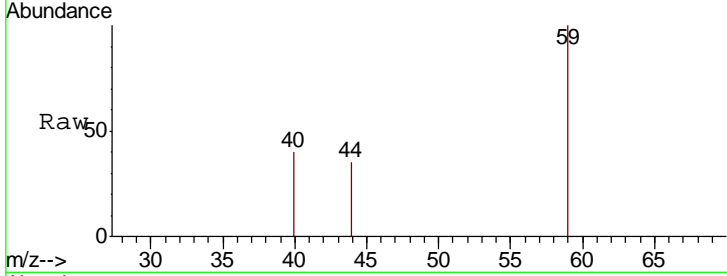




#11  
 Tert butyl alcohol  
 Concen: 4.896 ug/l  
 RT: 5.16 min Scan# 534  
 Delta R.T. -0.07 min  
 Lab File: VW016290.D  
 Acq: 21 Aug 2020 04:08

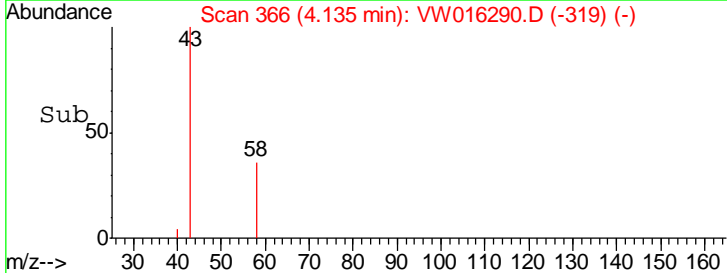
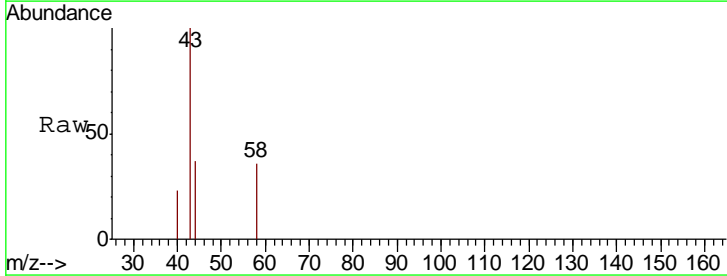
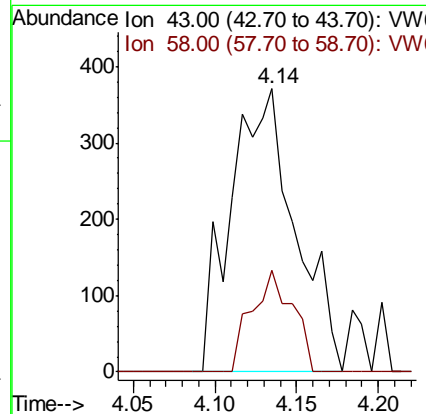
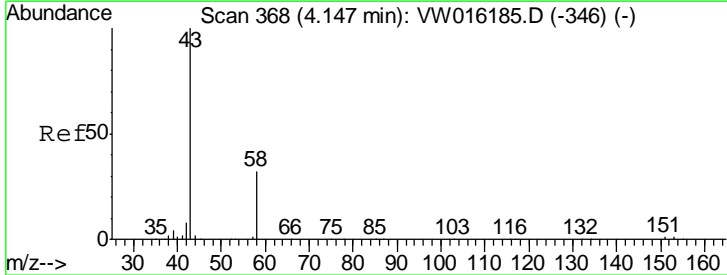
**Instrument :**  
 MSVOA\_W  
**ClientSampled :**  
 MP-081920-B11-0-2-GRAB

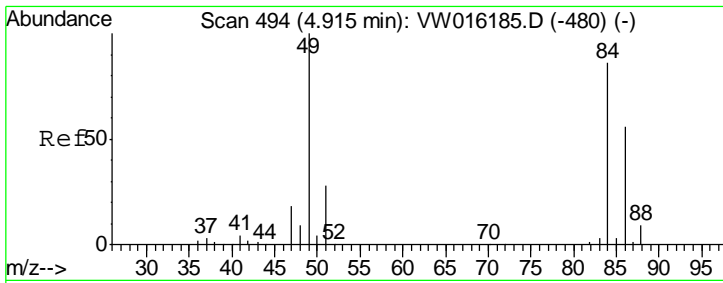
Tgt Ion	Resp	Lower	Upper
59	100		
57	0.0	9.0	13.6#



#16  
 Acetone  
 Concen: 2.537 ug/l  
 RT: 4.14 min Scan# 366  
 Delta R.T. -0.01 min  
 Lab File: VW016290.D  
 Acq: 21 Aug 2020 04:08

Tgt Ion	Resp	Lower	Upper
43	100		
58	36.1	25.8	38.6

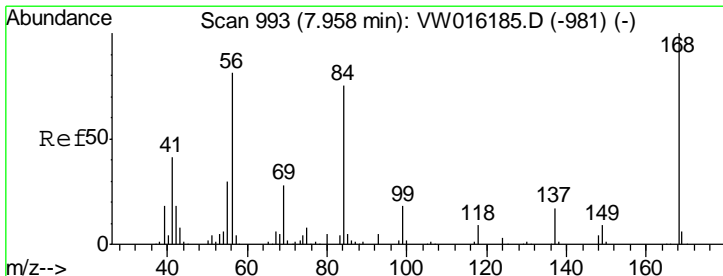
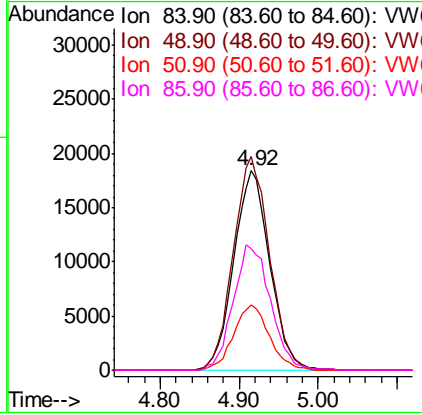
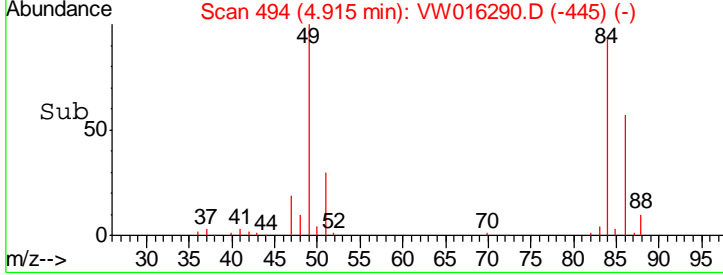
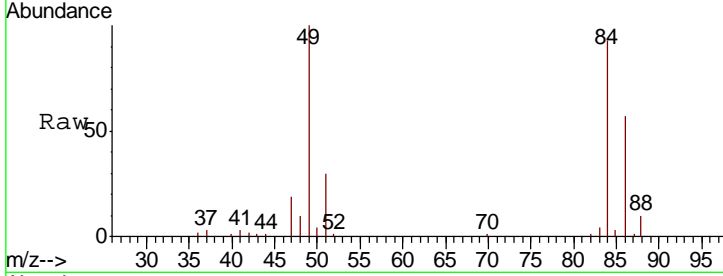




#20  
 Methylene Chloride  
 Concen: 20.337 ug/l  
 RT: 4.92 min Scan# 494  
 Delta R.T. 0.00 min  
 Lab File: VW016290.D  
 Acq: 21 Aug 2020 04:08

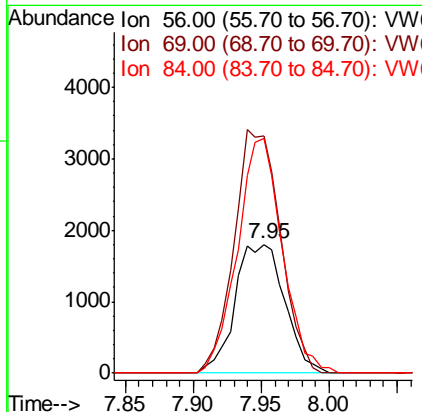
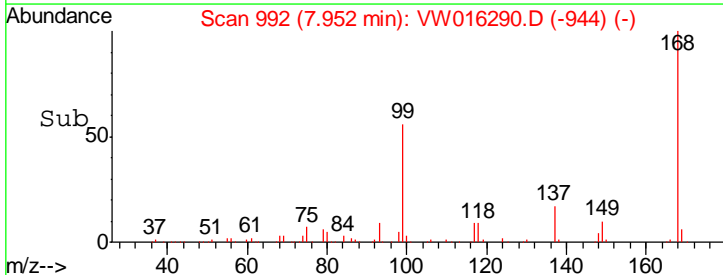
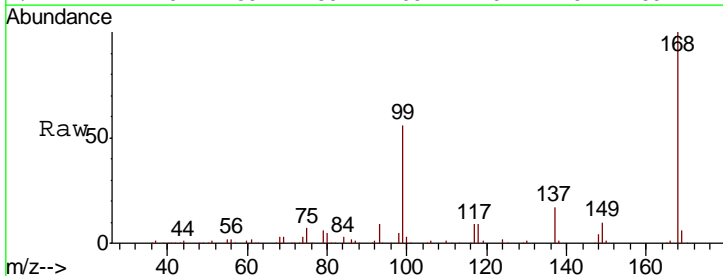
**Instrument :**  
 MSVOA\_W  
**ClientSampled :**  
 MP-081920-B11-0-2-GRAB

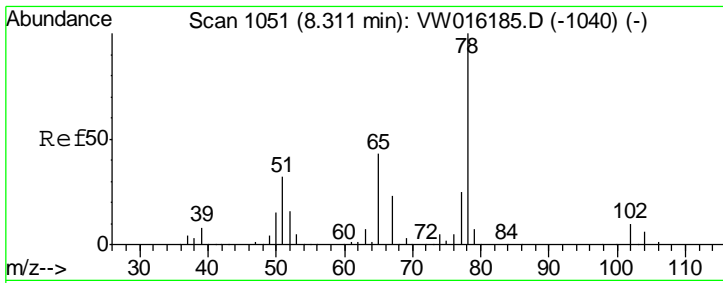
Tgt Ion	Resp	Lower	Upper
84	100		
49	107.2	93.4	140.2
51	32.6	26.6	40.0
86	60.9	52.2	78.2



#31  
 Cyclohexane  
 Concen: 1.197 ug/l  
 RT: 7.95 min Scan# 992  
 Delta R.T. -0.01 min  
 Lab File: VW016290.D  
 Acq: 21 Aug 2020 04:08

Tgt Ion	Resp	Lower	Upper
56	100		
69	184.9	27.3	40.9#
84	183.0	73.5	110.3#

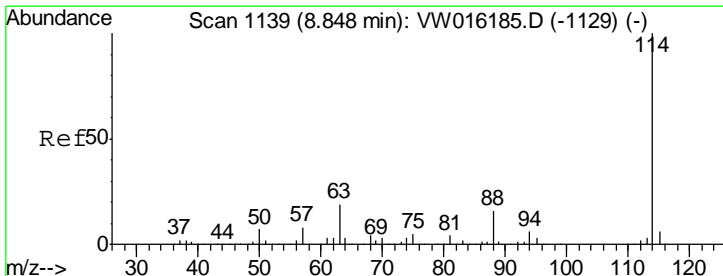
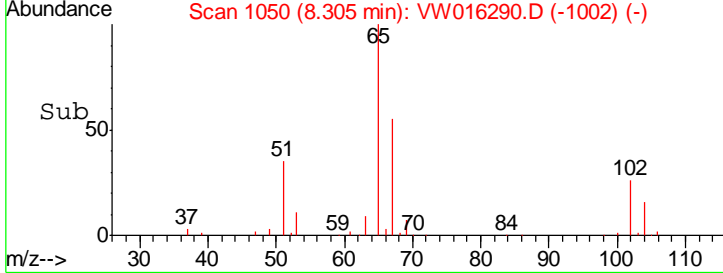
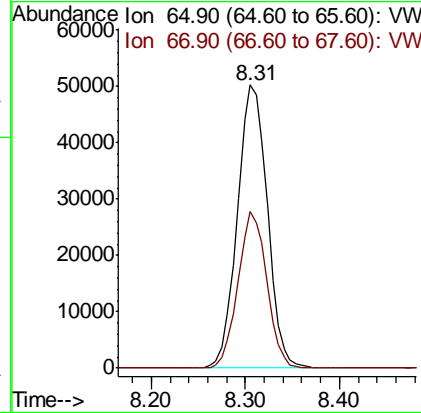
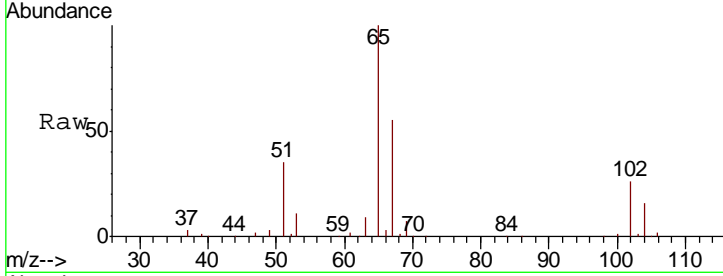




#33  
 1,2-Dichloroethane-d4  
 Concen: 53.034 ug/l  
 RT: 8.31 min Scan# 1050  
 Delta R.T. -0.01 min  
 Lab File: VW016290.D  
 Acq: 21 Aug 2020 04:08

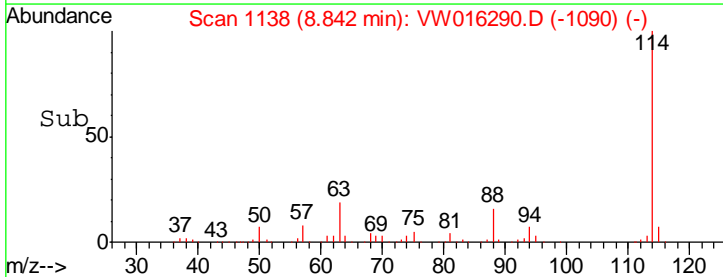
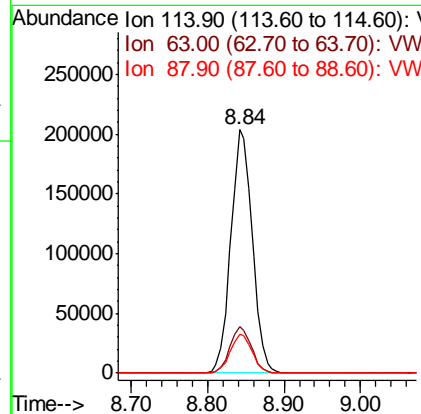
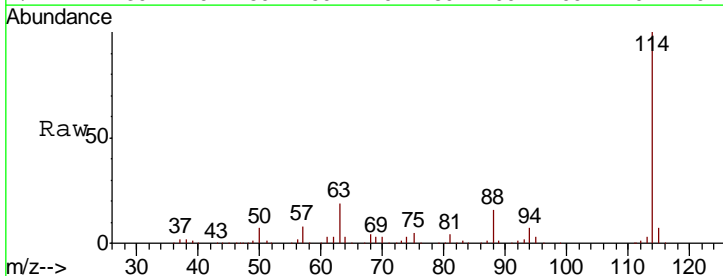
**Instrument :**  
 MSVOA\_W  
**ClientSampled :**  
 MP-081920-B11-0-2-GRAB

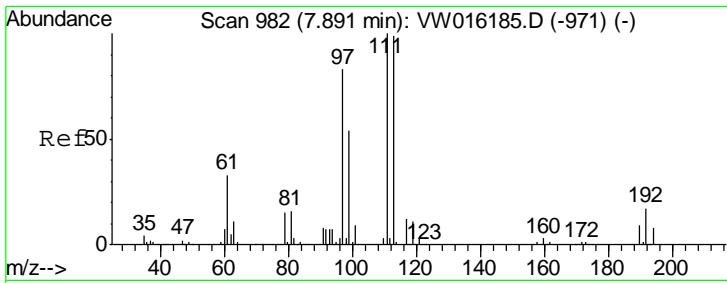
Tgt Ion	Resp	Lower	Upper
65	111743		
67	53.2	0.0	105.6



#34  
 1,4-Difluorobenzene  
 Concen: 50.000 ug/l  
 RT: 8.84 min Scan# 1138  
 Delta R.T. -0.01 min  
 Lab File: VW016290.D  
 Acq: 21 Aug 2020 04:08

Tgt Ion	Resp	Lower	Upper
114	394930		
63	19.3	0.0	38.4
88	16.1	0.0	32.8

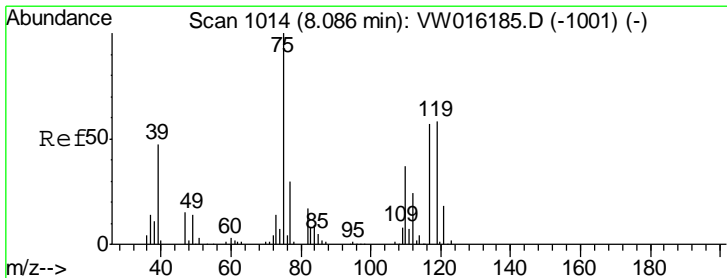
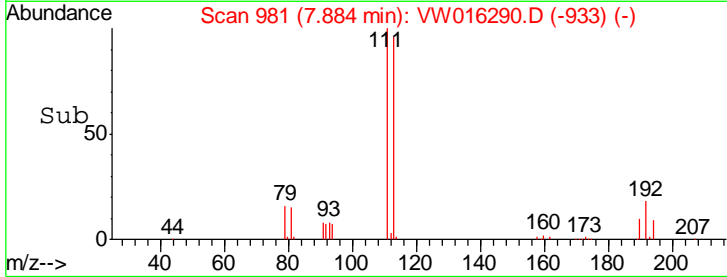
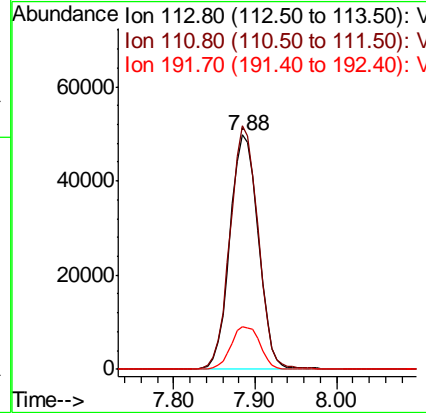
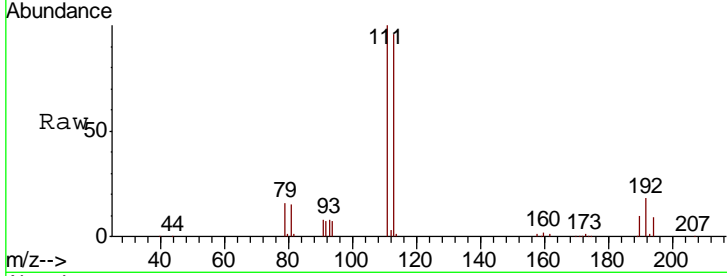




#35  
 Dibromofluoromethane  
 Concen: 49.118 ug/l  
 RT: 7.88 min Scan# 981  
 Delta R.T. -0.01 min  
 Lab File: VW016290.D  
 Acq: 21 Aug 2020 04:08

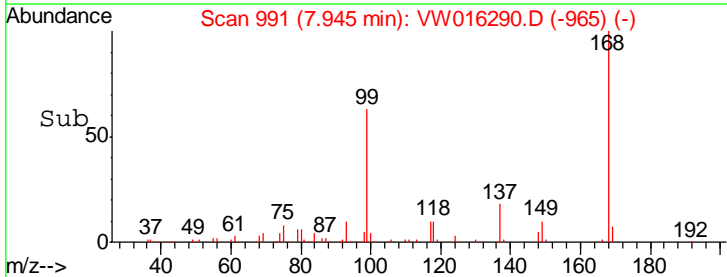
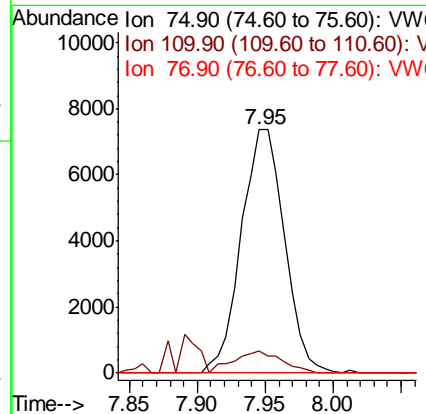
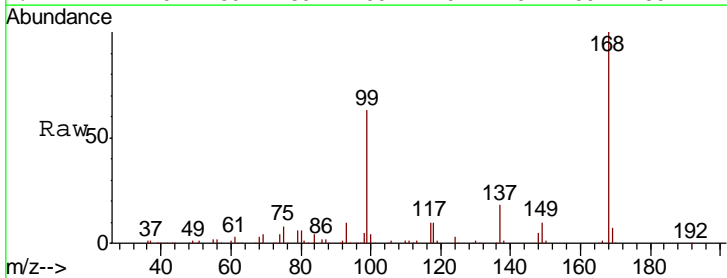
Instrument :  
 MSVOA\_W  
 ClientSampled :  
 MP-081920-B11-0-2-GRAB

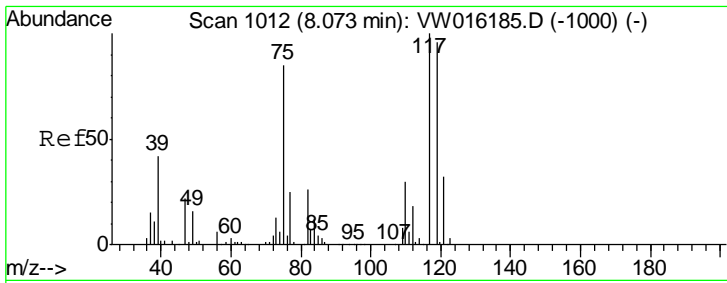
Tgt Ion	Resp	Lower	Upper
113	119689		
111	102.1	83.5	125.3
192	18.7	14.3	21.5



#36  
 1,1-Dichloropropene  
 Concen: 4.218 ug/l  
 RT: 7.95 min Scan# 991  
 Delta R.T. -0.14 min  
 Lab File: VW016290.D  
 Acq: 21 Aug 2020 04:08

Tgt Ion	Resp	Lower	Upper
75	16412		
110	8.9	18.1	54.3#
77	0.0	24.7	37.1#

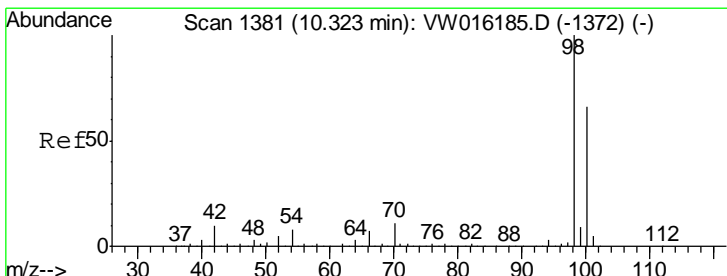
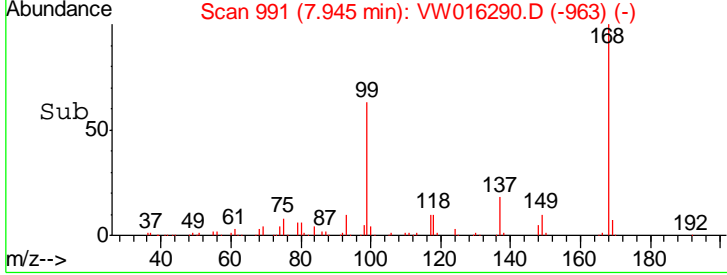
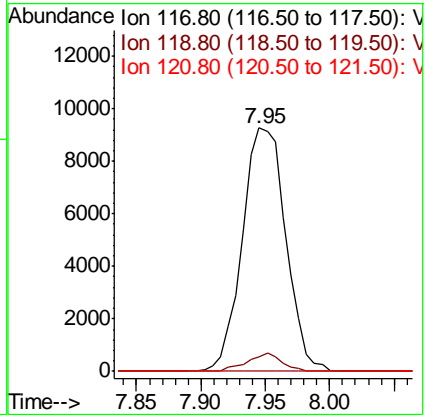
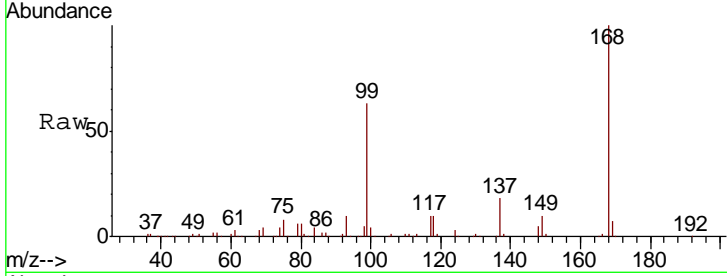




#38  
 Carbon Tetrachloride  
 Concen: 5.568 ug/l  
 RT: 7.95 min Scan# 991  
 Delta R.T. -0.13 min  
 Lab File: VW016290.D  
 Acq: 21 Aug 2020 04:08

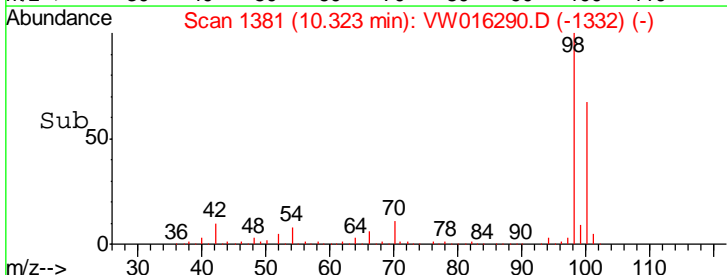
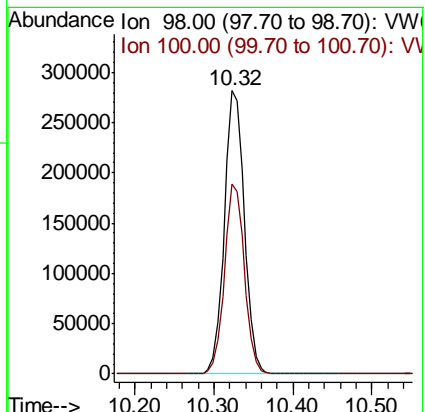
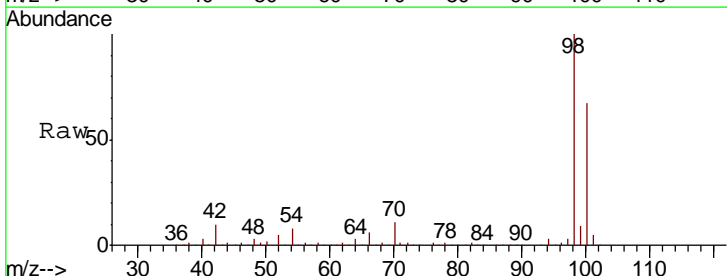
**Instrument :**  
 MSVOA\_W  
**ClientSampled :**  
 MP-081920-B11-0-2-GRAB

Tgt Ion	Resp	Lower	Upper
117	100		
119	6.0	76.6	115.0#
121	0.0	25.4	38.0#

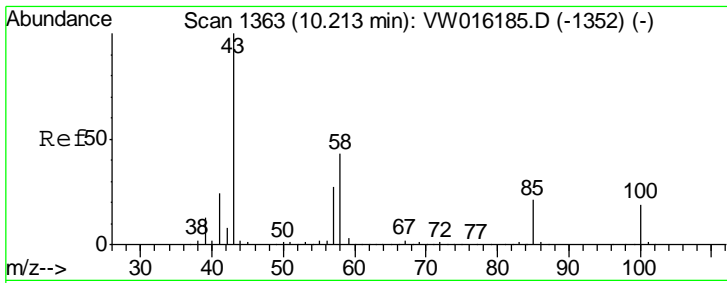


#50  
 Toluene-d8  
 Concen: 52.630 ug/l  
 RT: 10.32 min Scan# 1381  
 Delta R.T. 0.00 min  
 Lab File: VW016290.D  
 Acq: 21 Aug 2020 04:08

Tgt Ion	Resp	Lower	Upper
98	100		
100	66.5	53.5	80.3



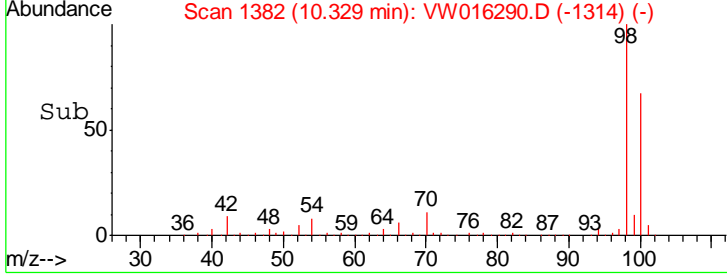
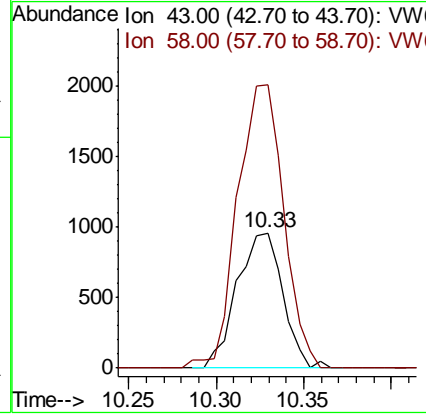
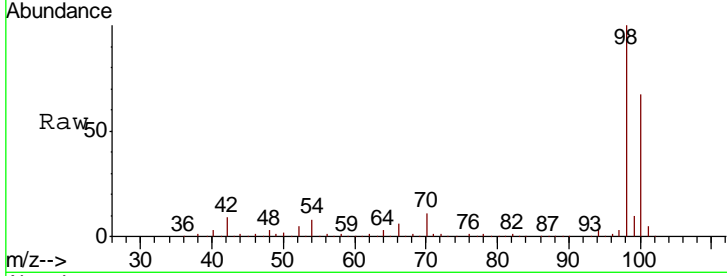




#51  
 4-Methyl-2-Pentanone  
 Concen: 1.374 ug/l  
 RT: 10.33 min Scan# 1382  
 Delta R.T. 0.12 min  
 Lab File: VW016290.D  
 Acq: 21 Aug 2020 04:08

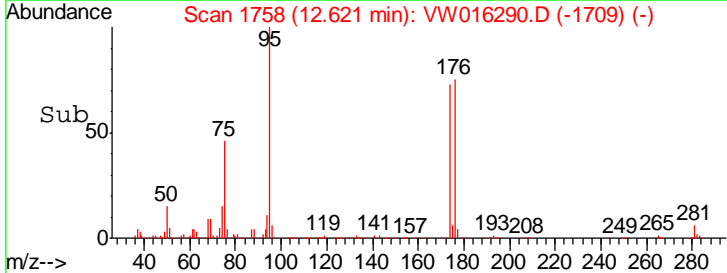
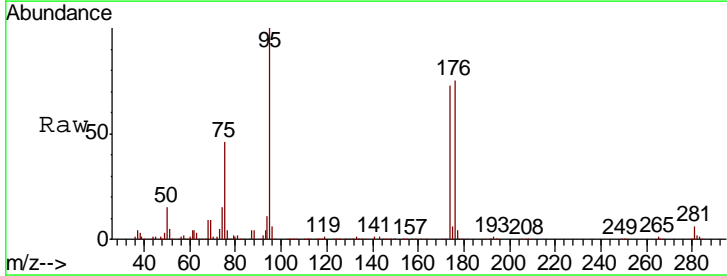
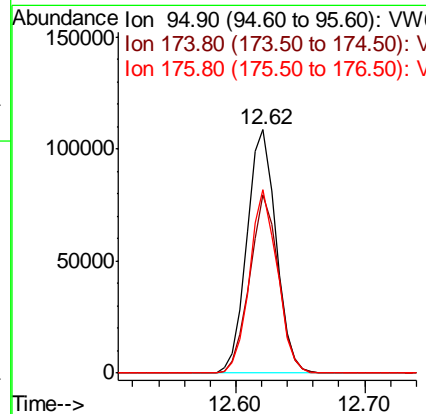
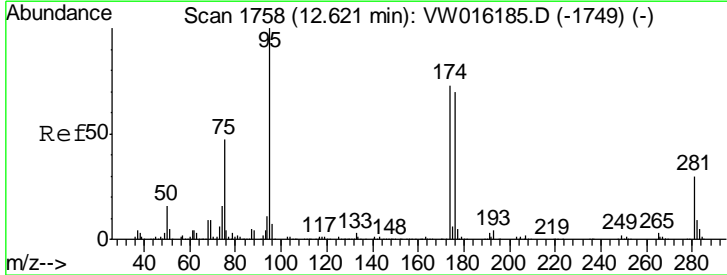
Instrument : MSVOA\_W  
 ClientSampled : MP-081920-B11-0-2-GRAB

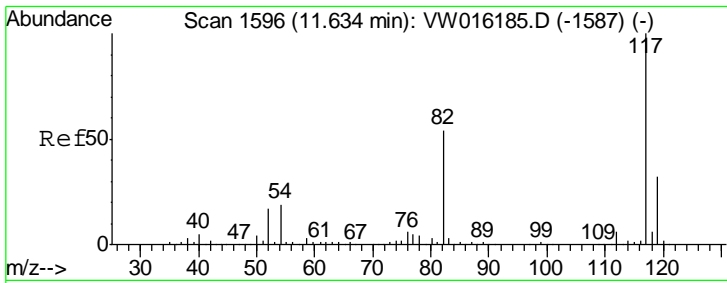
Tgt Ion: 43 Resp: 1744  
 Ion Ratio Lower Upper  
 43 100  
 58 210.7 33.7 50.5#



#62  
 4-Bromofluorobenzene  
 Concen: 50.243 ug/l  
 RT: 12.62 min Scan# 1758  
 Delta R.T. 0.00 min  
 Lab File: VW016290.D  
 Acq: 21 Aug 2020 04:08

Tgt Ion: 95 Resp: 169400  
 Ion Ratio Lower Upper  
 95 100  
 174 72.1 0.0 145.6  
 176 71.8 0.0 137.8

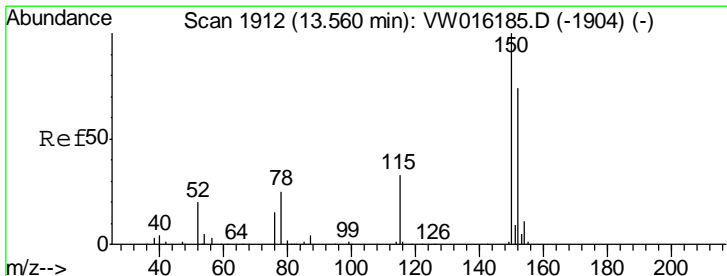
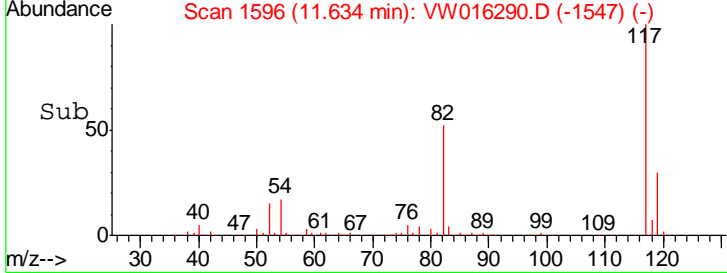
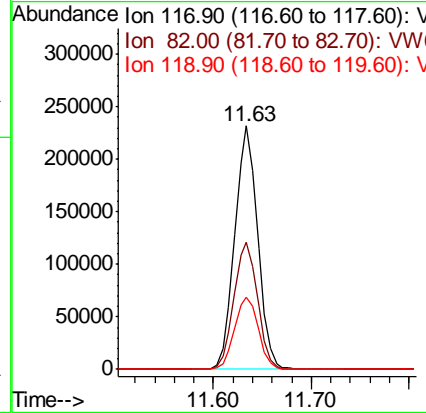
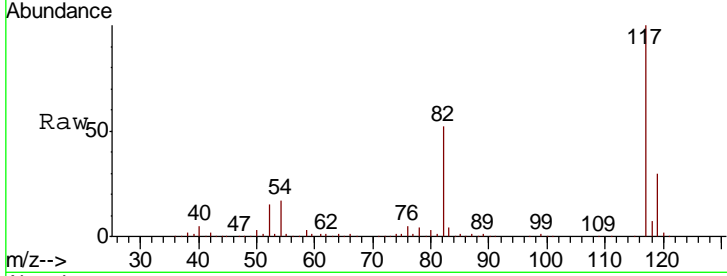




#63  
 Chlorobenzene-d5  
 Concen: 50.000 ug/l  
 RT: 11.63 min Scan# 1596  
 Delta R.T. 0.00 min  
 Lab File: VW016290.D  
 Acq: 21 Aug 2020 04:08

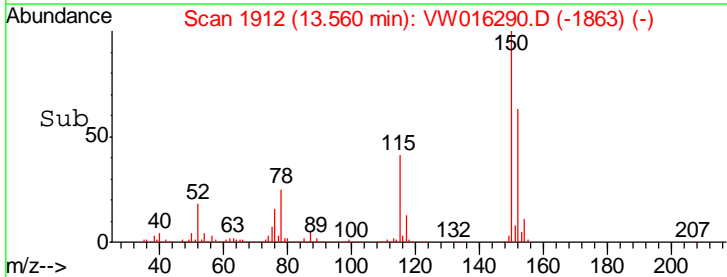
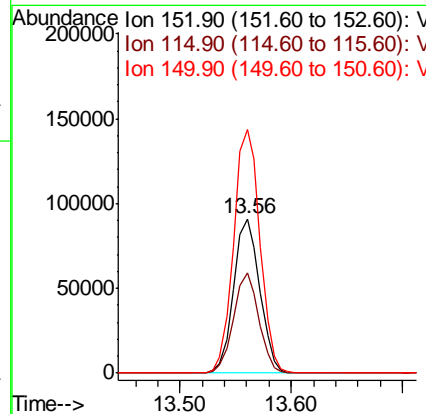
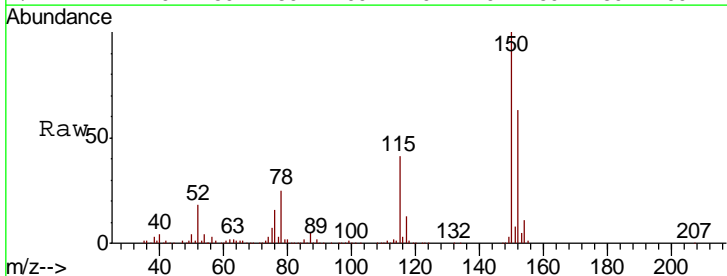
Instrument :  
 MSVOA\_W  
 ClientSampled :  
 MP-081920-B11-0-2-GRAB

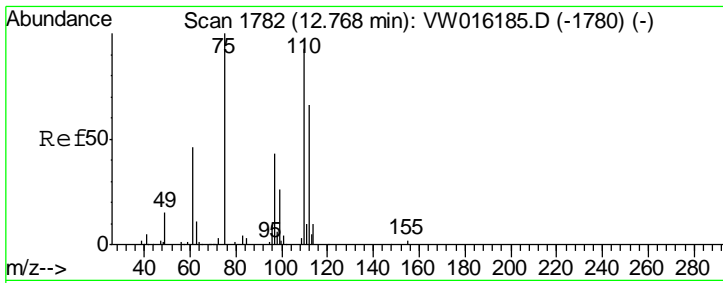
Tgt Ion	Resp	Lower	Upper
117	376083		
82	52.3	43.6	65.4
119	29.5	25.4	38.0



#72  
 1,4-Dichlorobenzene-d4  
 Concen: 50.000 ug/l  
 RT: 13.56 min Scan# 1912  
 Delta R.T. 0.00 min  
 Lab File: VW016290.D  
 Acq: 21 Aug 2020 04:08

Tgt Ion	Resp	Lower	Upper
152	146973		
152	100		
115	63.0	30.9	92.5
150	159.6	0.0	337.8

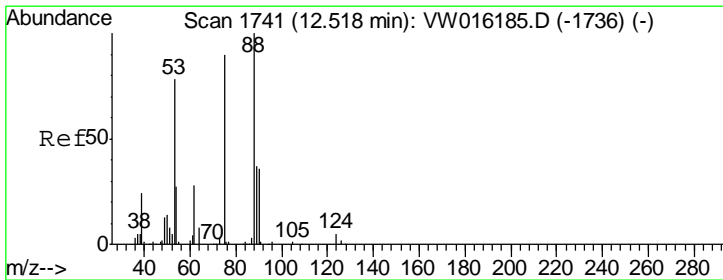
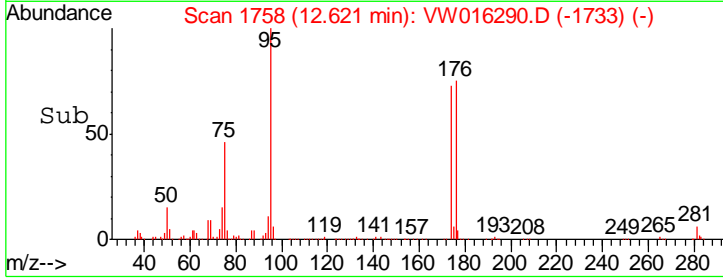
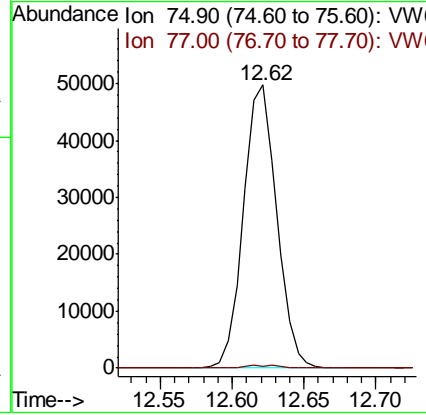
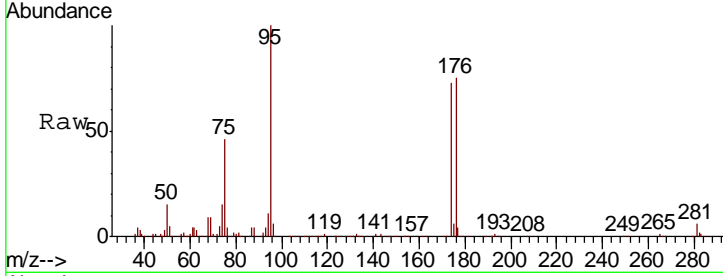




#76  
 1,2,3-Trichloropropane  
 Concen: 58.912 ug/l  
 RT: 12.62 min Scan# 1758  
 Delta R.T. -0.15 min  
 Lab File: VW016290.D  
 Acq: 21 Aug 2020 04:08

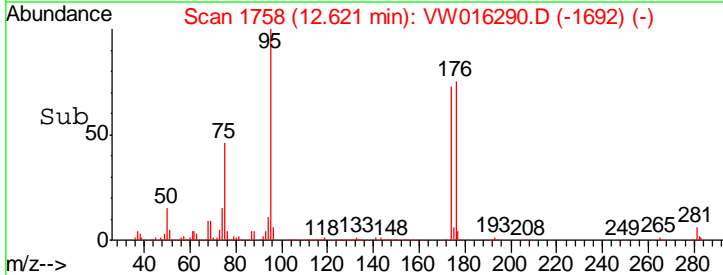
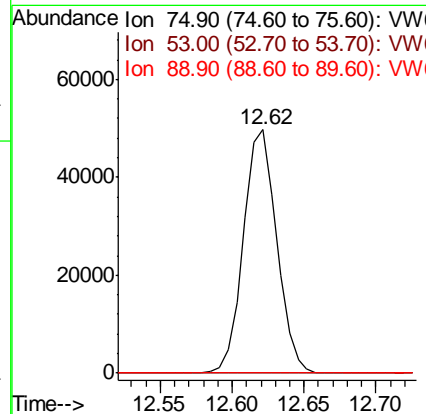
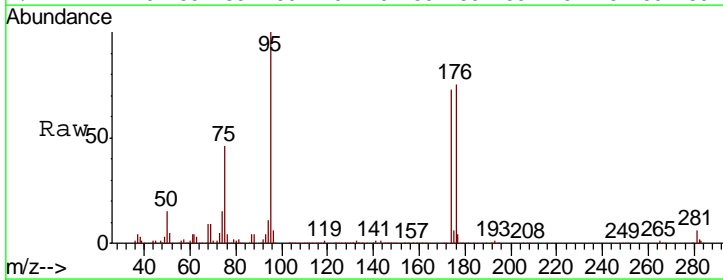
Instrument : MSVOA\_W  
 ClientSampleId : MP-081920-B11-0-2-GRAB

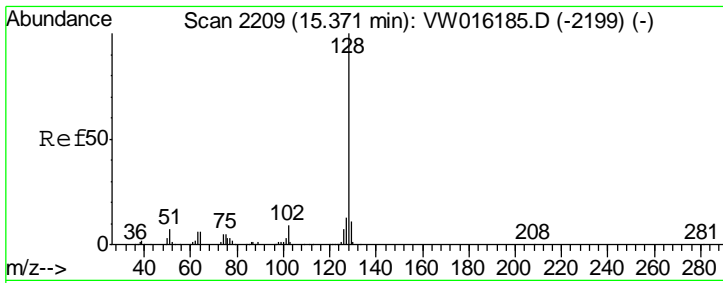
Tgt Ion: 75 Resp: 79630  
 Ion Ratio Lower Upper  
 75 100  
 77 1.1 173.6 520.6#



#81  
 trans-1,4-Dichloro-2-butene  
 Concen: 141.309 ug/l  
 RT: 12.62 min Scan# 1758  
 Delta R.T. 0.10 min  
 Lab File: VW016290.D  
 Acq: 21 Aug 2020 04:08

Tgt Ion: 75 Resp: 79630  
 Ion Ratio Lower Upper  
 75 100  
 53 0.0 74.6 111.8#  
 89 0.0 37.2 55.8#





#95  
 Naphthalene  
 Concen: 3.760 ug/l  
 RT: 15.36 min Scan# 2208  
 Delta R.T. -0.01 min  
 Lab File: VW016290.D  
 Acq: 21 Aug 2020 04:08

Instrument : MSVOA\_W  
 ClientSampled : MP-081920-B11-0-2-GRAB

Tot Ion	Ratio	Lower	Upper
128	100		
127	3.6	10.2	15.4#
129	5.5	8.7	13.1#

