

Data Path : Z:\VOASRV\HPCHEM1\MSVOA_W\DATA\VW090619\
 Data File : VW012705.D
 Acq On : 06 Sep 2019 22:06
 Operator : SY/VA
 Sample : K4581-18
 Misc : 3.00G/5ML/MSVOA_W/SOIL
 ALS Vial : 25 Sample Multiplier: 1

Instrument :
 MSVOA_W
 ClientSampleId :
 T12-D3-(3.5)

Integration Parameters: RTEINT.P

Integrator: RTE
 Smoothing : ON Filtering: 5
 Sampling : 1 Min Area: 3 % of largest Peak
 Start Thrs: 0.2 Max Peaks: 100
 Stop Thrs : 0 Peak Location: TOP

If leading or trailing edge < 100 prefer < Baseline drop else tangent >
 Peak separation: 5

Method : Z:\VOASRV\HPCHEM1\MSVOA_W\METHOD\82W082319S.M
 Title : SW846 8260

Signal : TIC

peak #	R.T. min	first scan	max scan	last scan	PK TY	peak height	corr. area	corr. % max.	% of total
1	2.154	35	41	46	rBV	9626	17980	1.53%	0.296%
2	4.909	482	493	508	rBV2	26434	94584	8.06%	1.555%
3	5.934	652	661	671	rVB3	5037	15996	1.36%	0.263%
4	7.537	915	924	933	rBV4	5499	15780	1.35%	0.259%
5	7.884	970	981	985	rBV2	150856	352391	30.04%	5.794%
6	7.945	985	991	1002	rVB	317486	704751	60.09%	11.587%
7	8.305	1041	1050	1060	rBV	167806	365866	31.19%	6.015%
8	8.842	1129	1138	1150	rBV	458861	900245	76.75%	14.802%
9	10.323	1373	1381	1390	rBV	676480	1172915	100.00%	19.285%
10	10.707	1437	1444	1450	rBV	7249	12503	1.07%	0.206%
11	11.628	1587	1595	1606	rBV	559081	940179	80.16%	15.458%
12	12.615	1748	1757	1770	rVB	405127	683379	58.26%	11.236%
13	13.560	1904	1912	1919	rBV	453683	748617	63.83%	12.309%
14	14.072	1990	1996	2005	rVB	9691	15935	1.36%	0.262%
15	14.524	2063	2070	2077	rVB3	8472	15563	1.33%	0.256%
16	14.725	2093	2103	2108	rBV2	15189	25426	2.17%	0.418%

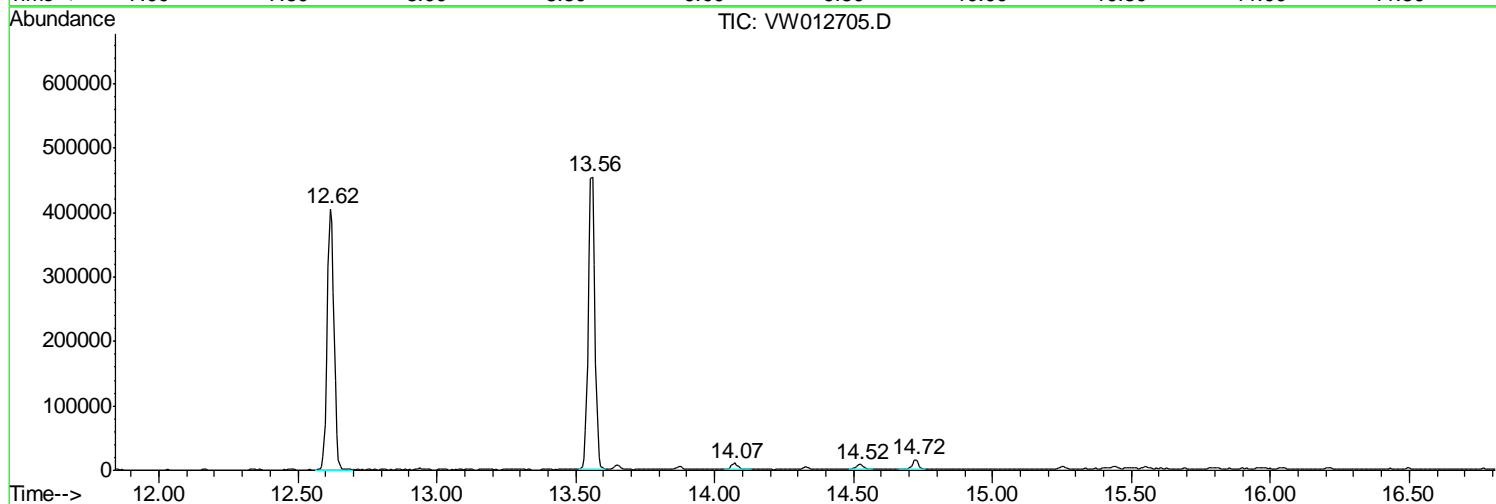
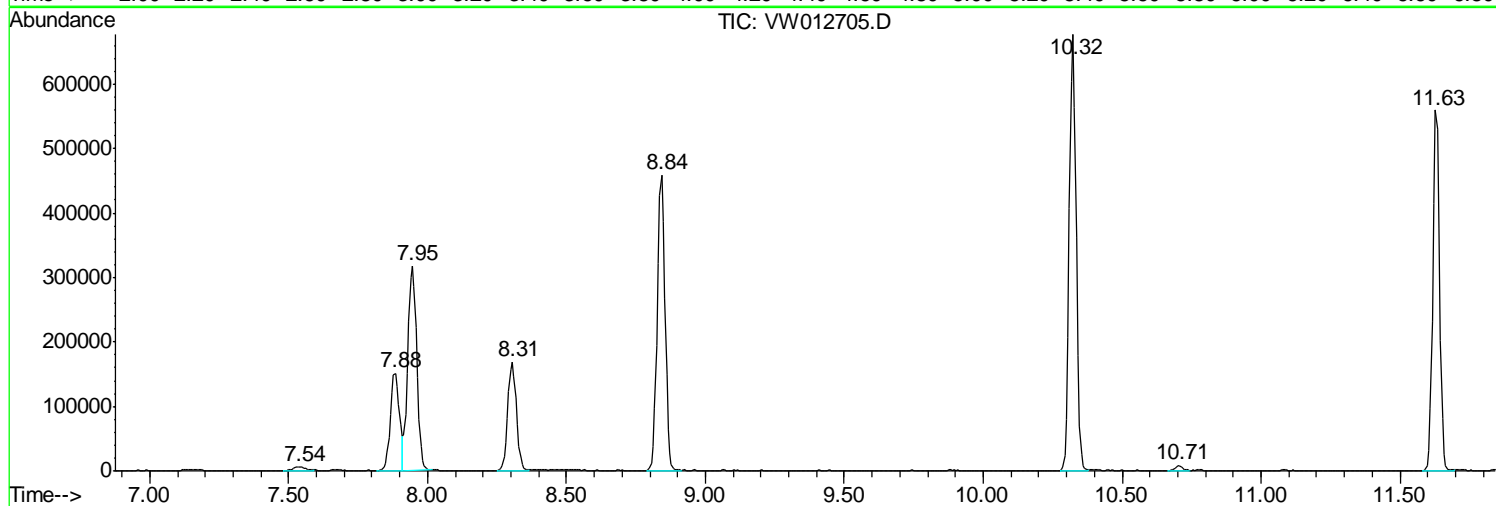
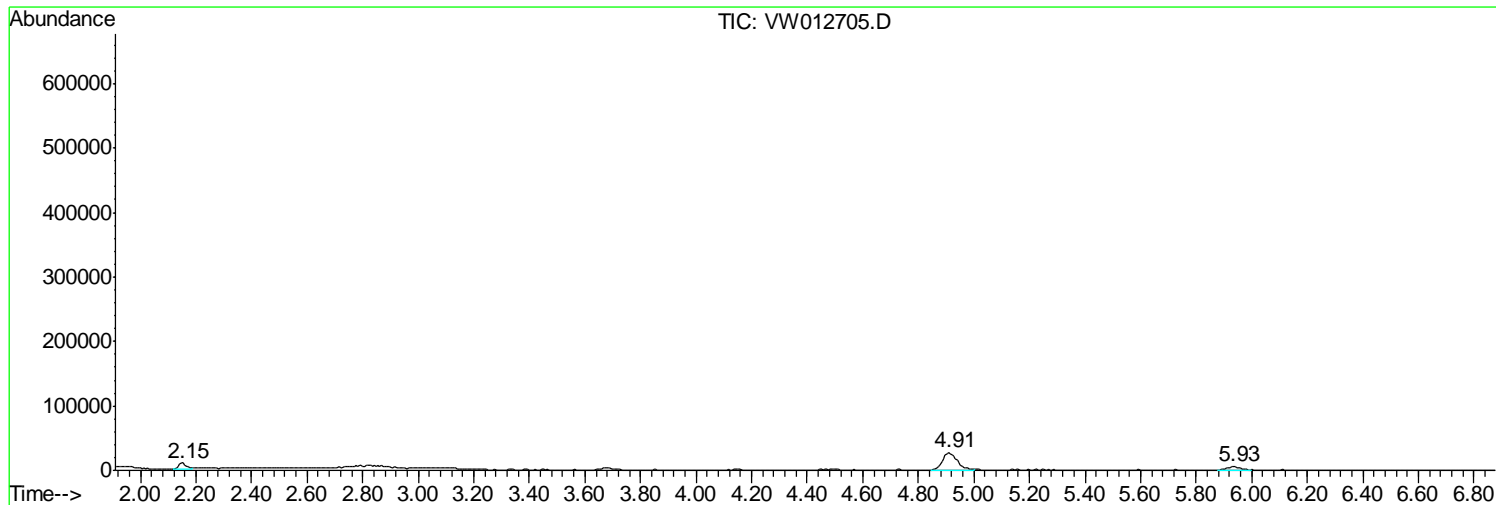
Sum of corrected areas: 6082110

Data Path : Z:\VOASRV\HPCHEM1\MSVOA_W\DATA\VW090619\
Data File : VW012705.D
Acq On : 06 Sep 2019 22:06
Operator : SY/VA
Sample : K4581-18
Misc : 3.00G/5ML/MSVOA_W/SOIL
ALS Vial : 25 Sample Multiplier: 1

Instrument :
MSVOA_W
ClientSampleId :
T12-D3-(3.5)

Quant Method : Z:\VOASRV\HPCHEM1\MSVOA_W\METHOD\82W082319S.M
Quant Title : SW846 8260

TIC Library : C:\DATABASE\NIST11.L
TIC Integration Parameters: LSCINT.P



Data Path : Z:\VOASRV\HPCHEM1\MSVOA_W\DATA\VW090619\
Data File : VW012705.D
Acq On : 06 Sep 2019 22:06
Operator : SY/VA
Sample : K4581-18
Misc : 3.00G/5ML/MSVOA_W/SOIL
ALS Vial : 25 Sample Multiplier: 1

Instrument :
MSVOA_W
ClientSampleId :
T12-D3-(3.5)

Quant Method : Z:\VOASRV\HPCHEM1\MSVOA_W\METHOD\82W082319S.M
Quant Title : SW846 8260

TIC Library : C:\DATABASE\NIST11.L
TIC Integration Parameters: LSCINT.P

No Library Search Compounds Detected

Data Path : Z:\VOASRV\HPCHEM1\MSVOA_W\DATA\VW090619\
Data File : VW012705.D
Acq On : 06 Sep 2019 22:06
Operator : SY/VA
Sample : K4581-18
Misc : 3.00G/5ML/MSVOA_W/SOIL
ALS Vial : 25 Sample Multiplier: 1

Instrument :
MSVOA_W
ClientSampleId :
T12-D3-(3.5)

Quant Method : Z:\VOASRV\HPCHEM1\MSVOA_W\METHOD\82W082319S.M
Quant Title : SW846 8260

TIC Library : C:\DATABASE\NIST11.L
TIC Integration Parameters: LSCINT.P

TIC Top Hit name	RT	EstConc	Units	Response	--Internal Standard--			
					#	RT	Resp	Conc
