

Data Path : Z:\VOASRV\HPCHEM1\MSVOA W\DATA\VW092519\  
 Data File : VW013295.D  
 Acq On : 25 Sep 2019 14:28  
 Operator : SY/VA  
 Sample : K5038-02  
 Misc : 5.32G/5ML/MSVOA W/SOIL  
 ALS Vial : 8 Sample Multiplier: 1

Instrument :  
 MSVOA\_W  
 ClientSampleId :

Quant Time: Sep 25 17:20:53 2019  
 Quant Method : Z:\VOASRV\HPCHEM1\MSVOA\_W\METHOD\82W092019S.M  
 Quant Title : SW846 8260  
 QLast Update : Fri Sep 20 15:58:08 2019  
 Response via : Initial Calibration

Internal Standards	R.T.	QIon	Response	Conc	Units	Dev(Min)
1) Pentafluorobenzene	7.95	168	318256	50.00	ug/l	0.00
34) 1,4-Difluorobenzene	8.84	114	470354	50.00	ug/l	0.00
63) Chlorobenzene-d5	11.63	117	347990	50.00	ug/l	0.00
72) 1,4-Dichlorobenzene-d4	13.56	152	123579	50.00	ug/l	0.00

## System Monitoring Compounds

33) 1,2-Dichloroethane-d4	8.30	65	142692	54.94	ug/l	0.00
Spiked Amount				50.000		
				Recovery	=	109.88%
35) Dibromofluoromethane	7.88	113	133977	51.79	ug/l	0.00
Spiked Amount				50.000		
				Recovery	=	103.58%
50) Toluene-d8	10.32	98	521751	48.19	ug/l	0.00
Spiked Amount				50.000		
				Recovery	=	96.38%
62) 4-Bromofluorobenzene	12.62	95	139576	37.74	ug/l	0.00
Spiked Amount				50.000		
				Recovery	=	75.48%

## Target Compounds

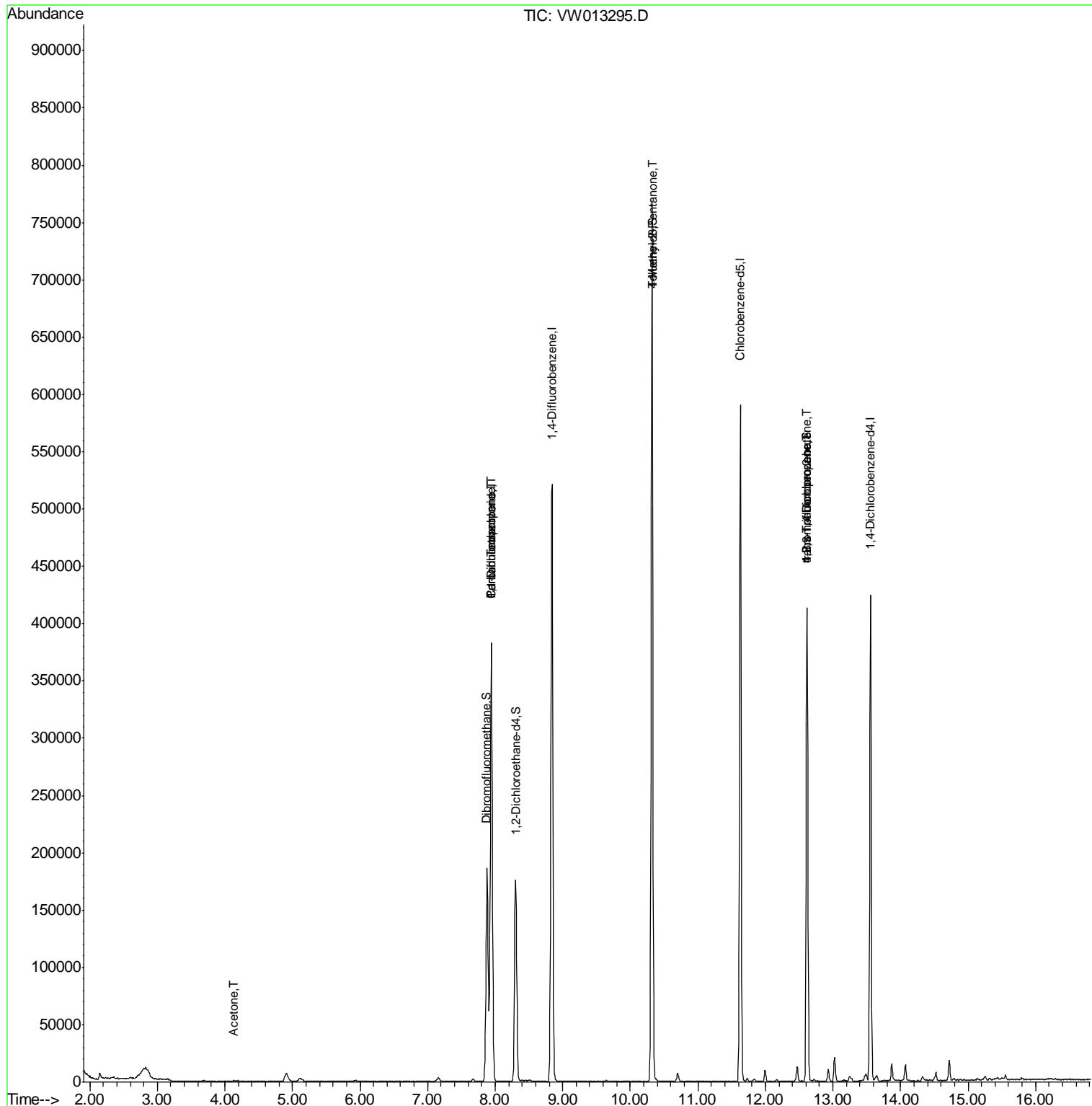
					Qvalue	
11) Tert butyl alcohol	5.22	59	113	Below Cal	#	70
16) Acetone	4.13	43	935	1.596	ug/l #	82
20) Methylene Chloride	4.90	84	6535	Below Cal	#	88
26) 2,2-Dichloropropane	7.14	77	78	Below Cal	#	52
36) 1,1-Dichloropropene	7.95	75	20356	4.468	ug/l #	49
38) Carbon Tetrachloride	7.95	117	27545	6.745	ug/l #	19
51) 4-Methyl-2-Pentanone	10.32	43	2037	1.095	ug/l #	1
76) 1,2,3-Trichloropropane	12.62	75	65706	60.205	ug/l #	100
81) trans-1,4-Dichloro-2-buten	12.62	75	65706	135.095	ug/l #	12

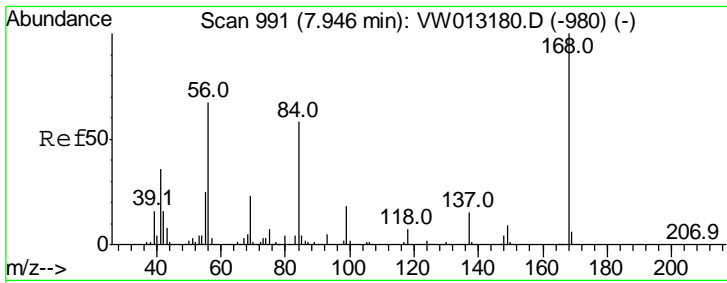
(#) = qualifier out of range (m) = manual integration (+) = signals summed

Data Path : Z:\VOASRV\HPCHEM1\MSVOA W\DATA\VW092519\  
 Data File : VW013295.D  
 Acq On : 25 Sep 2019 14:28  
 Operator : SY/VA  
 Sample : K5038-02  
 Misc : 5.32G/5ML/MSVOA W/SOIL  
 ALS Vial : 8 Sample Multiplier: 1

Instrument :  
 MSVOA\_W  
 ClientSampled :

Quant Time: Sep 25 17:20:53 2019  
 Quant Method : Z:\VOASRV\HPCHEM1\MSVOA\_W\METHOD\82W092019S.M  
 Quant Title : SW846 8260  
 QLast Update : Fri Sep 20 15:58:08 2019  
 Response via : Initial Calibration

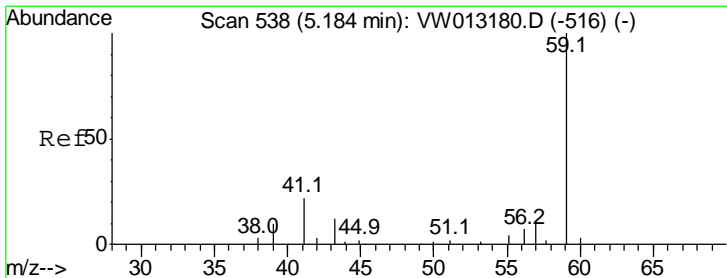
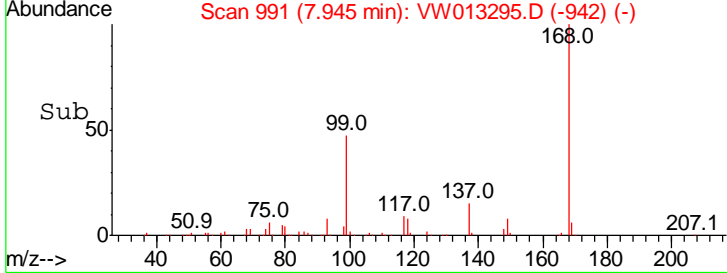
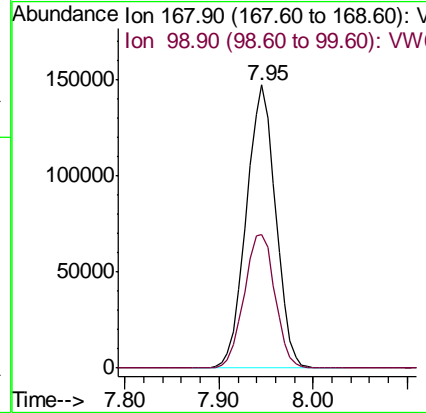
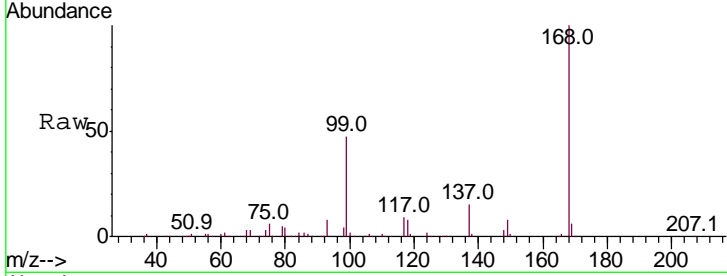




#1  
 Pentafluorobenzene  
 Concen: 50.000 ug/l  
 RT: 7.95 min Scan# 991  
 Delta R.T. -0.00 min  
 Lab File: VW013295.D  
 Acq: 25 Sep 2019 14:28

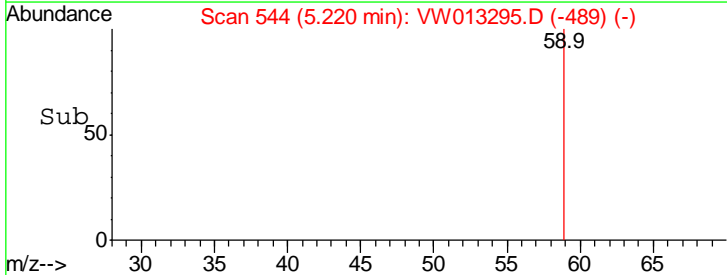
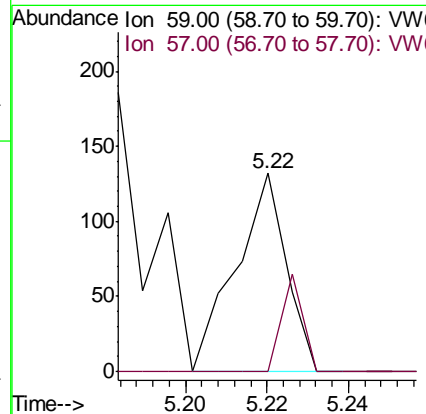
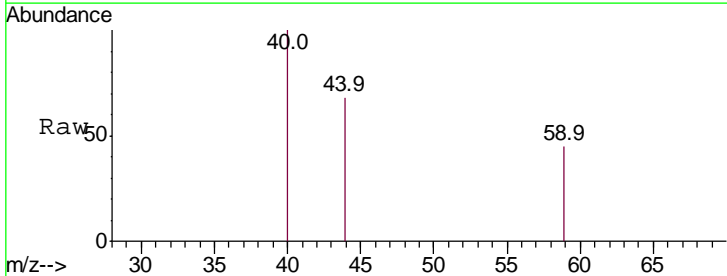
Instrument :  
 MSVOA\_W  
 ClientSampled :

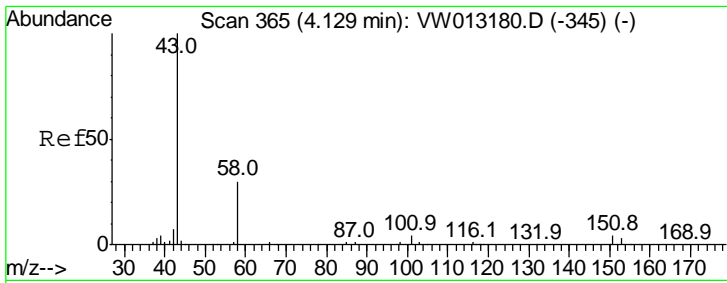
Tgt Ion	Resp	Lower	Upper
168	100		
99	47.3	40.2	60.4



#11  
 Tert butyl alcohol  
 Concen: Below Cal  
 RT: 5.22 min Scan# 544  
 Delta R.T. 0.04 min  
 Lab File: VW013295.D  
 Acq: 25 Sep 2019 14:28

Tgt Ion	Resp	Lower	Upper
59	100		
57	21.2	8.2	12.2#

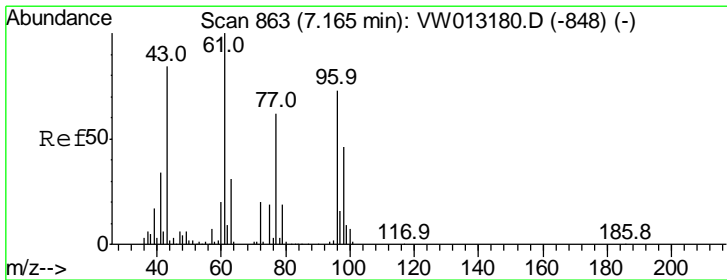
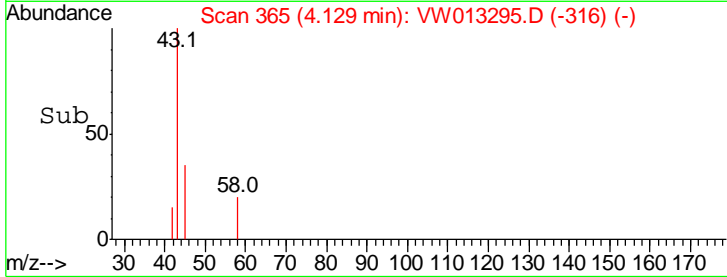
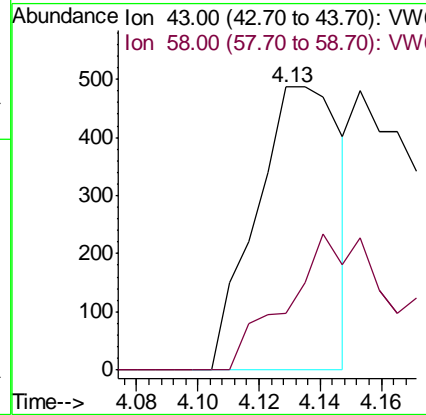
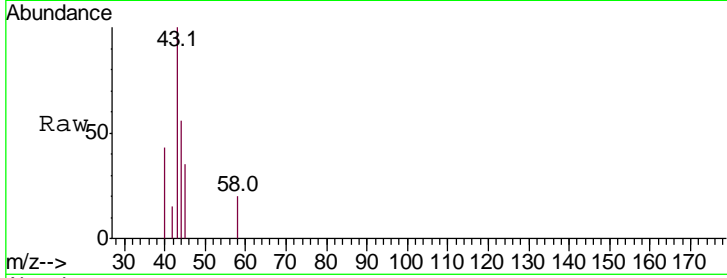




#16  
 Acetone  
 Concen: 1.596 ug/l  
 RT: 4.13 min Scan# 365  
 Delta R.T. -0.00 min  
 Lab File: VW013295.D  
 Acq: 25 Sep 2019 14:28

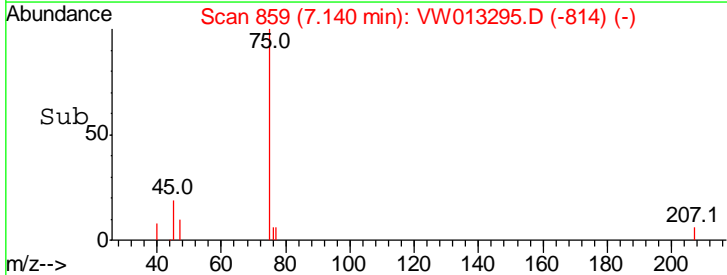
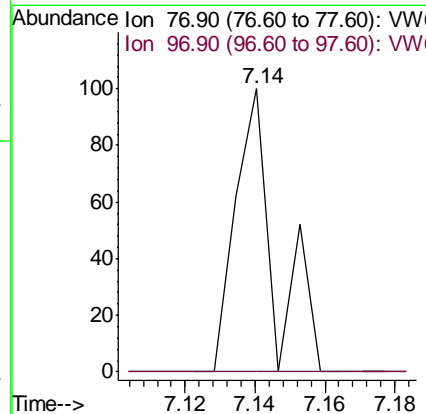
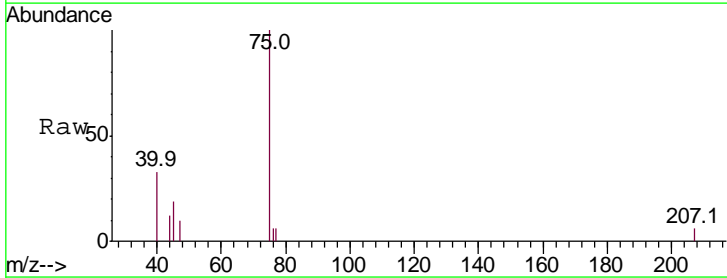
Instrument :  
 MSVOA\_W  
 ClientSampled :

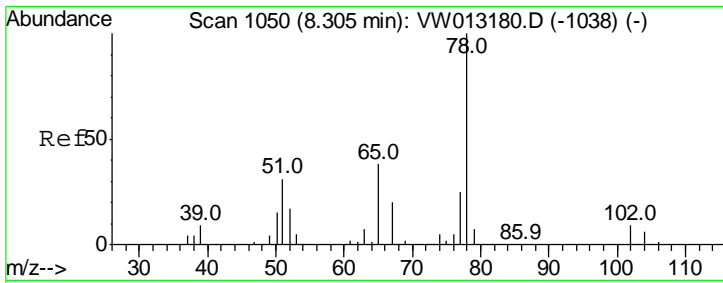
Tgt Ion	Ratio	Lower	Upper
43	100		
58	20.1	24.1	36.1#



#26  
 2,2-Dichloropropane  
 Concen: Below Cal  
 RT: 7.14 min Scan# 859  
 Delta R.T. -0.02 min  
 Lab File: VW013295.D  
 Acq: 25 Sep 2019 14:28

Tgt Ion	Ratio	Lower	Upper
77	100		
97	0.0	11.8	35.4#

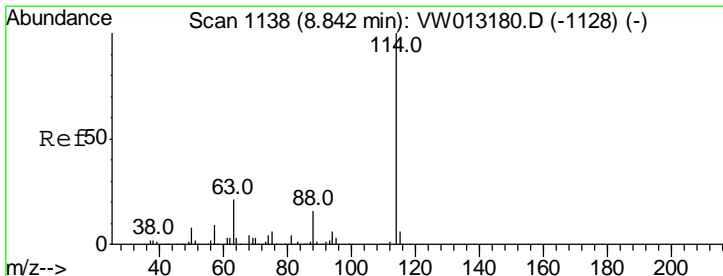
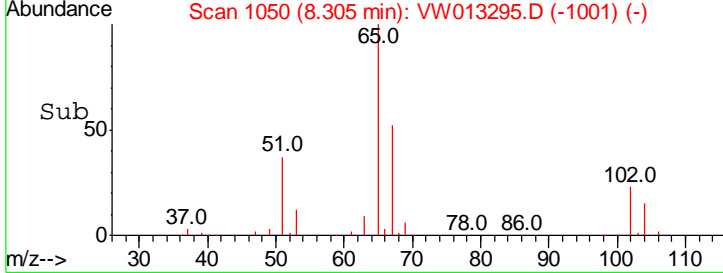
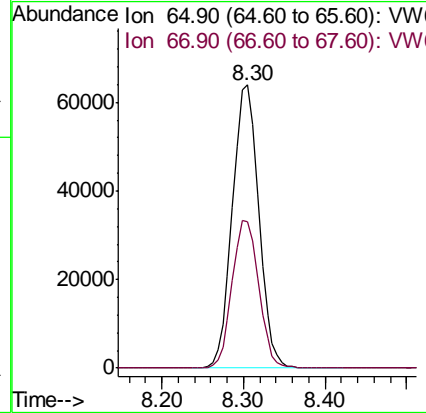
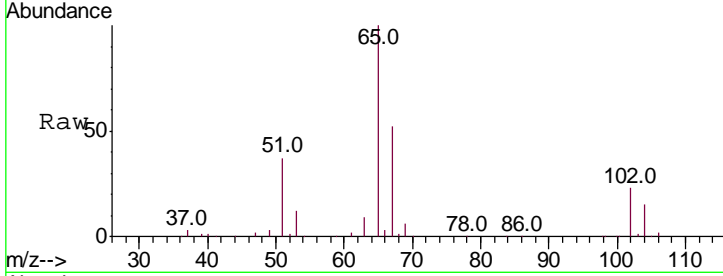




#33  
 1,2-Dichloroethane-d4  
 Concen: 54.936 ug/l  
 RT: 8.30 min Scan# 1050  
 Delta R.T. -0.00 min  
 Lab File: VW013295.D  
 Acq: 25 Sep 2019 14:28

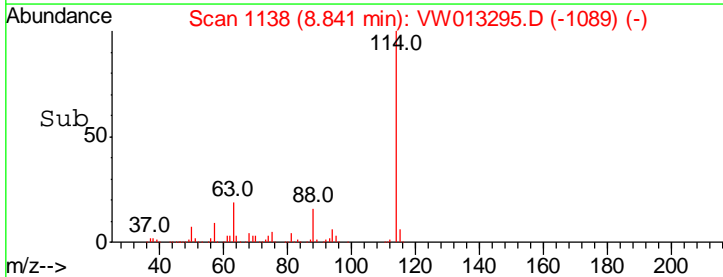
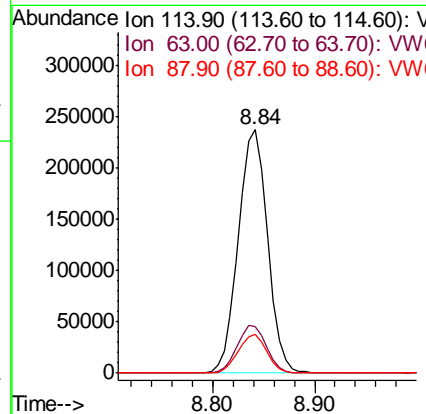
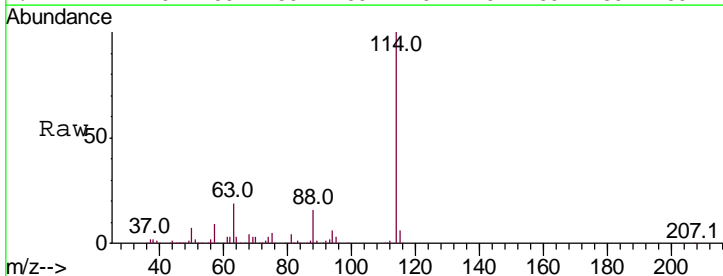
Instrument :  
 MSVOA\_W  
 ClientSampled :

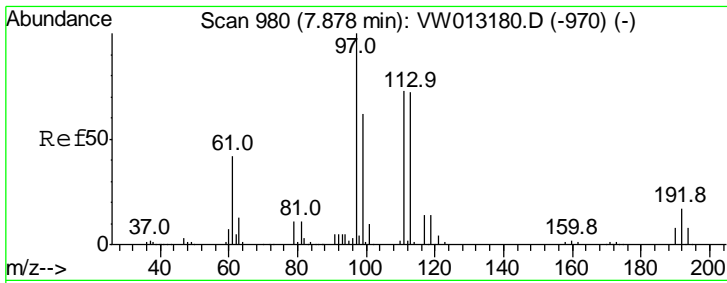
Tgt Ion	Resp	Lower	Upper
65	100		
67	52.6	0.0	106.2



#34  
 1,4-Difluorobenzene  
 Concen: 50.000 ug/l  
 RT: 8.84 min Scan# 1138  
 Delta R.T. -0.00 min  
 Lab File: VW013295.D  
 Acq: 25 Sep 2019 14:28

Tgt Ion	Resp	Lower	Upper
114	100		
63	19.3	0.0	41.4
88	15.7	0.0	32.0

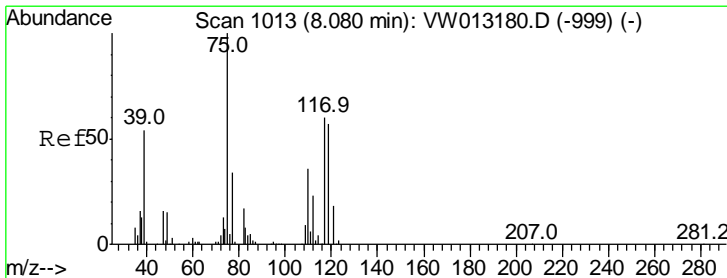
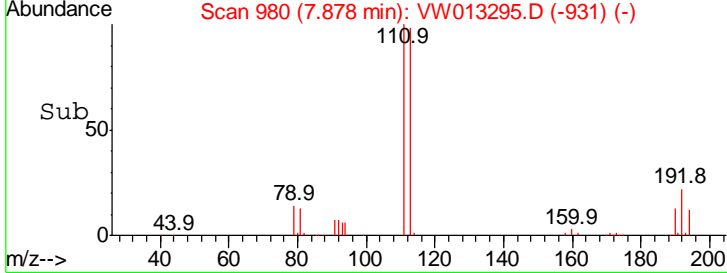
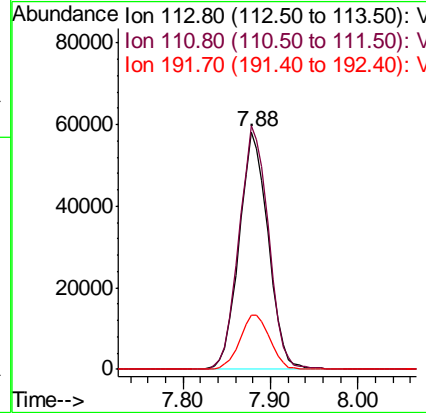
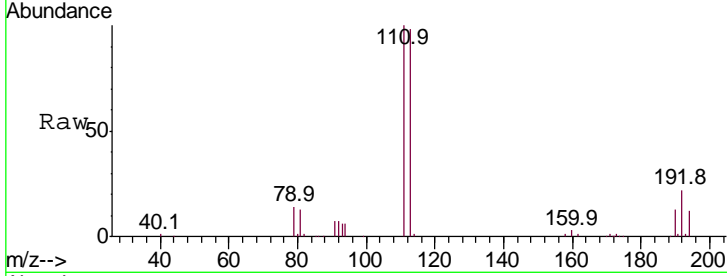




#35  
 Dibromofluoromethane  
 Concen: 51.790 ug/l  
 RT: 7.88 min Scan# 980  
 Delta R.T. -0.00 min  
 Lab File: VW013295.D  
 Acq: 25 Sep 2019 14:28

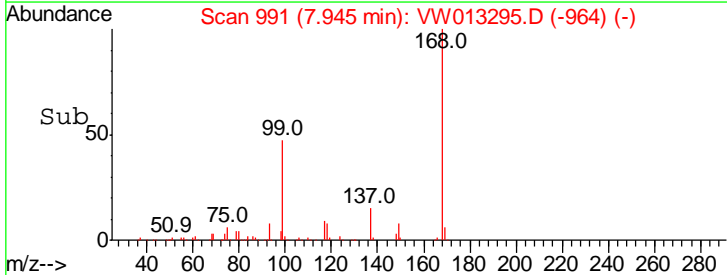
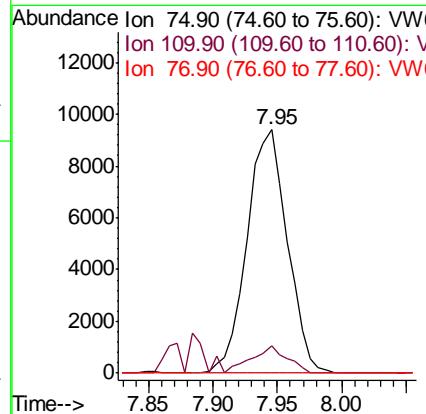
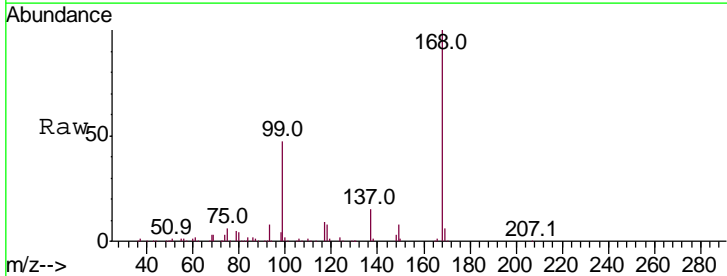
Instrument :  
 MSVOA\_W  
 ClientSampled :

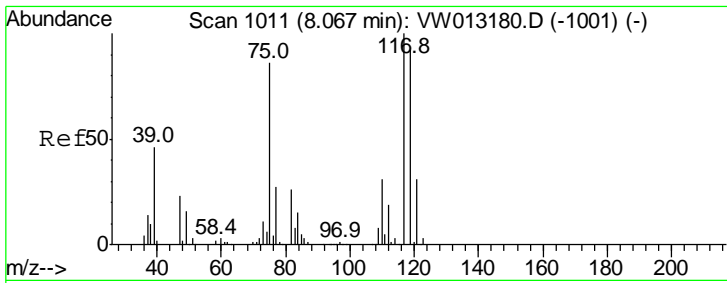
Tgt Ion	Resp	Lower	Upper
113	100		
111	104.2	81.9	122.9
192	23.7	19.1	28.7



#36  
 1,1-Dichloropropene  
 Concen: 4.468 ug/l  
 RT: 7.95 min Scan# 991  
 Delta R.T. -0.13 min  
 Lab File: VW013295.D  
 Acq: 25 Sep 2019 14:28

Tgt Ion	Resp	Lower	Upper
75	100		
110	10.0	18.1	54.3#
77	0.0	25.8	38.6#

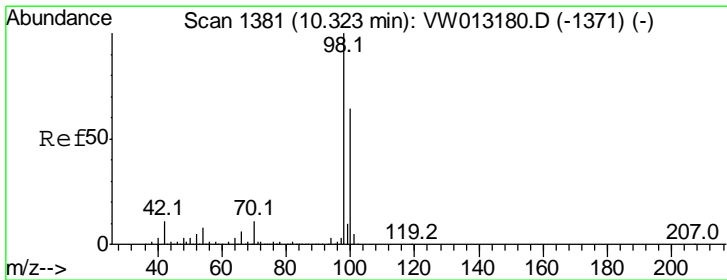
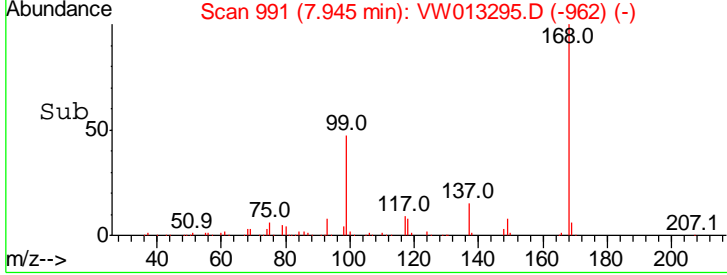
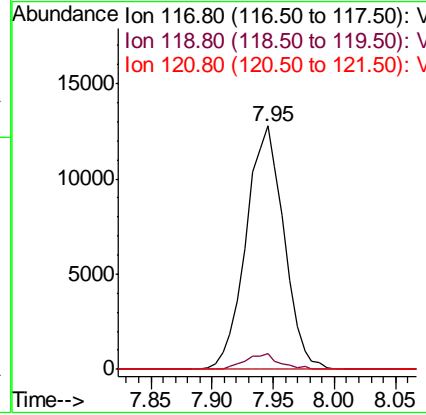
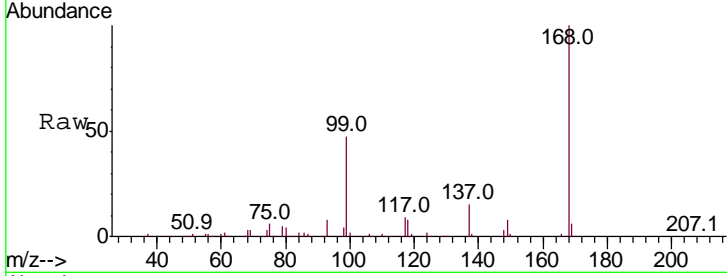




#38  
 Carbon Tetrachloride  
 Concen: 6.745 ug/l  
 RT: 7.95 min Scan# 991  
 Delta R.T. -0.12 min  
 Lab File: VW013295.D  
 Acq: 25 Sep 2019 14:28

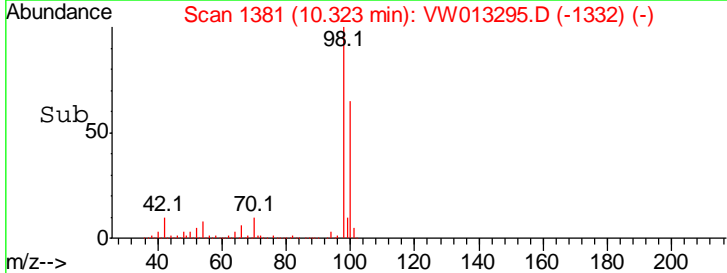
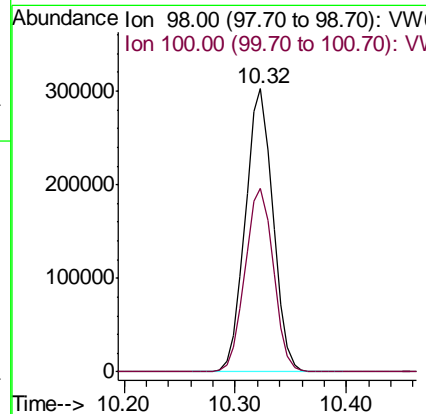
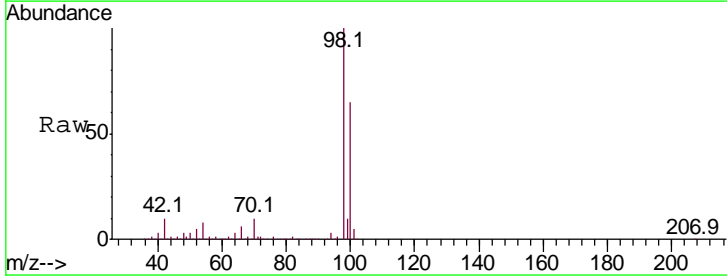
Instrument :  
 MSVOA\_W  
 ClientSampled :

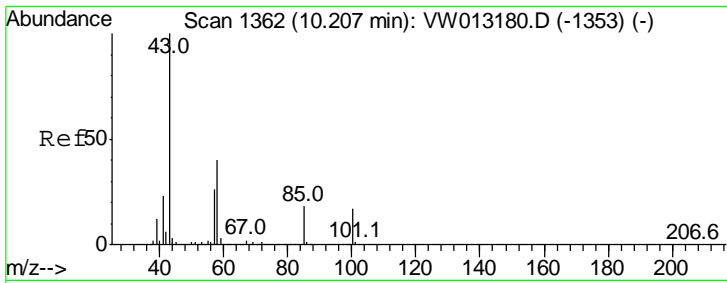
Tgt Ion	Resp	Lower	Upper
117	100		
119	6.4	73.5	110.3#
121	0.0	25.0	37.6#



#50  
 Toluene-d8  
 Concen: 48.191 ug/l  
 RT: 10.32 min Scan# 1381  
 Delta R.T. -0.00 min  
 Lab File: VW013295.D  
 Acq: 25 Sep 2019 14:28

Tgt Ion	Resp	Lower	Upper
98	100		
100	66.7	52.9	79.3

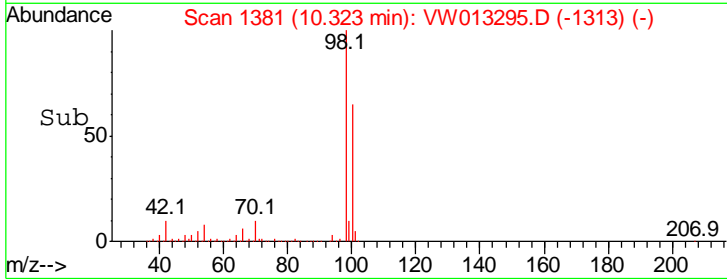
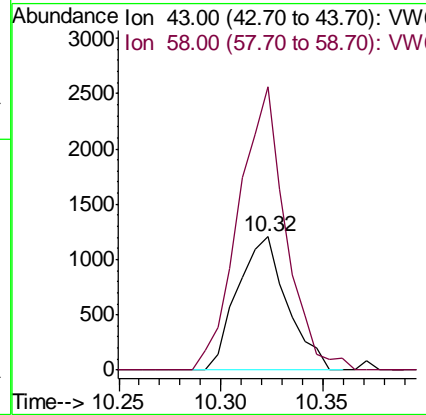
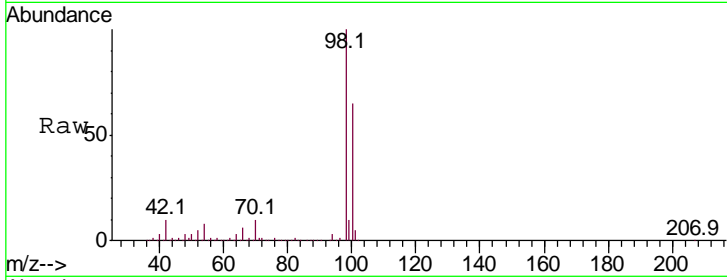




#51  
 4-Methyl-2-Pentanone  
 Concen: 1.095 ug/l  
 RT: 10.32 min Scan# 1381  
 Delta R.T. 0.12 min  
 Lab File: VW013295.D  
 Acq: 25 Sep 2019 14:28

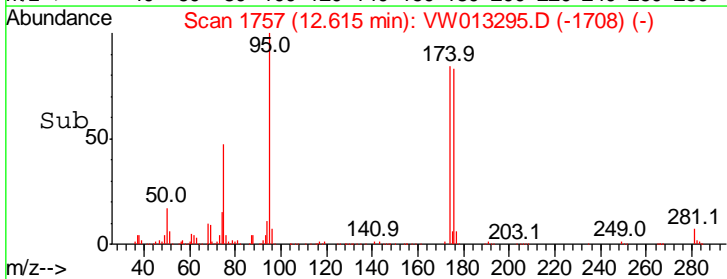
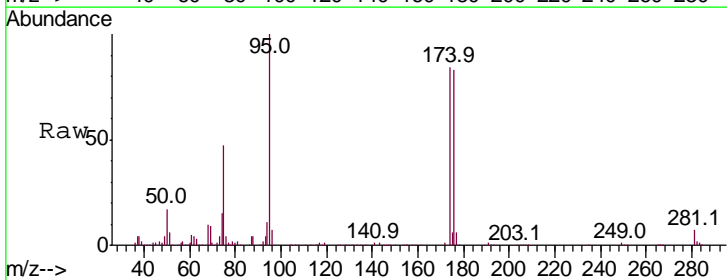
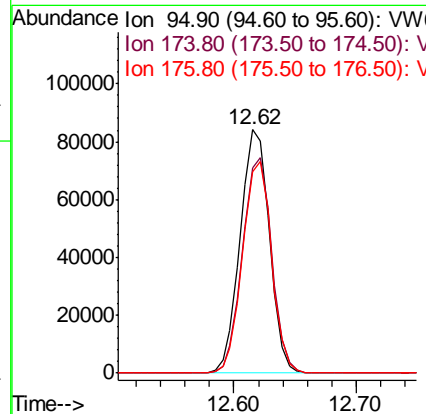
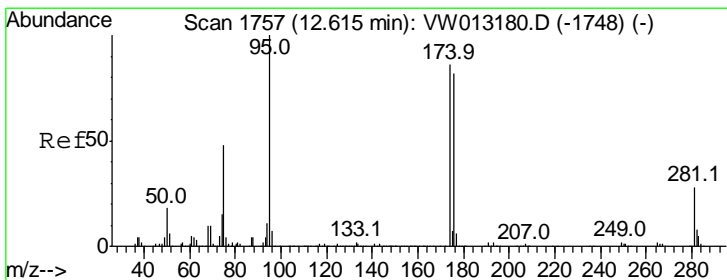
Instrument :  
 MSVOA\_W  
 ClientSampled :

Tgt Ion: 43 Resp: 2037  
 Ion Ratio Lower Upper  
 43 100  
 58 201.9 31.7 47.5#

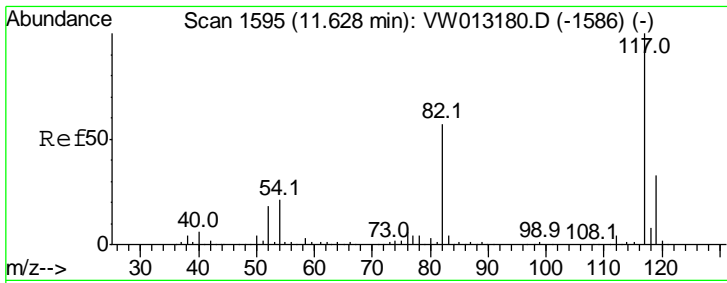


#62  
 4-Bromofluorobenzene  
 Concen: 37.741 ug/l  
 RT: 12.62 min Scan# 1757  
 Delta R.T. -0.00 min  
 Lab File: VW013295.D  
 Acq: 25 Sep 2019 14:28

Tgt Ion: 95 Resp: 139576  
 Ion Ratio Lower Upper  
 95 100  
 174 88.6 0.0 178.4  
 176 86.2 0.0 172.2



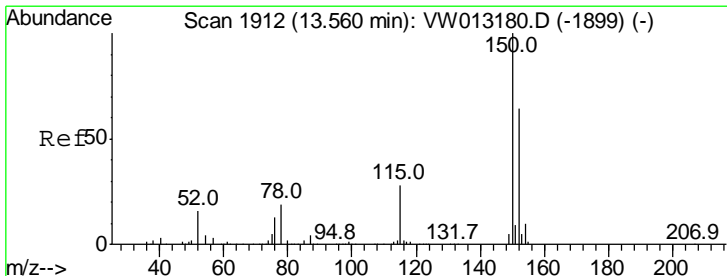
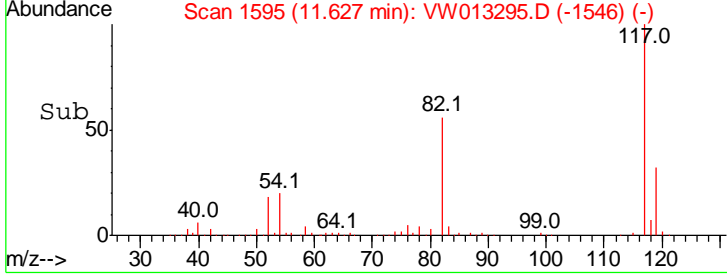
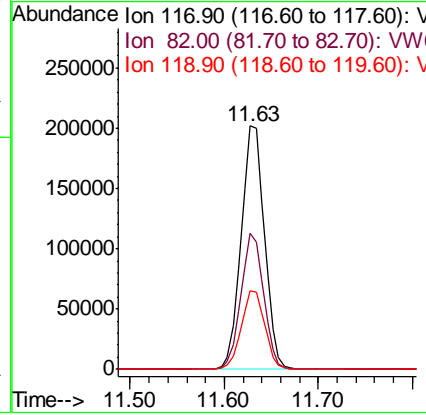
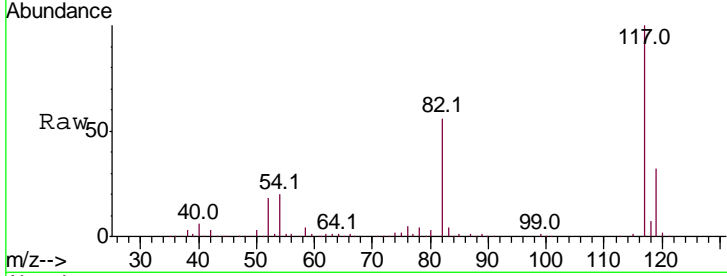




#63  
 Chlorobenzene-d5  
 Concen: 50.000 ug/l  
 RT: 11.63 min Scan# 1595  
 Delta R.T. -0.00 min  
 Lab File: VW013295.D  
 Acq: 25 Sep 2019 14:28

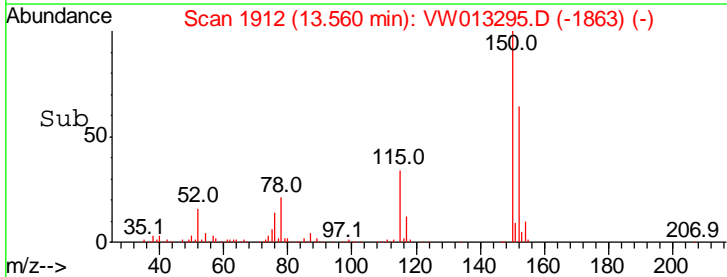
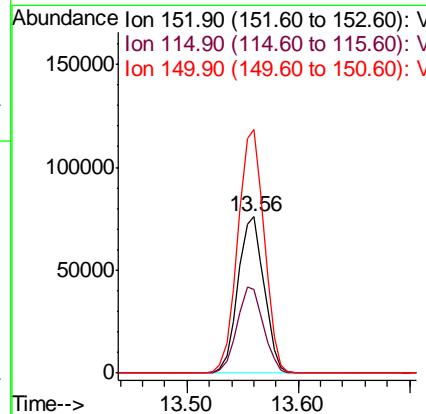
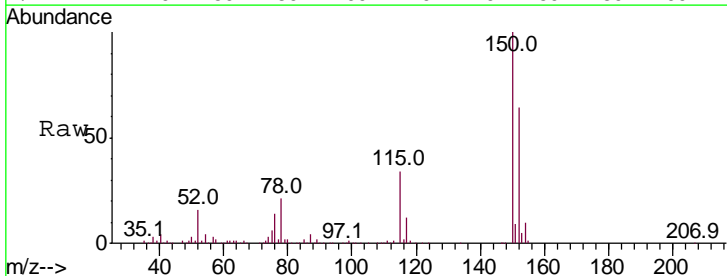
Instrument :  
 MSVOA\_W  
 ClientSampled :

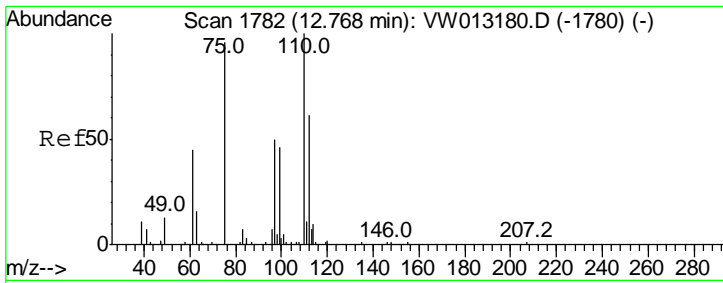
Tgt Ion	Resp	Lower	Upper
117	100		
82	56.1	45.9	68.9
119	32.2	26.2	39.2



#72  
 1,4-Dichlorobenzene-d4  
 Concen: 50.000 ug/l  
 RT: 13.56 min Scan# 1912  
 Delta R.T. -0.00 min  
 Lab File: VW013295.D  
 Acq: 25 Sep 2019 14:28

Tgt Ion	Resp	Lower	Upper
152	100		
115	55.6	27.3	81.9
150	157.1	0.0	349.0

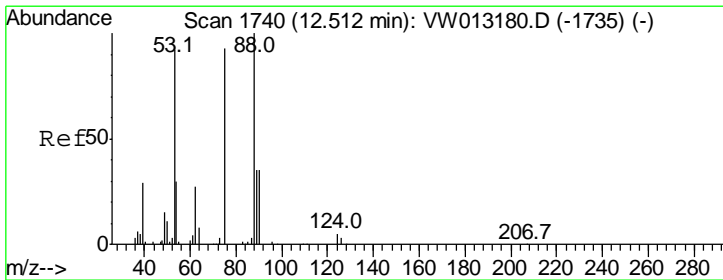
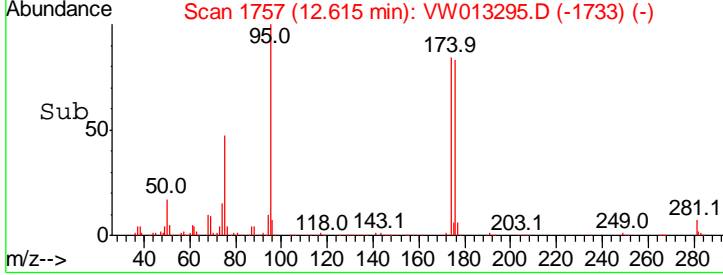
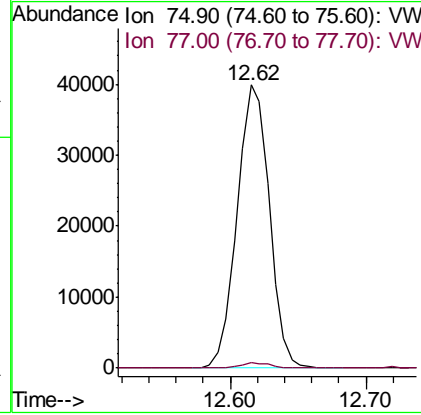
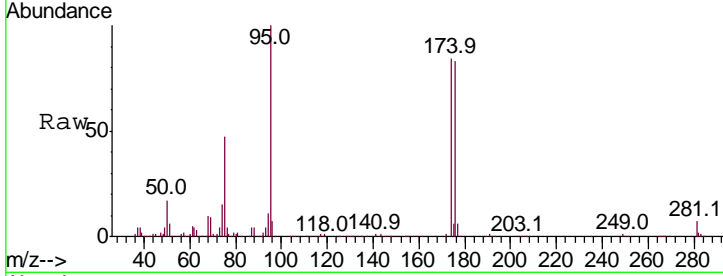




#76  
 1,2,3-Trichloropropane  
 Concen: 60.205 ug/l  
 RT: 12.62 min Scan# 1757  
 Delta R.T. -0.15 min  
 Lab File: VW013295.D  
 Acq: 25 Sep 2019 14:28

Instrument :  
 MSVOA\_W  
 ClientSampled :

Tgt Ion	Resp	Lower	Upper
75	100		
77	1.7	0.0	0.0#



#81  
 trans-1,4-Dichloro-2-butene  
 Concen: 135.095 ug/l  
 RT: 12.62 min Scan# 1757  
 Delta R.T. 0.10 min  
 Lab File: VW013295.D  
 Acq: 25 Sep 2019 14:28

Tgt Ion	Resp	Lower	Upper
75	100		
53	0.0	76.6	114.8#
89	0.1	33.5	50.3#

