

Data Path : Z:\VOASRV\HPCHEM1\MSVOA W\DATA\VW102620\  
 Data File : VW016999.D  
 Acq On : 26 Oct 2020 15:22  
 Operator : SY/VA  
 Sample : VIBLK  
 Misc : 5.00G/10ML/MSVOA W/SOIL  
 ALS Vial : 14 Sample Multiplier: 1

Instrument :  
 MSVOA\_W  
 ClientSampleId :  
 VIBLK25

Quant Time: Oct 27 08:25:35 2020  
 Quant Method : Z:\VOASRV\HPCHEM1\MSVOA\_W\METHOD\SOM2WLM102220S.M  
 Quant Title : VOC Analysis  
 QLast Update : Tue Oct 27 08:16:51 2020  
 Response via : Initial Calibration

Internal Standards	R.T.	QIon	Response	Conc	Units	Dev(Min)
1) 1,4-Difluorobenzene	8.85	114	528707	25.00	ug/L	0.00
28) Chlorobenzene-d5	11.63	117	500394	25.00	ug/L	0.00
60) 1,4-Dichlorobenzene-d4	13.56	152	244884	25.00	ug/L	0.00

System Monitoring Compounds

4) Vinyl Chloride-d3	2.35	65	124595	20.42	ug/L	0.00
Spiked Amount	25.000	Range	30 - 150	Recovery	=	81.68%
7) Chloroethane-d5	2.89	69	100507	21.26	ug/L	0.00
Spiked Amount	25.000	Range	30 - 150	Recovery	=	85.04%
10) 1,1-Dichloroethene-d2	4.03	63	187526	15.80	ug/L	0.00
Spiked Amount	25.000	Range	45 - 110	Recovery	=	63.20%
20) 2-Butanone-d5	7.08	46	79201	68.90	ug/L	0.00
Spiked Amount	50.000	Range	20 - 135	Recovery	=	137.80%#
24) Chloroform-d	7.65	84	279855	22.95	ug/L	0.00
Spiked Amount	25.000	Range	40 - 150	Recovery	=	91.80%
26) 1,2-Dichloroethane-d4	8.31	65	149598	26.07	ug/L	0.00
Spiked Amount	25.000	Range	70 - 130	Recovery	=	104.28%
29) Benzene-d6	8.27	84	580756	22.59	ug/L	0.00
Spiked Amount	25.000	Range	20 - 135	Recovery	=	90.36%
33) 1,2-Dichloropropane-d6	9.27	67	165942	23.92	ug/L	0.00
Spiked Amount	25.000	Range	70 - 120	Recovery	=	95.68%
37) Toluene-d8	10.33	98	553380	22.87	ug/L	0.00
Spiked Amount	25.000	Range	30 - 130	Recovery	=	91.48%
38) trans-1,3-Dichloropropene-	10.58	79	71307	24.22	ug/L	0.00
Spiked Amount	25.000	Range	30 - 135	Recovery	=	96.88%
39) 2-Hexanone-d5	10.93	63	66666	68.43	ug/L	0.00
Spiked Amount	50.000	Range	20 - 135	Recovery	=	136.86%#
48) 1,1,2,2-Tetrachloroethane-	12.69	84	152028	28.76	ug/L	0.00
Spiked Amount	25.000	Range	45 - 120	Recovery	=	115.04%
61) 1,2-Dichlorobenzene-d4	13.86	152	209652	24.36	ug/L	0.00
Spiked Amount	25.000	Range	75 - 120	Recovery	=	97.44%

Target Compounds

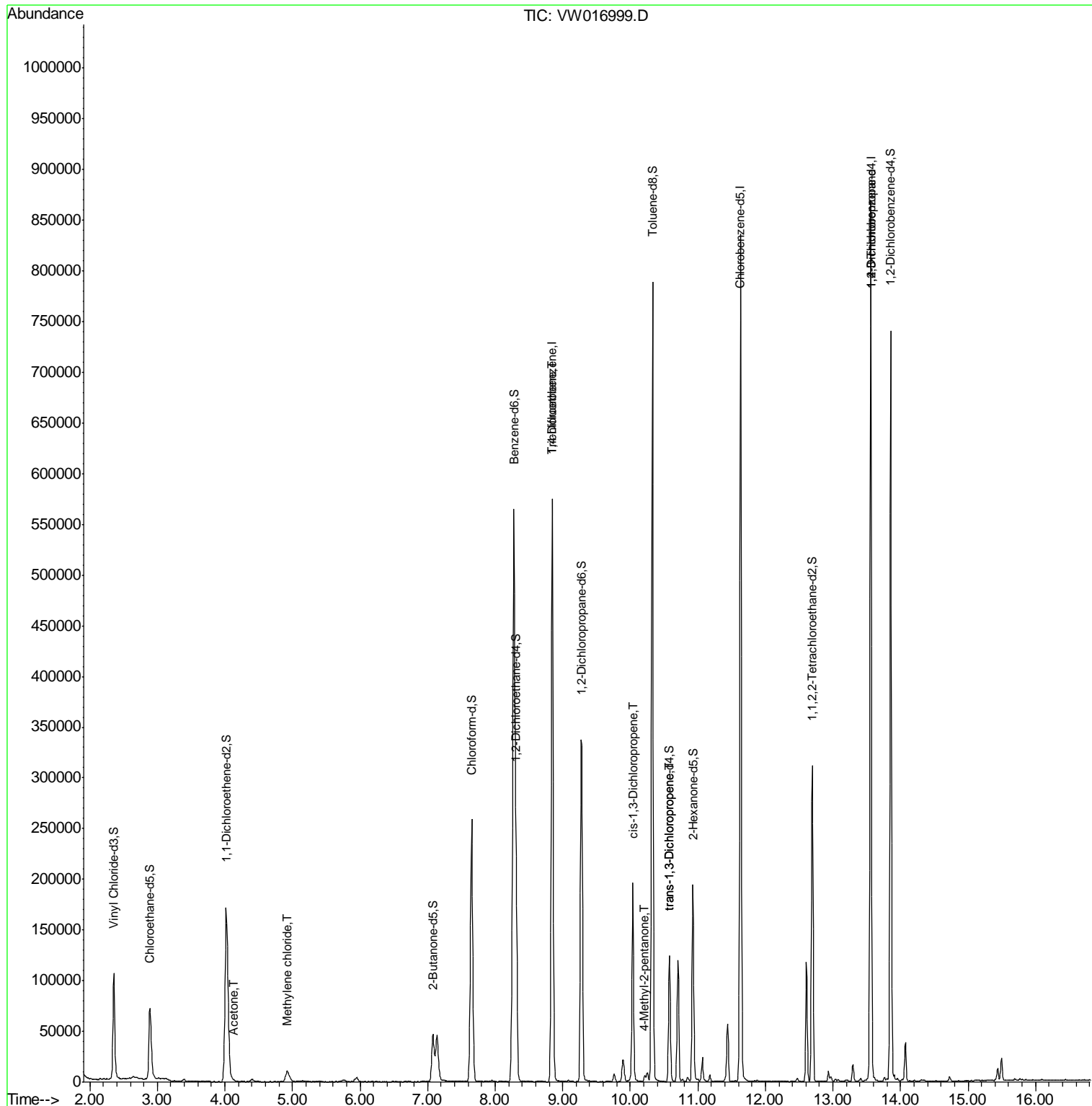
Target Compounds	R.T.	QIon	Response	Conc	Units	Ovalue
13) Acetone	4.13	43	1276	1.650	ug/L	55
16) Methylene chloride	4.93	84	10213	1.461	ug/L	89
35) Trichloroethene	8.85	95	14822	1.936	ug/L #	1
42) cis-1,3-Dichloropropene	10.04	75	4844	0.502	ug/L #	74
43) 4-Methyl-2-pentanone	10.21	43	3923	1.341	ug/L	96
45) trans-1,3-Dichloropropene	10.58	75	3100	0.388	ug/L	99
59) 1,2,3-Trichloropropane	13.56	75	24984	6.582	ug/L	91

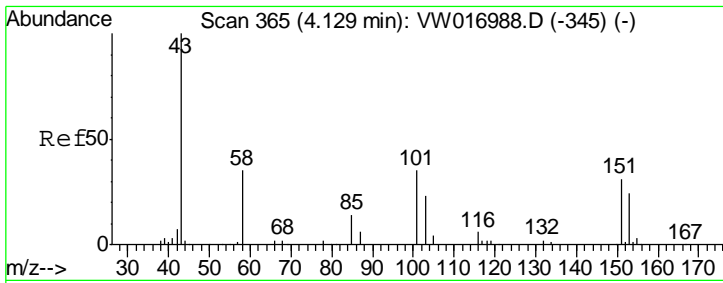
(#) = qualifier out of range (m) = manual integration (+) = signals summed

Data Path : Z:\VOASRV\HPCHEM1\MSVOA W\DATA\VW102620\  
 Data File : VW016999.D  
 Acq On : 26 Oct 2020 15:22  
 Operator : SY/VA  
 Sample : VIBLK  
 Misc : 5.00G/10ML/MSVOA W/SOIL  
 ALS Vial : 14 Sample Multiplier: 1

Instrument :  
 MSVOA\_W  
 ClientSampled :  
 VIBLK25

Quant Time: Oct 27 08:25:35 2020  
 Quant Method : Z:\VOASRV\HPCHEM1\MSVOA\_W\METHOD\SOM2WLM102220S.M  
 Quant Title : VOC Analysis  
 QLast Update : Tue Oct 27 08:16:51 2020  
 Response via : Initial Calibration

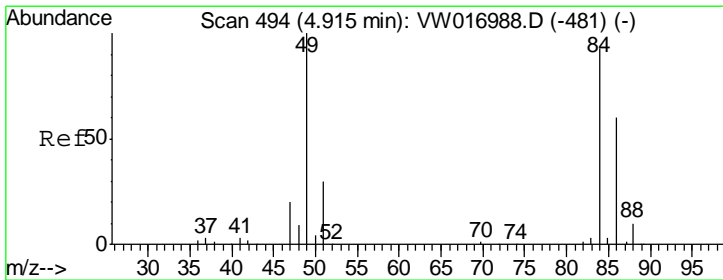
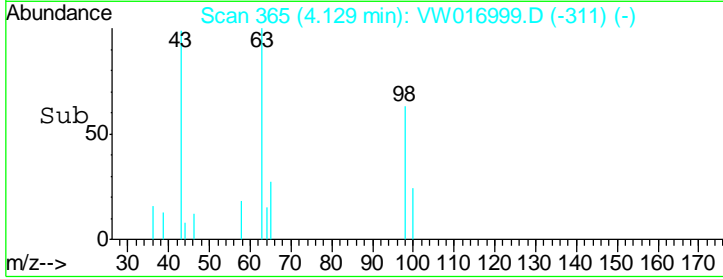
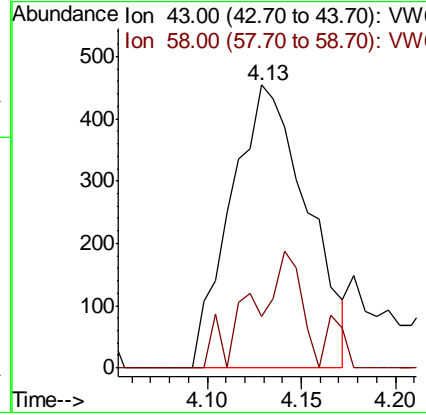
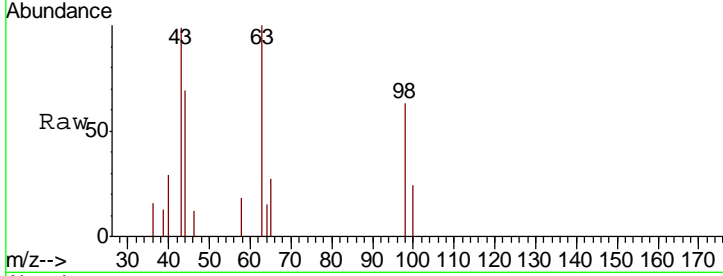




#13  
 Acetone  
 Concen: 1.650 ug/L  
 RT: 4.13 min Scan# 365  
 Delta R.T. -0.00 min  
 Lab File: VW016999.D  
 Acq: 26 Oct 2020 15:22

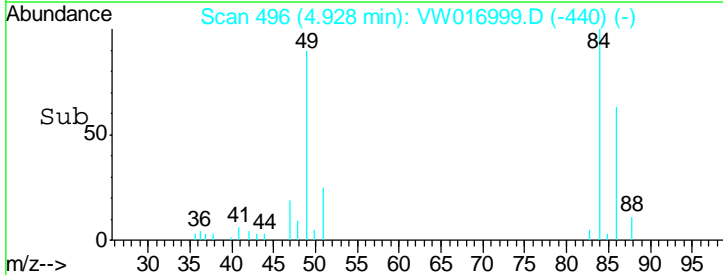
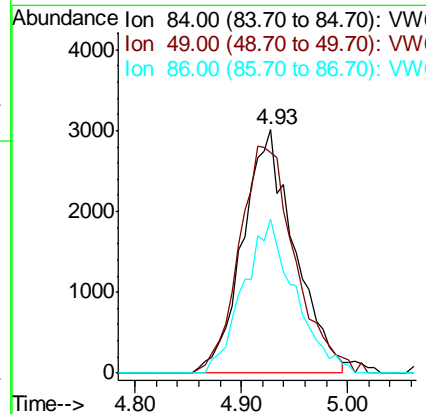
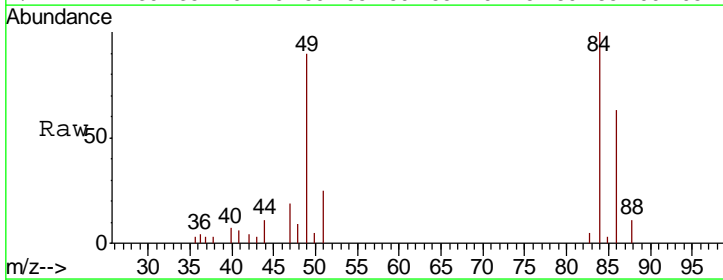
Instrument :  
 MSVOA\_W  
 ClientSampled :  
 VIBLK25

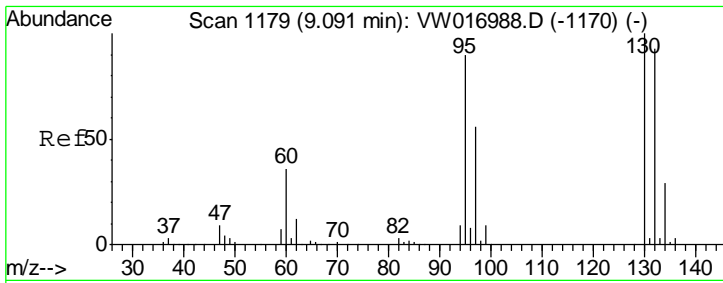
Tgt Ion	Resp	Lower	Upper
43	1276		
58	8.9	0.0	69.8



#16  
 Methylene chloride  
 Concen: 1.461 ug/L  
 RT: 4.93 min Scan# 496  
 Delta R.T. 0.01 min  
 Lab File: VW016999.D  
 Acq: 26 Oct 2020 15:22

Tgt Ion	Resp	Lower	Upper
84	10213		
49	90.4	73.8	137.0
86	63.0	47.4	88.0

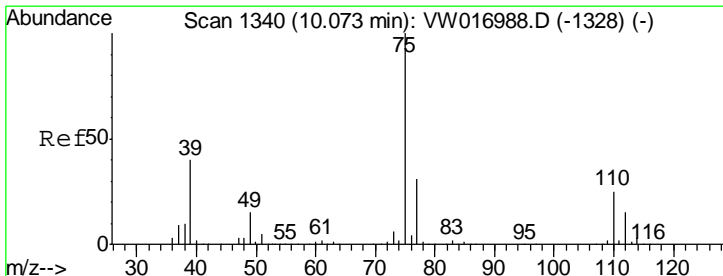
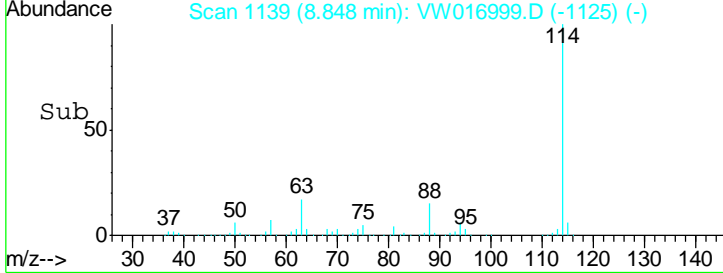
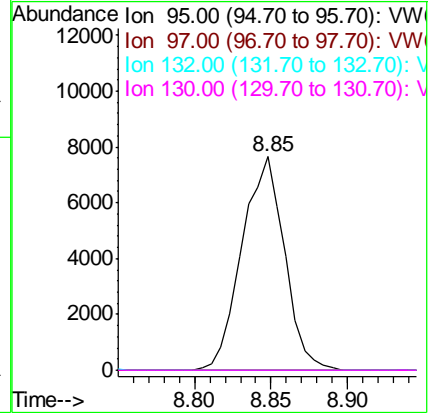
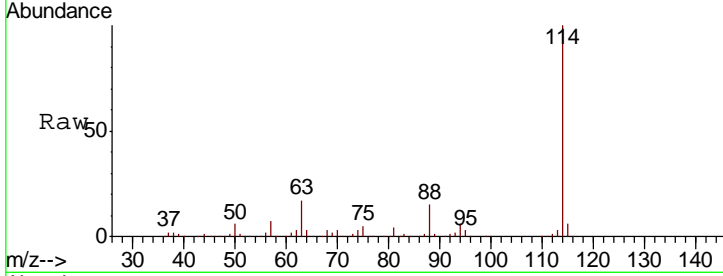




#35  
 Trichloroethene  
 Concen: 1.936 ug/L  
 RT: 8.85 min Scan# 1139  
 Delta R.T. -0.24 min  
 Lab File: VW016999.D  
 Acq: 26 Oct 2020 15:22

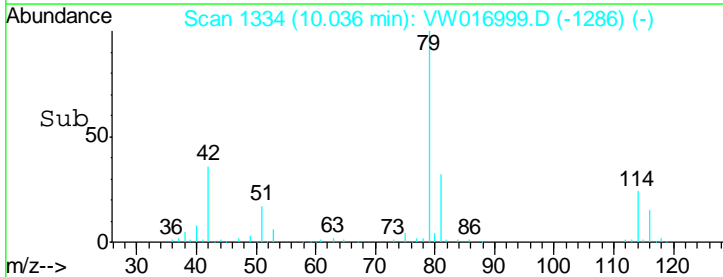
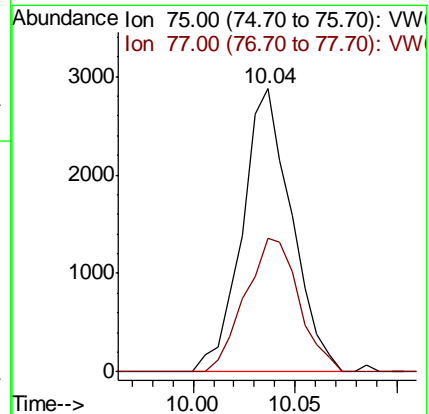
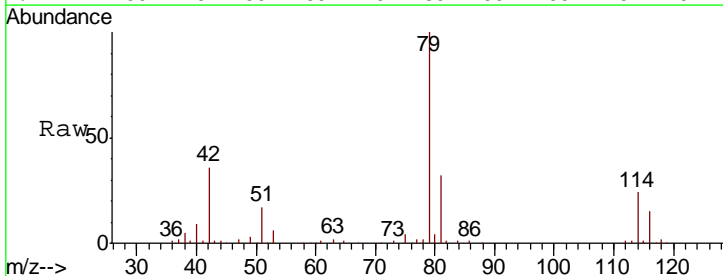
Instrument :  
 MSVOA\_W  
 ClientSampled :  
 VIBLK25

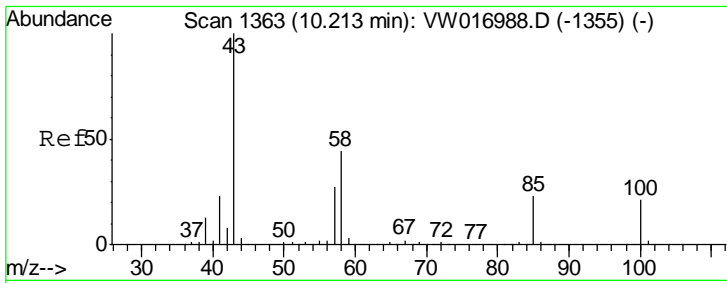
Tgt Ion	Resp	Lower	Upper
95	14822		
97	0.0	46.0	85.4#
132	0.0	73.9	137.3#
130	0.0	77.6	144.2#



#42  
 cis-1,3-Dichloropropene  
 Concen: 0.502 ug/L  
 RT: 10.04 min Scan# 1334  
 Delta R.T. -0.04 min  
 Lab File: VW016999.D  
 Acq: 26 Oct 2020 15:22

Tgt Ion	Resp	Lower	Upper
75	4844		
77	47.0	22.7	42.1#

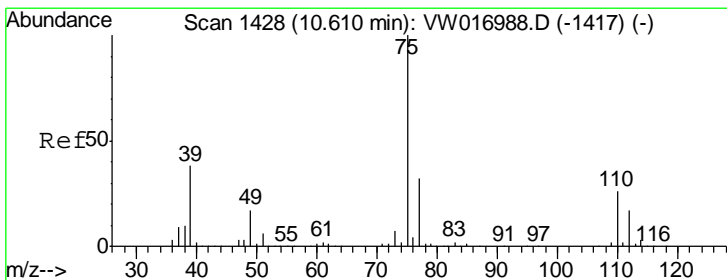
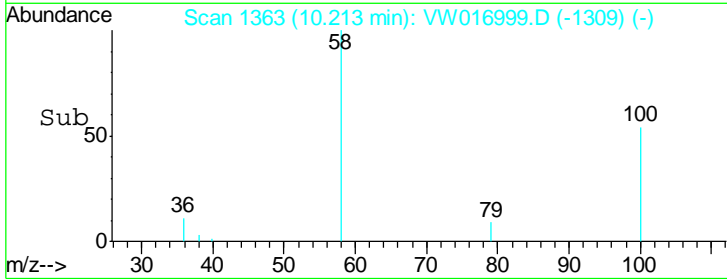
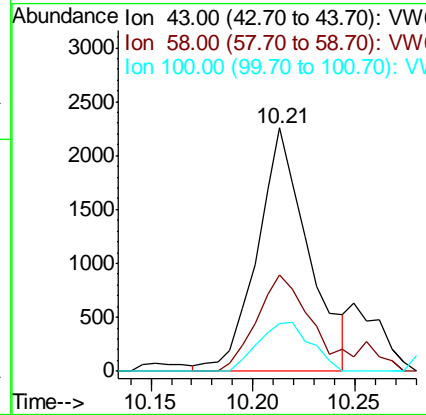
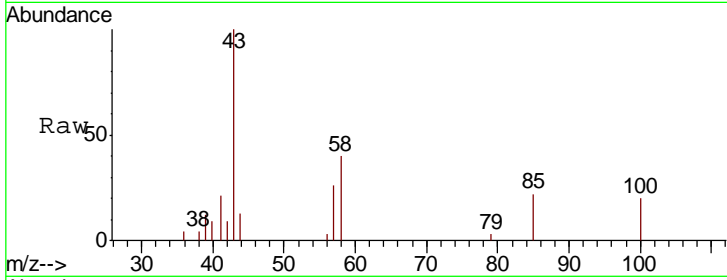




#43  
 4-Methyl-2-pentanone  
 Concen: 1.341 ug/L  
 RT: 10.21 min Scan# 1363  
 Delta R.T. -0.00 min  
 Lab File: VW016999.D  
 Acq: 26 Oct 2020 15:22

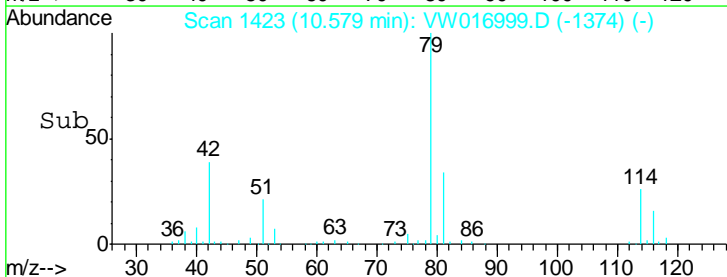
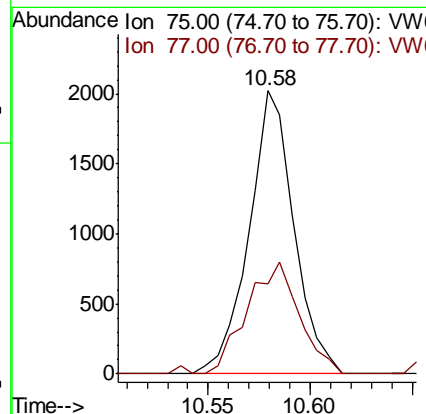
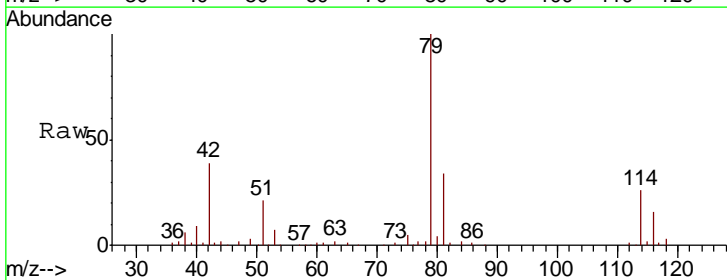
Instrument :  
 MSVOA\_W  
 ClientSampled :  
 VIBLK25

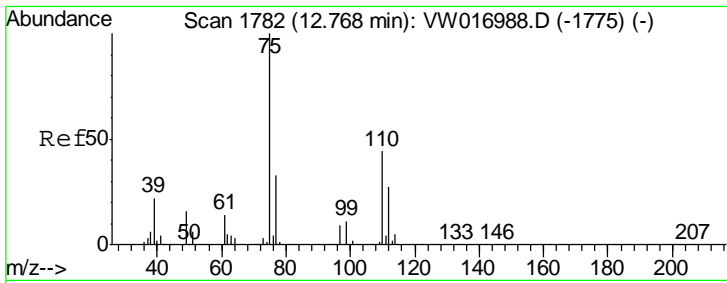
Tgt Ion	Resp	Lower	Upper
43	100		
58	39.6	34.4	51.6
100	20.7	16.2	24.2



#45  
 trans-1,3-Dichloropropene  
 Concen: 0.388 ug/L  
 RT: 10.58 min Scan# 1423  
 Delta R.T. -0.03 min  
 Lab File: VW016999.D  
 Acq: 26 Oct 2020 15:22

Tgt Ion	Resp	Lower	Upper
75	100		
77	31.7	22.7	42.3





#59  
 1,2,3-Trichloropropane  
 Concen: 6.582 ug/L  
 RT: 13.56 min Scan# 1912  
 Delta R.T. 0.79 min  
 Lab File: VW016999.D  
 Acq: 26 Oct 2020 15:22

Instrument :  
 MSVOA\_W  
 ClientSampled :  
 VIBLK25

Tot Ion: 75 Resp: 24984  
 Ion Ratio Lower Upper  
 75 100  
 77 37.1 25.8 38.8

