

Data Path : Z:\VOASRV\HPCHEM1\MSVOA W\DATA\VW102820\  
 Data File : VW017007.D  
 Acq On : 28 Oct 2020 12:35  
 Operator : SY/VA  
 Sample : VIBLK  
 Misc : 5.00G/10ML/MSVOA W/SOIL  
 ALS Vial : 6 Sample Multiplier: 1

Instrument :  
 MSVOA\_W  
 ClientSampleId :

Quant Time: Oct 29 08:08:39 2020  
 Quant Method : Z:\VOASRV\HPCHEM1\MSVOA\_W\METHOD\SOM2WLM102220S.M  
 Quant Title : VOC Analysis  
 QLast Update : Thu Oct 29 08:01:00 2020  
 Response via : Initial Calibration

Internal Standards	R.T.	QIon	Response	Conc	Units	Dev(Min)
1) 1,4-Difluorobenzene	8.85	114	579102	25.00	ug/L	0.00
28) Chlorobenzene-d5	11.63	117	541839	25.00	ug/L	0.00
60) 1,4-Dichlorobenzene-d4	13.56	152	267839	25.00	ug/L	0.00

## System Monitoring Compounds

4) Vinyl Chloride-d3	2.36	65	125433	18.77	ug/L	0.00
Spiked Amount	25.000	Range	30 - 150	Recovery	=	75.08%
7) Chloroethane-d5	2.89	69	103234	19.93	ug/L	0.00
Spiked Amount	25.000	Range	30 - 150	Recovery	=	79.72%
10) 1,1-Dichloroethene-d2	4.03	63	190546	14.66	ug/L	0.00
Spiked Amount	25.000	Range	45 - 110	Recovery	=	58.64%
20) 2-Butanone-d5	7.08	46	78367	62.25	ug/L	0.00
Spiked Amount	50.000	Range	20 - 135	Recovery	=	124.50%
24) Chloroform-d	7.65	84	293197	21.95	ug/L	0.00
Spiked Amount	25.000	Range	40 - 150	Recovery	=	87.80%
26) 1,2-Dichloroethane-d4	8.31	65	155126	24.68	ug/L	0.00
Spiked Amount	25.000	Range	70 - 130	Recovery	=	98.72%
29) Benzene-d6	8.27	84	596516	21.43	ug/L	0.00
Spiked Amount	25.000	Range	20 - 135	Recovery	=	85.72%
33) 1,2-Dichloropropane-d6	9.28	67	173360	23.08	ug/L	0.00
Spiked Amount	25.000	Range	70 - 120	Recovery	=	92.32%
37) Toluene-d8	10.33	98	564521	21.54	ug/L	0.00
Spiked Amount	25.000	Range	30 - 130	Recovery	=	86.16%
38) trans-1,3-Dichloropropene-	10.58	79	74204	23.27	ug/L	0.00
Spiked Amount	25.000	Range	30 - 135	Recovery	=	93.08%
39) 2-Hexanone-d5	10.93	63	65982	62.55	ug/L	0.00
Spiked Amount	50.000	Range	20 - 135	Recovery	=	125.10%
48) 1,1,2,2-Tetrachloroethane-	12.69	84	156325	27.32	ug/L	0.00
Spiked Amount	25.000	Range	45 - 120	Recovery	=	109.28%
61) 1,2-Dichlorobenzene-d4	13.85	152	215510	22.89	ug/L	0.00
Spiked Amount	25.000	Range	75 - 120	Recovery	=	91.56%

## Target Compounds

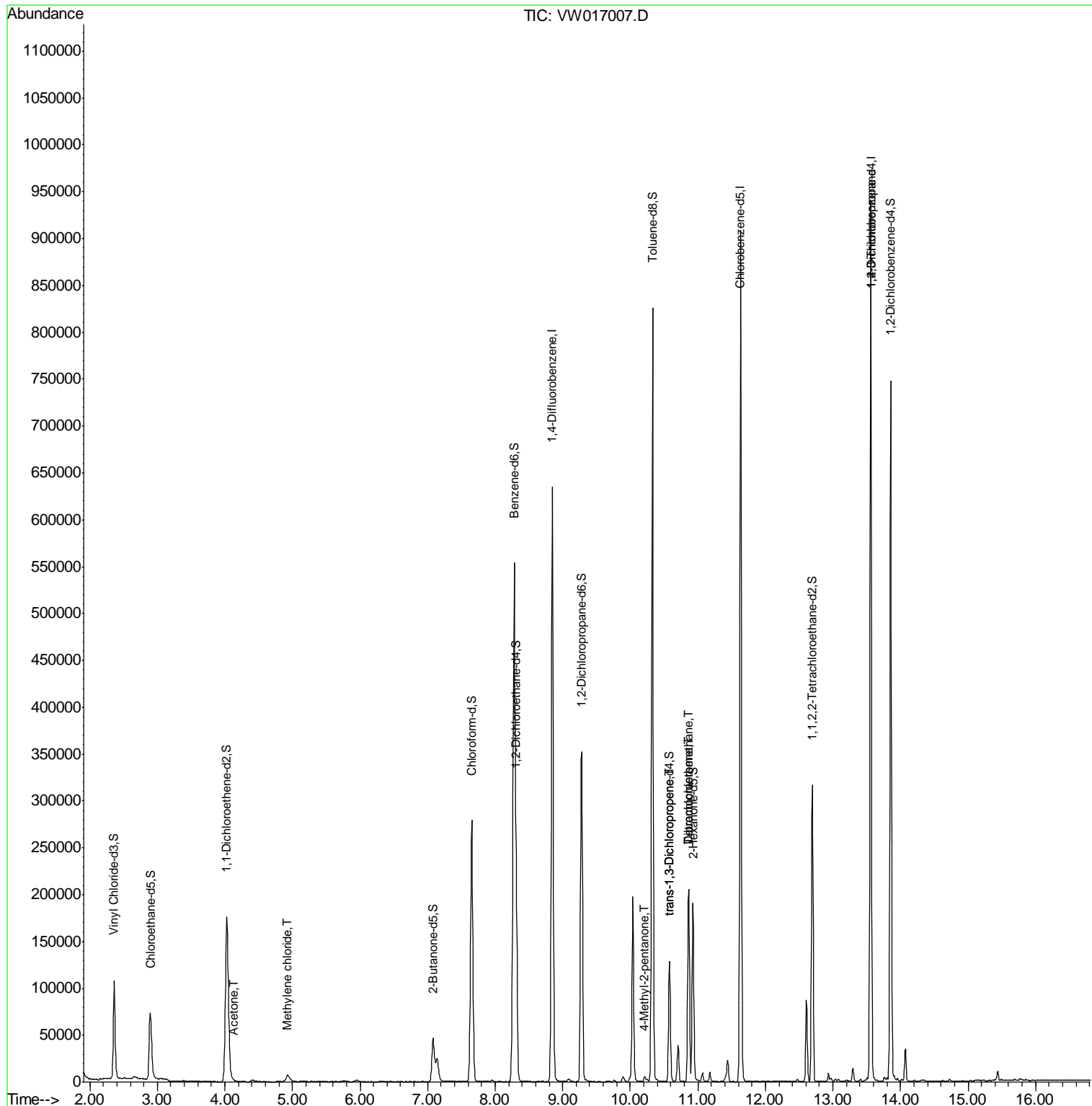
Target Compounds	R.T.	QIon	Response	Conc	Units	Ovalue
13) Acetone	4.14	43	1155	1.363	ug/L	80
16) Methylene chloride	4.93	84	6386	0.834	ug/L	88
43) 4-Methyl-2-pentanone	10.22	43	4172	1.317	ug/L	95
45) trans-1,3-Dichloropropene	10.58	75	3261	0.377	ug/L	90
47) Tetrachloroethene	10.87	164	50881	6.672	ug/L	97
50) Dibromochloromethane	10.87	129	45948	7.049	ug/L #	10
59) 1,2,3-Trichloropropane	13.56	75	26372	6.417	ug/L	92

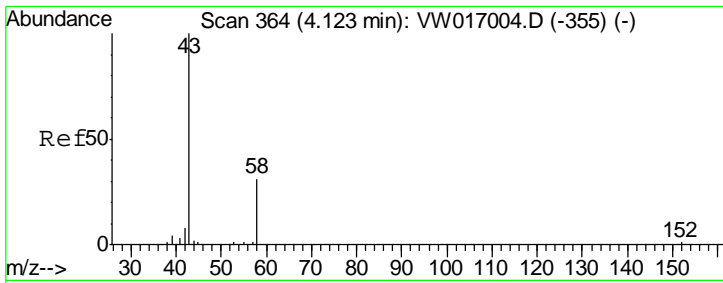
(#) = qualifier out of range (m) = manual integration (+) = signals summed

Data Path : Z:\VOASRV\HPCHEM1\MSVOA W\DATA\VW102820\  
 Data File : VW017007.D  
 Acq On : 28 Oct 2020 12:35  
 Operator : SY/VA  
 Sample : VIBLK  
 Misc : 5.00G/10ML/MSVOA W/SOIL  
 ALS Vial : 6 Sample Multiplier: 1

Instrument :  
 MSVOA\_W  
 ClientSampled :

Quant Time: Oct 29 08:08:39 2020  
 Quant Method : Z:\VOASRV\HPCHEM1\MSVOA\_W\METHOD\SOM2WLM102220S.M  
 Quant Title : VOC Analysis  
 QLast Update : Thu Oct 29 08:01:00 2020  
 Response via : Initial Calibration

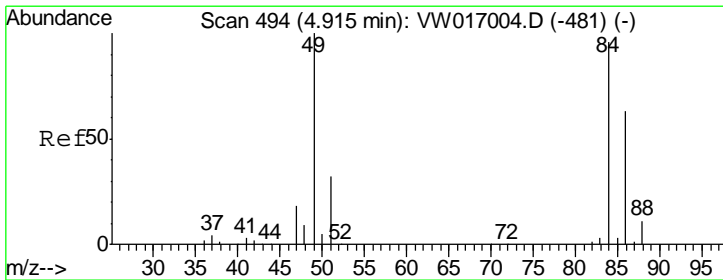
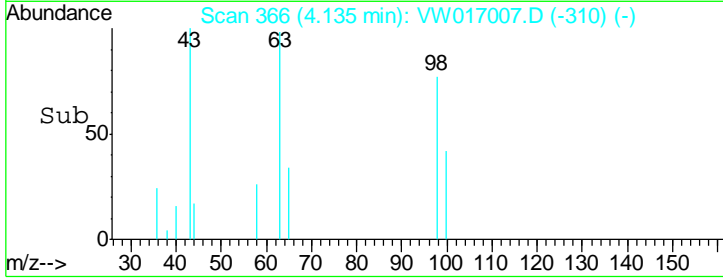
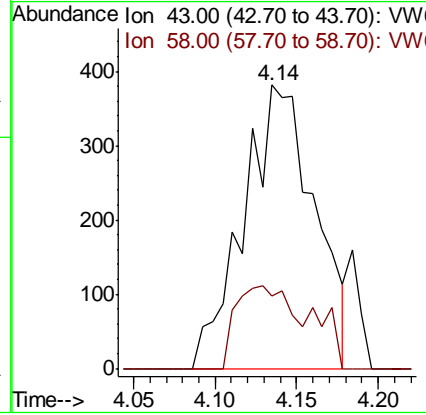
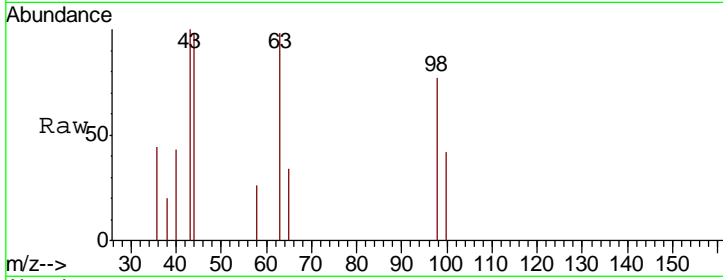




#13  
 Acetone  
 Concen: 1.363 ug/L  
 RT: 4.14 min Scan# 366  
 Delta R.T. 0.01 min  
 Lab File: VW017007.D  
 Acq: 28 Oct 2020 12:35

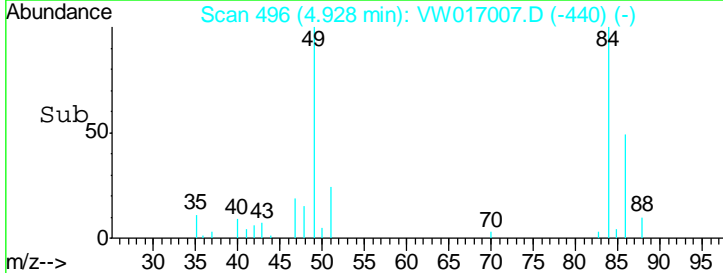
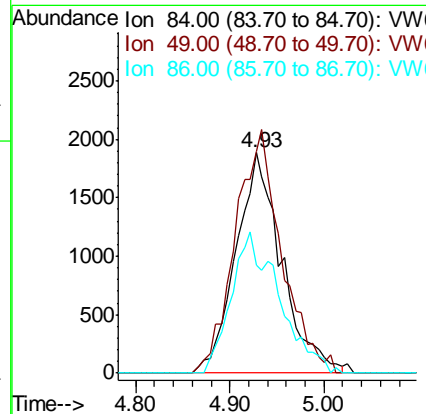
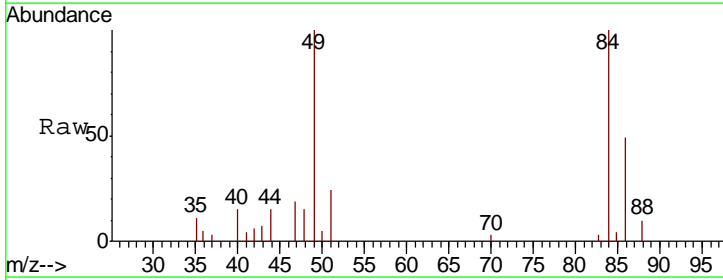
Instrument :  
 MSVOA\_W  
 ClientSampled :

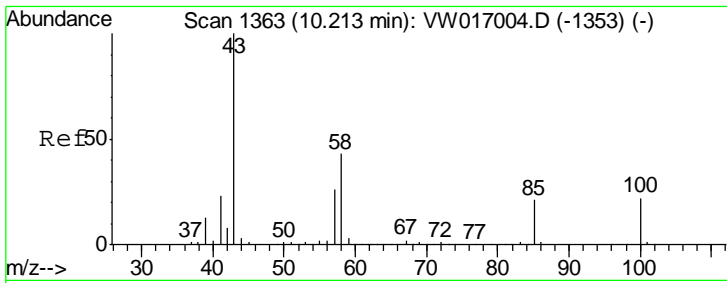
Tgt Ion: 43 Resp: 1155  
 Ion Ratio Lower Upper  
 43 100  
 58 23.0 0.0 69.8



#16  
 Methylene chloride  
 Concen: 0.834 ug/L  
 RT: 4.93 min Scan# 496  
 Delta R.T. 0.01 min  
 Lab File: VW017007.D  
 Acq: 28 Oct 2020 12:35

Tgt Ion: 84 Resp: 6386  
 Ion Ratio Lower Upper  
 84 100  
 49 100.4 73.8 137.0  
 86 48.9 47.4 88.0

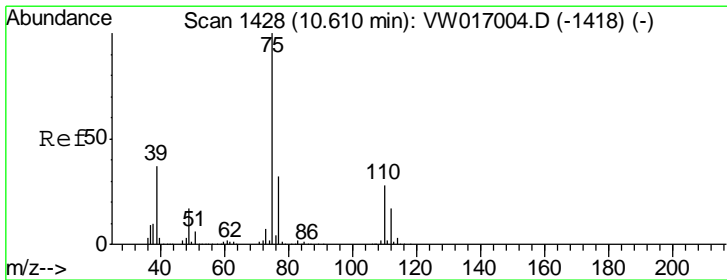
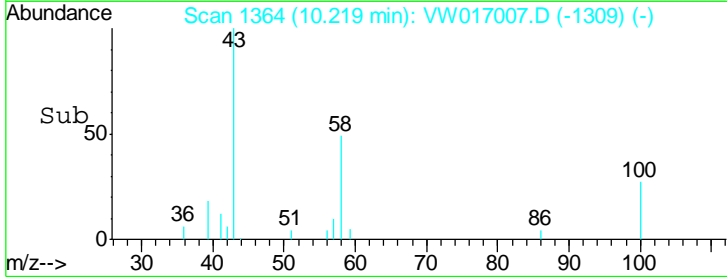
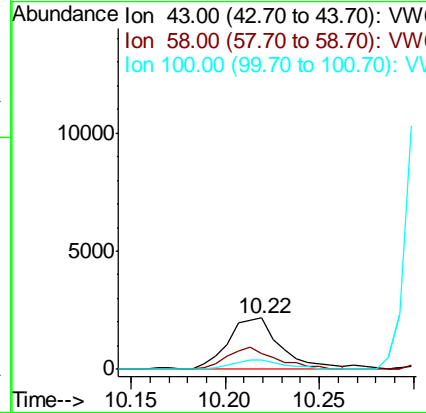
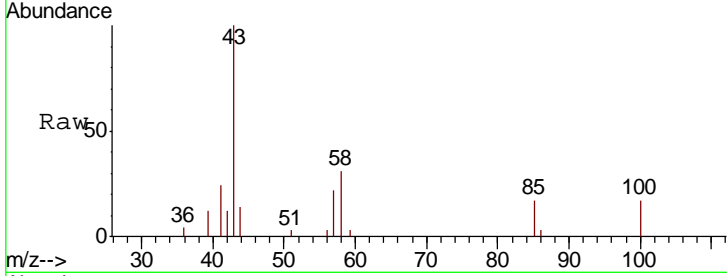




#43  
 4-Methyl-2-pentanone  
 Concen: 1.317 ug/L  
 RT: 10.22 min Scan# 1364  
 Delta R.T. 0.01 min  
 Lab File: VW017007.D  
 Acq: 28 Oct 2020 12:35

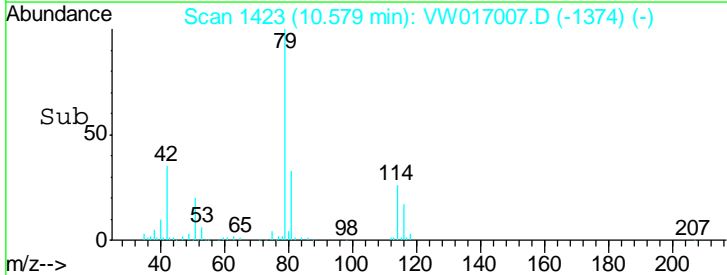
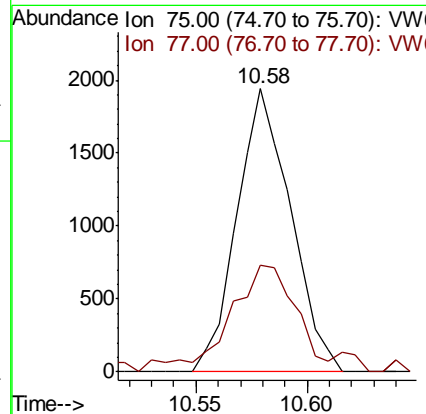
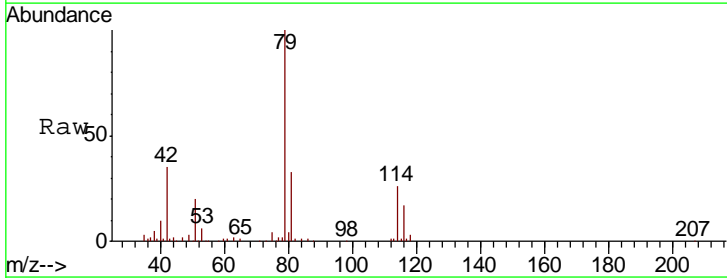
Instrument : MSVOA\_W  
 ClientSampled :

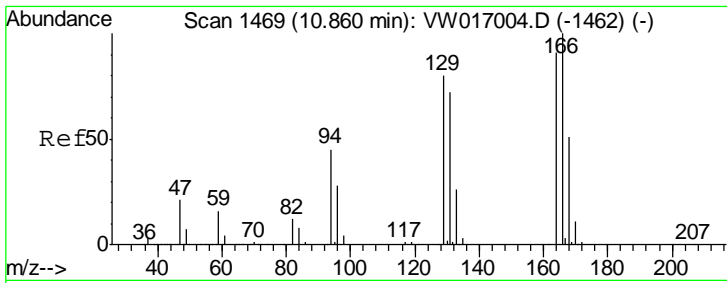
Tgt Ion	Resp	Lower	Upper
43	100		
58	40.0	34.4	51.6
100	17.9	16.2	24.2



#45  
 trans-1,3-Dichloropropene  
 Concen: 0.377 ug/L  
 RT: 10.58 min Scan# 1423  
 Delta R.T. -0.03 min  
 Lab File: VW017007.D  
 Acq: 28 Oct 2020 12:35

Tgt Ion	Resp	Lower	Upper
75	100		
77	37.9	22.7	42.3

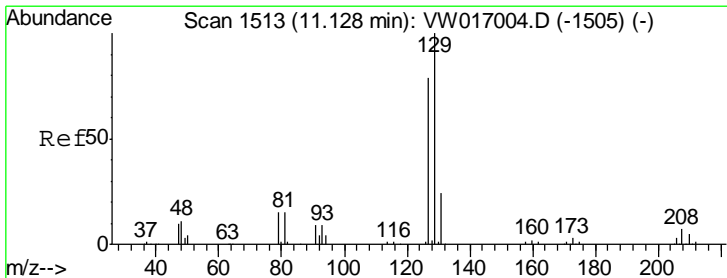
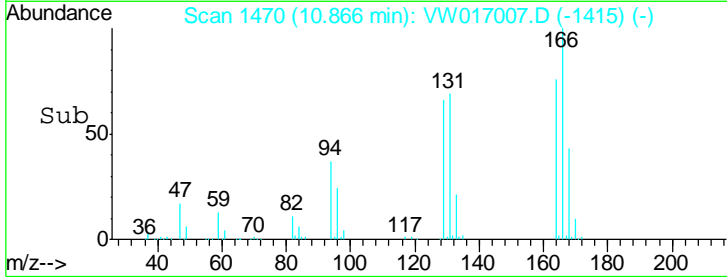
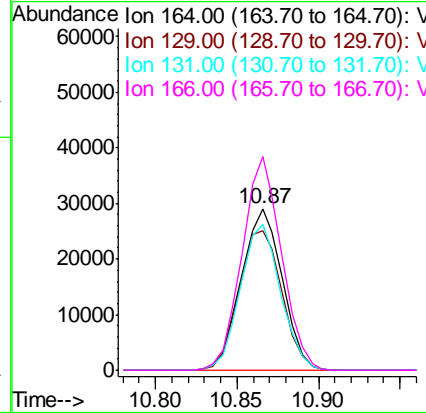
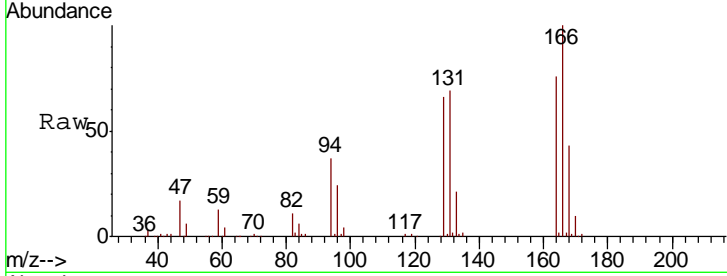




#47  
 Tetrachloroethene  
 Concen: 6.672 ug/L  
 RT: 10.87 min Scan# 1470  
 Delta R.T. 0.01 min  
 Lab File: VW017007.D  
 Acq: 28 Oct 2020 12:35

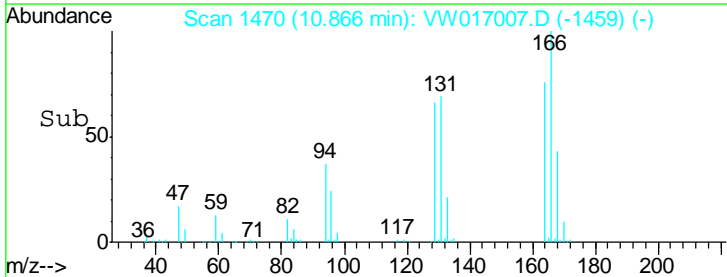
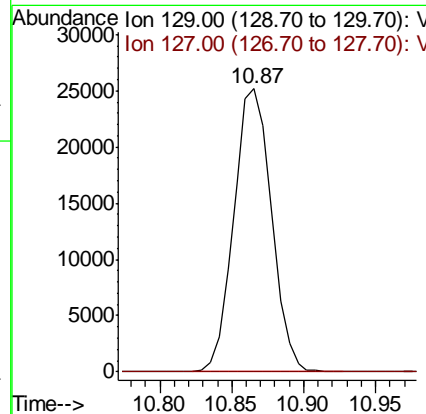
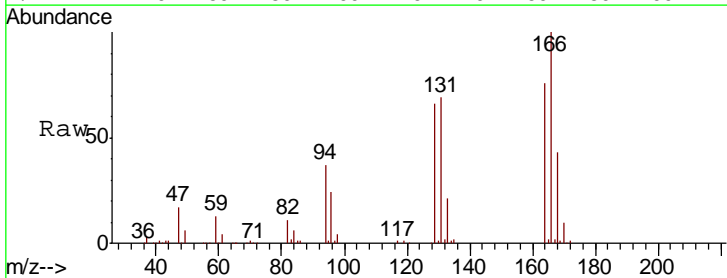
Instrument :  
 MSVOA\_W  
 Client Sampled :

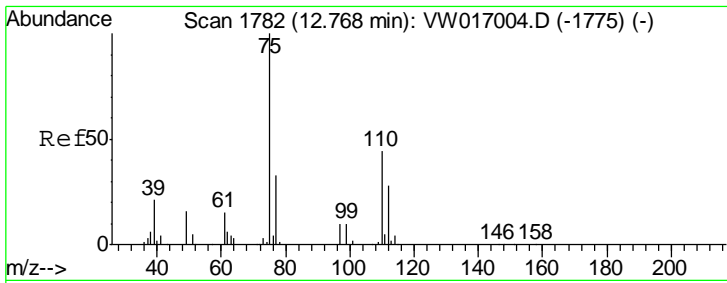
Tgt Ion	Resp	Lower	Upper
164	100		
129	86.7	64.0	119.0
131	90.8	61.7	114.5
166	132.4	94.6	175.8



#50  
 Dibromochloromethane  
 Concen: 7.049 ug/L  
 RT: 10.87 min Scan# 1470  
 Delta R.T. -0.26 min  
 Lab File: VW017007.D  
 Acq: 28 Oct 2020 12:35

Tgt Ion	Resp	Lower	Upper
129	100		
127	0.4	55.4	102.8#





#59  
 1,2,3-Trichloropropane  
 Concen: 6.417 ug/L  
 RT: 13.56 min Scan# 1912  
 Delta R.T. 0.79 min  
 Lab File: VW017007.D  
 Acq: 28 Oct 2020 12:35

Instrument :  
 MSVOA\_W  
 ClientSampled :

Tot Ion: 75 Resp: 26372  
 Ion Ratio Lower Upper  
 75 100  
 77 36.6 25.8 38.8

