

Data Path : Z:\VOASRV\HPCHEM1\MSVOA W\DATA\VW102820\  
 Data File : VW017010.D  
 Acq On : 28 Oct 2020 13:46  
 Operator : SY/VA  
 Sample : VIBLK  
 Misc : 5.00G/10ML/MSVOA W/SOIL  
 ALS Vial : 9 Sample Multiplier: 1

Instrument :  
 MSVOA\_W  
 ClientSampleId :

Quant Time: Oct 29 08:09:08 2020  
 Quant Method : Z:\VOASRV\HPCHEM1\MSVOA\_W\METHOD\SOM2WLM102220S.M  
 Quant Title : VOC Analysis  
 QLast Update : Thu Oct 29 08:01:00 2020  
 Response via : Initial Calibration

Internal Standards	R.T.	QIon	Response	Conc	Units	Dev(Min)
1) 1,4-Difluorobenzene	8.85	114	519914	25.00	ug/L	0.00
28) Chlorobenzene-d5	11.63	117	484011	25.00	ug/L	0.00
60) 1,4-Dichlorobenzene-d4	13.56	152	229028	25.00	ug/L	0.00

## System Monitoring Compounds

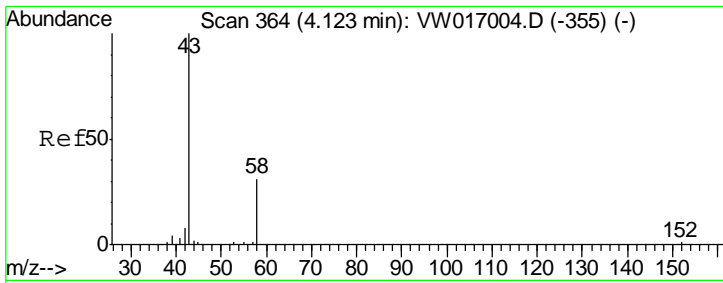
4) Vinyl Chloride-d3	2.36	65	122359	20.39	ug/L	0.00
Spiked Amount	25.000	Range	30 - 150	Recovery	=	81.56%
7) Chloroethane-d5	2.89	69	101863	21.91	ug/L	0.00
Spiked Amount	25.000	Range	30 - 150	Recovery	=	87.64%
10) 1,1-Dichloroethene-d2	4.02	63	189178	16.21	ug/L	0.00
Spiked Amount	25.000	Range	45 - 110	Recovery	=	64.84%
20) 2-Butanone-d5	7.08	46	78902	69.80	ug/L	0.00
Spiked Amount	50.000	Range	20 - 135	Recovery	=	139.60%#
24) Chloroform-d	7.65	84	291421	24.30	ug/L	0.00
Spiked Amount	25.000	Range	40 - 150	Recovery	=	97.20%
26) 1,2-Dichloroethane-d4	8.31	65	153206	27.15	ug/L	0.00
Spiked Amount	25.000	Range	70 - 130	Recovery	=	108.60%
29) Benzene-d6	8.27	84	602538	24.23	ug/L	0.00
Spiked Amount	25.000	Range	20 - 135	Recovery	=	96.92%
33) 1,2-Dichloropropane-d6	9.27	67	170272	25.37	ug/L	0.00
Spiked Amount	25.000	Range	70 - 120	Recovery	=	101.48%
37) Toluene-d8	10.33	98	570801	24.39	ug/L	0.00
Spiked Amount	25.000	Range	30 - 130	Recovery	=	97.56%
38) trans-1,3-Dichloropropene-	10.58	79	74816	26.27	ug/L	0.00
Spiked Amount	25.000	Range	30 - 135	Recovery	=	105.08%
39) 2-Hexanone-d5	10.93	63	64956	68.93	ug/L	0.00
Spiked Amount	50.000	Range	20 - 135	Recovery	=	137.86%#
48) 1,1,2,2-Tetrachloroethane-	12.69	84	153510	30.03	ug/L	0.00
Spiked Amount	25.000	Range	45 - 120	Recovery	=	120.12%#
61) 1,2-Dichlorobenzene-d4	13.85	152	212729	26.43	ug/L	0.00
Spiked Amount	25.000	Range	75 - 120	Recovery	=	105.72%

## Target Compounds

Target Compounds	R.T.	QIon	Response	Conc	Units	Ovalue
13) Acetone	4.14	43	502	0.660	ug/L	62
16) Methylene chloride	4.93	84	6422	0.934	ug/L	99
40) 1,2-Dichloropropane	9.27	63	18365	3.075	ug/L #	85
42) cis-1,3-Dichloropropene	10.04	75	4845	0.519	ug/L #	69
43) 4-Methyl-2-pentanone	10.21	43	4572	1.615	ug/L	96
45) trans-1,3-Dichloropropene	10.59	75	3238	0.419	ug/L	88
47) Tetrachloroethene	10.87	164	51881	7.616	ug/L	97
59) 1,2,3-Trichloropropane	13.56	75	23501	6.401	ug/L	93

(#) = qualifier out of range (m) = manual integration (+) = signals summed

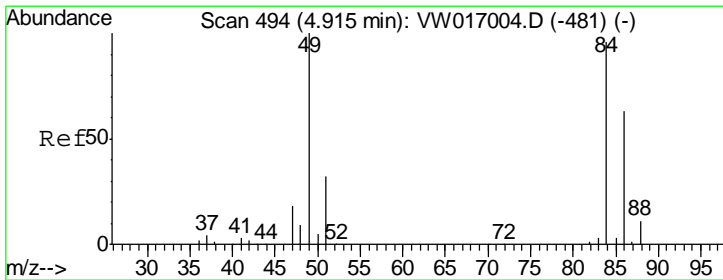
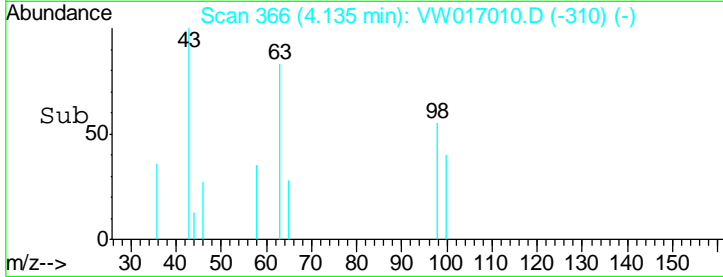
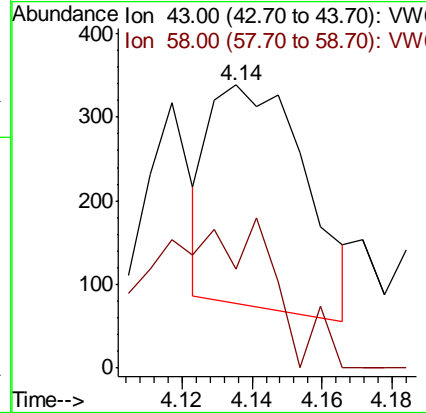
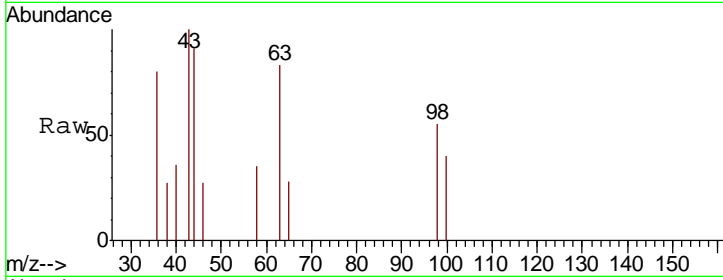




#13  
 Acetone  
 Concen: 0.660 ug/L  
 RT: 4.14 min Scan# 366  
 Delta R.T. 0.01 min  
 Lab File: VW017010.D  
 Acq: 28 Oct 2020 13:46

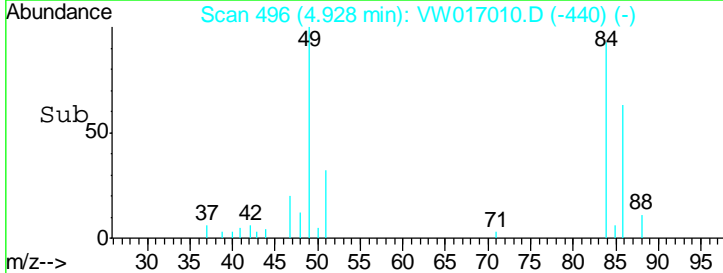
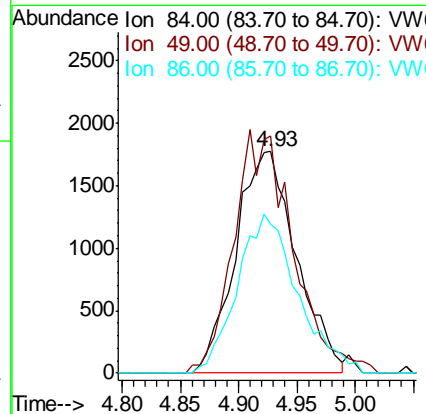
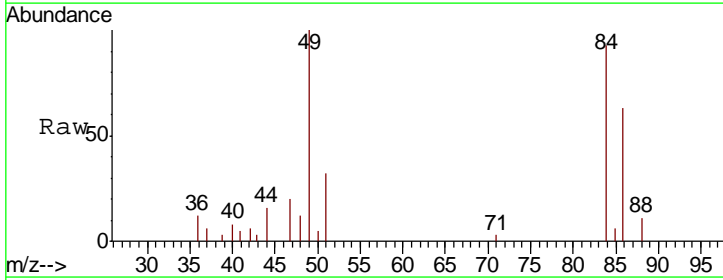
Instrument :  
 MSVOA\_W  
 ClientSampled :

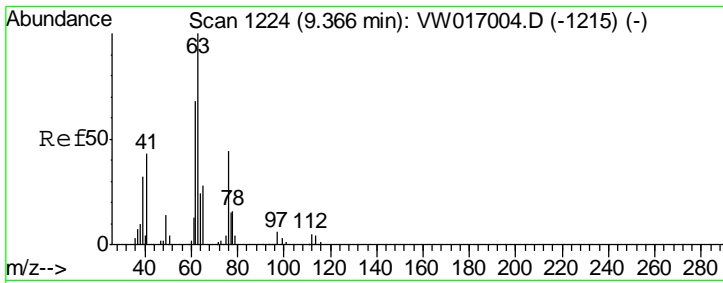
Tgt Ion	Resp	Lower	Upper
43	100		
58	57.0	0.0	69.8



#16  
 Methylene chloride  
 Concen: 0.934 ug/L  
 RT: 4.93 min Scan# 496  
 Delta R.T. 0.01 min  
 Lab File: VW017010.D  
 Acq: 28 Oct 2020 13:46

Tgt Ion	Resp	Lower	Upper
84	100		
49	107.0	73.8	137.0
86	67.4	47.4	88.0

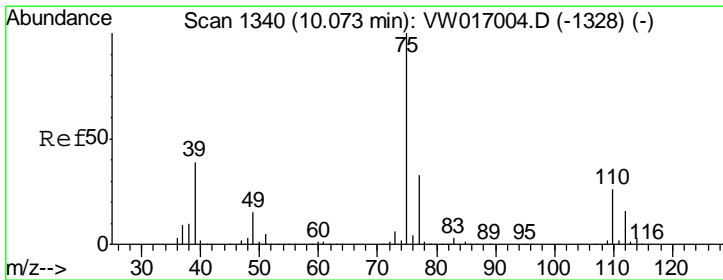
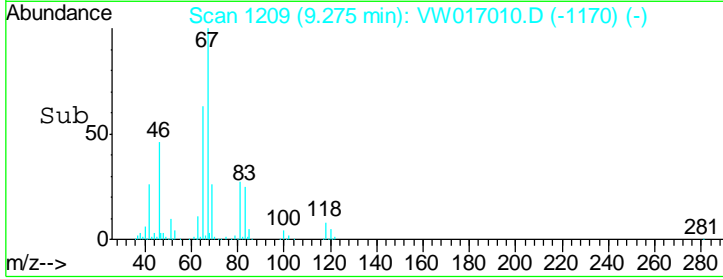
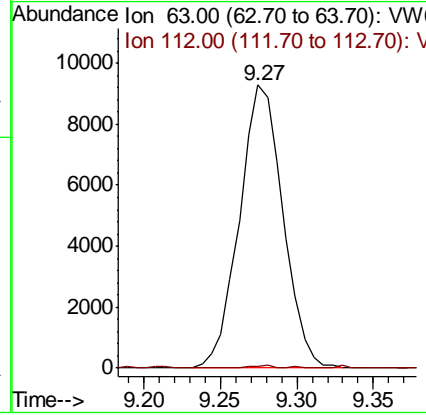
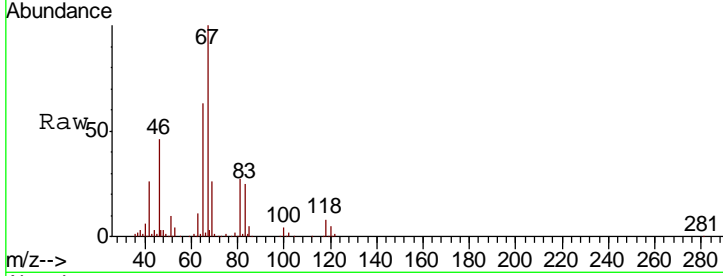




#40  
 1,2-Dichloropropane  
 Concen: 3.075 ug/L  
 RT: 9.27 min Scan# 1209  
 Delta R.T. -0.09 min  
 Lab File: VW017010.D  
 Acq: 28 Oct 2020 13:46

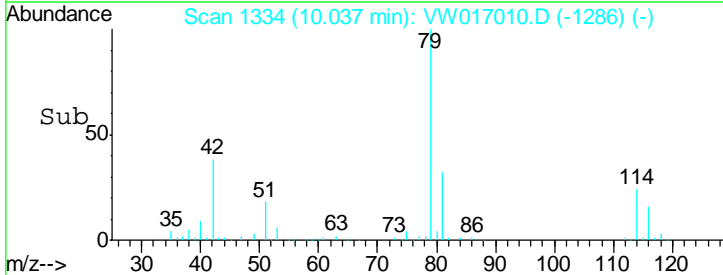
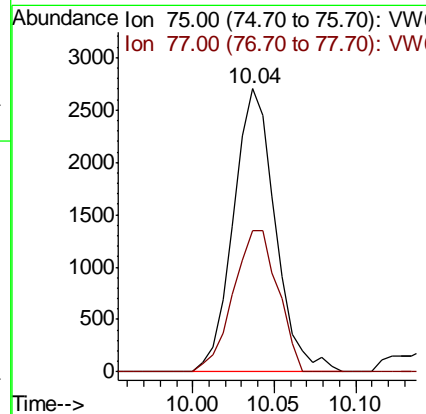
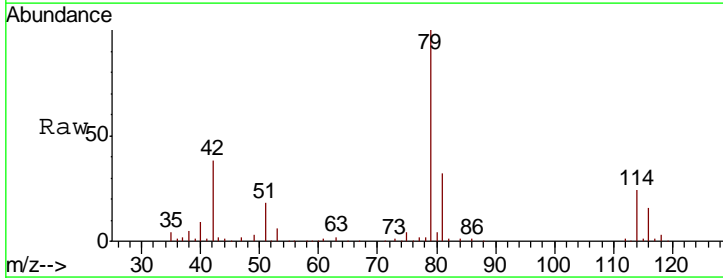
Instrument :  
 MSVOA\_W  
 ClientSampled :

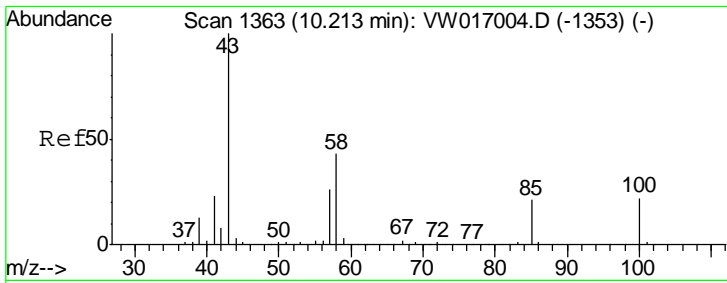
Tgt Ion	Resp	Lower	Upper
63	18365		
63	100		
112	0.4	4.5	6.7#



#42  
 cis-1,3-Dichloropropene  
 Concen: 0.519 ug/L  
 RT: 10.04 min Scan# 1334  
 Delta R.T. -0.04 min  
 Lab File: VW017010.D  
 Acq: 28 Oct 2020 13:46

Tgt Ion	Resp	Lower	Upper
75	4845		
75	100		
77	49.9	22.7	42.1#

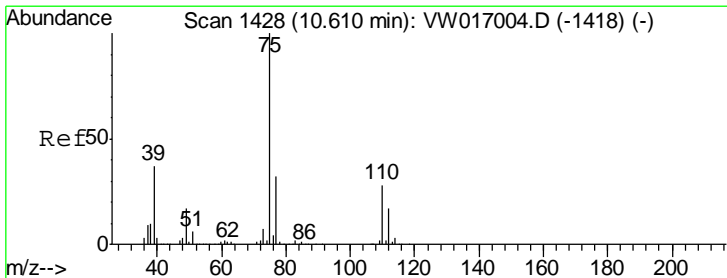
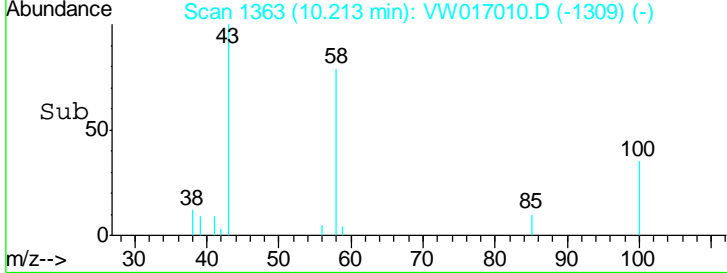
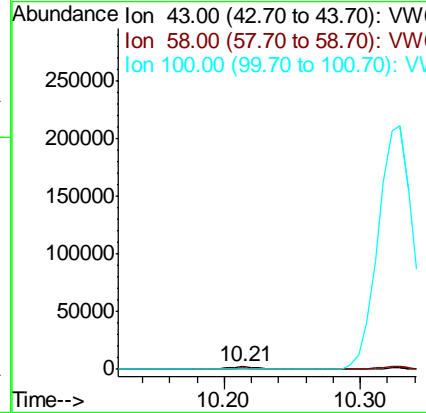
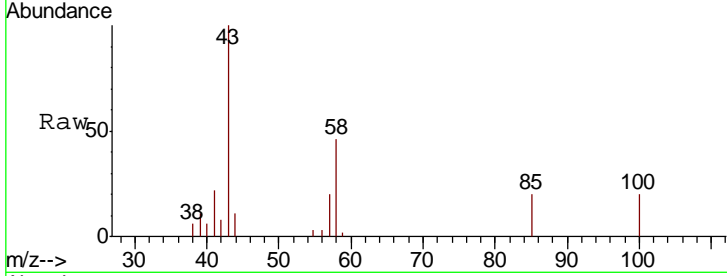




#43  
 4-Methyl-2-pentanone  
 Concen: 1.615 ug/L  
 RT: 10.21 min Scan# 1363  
 Delta R.T. 0.00 min  
 Lab File: VW017010.D  
 Acq: 28 Oct 2020 13:46

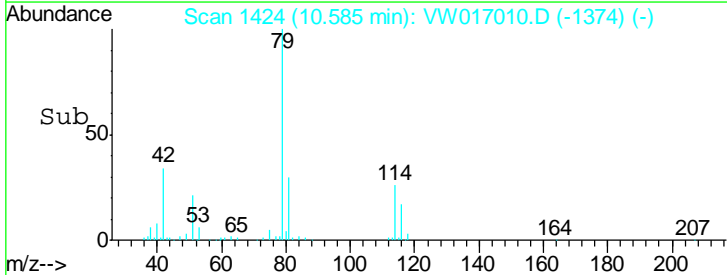
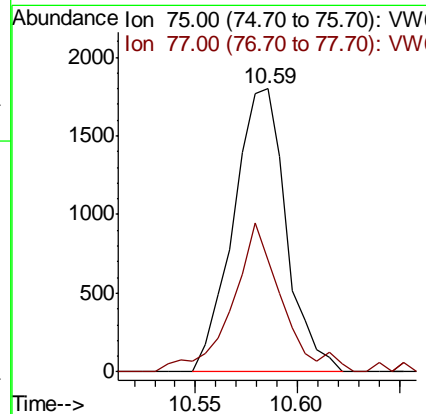
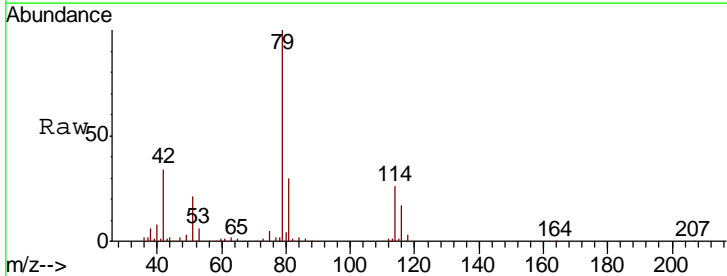
Instrument :  
 MSVOA\_W  
 ClientSampled :

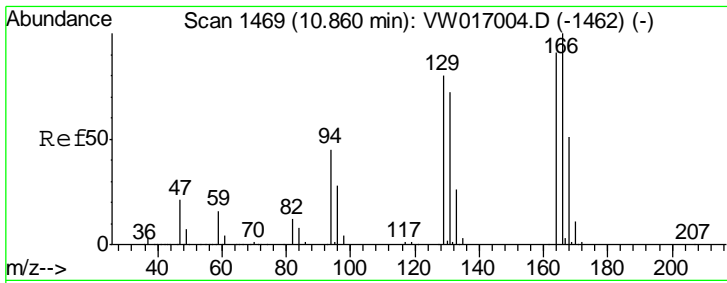
Tgt Ion	Resp	Lower	Upper
43	100		
58	40.9	34.4	51.6
100	18.3	16.2	24.2



#45  
 trans-1,3-Dichloropropene  
 Concen: 0.419 ug/L  
 RT: 10.59 min Scan# 1424  
 Delta R.T. -0.02 min  
 Lab File: VW017010.D  
 Acq: 28 Oct 2020 13:46

Tgt Ion	Resp	Lower	Upper
75	100		
77	39.4	22.7	42.3

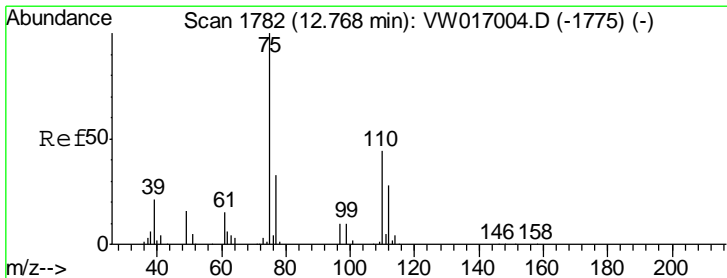
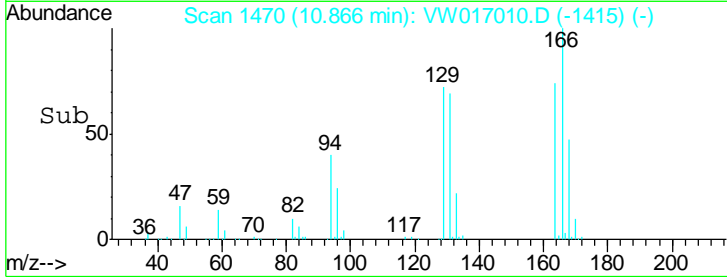
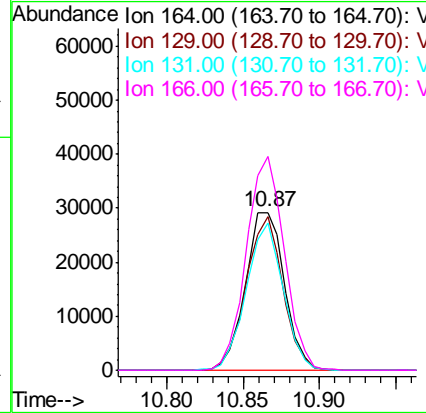
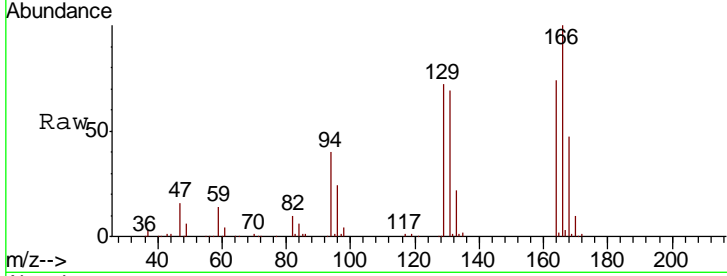




#47  
 Tetrachloroethene  
 Concen: 7.616 ug/L  
 RT: 10.87 min Scan# 1470  
 Delta R.T. 0.01 min  
 Lab File: VW017010.D  
 Acq: 28 Oct 2020 13:46

Instrument : MSVOA\_W  
 ClientSampled :

Tgt Ion	Resp	Lower	Upper
164	100		
129	97.4	64.0	119.0
131	92.9	61.7	114.5
166	135.2	94.6	175.8



#59  
 1,2,3-Trichloropropane  
 Concen: 6.401 ug/L  
 RT: 13.56 min Scan# 1912  
 Delta R.T. 0.79 min  
 Lab File: VW017010.D  
 Acq: 28 Oct 2020 13:46

Tgt Ion	Resp	Lower	Upper
75	100		
77	36.4	25.8	38.8

