

Data Path : Z:\VOASRV\HPCHEM1\MSVOA W\DATA\VW110920\  
 Data File : VW017117.D  
 Acq On : 09 Nov 2020 15:55  
 Operator : SY/VA  
 Sample : VIBLK  
 Misc : 5.00G/10ML/MSVOA W/SOIL  
 ALS Vial : 7 Sample Multiplier: 1

Instrument :  
 MSVOA\_W  
 ClientSampleId :  
 VIBLK10

Quant Time: Nov 10 07:59:44 2020  
 Quant Method : Z:\VOASRV\HPCHEM1\MSVOA\_W\METHOD\SOM2WLM110420S.M  
 Quant Title : VOC Analysis  
 QLast Update : Tue Nov 10 07:51:56 2020  
 Response via : Initial Calibration

Internal Standards	R.T.	QIon	Response	Conc	Units	Dev(Min)
1) 1,4-Difluorobenzene	8.85	114	473373	25.00	ug/L	0.00
28) Chlorobenzene-d5	11.63	117	440265	25.00	ug/L	0.00
60) 1,4-Dichlorobenzene-d4	13.56	152	202215	25.00	ug/L	0.00

System Monitoring Compounds

4) Vinyl Chloride-d3	2.36	65	152793	25.63	ug/L	0.00
Spiked Amount	25.000	Range	30 - 150	Recovery	=	102.52%
7) Chloroethane-d5	2.89	69	122853	26.74	ug/L	0.00
Spiked Amount	25.000	Range	30 - 150	Recovery	=	106.96%
10) 1,1-Dichloroethene-d2	4.02	63	199968	18.75	ug/L	0.00
Spiked Amount	25.000	Range	45 - 110	Recovery	=	75.00%
20) 2-Butanone-d5	7.09	46	55762	41.82	ug/L	0.00
Spiked Amount	50.000	Range	20 - 135	Recovery	=	83.64%
24) Chloroform-d	7.65	84	278170	25.17	ug/L	0.00
Spiked Amount	25.000	Range	40 - 150	Recovery	=	100.68%
26) 1,2-Dichloroethane-d4	8.31	65	135177	24.60	ug/L	0.00
Spiked Amount	25.000	Range	70 - 130	Recovery	=	98.40%
29) Benzene-d6	8.27	84	557244	24.85	ug/L	0.00
Spiked Amount	25.000	Range	20 - 135	Recovery	=	99.40%
33) 1,2-Dichloropropane-d6	9.27	67	154178	24.86	ug/L	0.00
Spiked Amount	25.000	Range	70 - 120	Recovery	=	99.44%
37) Toluene-d8	10.32	98	514942	24.36	ug/L	0.00
Spiked Amount	25.000	Range	30 - 130	Recovery	=	97.44%
38) trans-1,3-Dichloropropene-	10.58	79	62252	22.27	ug/L	0.00
Spiked Amount	25.000	Range	30 - 135	Recovery	=	89.08%
39) 2-Hexanone-d5	10.93	63	44252	40.89	ug/L	0.00
Spiked Amount	50.000	Range	20 - 135	Recovery	=	81.78%
48) 1,1,2,2-Tetrachloroethane-	12.69	84	121738	22.54	ug/L	0.00
Spiked Amount	25.000	Range	45 - 120	Recovery	=	90.16%
61) 1,2-Dichlorobenzene-d4	13.85	152	188910	26.52	ug/L	0.00
Spiked Amount	25.000	Range	75 - 120	Recovery	=	106.08%

Target Compounds

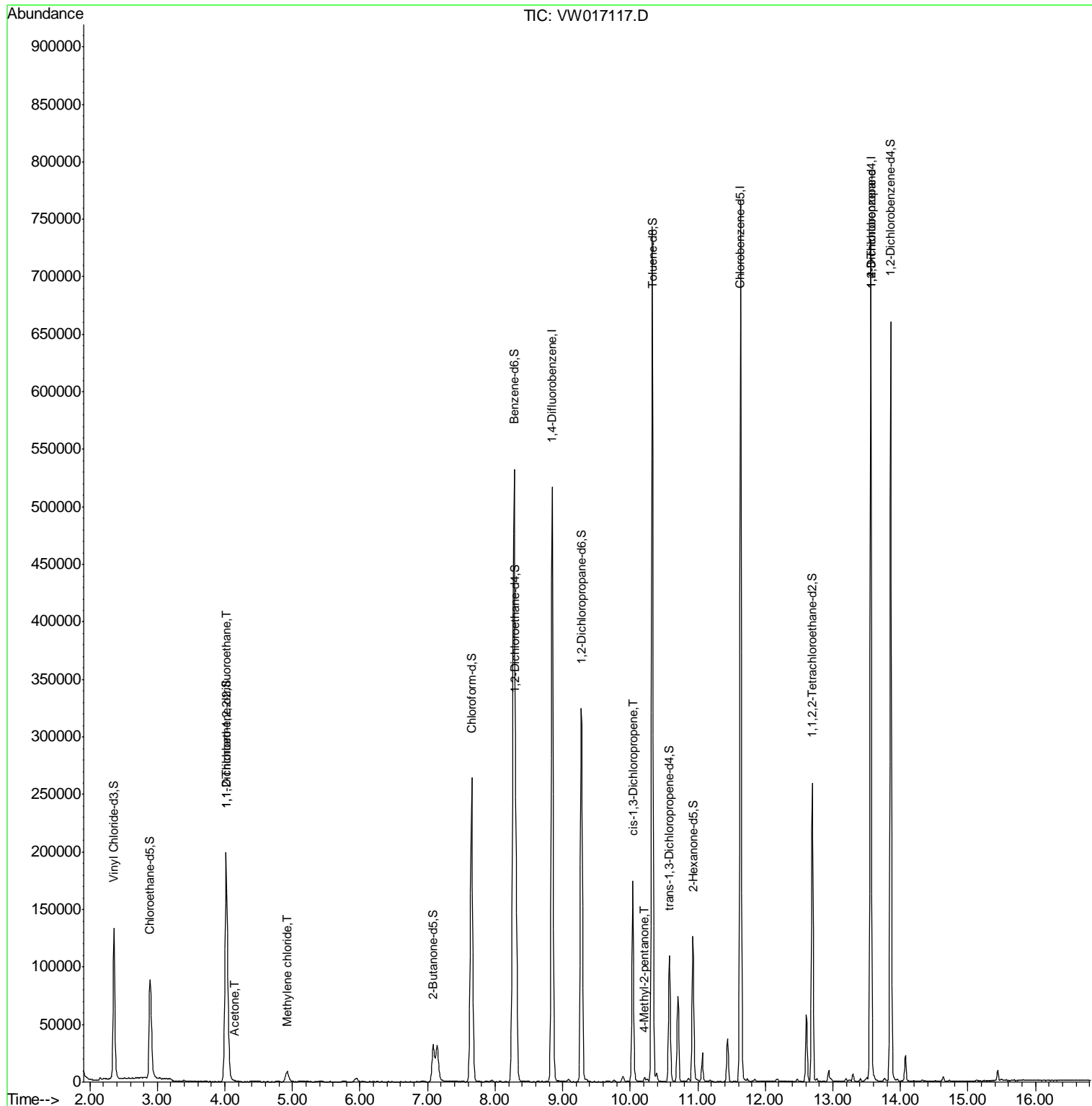
					Ovalue	
11) 1,1,2-Trichloro-1,2,2-trif	4.02	101	2324	0.380	ug/L	# 21
13) Acetone	4.14	43	432	0.484	ug/L	92
16) Methylene chloride	4.92	84	7744	1.213	ug/L	92
42) cis-1,3-Dichloropropene	10.04	75	4840	0.565	ug/L	# 69
43) 4-Methyl-2-pentanone	10.22	43	2480	0.744	ug/L	99
59) 1,2,3-Trichloropropane	13.56	75	21390	5.529	ug/L	93

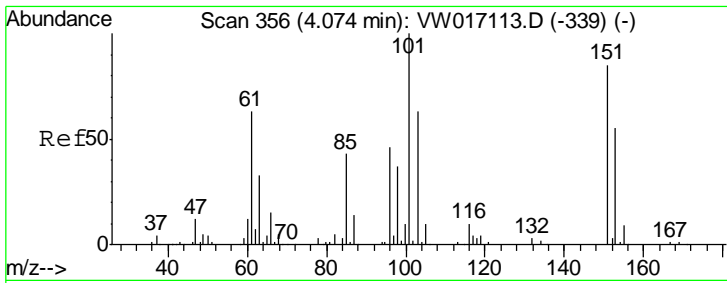
(#) = qualifier out of range (m) = manual integration (+) = signals summed

Data Path : Z:\VOASRV\HPCHEM1\MSVOA W\DATA\VW110920\  
 Data File : VW017117.D  
 Acq On : 09 Nov 2020 15:55  
 Operator : SY/VA  
 Sample : VIBLK  
 Misc : 5.00G/10ML/MSVOA W/SOIL  
 ALS Vial : 7 Sample Multiplier: 1

Instrument :  
 MSVOA\_W  
 Client Sampled :  
 VIBLK10

Quant Time: Nov 10 07:59:44 2020  
 Quant Method : Z:\VOASRV\HPCHEM1\MSVOA\_W\METHOD\SOM2WLM110420S.M  
 Quant Title : VOC Analysis  
 QLast Update : Tue Nov 10 07:51:56 2020  
 Response via : Initial Calibration





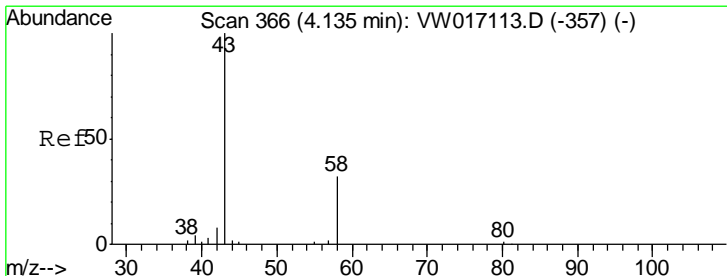
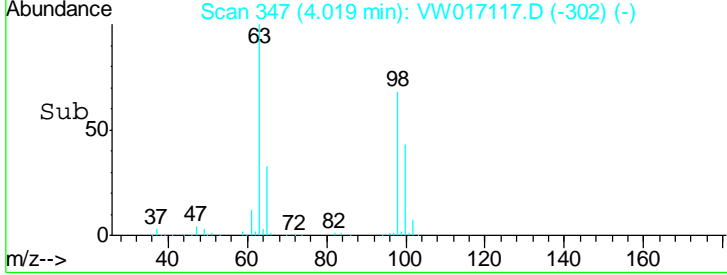
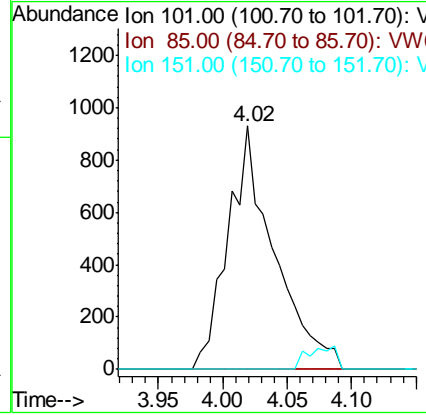
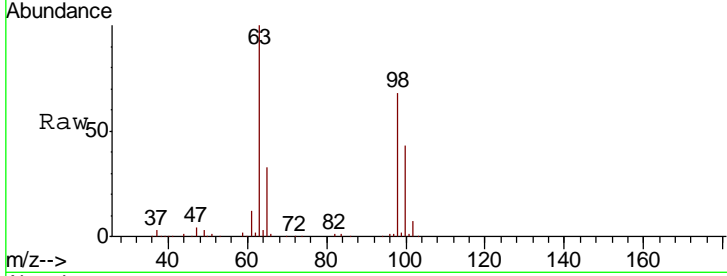
#11

1,1,2-Trichloro-1,2,2-trifluoroethane

Concen: 0.380 ug/L  
 RT: 4.02 min Scan# 347  
 Delta R.T. -0.05 min  
 Lab File: VW017117.D  
 Acq: 09 Nov 2020 15:55

Instrument : MSVOA\_W  
 ClientSampled : VIBLK10

Tgt Ion	Resp	Lower	Upper
101	2324		
85	0.0	32.8	49.2#
151	5.6	65.4	98.2#

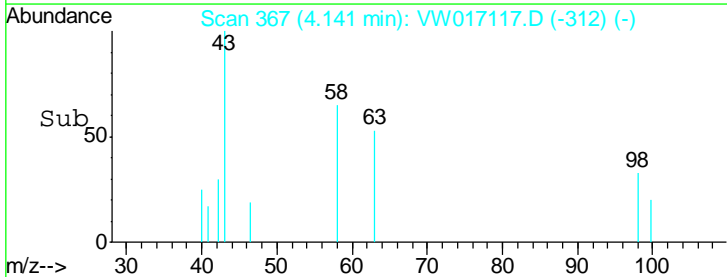
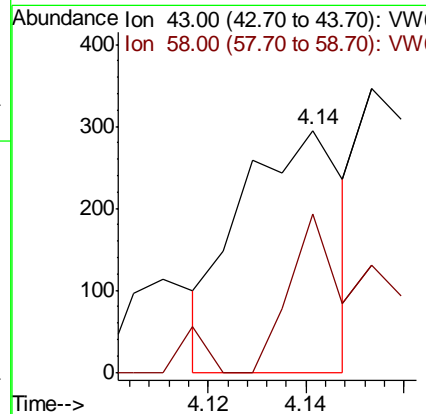
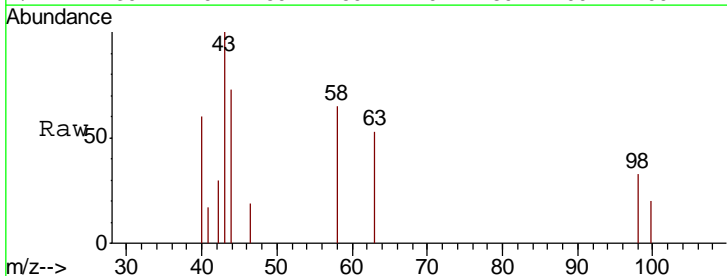


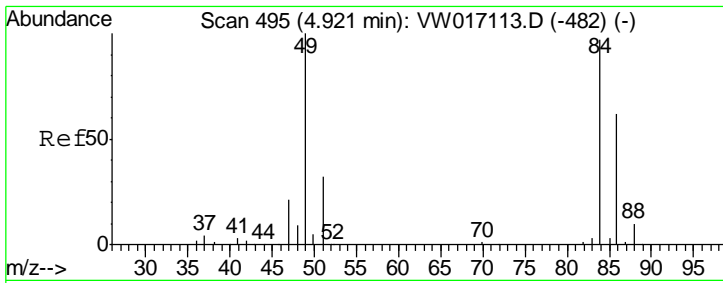
#13

Acetone

Concen: 0.484 ug/L  
 RT: 4.14 min Scan# 367  
 Delta R.T. 0.01 min  
 Lab File: VW017117.D  
 Acq: 09 Nov 2020 15:55

Tgt Ion	Resp	Lower	Upper
43	432		
58	30.1	0.0	69.2

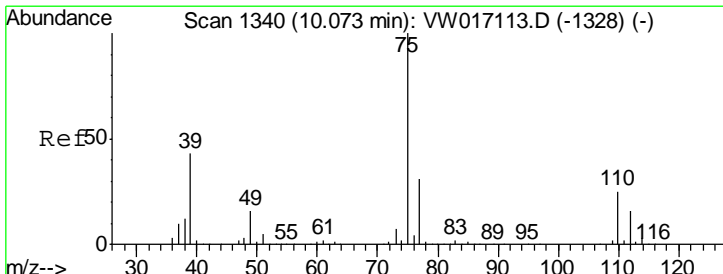
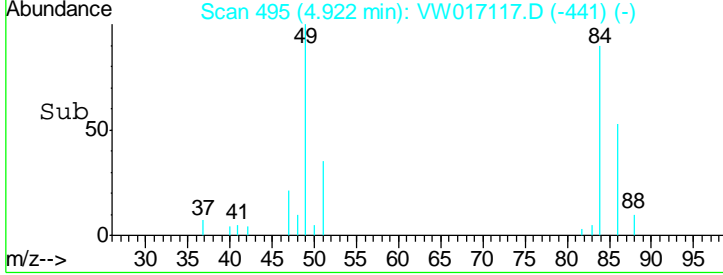
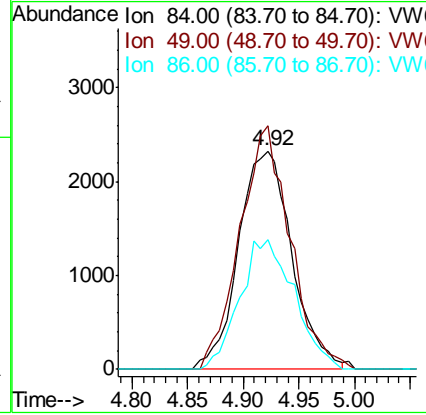
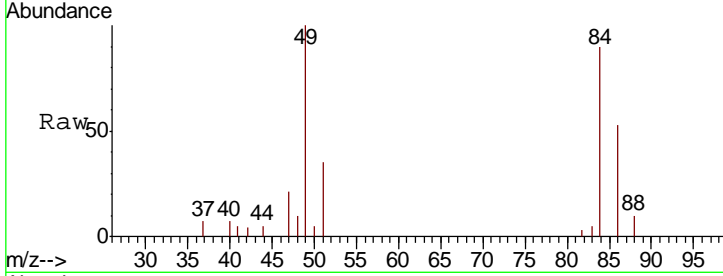




#16  
 Methylene chloride  
 Concen: 1.213 ug/L  
 RT: 4.92 min Scan# 495  
 Delta R.T. 0.00 min  
 Lab File: VW017117.D  
 Acq: 09 Nov 2020 15:55

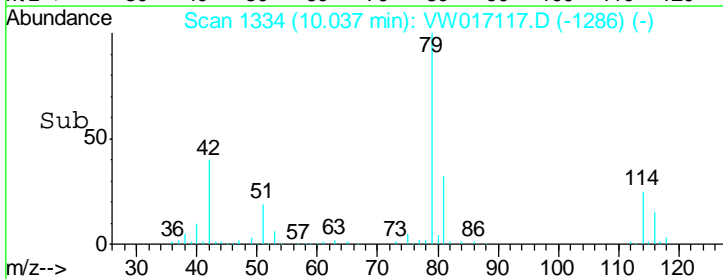
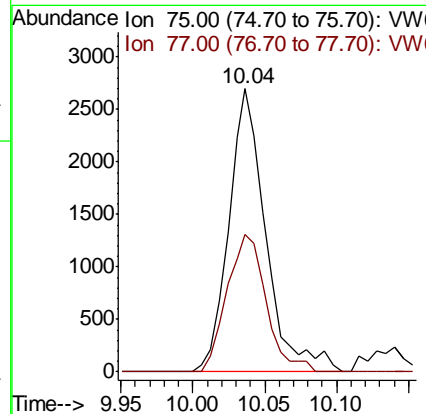
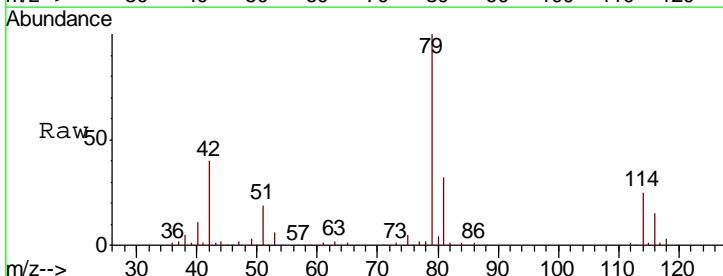
Instrument :  
 MSVOA\_W  
 ClientSampled :  
 VIBLK10

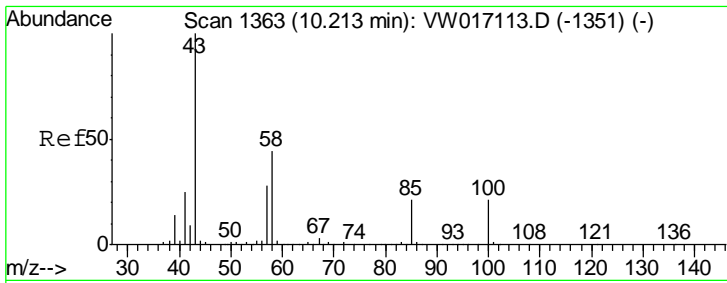
Tgt Ion	Resp	Lower	Upper
84	7744		
84	100		
49	111.5	72.3	134.3
86	59.1	45.1	83.7



#42  
 cis-1,3-Dichloropropene  
 Concen: 0.565 ug/L  
 RT: 10.04 min Scan# 1334  
 Delta R.T. -0.04 min  
 Lab File: VW017117.D  
 Acq: 09 Nov 2020 15:55

Tgt Ion	Resp	Lower	Upper
75	4840		
75	100		
77	48.7	22.0	41.0#

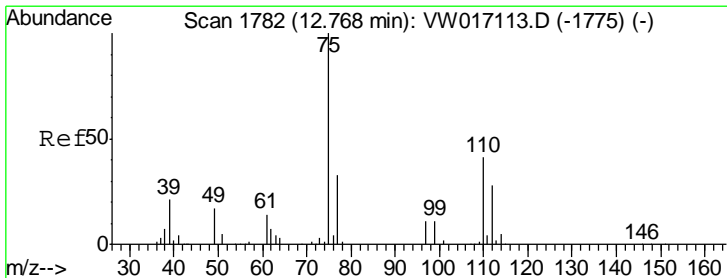
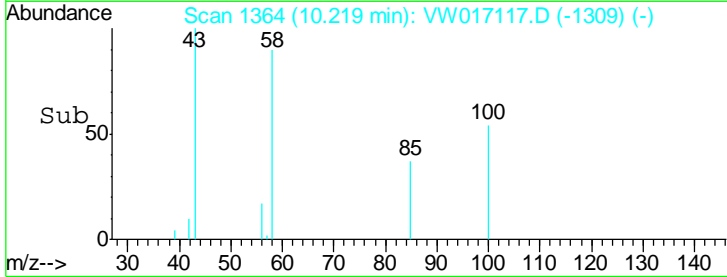
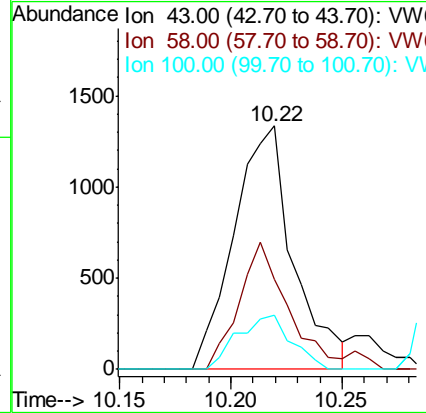
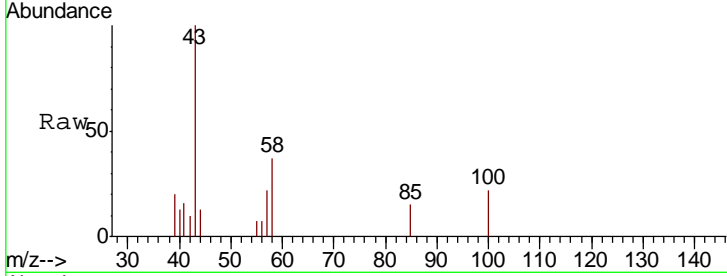




#43  
 4-Methyl-2-pentanone  
 Concen: 0.744 ug/L  
 RT: 10.22 min Scan# 1364  
 Delta R.T. 0.01 min  
 Lab File: VW017117.D  
 Acq: 09 Nov 2020 15:55

Instrument :  
 MSVOA\_W  
 ClientSampled :  
 VIBLK10

Tgt Ion	Resp	Lower	Upper
43	100		
58	43.0	35.0	52.6
100	20.3	16.6	24.8



#59  
 1,2,3-Trichloropropane  
 Concen: 5.529 ug/L  
 RT: 13.56 min Scan# 1912  
 Delta R.T. 0.79 min  
 Lab File: VW017117.D  
 Acq: 09 Nov 2020 15:55

Tgt Ion	Resp	Lower	Upper
75	100		
77	36.9	26.4	39.6

