

Data Path : Z:\VOASRV\HPCHEM1\MSVOA W\DATA\VW111120\
 Data File : VW017171.D
 Acq On : 11 Nov 2020 18:08
 Operator : SY/VA
 Sample : L4693-22
 Misc : 5.45G/10ML/MSVOA W/SOIL
 ALS Vial : 21 Sample Multiplier: 1

Instrument :
 MSVOA_W
 ClientSampleId :
 BG4E8

Quant Time: Nov 12 03:17:27 2020
 Quant Method : Z:\VOASRV\HPCHEM1\MSVOA_W\METHOD\SOM2WLM110420S.M
 Quant Title : VOC Analysis
 QLast Update : Thu Nov 12 03:07:51 2020
 Response via : Initial Calibration

Internal Standards	R.T.	QIon	Response	Conc	Units	Dev(Min)
1) 1,4-Difluorobenzene	8.85	114	464675	25.00	ug/L	0.00
28) Chlorobenzene-d5	11.63	117	419888	25.00	ug/L	0.00
60) 1,4-Dichlorobenzene-d4	13.56	152	197171	25.00	ug/L	0.00

System Monitoring Compounds

4) Vinyl Chloride-d3	2.36	65	128238	21.91	ug/L	0.00
Spiked Amount	25.000	Range	30 - 150	Recovery	=	87.64%
7) Chloroethane-d5	2.90	69	108301	24.01	ug/L	0.00
Spiked Amount	25.000	Range	30 - 150	Recovery	=	96.04%
10) 1,1-Dichloroethene-d2	4.03	63	177640	16.97	ug/L	0.00
Spiked Amount	25.000	Range	45 - 110	Recovery	=	67.88%
20) 2-Butanone-d5	7.09	46	41958	32.06	ug/L	0.01
Spiked Amount	50.000	Range	20 - 135	Recovery	=	64.12%
24) Chloroform-d	7.65	84	255203	23.53	ug/L	0.00
Spiked Amount	25.000	Range	40 - 150	Recovery	=	94.12%
26) 1,2-Dichloroethane-d4	8.40	65	129	0.02	ug/L	0.09
Spiked Amount	25.000	Range	70 - 130	Recovery	=	0.08%#
29) Benzene-d6	8.28	84	516360	24.15	ug/L	0.00
Spiked Amount	25.000	Range	20 - 135	Recovery	=	96.60%
33) 1,2-Dichloropropane-d6	9.28	67	141122	23.86	ug/L	0.00
Spiked Amount	25.000	Range	70 - 120	Recovery	=	95.44%
37) Toluene-d8	10.33	98	490046	24.31	ug/L	0.00
Spiked Amount	25.000	Range	30 - 130	Recovery	=	97.24%
38) trans-1,3-Dichloropropene-	10.58	79	53032	19.89	ug/L	0.00
Spiked Amount	25.000	Range	30 - 135	Recovery	=	79.56%
39) 2-Hexanone-d5	10.93	63	34582	33.51	ug/L	0.00
Spiked Amount	50.000	Range	20 - 135	Recovery	=	67.02%
48) 1,1,2,2-Tetrachloroethane-	12.69	84	98551	19.13	ug/L	0.00
Spiked Amount	25.000	Range	45 - 120	Recovery	=	76.52%
61) 1,2-Dichlorobenzene-d4	13.85	152	167575	24.12	ug/L	0.00
Spiked Amount	25.000	Range	75 - 120	Recovery	=	96.48%

Target Compounds

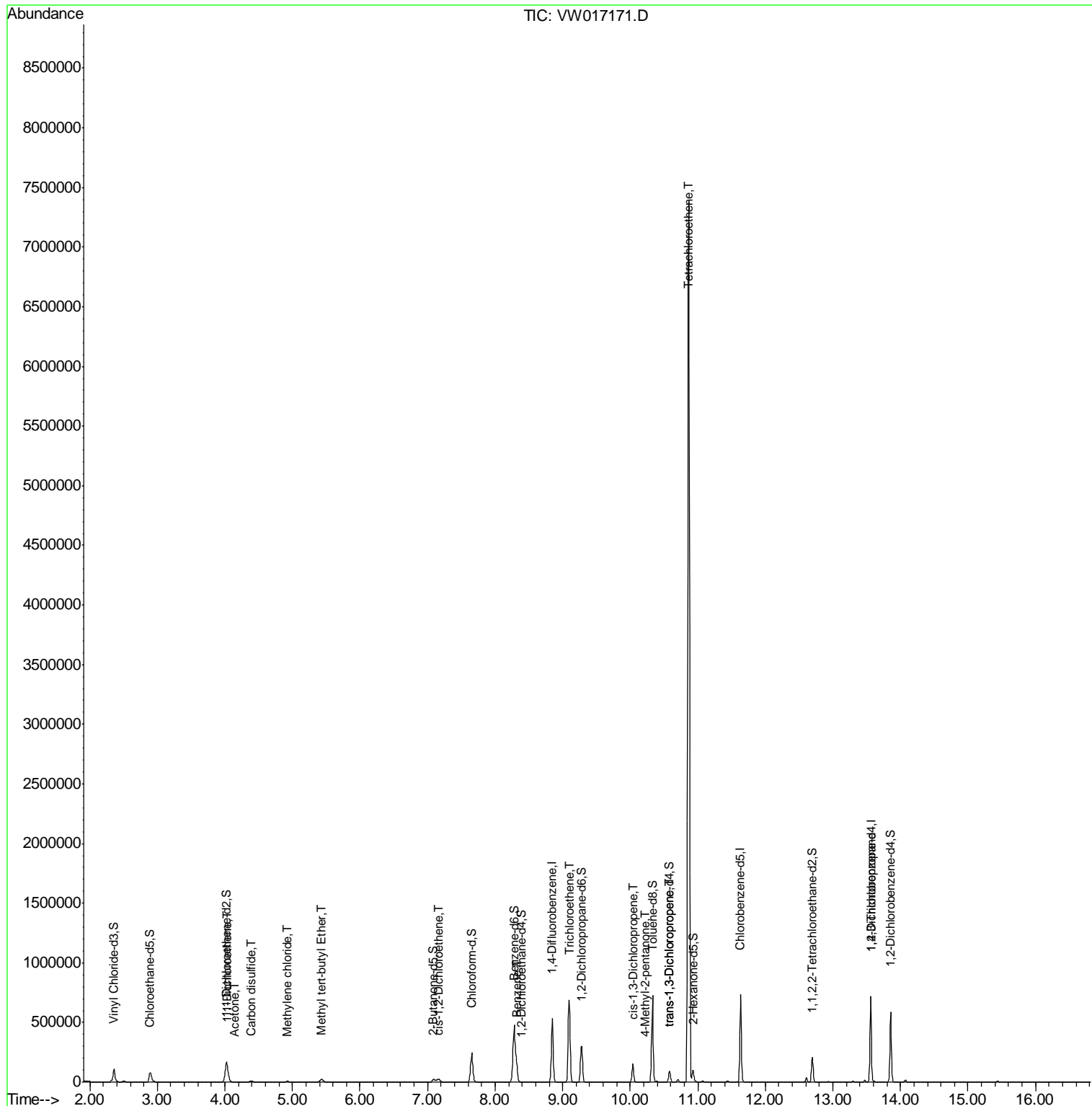
Target Compounds	R.T.	QIon	Response	Conc	Units	Ovalue
12) 1,1-Dichloroethene	4.04	96	2300	0.399	ug/L #	1
13) Acetone	4.15	43	4265	4.867	ug/L	96
14) Carbon disulfide	4.39	76	24299	1.548	ug/L	96
16) Methylene chloride	4.93	84	5179	0.827	ug/L	87
17) Methyl tert-butyl Ether	5.43	73	35869	5.093	ug/L	98
22) cis-1,2-Dichloroethene	7.17	96	8566	1.357	ug/L	95
34) Benzene	8.32	78	27805	1.261	ug/L	100
35) Trichloroethene	9.10	95	240344	38.914	ug/L	100
42) cis-1,3-Dichloropropene	10.04	75	4123	0.505	ug/L #	82
43) 4-Methyl-2-pentanone	10.21	43	2379	0.748	ug/L	96
45) trans-1,3-Dichloropropene	10.58	75	2372	0.338	ug/L #	77
47) Tetrachloroethene	10.87	164	1742452	312.693	ug/L	94
59) 1,2,3-Trichloropropane	13.56	75	21277	5.766	ug/L	95

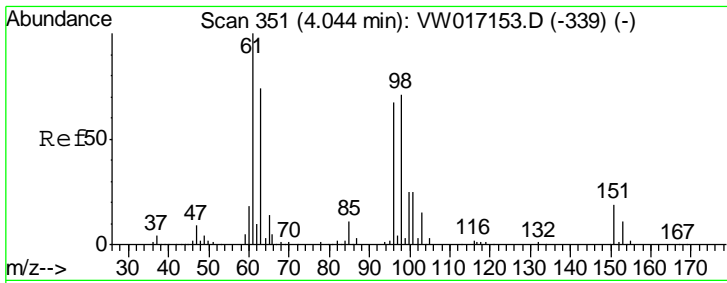
(#) = qualifier out of range (m) = manual integration (+) = signals summed

Data Path : Z:\VOASRV\HPCHEM1\MSVOA W\DATA\VW111120\
 Data File : VW017171.D
 Acq On : 11 Nov 2020 18:08
 Operator : SY/VA
 Sample : L4693-22
 Misc : 5.45G/10ML/MSVOA W/SOIL
 ALS Vial : 21 Sample Multiplier: 1

Instrument :
 MSVOA_W
 ClientSampleId :
 BG4E8

Quant Time: Nov 12 03:17:27 2020
 Quant Method : Z:\VOASRV\HPCHEM1\MSVOA_W\METHOD\SOM2WLM110420S.M
 Quant Title : VOC Analysis
 QLast Update : Thu Nov 12 03:07:51 2020
 Response via : Initial Calibration

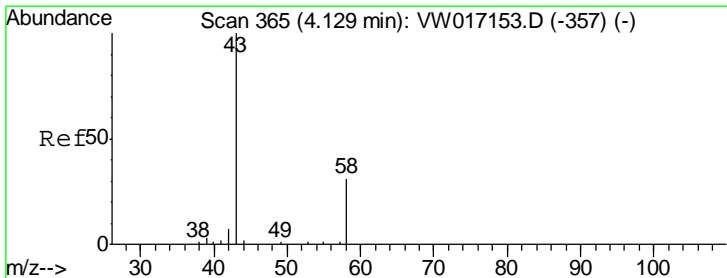
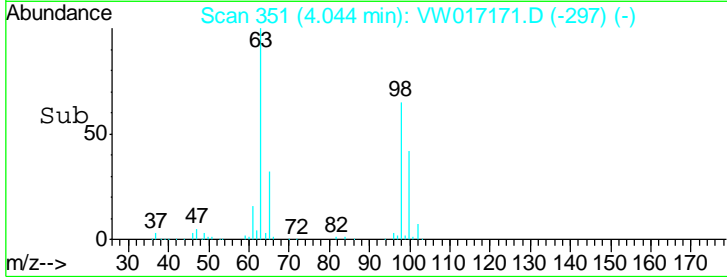
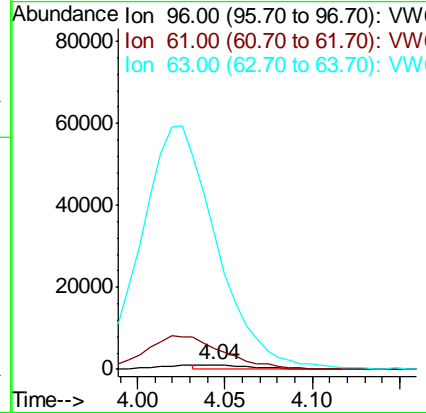
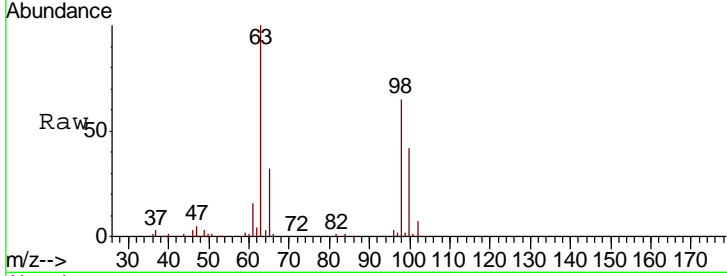




#12
 1,1-Dichloroethene
 Concen: 0.399 ug/L
 RT: 4.04 min Scan# 351
 Delta R.T. 0.00 min
 Lab File: VW017171.D
 Acq: 11 Nov 2020 18:08

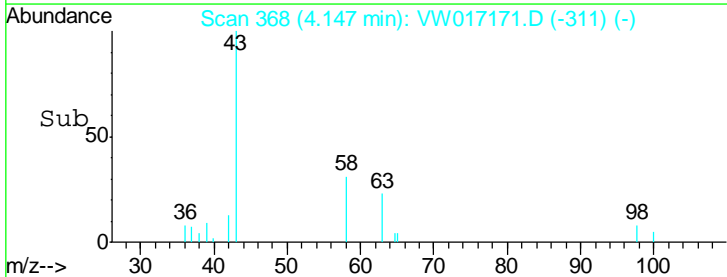
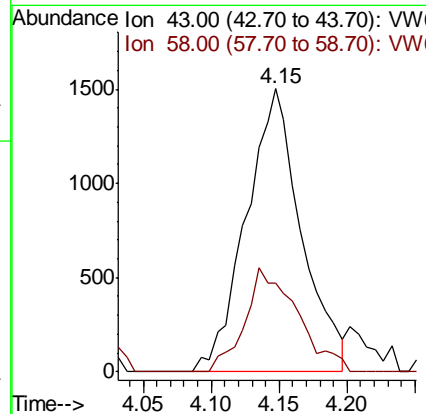
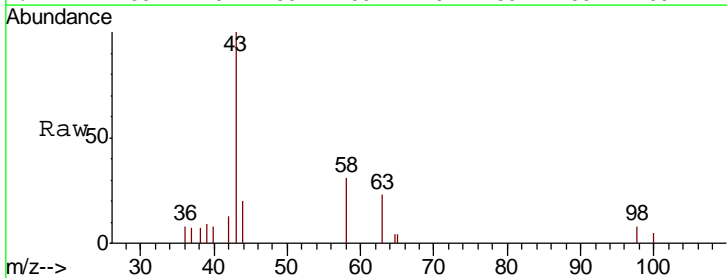
Instrument :
 MSVOA_W
 ClientSampled :
 BG4E8

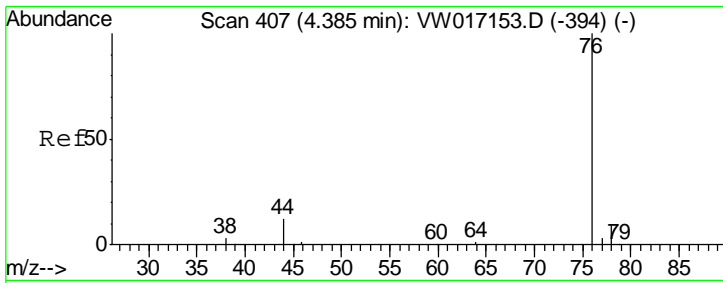
Tgt Ion: 96 Resp: 2300
 Ion Ratio Lower Upper
 96 100
 61 456.8 103.8 192.8#
 63 2903.3 84.4 156.7#



#13
 Acetone
 Concen: 4.867 ug/L
 RT: 4.15 min Scan# 368
 Delta R.T. 0.02 min
 Lab File: VW017171.D
 Acq: 11 Nov 2020 18:08

Tgt Ion: 43 Resp: 4265
 Ion Ratio Lower Upper
 43 100
 58 32.4 0.0 69.2

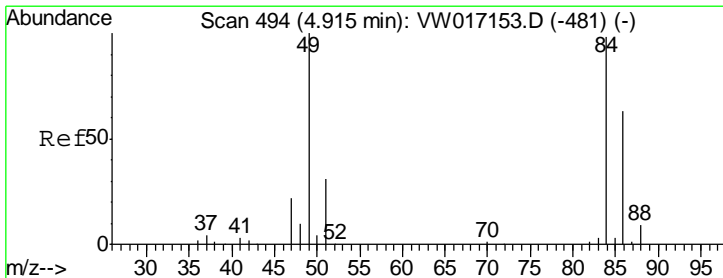
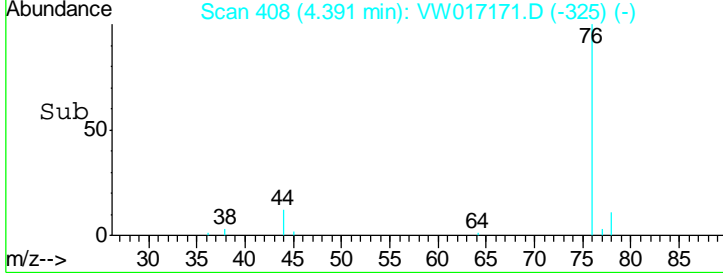
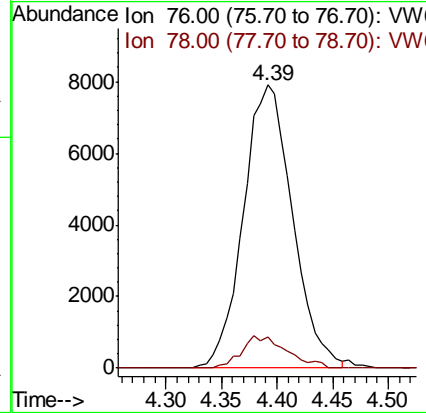
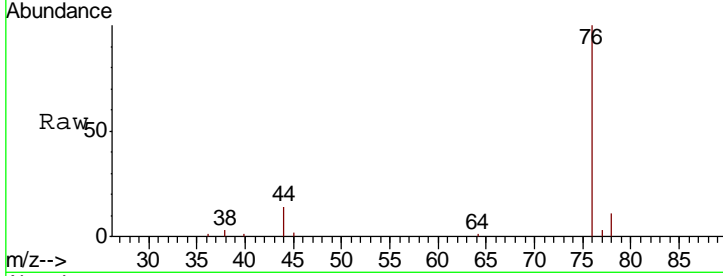




#14
 Carbon disulfide
 Concen: 1.548 ug/L
 RT: 4.39 min Scan# 408
 Delta R.T. 0.01 min
 Lab File: VW017171.D
 Acq: 11 Nov 2020 18:08

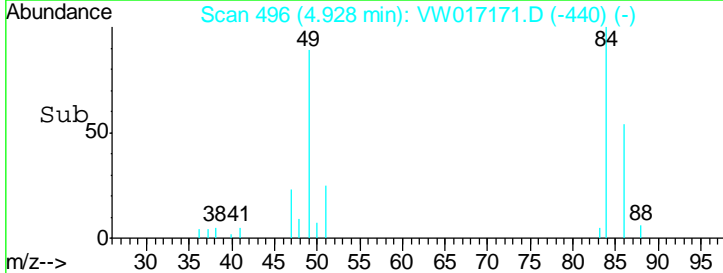
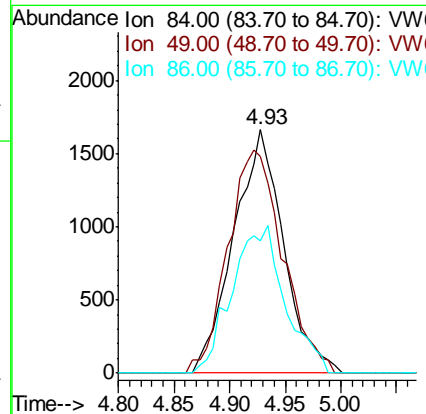
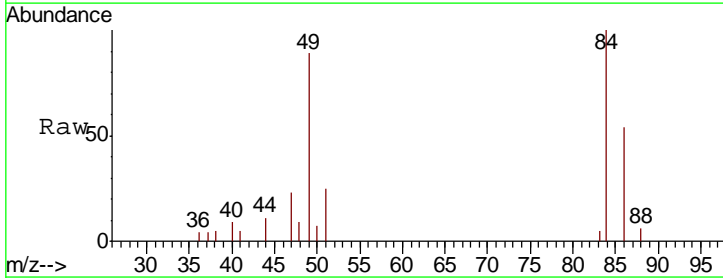
Instrument :
 MSVOA_W
 ClientSampled :
 BG4E8

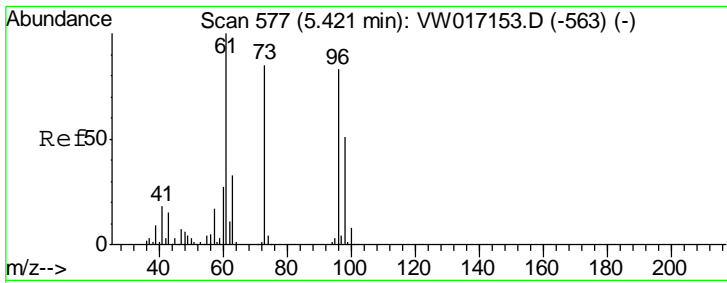
Tgt Ion	Resp	Lower	Upper
76	24299		
78	10.9	7.6	11.4



#16
 Methylene chloride
 Concen: 0.827 ug/L
 RT: 4.93 min Scan# 496
 Delta R.T. 0.01 min
 Lab File: VW017171.D
 Acq: 11 Nov 2020 18:08

Tgt Ion	Resp	Lower	Upper
84	5179		
49	89.1	72.3	134.3
86	54.4	45.1	83.7

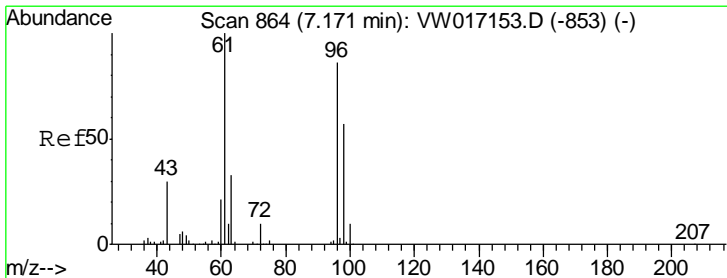
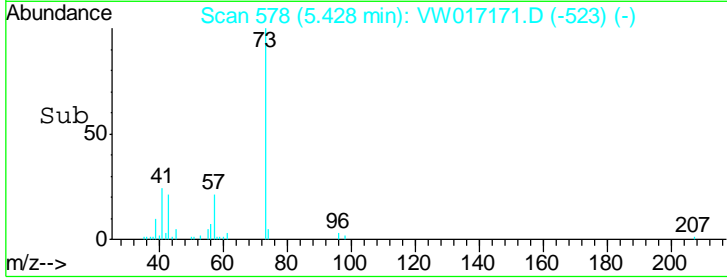
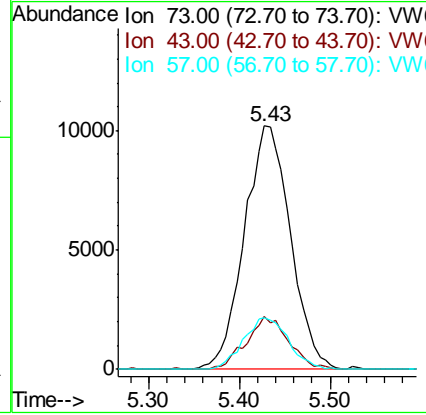
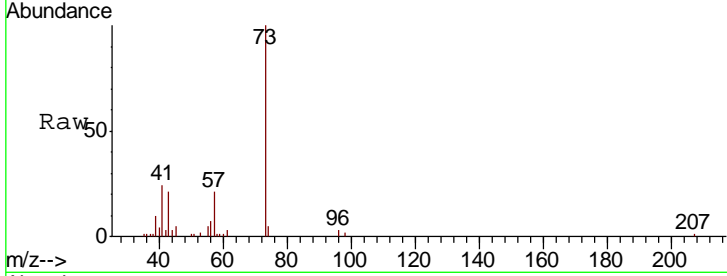




#17
 Methyl tert-butyl Ether
 Concen: 5.093 ug/L
 RT: 5.43 min Scan# 578
 Delta R.T. 0.01 min
 Lab File: VW017171.D
 Acq: 11 Nov 2020 18:08

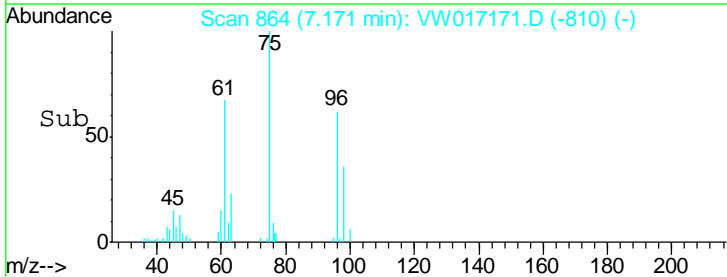
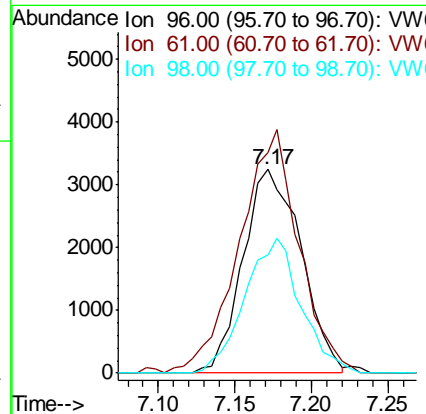
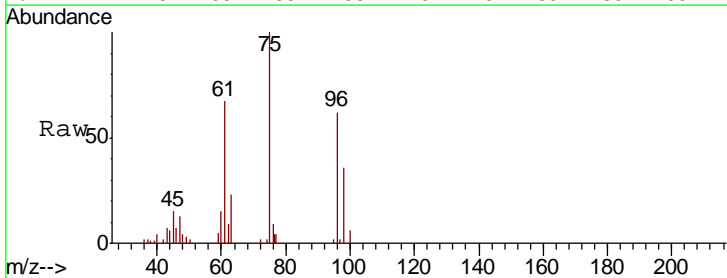
Instrument :
 MSVOA_W
 ClientSampled :
 BG4E8

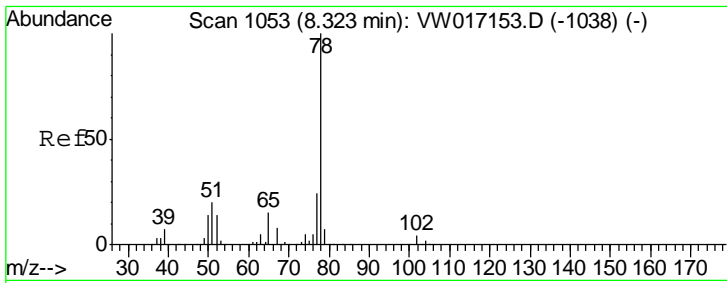
Tgt Ion	Resp	Lower	Upper
73	35869		
43	19.5	14.5	21.7
57	20.6	16.3	24.5



#22
 cis-1,2-Dichloroethene
 Concen: 1.357 ug/L
 RT: 7.17 min Scan# 864
 Delta R.T. 0.00 min
 Lab File: VW017171.D
 Acq: 11 Nov 2020 18:08

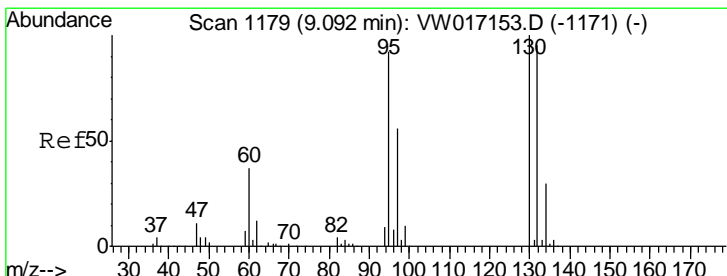
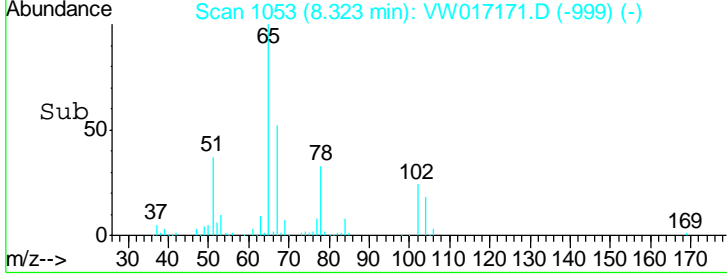
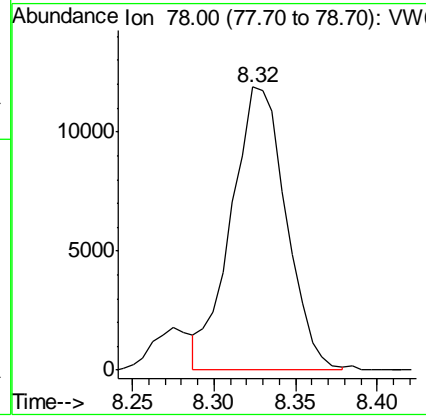
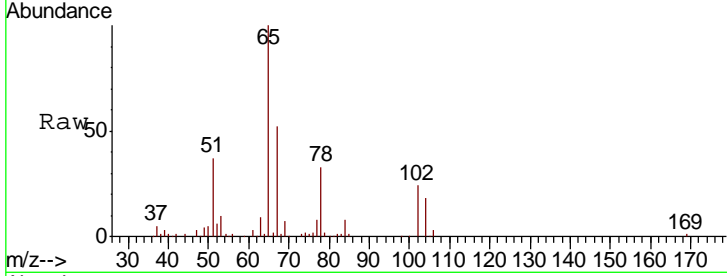
Tgt Ion	Resp	Lower	Upper
96	8566		
61	107.9	77.4	143.8
98	57.8	45.1	83.7





#34
Benzene
Concen: 1.261 ug/L
RT: 8.32 min Scan# 1053
Delta R.T. 0.00 min
Lab File: VW017171.D
Acq: 11 Nov 2020 18:08
Tgt Ion: 78 Resp: 27805

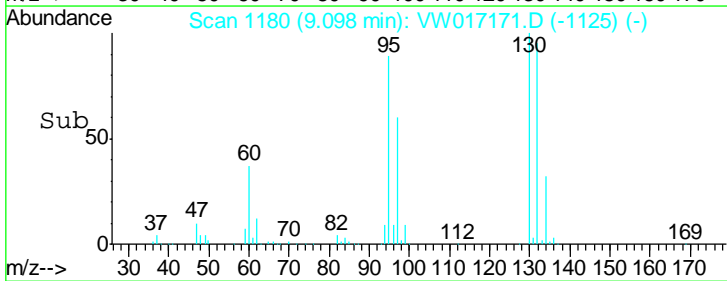
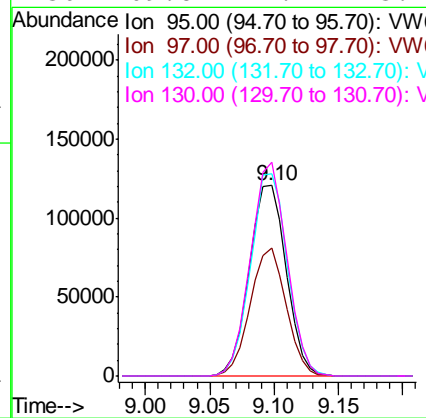
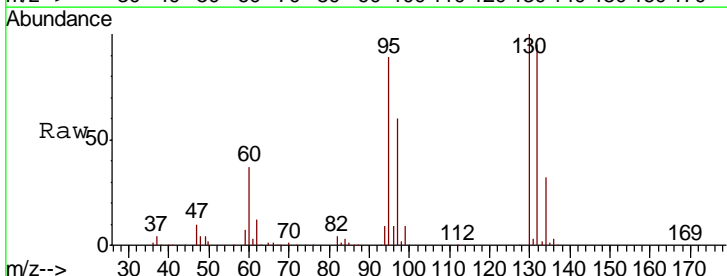
Instrument : MSVOA_W
ClientSampled : BG4E8

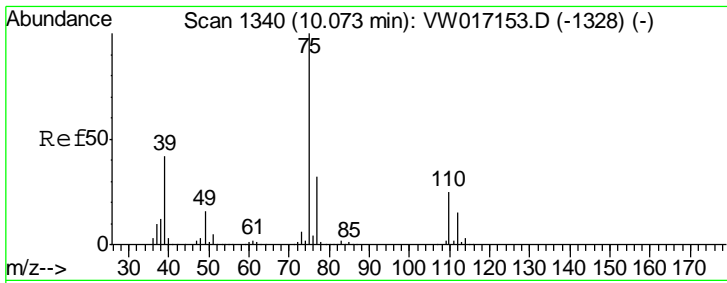


#35
Trichloroethene
Concen: 38.914 ug/L
RT: 9.10 min Scan# 1180
Delta R.T. 0.01 min
Lab File: VW017171.D
Acq: 11 Nov 2020 18:08

Tgt Ion: 95 Resp: 240344

Ion	Ratio	Lower	Upper
95	100		
97	65.0	45.0	83.6
132	105.2	73.7	136.9
130	109.8	77.1	143.1

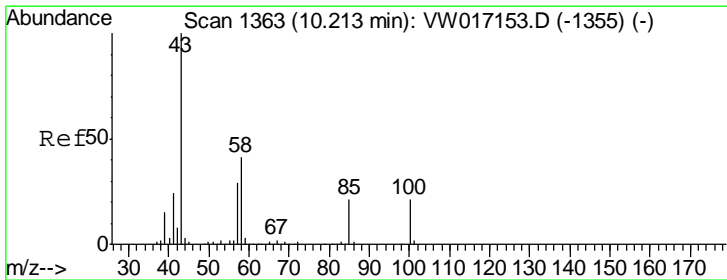
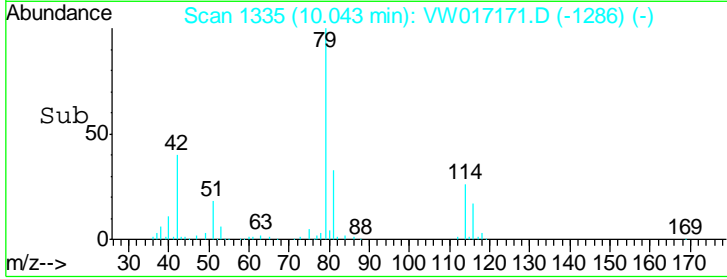
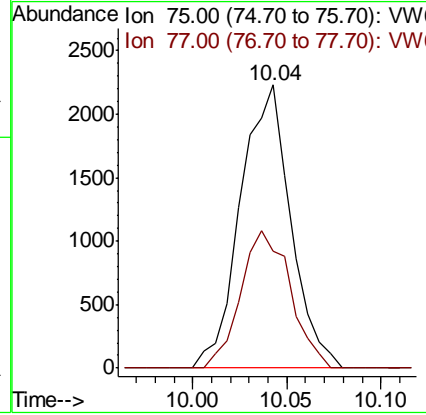
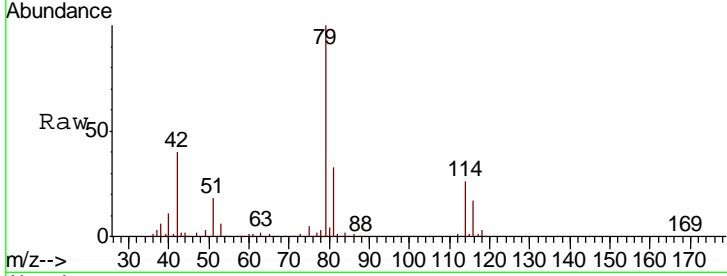




#42
 cis-1,3-Dichloropropene
 Concen: 0.505 ug/L
 RT: 10.04 min Scan# 1335
 Delta R.T. -0.03 min
 Lab File: VW017171.D
 Acq: 11 Nov 2020 18:08

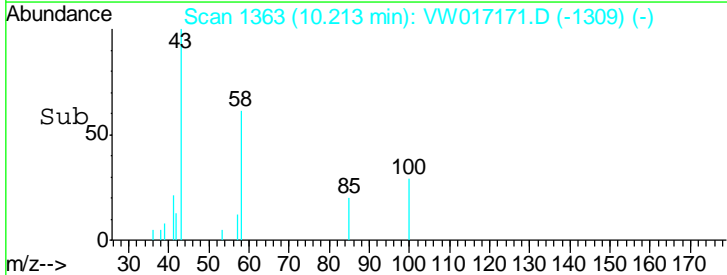
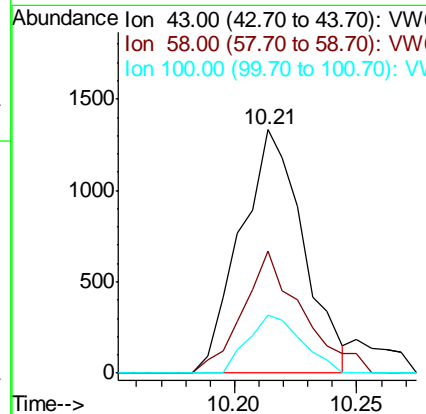
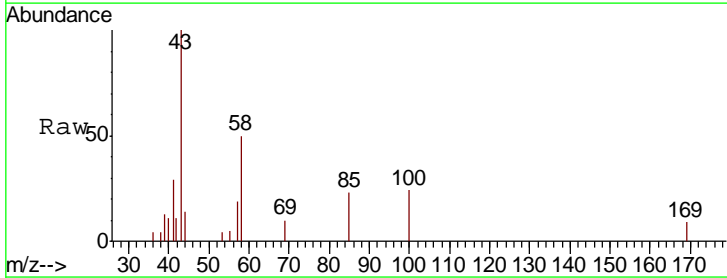
Instrument :
 MSVOA_W
 ClientSampled :
 BG4E8

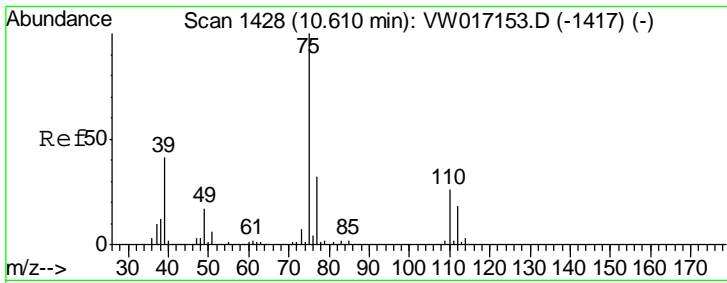
Tgt Ion: 75 Resp: 4123
 Ion Ratio Lower Upper
 75 100
 77 41.3 22.0 41.0#



#43
 4-Methyl-2-pentanone
 Concen: 0.748 ug/L
 RT: 10.21 min Scan# 1363
 Delta R.T. 0.00 min
 Lab File: VW017171.D
 Acq: 11 Nov 2020 18:08

Tgt Ion: 43 Resp: 2379
 Ion Ratio Lower Upper
 43 100
 58 47.3 35.0 52.6
 100 20.5 16.6 24.8

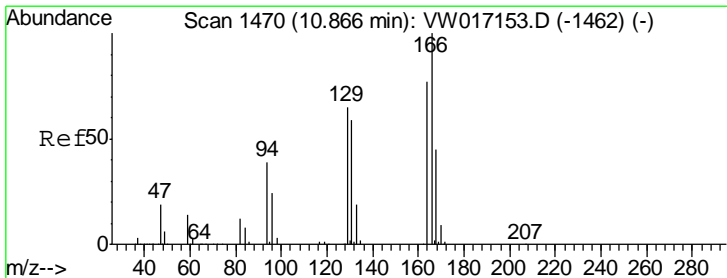
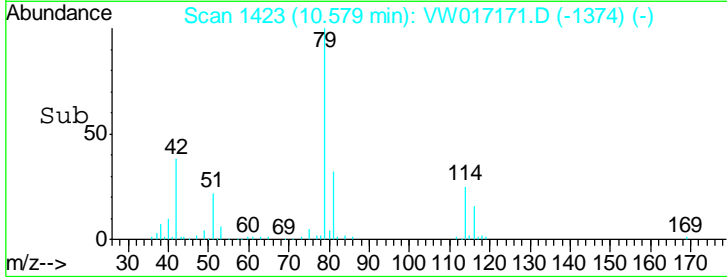
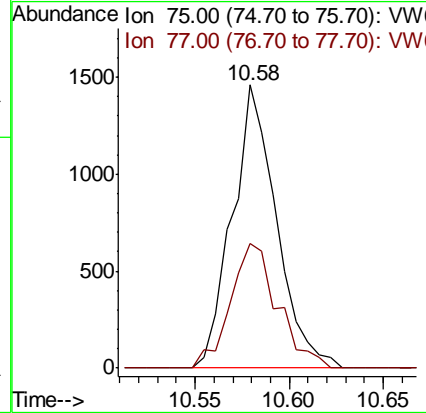
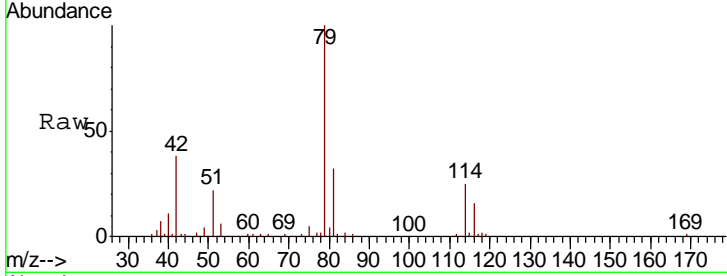




#45
 trans-1,3-Dichloropropene
 Concen: 0.338 ug/L
 RT: 10.58 min Scan# 1423
 Delta R.T. -0.03 min
 Lab File: VW017171.D
 Acq: 11 Nov 2020 18:08

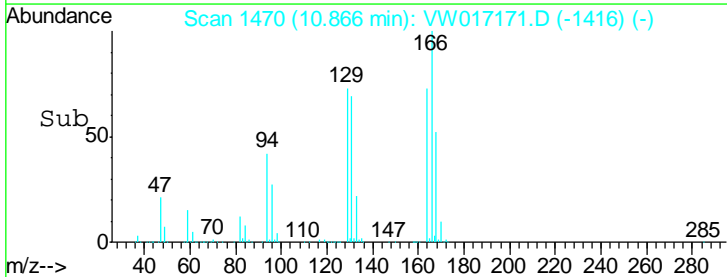
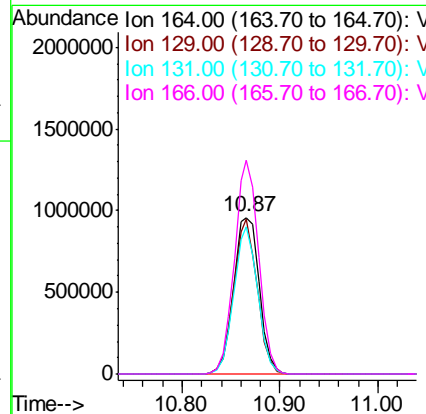
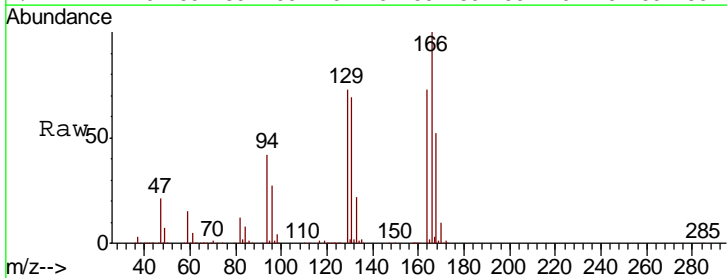
Instrument :
 MSVOA_W
 ClientSampled :
 BG4E8

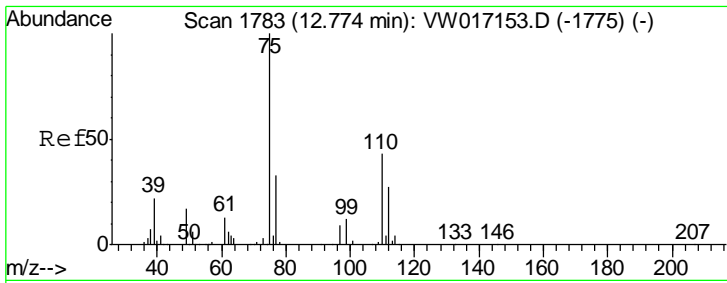
Tgt Ion: 75 Resp: 2372
 Ion Ratio Lower Upper
 75 100
 77 44.2 22.1 41.1#



#47
 Tetrachloroethene
 Concen: 312.693 ug/L
 RT: 10.87 min Scan# 1470
 Delta R.T. 0.00 min
 Lab File: VW017171.D
 Acq: 11 Nov 2020 18:08

Tgt Ion: 164 Resp: 1742452
 Ion Ratio Lower Upper
 164 100
 129 99.1 62.9 116.7
 131 94.2 63.3 117.5
 166 136.5 92.0 170.8





#59
 1,2,3-Trichloropropane
 Concen: 5.766 ug/L
 RT: 13.56 min Scan# 1912
 Delta R.T. 0.79 min
 Lab File: VW017171.D
 Acq: 11 Nov 2020 18:08

Instrument :
 MSVOA_W
 ClientSampled :
 BG4E8

Tot Ion: 75 Resp: 21277
 Ion Ratio Lower Upper
 75 100
 77 36.1 26.4 39.6

