

Data Path : Z:\VOASRV\HPCHEM1\MSVOA W\DATA\VW111220\
 Data File : VW017193.D
 Acq On : 12 Nov 2020 18:29
 Operator : SY/VA
 Sample : VIBLK06
 Misc : 5.00G/10ML/MSVOA W/SOIL
 ALS Vial : 20 Sample Multiplier: 1

Instrument :
 MSVOA_W
 ClientSampleId :
 VIBLK06

Quant Time: Nov 13 06:18:44 2020
 Quant Method : Z:\VOASRV\HPCHEM1\MSVOA_W\METHOD\SOM2WLM110420S.M
 Quant Title : VOC Analysis
 QLast Update : Fri Nov 13 04:11:30 2020
 Response via : Initial Calibration

Internal Standards	R.T.	QIon	Response	Conc	Units	Dev(Min)
1) 1,4-Difluorobenzene	8.84	114	432268	25.00	ug/L	0.00
28) Chlorobenzene-d5	11.63	117	403128	25.00	ug/L	0.00
60) 1,4-Dichlorobenzene-d4	13.56	152	209191	25.00	ug/L	0.00

System Monitoring Compounds

4) Vinyl Chloride-d3	2.35	65	108873	20.00	ug/L	0.00
Spiked Amount	25.000	Range	30 - 150	Recovery	=	80.00%
7) Chloroethane-d5	2.89	69	89052	21.22	ug/L	0.00
Spiked Amount	25.000	Range	30 - 150	Recovery	=	84.88%
10) 1,1-Dichloroethene-d2	4.02	63	152574	15.67	ug/L	0.00
Spiked Amount	25.000	Range	45 - 110	Recovery	=	62.68%
20) 2-Butanone-d5	7.07	46	61578	50.57	ug/L	-0.01
Spiked Amount	50.000	Range	20 - 135	Recovery	=	101.14%
24) Chloroform-d	7.65	84	236685	23.45	ug/L	0.00
Spiked Amount	25.000	Range	40 - 150	Recovery	=	93.80%
26) 1,2-Dichloroethane-d4	8.31	65	128040	25.52	ug/L	0.00
Spiked Amount	25.000	Range	70 - 130	Recovery	=	102.08%
29) Benzene-d6	8.27	84	450528	21.95	ug/L	0.00
Spiked Amount	25.000	Range	20 - 135	Recovery	=	87.80%
33) 1,2-Dichloropropane-d6	9.27	67	125968	22.18	ug/L	0.00
Spiked Amount	25.000	Range	70 - 120	Recovery	=	88.72%
37) Toluene-d8	10.32	98	438291	22.64	ug/L	0.00
Spiked Amount	25.000	Range	30 - 130	Recovery	=	90.56%
38) trans-1,3-Dichloropropene-	10.58	79	56465	22.06	ug/L	0.00
Spiked Amount	25.000	Range	30 - 135	Recovery	=	88.24%
39) 2-Hexanone-d5	10.93	63	53591	54.08	ug/L	0.00
Spiked Amount	50.000	Range	20 - 135	Recovery	=	108.16%
48) 1,1,2,2-Tetrachloroethane-	12.69	84	121463	24.56	ug/L	0.00
Spiked Amount	25.000	Range	45 - 120	Recovery	=	98.24%
61) 1,2-Dichlorobenzene-d4	13.85	152	186619	25.32	ug/L	0.00
Spiked Amount	25.000	Range	75 - 120	Recovery	=	101.28%

Target Compounds

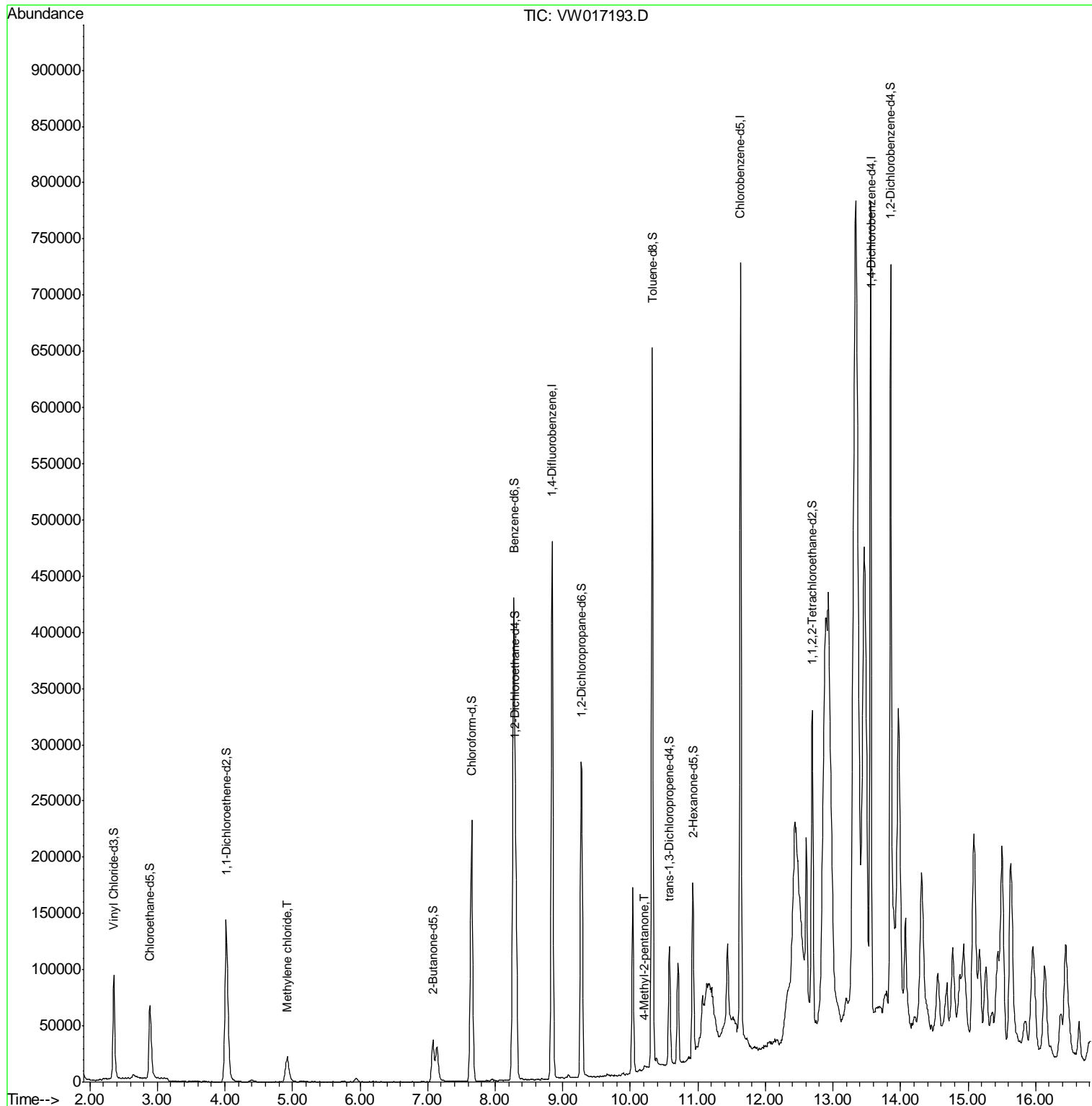
Target Compounds	R.T.	QIon	Response	Conc	Units	Ovalue
16) Methylene chloride	4.93	84	21657	3.716	ug/L	99
43) 4-Methyl-2-pentanone	10.21	43	3078	1.008	ug/L #	88

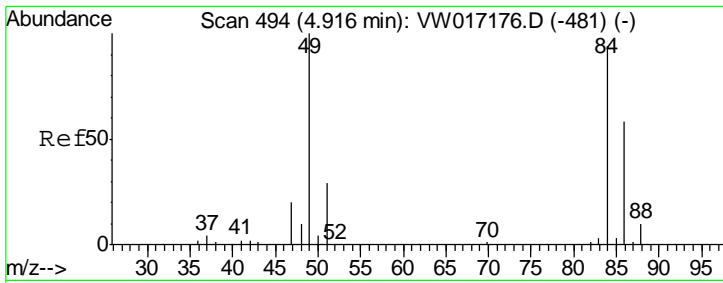
(#) = qualifier out of range (m) = manual integration (+) = signals summed

Data Path : Z:\VOASRV\HPCHEM1\MSVOA W\DATA\VW111220\
 Data File : VW017193.D
 Acq On : 12 Nov 2020 18:29
 Operator : SY/VA
 Sample : VIBLK06
 Misc : 5.00G/10ML/MSVOA W/SOIL
 ALS Vial : 20 Sample Multiplier: 1

Instrument :
 MSVOA_W
 ClientSampled :
 VIBLK06

Quant Time: Nov 13 06:18:44 2020
 Quant Method : Z:\VOASRV\HPCHEM1\MSVOA_W\METHOD\SOM2WLM110420S.M
 Quant Title : VOC Analysis
 QLast Update : Fri Nov 13 04:11:30 2020
 Response via : Initial Calibration

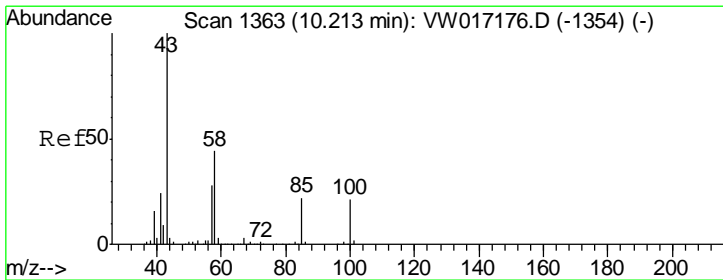
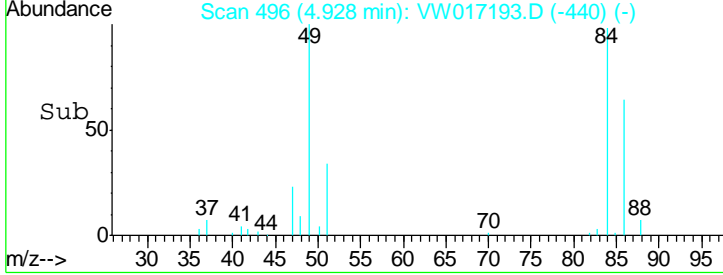
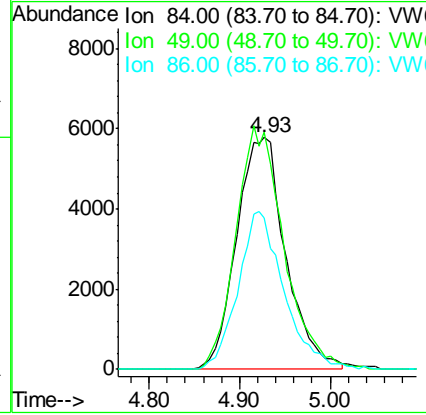
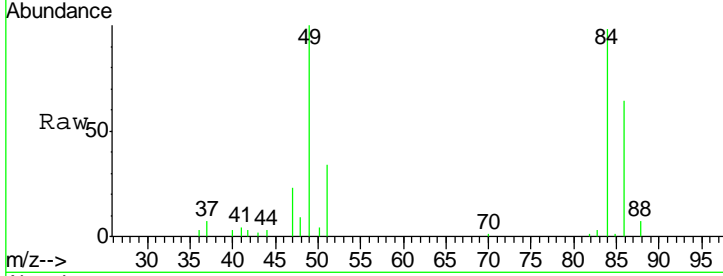




#16
 Methylene chloride
 Concen: 3.716 ug/L
 RT: 4.93 min Scan# 496
 Delta R.T. 0.01 min
 Lab File: VW017193.D
 Acq: 12 Nov 2020 18:29

Instrument :
 MSVOA_W
 ClientSampled :
 VIBLK06

Tgt Ion	Resp	Lower	Upper
84	100		
49	102.4	72.3	134.3
86	65.2	45.1	83.7



#43
 4-Methyl-2-pentanone
 Concen: 1.008 ug/L
 RT: 10.21 min Scan# 1363
 Delta R.T. -0.00 min
 Lab File: VW017193.D
 Acq: 12 Nov 2020 18:29

Tgt Ion	Resp	Lower	Upper
43	100		
58	35.6	35.0	52.6
100	16.1	16.6	24.8#

